

## Report Timeframe: April 30 to May 6, 2023

**Statewide community levels: Low.** For this seven-day reporting period, the rate of new COVID-19 cases per 100,000 Vermonters is below 200. New COVID-19 admissions are below 10 per 100,000 Vermonters per day, and the percentage of staffed hospital beds occupied by COVID-19 is below 10%.

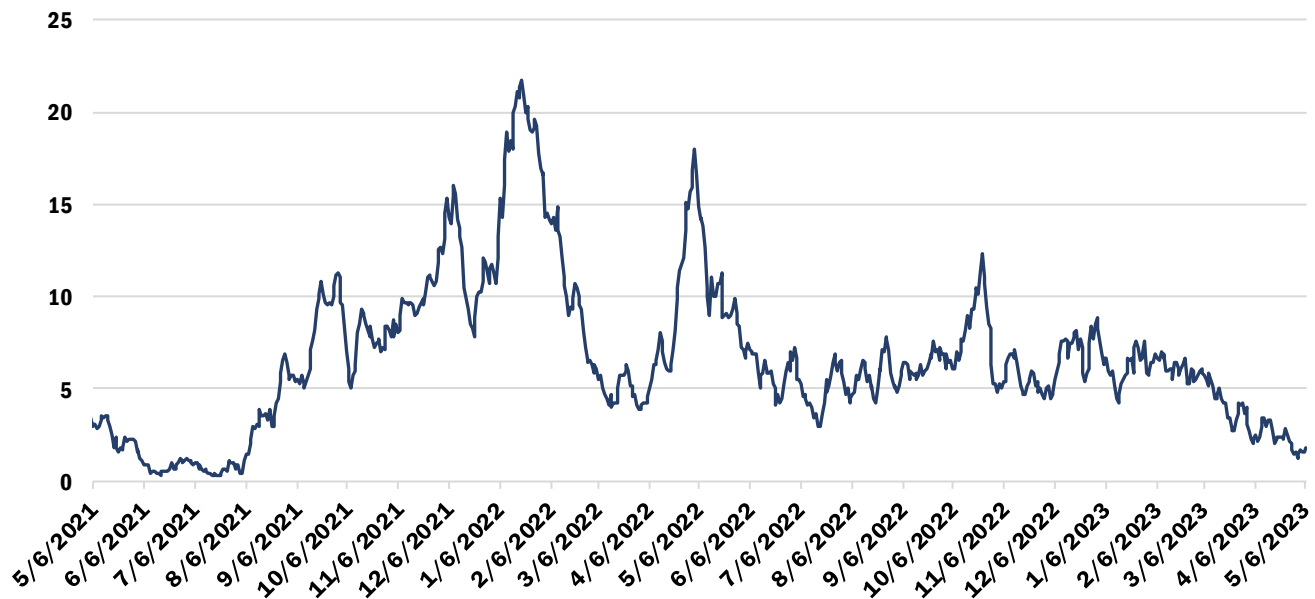
- New COVID-19 cases, last 7 days: 14.90 per 100k (slight decrease from last week)
  - Weekly case count: 93
- New hospital admissions of patients with COVID-19, last 7 days: 2.08 per 100K
  - 13 total new admissions with COVID-19 (similar to last week)
- Percent of staffed inpatient beds occupied by patients with COVID-19 (7-day average): 1.01% (decrease from last week)

Vermont Department of Health recommendations: [Preventing COVID-19 \(healthvermont.gov\)](https://healthvermont.gov/preventing-covid-19)

CDC recommendations: [COVID-19 by County | CDC](https://www.cdc.gov/covid19/by-county/)

## Hospitalizations Over Time

### Daily Hospitalizations With COVID-19 Diagnosis Seven-Day Rolling Average



Source: U.S. Department of Health and Human Services Unified Hospital Data

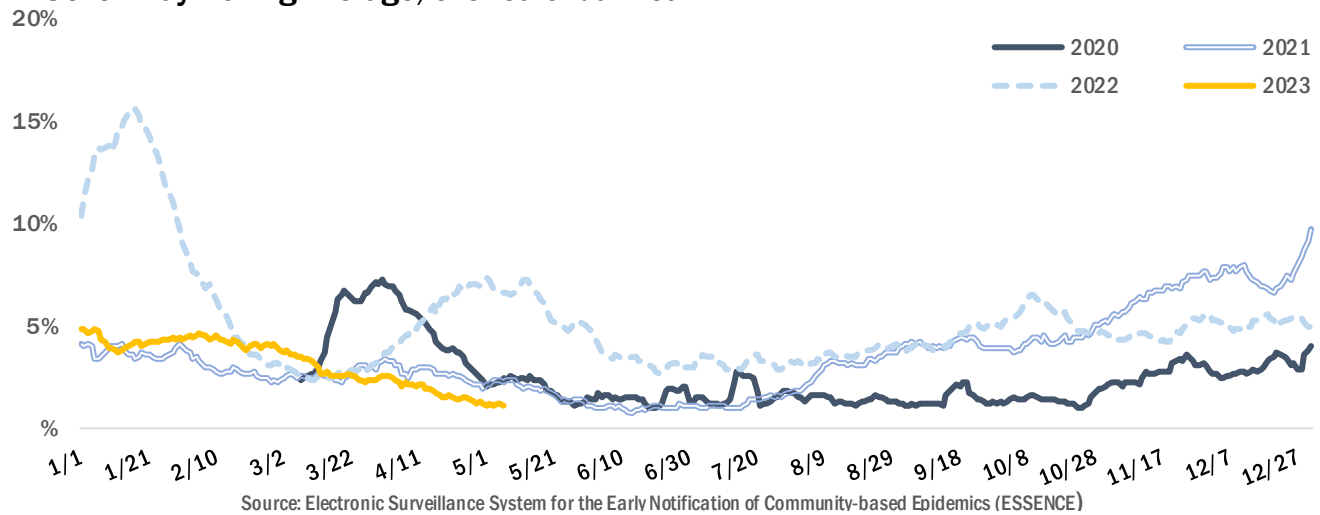
The seven-day rolling average of hospital patients admitted with a laboratory-confirmed COVID-19 was around three during the most recent seven-day period, the lowest sustained average since the summer of 2021. The number is the daily average of the previous seven days; for example, the value for May 28 is the daily average for the days of May 21 through May 27.

## Syndromic Surveillance

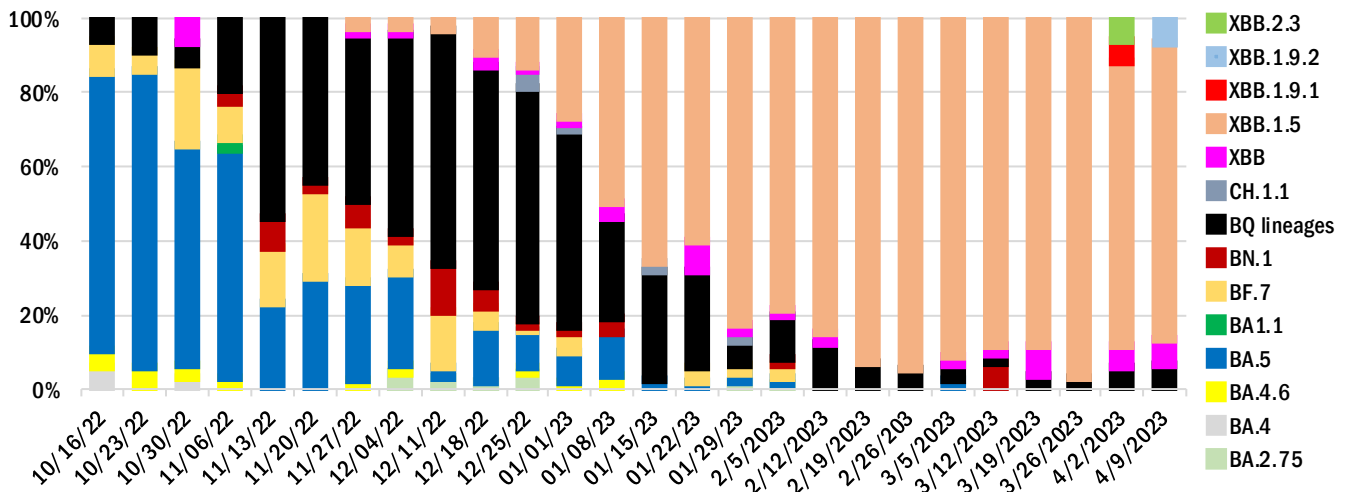
Vermont is using the Electronic Surveillance System for the Early Notification of Community-based Epidemics (ESSENCE), which provides all individual emergency department visits from participating emergency departments<sup>1</sup>, to identify Emergency Department visits for COVID-Like Illness (CLI).

During this reporting period the proportion of emergency visits in participating emergency departments that included CLI was under 2%, lower than the same dates in previous years.

### Percent of Emergency Visits with COVID-Like Illness Seven-Day Rolling Average, over Calendar Year



## Proportion of sequenced variants



XBB variants continue to comprise >90% of circulating virus. (Sources: Broad; Aegis; Helix; LabCorp; Quest; Health Department Whole Genome Sequencing program)

<sup>1</sup> All Vermont hospitals and two urgent care clinics are included in ESSENCE.

### Wastewater Monitoring



Vermont wastewater districts participating with the National Wastewater Surveillance System (NWSS).

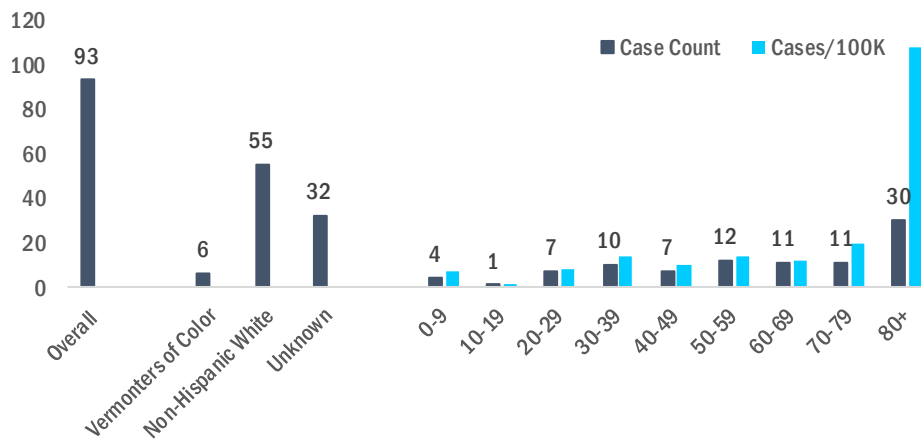
There are more increases than decreases this week.

NWSS Site	15-day % change
Bennington	Increase between 10%-99%
Brighton	Increase between 100%-999%
Essex Junction	*
Ludlow	Increase between 100%-999%
South Burlington	Increase between 100%-999%
St. Albans City	Decrease between 10%-99%
St. Johnsbury	Increase between 100%-999%
Troy / Jay WWTP	Increase between 100%-999%
Winooski	Increase between 100%-999%

The city of Burlington has suspended its wastewater testing as of April 3<sup>rd</sup>, 2023.

### Identified Cases

#### Vermont Weekly Case Counts/Rates



Note: Case counts and rates are calculated by *confirmed* and *probable* cases reported to the Health Department.

To calculate rates, counts are divided by 2019 Vermont population estimates for respective category and expressed per 100,000 in each category.

Due to a high number of cases missing race/ethnicity data, rates are not provided for race/ethnicity categories.

## COVID-19 Outbreaks Reported May 2 to May 8

For purposes of this report, an outbreak is defined as three or more epidemiologically linked cases of COVID-19, where at least one such case has been laboratory or otherwise clinically confirmed as COVID-19.

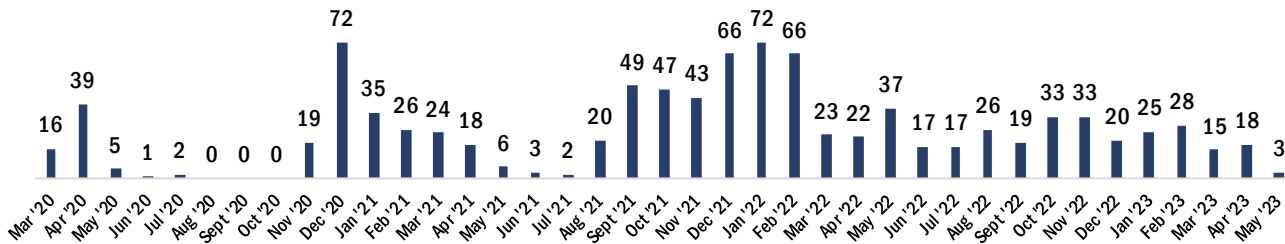
Facility type	New Outbreaks Reported 5/2 – 5/8
Long-term Care (LTC)	1
Non-LTC Healthcare	-
Correctional Facility	-
School/childcare	-
Other	-

County	New Outbreaks Reported 5/2 – 5/8
Addison	-
Bennington	-
Caledonia	-
Chittenden	-
Essex	-
Franklin	-
Grand Isle	-
Lamoille	-
Orange	-
Orleans	-
Rutland	-
Washington	-
Windham	-
Windsor	1

## Cumulative COVID-19 Deaths as of May 6, 2023

Total	Age group								
	Under 10	10-19	20-29	30-39	40-49	50-59	60-69	70-79	80+
967	1	0	2	11	18	66	99	224	546

## Monthly COVID-19 Deaths



Note: Deaths are from registered death certificates and represent preliminary data. A change in death count may represent new deaths, corrections, or other updates.

Data Source: Vermont Department of Health Vital Statistics System

For more information about this report, please contact [john.davy@vermont.gov](mailto:john.davy@vermont.gov)