

## Report Timeframe: August 20 to August 26, 2023

**Statewide hospitalization levels: Low.** New COVID-19 admissions are below 10 per 100,000 Vermonters per day.

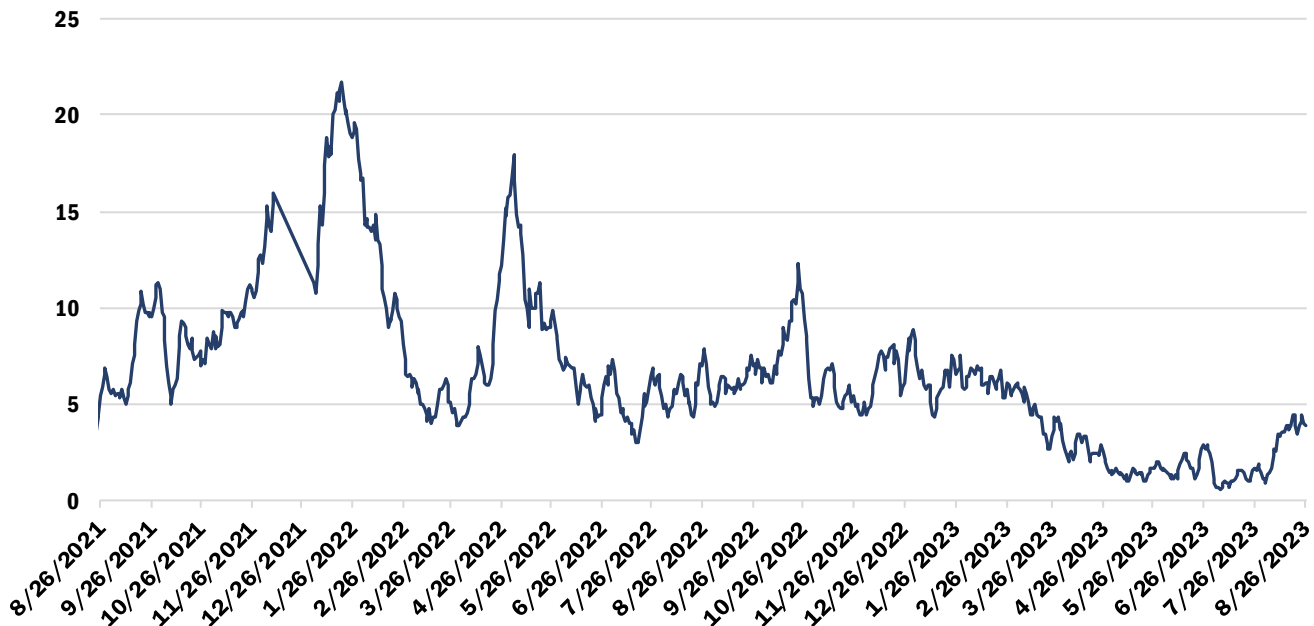
- New hospital admissions of patients with COVID-19, last 7 days: 4.33 per 100K
  - 27 total new admissions with COVID-19

The number of reportable COVID-19 cases is still available in this report, below. Laboratory-confirmed and diagnosed COVID-19 cases and COVID-19 outbreaks must still be reported to the Vermont Department of Health

Vermont Department of Health recommendations: [Preventing COVID-19 \(healthvermont.gov\)](https://healthvermont.gov/preventing-covid-19)

## Hospitalizations Over Time

### Daily Hospitalizations With COVID-19 Diagnosis Seven-Day Rolling Average



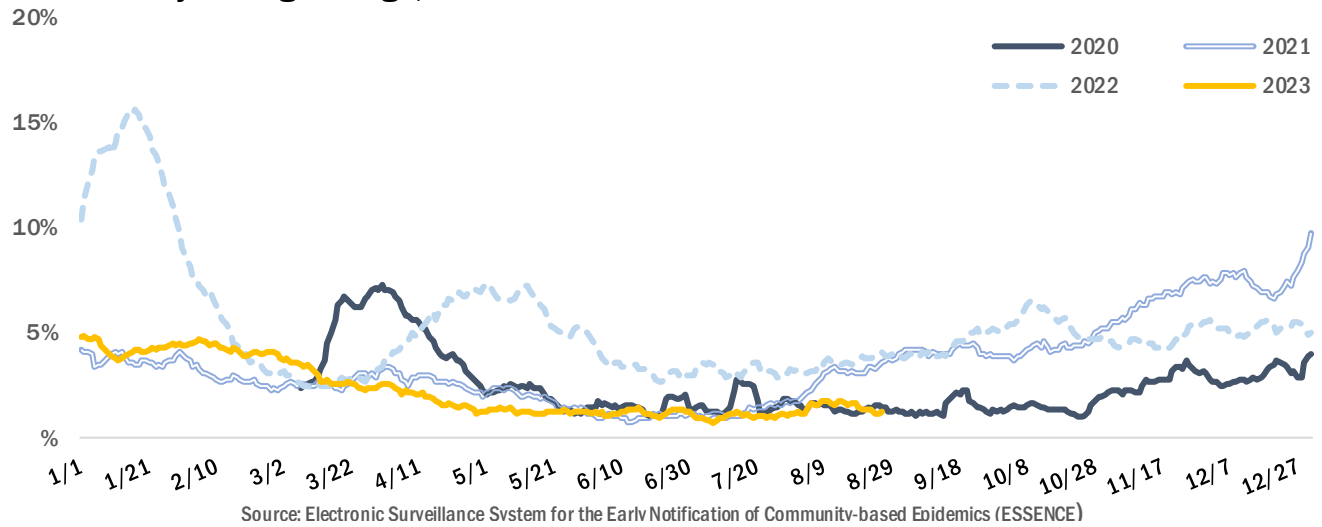
Source: U.S. Department of Health and Human Services HHS Protect

The seven-day rolling average of hospital patients admitted with a laboratory-confirmed COVID-19 has remained around four, following about three weeks of increasing averages. The number is the daily average of the previous seven days; for example, the value for May 28 is the daily average for the days of May 21 through May 27.

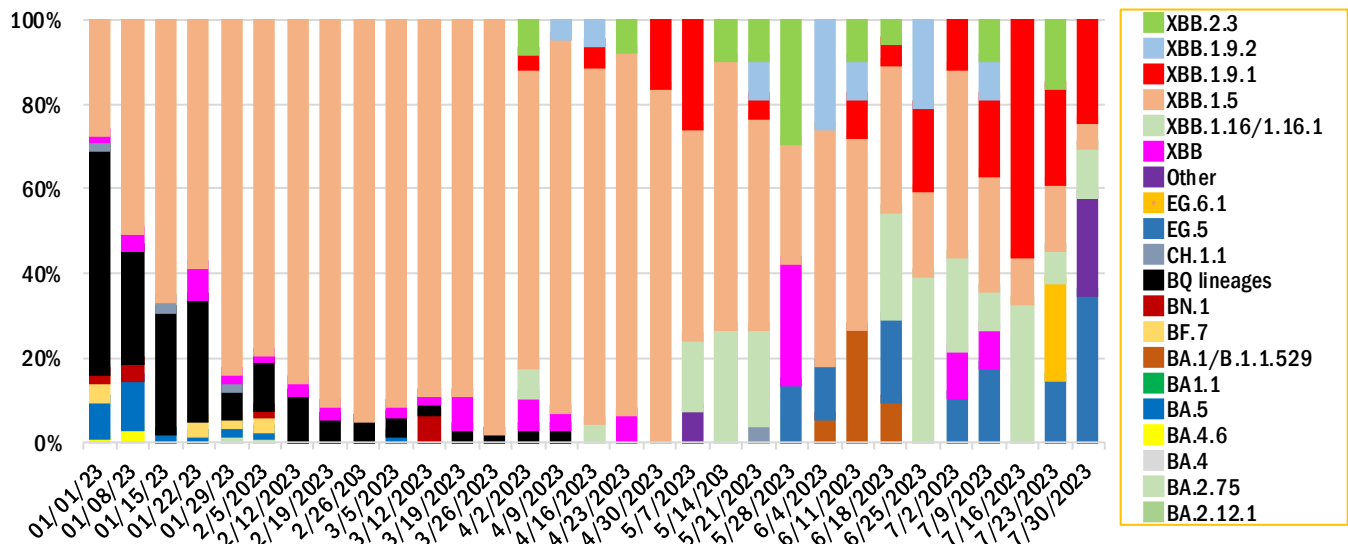
## Syndromic Surveillance

The Electronic Surveillance System for the Early Notification of Community-based Epidemics (ESSENCE) reflects all visits from participating emergency departments<sup>1</sup>, to identify visits for COVID-Like Illness (CLI). During this reporting period the proportion of emergency visits in participating departments that included CLI was over 1%, lower than the same time in 2021 and 2022.

### Percent of Emergency Visits with COVID-Like Illness Seven-Day Rolling Average, over Calendar Year



## Proportion of sequenced variants



Only 5 specimens are available for the week of 6/25/23. (Sources: LabCorp, Quest, Helix, Health Department Whole Genome Sequencing program)

<sup>1</sup> All Vermont hospitals and two urgent care clinics are included in ESSENCE.

### Wastewater Monitoring



Several Vermont wastewater districts participate with the National Wastewater Surveillance System (NWSS). Montpelier has recently been added as a new site.

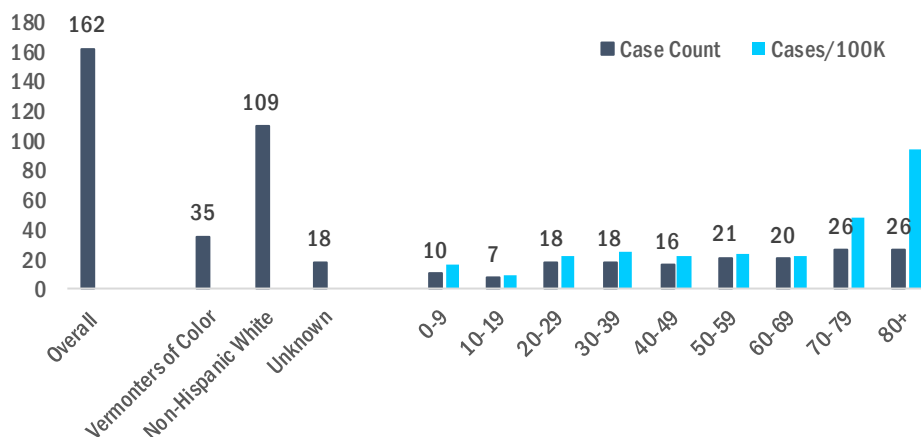
Starting on 8/17/23, wastewater monitoring results are described by how their COVID-19 measurements have been trending. Trend categories are: Sustained Decrease, Decrease, Plateau, Increase, and Sustained Increase.

| NWSS Site                | Current Trend |
|--------------------------|---------------|
| Bennington               | Plateau       |
| Brighton                 | *             |
| Burlington (Main plant)  | Plateau       |
| Burlington (North plant) | Decrease      |
| Essex Junction           | Decrease      |
| Montpelier               | Plateau       |
| Ludlow                   | Plateau       |
| South Burlington         | Plateau       |
| St. Albans City          | Plateau       |
| St. Johnsbury            | Plateau       |
| Troy / Jay WWTP          | Plateau       |
| Winooski                 | Plateau       |

\*Data will be reported when available.

### Identified Cases

Vermont Weekly Case Counts/Rates



Note: Case counts and rates are calculated by *confirmed* and *probable* cases reported to the Health Department.

To calculate rates, counts are divided by 2019 Vermont population estimates for respective category and expressed per 100,000 in each category.

Due to a high number of cases missing race/ethnicity data, rates are not provided for race/ethnicity categories.

### COVID-19 Outbreaks Reported August 22 to August 28

For purposes of this report, an outbreak is defined as three or more epidemiologically linked cases of COVID-19, where at least one such case has been laboratory or otherwise clinically confirmed as COVID-19.

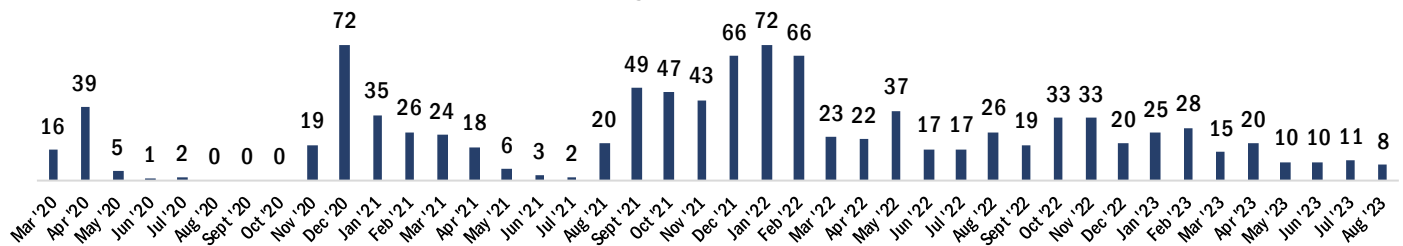
| Facility type         | New Outbreaks Reported 8/22 – 8/28 |
|-----------------------|------------------------------------|
| Long-term Care (LTC)  | -                                  |
| Non-LTC Healthcare    | 3                                  |
| Correctional Facility | -                                  |
| School/childcare      | -                                  |
| Other                 | -                                  |

| County     | New Outbreaks Reported 8/22 – 8/28 |
|------------|------------------------------------|
| Addison    | 2                                  |
| Bennington | -                                  |
| Caledonia  | -                                  |
| Chittenden | -                                  |
| Essex      | -                                  |
| Franklin   | -                                  |
| Grand Isle | -                                  |
| Lamoille   | -                                  |
| Orange     | -                                  |
| Orleans    | -                                  |
| Rutland    | -                                  |
| Washington | -                                  |
| Windham    | 1                                  |
| Windsor    | -                                  |

### Cumulative COVID-19 Deaths as of August 26, 2023

| Total | Age group |       |       |       |       |       |       |       |     |
|-------|-----------|-------|-------|-------|-------|-------|-------|-------|-----|
|       | Under 10  | 10-19 | 20-29 | 30-39 | 40-49 | 50-59 | 60-69 | 70-79 | 80+ |
| 1005  | 1         | 0     | 2     | 11    | 19    | 71    | 102   | 230   | 569 |

### Monthly COVID-19 Deaths



Note: Deaths are from registered death certificates and represent preliminary data. A change in death count may represent new deaths, corrections, or other updates.

Data Source: Vermont Department of Health Vital Statistics System.

For more information about this report, please contact [john.davy@vermont.gov](mailto:john.davy@vermont.gov)