

# Mube Maso ku vyerekeranye n'inyondwi



**IKINGIRE • ISUZUME • IKURAKO • RABA**

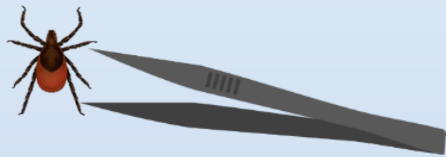


## IKINGIRE

Kwirinda kugendera ahantu ziba, nko mu vyatsi vyinshi, canke ikirundo c'amababi. Koresha umuti wo kuzirinda wanditswe na EPA. Kwambara impuzu zikwiye kugire Inyondwi ntizikuje ku mubiri.

## ISUZUME

Ntureke inyondwi ngo zishike mu nzu, mu mpuzu. Suzuma ku mubiri ko ata nyondwi ufise.



## IKURAKO

Ikureko inyondwi ukiyibona. Koresha akuma ko gushitura.

## RABA

Raba ibimenyetso vy'indwara iterwa n'inyondwi. Bibwire muganga ubonye ivyo bimenyetso.



Kirundi  
4.2018

 VERMONT

DEPARTMENT OF HEALTH

[healthvermont.gov/BeTickSmart](http://healthvermont.gov/BeTickSmart)