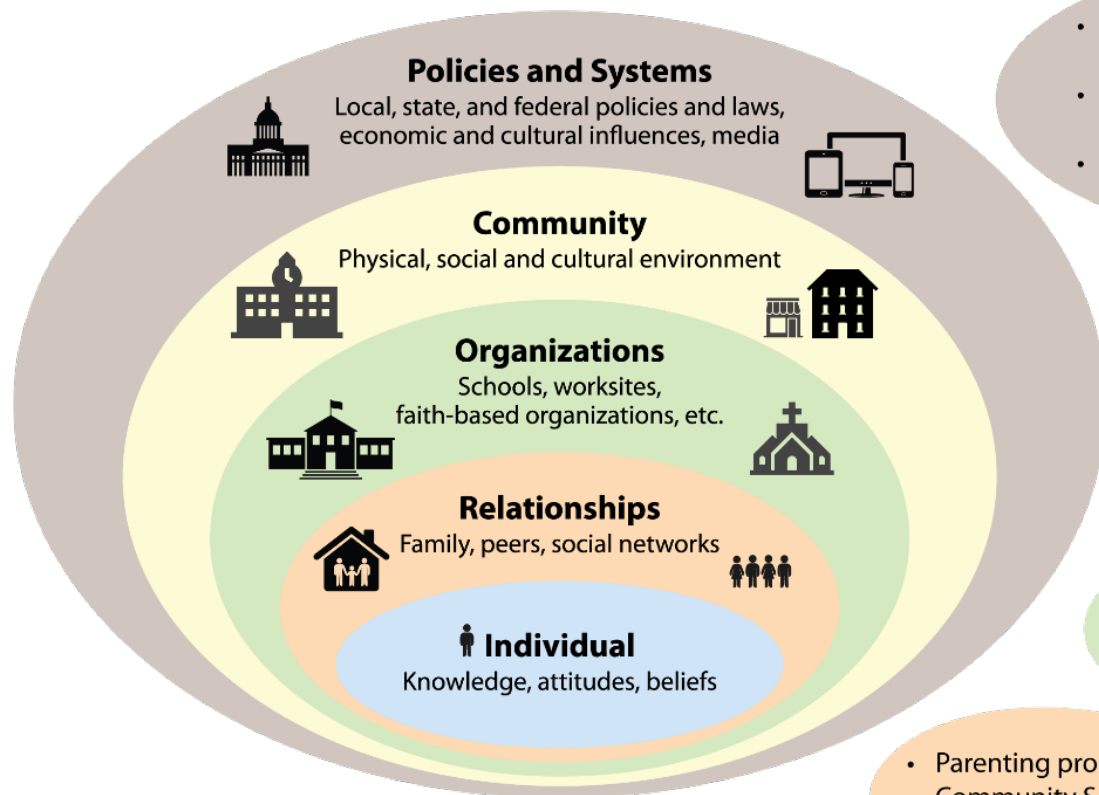




# Review of Strategies and Recommendations MAC, Prevention and Education Subcommittee

Mark A. Levine, MD – Commissioner

# Substance Misuse Prevention Model



## What the Health Department and partners are doing in our communities

- Laws and ordinances to reduce access and density of substances
- Taxes to reduce youth and young adult consumption
- Media and educational campaigns

- Rental housing rules and recommendations
- Retail sales limits
- Town planning guidance
- Substance-free events

- School and worksite wellness
- School and worksite substance use policies and recommendations

- Parenting programs
- Community Services
- Volunteering

- Youth empowerment
- Mentoring
- Education

# Lessons from Tobacco and Alcohol that Could Apply to Cannabis Regulation

- ❑ Smoke-free policies
- ❑ Limiting access to youth: outlet density, type of outlet
- ❑ Taxation, minimum price laws
- ❑ Allowing local control over outlet density and advertising
- ❑ Restrict access by age
- ❑ Child-resistant packaging
- ❑ Limiting advertising and internet sales
- ❑ Enforcement of laws

# Recommendations Requiring Prevention Funding

- Establish a substance misuse prevention fund - \$7M
  - ▣ Substance misuse advisory committee
- Sustained, comprehensive strategies
- Substance misuse prevention is not substance-specific

# Substance Misuse Prevention Strategy and Funding Needs

- Establish six regional prevention networks - \$6M
  - ▣ Apply Strategic Prevention Framework
  - ▣ Example of approaches: 7 Strategies for Change from Community Anti-Drug Coalitions of America
  - ▣ Examples of programming:
    - Iceland model
    - Vermont Afterschool
    - Deerfield Valley Community Partnership

# Substance Misuse Prevention Strategy and Funding Needs

- Substance Misuse Advisory Committee - \$10,000
- Evaluation - \$500,000
- Media and communication strategies - \$300,000
- VDH – 1 FTE - \$100,000

# School-Based Prevention - \$15M

- 1 Full time substance use prevention professional per 250 students
- Scale up over five years

# Research and Policy

- Research on health effects - \$1 M annually
- Policy Level recommendations, no funding needed
  - ▣ Put infrastructure in place before sales begin
  - ▣ Prohibit sale of edibles on the regulated market (infused products)
  - ▣ Protection for children
  - ▣ Restrict advertising