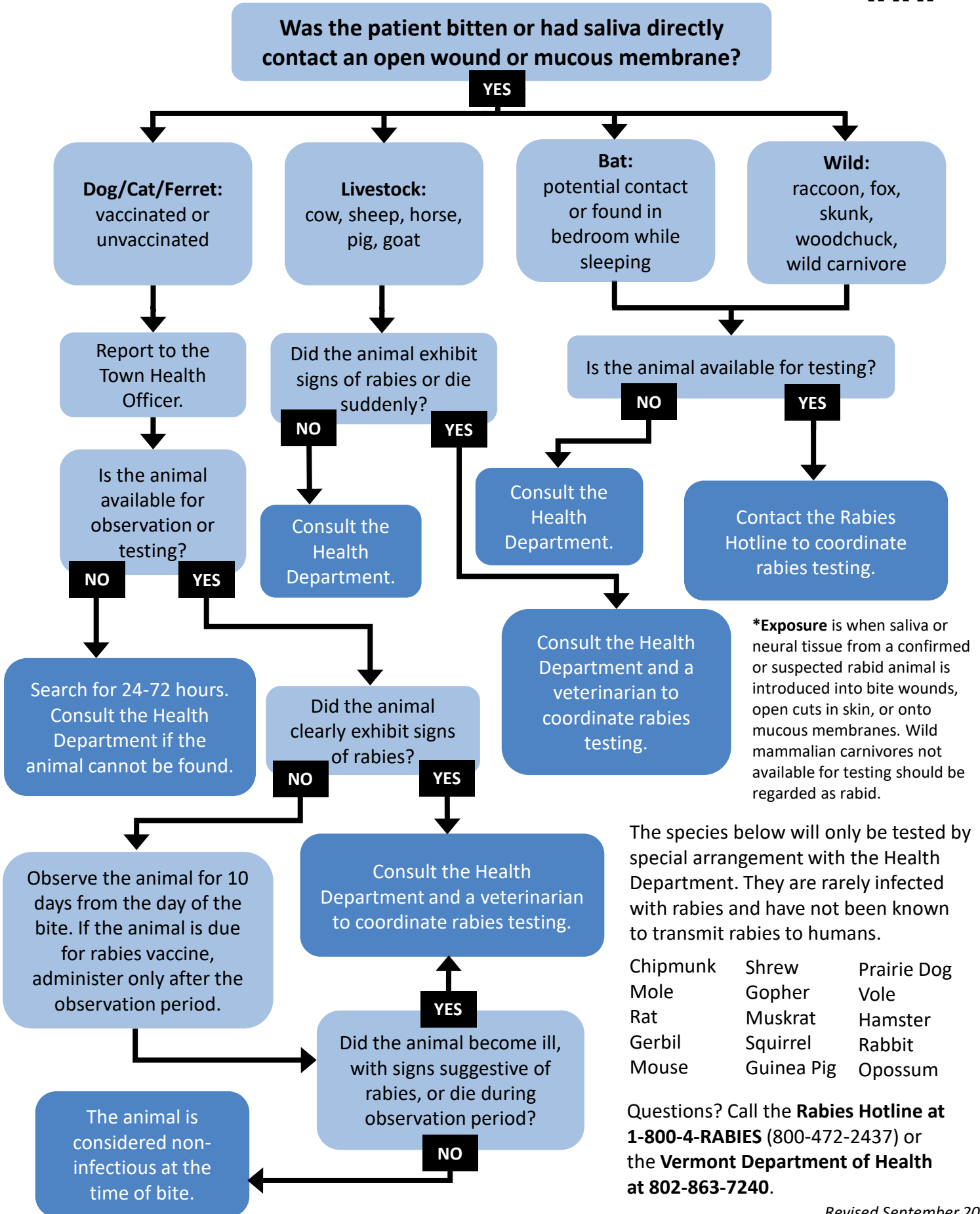




Management of Potential Human Exposures* to Rabies





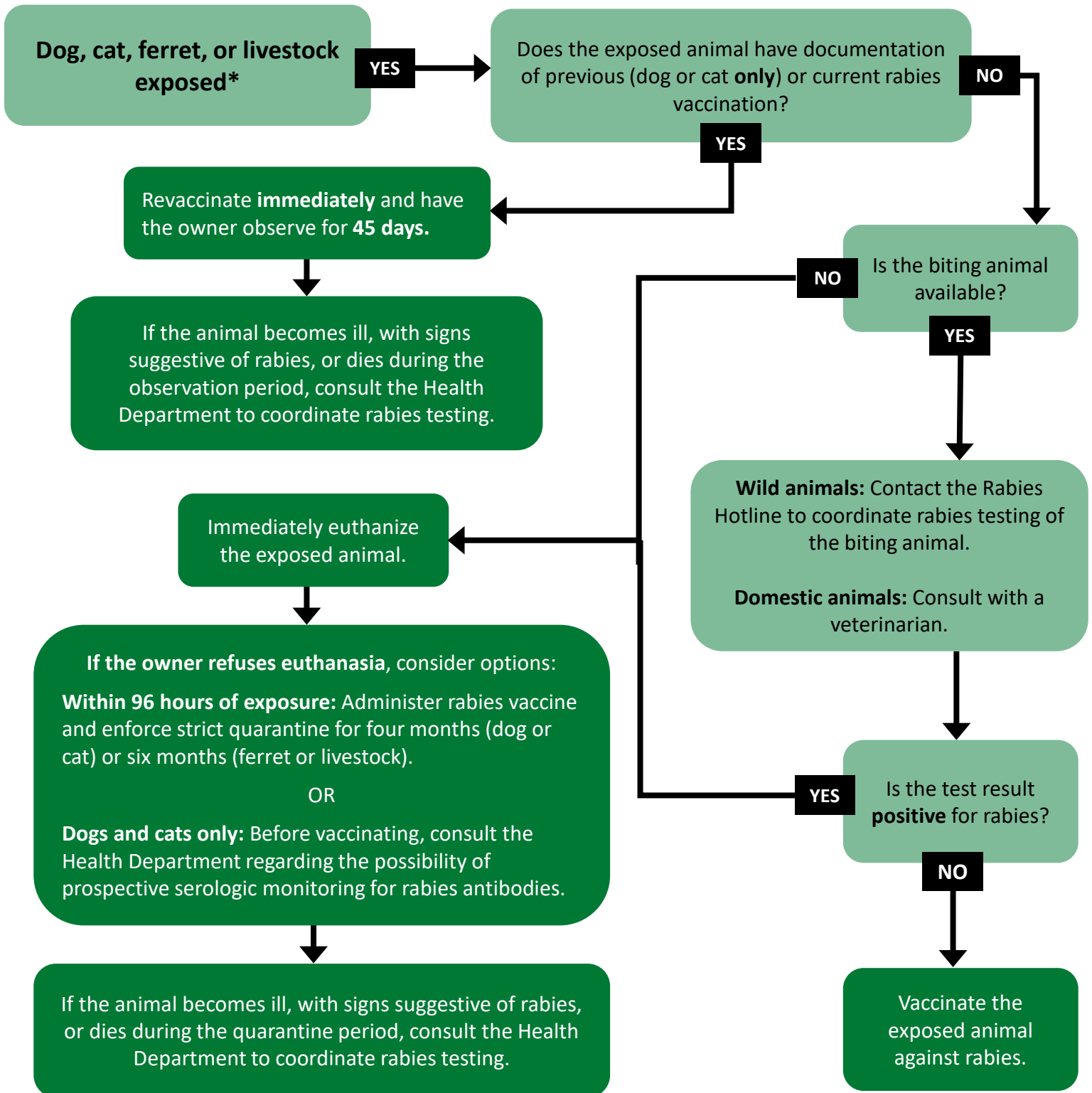
Management of Potential Bat-related Rabies Exposures*



***Exposure** is when saliva or neural tissue from a confirmed or suspected rabid animal is introduced into bite wounds, open cuts in skin, or onto mucous membranes. Wild mammalian carnivores not available for testing should be regarded as rabid.

Questions? Call the **Rabies Hotline** at **1-800-4-RABIES** (800-472-2437) or the **Vermont Department of Health** at **802-863-7240**.

Management of Potential Pet Exposures* to Rabies



Questions? Call the **Rabies Hotline at 1-800-4-RABIES (800-472-2437)**
or the **Vermont Department of Health at 802-863-7240.**

***Exposure** is when saliva or neural tissue from a confirmed or suspected rabid animal is introduced into bite wounds, open cuts in skin, or onto mucous membranes. Wild mammalian carnivores not available for testing should be regarded as rabid.