



Each school will receive a letter from the State that details the indoor air test results for PCBs and next steps. Results at or above the school action level may indicate that PCB sources are likely present. There are three temporary occupancy options that schools can choose from while they are working with the State to address the PCB sources.

The diagram on the next page shows the three temporary occupancy options. **All these options will protect students and staff – to different degrees – from exposure to PCBs while the school works to lower the levels over the long term.** Since each school is different, these options will be described in detail in the individualized school letter.

In general, **the Health Department recommends that levels of PCBs in the indoor air of schools be kept as low as possible.**

- This means that **option 1** is the recommended option since it achieves the lowest risk of PCB exposure to students and staff. This option gives schools **up to one year** to lower levels of PCBs in indoor air.
- **Options 2 and 3** are provided to give schools other choices if option 1 is not feasible. These options accept more risk of PCB exposure to students and staff, but they give schools a shortened timeline – **up to six weeks** – to start addressing PCB source(s).

If levels of PCBs are found at three times the level of the school action level – known as the immediate action level – those rooms will not be able to be used in any of the options.

The U.S. Environmental Protection Agency (EPA) regulates PCBs in building materials. If building materials are found to contain PCBs above federal standards, the occupancy options may also need to be discussed with and approved by the EPA.

School Action Levels

The school action levels are different depending on the lowest grade of students in the school. The three school action levels are:

- 30 ng/m³ for pre-kindergarten
- 60 ng/m³ for kindergarten through 6th grade
- 100 ng/m³ for 7th grade through adult

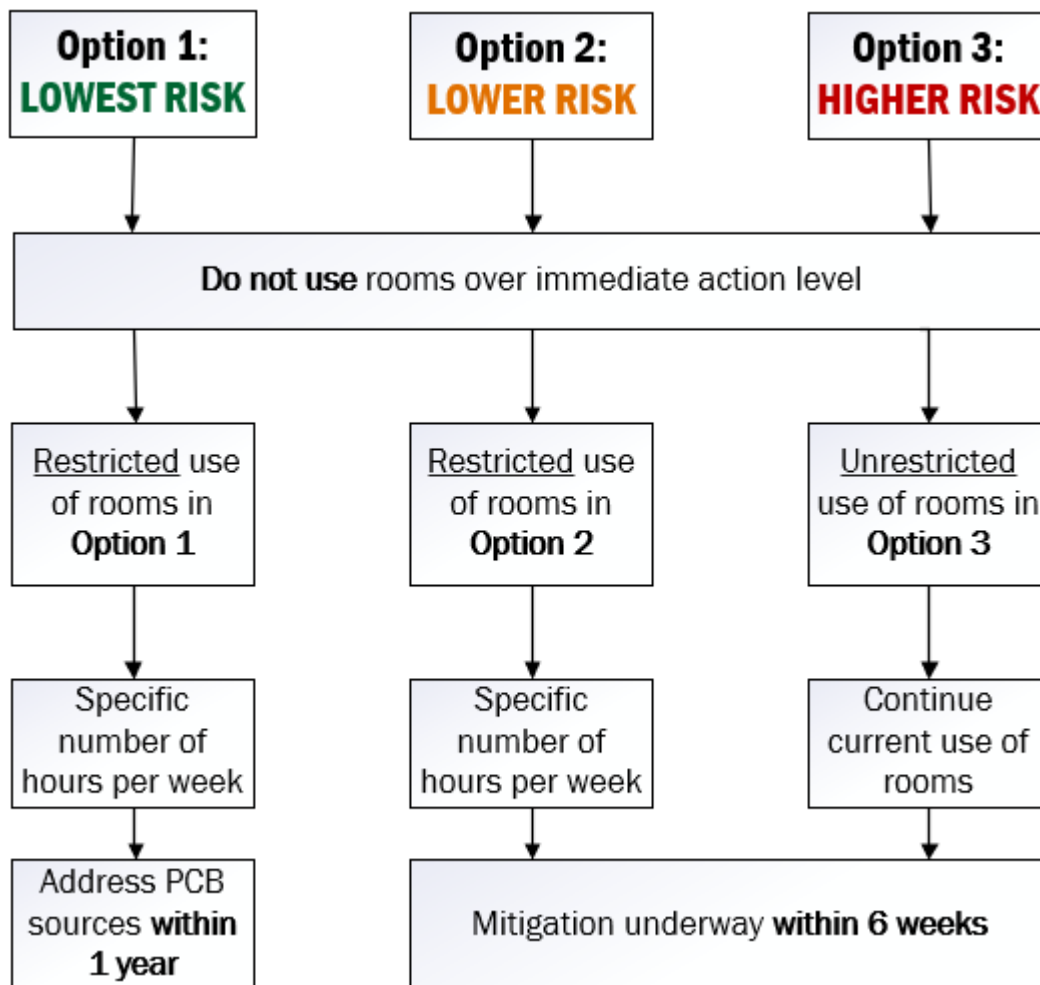
ng/m³ = nanograms per cubic meter

Immediate Action Levels

The immediate action levels are three times higher than the school action levels. Since these levels pose a greater exposure risk, **no room that is at or above these levels will be able to be used.** The three immediate action levels are:

- 90 ng/m³ for pre-kindergarten
- 180 ng/m³ for kindergarten through 6th grade
- 300 ng/m³ for 7th grade through adult

ng/m³ = nanograms per cubic meter



For more information about PCBs in schools: dec.vermont.gov/pcb-schools