

Provider & Hospital Support of Breastfeeding Vermont PRAMS 2009-2011

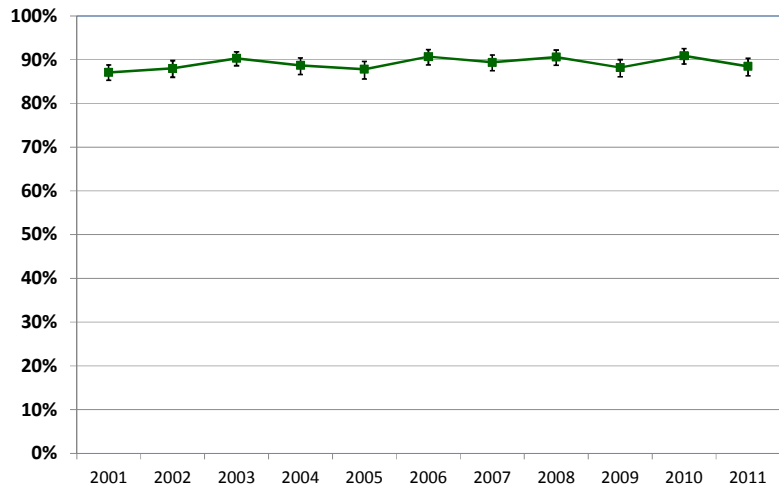
This is a report on the Pregnancy Risk Assessment Monitoring System (PRAMS), a survey conducted on a sample of Vermont women with live births since 2001. This report presents information on breastfeeding counseling during prenatal care visits, and on hospital support of breastfeeding, for births to Vermont residents in the years 2009 through 2011.

Prenatal Counseling on Breastfeeding

The percentage of Vermont mothers reporting that breastfeeding was a topic a health care worker discussed during prenatal care has remained close to 90%.

In 2011, 88.5% of Vermont births involved a prenatal care visit during which breastfeeding was discussed.

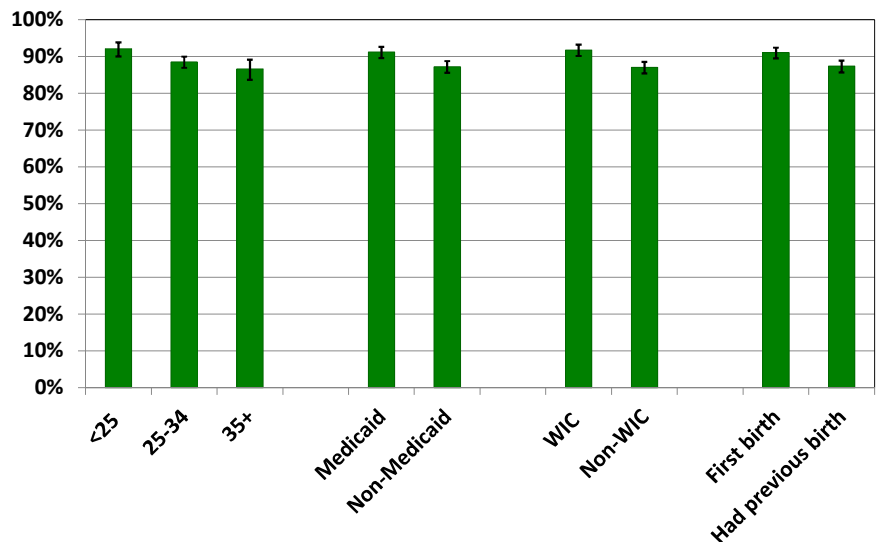
**Discussed Breastfeeding During a Prenatal Care Visit
Vermont 2001-2011**



Within each category of income, age, childbirth history, Medicaid or WIC enrollment, and level of education, at least 85% of mothers had received prenatal counseling on breastfeeding.

Mothers who were older than 35 years of age were significantly less likely to have had breastfeeding counseling during prenatal care than mothers who were younger than 25, and those enrolled in WIC and Medicaid were more likely to have received counseling than those not enrolled. Women who had not previously given birth were also more likely to be counseled on breastfeeding.

**Prenatal Care Counseling on Breastfeeding
Vermont 2009-2011**



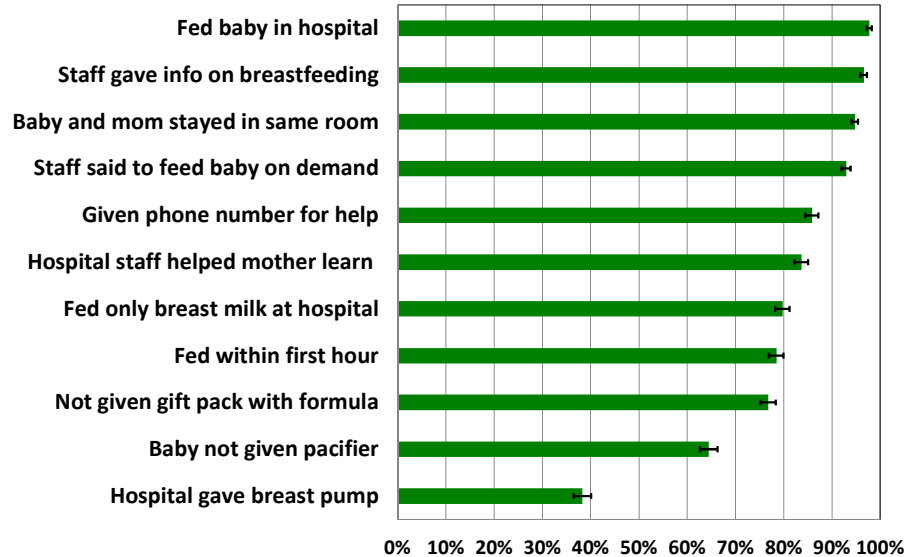
Hospital Support of Breastfeeding

The PRAMS questionnaire also asked a series of questions about hospital support of breastfeeding. (Women who didn't breastfeed were excluded from the question.)

Less than half of new mothers who ever breastfed were given a gift pack with formula, or had babies who had been given a pacifier in the hospital.

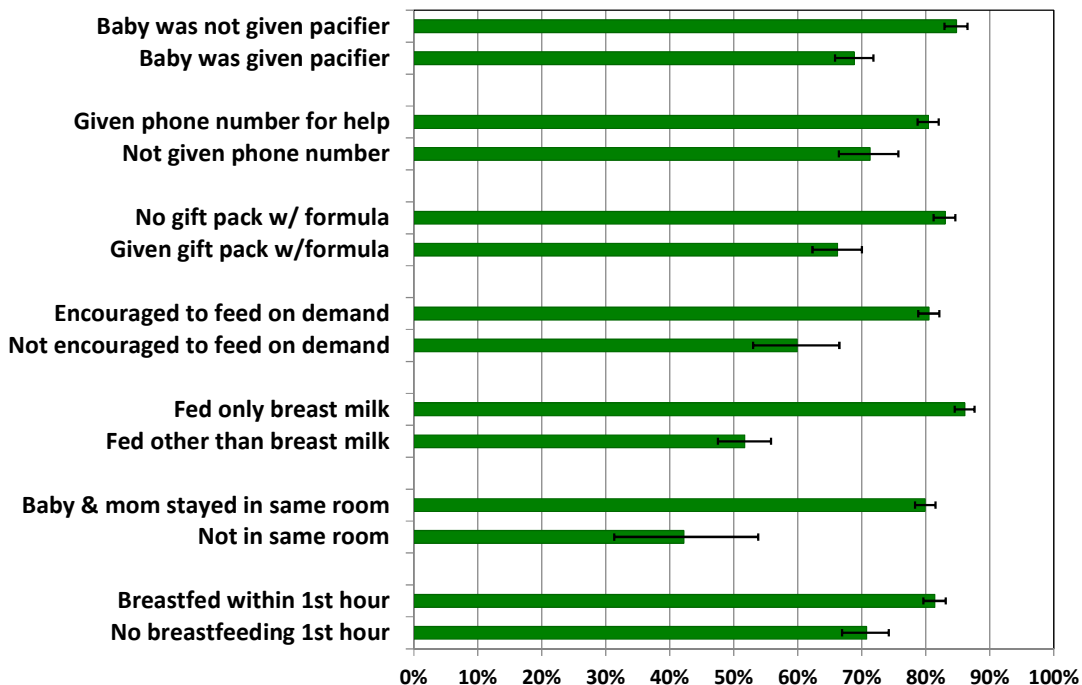
While only 38.2% of mothers were given a breast pump at the hospital, 75.1% of mothers of low birthweight (LBW) babies were given one. LBW infants are more likely to be separated from their mothers at birth, necessitating a breast pump for those mothers who intend to breastfeed.

Hospital Support of Breastfeeding
Vermont Infants Breastfed at Least Once, 2009-2011



Many of these supportive hospital practices were associated with higher rates of breastfeeding at 8 weeks:

Breastfeeding at 8 Weeks by Hospital Support
Vermont Infants Breastfed at Least Once, 2009-2011



The following PRAMS questions were used for this data brief:

Did you ever breastfeed or pump breast milk to feed your new baby, even for a short period of time?

Are you currently breastfeeding or feeding pumped milk to your new baby?

How many weeks or months did you breastfeed or pump milk to feed your baby?

During any of your prenatal care visits, did a doctor, nurse, or other health care worker talk with you about any of the things listed below?

- Breastfeeding my baby

This question asks about things that may have happened at the hospital where your new baby was born:

- Hospital staff gave me information about breastfeeding
- My baby stayed in the same room with me at the hospital
- I breastfed my baby in the hospital
- I breastfed in the first hour after my baby was born
- Hospital staff helped me learn how to breastfeed
- My baby was fed only breast milk at the hospital
- Hospital staff told me to breastfeed whenever my baby wanted
- The hospital gave me a breast pump to use
- The hospital gave me a gift pack with formula
- The hospital gave me a telephone number to call for help with breastfeeding
- My baby used a pacifier in the hospital

Data brief by statistics intern Yi Bi and Vermont PRAMS. Questions or comments about this report may be directed to John Davy at (802)863-7661 or john.davy@vermont.gov. More information about Vermont PRAMS can also be found at <http://healthvermont.gov/research/PRAMS/prams.aspx>.