



2009 Emergency Department Hospital Utilization Report

Prepared by

Vermont Department of Health

**Vermont Department of Banking, Insurance,
Securities and Health Care Administration**



2009

Vermont Emergency Department Hospital Utilization Report

October 2011

**Department of Banking, Insurance, Securities
and Health Care Administration**

Department of Health

This report was produced in cooperation with the Department of Health, Division of Health Surveillance

Barbara Carroll, Public Health Analyst
Peggy Brozicevic, Research and Statistics Chief

Under the direction of the Vermont Department of Banking, Insurance, Securities and Health Care Administration,
Division of Health Care Administration

Dian Kahn, Director of Analysis and Data Management

The Department of Health
Division of Health Surveillance
108 Cherry Street, PO Box 70
Burlington, Vermont 05402-0070
(802) 863-7300 or (800) 869-2871

The Division of Health Care Administration
89 Main Street, Drawer 20
Montpelier, Vermont 05620-3601
(802) 828-2900 or (800) 631-7788
www.bishca.state.vt.us

Acknowledgments

The production of this document would not be possible without the assistance of many individuals and the cooperation of the hospitals.

The Vermont Department of Banking, Insurance, Securities and Health Care Administration (BISHCA) thanks the Vermont Association of Hospitals and Health Systems - Network Services Organization (VAHHS-NSO) for providing assistance under a contract with the department and for working with the hospitals to ensure timely and accurate reporting of the data. BISHCA also thanks the participating hospitals for their efforts in submitting the data and responding to requests for clarification and corrections. In addition, BISHCA appreciates the sharing of data by the New Hampshire Department of Health and Human Services, the Massachusetts Division of Health Care Finance and Policy and the New York Department of Health. These organizations provide data about Vermont residents using New Hampshire, Massachusetts and New York hospitals.

Disclaimer

Hospital discharge data for use in this publication were supplied by the VAHHS-NSO reporting system, Vermont EXPLOR, under a contract with BISHCA. These data were supplied upon the authorization of the hospitals through agreements between VAHHS-NSO and each participating hospital.

After receipt of the data files from VAHHS-NSO, the data undergo additional editing and processing by the Vermont Department of Health (VDH), under an agreement with BISHCA, before inclusion in the Vermont Uniform Hospital Discharge

Data Set. The Vermont Uniform Hospital Discharge Data Set is used to construct this Hospital Utilization Report and is the official state data file, available to the public. The Health Department does not assume responsibility for errors in the data due to coding or processing by hospitals, VAHHS-NSO Vermont Explor, or other data providers.

Report Available in Electronic Format

This report is available on the BISHCA website:

<http://www.bishca.state.vt.us/health-care/research-data-reports/vermont-hospital-utilization-reports-vhur>

and on the VDH website:

<http://healthvermont.gov/research/hospital-utilization.aspx>. To obtain a hard copy of this report, or tables in Excel, Word or PDF formats, contact the Vermont Department of Health at (802) 863-7300 or (800) 869-2871.

Requesting Hospital Data Files

Public Use data files are available on the VDH website:

<http://healthvermont.gov/research/hospital-utilization.aspx>.

Information on requesting research hospital discharge data sets (with non-public data elements not included in Public Use data files) can be found on the BISHCA website:

<http://www.bishca.state.vt.us/health-care/research-data-reports/vuhdds-frequently-asked-questions>.

For any additional information concerning the data sets, contact the Vermont Division of Health Care Administration at (802) 828-2900 or (800) 631-7788.

Table of Contents

Emergency Department Highlights.....	5
User’s Guide to the Emergency Department Tables.....	12
Table E1a	15
Clinical Classifications Software (CCS) High Level Diagnosis Groups by Type of ED Visit, 2005-2009	
Table E1b	17
Clinical Classifications Software (CCS) High Level Diagnosis Groups by Type of ED Visit, 2009	
Table E2	18
Clinical Classifications Software (CCS) High Level and Leading Single-Level Diagnosis Groups by Type of ED Visit, 2009	
Table E3	21
Vermont Hospitals by Type of ED Visit, 2009	
Table E4	22
Clinical Classifications Software (CCS) High Level Diagnosis Groups by Age, 2009	
Table E5	26
Clinical Classifications Software (CCS) High Level Diagnosis Groups by Sex and Age, 2009	
Table E6	30
Clinical Classifications Software (CCS) High Level Diagnosis Groups by Primary Payer, 2009	
Table E7	32
Primary Payer by Age, 2009	
Table E8a	33
Clinical Classifications Software (CCS) High Level Diagnosis Groups by Vermont Hospitals, 2005-2009	
Table E8b	35
Clinical Classifications Software (CCS) High Level Diagnosis Groups by Vermont Hospitals, 2009	
Table E9	37
Primary Payer by Vermont Hospitals, 2009	
Table E10	38
Clinical Classifications Software (CCS) High Level Diagnosis Groups by VT, NH, MA and NY Hospitals, 2009	
Table E11a	40
Patient Origin Report, ED Visits Not Admitted by Hospital Service Area, 2009	
Table E11b	41
Patient Origin Report, ED Visits Not Admitted by Hospital Service Area and Ziptown, 2009	
Table E12	53
Utilization by Hospital Service Area and Clinical Classification Software (CCS) High Level Diagnosis Group, 2009	
 <i>Appendices</i>	
Appendix E1: Definitions and Formulae	63
Appendix E2: 2009 Clinical Classifications Software (CCS) High-Level and Single-Level Diagnosis Categories ..	65
Appendix E3: Towns and Hospitals in Vermont Hospital Service Areas.....	70
Appendix E4: Hospitals in this Report	74

Emergency Department Highlights

- **In 2009 there were a total of 261,157 Emergency Department visits to Vermont hospitals**, including both Vermont residents and non-residents. 90.9% or 237,488 of these ED visits were not admitted, while the remaining 9.12% or 23,669 of ED visits were admitted and categorized as inpatient discharges. (Table E1a)
- **New Hampshire reported 24,428 Vermont resident Emergency Department visits in New Hampshire hospitals** while Massachusetts reported 2,405 and New York reported 1,522 in 2009. All three border states saw a slight increase in Vermont resident ED visits compared to those in 2008. (Table E10)
- **The age-adjusted number of ED visits per 1000 population ranges from 271.4 in the Burlington Hospital Service Area to 540.6 in the St. Albans Hospital Service Area.** A map of Hospital Service Areas can be found on page 14. (Table E12)

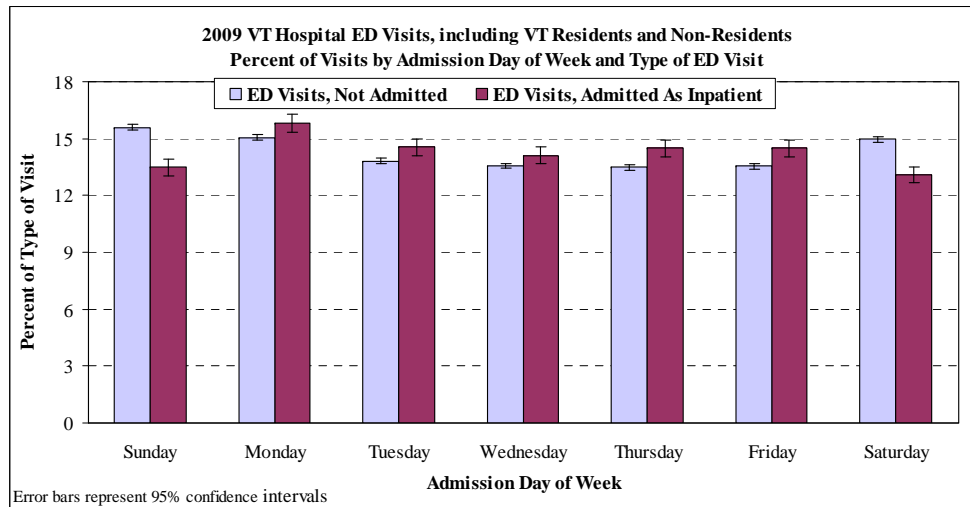


Figure 1
Data Source: 2009 VT Uniform Hospital Discharge Data Set

- **Saturday and Sunday have higher percents of ED visits to Vermont hospitals that did not result in an inpatient stay** than ED visits resulting in an inpatient admission. Lack of access to primary care physicians may contribute to the increased ED visits on weekends. Monday continues to have the highest percent of ED visits resulting in inpatient admissions.

Emergency Department Highlights

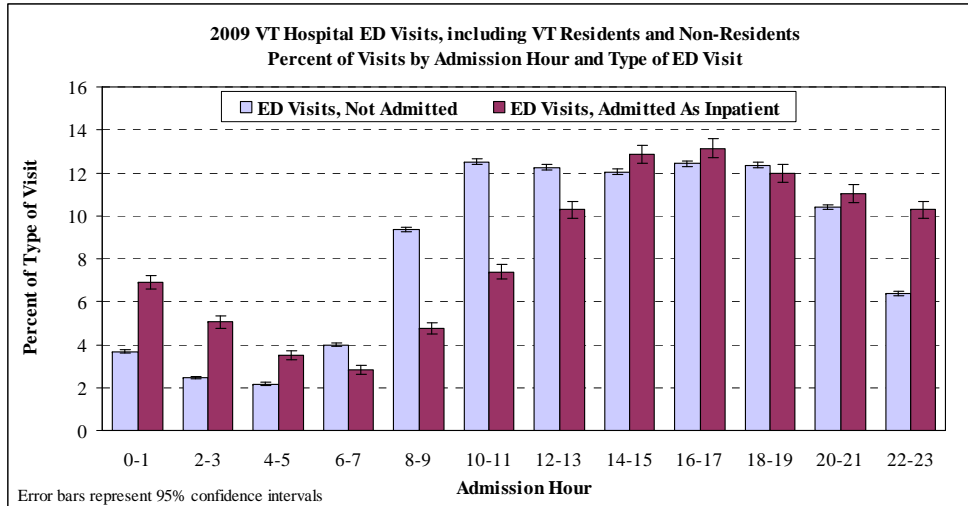


Figure 2
Data Source: 2009 VT Uniform Hospital Discharge Data Set

- **ED visits between 6AM and 2PM are less likely to result in an admission than any other time of the day.** This may be indicative of relatively higher acuity or other factors making it difficult to release patients during the overnight time period. The greatest numbers of ED visits occur between 2 pm and 10 pm, similar to findings in 2008.

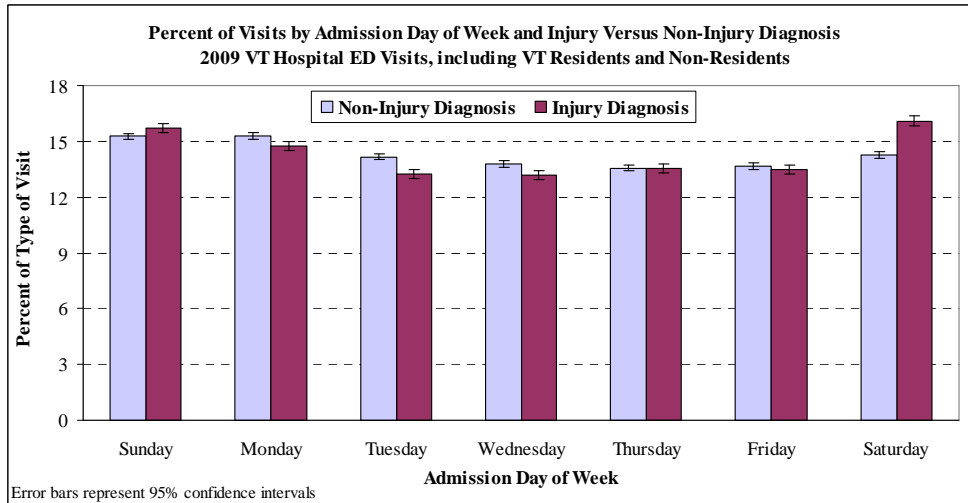


Figure 3
Data Source: 2009 VT Uniform Hospital Discharge Data Set

- **ED visits with injury diagnoses are more likely to occur on Saturday and Sunday than on any other day of the week, and are likely to occur more frequently than other diagnoses on these two days.**

Emergency Department Highlights

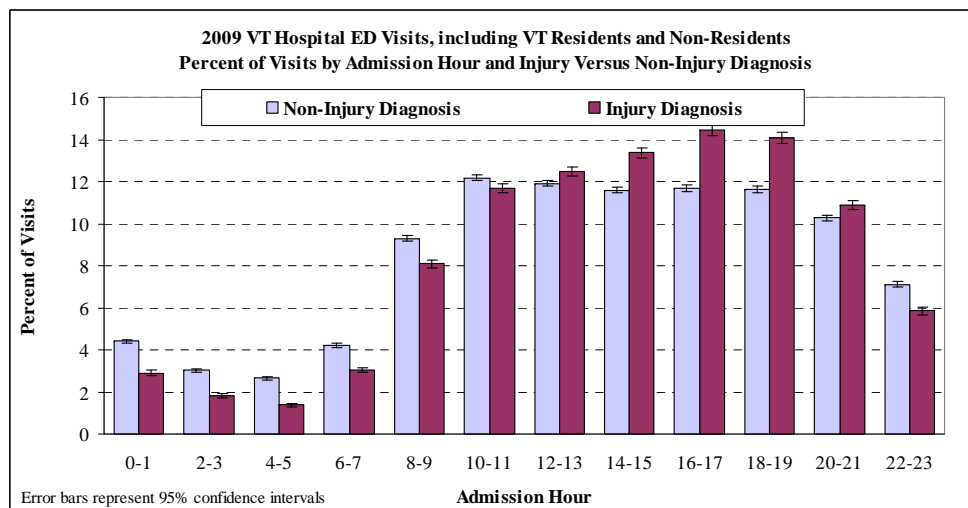


Figure 4

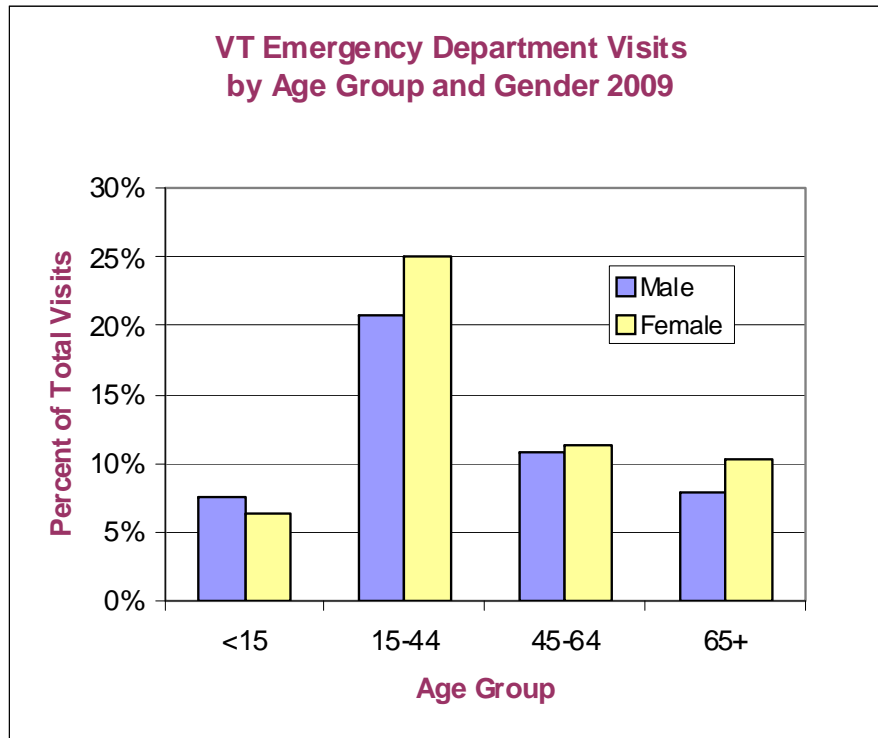
Data Source: 2009 VT Uniform Hospital Discharge Data Set

- **ED visits with injury diagnoses are more likely to occur between noon and 10PM than any other time of the day, similar to findings in 2008.**

For information on utilization of inpatient and outpatient hospital services, see the “**Vermont Hospital Utilization Reports**” at <http://www.bishca.state.vt.us/health-care/research-data-reports/vermont-hospital-utilization-reports-vhur> .

Emergency Department Highlights

Vermont Hospitals Patient Characteristics: Variations by Age and Sex



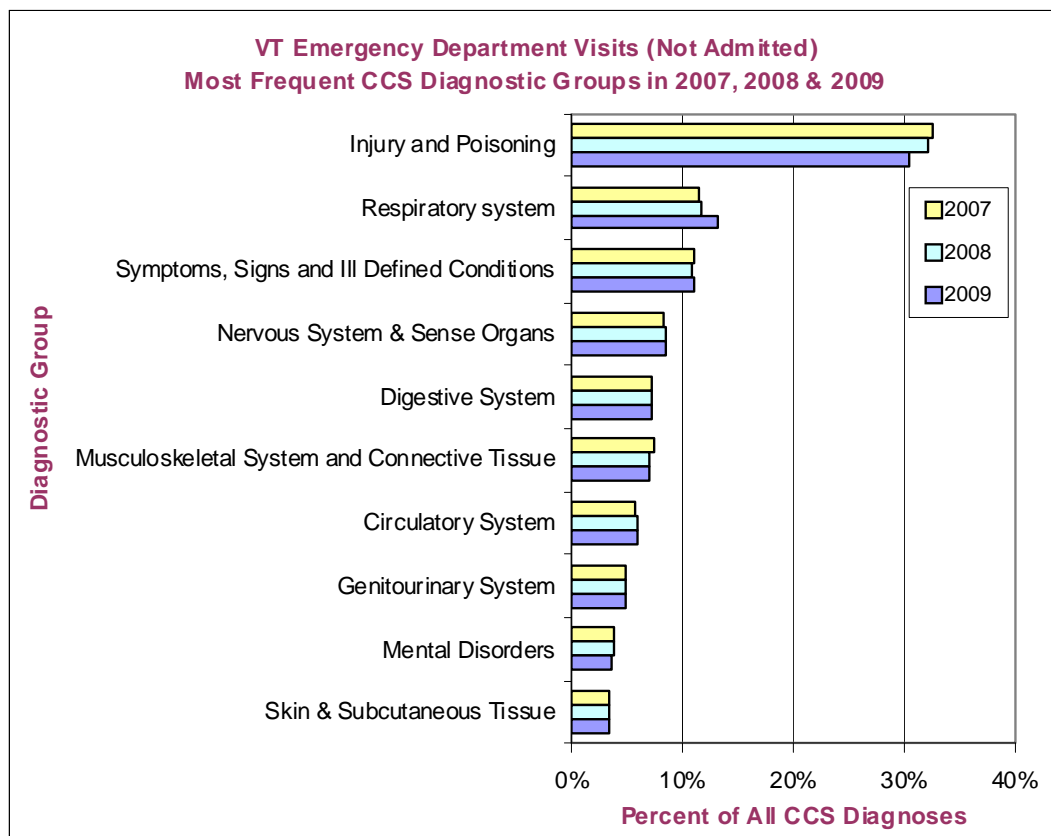
- The 15-44 year old age group accounted for 45.7% or 119,318 of all ED visits to Vermont hospitals in 2009.
- Females comprised 53% or 138,486 of all ED visits to Vermont hospitals in 2009.
- Females had a higher number of ED visits than males in all age groups except for the < 15 age group, which has been the trend for several years.

Figure 5

Data Source: 2009 VT Uniform Hospital Discharge Data Set and Table E5

Emergency Department Highlights

Emergency Department Visits in Vermont Hospitals: Top 10 CCS Diagnostic Groups



- **Injury and Poisoning** accounted for the most ED visits (not admitted) in 2009, at about 30%.
- Of the Top 10 CCS diagnostic groups, the percentage of visits decreased for **Injury and Poisoning, Musculoskeletal System & Connective Tissue, Mental Disorders, and Skin & Subcutaneous Tissue** from 2008 to 2009.
- There were no changes in rank of the Top 10 CCS diagnostic groups from 2007 to 2009.

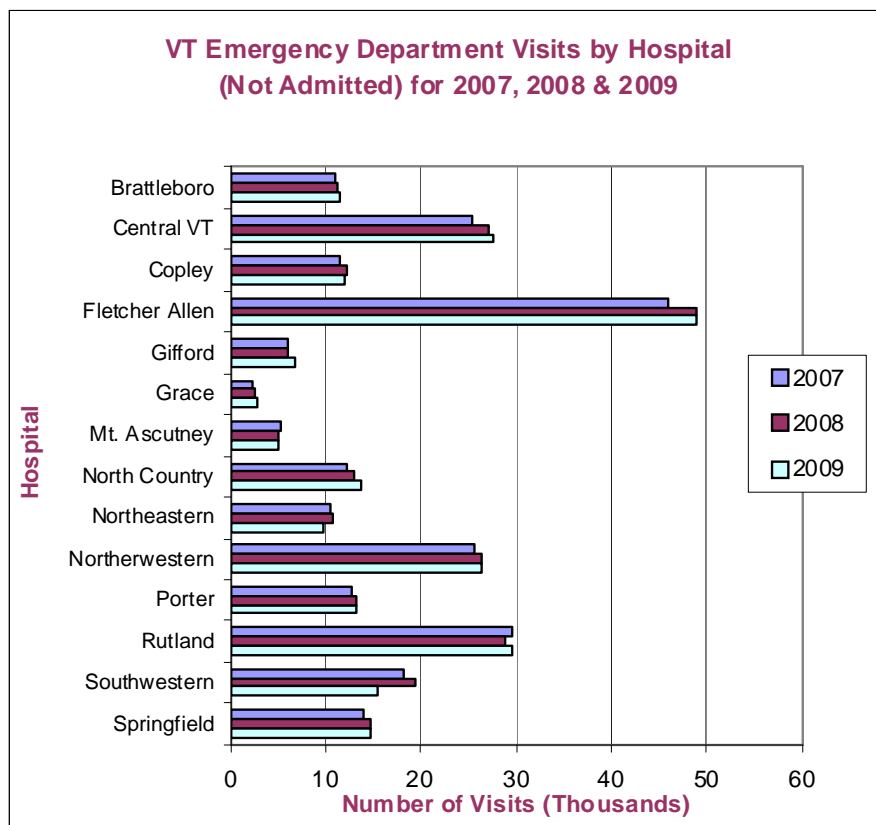
Figure 6

Data Source: 2007, 2008 & 2009 VT Uniform Hospital Discharge Data Sets and Table E1b

CCS (Clinical Classification Software) collapses principal diagnosis (over 12,000) and procedure codes (over 3,500) into meaningful, mutually exclusive categories (260).

Emergency Department Highlights

Vermont Hospital Trends: ED Visits without Admission by Hospital



- **Fletcher Allen** continues to have the highest number of visits to the Emergency Department without admission at 48,936 visits in 2009.
- **The percent of Emergency Department visits that were not admitted in 2009** ranged from 83.9% at Southwestern Vermont Medical Center to 99.5% at Grace Cottage.
- **Most Vermont Hospitals saw an increase from 2007 to 2009 in the number of visits to the ED that were not admitted.** Only Mt. Ascutney, Northeastern and Southwestern had decreases. ED visits to Rutland that did not result in hospital admission were the same in 2007 and 2009, with slightly fewer in 2008.

Figure 7
Data Source: 2007, 2008 and 2009 VT Uniform Hospital Discharge Data Sets and Table E3

Emergency Department Highlights

Emergency Department Visits in Vermont Hospitals: Top 3 CCS Diagnosis Groups by Age, 2009

Age < 5			Age 5-14			Age 15-24		
CCS Diagnosis Group	Number	Col%	CCS Diagnosis Group	Number	Col%	CCS Diagnosis Group	Number	Col%
Injury & poisoning	4,277	27.1	Injury & poisoning	9,679	47.8	Injury & poisoning	16,564	34.5
Diseases of the respiratory system	3,975	25.2	Diseases of the respiratory system	3,368	16.6	Diseases of the respiratory system	6,115	12.7
Symptoms, signs & ill-defined conditions	2,603	16.5	Symptoms, signs & ill-defined conditions	2,239	11.1	Symptoms, signs & ill-defined conditions	5,521	11.5
Other	4,939	31.3	Other	4,976	24.6	Other	19,870	41.3
All Cases	15,794	100.0	All Cases	20,262	100.0	All Cases	48,070	100.0
Age 25-44			Age 45-64			Age 65-74		
CCS Diagnosis Group	Number	Col%	CCS Diagnosis Group	Number	Col%	CCS Diagnosis Group	Number	Col%
Injury & poisoning	20,063	28.2	Injury & poisoning	15,162	26.1	Injury & poisoning	3,831	20.4
Diseases of the respiratory system	7,787	10.9	Diseases of the respiratory system	7,100	12.2	Diseases of the circulatory system	3,121	16.6
Symptoms, signs & ill-defined conditions	7,302	10.2	Diseases of the circulatory system	6,459	11.1	Diseases of the respiratory system	2,906	15.5
Other	36,099	50.7	Other	29,327	50.5	Other	8,933	47.5
All Cases	71,251	100.0	All Cases	58,048	100.0	All Cases	18,791	100.0
Age 75+			All Ages					
CCS Diagnosis Group	Number	Col%	CCS Diagnosis Group	Number	Col%			
Injury & poisoning	5,991	20.7	Injury & poisoning	75,567	28.9			
Diseases of the circulatory system	5,250	18.1	Diseases of the respiratory system	35,579	13.6			
Diseases of the respiratory system	4,328	15.0	Symptoms, signs & ill-defined conditions	26,893	10.3			
Other	13,372	46.2	Other	123,118	47.1			
All Cases	28,941	100.0	All Cases	261,157	100.0			

Figure 8

Data Source: 2009 VT Uniform Hospital Discharge Data Set and Table E4

User's Guide to the Emergency Department Tables

Emergency Department Data Collection in Vermont

Collection of Vermont (VT) hospital emergency department (ED) data began in January 2001, under the authority of the Department of Banking, Insurance, Securities and Health Care Administration (BISHCA). Like the inpatient and outpatient procedure files, the ED data are collected by the Vermont Association of Hospitals and Health Systems - Network Services Organization (VAHHS-NSO) and managed by the Vermont Department of Health (VDH).

To improve our understanding of utilization patterns in the health care system, ED data were selected as the next logical subset of outpatient data to be collected. ED usage is particularly of interest in a rural state that may have limited sites and hours available for provision of primary and urgent care in some areas. ED data also provide essential information for injury control studies since this is often the setting in which accidental and intentional injuries are evaluated and treated.

Definitions

Changes in Definition of Emergency Department Data

In data years 2001 and 2002, ED data analyses included all records coded as emergency room visits by hospitals (patient type "E") as well as inpatient records (patient type "I") that were coded as having an ED admission source. These inpatient records that originated in the ED were included in the inpatient Reports as well as in the ED tables.

Beginning with data year 2003, two changes were made to the way in which records were selected for inclusion in ED data analyses. ED data selection was expanded to include all patient type records that had an associated revenue code between 450-459 (Emergency Room). At the same time, the number of ED data records chosen for analysis was reduced since more than 12,000 patient type "E" records were found in 2003 to have no associated ER revenue charge. Many of these records

turned out to be for clinics that were held after hours in hospital EDs.

Comparison to Previous Monographs

Because of the change in record selection rules described above, the ED tables presented in this report cannot meaningfully be compared to the tables published in the 2001 and 2002 Monographs.

Sources of Data

All fourteen of Vermont's civilian acute care hospitals participate in the ED reporting system. The Veterans Administration hospital in White River Junction does not participate in ED data collection. Collection procedures are the same as those for inpatient and outpatient data, with Vermont hospitals providing data to the VAHHS-NSO EXPLOR system, the source of the data that is finally provided to VDH, the data management designee of BISHCA.

Beginning with reporting year 2001, ED data for Vermont residents using New Hampshire (NH) hospitals have been received from the New Hampshire Department of Health and Human Services. Beginning with reporting year 2005, data for Vermont residents using Massachusetts (MA) hospitals have been received from the Massachusetts Division of Health Care Finance and Policy. Starting with data year 2006, ED data for Vermont residents using New York (NY) hospitals have been received from the New York Health Department.

Clinical Classifications Software (CCS) Grouper

Clinical Classifications Software (CCS) is a tool that collapses principal diagnosis (over 12,000) and procedure (over 3,500) codes into meaningful categories. The single-level diagnosis CCS aggregates illnesses and conditions into more than 260 mutually exclusive categories. Similarly, the single-level procedure CCS aggregates

procedures into 231 mutually exclusive categories, most representing single types of procedures. High-level CCS groups further collapse single-level CCS groups into broad categories based on body systems or condition. The CCS diagnosis grouper is used in the ED tables to categorize principal diagnosis. ED visits that do not have a principal diagnosis are excluded from this report. In 2009, there were 27 such ED visits that are excluded here.

CCS was developed at the Agency for Healthcare Research and Quality (AHRQ) and is available to the public at the website: <http://www.hcup-us.ahrq.gov/toolssoftware/ccs/ccs.jsp>

Hospital vs. Hospital Service Area Data

In the tables that follow, ED data are reported by hospital and by hospital service area (HSA). Beginning with 2006 data, Emergency Department data for Vermont residents from the neighboring states of New Hampshire, New York and Massachusetts allow for the calculation of population-based analysis by HSA. Each HSA is defined by the geographically distinct population of Vermonters who are highly dependent on a hospital or group of hospitals. Each emergency department record is assigned to an HSA. This permits comparison of hospital utilization patterns for residents of the various HSAs, regardless of where they are hospitalized.

Statistics for HSA analyses include population-based rates that are adjusted for differences in population characteristics from one HSA to another, such as age distribution. Using population-based rates, especially age-adjusted rates, differences in hospitalization patterns for residents of different regions of the state can be identified.

Vermont hospitals near Vermont’s borders may provide care to people

in neighboring, non-Vermont towns. However, out-of-state residents are excluded from the population-based HSA comparisons. In order to include out-of-state residents in a hospital service area, information would need to be collected on all hospitalizations of the residents in those areas, including use of non-Vermont hospitals. In contrast to the HSA comparisons, out-of-state residents using Vermont hospitals are included in the hospital-based comparisons. See page 14 for maps of Vermont towns and HSAs.

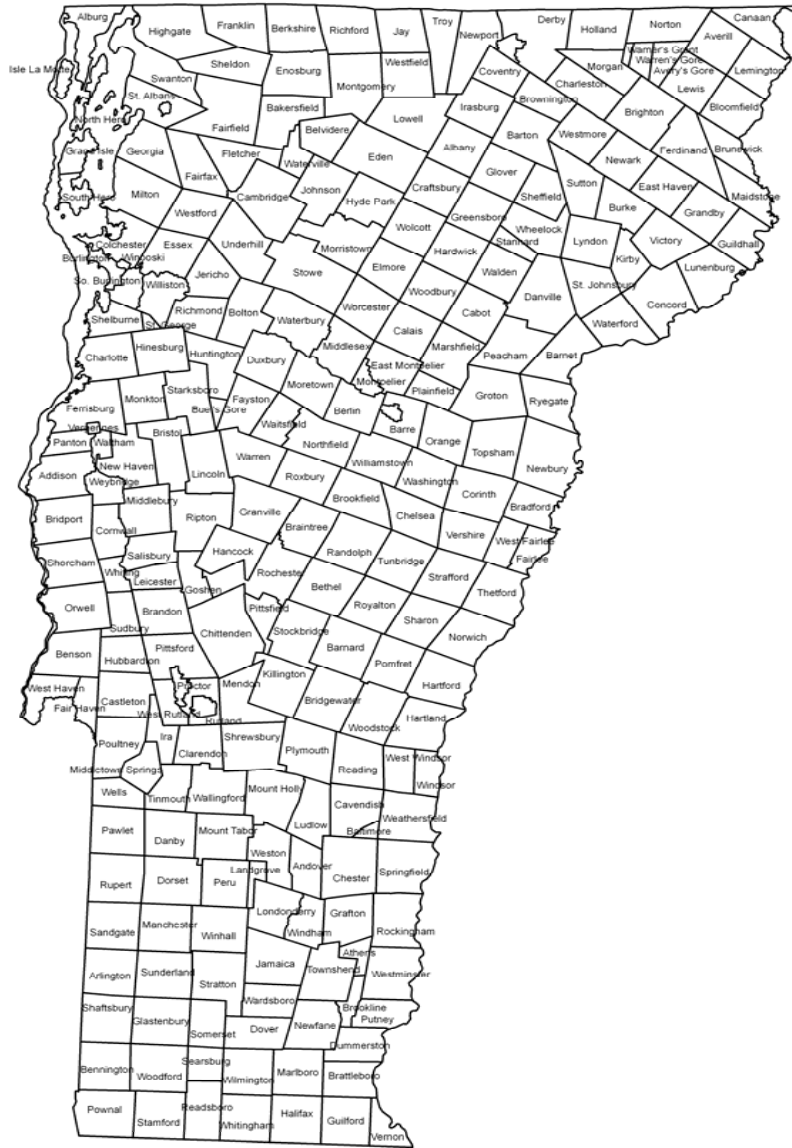
Emergency Department (ED) Reporting

ED visits are reported in several ways in the ED tables. Visits are presented in terms of Vermont or Vermont plus NH, MA and NY hospitals, admission or non-admission to the inpatient setting, and all visits versus visits by Vermont residents only.

The following table presents an overview of the number of records and how ED visits were selected in each of the 2009 ED tables and figures.

		Tables E1-E9	Tables E10	Tables E11-E12
	Total ED Visits	261,157	266,716	240,200
Hospitals	VT Hospitals	X	X	X
	NH Hospitals		X	X
	MA Hospitals		X	X
	NY Hospitals		X	X
Type of ED Visits	Not Admitted	X	X	X
	Inpatient Admission	X	X	
Type of Residents	VT Residents	X	X	X
	Non-Residents	X		

Vermont Towns



Vermont Hospital Service Areas and Hospitals

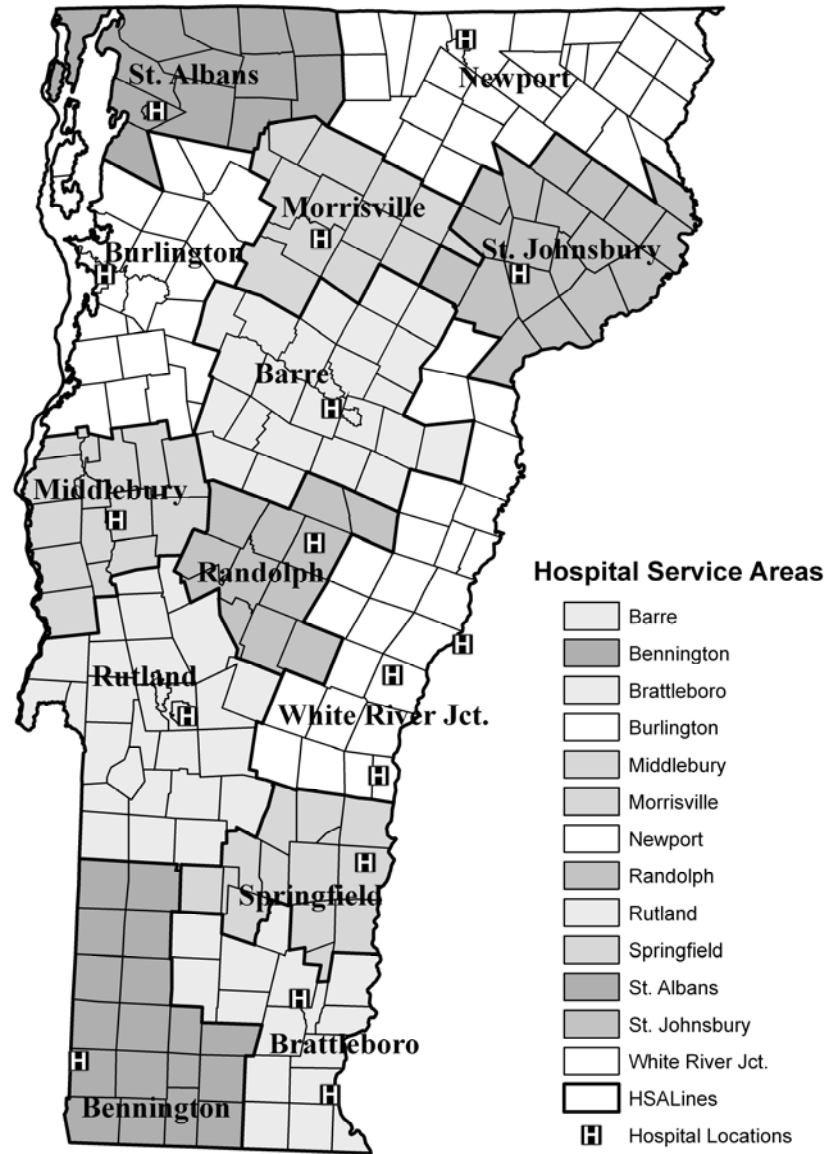


Table E1a
Clinical Classification Software (CCS) High Level Diagnosis Groups by Type of ED Visit and Data Year
2005-2009 VT Hospital Data, including VT Residents and Non-Residents
Number of Visits

Inpatient Discharges Originating in ED

CCS_GROUP	2005	2006	2007	2008	2009
Infectious & parasitic diseases	541	507	530	561	675
Neoplasms	565	586	606	542	579
Endocrine, nutritional, metabolic & immunity disorders	883	855	963	1,019	1,026
Diseases of the blood & blood-forming organs	233	225	230	299	281
Mental disorders	1,457	1,386	1,543	1,630	1,672
Diseases of the nervous system & sense organs	572	596	671	705	583
Diseases of the circulatory system	5,251	5,110	5,140	5,074	4,654
Diseases of the respiratory system	3,881	3,488	3,764	3,917	4,132
Diseases of the digestive system	3,569	3,571	3,827	3,738	3,783
Diseases of the genitourinary system	978	1,018	1,130	1,143	1,090
Contraception & complications of pregnancy & childbirth	141	123	112	157	137
Diseases of the skin & subcutaneous tissue	505	526	566	647	663
Musculoskeletal system & connective tissue	523	518	555	556	517
Congenital anomalies	39	23	33	39	41
Conditions originating in the perinatal period	0	0	0	1	1
Injury & poisoning	3,485	3,382	3,389	3,365	3,151
Symptoms, signs & ill-defined conditions	617	638	682	665	606
Residual codes, unclassified, all Ecodes	48	39	84	92	78
Total	23,288	22,591	23,825	24,150	23,669

ED Visits, Not Admitted

CCS_GROUP	2005	2006	2007	2008	2009
Infectious & parasitic diseases	3,379	3,539	3,209	3,511	3,848
Neoplasms	327	411	336	304	250
Endocrine, nutritional, metabolic & immunity disorders	2,402	2,478	2,481	2,775	2,924
Diseases of the blood & blood-forming organs	262	329	326	350	365
Mental disorders	7,953	8,702	8,546	9,036	8,657
Diseases of the nervous system & sense organs	17,837	18,692	19,176	20,161	19,964
Diseases of the circulatory system	12,970	13,414	13,344	14,366	14,206
Diseases of the respiratory system	25,038	25,380	26,572	28,086	31,447
Diseases of the digestive system	14,948	16,334	16,537	17,198	17,328
Diseases of the genitourinary system	10,079	11,166	11,093	11,818	11,650
Contraception & complications of pregnancy & childbirth	1,739	1,828	1,749	2,016	1,942
Diseases of the skin & subcutaneous tissue	5,773	6,711	7,525	8,086	7,852
Musculoskeletal system & connective tissue	14,008	16,196	17,360	16,679	16,342
Congenital anomalies	63	40	57	66	57
Conditions originating in the perinatal period	173	164	221	234	199
Injury & poisoning	76,297	75,390	75,230	77,160	72,416
Symptoms, signs & ill-defined conditions	21,959	23,712	25,312	25,919	26,287
Residual codes, unclassified, all Ecodes	1,422	1,518	1,690	1,824	1,754
Total	216,629	226,004	230,764	239,589	237,488

Table E1a
Clinical Classification Software (CCS) High Level Diagnosis Groups by Type of ED Visit and Data Year
2005-2009 VT Hospital Data, including VT Residents and Non-Residents
Number of Visits

All ED Visits, Including Those Admitted

CCS_GROUP	2005	2006	2007	2008	2009
Infectious & parasitic diseases	3,920	4,046	3,739	4,072	4,523
Neoplasms	892	997	942	846	829
Endocrine, nutritional, metabolic & immunity disorders	3,285	3,333	3,444	3,794	3,950
Diseases of the blood & blood-forming organs	495	554	556	649	646
Mental disorders	9,410	10,088	10,089	10,666	10,329
Diseases of the nervous system & sense organs	18,409	19,288	19,847	20,866	20,547
Diseases of the circulatory system	18,221	18,524	18,484	19,440	18,860
Diseases of the respiratory system	28,919	28,868	30,336	32,003	35,579
Diseases of the digestive system	18,517	19,905	20,364	20,936	21,111
Diseases of the genitourinary system	11,057	12,184	12,223	12,961	12,740
Contraception & complications of pregnancy & childbirth	1,880	1,951	1,861	2,173	2,079
Diseases of the skin & subcutaneous tissue	6,278	7,237	8,091	8,733	8,515
Musculoskeletal system & connective tissue	14,531	16,714	17,915	17,235	16,859
Congenital anomalies	102	63	90	105	98
Conditions originating in the perinatal period	173	164	221	235	200
Injury & poisoning	79,782	78,772	78,619	80,525	75,567
Symptoms, signs & ill-defined conditions	22,576	24,350	25,994	26,584	26,893
Residual codes, unclassified, all Ecodes	1,470	1,557	1,774	1,916	1,832
Total	239,917	248,595	254,589	263,739	261,157

Emergency department visits include all hospital records (outpatient and inpatient) which originated in the ED.

Inpatient discharges originating in the Emergency Department (23,669 in 2009) are reported here as well as in the hospital inpatient utilization report.

Inpatient discharges exclude newborns (MDC 15). 27 ED records with missing or invalid diagnosis codes are excluded from this analysis.

Table E1b
Clinical Classifications Software (CCS) High Level Diagnosis Groups by Type of ED Visit
2009 VT Hospital Data, including VT Residents and Non-Residents
Number of Visits and Row Percents

Diagnosis Group	ED Visits, Not Admitted		Inpatient Discharges Originating in ED		All ED Visits, Including Those Admitted	
	Number	Row %	Number	Row %	Number	Row %
Injury & poisoning	72,416	95.8	3,151	4.2	75,567	100.0
Diseases of the respiratory system	31,447	88.4	4,132	11.6	35,579	100.0
Symptoms, signs & ill-defined conditions	26,287	97.7	606	2.3	26,893	100.0
Diseases of the digestive system	17,328	82.1	3,783	17.9	21,111	100.0
Diseases of the nervous system & sense organs	19,964	97.2	583	2.8	20,547	100.0
Diseases of the circulatory system	14,206	75.3	4,654	24.7	18,860	100.0
Musculoskeletal system & connective tissue	16,342	96.9	517	3.1	16,859	100.0
Diseases of the genitourinary system	11,650	91.4	1,090	8.6	12,740	100.0
Mental disorders	8,657	83.8	1,672	16.2	10,329	100.0
Diseases of the skin & subcutaneous tissue	7,852	92.2	663	7.8	8,515	100.0
Infectious & parasitic diseases	3,848	85.1	675	14.9	4,523	100.0
Endocrine, nutritional, metabolic & immunity disorders	2,924	74.0	1,026	26.0	3,950	100.0
Contraception & complications of pregnancy & childbirth	1,942	93.4	137	6.6	2,079	100.0
Neoplasms	250	30.2	579	69.8	829	100.0
Diseases of the blood & blood-forming organs	365	56.5	281	43.5	646	100.0
Conditions originating in the perinatal period	199	99.5	1	0.5	200	100.0
Congenital anomalies	57	58.2	41	41.8	98	100.0
Residual codes, unclassified, all Ecodes	1,754	95.7	78	4.3	1,832	100.0
Total	237,488	90.9	23,669	9.1	261,157	100.0

Emergency department visits include all hospital records (outpatient and inpatient) which originated in the ED.

Inpatient discharges originating in the Emergency Department (23,669 in 2009) are reported here as well as in the hospital inpatient utilization report.

Inpatient discharges exclude newborns (MDC 15). 27 ED records with missing or invalid diagnosis codes are excluded from this analysis.

Table E2
Clinical Classifications Software (CCS) High Level and Leading Single-Level Diagnosis Groups by Type of ED Visit
2009 VT Hospital Data, including VT Residents and Non-Residents
Number of Visits and Row Percents

Diagnosis Group	ED Visits, Not Admitted		Inpatient Discharges Originating in ED		All ED Visits, Including Those Admitted	
	Number	Row %	Number	Row %	Number	Row %
Injury & poisoning	72,416	95.8	3,151	4.2	75,567	100.0
232 Sprains & strains	16,033	99.9	23	0.1	16,056	100.0
239 Superficial injury, contusion	15,853	99.7	42	0.3	15,895	100.0
236 Open wounds of extremities	9,256	99.6	33	0.4	9,289	100.0
244 Other injuries & conditions due to external causes	8,061	98.8	94	1.2	8,155	100.0
All other subgroups within this CCS category	23,213	88.7	2,959	11.3	26,172	100.0
Diseases of the respiratory system	31,447	88.4	4,132	11.6	35,579	100.0
126 Other upper respiratory infections	10,631	99.4	62	0.6	10,693	100.0
133 Other lower respiratory disease	5,202	97.9	113	2.1	5,315	100.0
122 Pneumonia (except TB or STD related)	2,817	61.3	1,781	38.7	4,598	100.0
127 Chronic obstructive pulmonary disease & bronchiectasis	3,356	77.7	962	22.3	4,318	100.0
All other subgroups within this CCS category	9,441	88.6	1,214	11.4	10,655	100.0
Symptoms, signs & ill-defined conditions	26,287	97.7	606	2.3	26,893	100.0
251 Abdominal pain	11,040	98.4	177	1.6	11,217	100.0
250 Nausea & vomiting	3,802	98.6	53	1.4	3,855	100.0
253 Allergic reactions	2,693	99.4	16	0.6	2,709	100.0
All other subgroups within this CCS category	8,752	96.0	360	4.0	9,112	100.0
Diseases of the digestive system	17,328	82.1	3,783	17.9	21,111	100.0
136 Disorders of teeth & jaw	6,695	99.8	12	0.2	6,707	100.0
155 Other gastrointestinal disorders	2,469	94.3	149	5.7	2,618	100.0
154 Noninfectious gastroenteritis	2,064	94.5	120	5.5	2,184	100.0
All other subgroups within this CCS category	6,100	63.5	3,502	36.5	9,602	100.0
Diseases of the nervous system & sense organs	19,964	97.2	583	2.8	20,547	100.0
84 Headache, including migraine	5,411	99.3	39	0.7	5,450	100.0
92 Otitis media & related conditions	3,394	99.9	4	0.1	3,398	100.0
95 Other nervous system disorders	2,653	94.3	160	5.7	2,813	100.0
93 Conditions associated with dizziness or vertigo	2,393	98.1	46	1.9	2,439	100.0
All other subgroups within this CCS category	6,113	94.8	334	5.2	6,447	100.0

Table E2
Clinical Classifications Software (CCS) High Level and Leading Single-Level Diagnosis Groups by Type of ED Visit
2009 VT Hospital Data, including VT Residents and Non-Residents
Number of Visits and Row Percents

Diagnosis Group	ED Visits, Not Admitted		Inpatient Discharges Originating in ED		All ED Visits, Including Those Admitted	
	Number	Row %	Number	Row %	Number	Row %
Diseases of the circulatory system	14,206	75.3	4,654	24.7	18,860	100.0
102 Nonspecific chest pain	7,054	94.6	401	5.4	7,455	100.0
106 Cardiac dysrhythmias	2,406	74.7	816	25.3	3,222	100.0
All other subgroups within this CCS category	4,746	58.0	3,437	42.0	8,183	100.0
Musculoskeletal system & connective tissue	16,342	96.9	517	3.1	16,859	100.0
205 Spondylosis, disc disorders, other back problems	7,327	98.0	150	2.0	7,477	100.0
211 Other connective tissue disease	4,461	96.7	154	3.3	4,615	100.0
204 Other non-traumatic joint disorders	3,826	99.2	32	0.8	3,858	100.0
All other subgroups within this CCS category	728	80.1	181	19.9	909	100.0
Diseases of the genitourinary system	11,650	91.4	1,090	8.6	12,740	100.0
159 Urinary tract infections	4,464	90.0	496	10.0	4,960	100.0
160 Calculus of urinary tract	2,236	94.1	140	5.9	2,376	100.0
163 Genitourinary symptoms & ill-defined conditions	1,523	97.8	35	2.2	1,558	100.0
All other subgroups within this CCS category	3,427	89.1	419	10.9	3,846	100.0
Mental disorders	8,657	83.8	1,672	16.2	10,329	100.0
657 MHSA: Mood disorders	2,036	75.2	673	24.8	2,709	100.0
660 MHSA: Alcohol related disorders	1,810	83.4	361	16.6	2,171	100.0
651 MHSA: Anxiety disorders	1,982	96.9	64	3.1	2,046	100.0
All other subgroups within this CCS category	2,829	83.1	574	16.9	3,403	100.0
Diseases of the skin & subcutaneous tissue	7,852	92.2	663	7.8	8,515	100.0
197 Skin & subcutaneous tissue infections	5,626	90.0	623	10.0	6,249	100.0
200 Other skin disorders	1,839	99.7	5	0.3	1,844	100.0
All other subgroups within this CCS category	387	91.7	35	8.3	422	100.0
Infectious & parasitic diseases	3,848	85.1	675	14.9	4,523	100.0
7 Viral infection	2,800	97.8	64	2.2	2,864	100.0
2 Septicemia (except in labor)	67	11.1	536	88.9	603	100.0
All other subgroups within this CCS category	981	92.9	75	7.1	1,056	100.0
Endocrine, nutritional, metabolic & immunity disorders	2,924	74.0	1,026	26.0	3,950	100.0
55 Fluid & electrolyte disorders	1,363	76.3	424	23.7	1,787	100.0
50 Diabetes mellitus with complications	620	61.4	389	38.6	1,009	100.0
All other subgroups within this CCS category	941	81.5	213	18.5	1,154	100.0

Table E2
Clinical Classifications Software (CCS) High Level and Leading Single-Level Diagnosis Groups by Type of ED Visit
2009 VT Hospital Data, including VT Residents and Non-Residents
Number of Visits and Row Percents

Diagnosis Group	ED Visits, Not Admitted		Inpatient Discharges Originating in ED		All ED Visits, Including Those Admitted	
	Number	Row %	Number	Row %	Number	Row %
Contraception & complications of pregnancy & childbirth	1,942	93.4	137	6.6	2,079	100.0
181 Other complications of pregnancy	1,190	95.9	51	4.1	1,241	100.0
182 Hemorrhage in pregnancy, abruptio placenta, placenta previa	322	97.9	7	2.1	329	100.0
All other subgroups within this CCS category	430	84.5	79	15.5	509	100.0
Neoplasms	250	30.2	579	69.8	829	100.0
19 Cancer of bronchus, lung	36	23.8	115	76.2	151	100.0
42 Secondary malignancies	18	11.9	133	88.1	151	100.0
All other subgroups within this CCS category	196	37.2	331	62.8	527	100.0
Diseases of the blood & blood-forming organs	365	56.5	281	43.5	646	100.0
59 Deficiency & other anemia	217	62.0	133	38.0	350	100.0
63 Diseases of white blood cells	47	34.3	90	65.7	137	100.0
62 Coagulation & hemorrhagic disorders	83	79.8	21	20.2	104	100.0
All other subgroups within this CCS category	18	32.7	37	67.3	55	100.0
Conditions originating in the perinatal period	199	99.5	1	0.5	200	100.0
224 Other perinatal conditions	185	99.5	1	0.5	186	100.0
All other subgroups within this CCS category	14	100.0	0	0.0	14	100.0
Congenital anomalies	57	58.2	41	41.8	98	100.0
Residual codes, unclassified, all Ecodes	1,754	95.7	78	4.3	1,832	100.0
259 Residual codes, unclassified	1,752	95.7	78	4.3	1,830	100.0
All other subgroups within this CCS category	2	100.0	0	0.0	2	100.0
Total	237,488	90.9	23,669	9.1	261,157	100.0

Emergency department visits include all hospital records (outpatient and inpatient) which originated in the ED.

Inpatient discharges originating in the Emergency Department (23,669 in 2009) are reported here as well as in the hospital inpatient utilization report.

Inpatient discharges exclude newborns (MDC 15). 27 ED records with missing or invalid diagnosis codes are excluded from this analysis.

Table E3
Vermont Hospitals by Type of ED Visit
2009 VT Hospital Data, including VT Residents and Non-Residents
Number of Visits and Row Percents

Vermont Hospital	ED Visits, Not Admitted		Inpatient Discharges Originating in ED		All ED Visits, Including Those Admitted	
	Number	Row %	Number	Row %	Number	Row %
Brattleboro Memorial Hospital	11,430	92.1	977	7.9	12,407	100.0
Central Vermont Medical Center	27,564	92.4	2,280	7.6	29,844	100.0
Copley Hospital	12,121	98.4	194	1.6	12,315	100.0
Fletcher Allen Health Care	48,936	85.0	8,652	15.0	57,588	100.0
Gifford Medical Center	6,807	90.8	686	9.2	7,493	100.0
Grace Cottage Hospital	2,786	99.5	15	0.5	2,801	100.0
Mt. Ascutney Hospital and Health Center	4,996	98.8	59	1.2	5,055	100.0
North Country Hospital	13,740	98.2	256	1.8	13,996	100.0
Northeastern Vermont Regional Hospital	9,713	96.3	375	3.7	10,088	100.0
Northwestern Medical Center	26,270	96.3	1,009	3.7	27,279	100.0
Porter Medical Center	13,344	97.8	304	2.2	13,648	100.0
Rutland Regional Medical Center	29,585	86.9	4,457	13.1	34,042	100.0
Southwestern Vermont Medical Center	15,404	83.9	2,958	16.1	18,362	100.0
Springfield Hospital	14,792	91.1	1,447	8.9	16,239	100.0
Total	237,488	90.9	23,669	9.1	261,157	100.0

Emergency department visits include all hospital records (outpatient and inpatient) which originated in the ED.

Inpatient discharges originating in the Emergency Department (23,669 in 2009) are reported here as well as in the hospital inpatient utilization report.

Inpatient discharges exclude newborns (MDC 15). 27 ED records with missing or invalid diagnosis codes are excluded from this analysis.

Table E4
Clinical Classifications Software (CCS) High Level Diagnosis Groups by Age
2009 VT Hospital ED Visits, including VT Residents and Non-Residents
Number of Visits and Row Percents

Diagnosis Group	Age Group							Total
	Under 5	5-14	15-24	25-44	45-64	65-74	75+	
Injury & poisoning								
Visits	4,277	9,679	16,564	20,063	15,162	3,831	5,991	75,567
Row %	5.7	12.8	21.9	26.5	20.1	5.1	7.9	100.0
Diseases of the respiratory system								
Visits	3,975	3,368	6,115	7,787	7,100	2,906	4,328	35,579
Row %	11.2	9.5	17.2	21.9	20.0	8.2	12.2	100.0
Symptoms, signs & ill-defined conditions								
Visits	2,603	2,239	5,521	7,302	5,143	1,592	2,493	26,893
Row %	9.7	8.3	20.5	27.2	19.1	5.9	9.3	100.0
Diseases of the digestive system								
Visits	819	688	3,837	7,152	4,749	1,565	2,301	21,111
Row %	3.9	3.3	18.2	33.9	22.5	7.4	10.9	100.0
Diseases of the nervous system & sense organs								
Visits	2,137	1,682	3,330	6,340	4,479	1,138	1,441	20,547
Row %	10.4	8.2	16.2	30.9	21.8	5.5	7.0	100.0
Diseases of the circulatory system								
Visits	19	122	812	3,077	6,459	3,121	5,250	18,860
Row %	0.1	0.6	4.3	16.3	34.2	16.5	27.8	100.0
Musculoskeletal system & connective tissue								
Visits	155	583	2,332	6,050	4,726	1,241	1,772	16,859
Row %	0.9	3.5	13.8	35.9	28.0	7.4	10.5	100.0
Diseases of the genitourinary system								
Visits	200	404	2,985	3,704	2,585	978	1,884	12,740
Row %	1.6	3.2	23.4	29.1	20.3	7.7	14.8	100.0
Mental disorders								
Visits	13	354	2,446	3,953	2,683	377	503	10,329
Row %	0.1	3.4	23.7	38.3	26.0	3.6	4.9	100.0
Diseases of the skin & subcutaneous tissue								
Visits	462	465	1,494	2,625	2,137	616	716	8,515
Row %	5.4	5.5	17.5	30.8	25.1	7.2	8.4	100.0
Infectious & parasitic diseases								
Visits	633	493	1,028	924	762	297	386	4,523
Row %	14.0	10.9	22.7	20.4	16.8	6.6	8.5	100.0

Table E4
Clinical Classifications Software (CCS) High Level Diagnosis Groups by Age
2009 VT Hospital ED Visits, including VT Residents and Non-Residents
Number of Visits and Row Percents

Diagnosis Group	Age Group						75+	Total
	Under 5	5-14	15-24	25-44	45-64	65-74		
Endocrine, nutritional, metabolic & immunity disorders								
Visits	173	113	374	670	1,099	571	950	3,950
Row %	4.4	2.9	9.5	17.0	27.8	14.5	24.1	100.0
Contraception & complications of pregnancy & childbirth								
Visits	1	1	1,009	1,064	4	0	0	2,079
Row %	0.0	0.0	48.5	51.2	0.2	0.0	0.0	100.0
Neoplasms								
Visits	9	6	12	69	300	189	244	829
Row %	1.1	0.7	1.4	8.3	36.2	22.8	29.4	100.0
Diseases of the blood & blood-forming organs								
Visits	22	14	21	66	158	140	225	646
Row %	3.4	2.2	3.3	10.2	24.5	21.7	34.8	100.0
Conditions originating in the perinatal period								
Visits	198	0	1	0	1	0	0	200
Row %	99.0	0.0	0.5	0.0	0.5	0.0	0.0	100.0
Congenital anomalies								
Visits	37	5	5	26	10	4	11	98
Row %	37.8	5.1	5.1	26.5	10.2	4.1	11.2	100.0
Residual codes, unclassified, all Ecodes								
Visits	61	46	184	379	491	225	446	1,832
Row %	3.3	2.5	10.0	20.7	26.8	12.3	24.3	100.0
Total								
Visits	15,794	20,262	48,070	71,251	58,048	18,791	28,941	261,157
Row %	6.0	7.8	18.4	27.3	22.2	7.2	11.1	100.0

Emergency department visits include all hospital records (outpatient and inpatient) which originated in the ED.

Inpatient discharges originating in the Emergency Department (23,669 in 2009) are reported here as well as in the hospital inpatient utilization report.

Inpatient discharges exclude newborns (MDC 15). 27 ED records with missing or invalid diagnosis codes are excluded from this analysis.

Table E4
Clinical Classifications Software (CCS) High Level Diagnosis Groups by Age
2009 VT Hospital ED Visits, including VT Residents and Non-Residents
Number of Visits and Column Percents

Diagnosis Group	Age Group							Total
	Under 5	5-14	15-24	25-44	45-64	65-74	75+	
Injury & poisoning								
Visits	4,277	9,679	16,564	20,063	15,162	3,831	5,991	75,567
Col %	27.1	47.8	34.5	28.2	26.1	20.4	20.7	28.9
Diseases of the respiratory system								
Visits	3,975	3,368	6,115	7,787	7,100	2,906	4,328	35,579
Col %	25.2	16.6	12.7	10.9	12.2	15.5	15.0	13.6
Symptoms, signs & ill-defined conditions								
Visits	2,603	2,239	5,521	7,302	5,143	1,592	2,493	26,893
Col %	16.5	11.1	11.5	10.2	8.9	8.5	8.6	10.3
Diseases of the digestive system								
Visits	819	688	3,837	7,152	4,749	1,565	2,301	21,111
Col %	5.2	3.4	8.0	10.0	8.2	8.3	8.0	8.1
Diseases of the nervous system & sense organs								
Visits	2,137	1,682	3,330	6,340	4,479	1,138	1,441	20,547
Col %	13.5	8.3	6.9	8.9	7.7	6.1	5.0	7.9
Diseases of the circulatory system								
Visits	19	122	812	3,077	6,459	3,121	5,250	18,860
Col %	0.1	0.6	1.7	4.3	11.1	16.6	18.1	7.2
Musculoskeletal system & connective tissue								
Visits	155	583	2,332	6,050	4,726	1,241	1,772	16,859
Col %	1.0	2.9	4.9	8.5	8.1	6.6	6.1	6.5
Diseases of the genitourinary system								
Visits	200	404	2,985	3,704	2,585	978	1,884	12,740
Col %	1.3	2.0	6.2	5.2	4.5	5.2	6.5	4.9
Mental disorders								
Visits	13	354	2,446	3,953	2,683	377	503	10,329
Col %	0.1	1.7	5.1	5.5	4.6	2.0	1.7	4.0
Diseases of the skin & subcutaneous tissue								
Visits	462	465	1,494	2,625	2,137	616	716	8,515
Col %	2.9	2.3	3.1	3.7	3.7	3.3	2.5	3.3
Infectious & parasitic diseases								
Visits	633	493	1,028	924	762	297	386	4,523
Col %	4.0	2.4	2.1	1.3	1.3	1.6	1.3	1.7

Table E4
Clinical Classifications Software (CCS) High Level Diagnosis Groups by Age
2009 VT Hospital ED Visits, including VT Residents and Non-Residents
Number of Visits and Column Percents

Diagnosis Group	Age Group						75+	Total
	Under 5	5-14	15-24	25-44	45-64	65-74		
Endocrine, nutritional, metabolic & immunity disorders								
Visits	173	113	374	670	1,099	571	950	3,950
Col %	1.1	0.6	0.8	0.9	1.9	3.0	3.3	1.5
Contraception & complications of pregnancy & childbirth								
Visits	1	1	1,009	1,064	4	0	0	2,079
Col %	0.0	0.0	2.1	1.5	0.0	0.0	0.0	0.8
Neoplasms								
Visits	9	6	12	69	300	189	244	829
Col %	0.1	0.0	0.0	0.1	0.5	1.0	0.8	0.3
Diseases of the blood & blood-forming organs								
Visits	22	14	21	66	158	140	225	646
Col %	0.1	0.1	0.0	0.1	0.3	0.7	0.8	0.2
Conditions originating in the perinatal period								
Visits	198	0	1	0	1	0	0	200
Col %	1.3	0.0	0.0	0.0	0.0	0.0	0.0	0.1
Congenital anomalies								
Visits	37	5	5	26	10	4	11	98
Col %	0.2	0.0	0.0	0.0	0.0	0.0	0.0	0.0
Residual codes, unclassified, all Ecodes								
Visits	61	46	184	379	491	225	446	1,832
Col %	0.4	0.2	0.4	0.5	0.8	1.2	1.5	0.7
Total								
Visits	15,794	20,262	48,070	71,251	58,048	18,791	28,941	261,157
Col %	100.0	100.0	100.0	100.0	100.0	100.0	100.0	100.0

Emergency department visits include all hospital records (outpatient and inpatient) which originated in the ED.

Inpatient discharges originating in the Emergency Department (23,669 in 2009) are reported here as well as in the hospital inpatient utilization report.

Inpatient discharges exclude newborns (MDC 15). 27 ED records with missing or invalid diagnosis codes are excluded from this analysis.

Table E5
Clinical Classifications Software (CCS) High Level Diagnosis Groups by Sex and Age
2009 VT Hospital ED Visits, including VT Residents and Non-Residents
Number of Visits and Row Percents

Diagnosis Group	Males					Females					Total for Both Sexes
	Under 15	15-44	45-64	65+	Total	Under 15	15-44	45-64	65+	Total	
Injury & poisoning											
Visits	8,010	20,910	7,857	3,931	40,708	5,946	15,715	7,305	5,891	34,857	75,565
Row %	10.6	27.7	10.4	5.2	53.9	7.9	20.8	9.7	7.8	46.1	100.0
Diseases of the respiratory system											
Visits	4,015	5,479	3,087	3,457	16,038	3,328	8,423	4,013	3,777	19,541	35,579
Row %	11.3	15.4	8.7	9.7	45.1	9.4	23.7	11.3	10.6	54.9	100.0
Symptoms, signs & ill-defined conditions											
Visits	2,469	4,466	2,133	1,705	10,773	2,373	8,356	3,010	2,380	16,119	26,892
Row %	9.2	16.6	7.9	6.3	40.1	8.8	31.1	11.2	8.9	59.9	100.0
Diseases of the digestive system											
Visits	819	5,203	2,318	1,665	10,005	688	5,786	2,431	2,201	11,106	21,111
Row %	3.9	24.6	11.0	7.9	47.4	3.3	27.4	11.5	10.4	52.6	100.0
Diseases of the nervous system & sense organs											
Visits	1,978	3,634	1,840	1,060	8,512	1,841	6,036	2,639	1,519	12,035	20,547
Row %	9.6	17.7	9.0	5.2	41.4	9.0	29.4	12.8	7.4	58.6	100.0
Diseases of the circulatory system											
Visits	77	2,027	3,440	3,781	9,325	64	1,862	3,019	4,590	9,535	18,860
Row %	0.4	10.7	18.2	20.0	49.4	0.3	9.9	16.0	24.3	50.6	100.0
Musculoskeletal system & connective tissue											
Visits	371	3,934	2,290	1,068	7,663	367	4,448	2,436	1,945	9,196	16,859
Row %	2.2	23.3	13.6	6.3	45.5	2.2	26.4	14.4	11.5	54.5	100.0
Diseases of the genitourinary system											
Visits	234	1,466	1,173	1,450	4,323	370	5,223	1,412	1,412	8,417	12,740
Row %	1.8	11.5	9.2	11.4	33.9	2.9	41.0	11.1	11.1	66.1	100.0
Mental disorders											
Visits	199	3,098	1,432	348	5,077	168	3,301	1,251	532	5,252	10,329
Row %	1.9	30.0	13.9	3.4	49.2	1.6	32.0	12.1	5.2	50.8	100.0
Diseases of the skin & subcutaneous tissue											
Visits	496	2,195	1,234	663	4,588	431	1,924	902	669	3,926	8,514
Row %	5.8	25.8	14.5	7.8	53.9	5.1	22.6	10.6	7.9	46.1	100.0

Table E5
Clinical Classifications Software (CCS) High Level Diagnosis Groups by Sex and Age
2009 VT Hospital ED Visits, including VT Residents and Non-Residents
Number of Visits and Row Percents

Diagnosis Group	Males					Females					Total for Both Sexes
	Under 15	15-44	45-64	65+	Total	Under 15	15-44	45-64	65+	Total	
Infectious & parasitic diseases											
Visits	590	809	333	324	2,056	536	1,143	429	359	2,467	4,523
Row %	13.0	17.9	7.4	7.2	45.5	11.9	25.3	9.5	7.9	54.5	100.0
Endocrine, nutritional, metabolic & immunity disorders											
Visits	147	481	635	646	1,909	139	563	464	875	2,041	3,950
Row %	3.7	12.2	16.1	16.4	48.3	3.5	14.3	11.7	22.2	51.7	100.0
Contraception & complications of pregnancy & childbirth											
Visits	0	0	0	0	0	2	2,073	4	0	2,079	2,079
Row %	0.0	0.0	0.0	0.0	0.0	0.1	99.7	0.2	0.0	100.0	100.0
Neoplasms											
Visits	5	35	152	201	393	10	46	148	232	436	829
Row %	0.6	4.2	18.3	24.2	47.4	1.2	5.5	17.9	28.0	52.6	100.0
Diseases of the blood & blood-forming organs											
Visits	20	41	69	142	272	16	46	89	223	374	646
Row %	3.1	6.3	10.7	22.0	42.1	2.5	7.1	13.8	34.5	57.9	100.0
Conditions originating in the perinatal period											
Visits	104	0	0	0	104	94	1	1	0	96	200
Row %	52.0	0.0	0.0	0.0	52.0	47.0	0.5	0.5	0.0	48.0	100.0
Congenital anomalies											
Visits	25	17	8	4	54	17	14	2	11	44	98
Row %	25.5	17.3	8.2	4.1	55.1	17.3	14.3	2.0	11.2	44.9	100.0
Residual codes, unclassified, all Ecodes											
Visits	67	263	231	306	867	40	300	260	365	965	1,832
Row %	3.7	14.4	12.6	16.7	47.3	2.2	16.4	14.2	19.9	52.7	100.0
Total											
Visits	19,626	54,058	28,232	20,751	122,667	16,430	65,260	29,815	26,981	138,486	261,153
Row %	7.5	20.7	10.8	7.9	47.0	6.3	25.0	11.4	10.3	53.0	100.0

Four records with missing value for sex were excluded from the above totals.

Emergency department visits include all hospital records (outpatient and inpatient) which originated in the ED.

Inpatient discharges originating in the Emergency Department (23,669 in 2009) are reported here as well as in the hospital inpatient utilization report.

Inpatient discharges exclude newborns (MDC 15). 27 ED records with missing or invalid diagnosis codes are excluded from this analysis.

Table E5
Clinical Classifications Software (CCS) High Level Diagnosis Groups by Sex and Age
2009 VT Hospital ED Visits, including VT Residents and Non-Residents
Number of Visits and Column Percents

Diagnosis Group	Males					Females					Total for Both Sexes
	Under 15	15-44	45-64	65+	Total	Under 15	15-44	45-64	65+	Total	
Injury & poisoning											
Visits	8,010	20,910	7,857	3,931	40,708	5,946	15,715	7,305	5,891	34,857	75,565
Row %	40.8	38.7	27.8	18.9	33.2	36.2	24.1	24.5	21.8	25.2	28.9
Diseases of the respiratory system											
Visits	4,015	5,479	3,087	3,457	16,038	3,328	8,423	4,013	3,777	19,541	35,579
Row %	20.5	10.1	10.9	16.7	13.1	20.3	12.9	13.5	14.0	14.1	13.6
Symptoms, signs & ill-defined conditions											
Visits	2,469	4,466	2,133	1,705	10,773	2,373	8,356	3,010	2,380	16,119	26,892
Row %	12.6	8.3	7.6	8.2	8.8	14.4	12.8	10.1	8.8	11.6	10.3
Diseases of the digestive system											
Visits	819	5,203	2,318	1,665	10,005	688	5,786	2,431	2,201	11,106	21,111
Row %	4.2	9.6	8.2	8.0	8.2	4.2	8.9	8.2	8.2	8.0	8.1
Diseases of the nervous system & sense organs											
Visits	1,978	3,634	1,840	1,060	8,512	1,841	6,036	2,639	1,519	12,035	20,547
Row %	10.1	6.7	6.5	5.1	6.9	11.2	9.2	8.9	5.6	8.7	7.9
Diseases of the circulatory system											
Visits	77	2,027	3,440	3,781	9,325	64	1,862	3,019	4,590	9,535	18,860
Row %	0.4	3.7	12.2	18.2	7.6	0.4	2.9	10.1	17.0	6.9	7.2
Musculoskeletal system & connective tissue											
Visits	371	3,934	2,290	1,068	7,663	367	4,448	2,436	1,945	9,196	16,859
Row %	1.9	7.3	8.1	5.1	6.2	2.2	6.8	8.2	7.2	6.6	6.5
Diseases of the genitourinary system											
Visits	234	1,466	1,173	1,450	4,323	370	5,223	1,412	1,412	8,417	12,740
Row %	1.2	2.7	4.2	7.0	3.5	2.3	8.0	4.7	5.2	6.1	4.9
Mental disorders											
Visits	199	3,098	1,432	348	5,077	168	3,301	1,251	532	5,252	10,329
Row %	1.0	5.7	5.1	1.7	4.1	1.0	5.1	4.2	2.0	3.8	4.0
Diseases of the skin & subcutaneous tissue											
Visits	496	2,195	1,234	663	4,588	431	1,924	902	669	3,926	8,514
Row %	2.5	4.1	4.4	3.2	3.7	2.6	2.9	3.0	2.5	2.8	3.3

Table E5
Clinical Classifications Software (CCS) High Level Diagnosis Groups by Sex and Age
2009 VT Hospital ED Visits, including VT Residents and Non-Residents
Number of Visits and Column Percents

Diagnosis Group	Males					Females					Total for Both Sexes
	Under 15	15-44	45-64	65+	Total	Under 15	15-44	45-64	65+	Total	
Infectious & parasitic diseases											
Visits	590	809	333	324	2,056	536	1,143	429	359	2,467	4,523
Row %	3.0	1.5	1.2	1.6	1.7	3.3	1.8	1.4	1.3	1.8	1.7
Endocrine, nutritional, metabolic & immunity disorders											
Visits	147	481	635	646	1,909	139	563	464	875	2,041	3,950
Row %	0.7	0.9	2.2	3.1	1.6	0.8	0.9	1.6	3.2	1.5	1.5
Contraception & complications of pregnancy & childbirth											
Visits	0	0	0	0	0	2	2,073	4	0	2,079	2,079
Row %	0.0	0.0	0.0	0.0	0.0	0.0	3.2	0.0	0.0	1.5	0.8
Neoplasms											
Visits	5	35	152	201	393	10	46	148	232	436	829
Row %	0.0	0.1	0.5	1.0	0.3	0.1	0.1	0.5	0.9	0.3	0.3
Diseases of the blood & blood-forming organs											
Visits	20	41	69	142	272	16	46	89	223	374	646
Row %	0.1	0.1	0.2	0.7	0.2	0.1	0.1	0.3	0.8	0.3	0.2
Conditions originating in the perinatal period											
Visits	104	0	0	0	104	94	1	1	0	96	200
Row %	0.5	0.0	0.0	0.0	0.1	0.6	0.0	0.0	0.0	0.1	0.1
Congenital anomalies											
Visits	25	17	8	4	54	17	14	2	11	44	98
Row %	0.1	0.0	0.0	0.0	0.0	0.1	0.0	0.0	0.0	0.0	0.0
Residual codes, unclassified, all Ecodes											
Visits	67	263	231	306	867	40	300	260	365	965	1,832
Row %	0.3	0.5	0.8	1.5	0.7	0.2	0.5	0.9	1.4	0.7	0.7
Total											
Visits	19,626	54,058	28,232	20,751	122,667	16,430	65,260	29,815	26,981	138,486	261,153
Row %	100.0	100.0	100.0	100.0	100.0	100.0	100.0	100.0	100.0	100.0	100.0

Four records with missing value for sex were excluded from the above totals.

Emergency department visits include all hospital records (outpatient and inpatient) which originated in the ED.

Inpatient discharges originating in the Emergency Department (23,669 in 2009) are reported here as well as in the hospital inpatient utilization report.

Inpatient discharges exclude newborns (MDC 15). 27 ED records with missing or invalid diagnosis codes are excluded from this analysis.

Table E6
Clinical Classifications Software (CCS) High Level Diagnosis Groups by Primary Payer
2009 VT Hospital ED Visits, including VT Residents and Non-Residents
Number of Visits and Row Percents

Diagnosis Group	Medicare	Medicaid	Other Govt	Workers Comp.	Private Insurance	Other	Unknown	Total
Injury & poisoning								
Visits	12,189	19,842	808	4,408	29,387	8,915	18	75,567
Row %	16.1	26.3	1.1	5.8	38.9	11.8	0.0	100.0
Diseases of the respiratory system								
Visits	9,294	11,602	315	46	10,816	3,496	10	35,579
Row %	26.1	32.6	0.9	0.1	30.4	9.8	0.0	100.0
Symptoms, signs & ill-defined conditions								
Visits	5,531	9,019	279	155	9,055	2,853	1	26,893
Row %	20.6	33.5	1.0	0.6	33.7	10.6	0.0	100.0
Diseases of the digestive system								
Visits	5,090	6,827	164	33	5,936	3,058	3	21,111
Row %	24.1	32.3	0.8	0.2	28.1	14.5	0.0	100.0
Diseases of the nervous system & sense organs								
Visits	3,906	7,394	230	169	6,897	1,949	2	20,547
Row %	19.0	36.0	1.1	0.8	33.6	9.5	0.0	100.0
Diseases of the circulatory system								
Visits	9,146	2,266	175	33	6,018	1,221	1	18,860
Row %	48.5	12.0	0.9	0.2	31.9	6.5	0.0	100.0
Musculoskeletal system & connective tissue								
Visits	4,334	4,974	144	506	4,883	2,015	3	16,859
Row %	25.7	29.5	0.9	3.0	29.0	12.0	0.0	100.0
Diseases of the genitourinary system								
Visits	3,390	3,545	118	20	4,335	1,327	5	12,740
Row %	26.6	27.8	0.9	0.2	34.0	10.4	0.0	100.0
Mental disorders								
Visits	2,404	3,968	114	16	2,454	1,373	0	10,329
Row %	23.3	38.4	1.1	0.2	23.8	13.3	0.0	100.0
Diseases of the skin & subcutaneous tissue								
Visits	1,922	2,560	84	77	2,664	1,208	0	8,515
Row %	22.6	30.1	1.0	0.9	31.3	14.2	0.0	100.0

Table E6
Clinical Classifications Software (CCS) High Level Diagnosis Groups by Primary Payer
2009 VT Hospital ED Visits, including VT Residents and Non-Residents
Number of Visits and Row Percents

Diagnosis Group	Medicare	Medicaid	Other Govt	Workers Comp.	Private Insurance	Other	Unknown	Total
Infectious & parasitic diseases								
Visits	862	1,606	39	42	1,459	512	3	4,523
Row %	19.1	35.5	0.9	0.9	32.3	11.3	0.1	100.0
Endocrine, nutritional, metabolic & immunity disorders								
Visits	1,837	857	40	4	965	247	0	3,950
Row %	46.5	21.7	1.0	0.1	24.4	6.3	0.0	100.0
Contraception & complications of pregnancy & childbirth								
Visits	31	1,163	33	3	633	216	0	2,079
Row %	1.5	55.9	1.6	0.1	30.4	10.4	0.0	100.0
Neoplasms								
Visits	451	107	6	1	232	32	0	829
Row %	54.4	12.9	0.7	0.1	28.0	3.9	0.0	100.0
Diseases of the blood & blood-forming organs								
Visits	382	89	4	0	154	17	0	646
Row %	59.1	13.8	0.6	0.0	23.8	2.6	0.0	100.0
Conditions originating in the perinatal period								
Visits	0	125	1	0	45	29	0	200
Row %	0.0	62.5	0.5	0.0	22.5	14.5	0.0	100.0
Congenital anomalies								
Visits	23	39	1	0	29	6	0	98
Row %	23.5	39.8	1.0	0.0	29.6	6.1	0.0	100.0
Residual codes, unclassified, all Ecodes								
Visits	803	341	19	65	452	151	1	1,832
Row %	43.8	18.6	1.0	3.5	24.7	8.2	0.1	100.0
Total								
Visits	61,595	76,324	2,574	5,578	86,414	28,625	47	261,157
Row %	23.6	29.2	1.0	2.1	33.1	11.0	0.0	100.0

"Other" payer includes self-pay, no charge, and other sources of payment

Emergency department visits include all hospital records (outpatient and inpatient) which originated in the ED.

Inpatient discharges originating in the Emergency Department (23,669 in 2009) are reported here as well as in the hospital inpatient utilization report.

Inpatient discharges exclude newborns (MDC 15). 27 ED records with missing or invalid diagnosis codes are excluded from this analysis.

Table E7
Primary Payer by Age
2009 VT Hospital ED Visits, including VT Residents and Non-Residents
Number of Visits and Column Percents

Primary Payer	Age Group							Total
	Under 5	5-14	15-24	25-44	45-64	65-74	75+	
Medicare								
Visits	0	4	604	6,655	10,842	15,982	27,508	61,595
Column %	0.0	0.0	1.3	9.3	18.7	85.1	95.0	23.6
Medicaid								
Visits	10,423	10,601	19,031	25,287	10,813	107	62	76,324
Column %	66.0	52.3	39.6	35.5	18.6	0.6	0.2	29.2
Other Gov't								
Visits	176	228	640	710	694	53	73	2,574
Column %	1.1	1.1	1.3	1.0	1.2	0.3	0.3	1.0
Work. Comp.								
Visits	0	2	1,053	2,535	1,839	128	21	5,578
Column %	0.0	0.0	2.2	3.6	3.2	0.7	0.1	2.1
Private Ins.								
Visits	4,127	8,336	18,514	23,596	28,502	2,262	1,077	86,414
Column %	26.1	41.1	38.5	33.1	49.1	12.0	3.7	33.1
Other								
Visits	1,064	1,084	8,218	12,455	5,350	256	198	28,625
Column %	6.7	5.3	17.1	17.5	9.2	1.4	0.7	11.0
Unknown								
Visits	4	7	10	13	8	3	2	47
Column %	0.0	0.0	0.0	0.0	0.0	0.0	0.0	0.0
Total								
Visits	15,794	20,262	48,070	71,251	58,048	18,791	28,941	261,157
Column %	100.0	100.0	100.0	100.0	100.0	100.0	100.0	100.0

"Other" payer includes self-pay, no charge, and other sources of payment

Emergency department visits include all hospital records (outpatient and inpatient) which originated in the ED.

Inpatient discharges originating in the Emergency Department (23,669 in 2009) are reported here as well as in the hospital inpatient utilization report.

Inpatient discharges exclude newborns (MDC 15). 27 ED records with missing or invalid diagnosis codes are excluded from this analysis.

Table E8a
Emergency Department Visits by Data Year
2005-2009 VT Hospital ED Visits, including VT Residents and Non-Residents
Number of Visits and Row Percents

Inpatient Discharges Originating in ED

		BRAT	CVMC	COPL	FAHC	GIFF	GRAC	MT.A.	NCTY	NEVT	NWST	PORT	RRMC	SWVT	SPRF	TOTAL
2005	Count	1,182	2,092	471	7,684	458	1	66	381	586	1,173	821	4,136	2,987	1,250	23,288
	Row %	5.1	9.0	2.0	33.0	2.0	0.0	0.3	1.6	2.5	5.0	3.5	17.8	12.8	5.4	100.0
2006	Count	1,274	2,199	193	8,007	453	2	46	268	252	1,188	289	3,975	3,327	1,118	22,591
	Row %	5.6	9.7	0.9	35.4	2.0	0.0	0.2	1.2	1.1	5.3	1.3	17.6	14.7	4.9	100.0
2007	Count	1,190	2,290	196	8,219	629	1	61	297	318	1,339	239	4,134	3,451	1,461	23,825
	Row %	5.0	9.6	0.8	34.5	2.6	0.0	0.3	1.2	1.3	5.6	1.0	17.4	14.5	6.1	100.0
2008	Count	1,050	2,505	213	8,536	634	4	72	322	404	1,117	232	4,129	3,426	1,506	24,150
	Row %	4.3	10.4	0.9	35.3	2.6	0.0	0.3	1.3	1.7	4.6	1.0	17.1	14.2	6.2	100.0
2009	Count	977	2,280	194	8,652	686	15	59	256	375	1,009	304	4,457	2,958	1,447	23,669
	Row %	4.1	9.6	0.8	36.6	2.9	0.1	0.2	1.1	1.6	4.3	1.3	18.8	12.5	6.1	100.0

ED Visits, Not Admitted

		BRAT	CVMC	COPL	FAHC	GIFF	GRAC	MT.A.	NCTY	NEVT	NWST	PORT	RRMC	SWVT	SPRF	TOTAL
2005	Count	10,579	23,445	11,206	43,420	5,901	2,049	5,754	10,653	9,659	23,345	12,221	29,537	17,406	11,454	216,629
	Row %	4.9	10.8	5.2	20.0	2.7	0.9	2.7	4.9	4.5	10.8	5.6	13.6	8.0	5.3	100.0
2006	Count	10,682	25,546	11,567	44,913	6,088	2,165	5,647	11,184	10,089	23,513	13,024	30,441	17,529	13,616	226,004
	Row %	4.7	11.3	5.1	19.9	2.7	1.0	2.5	4.9	4.5	10.4	5.8	13.5	7.8	6.0	100.0
2007	Count	11,015	25,414	11,557	46,055	5,948	2,431	5,273	12,307	10,498	25,664	12,719	29,585	18,238	14,060	230,764
	Row %	4.8	11.0	5.0	20.0	2.6	1.1	2.3	5.3	4.5	11.1	5.5	12.8	7.9	6.1	100.0
2008	Count	11,171	27,092	12,186	48,872	6,187	2,575	5,050	13,083	10,838	26,316	13,281	28,918	19,370	14,650	239,589
	Row %	4.7	11.3	5.1	20.4	2.6	1.1	2.1	5.5	4.5	11.0	5.5	12.1	8.1	6.1	100.0
2009	Count	11,430	27,564	12,121	48,936	6,807	2,786	4,996	13,740	9,713	26,270	13,344	29,585	15,404	14,792	237,488
	Row %	4.8	11.6	5.1	20.6	2.9	1.2	2.1	5.8	4.1	11.1	5.6	12.5	6.5	6.2	100.0

Table E8a
Emergency Department Visits by Data Year
2005-2009 VT Hospital ED Visits, including VT Residents and Non-Residents
Number of Visits and Row Percents

All ED Visits, Including Those Admitted

		BRAT	CVMC	COPL	FAHC	GIFF	GRAC	MT.A.	NCTY	NEVT	NWST	PORT	RRMC	SWVT	SPRF	TOTAL
2005	Count	11,761	25,537	11,677	51,104	6,359	2,050	5,820	11,034	10,245	24,518	13,042	33,673	20,393	12,704	239,917
	Row %	4.9	10.6	4.9	21.3	2.7	0.9	2.4	4.6	4.3	10.2	5.4	14.0	8.5	5.3	100.0
2006	Count	11,956	27,745	11,760	52,920	6,541	2,167	5,693	11,452	10,341	24,701	13,313	34,416	20,856	14,734	248,595
	Row %	4.8	11.2	4.7	21.3	2.6	0.9	2.3	4.6	4.2	9.9	5.4	13.8	8.4	5.9	100.0
2007	Count	12,205	27,704	11,753	54,274	6,577	2,432	5,334	12,604	10,816	27,003	12,958	33,719	21,689	15,521	254,589
	Row %	4.8	10.9	4.6	21.3	2.6	1.0	2.1	5.0	4.2	10.6	5.1	13.2	8.5	6.1	100.0
2008	Count	12,221	29,597	12,399	57,408	6,821	2,579	5,122	13,405	11,242	27,433	13,513	33,047	22,796	16,156	263,739
	Row %	4.6	11.2	4.7	21.8	2.6	1.0	1.9	5.1	4.3	10.4	5.1	12.5	8.6	6.1	100.0
2009	Count	12,407	29,844	12,315	57,588	7,493	2,801	5,055	13,996	10,088	27,279	13,648	34,042	18,362	16,239	261,157
	Row %	4.8	11.4	4.7	22.1	2.9	1.1	1.9	5.4	3.9	10.4	5.2	13.0	7.0	6.2	100.0

Emergency department visits include all hospital records (outpatient and inpatient) which originated in the ED.

Inpatient discharges originating in the Emergency Department (23,669 in 2009) are reported here as well as in the hospital inpatient utilization report.

Inpatient discharges exclude newborns (MDC 15). 27 ED records with missing or invalid diagnosis codes are excluded from this analysis.

Column headers denote hospitals: key to hospital abbreviations can be found in Appendix E4.

Table E8b
Clinical Classifications Software (CCS) High Level Diagnosis Groups by Vermont Hospitals
2009 VT Hospital ED Visits, including VT Residents and Non-Residents
Number of Visits and Column Percents

Diagnosis Group	BRAT	CVMC	COPL	FAHC	GIFF	GRAC	MT.A	NCTY	NEVT	NWST	PORT	RRMC	SWVT	SPRF	Total
Injury & poisoning															
Visits	4,037	7,580	4,503	16,708	2,195	929	1,583	3,850	2,710	8,090	3,994	9,835	5,026	4,527	75,567
Col %	32.5	25.4	36.6	29.0	29.3	33.2	31.3	27.5	26.9	29.7	29.3	28.9	27.4	27.9	28.9
Diseases of the respiratory system															
Visits	1,743	4,725	1,772	6,037	1,101	412	665	2,264	1,424	4,116	1,870	4,807	2,255	2,388	35,579
Col %	14.0	15.8	14.4	10.5	14.7	14.7	13.2	16.2	14.1	15.1	13.7	14.1	12.3	14.7	13.6
Symptoms, signs & ill-defined conditions															
Visits	884	3,069	1,104	6,742	608	284	510	1,303	1,156	2,984	1,611	3,255	1,794	1,589	26,893
Col %	7.1	10.3	9.0	11.7	8.1	10.1	10.1	9.3	11.5	10.9	11.8	9.6	9.8	9.8	10.3
Diseases of the digestive system															
Visits	1,053	2,594	957	4,547	638	161	357	1,015	884	2,135	1,108	2,697	1,606	1,359	21,111
Col %	8.5	8.7	7.8	7.9	8.5	5.7	7.1	7.3	8.8	7.8	8.1	7.9	8.7	8.4	8.1
Diseases of the nervous system & sense organs															
Visits	889	2,318	858	4,121	600	239	373	1,108	916	2,307	1,170	3,117	1,297	1,234	20,547
Col %	7.2	7.8	7.0	7.2	8.0	8.5	7.4	7.9	9.1	8.5	8.6	9.2	7.1	7.6	7.9
Diseases of the circulatory system															
Visits	760	1,743	595	4,951	505	194	400	863	739	1,482	937	2,522	1,962	1,207	18,860
Col %	6.1	5.8	4.8	8.6	6.7	6.9	7.9	6.2	7.3	5.4	6.9	7.4	10.7	7.4	7.2
Musculoskeletal system & connective tissue															
Visits	687	2,665	719	3,208	597	188	329	1,089	607	1,904	991	1,867	1,166	842	16,859
Col %	5.5	8.9	5.8	5.6	8.0	6.7	6.5	7.8	6.0	7.0	7.3	5.5	6.4	5.2	6.5
Diseases of the genitourinary system															
Visits	557	1,332	545	2,764	380	123	228	761	635	1,373	592	1,596	1,053	801	12,740
Col %	4.5	4.5	4.4	4.8	5.1	4.4	4.5	5.4	6.3	5.0	4.3	4.7	5.7	4.9	4.9
Mental disorders															
Visits	810	1,297	328	3,034	228	49	185	360	344	628	381	1,449	577	659	10,329
Col %	6.5	4.3	2.7	5.3	3.0	1.7	3.7	2.6	3.4	2.3	2.8	4.3	3.1	4.1	4.0
Diseases of the skin & subcutaneous tissue															
Visits	331	1,067	320	1,597	201	87	223	548	256	1,055	415	1,028	517	870	8,515
Col %	2.7	3.6	2.6	2.8	2.7	3.1	4.4	3.9	2.5	3.9	3.0	3.0	2.8	5.4	3.3
Infectious & parasitic diseases															
Visits	117	597	262	901	194	54	77	277	77	421	185	690	389	282	4,523
Col %	0.9	2.0	2.1	1.6	2.6	1.9	1.5	2.0	0.8	1.5	1.4	2.0	2.1	1.7	1.7

Table E8b
Clinical Classifications Software (CCS) High Level Diagnosis Groups by Vermont Hospitals
2009 VT Hospital ED Visits, including VT Residents and Non-Residents
Number of Visits and Column Percents

Diagnosis Group	BRAT	CVMC	COPL	FAHC	GIFF	GRAC	MT.A	NCTY	NEVT	NWST	PORT	RRMC	SWVT	SPRF	Total	
Endocrine, nutritional, metabolic & immunity disorders																
Visits	256	351	124	1,117	105	59	62	210	135	339	200	491	297	204	3,950	
Col %	2.1	1.2	1.0	1.9	1.4	2.1	1.2	1.5	1.3	1.2	1.5	1.4	1.6	1.3	1.5	
Contraception & complications of pregnancy & childbirth																
Visits	109	134	120	842	33	3	9	125	63	119	71	246	114	91	2,079	
Col %	0.9	0.4	1.0	1.5	0.4	0.1	0.2	0.9	0.6	0.4	0.5	0.7	0.6	0.6	0.8	
Neoplasms																
Visits	36	67	16	352	12	1	8	32	29	50	15	122	69	20	829	
Col %	0.3	0.2	0.1	0.6	0.2	0.0	0.2	0.2	0.3	0.2	0.1	0.4	0.4	0.1	0.3	
Diseases of the blood & blood-forming organs																
Visits	35	35	15	178	14	1	11	34	22	68	15	87	80	51	646	
Col %	0.3	0.1	0.1	0.3	0.2	0.0	0.2	0.2	0.2	0.2	0.1	0.3	0.4	0.3	0.2	
Conditions originating in the perinatal period																
Visits	12	25	6	48	15	2	3	17	7	25	7	19	11	3	200	
Col %	0.1	0.1	0.0	0.1	0.2	0.1	0.1	0.1	0.1	0.1	0.1	0.1	0.1	0.0	0.1	
Congenital anomalies																
Visits	7	5	0	42	5	0	0	5	1	5	1	10	11	6	98	
Col %	0.1	0.0	0.0	0.1	0.1	0.0	0.0	0.0	0.0	0.0	0.0	0.0	0.1	0.0	0.0	
Residual codes, unclassified, all Ecodes																
Visits	84	240	71	399	62	15	32	135	83	178	85	204	138	106	1,832	
Col %	0.7	0.8	0.6	0.7	0.8	0.5	0.6	1.0	0.8	0.7	0.6	0.6	0.8	0.7	0.7	
Total																
Visits	12,407	29,844	12,315	57,588	7,493	2,801	5,055	13,996	10,088	27,279	13,648	34,042	18,362	16,239	261,157	
Col %	100.0	100.0	100.0	100.0	100.0	100.0	100.0	100.0	100.0	100.0	100.0	100.0	100.0	100.0	100.0	

Emergency department visits include all hospital records (outpatient and inpatient) which originated in the ED.

Inpatient discharges originating in the Emergency Department (23,669 in 2009) are reported here as well as in the hospital inpatient utilization report.

Inpatient discharges exclude newborns (MDC 15). 27 ED records with missing or invalid diagnosis codes are excluded from this analysis.

Column headers denote hospitals: key to hospital abbreviations can be found in Appendix E4.

Table E9
Primary Payer by Vermont Hospitals
2009 VT Hospital ED Visits, including VT Residents and Non-Residents
Number of Visits and Column Percents

Primary Payer		BRAT	CVMC	COPL	FAHC	GIFF	GRAC	MT.A	NCTY	NEVT	NWST	PORT	RRMC	SWVT	SPRF	Total
Medicare	Visits	3,099	6,791	2,374	12,102	1,737	817	1,498	3,421	2,284	6,201	3,217	8,339	5,346	4,369	61,595
	Col %	25.0	22.8	19.3	21.0	23.2	29.2	29.6	24.4	22.6	22.7	23.6	24.5	29.1	26.9	23.6
Medicaid	Visits	3,335	9,239	3,223	14,546	2,306	642	912	5,410	3,072	9,181	3,700	11,222	4,570	4,966	76,324
	Col %	26.9	31.0	26.2	25.3	30.8	22.9	18.0	38.7	30.5	33.7	27.1	33.0	24.9	30.6	29.2
Other Govt	Visits	70	408	0	944	69	6	32	166	38	355	89	248	110	39	2,574
	Col %	0.6	1.4	0.0	1.6	0.9	0.2	0.6	1.2	0.4	1.3	0.7	0.7	0.6	0.2	1.0
Workers Comp.	Visits	452	626	196	1,038	145	59	146	342	178	583	369	879	404	161	5,578
	Col %	3.6	2.1	1.6	1.8	1.9	2.1	2.9	2.4	1.8	2.1	2.7	2.6	2.2	1.0	2.1
Private Insurance	Visits	4,222	9,983	4,240	22,923	2,333	957	1,174	3,607	3,523	8,182	4,688	9,936	6,425	4,221	86,414
	Col %	34.0	33.5	34.4	39.8	31.1	34.2	23.2	25.8	34.9	30.0	34.3	29.2	35.0	26.0	33.1
Other	Visits	1,227	2,797	2,255	6,035	903	320	1,293	1,050	993	2,774	1,585	3,403	1,507	2,483	28,625
	Col %	9.9	9.4	18.3	10.5	12.1	11.4	25.6	7.5	9.8	10.2	11.6	10.0	8.2	15.3	11.0
Unknown	Visits	2	0	27	0	0	0	0	0	0	3	0	15	0	0	47
	Col %	0.0	0.0	0.2	0.0	0.0	0.0	0.0	0.0	0.0	0.0	0.0	0.0	0.0	0.0	0.0
Total	Visits	12,407	29,844	12,315	57,588	7,493	2,801	5,055	13,996	10,088	27,279	13,648	34,042	18,362	16,239	261,157
	Col %	100.0	100.0	100.0	100.0	100.0	100.0	100.0	100.0	100.0	100.0	100.0	100.0	100.0	100.0	100.0

"Other" payer includes self-pay, no charge, and other sources of payment.

Emergency department visits include all hospital records (outpatient and inpatient) which originated in the ED.

Inpatient discharges originating in the Emergency Department (23,669 in 2009) are reported here as well as in the hospital inpatient utilization report.

Inpatient discharges exclude newborns (MDC 15). 27 ED records with missing or invalid diagnosis codes are excluded from this analysis.

Column headers denote hospitals: key to hospital abbreviations can be found in Appendix E4.

Table E10
Clinical Classifications Software (CCS) High Level Diagnosis Groups by VT, NH, MA and NY Hospitals
2009 Hospital ED Visits, including VT Residents Only
Number of Visits and Column Percents

Diagnosis Group	BRAT	CVMC	COPL	DHMC	FAHC	GIFF	GRAC	MT.A	NCTY	NEVT	NWST	PORT	RRMC	SWVT	SPRF	Other NH	MA	NY	Total
Injury & poisoning																			
Visits	3,003	7,109	4,415	2,710	15,146	2,058	771	1,162	3,483	2,464	7,797	3,595	8,521	3,443	3,535	3,330	766	533	73,841
Col %	31.7	24.9	36.3	21.7	28.4	28.7	32.1	30.3	26.4	25.9	29.3	29.2	27.6	25.7	26.2	27.9	31.9	35.0	27.9
Diseases of the respiratory system																			
Visits	1,339	4,524	1,764	1,412	5,676	1,075	358	489	2,182	1,367	4,034	1,702	4,415	1,705	2,067	1,949	259	142	36,459
Col %	14.1	15.8	14.5	11.3	10.7	15.0	14.9	12.8	16.5	14.4	15.2	13.8	14.3	12.7	15.3	16.3	10.8	9.3	13.8
Symptoms, signs & ill-defined conditions																			
Visits	665	2,946	1,087	1,337	6,282	576	242	392	1,239	1,106	2,937	1,457	2,954	1,336	1,360	1,064	225	142	27,347
Col %	7.0	10.3	8.9	10.7	11.8	8.0	10.1	10.2	9.4	11.6	11.1	11.8	9.6	10.0	10.1	8.9	9.4	9.3	10.3
Diseases of the digestive system																			
Visits	827	2,530	944	917	4,253	621	143	264	978	852	2,094	997	2,492	1,152	1,144	1,020	152	96	21,476
Col %	8.7	8.9	7.8	7.3	8.0	8.7	6.0	6.9	7.4	8.9	7.9	8.1	8.1	8.6	8.5	8.5	6.3	6.3	8.1
Diseases of the nervous system & sense organs																			
Visits	676	2,238	850	1,024	3,788	573	206	287	1,064	876	2,254	1,039	2,898	962	1,052	991	196	129	21,103
Col %	7.1	7.8	7.0	8.2	7.1	8.0	8.6	7.5	8.1	9.2	8.5	8.4	9.4	7.2	7.8	8.3	8.1	8.5	8.0
Diseases of the circulatory system																			
Visits	603	1,686	586	1,252	4,587	495	179	317	820	707	1,453	866	2,330	1,406	1,012	543	152	130	19,124
Col %	6.4	5.9	4.8	10.0	8.6	6.9	7.5	8.3	6.2	7.4	5.5	7.0	7.6	10.5	7.5	4.5	6.3	8.5	7.2
Musculoskeletal system & connective tissue																			
Visits	512	2,583	711	1,205	2,978	576	159	265	1,045	571	1,872	913	1,725	875	692	919	159	65	17,825
Col %	5.4	9.0	5.9	9.7	5.6	8.0	6.6	6.9	7.9	6.0	7.0	7.4	5.6	6.5	5.1	7.7	6.6	4.3	6.7
Diseases of the genitourinary system																			
Visits	398	1,280	541	559	2,578	367	110	169	731	608	1,336	514	1,453	774	674	627	130	72	12,921
Col %	4.2	4.5	4.5	4.5	4.8	5.1	4.6	4.4	5.5	6.4	5.0	4.2	4.7	5.8	5.0	5.2	5.4	4.7	4.9
Mental disorders																			
Visits	667	1,260	325	651	2,893	216	41	159	350	325	614	353	1,380	507	580	226	81	86	10,714
Col %	7.0	4.4	2.7	5.2	5.4	3.0	1.7	4.2	2.6	3.4	2.3	2.9	4.5	3.8	4.3	1.9	3.4	5.7	4.1
Diseases of the skin & subcutaneous tissue																			
Visits	252	1,010	316	344	1,490	191	75	168	516	244	1,022	358	939	396	710	544	108	32	8,715
Col %	2.7	3.5	2.6	2.8	2.8	2.7	3.1	4.4	3.9	2.6	3.8	2.9	3.0	3.0	5.3	4.6	4.5	2.1	3.3
Infectious & parasitic diseases																			
Visits	86	570	262	245	830	189	42	61	265	76	400	164	631	284	240	350	76	28	4,799
Col %	0.9	2.0	2.2	2.0	1.6	2.6	1.8	1.6	2.0	0.8	1.5	1.3	2.0	2.1	1.8	2.9	3.2	1.8	1.8

Table E10
Clinical Classifications Software (CCS) High Level Diagnosis Groups by VT, NH, MA and NY Hospitals
2009 Hospital ED Visits, including VT Residents Only
Number of Visits and Column Percents

Diagnosis Group	BRAT	CVMC	COPL	DHMC	FAHC	GIFF	GRAC	MT.A	NCTY	NEVT	NWST	PORT	RRMC	SWVT	SPRF	Other NH	MA	NY	Total
Endocrine, nutritional, metabolic & immunity disorders																			
Visits	213	340	123	172	1,044	103	55	47	205	131	330	190	456	221	184	140	32	20	4,006
Col %	2.3	1.2	1.0	1.4	2.0	1.4	2.3	1.2	1.6	1.4	1.2	1.5	1.5	1.7	1.4	1.2	1.3	1.3	1.5
Contraception & complications of pregnancy & childbirth																			
Visits	89	131	120	45	795	31	1	7	124	62	117	66	231	84	71	110	30	22	2,136
Col %	0.9	0.5	1.0	0.4	1.5	0.4	0.0	0.2	0.9	0.7	0.4	0.5	0.7	0.6	0.5	0.9	1.2	1.4	0.8
Neoplasms																			
Visits	27	66	16	140	298	12	1	6	31	28	49	14	113	54	16	14	3	11	899
Col %	0.3	0.2	0.1	1.1	0.6	0.2	0.0	0.2	0.2	0.3	0.2	0.1	0.4	0.4	0.1	0.1	0.1	0.7	0.3
Diseases of the blood & blood-forming organs																			
Visits	22	33	15	62	159	13	1	9	34	22	68	14	79	63	50	15	7	4	670
Col %	0.2	0.1	0.1	0.5	0.3	0.2	0.0	0.2	0.3	0.2	0.3	0.1	0.3	0.5	0.4	0.1	0.3	0.3	0.3
Conditions originating in the perinatal period																			
Visits	9	25	6	6	47	15	2	2	17	7	23	6	18	8	3	7	0	1	202
Col %	0.1	0.1	0.0	0.0	0.1	0.2	0.1	0.1	0.1	0.1	0.1	0.0	0.1	0.1	0.0	0.1	0.0	0.1	0.1
Congenital anomalies																			
Visits	4	5	0	11	25	5	0	0	5	1	5	1	10	8	5	4	1	1	91
Col %	0.0	0.0	0.0	0.1	0.0	0.1	0.0	0.0	0.0	0.0	0.0	0.0	0.0	0.1	0.0	0.0	0.0	0.1	0.0
Residual codes, unclassified, all Ecodes																			
Visits	71	229	68	393	372	57	13	26	127	79	173	79	187	102	92	90	28	8	2,194
Col %	0.8	0.8	0.6	3.1	0.7	0.8	0.5	0.7	1.0	0.8	0.7	0.6	0.6	0.8	0.7	0.8	1.2	0.5	0.8
Total																			
Visits	9,463	28,565	12,149	12,485	53,241	7,173	2,399	3,830	13,216	9,526	26,578	12,328	30,832	13,380	13,487	11,943	2,405	1,522	264,522
Col %	100.0	100.0	100.0	100.0	100.0	100.0	100.0	100.0	100.0	100.0	100.0	100.0	100.0	100.0	100.0	100.0	100.0	100.0	100.0

Massachusetts hospital data provided by the Massachusetts Division of Health Care Finance and Policy.

New Hampshire hospital data provided by the New Hampshire Department of Health and Human Services.

New York hospital data provided by the New York Department of Health.

Emergency department visits include all hospital records (outpatient and inpatient) which originated in the ED.

Inpatient discharges originating in the Emergency Department (23,669 in 2009) are reported here as well as in the hospital inpatient utilization report.

Inpatient discharges exclude newborns (MDC 15). 27 ED records with missing or invalid diagnosis codes are excluded from this analysis.

Column headers denote hospitals: key to hospital abbreviations can be found in Appendix E4.

Table E11a
Patient Origin Report: ED Visits, Not Admitted
by Hospital Service Area, 2009
Number of Visits and Row Percents

Hospital Service Area																Other	TOTAL
	BRAT	CVMC	COPL	DHMC	FAHC	GIFF	GRAC	MT.A	NCTY	NEVT	NWST	PORT	RRMC	SWVT	SPRF	NonVT	
BARRE (%)	21 0.1	24,669 87.0	401 1.4	339 1.2	1,016 3.6	1,023 3.6	3 0.0	10 0.0	38 0.1	128 0.5	55 0.2	22 0.1	49 0.2	4 0.0	18 0.1	567 2.0	28,363 100.0
BENNINGTON (%)	478 3.5	5 0.0	2 0.0	66 0.5	46 0.3	12 0.1	143 1.1	2 0.0	3 0.0	4 0.0	5 0.0	17 0.1	433 3.2	11,114 81.9	43 0.3	1,195 8.8	13,568 100.0
BRATTLEBORO (%)	7,766 71.0	13 0.1	4 0.0	125 1.1	35 0.3	2 0.0	1,784 16.3	18 0.2	6 0.1	2 0.0	3 0.0	8 0.1	43 0.4	43 0.4	428 3.9	654 6.0	10,934 100.0
BURLINGTON (%)	44 0.1	270 0.6	937 2.0	103 0.2	40,543 85.8	46 0.1	3 0.0	6 0.0	64 0.1	38 0.1	3,383 7.2	841 1.8	132 0.3	6 0.0	31 0.1	822 1.7	47,269 100.0
MIDDLEBURY (%)	8 0.1	18 0.2	15 0.1	26 0.2	1,210 11.2	13 0.1	2 0.0	2 0.0	8 0.1	5 0.0	14 0.1	9,087 84.1	258 2.4	1 0.0	3 0.0	141 1.3	10,811 100.0
MORRISVILLE (%)	6 0.1	503 4.3	10,089 86.0	53 0.5	520 4.4	12 0.1	1 0.0	1 0.0	98 0.8	203 1.7	75 0.6	9 0.1	19 0.2	2 0.0	5 0.0	131 1.1	11,727 100.0
NEWPORT (%)	5 0.0	50 0.3	336 2.3	112 0.8	149 1.0	6 0.0	1 0.0	6 0.0	12,547 85.7	443 3.0	35 0.2	8 0.1	15 0.1	0 0.0	15 0.1	906 6.2	14,634 100.0
RANDOLPH (%)	6 0.1	295 5.3	9 0.2	451 8.1	49 0.9	4,366 78.6	0 0.0	14 0.3	5 0.1	11 0.2	3 0.1	62 1.1	141 2.5	1 0.0	1 0.0	144 2.6	5,558 100.0
RUTLAND (%)	28 0.1	48 0.2	14 0.0	382 1.3	294 1.0	44 0.2	5 0.0	13 0.0	10 0.0	5 0.0	14 0.0	1,931 6.8	25,065 87.6	57 0.2	183 0.6	514 1.8	28,607 100.0
SPRINGFIELD (%)	260 1.8	21 0.1	10 0.1	601 4.1	37 0.3	11 0.1	438 3.0	635 4.4	11 0.1	9 0.1	7 0.0	6 0.0	330 2.3	29 0.2	11,257 77.6	836 5.8	14,498 100.0
ST ALBANS (%)	8 0.0	41 0.2	85 0.4	18 0.1	1,661 6.9	10 0.0	0 0.0	0 0.0	71 0.3	19 0.1	21,968 91.0	34 0.1	29 0.1	0 0.0	5 0.0	186 0.8	24,135 100.0
ST JOHNSBURY (%)	9 0.1	119 1.1	48 0.5	224 2.1	71 0.7	7 0.1	1 0.0	5 0.0	100 0.9	8,123 76.2	10 0.1	2 0.0	10 0.1	1 0.0	7 0.1	1,927 18.1	10,664 100.0
WHITE RIVER JCT (%)	19 0.1	279 1.4	10 0.1	7,458 38.4	82 0.4	946 4.9	4 0.0	3,068 15.8	12 0.1	175 0.9	10 0.1	22 0.1	209 1.1	4 0.0	237 1.2	6,897 35.5	19,432 100.0
Out of State Residents (%)	2,772 12.5	1,233 5.6	161 0.7	0 0.0	3,223 14.5	309 1.4	401 1.8	1,216 5.5	767 3.5	548 2.5	688 3.1	1,295 5.8	2,852 12.9	4,142 18.7	2,559 11.5	0 0.0	22,166 100.0
Total (%)	11,430 4.4	27,564 10.5	12,121 4.6	9,958 3.8	48,936 18.7	6,807 2.6	2,786 1.1	4,996 1.9	13,740 5.2	9,713 3.7	26,270 10.0	13,344 5.1	29,585 11.3	15,404 5.9	14,792 5.6	14,920 5.7	262,366 100.0

Column headers denote hospitals, key to hospital abbreviations can be found in Appendix E4.

Table E11b
Patient Origin Report: ED Visits, Not Admitted
by Hospital Service Area and Ziptown, 2009
Number of Visits and Row Percents

BARRE																	Other	
ZIP TOWN	BRAT	CVMC	COPL	DHMC	FAHC	GIFF	GRAC	MT.A	NCTY	NEVT	NWST	PORT	RRMC	SWVT	SPRF	NonVT	TOTAL	
Calais +	2	838	82	7	19	8	0	2	0	4	1	0	2	0	0	18	983	
(%)	0.2	85.2	8.3	0.7	1.9	0.8	0.0	0.2	0.0	0.4	0.1	0.0	0.2	0.0	0.0	1.8	100.0	
Marshfield +	0	658	56	6	16	7	0	0	3	78	0	1	0	0	1	14	840	
(%)	0.0	78.3	6.7	0.7	1.9	0.8	0.0	0.0	0.4	9.3	0.0	0.1	0.0	0.0	0.1	1.7	100.0	
Montpelier +	12	16,276	97	141	380	263	2	2	22	31	30	6	26	3	10	221	17,522	
(%)	0.1	92.9	0.6	0.8	2.2	1.5	0.0	0.0	0.1	0.2	0.2	0.0	0.1	0.0	0.1	1.3	100.0	
Moretown	2	283	2	3	52	3	0	0	0	0	2	0	1	0	0	6	354	
(%)	0.6	79.9	0.6	0.8	14.7	0.8	0.0	0.0	0.0	0.0	0.6	0.0	0.3	0.0	0.0	1.7	100.0	
Northfield +	1	1,698	11	29	66	472	0	3	0	6	3	1	4	0	4	23	2,321	
(%)	0.0	73.2	0.5	1.2	2.8	20.3	0.0	0.1	0.0	0.3	0.1	0.0	0.2	0.0	0.2	1.0	100.0	
Plainfield	1	676	2	2	16	6	0	1	1	2	1	1	3	0	1	13	726	
(%)	0.1	93.1	0.3	0.3	2.2	0.8	0.0	0.1	0.1	0.3	0.1	0.1	0.4	0.0	0.1	1.8	100.0	
Topsham	0	232	0	92	2	1	0	0	0	1	0	0	1	0	0	176	505	
(%)	0.0	45.9	0.0	18.2	0.4	0.2	0.0	0.0	0.0	0.2	0.0	0.0	0.2	0.0	0.0	34.9	100.0	
Waitsfield +	0	737	16	20	117	46	0	2	2	1	0	7	7	0	1	37	993	
(%)	0.0	74.2	1.6	2.0	11.8	4.6	0.0	0.2	0.2	0.1	0.0	0.7	0.7	0.0	0.1	3.7	100.0	
Waterbury +	3	1,384	131	3	319	10	1	0	9	5	17	6	4	1	0	28	1,921	
(%)	0.2	72.0	6.8	0.2	16.6	0.5	0.1	0.0	0.5	0.3	0.9	0.3	0.2	0.1	0.0	1.5	100.0	
Williamston +	0	1,887	4	36	29	207	0	0	1	0	1	0	1	0	1	31	2,198	
(%)	0.0	85.9	0.2	1.6	1.3	9.4	0.0	0.0	0.0	0.0	0.0	0.0	0.0	0.0	0.0	1.4	100.0	
AREA TOTAL	21	24,669	401	339	1,016	1,023	3	10	38	128	55	22	49	4	18	567	28,363	
(%)	0.1	87.0	1.4	1.2	3.6	3.6	0.0	0.0	0.1	0.5	0.2	0.1	0.2	0.0	0.1	2.0	100.0	

Table E11b
Patient Origin Report: ED Visits, Not Admitted
by Hospital Service Area and Ziptown, 2009
Number of Visits and Row Percents

BENNINGTON																	
ZIP TOWN	BRAT	CVMC	COPL	DHMC	FAHC	GIFF	GRAC	MT.A	NCTY	NEVT	NWST	PORT	RRMC	SWVT	SPRF	nonVT	TOTAL
Arlington +	0	1	0	5	1	7	1	0	1	1	0	2	25	640	3	37	724
(%)	0.0	0.1	0.0	0.7	0.1	1.0	0.1	0.0	0.1	0.1	0.0	0.3	3.5	88.4	0.4	5.1	100.0
Bennington +	21	3	1	26	22	4	1	1	0	2	4	8	78	9,080	20	530	9,801
(%)	0.2	0.0	0.0	0.3	0.2	0.0	0.0	0.0	0.0	0.0	0.0	0.1	0.8	92.6	0.2	5.4	100.0
Dorset +	0	0	0	9	5	1	0	0	0	0	0	4	145	212	2	35	413
(%)	0.0	0.0	0.0	2.2	1.2	0.2	0.0	0.0	0.0	0.0	0.0	1.0	35.1	51.3	0.5	8.5	100.0
Dover +	142	0	1	7	6	0	101	0	0	0	0	0	1	93	1	18	370
(%)	38.4	0.0	0.3	1.9	1.6	0.0	27.3	0.0	0.0	0.0	0.0	0.0	0.3	25.1	0.3	4.9	100.0
Manchester	5	0	0	10	10	0	6	1	0	1	0	2	179	674	12	44	944
(%)	0.5	0.0	0.0	1.1	1.1	0.0	0.6	0.1	0.0	0.1	0.0	0.2	19.0	71.4	1.3	4.7	100.0
Readsboro +	16	0	0	2	1	0	2	0	0	0	0	0	2	99	0	431	553
(%)	2.9	0.0	0.0	0.4	0.2	0.0	0.4	0.0	0.0	0.0	0.0	0.0	0.4	17.9	0.0	77.9	100.0
Whitingham	128	0	0	3	0	0	8	0	1	0	0	1	3	117	2	54	317
(%)	40.4	0.0	0.0	0.9	0.0	0.0	2.5	0.0	0.3	0.0	0.0	0.3	0.9	36.9	0.6	17.0	100.0
Wilmington +	166	1	0	4	1	0	24	0	1	0	1	0	0	199	3	46	446
(%)	37.2	0.2	0.0	0.9	0.2	0.0	5.4	0.0	0.2	0.0	0.2	0.0	0.0	44.6	0.7	10.3	100.0
AREA TOTAL	478	5	2	66	46	12	143	2	3	4	5	17	433	11,114	43	1,195	13,568
(%)	3.5	0.0	0.0	0.5	0.3	0.1	1.1	0.0	0.0	0.0	0.0	0.1	3.2	81.9	0.3	8.8	100.0
BRATTLEBORO																	
ZIP TOWN	BRAT	CVMC	COPL	DHMC	FAHC	GIFF	GRAC	MT.A	NCTY	NEVT	NWST	PORT	RRMC	SWVT	SPRF	nonVT	TOTAL
Brattleboro +	6,026	5	1	49	16	1	152	4	5	2	0	3	13	21	35	307	6,640
(%)	90.8	0.1	0.0	0.7	0.2	0.0	2.3	0.1	0.1	0.0	0.0	0.0	0.2	0.3	0.5	4.6	100.0
Jamaica +	84	2	1	12	1	0	541	0	0	0	1	0	16	18	31	27	734
(%)	11.4	0.3	0.1	1.6	0.1	0.0	73.7	0.0	0.0	0.0	0.1	0.0	2.2	2.5	4.2	3.7	100.0
Newfane +	303	1	1	18	5	1	1,024	1	0	0	0	1	2	3	36	24	1,420
(%)	21.3	0.1	0.1	1.3	0.4	0.1	72.1	0.1	0.0	0.0	0.0	0.1	0.1	0.2	2.5	1.7	100.0

Table E11b
Patient Origin Report: ED Visits, Not Admitted
by Hospital Service Area and Ziptown, 2009
Number of Visits and Row Percents

BRATTLEBORO

ZIP TOWN	BRAT	CVMC	COPL	DHMC	FAHC	GIFF	GRAC	MT.A	NCTY	NEVT	NWST	PORT	RRMC	SWVT	SPRF	nonVT	TOTAL
Vernon	542	4	0	5	1	0	16	1	1	0	1	0	3	0	7	51	632
(%)	85.8	0.6	0.0	0.8	0.2	0.0	2.5	0.2	0.2	0.0	0.2	0.0	0.5	0.0	1.1	8.1	100.0
Westminster +	811	1	1	41	12	0	51	12	0	0	1	4	9	1	319	245	1,508
(%)	53.8	0.1	0.1	2.7	0.8	0.0	3.4	0.8	0.0	0.0	0.1	0.3	0.6	0.1	21.2	16.2	100.0
AREA TOTAL	7,766	13	4	125	35	2	1,784	18	6	2	3	8	43	43	428	654	10,934
(%)	71.0	0.1	0.0	1.1	0.3	0.0	16.3	0.2	0.1	0.0	0.0	0.1	0.4	0.4	3.9	6.0	100.0

BURLINGTON

ZIP TOWN	BRAT	CVMC	COPL	DHMC	FAHC	GIFF	GRAC	MT.A	NCTY	NEVT	NWST	PORT	RRMC	SWVT	SPRF	nonVT	TOTAL
Burlington	18	49	45	38	14,337	12	2	3	8	6	89	42	33	3	7	191	14,883
(%)	0.1	0.3	0.3	0.3	96.3	0.1	0.0	0.0	0.1	0.0	0.6	0.3	0.2	0.0	0.0	1.3	100.0
Cambridge +	0	10	767	3	366	1	0	1	3	5	317	0	4	0	0	21	1,498
(%)	0.0	0.7	51.2	0.2	24.4	0.1	0.0	0.1	0.2	0.3	21.2	0.0	0.3	0.0	0.0	1.4	100.0
Charlotte	0	5	4	3	545	1	0	0	1	0	4	22	0	0	0	24	609
(%)	0.0	0.8	0.7	0.5	89.5	0.2	0.0	0.0	0.2	0.0	0.7	3.6	0.0	0.0	0.0	3.9	100.0
Colchester	1	16	5	4	3,795	7	0	0	4	3	82	8	11	0	2	95	4,033
(%)	0.0	0.4	0.1	0.1	94.1	0.2	0.0	0.0	0.1	0.1	2.0	0.2	0.3	0.0	0.0	2.4	100.0
Essex	0	35	18	9	3,443	3	0	0	9	4	80	12	5	1	2	83	3,704
(%)	0.0	0.9	0.5	0.2	93.0	0.1	0.0	0.0	0.2	0.1	2.2	0.3	0.1	0.0	0.1	2.2	100.0
Fairfax	2	4	8	3	324	0	0	0	2	2	1,041	3	10	1	0	15	1,415
(%)	0.1	0.3	0.6	0.2	22.9	0.0	0.0	0.0	0.1	0.1	73.6	0.2	0.7	0.1	0.0	1.1	100.0
Ferrisburgh	0	6	2	0	291	0	0	0	0	0	1	406	9	0	0	17	732
(%)	0.0	0.8	0.3	0.0	39.8	0.0	0.0	0.0	0.0	0.0	0.1	55.5	1.2	0.0	0.0	2.3	100.0
Grand Isle +	2	4	0	1	560	0	1	0	1	1	120	0	2	0	0	17	709
(%)	0.3	0.6	0.0	0.1	79.0	0.0	0.1	0.0	0.1	0.1	16.9	0.0	0.3	0.0	0.0	2.4	100.0
Hinesburg	4	10	3	3	947	0	0	0	0	0	16	56	5	0	2	16	1,062
(%)	0.4	0.9	0.3	0.3	89.2	0.0	0.0	0.0	0.0	0.0	1.5	5.3	0.5	0.0	0.2	1.5	100.0

Table E11b
Patient Origin Report: ED Visits, Not Admitted
by Hospital Service Area and Ziptown, 2009
Number of Visits and Row Percents

BURLINGTON																		
ZIP TOWN	BRAT	CVMC	COPL	DHMC	FAHC	GIFF	GRAC	MT.A	NCTY	NEVT	NWST	PORT	RRMC	SWVT	SPRF	nonVT	TOTAL	
Huntington +	0	17	5	3	565	3	0	0	1	0	8	176	3	0	1	16	798	
(%)	0.0	2.1	0.6	0.4	70.8	0.4	0.0	0.0	0.1	0.0	1.0	22.1	0.4	0.0	0.1	2.0	100.0	
Jericho +	3	15	22	4	1,167	1	0	0	9	2	44	9	4	0	0	42	1,322	
(%)	0.2	1.1	1.7	0.3	88.3	0.1	0.0	0.0	0.7	0.2	3.3	0.7	0.3	0.0	0.0	3.2	100.0	
Milton	4	15	15	2	2,490	1	0	0	8	5	1,300	5	11	0	1	33	3,890	
(%)	0.1	0.4	0.4	0.1	64.0	0.0	0.0	0.0	0.2	0.1	33.4	0.1	0.3	0.0	0.0	0.8	100.0	
Monkton	0	0	0	0	18	1	0	0	0	0	0	32	2	0	0	1	54	
(%)	0.0	0.0	0.0	0.0	33.3	1.9	0.0	0.0	0.0	0.0	0.0	59.3	3.7	0.0	0.0	1.9	100.0	
Richmond	0	18	5	1	748	1	0	0	3	0	0	4	2	0	0	31	813	
(%)	0.0	2.2	0.6	0.1	92.0	0.1	0.0	0.0	0.4	0.0	0.0	0.5	0.2	0.0	0.0	3.8	100.0	
S. Burlington	3	30	14	11	3,932	3	0	1	3	2	37	11	12	1	7	92	4,159	
(%)	0.1	0.7	0.3	0.3	94.5	0.1	0.0	0.0	0.1	0.0	0.9	0.3	0.3	0.0	0.2	2.2	100.0	
Shelburne	0	4	9	3	1,321	3	0	0	4	1	27	24	4	0	0	36	1,436	
(%)	0.0	0.3	0.6	0.2	92.0	0.2	0.0	0.0	0.3	0.1	1.9	1.7	0.3	0.0	0.0	2.5	100.0	
South Hero	0	1	1	1	325	2	0	0	3	1	53	0	2	0	0	6	395	
(%)	0.0	0.3	0.3	0.3	82.3	0.5	0.0	0.0	0.8	0.3	13.4	0.0	0.5	0.0	0.0	1.5	100.0	
Westford	1	1	0	0	192	0	0	0	0	2	71	0	3	0	0	9	279	
(%)	0.4	0.4	0.0	0.0	68.8	0.0	0.0	0.0	0.0	0.7	25.4	0.0	1.1	0.0	0.0	3.2	100.0	
Williston +	4	20	8	5	2,021	4	0	0	5	0	35	8	2	0	1	43	2,156	
(%)	0.2	0.9	0.4	0.2	93.7	0.2	0.0	0.0	0.2	0.0	1.6	0.4	0.1	0.0	0.0	2.0	100.0	
Winooski	2	10	6	9	3,156	3	0	1	0	4	58	23	8	0	8	34	3,322	
(%)	0.1	0.3	0.2	0.3	95.0	0.1	0.0	0.0	0.0	0.1	1.7	0.7	0.2	0.0	0.2	1.0	100.0	
AREA TOTAL	44	270	937	103	40,543	46	3	6	64	38	3,383	841	132	6	31	822	47,269	
(%)	0.1	0.6	2.0	0.2	85.8	0.1	0.0	0.0	0.1	0.1	7.2	1.8	0.3	0.0	0.1	1.7	100.0	

Table E11b
Patient Origin Report: ED Visits, Not Admitted
by Hospital Service Area and Ziptown, 2009
Number of Visits and Row Percents

MIDDLEBURY																	
ZIP TOWN	BRAT	CVMC	COPL	DHMC	FAHC	GIFF	GRAC	MT.A	NCTY	NEVT	NWST	PORT	RRMC	SWVT	SPRF	nonVT	TOTAL
Bridport	0	0	1	1	30	0	1	0	0	0	1	406	6	0	0	8	454
(%)	0.0	0.0	0.2	0.2	6.6	0.0	0.2	0.0	0.0	0.0	0.2	89.4	1.3	0.0	0.0	1.8	100.0
Bristol +	2	6	5	0	417	3	0	1	7	2	6	1,687	9	0	1	30	2,176
(%)	0.1	0.3	0.2	0.0	19.2	0.1	0.0	0.0	0.3	0.1	0.3	77.5	0.4	0.0	0.0	1.4	100.0
Middlebury +	2	5	5	15	182	3	0	0	0	2	6	4,086	81	0	1	53	4,441
(%)	0.0	0.1	0.1	0.3	4.1	0.1	0.0	0.0	0.0	0.0	0.1	92.0	1.8	0.0	0.0	1.2	100.0
New Haven	0	1	1	1	64	3	0	0	0	0	0	431	2	0	0	8	511
(%)	0.0	0.2	0.2	0.2	12.5	0.6	0.0	0.0	0.0	0.0	0.0	84.3	0.4	0.0	0.0	1.6	100.0
Orwell	0	0	0	4	11	0	0	0	0	0	0	255	88	0	0	2	360
(%)	0.0	0.0	0.0	1.1	3.1	0.0	0.0	0.0	0.0	0.0	0.0	70.8	24.4	0.0	0.0	0.6	100.0
Shoreham +	1	1	0	3	31	1	0	1	1	0	1	597	52	1	0	10	700
(%)	0.1	0.1	0.0	0.4	4.4	0.1	0.0	0.1	0.1	0.0	0.1	85.3	7.4	0.1	0.0	1.4	100.0
Vergennes +	3	5	3	2	475	3	1	0	0	1	0	1,625	20	0	1	30	2,169
(%)	0.1	0.2	0.1	0.1	21.9	0.1	0.0	0.0	0.0	0.0	0.0	74.9	0.9	0.0	0.0	1.4	100.0
AREA TOTAL	8	18	15	26	1,210	13	2	2	8	5	14	9,087	258	1	3	141	10,811
(%)	0.1	0.2	0.1	0.2	11.2	0.1	0.0	0.0	0.1	0.0	0.1	84.1	2.4	0.0	0.0	1.3	100.0
MORRISVILLE																	
ZIP TOWN	BRAT	CVMC	COPL	DHMC	FAHC	GIFF	GRAC	MT.A	NCTY	NEVT	NWST	PORT	RRMC	SWVT	SPRF	nonVT	TOTAL
Craftsbury	0	16	391	2	5	0	0	0	31	4	0	0	2	0	0	2	453
(%)	0.0	3.5	86.3	0.4	1.1	0.0	0.0	0.0	6.8	0.9	0.0	0.0	0.4	0.0	0.0	0.4	100.0
Eden +	1	4	887	2	67	0	1	0	14	3	21	0	1	0	1	7	1,009
(%)	0.1	0.4	87.9	0.2	6.6	0.0	0.1	0.0	1.4	0.3	2.1	0.0	0.1	0.0	0.1	0.7	100.0
Hardwick +	0	302	1,449	25	51	3	0	0	29	166	8	2	2	1	1	25	2,064
(%)	0.0	14.6	70.2	1.2	2.5	0.1	0.0	0.0	1.4	8.0	0.4	0.1	0.1	0.0	0.0	1.2	100.0
Hyde Park	0	12	1,183	3	49	1	0	0	8	1	6	0	1	0	0	11	1,275
(%)	0.0	0.9	92.8	0.2	3.8	0.1	0.0	0.0	0.6	0.1	0.5	0.0	0.1	0.0	0.0	0.9	100.0

Table E11b
Patient Origin Report: ED Visits, Not Admitted
by Hospital Service Area and Ziptown, 2009
Number of Visits and Row Percents

MORRISVILLE

ZIP TOWN	BRAT	CVMC	COPL	DHMC	FAHC	GIFF	GRAC	MT.A	NCTY	NEVT	NWST	PORT	RRMC	SWVT	SPRF	nonVT	TOTAL
Johnson	1	16	1,408	5	92	2	0	0	3	3	23	1	4	0	0	6	1,564
(%)	0.1	1.0	90.0	0.3	5.9	0.1	0.0	0.0	0.2	0.2	1.5	0.1	0.3	0.0	0.0	0.4	100.0
Morrisville +	3	92	3,368	6	123	4	0	0	13	22	13	2	6	0	3	48	3,703
(%)	0.1	2.5	91.0	0.2	3.3	0.1	0.0	0.0	0.4	0.6	0.4	0.1	0.2	0.0	0.1	1.3	100.0
Stowe	1	61	1,403	10	133	2	0	1	0	4	4	4	3	1	0	32	1,659
(%)	0.1	3.7	84.6	0.6	8.0	0.1	0.0	0.1	0.0	0.2	0.2	0.2	0.2	0.1	0.0	1.9	100.0
AREA TOTAL	6	503	10,089	53	520	12	1	1	98	203	75	9	19	2	5	131	11,727
(%)	0.1	4.3	86.0	0.5	4.4	0.1	0.0	0.0	0.8	1.7	0.6	0.1	0.2	0.0	0.0	1.1	100.0

NEWPORT

ZIP TOWN	BRAT	CVMC	COPL	DHMC	FAHC	GIFF	GRAC	MT.A	NCTY	NEVT	NWST	PORT	RRMC	SWVT	SPRF	nonVT	TOTAL
Barton +	1	17	38	24	24	0	0	2	2,407	247	5	0	3	0	2	32	2,802
(%)	0.0	0.6	1.4	0.9	0.9	0.0	0.0	0.1	85.9	8.8	0.2	0.0	0.1	0.0	0.1	1.1	100.0
Canaan +	1	0	0	8	2	1	0	0	25	6	0	1	0	0	0	746	790
(%)	0.1	0.0	0.0	1.0	0.3	0.1	0.0	0.0	3.2	0.8	0.0	0.1	0.0	0.0	0.0	94.4	100.0
Irasburg +	0	4	91	8	17	0	0	1	609	18	2	0	0	0	1	7	758
(%)	0.0	0.5	12.0	1.1	2.2	0.0	0.0	0.1	80.3	2.4	0.3	0.0	0.0	0.0	0.1	0.9	100.0
Island Pond +	1	7	8	6	12	3	1	0	875	74	3	1	1	0	0	28	1,020
(%)	0.1	0.7	0.8	0.6	1.2	0.3	0.1	0.0	85.8	7.3	0.3	0.1	0.1	0.0	0.0	2.7	100.0
Lowell +	0	7	151	7	18	0	0	0	380	5	8	1	0	0	0	5	582
(%)	0.0	1.2	25.9	1.2	3.1	0.0	0.0	0.0	65.3	0.9	1.4	0.2	0.0	0.0	0.0	0.9	100.0
Newport +	2	13	30	53	71	2	0	3	7,232	79	11	5	11	0	12	82	7,606
(%)	0.0	0.2	0.4	0.7	0.9	0.0	0.0	0.0	95.1	1.0	0.1	0.1	0.1	0.0	0.2	1.1	100.0
Troy +	0	2	18	6	5	0	0	0	1,019	14	6	0	0	0	0	6	1,076
(%)	0.0	0.2	1.7	0.6	0.5	0.0	0.0	0.0	94.7	1.3	0.6	0.0	0.0	0.0	0.0	0.6	100.0
AREA TOTAL	5	50	336	112	149	6	1	6	12,547	443	35	8	15	0	15	906	14,634
(%)	0.0	0.3	2.3	0.8	1.0	0.0	0.0	0.0	85.7	3.0	0.2	0.1	0.1	0.0	0.1	6.2	100.0

Table E11b
Patient Origin Report: ED Visits, Not Admitted
by Hospital Service Area and Ziptown, 2009
Number of Visits and Row Percents

RANDOLPH																	
ZIP TOWN	BRAT	CVMC	COPL	DHMC	FAHC	GIFF	GRAC	MT.A	NCTY	NEVT	NWST	PORT	RRMC	SWVT	SPRF	nonVT	TOTAL
Bethel +	1	14	1	161	3	732	0	10	2	1	0	0	10	0	0	43	978
(%)	0.1	1.4	0.1	16.5	0.3	74.8	0.0	1.0	0.2	0.1	0.0	0.0	1.0	0.0	0.0	4.4	100.0
Brookfield	0	64	0	8	1	249	0	0	0	2	0	0	1	0	0	8	333
(%)	0.0	19.2	0.0	2.4	0.3	74.8	0.0	0.0	0.0	0.6	0.0	0.0	0.3	0.0	0.0	2.4	100.0
Chelsea	1	70	0	59	6	313	0	1	1	1	0	0	4	0	0	17	473
(%)	0.2	14.8	0.0	12.5	1.3	66.2	0.0	0.2	0.2	0.2	0.0	0.0	0.8	0.0	0.0	3.6	100.0
Pittsfield +	0	1	1	38	0	202	0	0	0	1	1	6	77	0	0	12	339
(%)	0.0	0.3	0.3	11.2	0.0	59.6	0.0	0.0	0.0	0.3	0.3	1.8	22.7	0.0	0.0	3.5	100.0
Randolph +	3	129	6	140	22	2,486	0	1	2	6	2	2	11	1	0	51	2,862
(%)	0.1	4.5	0.2	4.9	0.8	86.9	0.0	0.0	0.1	0.2	0.1	0.1	0.4	0.0	0.0	1.8	100.0
Rochester +	1	17	1	45	17	384	0	2	0	0	0	54	38	0	1	13	573
(%)	0.2	3.0	0.2	7.9	3.0	67.0	0.0	0.3	0.0	0.0	0.0	9.4	6.6	0.0	0.2	2.3	100.0
AREA TOTAL	6	295	9	451	49	4,366	0	14	5	11	3	62	141	1	1	144	5,558
(%)	0.1	5.3	0.2	8.1	0.9	78.6	0.0	0.3	0.1	0.2	0.1	1.1	2.5	0.0	0.0	2.6	100.0
RUTLAND																	
ZIP TOWN	BRAT	CVMC	COPL	DHMC	FAHC	GIFF	GRAC	MT.A	NCTY	NEVT	NWST	PORT	RRMC	SWVT	SPRF	nonVT	TOTAL
Brandon +	4	4	3	16	57	3	0	0	1	0	2	1,386	1,105	0	3	25	2,609
(%)	0.2	0.2	0.1	0.6	2.2	0.1	0.0	0.0	0.0	0.0	0.1	53.1	42.4	0.0	0.1	1.0	100.0
Clarendon +	2	2	0	23	13	3	1	0	1	0	0	4	1,315	1	16	15	1,396
(%)	0.1	0.1	0.0	1.6	0.9	0.2	0.1	0.0	0.1	0.0	0.0	0.3	94.2	0.1	1.1	1.1	100.0
Danby +	0	0	0	16	4	2	0	0	0	0	1	0	447	9	1	4	484
(%)	0.0	0.0	0.0	3.3	0.8	0.4	0.0	0.0	0.0	0.0	0.2	0.0	92.4	1.9	0.2	0.8	100.0
Fair Haven +	3	8	2	40	41	5	0	1	5	1	1	247	2,730	2	3	50	3,139
(%)	0.1	0.3	0.1	1.3	1.3	0.2	0.0	0.0	0.2	0.0	0.0	7.9	87.0	0.1	0.1	1.6	100.0
Mt. Holly	1	2	0	10	3	0	2	7	0	0	0	7	361	1	88	9	491
(%)	0.2	0.4	0.0	2.0	0.6	0.0	0.4	1.4	0.0	0.0	0.0	1.4	73.5	0.2	17.9	1.8	100.0

Table E11b
Patient Origin Report: ED Visits, Not Admitted
by Hospital Service Area and Ziptown, 2009
Number of Visits and Row Percents

RUTLAND																	
ZIP TOWN	BRAT	CVMC	COPL	DHMC	FAHC	GIFF	GRAC	MT.A	NCTY	NEVT	NWST	PORT	RRMC	SWVT	SPRF	nonVT	TOTAL
Pawlet	1	1	0	2	2	0	0	0	0	0	0	0	287	14	0	35	342
(%)	0.3	0.3	0.0	0.6	0.6	0.0	0.0	0.0	0.0	0.0	0.0	0.0	83.9	4.1	0.0	10.2	100.0
Pittsford +	2	3	4	26	12	6	1	1	1	0	1	72	1,391	1	2	24	1,547
(%)	0.1	0.2	0.3	1.7	0.8	0.4	0.1	0.1	0.1	0.0	0.1	4.7	89.9	0.1	0.1	1.6	100.0
Poultney	1	0	1	12	16	1	0	0	0	0	1	17	862	0	3	38	952
(%)	0.1	0.0	0.1	1.3	1.7	0.1	0.0	0.0	0.0	0.0	0.1	1.8	90.5	0.0	0.3	4.0	100.0
Proctor	1	3	1	4	17	2	0	0	0	1	0	14	817	0	2	18	880
(%)	0.1	0.3	0.1	0.5	1.9	0.2	0.0	0.0	0.0	0.1	0.0	1.6	92.8	0.0	0.2	2.0	100.0
Rutland +	10	22	3	194	98	17	1	1	1	3	7	134	12,808	22	42	226	13,589
(%)	0.1	0.2	0.0	1.4	0.7	0.1	0.0	0.0	0.0	0.0	0.1	1.0	94.3	0.2	0.3	1.7	100.0
Wallingford +	1	0	0	9	7	0	0	2	0	0	0	16	888	3	15	14	955
(%)	0.1	0.0	0.0	0.9	0.7	0.0	0.0	0.2	0.0	0.0	0.0	1.7	93.0	0.3	1.6	1.5	100.0
Wells +	2	2	0	10	9	1	0	1	0	0	0	3	521	4	1	43	597
(%)	0.3	0.3	0.0	1.7	1.5	0.2	0.0	0.2	0.0	0.0	0.0	0.5	87.3	0.7	0.2	7.2	100.0
West Rutland +	0	1	0	20	15	4	0	0	1	0	1	31	1,533	0	7	13	1,626
(%)	0.0	0.1	0.0	1.2	0.9	0.2	0.0	0.0	0.1	0.0	0.1	1.9	94.3	0.0	0.4	0.8	100.0
AREA TOTAL	28	48	14	382	294	44	5	13	10	5	14	1,931	25,065	57	183	514	28,607
(%)	0.1	0.2	0.0	1.3	1.0	0.2	0.0	0.0	0.0	0.0	0.0	6.8	87.6	0.2	0.6	1.8	100.0
SPRINGFIELD																	
ZIP TOWN	BRAT	CVMC	COPL	DHMC	FAHC	GIFF	GRAC	MT.A	NCTY	NEVT	NWST	PORT	RRMC	SWVT	SPRF	nonVT	TOTAL
Cavendish	3	2	0	26	2	1	1	32	1	1	0	0	34	0	383	32	518
(%)	0.6	0.4	0.0	5.0	0.4	0.2	0.2	6.2	0.2	0.2	0.0	0.0	6.6	0.0	73.9	6.2	100.0
Chester +	40	2	0	83	5	1	240	14	0	1	4	0	18	0	1,527	66	2,001
(%)	2.0	0.1	0.0	4.1	0.2	0.0	12.0	0.7	0.0	0.0	0.2	0.0	0.9	0.0	76.3	3.3	100.0

Table E11b
Patient Origin Report: ED Visits, Not Admitted
by Hospital Service Area and Ziptown, 2009
Number of Visits and Row Percents

SPRINGFIELD																	
ZIP TOWN	BRAT	CVMC	COPL	DHMC	FAHC	GIFF	GRAC	MT.A	NCTY	NEVT	NWST	PORT	RRMC	SWVT	SPRF	nonVT	TOTAL
Londonderry +	3	1	2	30	6	0	57	2	0	0	0	1	70	26	333	20	551
(%)	0.5	0.2	0.4	5.4	1.1	0.0	10.3	0.4	0.0	0.0	0.0	0.2	12.7	4.7	60.4	3.6	100.0
Ludlow	3	2	1	38	3	3	2	18	0	0	0	1	152	1	525	36	785
(%)	0.4	0.3	0.1	4.8	0.4	0.4	0.3	2.3	0.0	0.0	0.0	0.1	19.4	0.1	66.9	4.6	100.0
Rockingham	191	1	1	82	5	2	132	24	3	1	0	1	17	0	1,797	301	2,558
(%)	7.5	0.0	0.0	3.2	0.2	0.1	5.2	0.9	0.1	0.0	0.0	0.0	0.7	0.0	70.3	11.8	100.0
Springfield	19	12	6	281	16	4	6	228	7	6	3	2	35	2	6,308	274	7,209
(%)	0.3	0.2	0.1	3.9	0.2	0.1	0.1	3.2	0.1	0.1	0.0	0.0	0.5	0.0	87.5	3.8	100.0
Weathersfield	1	1	0	61	0	0	0	317	0	0	0	1	4	0	384	107	876
(%)	0.1	0.1	0.0	7.0	0.0	0.0	0.0	36.2	0.0	0.0	0.0	0.1	0.5	0.0	43.8	12.2	100.0
AREA TOTAL	260	21	10	601	37	11	438	635	11	9	7	6	330	29	11,257	836	14,498
(%)	1.8	0.1	0.1	4.1	0.3	0.1	3.0	4.4	0.1	0.1	0.0	0.0	2.3	0.2	77.6	5.8	100.0
ST ALBANS																	
ZIP TOWN	BRAT	CVMC	COPL	DHMC	FAHC	GIFF	GRAC	MT.A	NCTY	NEVT	NWST	PORT	RRMC	SWVT	SPRF	nonVT	TOTAL
Alburgh +	0	2	4	1	132	0	0	0	2	4	1,221	5	1	0	2	27	1,401
(%)	0.0	0.1	0.3	0.1	9.4	0.0	0.0	0.0	0.1	0.3	87.2	0.4	0.1	0.0	0.1	1.9	100.0
Bakersfield	0	1	7	0	20	0	0	0	0	0	220	0	0	0	0	3	251
(%)	0.0	0.4	2.8	0.0	8.0	0.0	0.0	0.0	0.0	0.0	87.6	0.0	0.0	0.0	0.0	1.2	100.0
Enosburgh +	0	7	45	1	143	1	0	0	22	4	2,173	2	2	0	0	29	2,429
(%)	0.0	0.3	1.9	0.0	5.9	0.0	0.0	0.0	0.9	0.2	89.5	0.1	0.1	0.0	0.0	1.2	100.0
Fairfield	0	2	2	4	59	1	0	0	2	1	691	3	2	0	0	9	776
(%)	0.0	0.3	0.3	0.5	7.6	0.1	0.0	0.0	0.3	0.1	89.0	0.4	0.3	0.0	0.0	1.2	100.0
Franklin	0	2	6	0	35	0	0	0	3	1	582	0	3	0	0	8	640
(%)	0.0	0.3	0.9	0.0	5.5	0.0	0.0	0.0	0.5	0.2	90.9	0.0	0.5	0.0	0.0	1.3	100.0

Table E11b
Patient Origin Report: ED Visits, Not Admitted
by Hospital Service Area and Ziptown, 2009
Number of Visits and Row Percents

ST ALBANS																	
ZIP TOWN	BRAT	CVMC	COPL	DHMC	FAHC	GIFF	GRAC	MT.A	NCTY	NEVT	NWST	PORT	RRMC	SWVT	SPRF	nonVT	TOTAL
Richford +	0	1	6	2	122	0	0	0	24	0	1,474	3	0	0	0	9	1,641
(%)	0.0	0.1	0.4	0.1	7.4	0.0	0.0	0.0	1.5	0.0	89.8	0.2	0.0	0.0	0.0	0.5	100.0
Sheldon	0	1	1	1	49	0	0	0	4	0	821	1	1	0	0	4	883
(%)	0.0	0.1	0.1	0.1	5.5	0.0	0.0	0.0	0.5	0.0	93.0	0.1	0.1	0.0	0.0	0.5	100.0
St. Albans +	8	16	6	7	739	4	0	0	8	7	9,466	12	14	0	2	64	10,353
(%)	0.1	0.2	0.1	0.1	7.1	0.0	0.0	0.0	0.1	0.1	91.4	0.1	0.1	0.0	0.0	0.6	100.0
Swanton +	0	9	8	2	362	4	0	0	6	2	5,320	8	6	0	1	33	5,761
(%)	0.0	0.2	0.1	0.0	6.3	0.1	0.0	0.0	0.1	0.0	92.3	0.1	0.1	0.0	0.0	0.6	100.0
AREA TOTAL	8	41	85	18	1,661	10	0	0	71	19	21,968	34	29	0	5	186	24,135
(%)	0.0	0.2	0.4	0.1	6.9	0.0	0.0	0.0	0.3	0.1	91.0	0.1	0.1	0.0	0.0	0.8	100.0
ST JOHNSBURY																	
ZIP TOWN	BRAT	CVMC	COPL	DHMC	FAHC	GIFF	GRAC	MT.A	NCTY	NEVT	NWST	PORT	RRMC	SWVT	SPRF	nonVT	TOTAL
Barnet	0	2	2	16	4	0	0	1	1	276	1	0	0	0	0	137	440
(%)	0.0	0.5	0.5	3.6	0.9	0.0	0.0	0.2	0.2	62.7	0.2	0.0	0.0	0.0	0.0	31.1	100.0
Burke +	1	13	4	33	10	1	0	0	26	897	0	0	1	0	2	1,096	2,084
(%)	0.0	0.6	0.2	1.6	0.5	0.0	0.0	0.0	1.2	43.0	0.0	0.0	0.0	0.0	0.1	52.6	100.0
Concord	1	5	0	11	3	0	0	0	6	422	1	0	0	0	0	163	612
(%)	0.2	0.8	0.0	1.8	0.5	0.0	0.0	0.0	1.0	69.0	0.2	0.0	0.0	0.0	0.0	26.6	100.0
Danville +	1	56	22	21	6	1	0	2	7	543	5	0	0	0	1	50	715
(%)	0.1	7.8	3.1	2.9	0.8	0.1	0.0	0.3	1.0	75.9	0.7	0.0	0.0	0.0	0.1	7.0	100.0
Lyndon +	2	18	7	46	19	2	0	1	20	2,155	3	0	3	1	2	125	2,404
(%)	0.1	0.7	0.3	1.9	0.8	0.1	0.0	0.0	0.8	89.6	0.1	0.0	0.1	0.0	0.1	5.2	100.0
Sheffield +	0	0	2	4	1	0	0	0	18	357	0	0	2	0	0	24	408
(%)	0.0	0.0	0.5	1.0	0.2	0.0	0.0	0.0	4.4	87.5	0.0	0.0	0.5	0.0	0.0	5.9	100.0

Table E11b
Patient Origin Report: ED Visits, Not Admitted
by Hospital Service Area and Ziptown, 2009
Number of Visits and Row Percents

ST JOHNSBURY

ZIP TOWN	BRAT	CVMC	COPL	DHMC	FAHC	GIFF	GRAC	MT.A	NCTY	NEVT	NWST	PORT	RRMC	SWVT	SPRF	nonVT	TOTAL
St. Johnsbury +	4	25	11	93	28	3	1	1	22	3,473	0	2	4	0	2	332	4,001
(%)	0.1	0.6	0.3	2.3	0.7	0.1	0.0	0.0	0.5	86.8	0.0	0.0	0.1	0.0	0.0	8.3	100.0
AREA TOTAL	9	119	48	224	71	7	1	5	100	8,123	10	2	10	1	7	1,927	10,664
(%)	0.1	1.1	0.5	2.1	0.7	0.1	0.0	0.0	0.9	76.2	0.1	0.0	0.1	0.0	0.1	18.1	100.0

WHITE RIVER JCT

ZIP TOWN	BRAT	CVMC	COPL	DHMC	FAHC	GIFF	GRAC	MT.A	NCTY	NEVT	NWST	PORT	RRMC	SWVT	SPRF	nonVT	TOTAL
Bradford	0	30	0	416	7	13	0	5	1	7	2	0	1	0	3	800	1,285
(%)	0.0	2.3	0.0	32.4	0.5	1.0	0.0	0.4	0.1	0.5	0.2	0.0	0.1	0.0	0.2	62.3	100.0
Bridgewater +	0	2	0	184	2	2	0	255	0	0	1	0	113	0	93	55	707
(%)	0.0	0.3	0.0	26.0	0.3	0.3	0.0	36.1	0.0	0.0	0.1	0.0	16.0	0.0	13.2	7.8	100.0
Corinth	0	88	0	219	4	15	0	5	1	3	0	0	0	0	2	218	555
(%)	0.0	15.9	0.0	39.5	0.7	2.7	0.0	0.9	0.2	0.5	0.0	0.0	0.0	0.0	0.4	39.3	100.0
Fairlee +	0	12	0	510	4	47	0	1	0	5	0	1	1	0	2	309	892
(%)	0.0	1.3	0.0	57.2	0.4	5.3	0.0	0.1	0.0	0.6	0.0	0.1	0.1	0.0	0.2	34.6	100.0
Groton +	0	60	2	50	4	1	0	2	1	92	2	0	0	0	0	544	758
(%)	0.0	7.9	0.3	6.6	0.5	0.1	0.0	0.3	0.1	12.1	0.3	0.0	0.0	0.0	0.0	71.8	100.0
Hartford +	7	11	3	2,941	17	26	0	131	1	6	2	5	18	2	26	1,786	4,982
(%)	0.1	0.2	0.1	59.0	0.3	0.5	0.0	2.6	0.0	0.1	0.0	0.1	0.4	0.0	0.5	35.8	100.0
Hartland	1	0	2	378	0	4	0	413	0	1	0	4	20	0	12	228	1,063
(%)	0.1	0.0	0.2	35.6	0.0	0.4	0.0	38.9	0.0	0.1	0.0	0.4	1.9	0.0	1.1	21.4	100.0
Newbury	0	15	0	130	2	0	0	5	1	24	0	0	0	1	1	1,127	1,306
(%)	0.0	1.1	0.0	10.0	0.2	0.0	0.0	0.4	0.1	1.8	0.0	0.0	0.0	0.1	0.1	86.3	100.0
Norwich	0	1	0	496	4	3	0	14	1	2	0	2	0	0	1	170	694
(%)	0.0	0.1	0.0	71.5	0.6	0.4	0.0	2.0	0.1	0.3	0.0	0.3	0.0	0.0	0.1	24.5	100.0

Table E11b
Patient Origin Report: ED Visits, Not Admitted
by Hospital Service Area and Ziptown, 2009
Number of Visits and Row Percents

WHITE RIVER JCT																	
ZIP TOWN	BRAT	CVMC	COPL	DHMC	FAHC	GIFF	GRAC	MT.A	NCTY	NEVT	NWST	PORT	RRMC	SWVT	SPRF	nonVT	TOTAL
Royalton	1	15	2	321	8	523	1	5	0	0	1	3	18	0	0	154	1,052
(%)	0.1	1.4	0.2	30.5	0.8	49.7	0.1	0.5	0.0	0.0	0.1	0.3	1.7	0.0	0.0	14.6	100.0
Ryegate	0	8	1	49	3	0	0	0	0	33	0	1	1	1	1	631	729
(%)	0.0	1.1	0.1	6.7	0.4	0.0	0.0	0.0	0.0	4.5	0.0	0.1	0.1	0.1	0.1	86.6	100.0
Sharon	1	3	0	235	1	85	0	7	0	0	0	1	4	0	0	130	467
(%)	0.2	0.6	0.0	50.3	0.2	18.2	0.0	1.5	0.0	0.0	0.0	0.2	0.9	0.0	0.0	27.8	100.0
Thetford +	4	7	0	633	1	27	0	11	2	2	0	0	3	0	3	376	1,069
(%)	0.4	0.7	0.0	59.2	0.1	2.5	0.0	1.0	0.2	0.2	0.0	0.0	0.3	0.0	0.3	35.2	100.0
Tunbridge	0	23	0	95	4	168	0	2	0	0	0	0	0	0	4	25	321
(%)	0.0	7.2	0.0	29.6	1.2	52.3	0.0	0.6	0.0	0.0	0.0	0.0	0.0	0.0	1.2	7.8	100.0
Windsor +	2	3	0	355	9	6	3	1,913	3	0	2	3	8	0	80	246	2,633
(%)	0.1	0.1	0.0	13.5	0.3	0.2	0.1	72.7	0.1	0.0	0.1	0.1	0.3	0.0	3.0	9.3	100.0
Woodstock	3	1	0	446	12	26	0	299	1	0	0	2	22	0	9	98	919
(%)	0.3	0.1	0.0	48.5	1.3	2.8	0.0	32.5	0.1	0.0	0.0	0.2	2.4	0.0	1.0	10.7	100.0
AREA TOTAL	19	279	10	7,458	82	946	4	3,068	12	175	10	22	209	4	237	6,897	19,432
(%)	0.1	1.4	0.1	38.4	0.4	4.9	0.0	15.8	0.1	0.9	0.1	0.1	1.1	0.0	1.2	35.5	100.0

Table E12
Utilization by Hospital Service Area and Clinical Classification Software (CCS) High Level Diagnosis Group
ED Visits Not Admitted: Crude and Age-Adjusted Rates, 2009

Hospital Service Area	ED Visits	ED Visits /1000 Population	Age_Adjusted Visits /1000 Population
ALL CATEGORIES			
Barre	28,363	429.1	434.3
Bennington	13,568	338.7	345.8
Brattleboro	10,934	346.9	354.3
Burlington	47,269	275.2	271.4
Middlebury	10,811	382.0	384.7
Morrisville	11,727	419.1	420.5
Newport	14,634	512.9	524.3
Randolph	5,558	384.1	389.6
Rutland	28,607	448.3	457.8
Springfield	14,498	514.2	530.6
St Albans	24,135	534.7	540.6
St Johnsbury	10,664	389.5	390.7
White River Jct	19,432	400.4	413.7
Totals	240,200	386.3	386.3
INFECTIOUS AND PARASITIC DISEASES			
Barre	590	8.9	9.1
Bennington	201	5.0	5.3
Brattleboro	101	3.2	3.4
Burlington	678	3.9	3.7
Middlebury	142	5.0	4.9
Morrisville	250	8.9	9.1
Newport	281	9.8	10.4
Randolph	148	10.2	10.8
Rutland	510	8.0	8.4
Springfield	272	9.6	10.2
St Albans	353	7.8	7.6
St Johnsbury	134	4.9	4.9
White River Jct	462	9.5	9.8
Totals	4,122	6.6	6.6

Table E12
Utilization by Hospital Service Area and Clinical Classification Software (CCS) High Level Diagnosis Group
ED Visits Not Admitted: Crude and Age-Adjusted Rates, 2009

Hospital Service Area	ED Visits	ED Visits /1000 Population	Age_Adjusted Visits /1000 Population
NEOPLASMS			
Barre	26	0.4	0.4
Bennington	12	0.3	0.3
Brattleboro	14	0.4	0.4
Burlington	48	0.3	0.3
Middlebury	12	0.4	0.4
Morrisville	13	0.5	0.4
Newport	27	0.9	0.9
Randolph	2	0.1	0.1
Rutland	20	0.3	0.3
Springfield	14	0.5	0.4
St Albans	23	0.5	0.6
St Johnsbury	16	0.6	0.6
White River Jct	26	0.5	0.5
Totals	253	0.4	0.4
ENDOCRINE, NUTRITIONAL, METABOLIC & IMMUNITY DISORDERS			
Barre	284	4.3	4.3
Bennington	151	3.8	3.5
Brattleboro	193	6.1	5.9
Burlington	685	4.0	4.4
Middlebury	156	5.5	5.7
Morrisville	122	4.4	4.3
Newport	212	7.4	7.0
Randolph	71	4.9	4.8
Rutland	320	5.0	4.8
Springfield	172	6.1	5.9
St Albans	269	6.0	6.4
St Johnsbury	140	5.1	5.0
White River Jct	189	3.9	3.8
Totals	2,964	4.8	4.8

Table E12
Utilization by Hospital Service Area and Clinical Classification Software (CCS) High Level Diagnosis Group
ED Visits Not Admitted: Crude and Age-Adjusted Rates, 2009

Hospital Service Area	ED Visits	ED Visits /1000 Population	Age_Adjusted Visits /1000 Population
DISEASES OF THE BLOOD AND BLOOD-FORMING ORGANS			
Barre	24	0.4	0.4
Bennington	28	0.7	0.6
Brattleboro	13	0.4	0.4
Burlington	62	0.4	0.4
Middlebury	11	0.4	0.4
Morrisville	14	0.5	0.5
Newport	35	1.2	1.1
Randolph	7	0.5	0.5
Rutland	37	0.6	0.6
Springfield	42	1.5	1.3
St Albans	53	1.2	1.3
St Johnsbury	18	0.7	0.6
White River Jct	32	0.7	0.6
Totals	376	0.6	0.6
MENTAL DISORDERS			
Barre	944	14.3	14.6
Bennington	569	14.2	15.1
Brattleboro	662	21.0	21.6
Burlington	2,250	13.1	12.3
Middlebury	361	12.8	12.7
Morrisville	350	12.5	12.8
Newport	422	14.8	15.7
Randolph	185	12.8	13.0
Rutland	918	14.4	14.8
Springfield	543	19.3	20.9
St Albans	651	14.4	14.6
St Johnsbury	346	12.6	12.9
White River Jct	616	12.7	13.5
Totals	8,817	14.2	14.2

Table E12
Utilization by Hospital Service Area and Clinical Classification Software (CCS) High Level Diagnosis Group
ED Visits Not Admitted: Crude and Age-Adjusted Rates, 2009

Hospital Service Area	ED Visits	ED Visits /1000 Population	Age_Adjusted Visits /1000 Population
DISEASES OF THE NERVOUS SYSTEM AND SENSE ORGANS			
Barre	2,371	35.9	36.1
Bennington	1,107	27.6	28.7
Brattleboro	856	27.2	27.8
Burlington	3,746	21.8	21.4
Middlebury	937	33.1	33.6
Morrisville	853	30.5	30.3
Newport	1,226	43.0	44.0
Randolph	464	32.1	32.6
Rutland	2,945	46.1	47.4
Springfield	1,234	43.8	45.4
St Albans	2,145	47.5	47.0
St Johnsbury	951	34.7	34.7
White River Jct	1,640	33.8	34.9
Totals	20,475	32.9	32.9
DISEASES OF THE CIRCULATORY SYSTEM			
Barre	1,476	22.3	22.1
Bennington	1,134	28.3	26.3
Brattleboro	644	20.4	19.2
Burlington	2,773	16.1	18.0
Middlebury	826	29.2	30.2
Morrisville	582	20.8	19.7
Newport	892	31.3	29.3
Randolph	316	21.8	21.1
Rutland	1,644	25.8	24.4
Springfield	935	33.2	30.6
St Albans	1,237	27.4	29.1
St Johnsbury	726	26.5	25.9
White River Jct	1,105	22.8	21.9
Totals	14,290	23.0	23.0

Table E12
Utilization by Hospital Service Area and Clinical Classification Software (CCS) High Level Diagnosis Group
ED Visits Not Admitted: Crude and Age-Adjusted Rates, 2009

Hospital Service Area	ED Visits	ED Visits /1000 Population	Age_Adjusted Visits /1000 Population
DISEASES OF THE RESPIRATORY SYSTEM			
Barre	4,262	64.5	65.4
Bennington	1,505	37.6	38.0
Brattleboro	1,500	47.6	48.9
Burlington	5,112	29.8	29.4
Middlebury	1,440	50.9	51.4
Morrisville	1,685	60.2	60.3
Newport	2,397	84.0	85.5
Randolph	767	53.0	54.2
Rutland	3,882	60.8	62.9
Springfield	2,026	71.9	74.0
St Albans	3,431	76.0	76.7
St Johnsbury	1,562	57.0	57.0
White River Jct	2,788	57.4	59.3
Totals	32,357	52.0	52.0
DISEASES OF THE DIGESTIVE SYSTEM			
Barre	2,270	34.3	34.9
Bennington	951	23.7	24.8
Brattleboro	783	24.8	25.5
Burlington	3,218	18.7	18.4
Middlebury	796	28.1	28.5
Morrisville	909	32.5	32.3
Newport	1,021	35.8	36.9
Randolph	430	29.7	30.3
Rutland	2,109	33.0	34.0
Springfield	1,088	38.6	41.4
St Albans	1,825	40.4	40.7
St Johnsbury	884	32.3	32.6
White River Jct	1,415	29.2	30.9
Totals	17,699	28.5	28.5

Table E12
Utilization by Hospital Service Area and Clinical Classification Software (CCS) High Level Diagnosis Group
ED Visits Not Admitted: Crude and Age-Adjusted Rates, 2009

Hospital Service Area	ED Visits	ED Visits /1000 Population	Age_Adjusted Visits /1000 Population
DISEASES OF THE GENITOURINARY SYSTEM			
Barre	1,287	19.5	19.8
Bennington	766	19.1	19.5
Brattleboro	476	15.1	15.4
Burlington	2,299	13.4	13.1
Middlebury	449	15.9	15.6
Morrisville	569	20.3	20.5
Newport	786	27.5	28.1
Randolph	260	18.0	18.2
Rutland	1,325	20.8	21.0
Springfield	752	26.7	27.7
St Albans	1,230	27.2	28.2
St Johnsbury	699	25.5	25.7
White River Jct	868	17.9	18.5
Totals	11,766	18.9	18.9
* CONTRACEPTION & COMPLICATIONS OF PREGNANCY & CHILDBIRTH			
			Age-Adjusted Females
Barre	171	5.1	5.6
Bennington	115	5.6	6.3
Brattleboro	81	5.0	5.6
Burlington	668	7.6	6.5
Middlebury	72	5.1	4.7
Morrisville	116	8.2	8.2
Newport	144	10.1	12.5
Randolph	21	2.9	3.2
Rutland	200	6.1	6.7
Springfield	95	6.6	8.1
St Albans	144	6.3	6.8
St Johnsbury	81	5.9	6.5
White River Jct	88	3.6	4.3
Totals	1,996	6.3	6.3

Table E12
Utilization by Hospital Service Area and Clinical Classification Software (CCS) High Level Diagnosis Group
ED Visits Not Admitted: Crude and Age-Adjusted Rates, 2009

Hospital Service Area	ED Visits	ED Visits /1000 Population	Age_Adjusted Visits /1000 Population
DISEASES OF THE SKIN AND SUBCUTANEOUS TISSUE			
Barre	1,014	15.3	15.5
Bennington	398	9.9	10.2
Brattleboro	327	10.4	10.7
Burlington	1,389	8.1	7.9
Middlebury	313	11.1	11.1
Morrisville	318	11.4	11.3
Newport	567	19.9	20.2
Randolph	154	10.6	10.7
Rutland	889	13.9	14.3
Springfield	715	25.4	26.0
St Albans	911	20.2	20.4
St Johnsbury	300	11.0	11.0
White River Jct	744	15.3	15.7
Totals	8,039	12.9	12.9
MUSCULOSKELETAL SYSTEM AND CONNECTIVE TISSUE			
Barre	2,717	41.1	41.2
Bennington	1,009	25.2	25.9
Brattleboro	653	20.7	20.8
Burlington	2,807	16.3	16.7
Middlebury	788	27.8	28.4
Morrisville	748	26.7	26.6
Newport	1,161	40.7	41.3
Randolph	441	30.5	30.6
Rutland	1,878	29.4	29.6
Springfield	840	29.8	30.5
St Albans	1,780	39.4	40.1
St Johnsbury	701	25.6	25.7
White River Jct	1,777	36.6	37.2
Totals	17,300	27.8	27.8

Table E12
Utilization by Hospital Service Area and Clinical Classification Software (CCS) High Level Diagnosis Group
ED Visits Not Admitted: Crude and Age-Adjusted Rates, 2009

Hospital Service Area	ED Visits	ED Visits /1000 Population	Age_Adjusted Visits /1000 Population
CONGENITAL ANOMALIES			
Barre	5	0.1	0.1
Bennington	5	0.1	0.1
Brattleboro	3	0.1	0.1
Burlington	11	0.1	0.1
Middlebury	1	0.0	0.0
Morrisville	1	0.0	0.0
Newport	5	0.2	0.2
Randolph	4	0.3	0.3
Rutland	8	0.1	0.1
Springfield	4	0.1	0.1
St Albans	7	0.2	0.1
St Johnsbury	1	0.0	0.0
White River Jct	9	0.2	0.2
Totals	64	0.1	0.1
CONDITIONS ORIGINATING IN THE PERINATAL PERIOD			
Barre	28	0.4	0.4
Bennington	10	0.2	0.2
Brattleboro	10	0.3	0.4
Burlington	40	0.2	0.2
Middlebury	4	0.1	0.2
Morrisville	7	0.3	0.2
Newport	17	0.6	0.6
Randolph	14	1.0	1.0
Rutland	24	0.4	0.4
Springfield	4	0.1	0.1
St Albans	24	0.5	0.4
St Johnsbury	8	0.3	0.3
White River Jct	10	0.2	0.2
Totals	200	0.3	0.3

Table E12
Utilization by Hospital Service Area and Clinical Classification Software (CCS) High Level Diagnosis Group
ED Visits Not Admitted: Crude and Age-Adjusted Rates, 2009

Hospital Service Area	ED Visits	ED Visits /1000 Population	Age_Adjusted Visits /1000 Population
INJURY AND POISONING			
Barre	7,510	113.6	115.2
Bennington	3,984	99.4	102.7
Brattleboro	3,638	115.4	119.1
Burlington	15,049	87.6	84.8
Middlebury	3,124	110.4	110.1
Morrisville	3,970	141.9	144.5
Newport	3,841	134.6	139.6
Randolph	1,737	120.0	122.1
Rutland	8,609	134.9	138.5
Springfield	4,051	143.7	149.6
St Albans	7,046	156.1	156.3
St Johnsbury	2,806	102.5	103.3
White River Jct	5,255	108.3	113.0
Totals	70,620	113.6	113.6
SYMPTOMS, SIGNS, AND ILL-DEFINED CONDITIONS			
Barre	3,129	47.3	48.0
Bennington	1,514	37.8	38.7
Brattleboro	886	28.1	28.9
Burlington	6,095	35.5	34.7
Middlebury	1,301	46.0	46.3
Morrisville	1,143	40.9	40.7
Newport	1,454	51.0	52.7
Randolph	482	33.3	34.0
Rutland	3,094	48.5	49.9
Springfield	1,595	56.6	58.4
St Albans	2,836	62.8	63.6
St Johnsbury	1,198	43.8	44.0
White River Jct	2,023	41.7	43.3
Totals	26,750	43.0	43.0

Table E12
Utilization by Hospital Service Area and Clinical Classification Software (CCS) High Level Diagnosis Group
ED Visits Not Admitted: Crude and Age-Adjusted Rates, 2009

Hospital Service Area	ED Visits	ED Visits /1000 Population	Age_Adjusted Visits /1000 Population
RESIDUAL CODES, UNCLASSIFIED, ALL ECODES			
Barre	255	3.9	3.9
Bennington	109	2.7	2.5
Brattleboro	94	3.0	3.0
Burlington	339	2.0	2.2
Middlebury	78	2.8	2.8
Morrisville	77	2.8	2.6
Newport	146	5.1	4.9
Randolph	55	3.8	3.8
Rutland	195	3.1	2.9
Springfield	116	4.1	3.9
St Albans	170	3.8	4.0
St Johnsbury	93	3.4	3.3
White River Jct	385	7.9	8.2
Totals	2,112	3.4	3.4

Includes Vermont residents with ED visits not resulting in an inpatient stay in VT, NH, MA and NY hospitals.
27 ED visits that did not have any diagnosis codes are excluded from this analysis.

APPENDIX E1

Definitions and Formulae

Charges: Charges in this report are defined as hospital "facility" charges that are calculated by subtracting professional fees and patient convenience items charges from the total charge. However, facility charge data are not always reported according to the strict definition and some hospitals may have included salaried and contracted physician fees in their facility charges.

Clinical Classifications Software (CCS) Grouper: CCS was developed at the Agency for Healthcare Research and Quality (AHRQ) and is available at the website: <http://www.ahrq.gov/data/hcup/ccs.htm>. CCS collapses principal diagnosis and procedure codes into meaningful categories. The single-level diagnosis CCS aggregates illnesses and conditions into more than 260 categories. Similarly, the single-level procedure CCS aggregates procedures into 231 categories, most representing single types of procedures. High level CCS groups further collapse single-level CCS into broad groups based on body systems or condition categories.

Diagnosis: The condition, determined after study, that occasioned the patient's admission to the hospital. The accuracy or reliability of the diagnosis depends on several factors, including the physician's understanding of the problem and the recorder's ability to fit the condition to established coding conventions. For those cases with multiple problems, the primary diagnosis may not be the reason for surgery or cause of death.

Emergency Department (ED) Dataset: Consists of all records that had an associated revenue code beginning with 45 (Emergency Room).

Hospital Service Area (HSA): A group of Vermont ZipTowns (see definition of ZipTown on next page) based on each ZipTown's use of hospital resources. Starting in 2002, HSAs are based on inpatient discharges, where the diagnosis indicated the need for immediate care, for the years 1997-2001. In this fourth version of HSAs, ZipTowns were

assigned to HSAs based on a plurality rule. Prior definitions of HSAs have been based on all inpatient stays (except for newborns) and have used a strict decision rule for inclusion of ZipTowns in a hospital's service area. Use of a strict inclusion rule meant that there were always towns that were not assigned to any HSA and were labeled "contested." In this fourth version of HSAs, no towns are considered contested. See the Introduction for a map of HSAs and Appendix E3 for a list of towns and hospitals within HSAs.

Two HSAs contain more than one hospital: White River Junction (Dartmouth Hitchcock Medical Center, Mt. Ascutney Hospital, and the Veterans Administration Hospital) and Brattleboro (Brattleboro Memorial Hospital and Grace Cottage Hospital).

Population-based Rate: The rate of a population's use of hospital services. Rates in this report represent hospital ED visits per 1,000 population for the selected group.

The *crude rate* is calculated as follows:

$\text{Crude Rate per 1,000 People} = \frac{\text{Number of Discharges or Visits For the Selected Group}}{\text{Total Population for the Selected Group}} \times 1,000$

These rates depend upon the accuracy of both the numerator and the denominator population. Data on population-at-risk (the denominator in these rates) are based on estimates. Rates for small areas or for groups with small numerators should be used with caution.

Age-adjusted rates are particularly important for comparisons across areas because service areas have different population age mixes and age is a strong factor influencing hospitalization patterns. The age-adjusted rate for a given hospital service area is calculated by multiplying the area's age specific rate for each age group by the state population in that

age group, summing across age groups, and dividing the result by the total state population. This result is then multiplied by 1,000. The following age groups are used in this volume for the computation of age-adjusted rates: 0-4, 5-14, 15-24, 25-34, 35-44, 45-54, 55-64, 65-69, 70-74, 75-79, and 80+. In other publications, different standards, such as the projected year 2000 U.S. population, are used for age adjusting and different age groupings may also be used in the age adjusting process.

Principal Payer: The anticipated principal source of payment of the patient's hospital bill recorded by the hospital on each discharge record.

ZipTown Grouping: The combination of towns into groups with compatible town and Zip code boundaries to reconcile discrepancies between mailing address and town of residence. Towns are also grouped to achieve a minimum population of 1,000 persons in each ZipTown group. ZipTowns were updated in 1996, with minor adjustments in 2004. This volume reflects these changes.

APPENDIX E2
2009 Clinical Classifications Software (CCS) High-Level and Single-Level Diagnosis Categories

CCS High Level Diagnosis Group 1: Infectious and Parasitic Diseases

- 1 Tuberculosis
- 2 Septicemia (except in labor)
- 3 Bacterial infection, unspecified site
- 4 Mycoses
- 5 HIV infection
- 6 Hepatitis
- 7 Viral infection
- 8 Other infections, including parasitic
- 9 Sexually transmitted infections (not HIV or hepatitis)
- 10 Immunizations & screening for infectious disease

CCS High Level Diagnosis Group 2: Neoplasms

- 11 Cancer of head & neck
- 12 Cancer of esophagus
- 13 Cancer of stomach
- 14 Cancer of colon
- 15 Cancer of rectum & anus
- 16 Cancer of liver & intrahepatic bile duct
- 17 Cancer of pancreas
- 18 Cancer of other GI organs, peritoneum
- 19 Cancer of bronchus, lung
- 20 Cancer, other respiratory & intrathoracic
- 21 Cancer of bone & connective tissue
- 22 Melanomas of skin
- 23 Other non-epithelial cancer of skin
- 24 Cancer of breast
- 25 Cancer of uterus
- 26 Cancer of cervix
- 27 Cancer of ovary
- 28 Cancer of other female genital organs
- 29 Cancer of prostate
- 30 Cancer of testis
- 31 Cancer of other male genital organs
- 32 Cancer of bladder
- 33 Cancer of kidney & renal pelvis
- 34 Cancer of other urinary organs

- 35 Cancer of brain & nervous system
- 36 Cancer of thyroid
- 37 Hodgkin's disease
- 38 Non-Hodgkin's lymphoma
- 39 Leukemias
- 40 Multiple myeloma
- 41 Cancer, other & unspecified primary
- 42 Secondary malignancies
- 43 Malignant neoplasm without specification of site
- 44 Neoplasms of unspecified nature or uncertain behavior
- 45 Maintenance chemotherapy, radiotherapy
- 46 Benign neoplasm of uterus
- 47 Other & unspecified benign neoplasm

CCS High Level Diagnosis Group 3: Endocrine, Nutritional, Metabolic, and Immunity Disorders

- 48 Thyroid disorders
- 49 Diabetes mellitus without complication
- 50 Diabetes mellitus with complications
- 51 Other endocrine disorders
- 52 Nutritional deficiencies
- 53 Disorders of lipid metabolism
- 54 Gout & other crystal arthropathies
- 55 Fluid & electrolyte disorders
- 56 Cystic fibrosis
- 57 Immunity disorders
- 58 Other nutritional, endocrine & metabolic disorders

CCS High Level Diagnosis Group 4: Diseases of the Blood and Blood-Forming Organs

- 59 Deficiency & other anemia
- 60 Acute posthemorrhagic anemia
- 61 Sickle cell anemia
- 62 Coagulation & hemorrhagic disorders
- 63 Diseases of white blood cells
- 64 Other hematologic conditions

APPENDIX E2
2009 Clinical Classifications Software (CCS) High-Level and Single-Level Diagnosis Categories

CCS High Level Diagnosis Group 5: Mental Disorders

- 650 MHA: Adjustment disorders
- 651 MHA: Anxiety disorders
- 652 MHA: Attention-deficit, conduct, and disruptive behavior disorders
- 653 MHA: Delirium, dementia, and amnestic and other cognitive disorders
- 654 MHA: Developmental disorders
- 655 MHA: Disorders usually diagnosed in infancy, childhood, or adolescence
- 656 MHA: Impulse control disorders, NEC
- 657 MHA: Mood disorders
- 658 MHA: Personality disorders
- 659 MHA: Schizophrenia and other psychotic disorders
- 660 MHA: Alcohol-related disorders
- 661 MHA: Substance-related disorders
- 662 MHA: Suicide and intentional self-inflicted injury
- 663 MHA: Screening and history of mental health and substance abuse codes
- 670 MHA: Miscellaneous mental disorders

CCS High Level Diagnosis Grp 6: Dis. of the Nervous System and Sense Organs

- 76 Meningitis (except that caused by tuberculosis or STD)
- 77 Encephalitis (except that caused by tuberculosis or STD)
- 78 Other CNS infection & poliomyelitis
- 79 Parkinson's disease
- 80 Multiple sclerosis
- 81 Other hereditary & degenerative nervous system conditions
- 82 Paralysis
- 83 Epilepsy, convulsions
- 84 Headache, including migraine
- 85 Coma, stupor & brain damage
- 86 Cataract
- 87 Retinal detachments, defects, vascular occlusion & retinopathy
- 88 Glaucoma
- 89 Blindness & vision defects
- 90 Inflammation, infection of eye (except that caused by tuberculosis or STD)
- 91 Other eye disorders
- 92 Otitis media & related conditions
- 93 Conditions associated with dizziness or vertigo
- 94 Other ear & sense organ disorders
- 95 Other nervous system disorders

CCS High Level Diagnosis Group 7: Diseases of the Circulatory System

- 96 Heart valve disorders
- 97 Peri-, endo- & myocarditis, cardiomyopathy (except that caused by tuberculosis or STD)
- 98 Essential hypertension
- 99 Hypertension with complications & secondary hypertension
- 100 Acute myocardial infarction
- 101 Coronary atherosclerosis & other heart disease
- 102 Nonspecific chest pain
- 103 Pulmonary heart disease
- 104 Other & ill-defined heart disease
- 105 Conduction disorders
- 106 Cardiac dysrhythmias
- 107 Cardiac arrest & ventricular fibrillation
- 108 Congestive heart failure, nonhypertensive
- 109 Acute cerebrovascular disease
- 110 Occlusion or stenosis of precerebral arteries
- 111 Other & ill-defined cerebrovascular disease
- 112 Transient cerebral ischemia
- 113 Late effects of cerebrovascular disease
- 114 Peripheral & visceral atherosclerosis
- 115 Aortic, peripheral & visceral artery aneurysms
- 116 Aortic & peripheral arterial embolism or thrombosis
- 117 Other circulatory disease
- 118 Phlebitis, thrombophlebitis & thromboembolism
- 119 Varicose veins of lower extremity
- 120 Hemorrhoids
- 121 Other diseases of veins & lymphatics

CCS High Level Diagnosis Group 8: Diseases of the Respiratory System

- 122 Pneumonia (except that caused by tuberculosis or STD)
- 123 Influenza
- 124 Acute & chronic tonsillitis
- 125 Acute bronchitis
- 126 Other upper respiratory infections
- 127 Chronic obstructive pulmonary disease & bronchiectasis
- 128 Asthma

APPENDIX E2
2009 Clinical Classifications Software (CCS) High-Level and Single-Level Diagnosis Categories

- 129 Aspiration pneumonitis, food/vomitus
- 130 Pleurisy, pneumothorax, pulmonary collapse
- 131 Respiratory failure, insufficiency, arrest (adult)
- 132 Lung disease due to external agents
- 133 Other lower respiratory disease
- 134 Other upper respiratory disease

CCS High Level Diagnosis Group 9: Diseases of the Digestive System

- 135 Intestinal infection
- 136 Disorders of teeth & jaw
- 137 Diseases of mouth, excluding dental
- 138 Esophageal disorders
- 139 Gastroduodenal ulcer (except hemorrhage)
- 140 Gastritis & duodenitis
- 141 Other disorders of stomach & duodenum
- 142 Appendicitis & other appendiceal conditions
- 143 Abdominal hernia
- 144 Regional enteritis & ulcerative colitis
- 145 Intestinal obstruction without hernia
- 146 Diverticulosis & diverticulitis
- 147 Anal & rectal conditions
- 148 Peritonitis & intestinal abscess
- 149 Biliary tract disease
- 150 Liver disease, alcohol-related
- 151 Other liver diseases
- 152 Pancreatic disorders (not diabetes)
- 153 Gastrointestinal hemorrhage
- 154 Noninfectious gastroenteritis
- 155 Other gastrointestinal disorders

CCS High Level Diagnosis Group 10: Diseases of the Genitourinary System

- 156 Nephritis, nephrosis, renal sclerosis
- 157 Acute & unspecified renal failure
- 158 Chronic renal failure
- 159 Urinary tract infections
- 160 Calculus of urinary tract
- 161 Other diseases of kidney & ureters

- 162 Other diseases of bladder & urethra
- 163 Genitourinary symptoms & ill-defined conditions
- 164 Hyperplasia of prostate
- 165 Inflammatory conditions of male genital organs
- 166 Other male genital disorders
- 167 Nonmalignant breast conditions
- 168 Inflammatory diseases of female pelvic organs
- 169 Endometriosis
- 170 Prolapse of female genital organs
- 171 Menstrual disorders
- 172 Ovarian cyst
- 173 Menopausal disorders
- 174 Female infertility
- 175 Other female genital disorders

CCS High Level Diagnosis Group 11: Contraception and Complications of Pregnancy and Childbirth

- 176 Contraceptive & procreative management
- 177 Spontaneous abortion
- 178 Induced abortion
- 179 Postabortion complications
- 180 Ectopic pregnancy
- 181 Other complications of pregnancy
- 182 Hemorrhage during pregnancy, abruptio placenta, placenta previa
- 183 Hypertension complicating pregnancy, childbirth & the puerperium
- 184 Early or threatened labor
- 185 Prolonged pregnancy
- 186 Diabetes or abnormal glucose tolerance complicating pregnancy, childbirth, or the puerperium
- 187 Malposition, malpresentation
- 188 Fetopelvic disproportion, obstruction
- 189 Previous C-section
- 190 Fetal distress & abnormal forces of labor
- 191 Polyhydramnios & other problems of amniotic cavity
- 192 Umbilical cord complication
- 193 Trauma to perineum & vulva
- 194 Forceps delivery

APPENDIX E2
2009 Clinical Classifications Software (CCS) High-Level and Single-Level Diagnosis Categories

- 195 Other complications of birth, puerperium affecting management of mother
- 196 Normal pregnancy and/or delivery

CCS High Level Diagnosis Group 12: Diseases of the Skin and Subcutaneous Tissue

- 197 Skin & subcutaneous tissue infections
- 198 Other inflammatory condition of skin
- 199 Chronic ulcer of skin
- 200 Other skin disorders

CCS High Level Diagnosis Group 13: Musculoskeletal System and Connective Tissue

- 201 Infective arthritis & osteomyelitis (except that caused by tuberculosis or sexually transmitted disease)
- 202 Rheumatoid arthritis & related disease
- 203 Osteoarthritis
- 204 Other non-traumatic joint disorders
- 205 Spondylosis, intervertebral disc disorders, other back problems
- 206 Osteoporosis
- 207 Pathological fracture
- 208 Acquired foot deformities
- 209 Other acquired deformities
- 210 Systemic lupus erythematosus & connective tissue disorders
- 211 Other connective tissue disease
- 212 Other bone disease & musculoskeletal deformities

CCS High Level Diagnosis Group 14: Congenital Anomalies

- 213 Cardiac & circulatory congenital anomalies
- 214 Digestive congenital anomalies
- 215 Genitourinary congenital anomalies
- 216 Nervous system congenital anomalies
- 217 Other congenital anomalies

CCS High Level Diagnosis Group 15: Conditions Originating in the Perinatal Period

- 218 Liveborn
- 219 Short gestation, low birth weight & fetal growth retardation

- 220 Intrauterine hypoxia & birth asphyxia
- 221 Respiratory distress syndrome
- 222 Hemolytic jaundice & perinatal jaundice
- 223 Birth trauma
- 224 Other perinatal conditions

CCS High Level Diagnosis Group 16: Injury and Poisoning

- 225 Joint disorders & dislocations, trauma-related
- 226 Fracture of neck of femur (hip)
- 227 Spinal cord injury
- 228 Skull & face fractures
- 229 Fracture of upper limb
- 230 Fracture of lower limb
- 231 Other fractures
- 232 Sprains & strains
- 233 Intracranial injury
- 234 Crushing injury or internal injury
- 235 Open wounds of head, neck & trunk
- 236 Open wounds of extremities
- 237 Complication of device, implant or graft
- 238 Complications of surgical procedures or medical care
- 239 Superficial injury, contusion
- 240 Burns
- 241 Poisoning by psychotropic agents
- 242 Poisoning by other medications & drugs
- 243 Poisoning by nonmedicinal substances
- 244 Other injuries & conditions due to external causes

CCS High Level Diagnosis Group 17: Symptoms, Signs and Ill-Defined Conditions

- 245 Syncope
- 246 Fever of unknown origin
- 247 Lymphadenitis
- 248 Gangrene
- 249 Shock
- 250 Nausea & vomiting
- 251 Abdominal pain

APPENDIX E2
2009 Clinical Classifications Software (CCS) High-Level and Single-Level Diagnosis Categories

252 Malaise & fatigue
253 Allergic reactions
254 Rehabilitation care, fitting of prostheses & adjustment of devices
255 Administrative/social admission
256 Medical examination/evaluation
257 Other aftercare
258 Other screening for suspected conditions (not mental disorders or infectious disease)

**CCS High Level Diagnosis Group 18: Residual Codes, Unclassified, All
E codes (External Cause Codes)**

259 Residual codes; unclassified
2601 E codes: Cut/pierce
2602 E codes: Drowning/submersion
2603 E codes: Fall
2604 E codes: Fire/burn
2605 E codes: Firearm

2606 E codes: Machinery
2607 E codes: Motor vehicle traffic (MVT)
2608 E codes: Pedal cyclist; not MVT
2609 E codes: Pedestrian; not MVT
2610 E codes: Transport; not MVT
2611 E codes: Natural/environment
2612 E codes: Overexertion
2613 E codes: Poisoning
2614 E codes: Struck by; against
2615 E codes: Suffocation
2616 E codes: Adverse effects of medical care
2617 E codes: Adverse effects of medical drugs
2618 E codes: Other specified and classifiable
2619 E codes: Other specified; not elsewhere classified (NEC)
2620 E codes: Unspecified
2621 E codes: Place of occurrence

APPENDIX E3
Towns and Hospitals in Vermont Hospital Service Areas
Based on 1997-2001 Vermont Resident Immediate Care Inpatient Discharges

BARRE – Central Vermont Medical Center

Calais+	Montpelier+	Moretown	Waitsfield+	Williamstown+
Calais	Barre City	Northfield+	Fayston	Washington
Woodbury	Barre Town	Northfield	Waitsfield	Williamstown
Worcester	Berlin	Roxbury	Warren	
Marshfield+	East Montpelier	Plainfield	Waterbury+	
Cabot	Middlesex	Topsham	Bolton	
Marshfield	Montpelier		Duxbury	
	Orange		Waterbury	

BENNINGTON – Southwestern Vermont Medical Center

Arlington+	Bennington+	Dorset+	Manchester	Whitingham
Arlington	Bennington	Dorset	Readsboro+	Wilmington+
Sandgate	Glastenbury	Rupert	Readsboro	Searsburg
Sunderland	Pownal	Dover+	Stamford	Wilmington
	Shaftsbury	Dover		
	Woodford	Somerset		

BRATTLEBORO – Brattleboro Memorial Hospital, Grace Cottage Hospital

Brattleboro+	Jamaica+	Newfane+	Vernon
Brattleboro	Jamaica	Brookline	Westminster+
Dummerston	Stratton	Newfane	Putney
Guilford	Wardsboro	Townshend	Westminster
Halifax	Winhall	Windham	
Marlboro			

BURLINGTON – Fletcher Allen Health Care

Burlington	Fairfax	Huntington+	Milton	Westford
Cambridge+	Ferrisburgh	Buel's Gore	Monkton	Williston+
Cambridge	Grand Isle+	Huntington	Richmond	St. George
Fletcher	Grand Isle	Starksboro	Shelburne	Williston
Charlotte	North Hero	Jericho+	So. Burlington	Winooski
Colchester	Hinesburg	Jericho	South Hero	
Essex		Underhill		

+ Indicates an aggregated ZipTown group.

Use of Hospital Service Area definitions based on 1997-2001 immediate care inpatient discharges began in 2002.

Therefore, numbers reported here are not directly comparable to those published prior to 2002.

APPENDIX E3
Towns and Hospitals in Vermont Hospital Service Areas
Based on 1997-2001 Vermont Resident Immediate Care Inpatient Discharges

MIDDLEBURY – Porter Medical Center

Bridport	Middlebury+	New Haven	Vergennes+
Bristol+	Cornwall	Orwell	Addison
Bristol	Middlebury	Shoreham+	Panton
Lincoln	Ripton	Shoreham	Vergennes
	Salisbury	Whiting	Waltham
	Weybridge		

MORRISVILLE – Copley Hospital

Craftsbury	Hardwick+	Hyde Park	Morrisville+
Eden+	Greensboro	Johnson	Elmore
Belvidere	Hardwick		Morristown
Eden	Stannard		Wolcott
Waterville			Stowe

NEWPORT – North Country Hospital

Barton+	Canaan+	Irasburg+	Lowell +	Troy+
Barton	Averill	Albany	Lowell	Jay
Brownington	Avery's Gore	Irasburg	Westfield	Troy
Glover	Bloomfield	Island Pond+	Newport+	
Westmore	Brunswick	Brighton	Coventry	
	Canaan	Charleston	Derby	
	Lemington	Ferdinand	Holland	
	Norton	Lewis	Newport City	
	Warner's Grant	Morgan	Newport Town	
	Warren's Gore			

RANDOLPH – Gifford Medical Center

Bethel+	Chelsea	Randolph+	Rochester+
Barnard	Pittsfield+	Braintree	Granville
Bethel	Pittsfield	Randolph	Hancock
Brookfield	Stockbridge		Rochester

+ Indicates an aggregated ZipTown group.

Use of Hospital Service Area definitions based on 1997-2001 immediate care inpatient discharges began in 2002.

Therefore, numbers reported here are not directly comparable to those published prior to 2002.

APPENDIX E3
Towns and Hospitals in Vermont Hospital Service Areas
Based on 1997-2001 Vermont Resident Immediate Care Inpatient Discharges

RUTLAND – Rutland Regional Medical Center

Brandon+	Danby+	Mt. Holly	Rutland+	Wells+
Brandon	Danby	Pawlet	Killington	Middletown Spr.
Goshen	Mt. Tabor	Pittsford+	Mendon	Wells
Leicester	Fair Haven+	Chittenden	Rutland City	West Rutland+
Sudbury	Benson	Pittsford	Rutland Town	Ira
Clarendon+	Castleton	Poultney	Wallingford+	West Rutland
Clarendon	Fair Haven	Proctor	Tinmouth	
Shrewsbury	Hubbardton		Wallingford	
	West Haven			

SPRINGFIELD – Springfield Hospital

Cavendish	Chester+	Londonderry+	Ludlow
	Andover	Landgrove	Rockingham
	Athens	Londonderry	Springfield
	Baltimore	Peru	Weathersfield
	Chester	Weston	
	Grafton		

ST. ALBANS – Northwestern Medical Center

Alburgh+	Enosburgh+	Richford+	St. Albans+	Swanton+
Alburgh	Enosburgh	Berkshire	Georgia	Highgate
Isle La Motte	Montgomery	Richford	St. Albans City	Swanton
Bakersfield	Fairfield	Sheldon	St. Albans Town	
	Franklin			

ST. JOHNSBURY – Northeastern Vermont Regional Hospital

Barnet	Concord	Lyndon+	St. Johnsbury+
Burke+	Danville+	Kirby	St. Johnsbury
Burke	Danville	Lyndon	Waterford
East Haven	Walden	Wheelock	
Granby		Sheffield+	
Guildhall		Sheffield	
Lunenburg		Sutton	
Maidstone			
Newark			
Victory			

+ Indicates an aggregated ZipTown group.

Use of Hospital Service Area definitions based on 1997-2001 immediate care inpatient discharges began in 2002.

Therefore, numbers reported here are not directly comparable to those published prior to 2002.

APPENDIX E3
Towns and Hospitals in Vermont Hospital Service Areas
Based on 1997-2001 Vermont Resident Immediate Care Inpatient Discharges

WHITE RIVER JUNCTION – Dartmouth Hitchcock Medical Center, Mt. Ascutney Hospital and Health Center, and the Veterans Administration Medical Center

Bradford	Fairlee+	Hartford+	Ryegate	Windsor+
Bridgewater+	Fairlee	Hartford	Sharon	West Windsor
Bridgewater	Vershire	Pomfret	Thetford+	Windsor
Plymouth	West Fairlee	Hartland	Strafford	Woodstock
Reading	Groton+	Newbury	Thetford	
Corinth	Groton	Norwich	Tunbridge	
	Peacham	Royalton		

+ Indicates an aggregated ZipTown group.

Use of Hospital Service Area definitions based on 1997-2001 immediate care inpatient discharges began in 2002.

Therefore, numbers reported here are not directly comparable to those published prior to 2002.

APPENDIX E4
Hospitals in this Report

Vermont Acute Care Hospitals
(Abbreviations are used in Tables E8 - E11)

Brattleboro Memorial Hospital
(BRAT)
17 Belmont Avenue
Brattleboro, Vermont 05301

Central Vermont Medical Center
(CVMC)
P.O. Box 547
Barre, Vermont 05641

Copley Hospital
(COPL)
528 Washington Highway
Morrisville, Vermont 05661

Fletcher Allen Health Care
(FAHC)
111 Colchester Avenue
Burlington, Vermont 05401

Gifford Medical Center
(GIFF)
44 Main Street, P.O. Box 2000
Randolph, Vermont 05060

Grace Cottage Hospital
(GRAC)
Route 35, P.O. Box 216
Townshend, Vermont 05353

Mt. Ascutney Hospital and Health Center
(MT.A)
289 County Road
Windsor, Vermont 05089

North Country Hospital
(NCTY)
189 Prouty Drive
Newport, Vermont 05855

Northeastern Vermont Regional Hospital
(NEVT)
1315 Hospital Drive, P.O. Box 905
St. Johnsbury, Vermont 05819

Northwestern Medical Center
(NWST)
133 Fairfield Street, P.O. Box 1370
St. Albans, Vermont 05478

Porter Medical Center
(PORT)
115 Porter Drive
Middlebury, Vermont 05753

Rutland Regional Medical Center
(RRMC)
160 Allen Street
Rutland, Vermont 05701

Southwestern Vermont Medical Center
(SWVT)
100 Hospital Drive East
Bennington, Vermont 05201

Springfield Hospital
(SPRF)
25 Ridgewood Road, P.O. Box 2003
Springfield, Vermont 05156

The Veterans Administration Medical
and Regional Office Center (V.A.)
215 North Main Street
White River Junction, Vermont 05009

**APPENDIX E4
Hospitals in this Report**

New Hampshire Hospitals
(Abbreviations are used in Tables E8 - E11)

Alice Peck Day Memorial Hospital (NH-Alice Day) Lebanon, New Hampshire	Exeter Hospital (NH-Exeter) Exeter, New Hampshire	Parkland Medical Center (NH-Parkland) Derry, New Hampshire
Androscoggin Valley Hospital (NH-Androscoggin) Berlin, New Hampshire	Franklin Regional Hospital (NH-Franklin) Franklin, New Hampshire	Portsmouth Regional Hospital (NH-Portsmouth) Portsmouth, New Hampshire
Catholic Medical Center (NH-Catholic) Manchester, New Hampshire	Frisbie Memorial Hospital (NH-Frisbie) Rochester, New Hampshire	Southern New Hampshire Medical Center (NH-Southern NH) Nashua, New Hampshire
Cheshire Medical Center (NH-Cheshire) Keene, New Hampshire	Huggins Hospital (NH-Huggins) Wolfeboro, New Hampshire	St. Joseph's Hospital (NH-St. Joseph's) Nashua, New Hampshire
Concord Hospital (NH-Concord) Concord, New Hampshire	Lakes Region General Hospital (NH-Lakes Region) Laconia, New Hampshire	Speare Memorial Hospital (NH-Speare) Plymouth, New Hampshire
Cottage Hospital (NH-Cottage) Woodsville, New Hampshire	Littleton Hospital (NH-Littleton) Littleton, New Hampshire	Upper Connecticut Valley Hospital (NH-Upper CT Val) Colebrook, New Hampshire
Dartmouth Hitchcock Medical Center (NH-Hitchcock) Lebanon, New Hampshire	Memorial Hospital (NH-Memorial) North Conway, New Hampshire	Valley Regional Hospital (NH-Valley Reg.) Claremont, New Hampshire
Dartmouth Hitchcock Psychiatric Unit* (NH-Hitch. Psych) Lebanon, New Hampshire	Monadnock Community Hospital (NH-Monadnock) Peterborough, New Hampshire	Weeks Medical Center Hospital (NH-Weeks) Lancaster, New Hampshire
Elliot Hospital (NH-Elliot) Manchester, New Hampshire	New London Hospital (NH-New London) New London, New Hampshire	Wentworth-Douglass Hospital (NH-Wntwth-Doug) Dover, New Hampshire

* Records from the Dartmouth Hitchcock Psychiatric Unit are combined with the Dartmouth Hitchcock Medical Center beginning 2008.

Massachusetts Hospitals Most Frequently Used by Vermont Residents

APPENDIX E4
Hospitals in this Report

(Abbreviations are used in Tables E8 - E11)

Baystate Medical Center
(MA-Baystate)
Springfield, Massachusetts

Berkshire Medical Center
(MA-Berkshire)
Pittsfield, Massachusetts

Beth Israel Deaconess Medical Center
(MA-Beth Israel)
Boston, Massachusetts

Brigham and Women's Hospital
(MA-Brigham)
Boston, Massachusetts

Children's Hospital Boston
(MA-Children's)
Boston, Massachusetts

Cooley Dickinson Hospital
(MA-Cooley Dicki)
Northampton, Massachusetts

Dana-Farber Cancer Institute
(MA-Dana Farber)
Boston, Massachusetts

Franklin Medical Center
(MA-Franklin Med)
Greenfield, Massachusetts

Hillcrest Hospital
(MA-Hillcrest)
Pittsfield, Massachusetts

Lahey Clinic Hospital
(MA-Lahey)
Burlington, Massachusetts

Massachusetts Eye and Ear Infirmary
(MA-MA Eye & Ear)
Boston, Massachusetts

Massachusetts General Hospital
(MA-MA General)
Boston, Massachusetts

New England Baptist Hospital
(MA-N.E. Baptist)
Boston, Massachusetts

Newton-Wellesley Hospital
(MA-Newton Wells)
Newton, Massachusetts

North Adams Regional Hospital
(MA-North Adams)
North Adams, Massachusetts

Northampton VA Medical Center
(MA-Northampton)
Northampton, Massachusetts

Tufts-New England Medical Center
(MA-N.E. Med Ctr)
Boston, Massachusetts

UMass Memorial Medical Center
(MA-U Mass)
Worcester, Massachusetts

VA Boston Healthcare—Boston Division
(MA-Boston VA)
Boston, Massachusetts

VA Boston Healthcare—Brockton Division
(MA-Brockton VA)
Brockton, Massachusetts

Massachusetts hospitals are grouped together in Table E10.

APPENDIX E4
Hospitals in this Report

New York Hospitals Most Frequently Used by Vermont Residents
(Abbreviations are used in Tables E8 - E11)

Albany Medical Center Hospital
(NY-Albany)
Albany, New York

Champlain Valley Physicians Hospital
Medical Center (NY-Champ Val)
Plattsburgh, New York

Columbia Presbyterian Medical Center
(NY-Presbyterian)
New York, New York

Glens Falls Hospital
(NY-Glens Falls)
Glens Falls, New York

Leonard Hospital
(NY-Leonard)
Troy, New York

Mary McClellan Hospital
(NY-McClellan)
Cambridge, New York

Memorial Hospital for Cancer and Allied
Disorders (NY-Hosp for CA)
New York, New York

Moses-Ludington Hospital
(NY-Moses-Luding)
Ticonderoga, New York

New York United Hospital Medical Center
(NY-United Med C.)
Port Chester, New York

New York Weill Cornell Medical Center
(NY-New York)
New York, New York

Phelps Memorial Hospital Center
(NY-Phelps)
Sleepy Hollow, New York

Samaritan Hospital
(NY-Samaritan)
Troy, New York

St. Peters Hospital
(NY-St Peters)
Albany, New York

New York hospitals are grouped
together in Table E10.