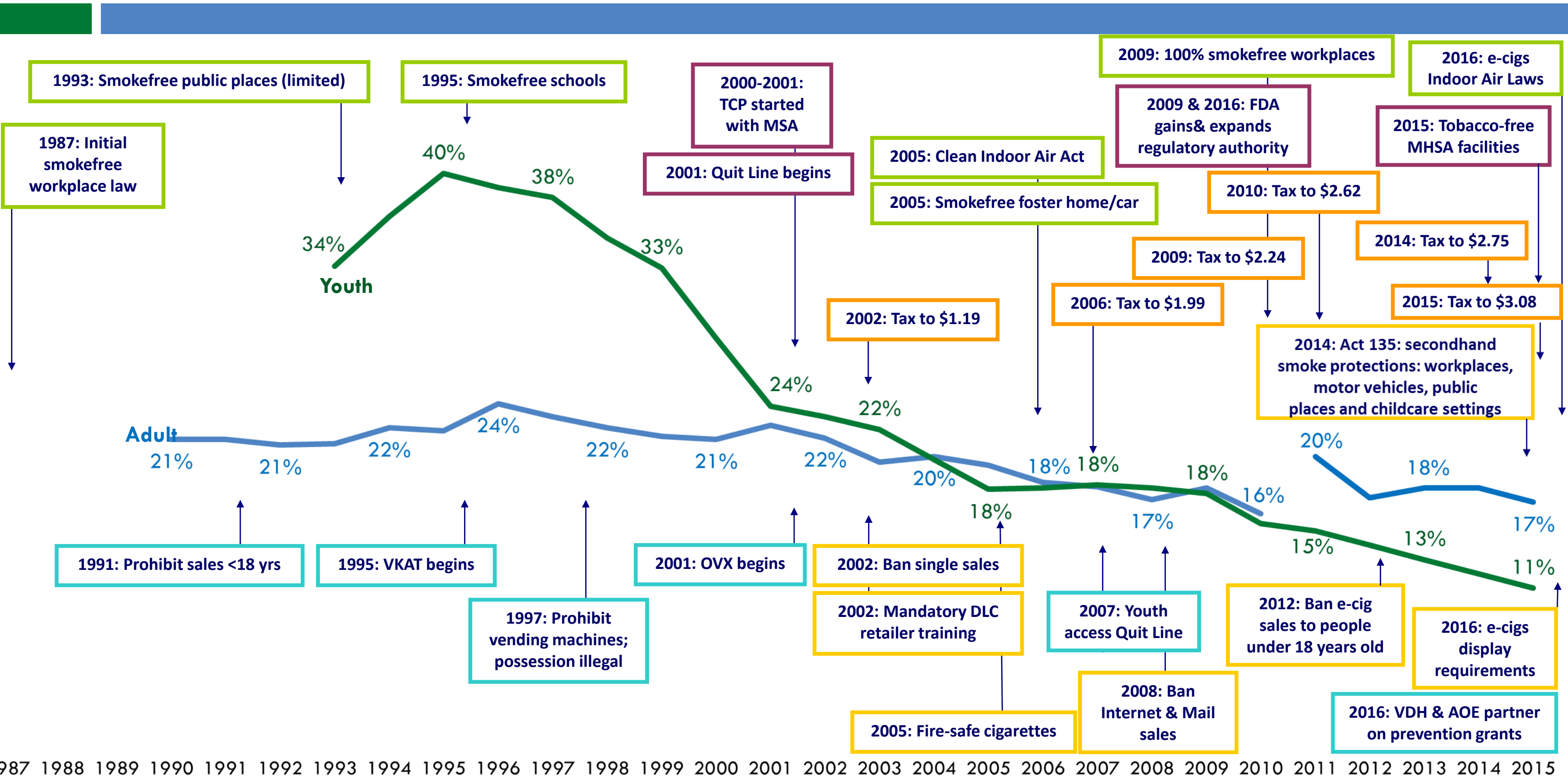


Tobacco Use Policy & Prevalence 1987 - 2016

GOVERNMENT	SECONDHAND SMOKE
SALES	YOUTH RELATED
	TAXES



1993: Smokefree public places (limited)

1995: Smokefree schools

2000-2001: TCP started with MSA

2009: 100% smokefree workplaces

2016: e-cigs Indoor Air Laws

1987: Initial smokefree workplace law

2001: Quit Line begins

2005: Clean Indoor Air Act

2009 & 2016: FDA gains & expands regulatory authority

2015: Tobacco-free MSHA facilities

Youth
34%
40%
38%
33%

2005: Smokefree foster home/car

2010: Tax to \$2.62

2014: Tax to \$2.75

Adult
21%
21%
22%
24%
22%
21%
22%
20%
18%
18%
18%
16%
20%
18%
17%
15%
13%
17%

2002: Tax to \$1.19

2006: Tax to \$1.99

2009: Tax to \$2.24

2015: Tax to \$3.08

2014: Act 135: secondhand smoke protections: workplaces, motor vehicles, public places and childcare settings

1991: Prohibit sales <18 yrs

1995: VKAT begins

2001: OVX begins

2002: Ban single sales

2007: Youth access Quit Line

2012: Ban e-cig sales to people under 18 years old

2016: e-cigs display requirements

1997: Prohibit vending machines; possession illegal

2002: Mandatory DLC retailer training

2008: Ban Internet & Mail sales

2016: VDH & AOE partner on prevention grants

2005: Fire-safe cigarettes