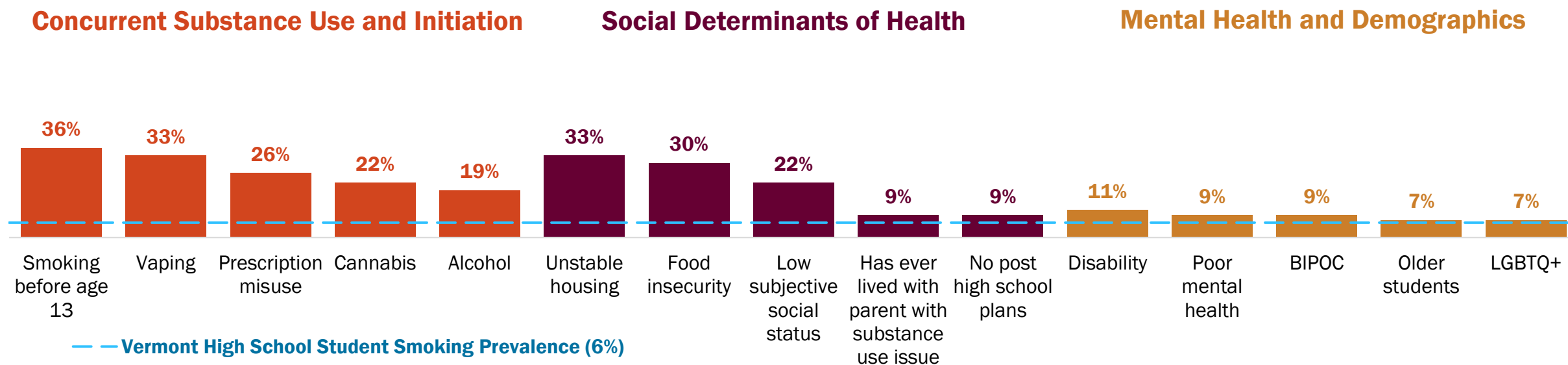


# High school students who smoked before age 13, vape, or experience unstable housing or food insecurity smoke cigarettes at the highest rates.

## Current Cigarette Smoking Rates (%), Vermont High School Student Populations Who Smoke at Statistically Higher Rates\*



**Graph interpretation:** Bars show smoking prevalence within each sub-population. *E.g.*, 36% of youth who tried smoking before age 13 currently smoke cigarettes while 11% of students with a disability currently smoke cigarettes.

\*Compared to Vermont high school students overall

Data source: Vermont High School Youth Risk Behavior Surveillance System (YRBS) 2023

Produced by the [Vermont Tobacco Control Program](#)

Vermont Department of Health

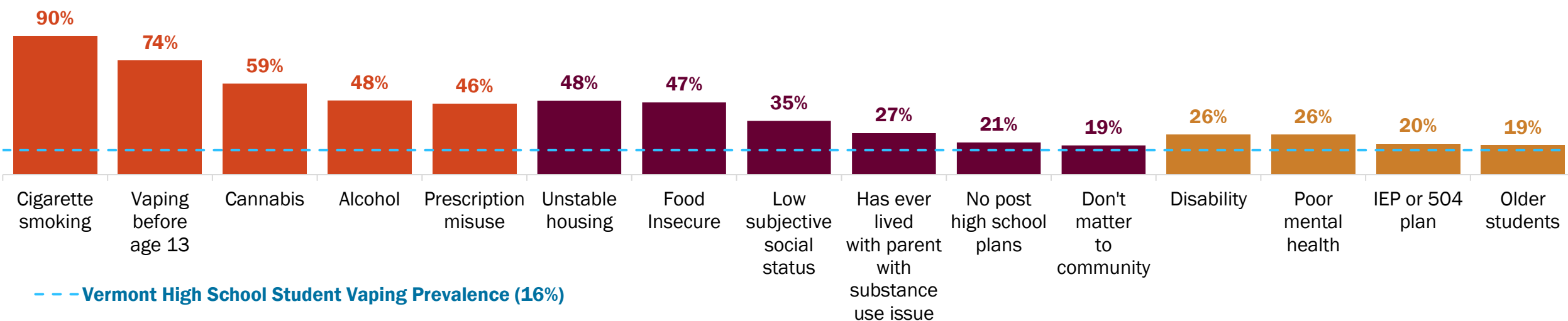
# The highest vaping rates in high school students are among those who currently smoke cigarettes, vaped before age 13, or use cannabis.

## Current Vaping Rates (%), Vermont High School Student Populations Who Vape at Statistically Higher Rates\*

### Concurrent Substance Use and Initiation

### Social Determinants of Health

### Mental Health and Demographics



**Graph interpretation:** Bars show vaping prevalence within each sub-population. *E.g.*, 90% of youth who currently smoke cigarettes also currently vape while 26% of students with poor mental health currently vape.

\*Compared to Vermont high school students overall

Data source: Vermont High School Youth Risk Behavior Surveillance System (YRBS) 2023

Produced by the [Vermont Tobacco Control Program](#)

Vermont Department of Health

# Data Notes

- **Vaping** refers to electronic vapor products used in the past 30 days including: e-cigarettes, vapes, vape pens, e-cigars, e-hookah pens and mods.
- **Prescription misuse** is ever taking prescription pain medicine without a doctor's prescription or differently than how a doctor told them to use it
- **Cigarette smoking, cannabis use, and alcohol use** are in the past 30 days.
- **Don't matter to community** refers to students who report believing that they do not matter to people in their community.
- **Subjective social status** is a proxy measure for socioeconomic status. It asks students to compare their family to others in the United States society by imagining a ladder. At the top of the ladder are people who are the best off – they have the most money, the highest amount of schooling, and jobs that bring the most money. At the bottom of the ladder are people who are the worst off – they have the least money, little or no education, no job or jobs that no one wants or respects.
- **Poor mental health** includes stress, anxiety and depression, and youth who felt their mental health was not good at least most of the time in the past 30 days.
- **Disability** includes those with a long-term health problem.
- **IEP or 504 Plan** are Individualized Education Plan or supports and services for students with disabilities.
- **BIPOC** includes Black, Indigenous, and people of color.
- **Older students** are those in 11<sup>th</sup> and 12<sup>th</sup> grades.
- **LGBTQ+** includes lesbian, gay, bisexual, transgender and other sexual orientations, or those questioning or unsure of their sexual orientation or gender identity.