

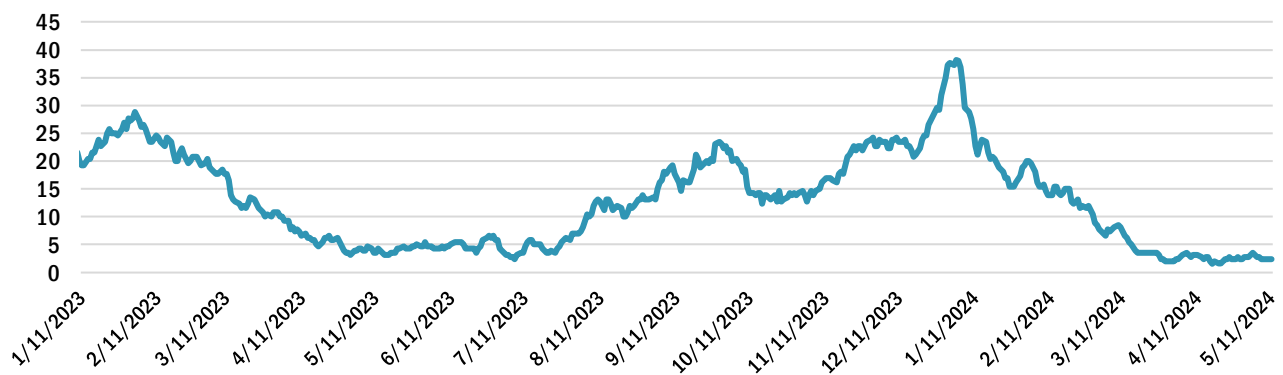
## Report Timeframe: May 5 to May 11, 2024

Current Vermont Department of Health recommendations on [Preventing COVID-19](https://healthvermont.gov/preventing-covid-19) ([healthvermont.gov](https://healthvermont.gov)).

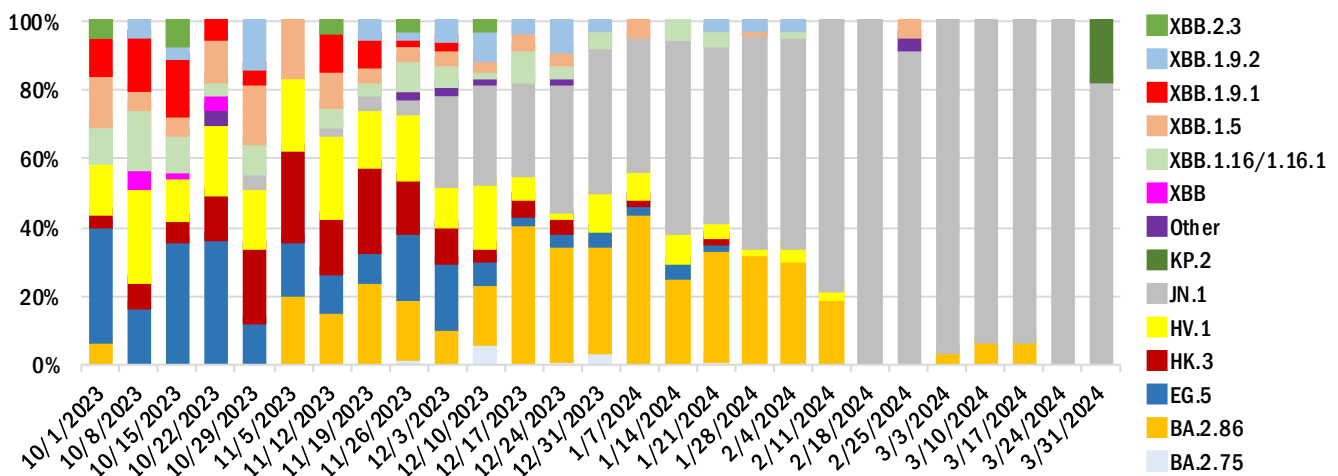
## Syndromic Surveillance

The Electronic Surveillance System for the Early Notification of Community-based Epidemics (ESSENCE) reflects all visits from participating emergency departments (ED). The chart below shows a rolling seven-day average of all ED visits in Vermont hospitals that include a COVID-19 diagnosis (emergency and non-emergency, in- and outpatient visits).

### Emergency Department Visits with COVID-19 Diagnosis Seven-Day Rolling Average, Vermont Hospitals



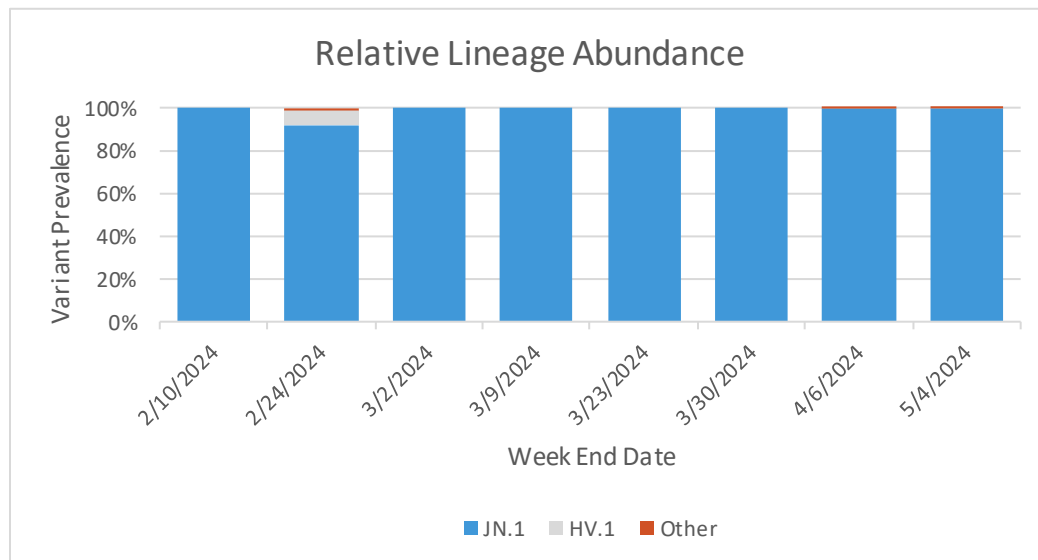
## Variant Proportions - Clinical Specimens



JN.1 is the dominant circulating variant. KP.2 was first detected during the week of 3/31/24. (Sources: LabCorp, Quest, Helix, Health Department Whole Genome Sequencing program.)

## Variant Proportions – Wastewater Monitoring

JN.1 is the dominant circulating variant.



Samples from two wastewater sites, Brattleboro and Ludlow, are sequenced to estimate the proportion of circulating variants.

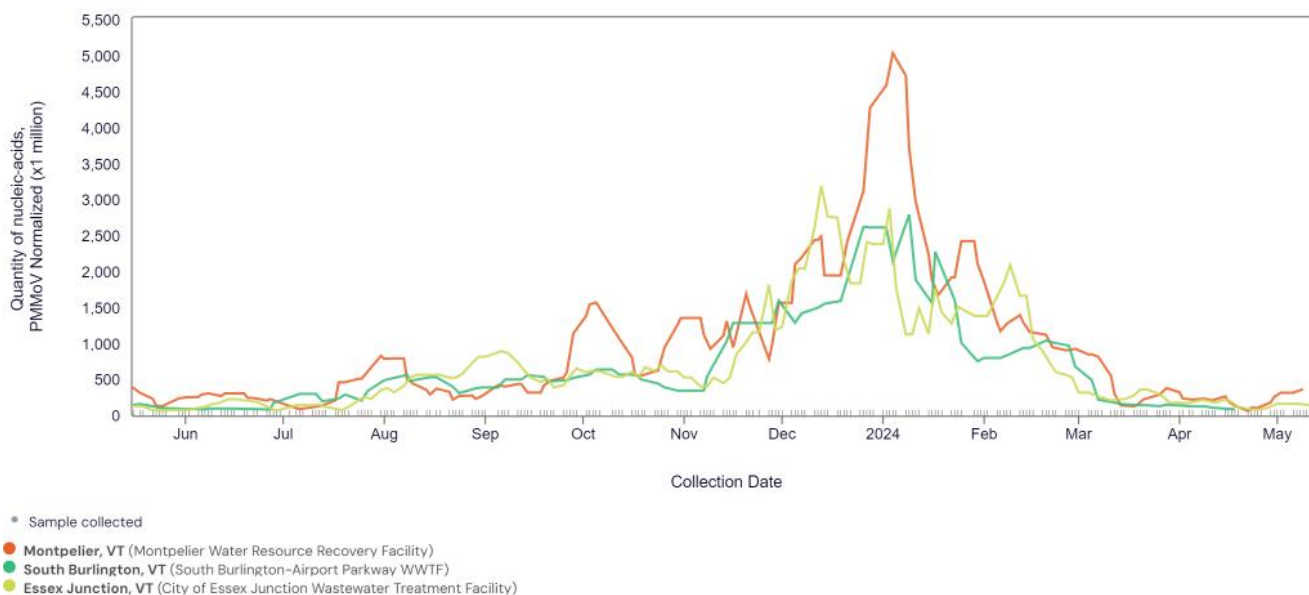
Source: Centers for Disease Control and Prevention [National Wastewater Surveillance System](#)

## Virus Concentrations and Trends – Wastewater Monitoring

Concentration levels are slightly elevated at some sites but generally remain low. Some week-to-week fluctuation is expected.

Montpelier, South Burlington and Essex Junction wastewater districts participate in [WastewaterSCAN](#). The graph below shows COVID-19 levels and trends over time in these districts.

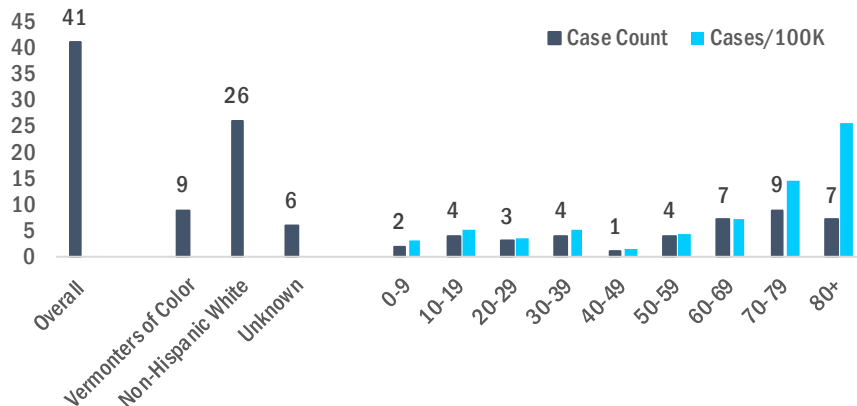
SARS-CoV-2, Vermont



Data for sites in Bennington, Chittenden, Franklin, and Windsor Counties are available on the [Biobot Analytics](#) website. Data for Burlington’s North and Main plants are available through [Burlington’s Wastewater Monitoring Report](#).

## Identified Cases

### Vermont Weekly Case Counts/Rates



Note: Case counts and rates are calculated by *confirmed* and *probable* cases reported to the Health Department.

To calculate rates, counts are divided by 2021 Vermont population estimates for the respective category and expressed per 100,000 in each category.

Due to a high number of cases missing race/ethnicity data, rates are not provided for race/ethnicity categories.

## COVID-19 Outbreaks Reported May 7 to May 13

For purposes of this report, an outbreak is defined as three or more epidemiologically linked cases of COVID-19, where at least one case has been laboratory or clinically confirmed as COVID-19.

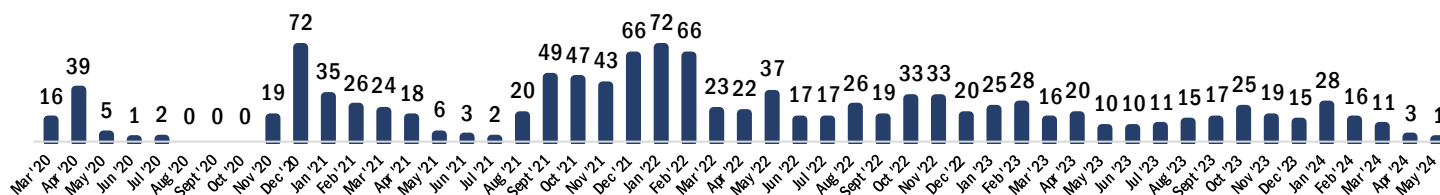
Facility type	New Outbreaks Reported 5/7 - 5/13
Long-term Care (LTC)	-
Non-LTC Healthcare	-
Correctional Facility	-
School/childcare	-
Other	-

County	New Outbreaks Reported 5/7 - 5/13
Addison	-
Bennington	-
Caledonia	-
Chittenden	-
Essex	-
Franklin	-
Grand Isle	-
Lamoille	-
Orange	-
Orleans	-
Rutland	-
Washington	-
Windham	-
Windsor	-

## Cumulative COVID-19 Deaths as of May 11, 2024

Total	Age group								
	Under 10	10-19	20-29	30-39	40-49	50-59	60-69	70-79	80+
1148	1	0	2	11	20	75	113	262	664

## Monthly COVID-19 Deaths



Note: Deaths are from registered death certificates and represent preliminary data. A change in death count may represent new deaths, corrections, or other updates.

Data Source: Vermont Department of Health Vital Statistics System.

For more information about this report, please contact [john.davy@vermont.gov](mailto:john.davy@vermont.gov)