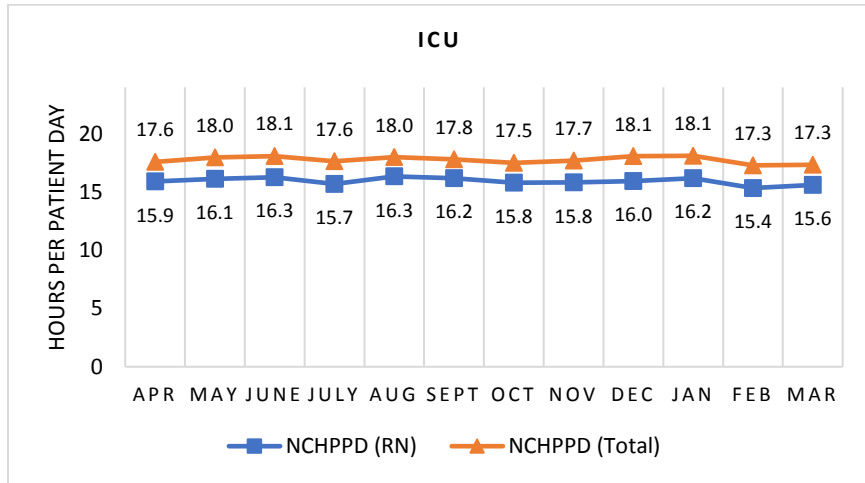


**UNIVERSITY OF VERMONT MEDICAL CENTER**  
**Intensive Care Unit (ICU)**

The Intensive Care Units have 46 licensed beds and care for patients of all ages. Types of services provided in this setting may include care of people with, or at risk of developing life-threatening problems.

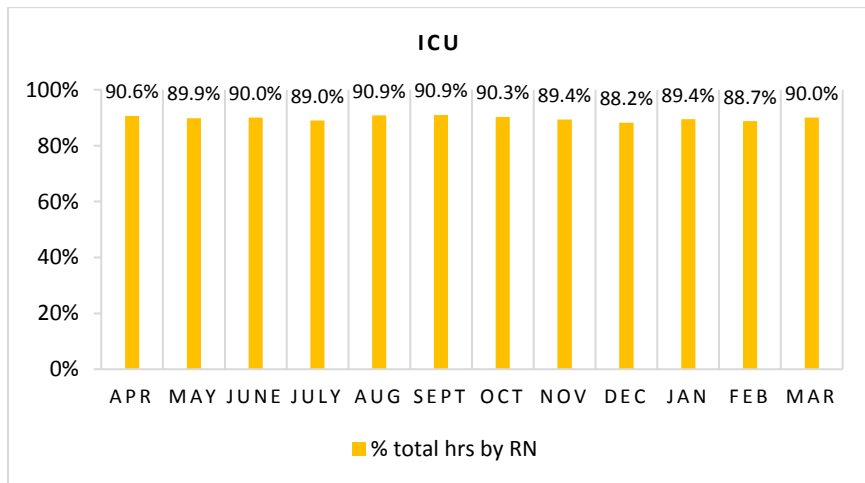
**Nursing Care Hours per Patient Day (NCHPPD): April 2018 - March 2019**

This graph shows the average number of direct nursing care hours provided per patient during a 24-hour period. Results are shown for care provided by registered nurses (RNs) and by all nursing staff (total) by month.



**Percent of Total Nursing Care Hours Provided by RNs: April 2018 - March 2019**

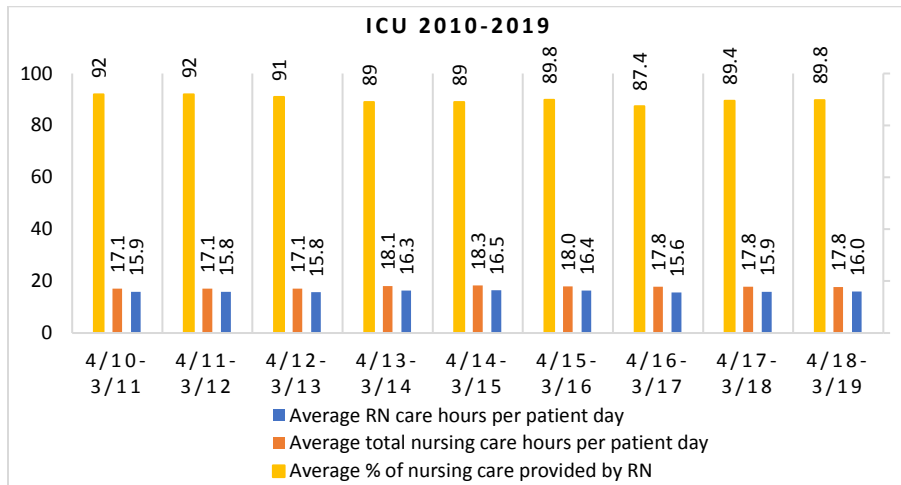
This graph shows the percentage of total nursing hours provided by RNs each month. Yearly average for this period is 89.8%.



## 2019 Nurse Staffing Data

### Yearly Average of RN and Total Nursing Care Hours per Patient Day, and Percent of Total Nursing Care Hours Provided by RNs, 2010 - 2019

The graph below shows trend over time on the average Nursing Care Hours by registered nurses (RNs) and Total (total) Nursing care hours per patient days, and average percentage of nursing care that was provided by RN.

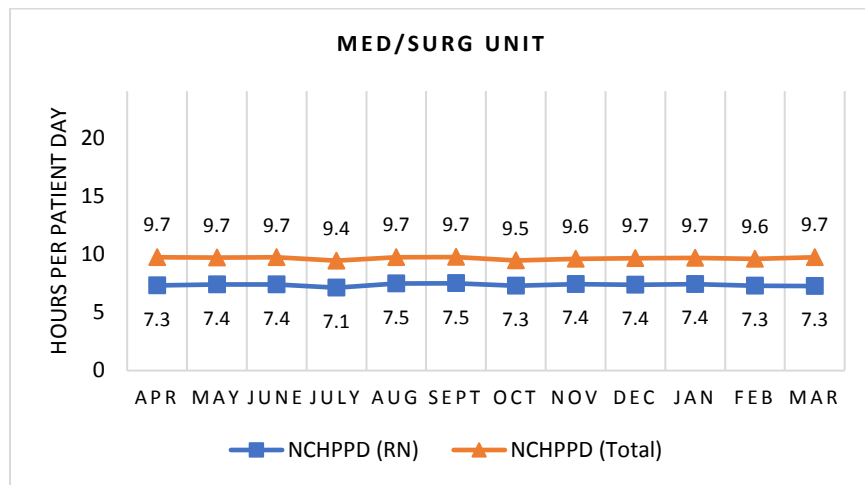


**UNIVERSITY OF VERMONT MEDICAL CENTER**  
**Medical/Surgical Unit**

The Adult Medical/Surgical Units have 273 licensed beds. Types of services provided in this setting include care of people with general medical and surgical problems, heart monitoring, end-of-life care, care of people with cancer, orthopedic care, and rehabilitative care.

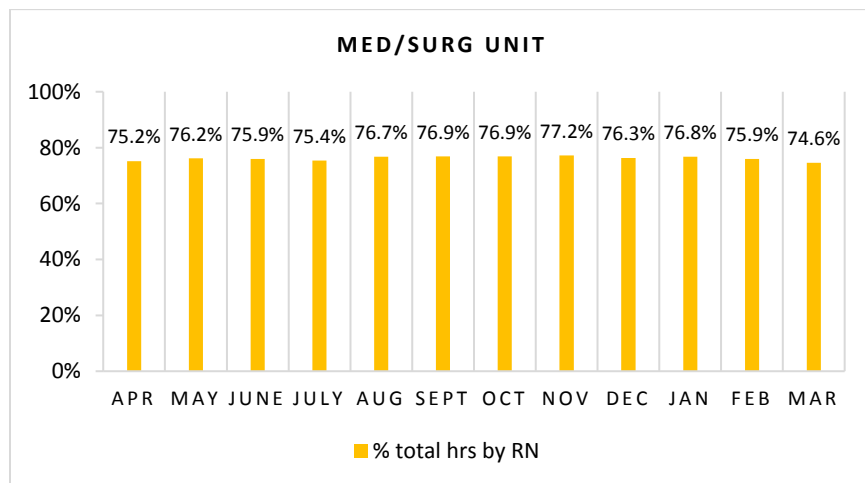
**Nursing Care Hours per Patient Day (NCHPPD): April 2018 - March 2019**

This graph shows the average number of direct nursing care hours provided per patient during a 24-hour period. Results are shown for care provided by registered nurses (RNs) and by all nursing staff (total) by month.



**Percent of Total Nursing Care Hours Provided by RNs: April 2018 - March 2019**

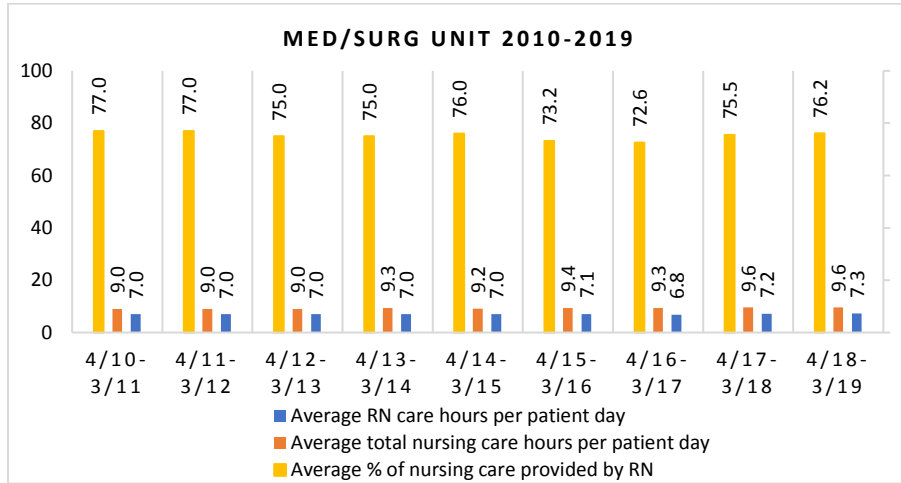
This graph shows the percentage of total nursing hours provided by RNs each month. Yearly average for this period is 76.2%.



## 2019 Nurse Staffing Data

### Yearly Average of RN and Total Nursing Care Hours per Patient Day, Percent of Total Nursing Care Hours Provided by RNs, 2010 - 2019

The graph below shows trend over time on the average RN and total nursing care hours per patient days, and average percentage of nursing care that was provided by RN.

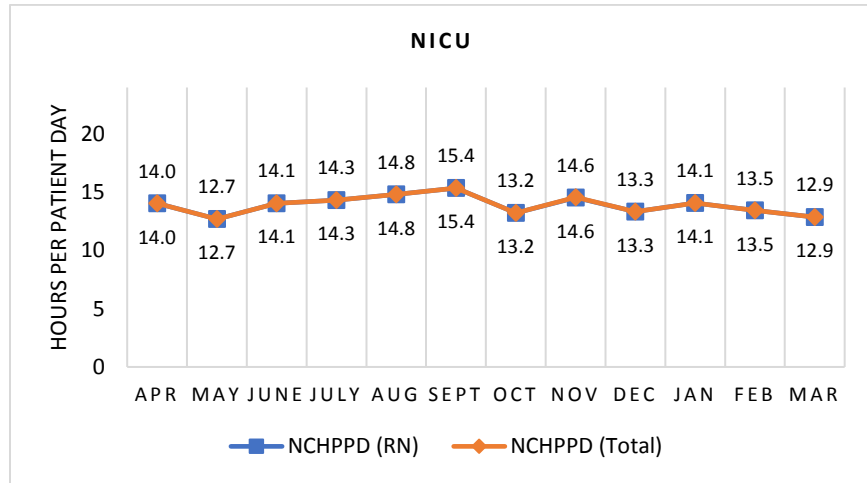


**UNIVERSITY OF VERMONT MEDICAL CENTER  
Neonatal Intensive Care Unit (NICU)**

The Neonatal Intensive Care Unit has 20 licensed beds and cares for premature and critically ill infants. This report does not include the Neonatal Transition Intermediate Care beds.

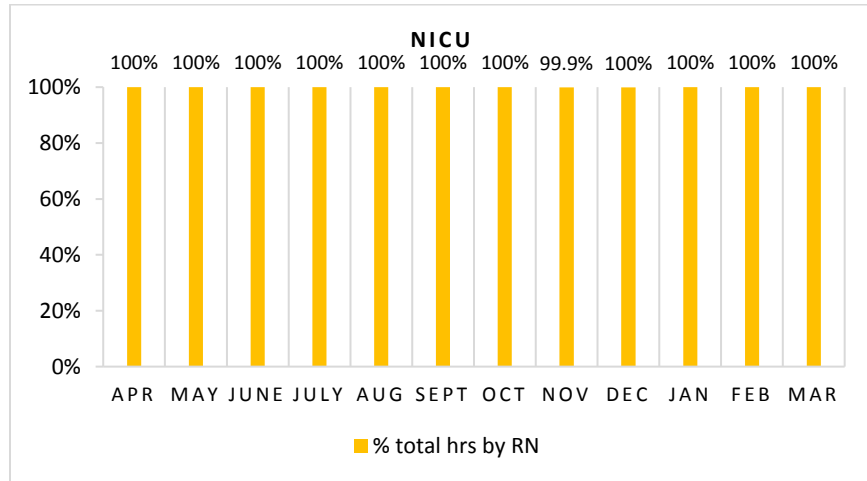
**Nursing Care Hours per Patient Day (NCHPPD): April 2018 - March 2019**

This graph shows the average number of direct nursing care hours provided per patient during a 24-hour period. Results are shown for care provided by registered nurses (RNs) and by all nursing staff (total) by month.



**Percent of Total Nursing Care Hours Provided by RNs: April 2018 - March 2019**

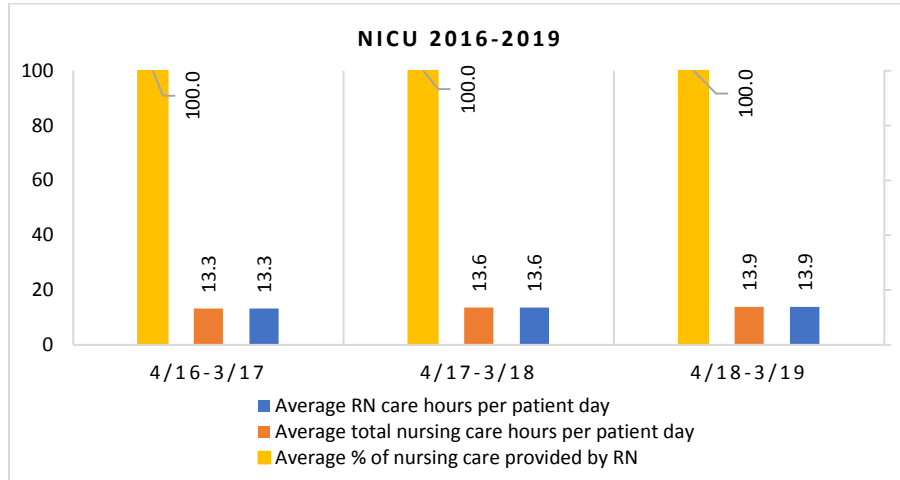
This graph shows the percentage of total nursing hours provided by RNs each month. Yearly average for this period is 100%.



## 2019 Nurse Staffing Data

### Yearly Average of RN and Total Nursing Care Hours per Patient Day, and Percent of Total Nursing Care Hours Provided by RNs, 2016 - 2019

The graph below shows trend over time on the average Nursing Care Hours by registered nurses (RNs) and Total (total) Nursing care hours per patient days, and average percentage of nursing care that was provided by RN.

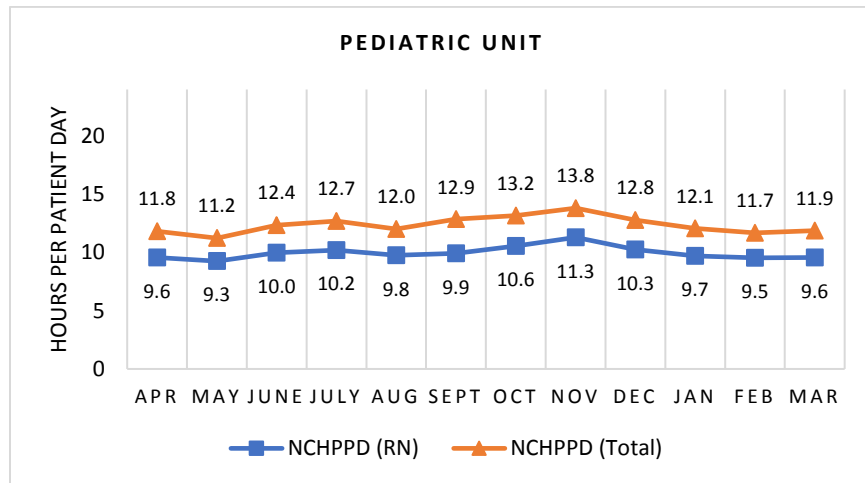


**UNIVERSITY OF VERMONT MEDICAL CENTER**  
**Pediatric Unit**

The Pediatric Unit has 20 licensed beds and provides medical-surgical care for children aged from infants to young adults with general illnesses or injuries.

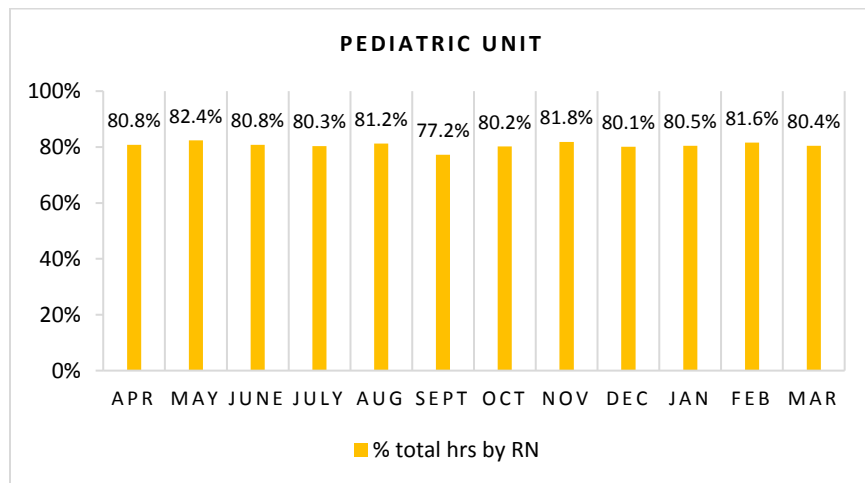
**Nursing Care Hours per Patient Day (NCHPPD): April 2018 - March 2019**

This graph shows the average number of direct nursing care hours provided per patient during a 24-hour period. Results are shown for care provided by registered nurses (RNs) and by all nursing staff (total) by month.



**Percent of Total Nursing Care Hours Provided by RNs: April 2018 - March 2019**

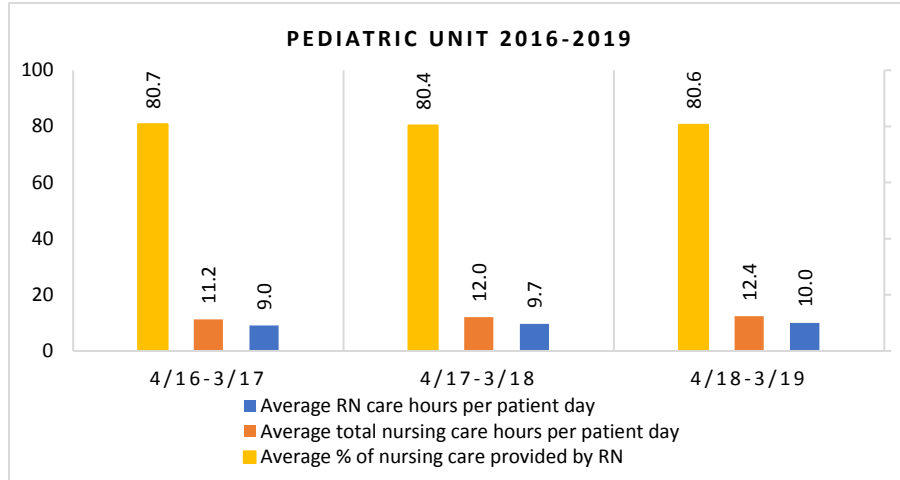
This graph shows the percentage of total nursing hours provided by RNs each month. Yearly average for this period is 80.6%.



## 2019 Nurse Staffing Data

### Yearly Average of RN and Total Nursing Care Hours per Patient Day, and Percent of Total Nursing Care Hours Provided by RNs, 2016 – 2019

The graph below shows trend over time on the average RN and total nursing care hours per patient days, and average percentage of nursing care that was provided by RN.



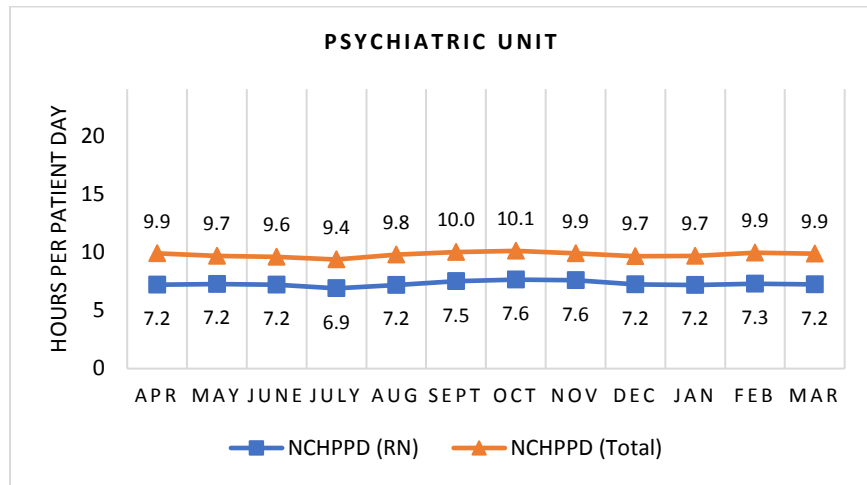


**UNIVERSITY OF VERMONT MEDICAL CENTER**  
**Inpatient Psychiatric Unit**

The Inpatient Psychiatric Unit has 28 licensed beds and cares for adult patients. Types of services provided in this setting include short-term, secure, inpatient care for individuals with a mental health diagnosis, substance abuse disorder, or both.

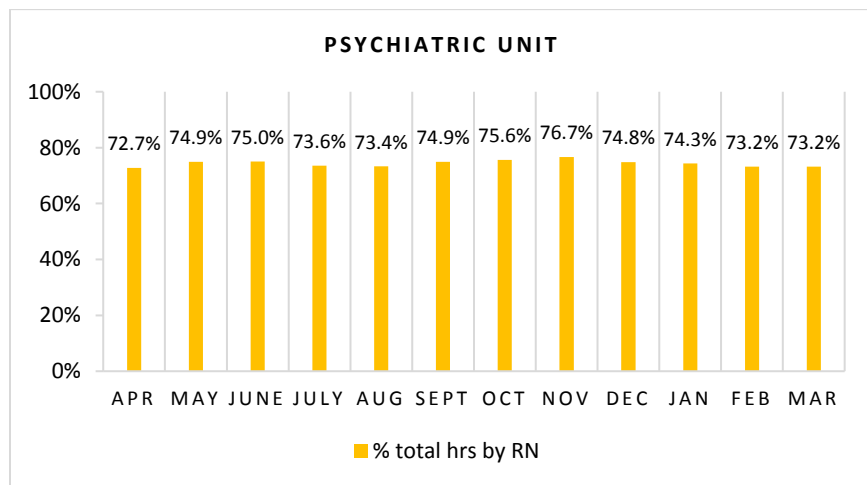
**Nursing Care Hours per Patient Day (NCHPPD): April 2018 - March 2019**

This graph shows the average number of direct nursing care hours provided per patient during a 24-hour period. Results are shown for care provided by registered nurses (RNs) and by all nursing staff (total) by month.



**Percent of Total Nursing Care Hours Provided by RNs: April 2018 - March 2019**

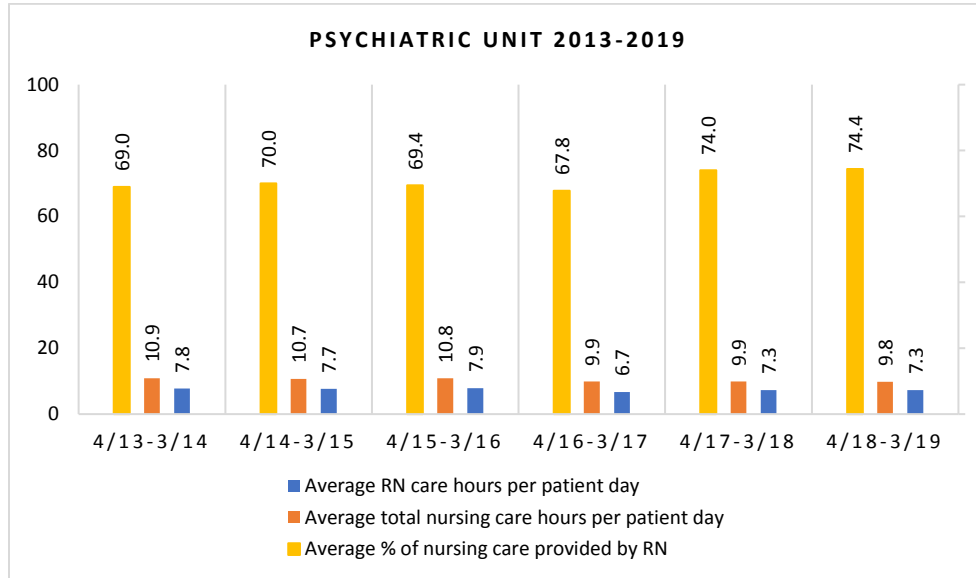
This graph shows the percentage of total nursing hours provided by RNs each month. Yearly average for this period is 74.4%.



## 2019 Nurse Staffing Data

### Yearly Average of RN and Total Nursing Care Hours per Patient Day, Percent of Total Nursing Care Hours Provided by RNs, 2013 - 2019

The graph below shows trend over time on the average RN and total nursing care hours per patient days, and average percentage of nursing care that was provided by RN.

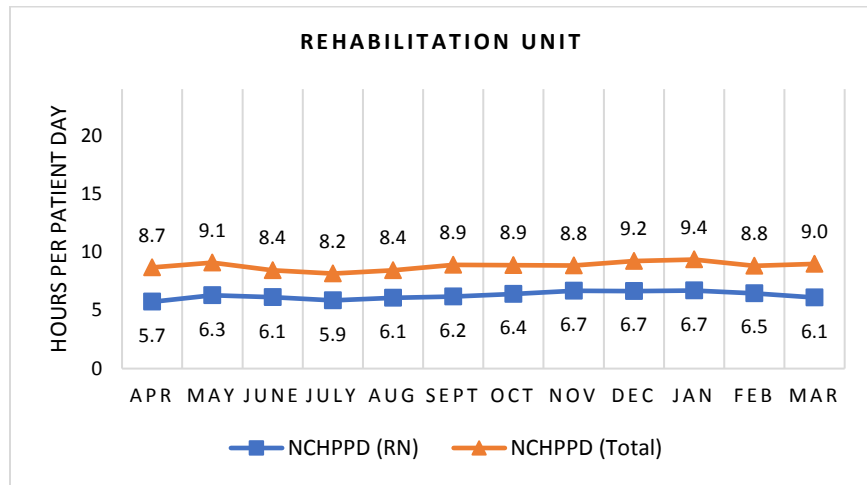


**UNIVERSITY OF VERMONT MEDICAL CENTER**  
**Inpatient Rehabilitation Unit**

The Inpatient Rehabilitation Unit has 35 licensed beds. It provides care for people who require 24-hour physician availability, 24-hour nursing care, and the skill of at least two different therapies, and can tolerate at least three hours of therapy for five days a week. Its focus is on helping people to achieve a level of independence to safely leave our acute care setting and continue his/her recovery at home or in some instances, at a subacute pace.

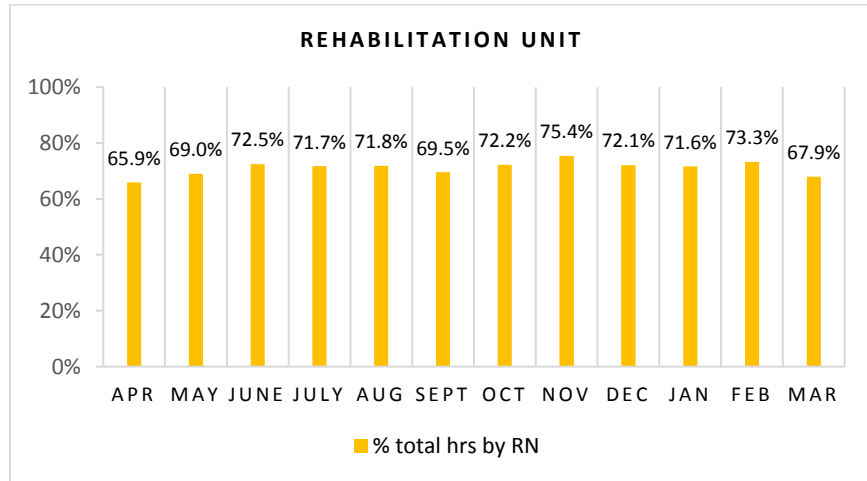
**Nursing Care Hours per Patient Day (NCHPPD): April 2018 - March 2019**

This graph shows the average number of direct nursing care hours provided per patient during a 24-hour period. Results are shown for care provided by registered nurses (RNs) and by all nursing staff (total) by month.



**Percent of Total Nursing Care Hours Provided by RNs: April 2018 - March 2019**

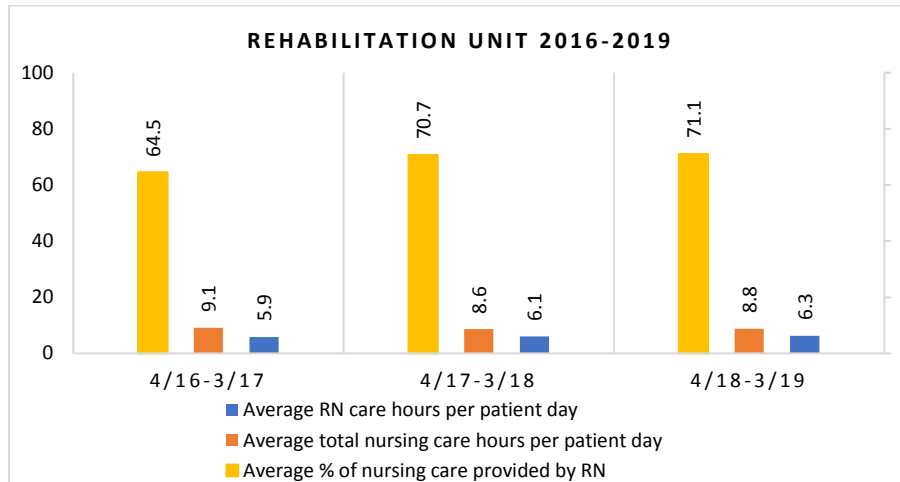
This graph shows the percentage of total nursing hours provided by RNs each month. Yearly average for this period is 71.1%.



## 2019 Nurse Staffing Data

### Yearly Average of RN and Total Nursing Care Hours per Patient Day, and Percent of Total Nursing Care Hours Provided by RNs, 2016 - 2019

The graph below shows trend over time on the average Nursing Care Hours by registered nurses (RNs) and Total (total) Nursing care hours per patient days, and average percentage of nursing care that was provided by RN.

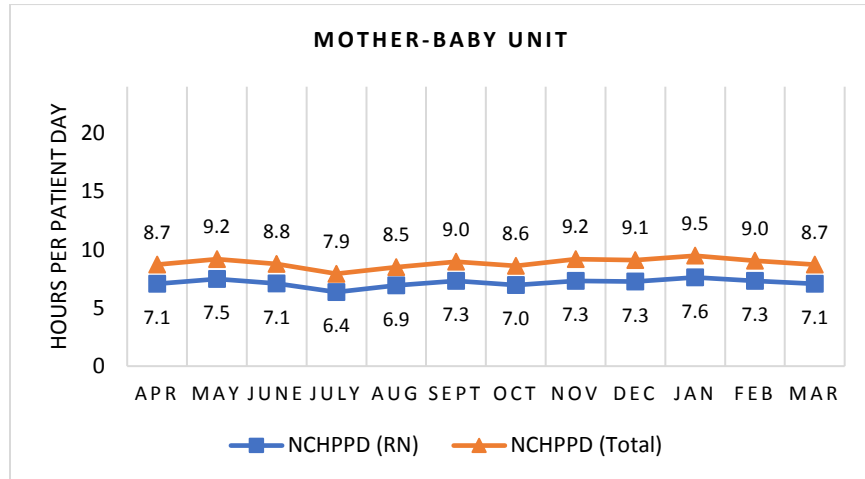


**UNIVERSITY OF VERMONT MEDICAL CENTER**  
**Mother-Baby Unit**

The Mother-Baby Unit has 28 licensed beds.

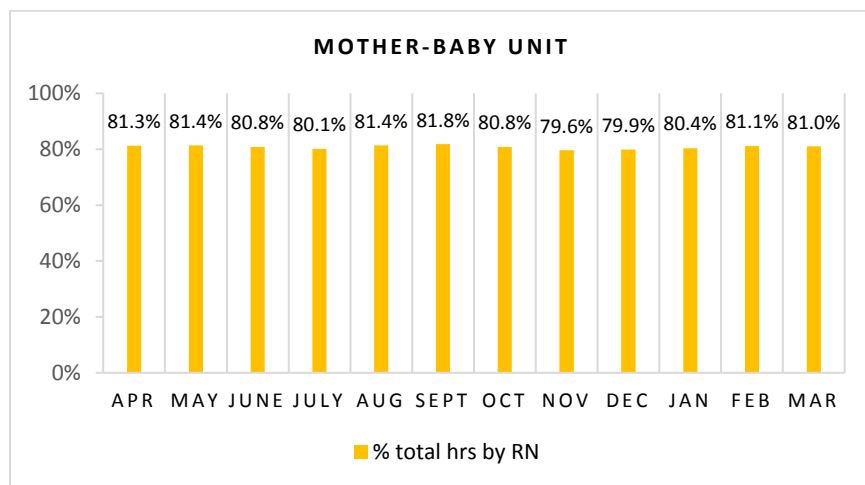
**Nursing Care Hours per Patient Day (NCHPPD): April 2018 - March 2019**

This graph shows the average number of direct nursing care hours provided per patient during a 24-hour period. Results are shown for care provided by registered nurses (RNs) and by all nursing staff (total) by month.



**Percent of Total Nursing Care Hours Provided by RNs: April 2018 - March 2019**

This graph shows the percentage of total nursing hours provided by RNs each month. Yearly average for this period is 80.8%.



## 2019 Nurse Staffing Data

### Yearly Average of RN and Total Nursing Care Hours per Patient Day, and Percent of Total Nursing Care Hours Provided by RNs, 2016 - 2019

The graph below shows trend over time on the average Nursing Care Hours by registered nurses (RNs) and Total (total) Nursing care hours per patient days, and average percentage of nursing care that was provided by RN.

