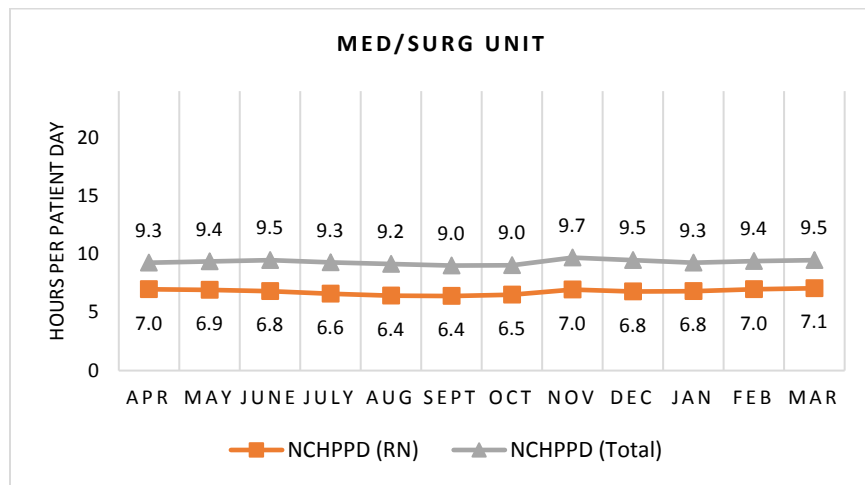


**UNIVERSITY OF VERMONT MEDICAL CENTER**  
**Medical/Surgical Unit**

The Adult Medical/Surgical Units have 228 licensed beds. Types of services provided in this setting include care of people with general medical and surgical problems, heart monitoring, end-of-life care, care of people with cancer, orthopedic care, and rehabilitative care.

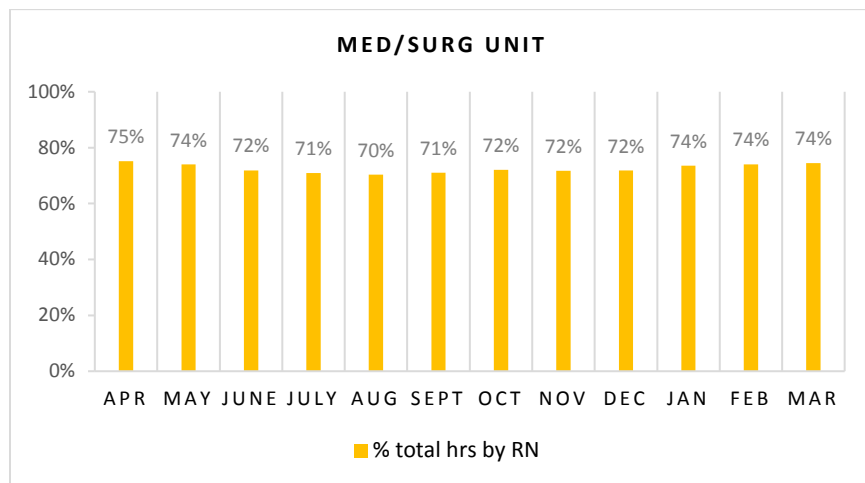
**Nursing Care Hours per Patient Day (NCHPPD): April 2016 - March 2017**

This graph shows the average number of direct nursing care hours provided per patient during a 24-hour period. Results are shown for care provided by registered nurses (RNs) and by all nursing staff (total) by month.



**Percent of Total Nursing Care Hours Provided by RNs: April 2016 - March 2017**

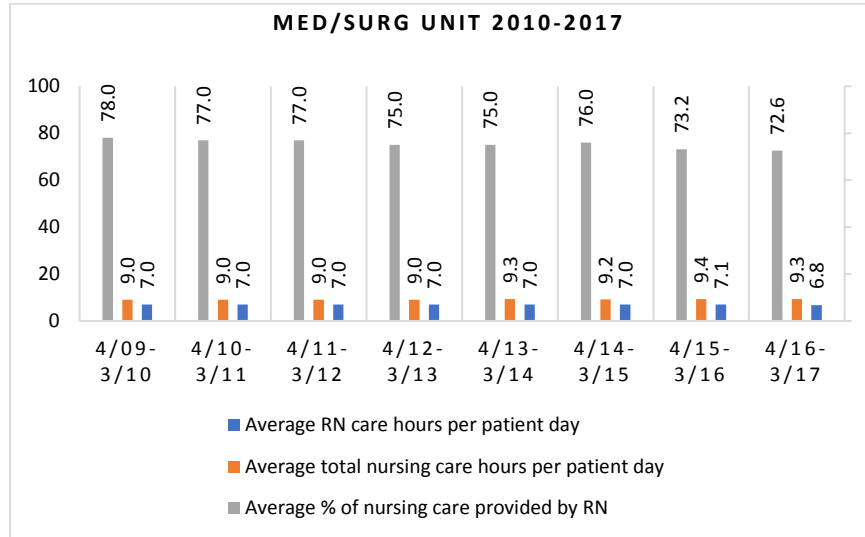
This graph shows the percentage of total nursing hours provided by RNs each month. Yearly average for this period is 72.6%.



## 2017 Nurse Staffing Data

### Yearly Average of RN and Total Nursing Care Hours per Patient Day, Percent of Total Nursing Care Hours Provided by RNs, 2010 - 2017

The graph below shows trend over time on the average RN and total nursing care hours per patient days, and average percentage of nursing care that was provided by RN.

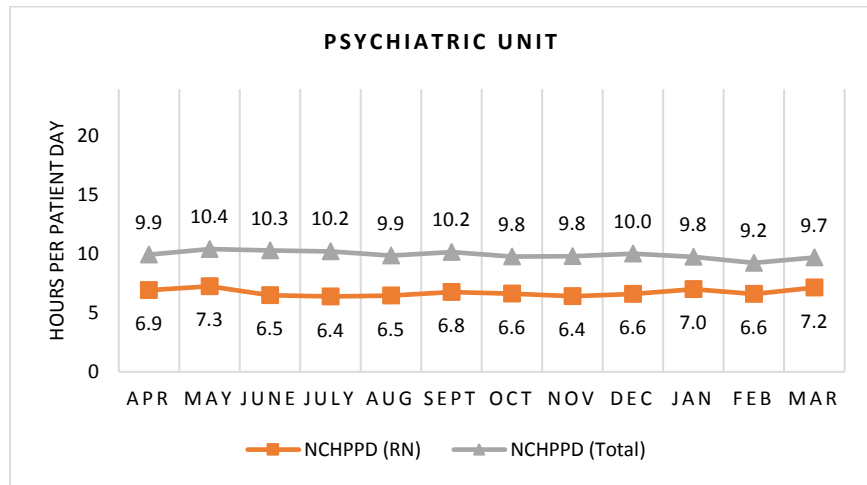


**UNIVERSITY OF VERMONT MEDICAL CENTER**  
**Inpatient Psychiatric Unit**

The Inpatient Psychiatric Unit has 28 licensed beds and cares for adult patients. Types of services provided in this setting include short-term, secure, inpatient care for individuals with a mental health diagnosis, substance abuse disorder, or both.

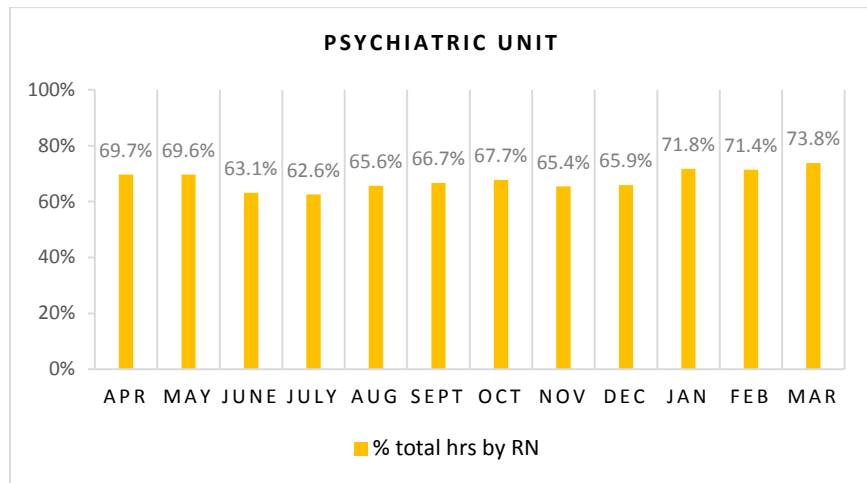
**Nursing Care Hours per Patient Day (NCHPPD): April 2016 - March 2017**

This graph shows the average number of direct nursing care hours provided per patient during a 24-hour period. Results are shown for care provided by registered nurses (RNs) and by all nursing staff (total) by month.



**Percent of Total Nursing Care Hours Provided by RNs: April 2016 - March 2017**

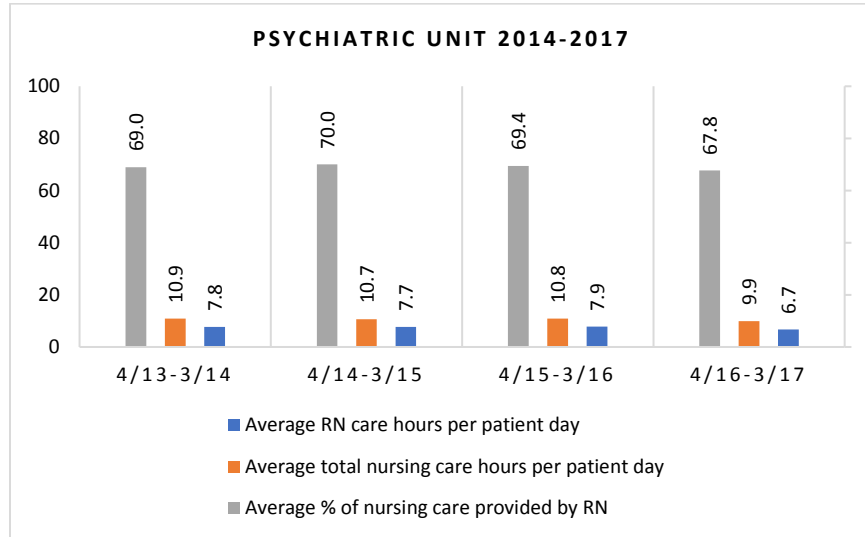
This graph shows the percentage of total nursing hours provided by RNs each month. Yearly average for this period is 67.8%.



## 2017 Nurse Staffing Data

### Yearly Average of RN and Total Nursing Care Hours per Patient Day, Percent of Total Nursing Care Hours Provided by RNs, 2014 - 2017

The graph below shows trend over time on the average RN and total nursing care hours per patient days, and average percentage of nursing care that was provided by RN.

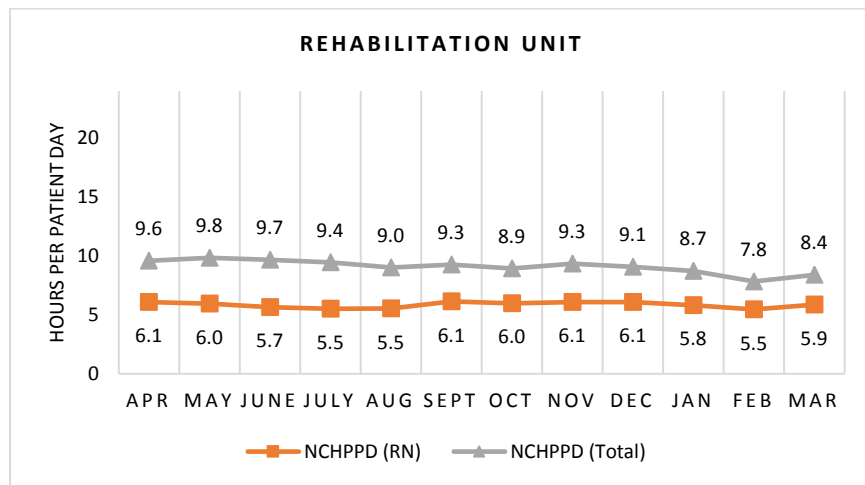


**UNIVERSITY OF VERMONT MEDICAL CENTER**  
**Inpatient Rehabilitation Unit**

The Inpatient Rehabilitation Unit has 35 licensed beds. It provides care for people who require 24-hour physician availability, 24-hour nursing care, and the skill of at least two different therapies, and can tolerate at least three hours of therapy for five days a week. Its focus is on helping people to achieve a level of independence to safely leave our acute care setting and continue his/her recovery at home or in some instances, at a subacute pace.

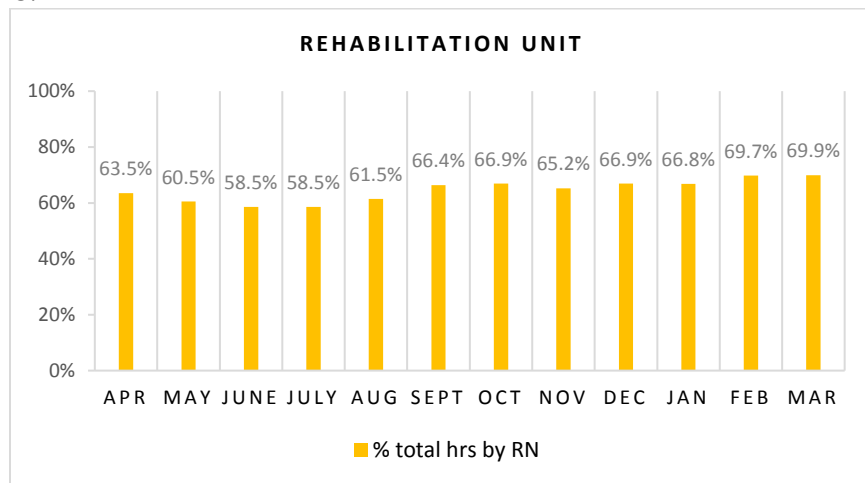
**Nursing Care Hours per Patient Day (NCHPPD): April 2016 - March 2017**

This graph shows the average number of direct nursing care hours provided per patient during a 24-hour period. Results are shown for care provided by registered nurses (RNs) and by all nursing staff (total) by month.



**Percent of Total Nursing Care Hours Provided by RNs: April 2016 - March 2017**

This graph shows the percentage of total nursing hours provided by RNs each month. Yearly average for this period is 64.5%.



**Trend on Yearly Average of RN and Total Nursing Care Hours per Patient Day, Percent of Total Nursing Care Hours Provided by RNs, are not available this year.**

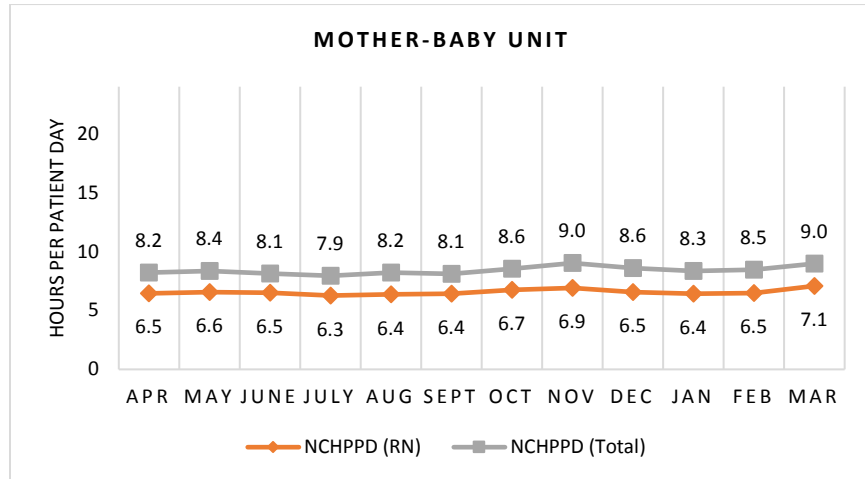
## 2017 Nurse Staffing Data

### UNIVERSITY OF VERMONT MEDICAL CENTER Mother-Baby Unit

The Mother-Baby Unit has 28 licensed beds.

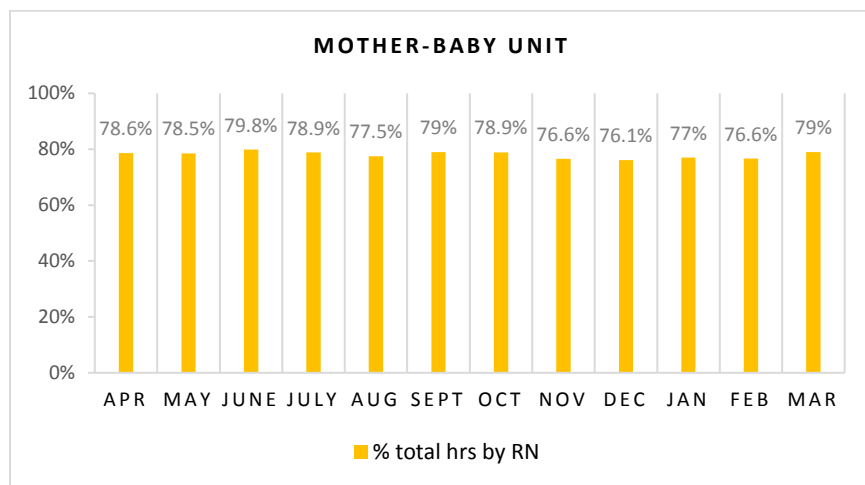
#### Nursing Care Hours per Patient Day (NCHPPD): April 2016 - March 2017

This graph shows the average number of direct nursing care hours provided per patient during a 24-hour period. Results are shown for care provided by registered nurses (RNs) and by all nursing staff (total) by month.



#### Percent of Total Nursing Care Hours Provided by RNs: April 2016 - March 2017

This graph shows the percentage of total nursing hours provided by RNs each month. Yearly average for this period is 78.05%.



**Trend on Yearly Average of RN and Total Nursing Care Hours per Patient Day, Percent of Total Nursing Care Hours Provided by RNs, are not yet available this year.**