

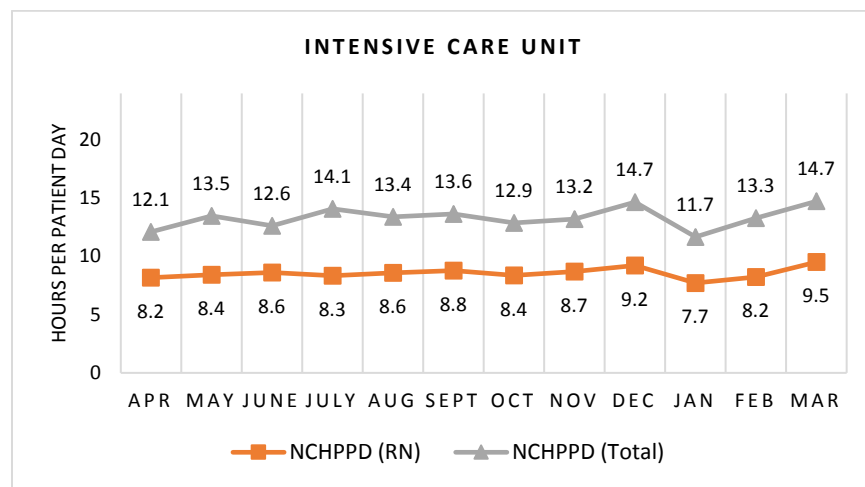
NORTHWESTERN MEDICAL CENTER

Intensive Care Unit

The Intensive Care Unit has 10 licensed beds including 6 step-down beds. Types of services provided in this setting include care of people with, or at risk of developing life-threatening problems. The step-down beds are used for people who are moving from the intensive care unit to the medical/surgical unit. In addition, patients who are awaiting nursing home placement are sometimes care for on this unit.

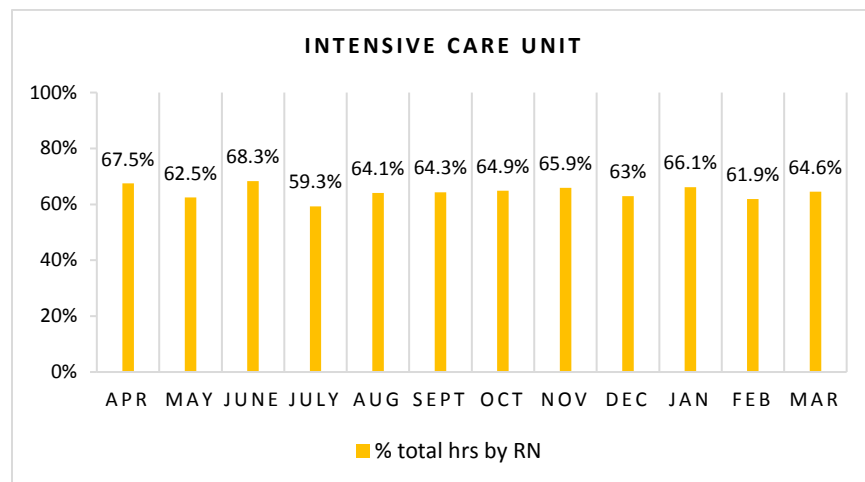
Nursing Care Hours per Patient Day (NCHPPD): April 2016 - March 2017

This graph shows the average number of direct nursing care hours provided per patient during a 24-hour period. Results are shown for care provided by registered nurses (RNs) and by all nursing staff (total) by month.



Percent of Total Nursing Care Hours Provided by RNs: April 2016 - March 2017

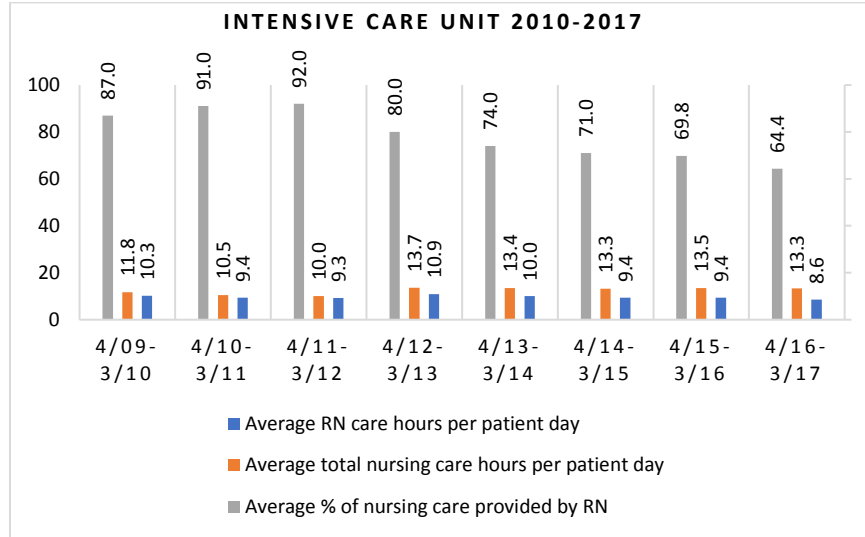
This graph shows the percentage of total nursing hours provided by RNs each month. Yearly average for this period is 64.4%.



2017 Nurse Staffing Data

Yearly Average of RN and Total Nursing Care Hours per Patient Day, Percent of Total Nursing Care Hours Provided by RNs, 2010 - 2017

The graph below shows trend over time on the average RN and total nursing care hours per patient days, and average percentage of nursing care that was provided by RN.



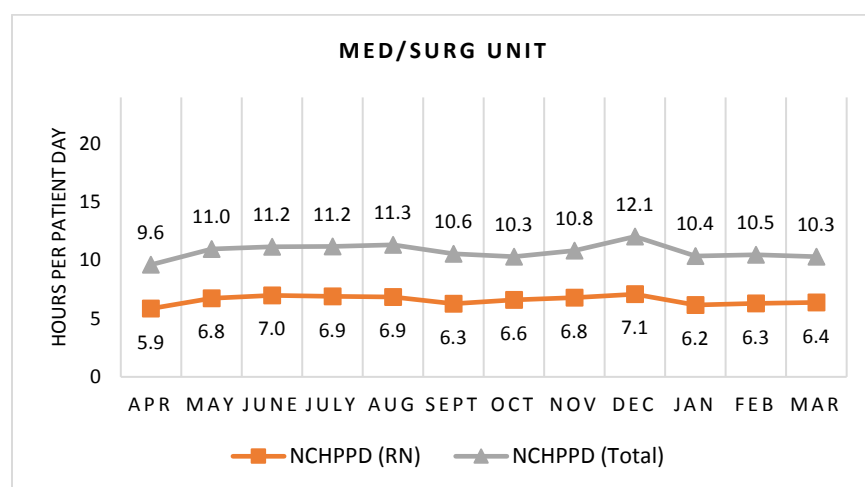
NORTHWESTERN MEDICAL CENTER

Medical/Surgical Unit

The Medical/Surgical Unit has 32 licensed beds and primarily cares for adult patients. Types of services provided in this setting include care of people with general medical and surgical problems, heart monitoring, end-of-life care, and rehabilitative care. Patients who are awaiting nursing home placement are sometimes cared for on this unit.

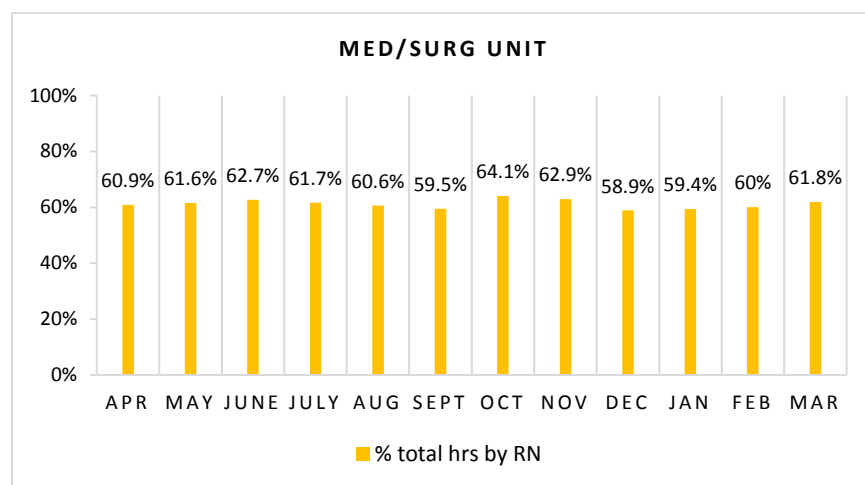
Nursing Care Hours per Patient Day (NCHPPD): April 2016 - March 2017

This graph shows the average number of direct nursing care hours provided per patient during a 24-hour period. Results are shown for care provided by registered nurses (RNs) and by all nursing staff (total) by month.



Percent of Total Nursing Care Hours Provided by RNs: April 2016 - March 2017

This graph shows the percentage of total nursing hours provided by RNs each month. Yearly average for this period is 61.2%.



2017 Nurse Staffing Data

Yearly Average of RN and Total Nursing Care Hours per Patient Day, Percent of Total Nursing Care Hours Provided by RNs, 2010 - 2017

The graph below shows trend over time on the average RN and total nursing care hours per patient days, and average percentage of nursing care that was provided by RN.

