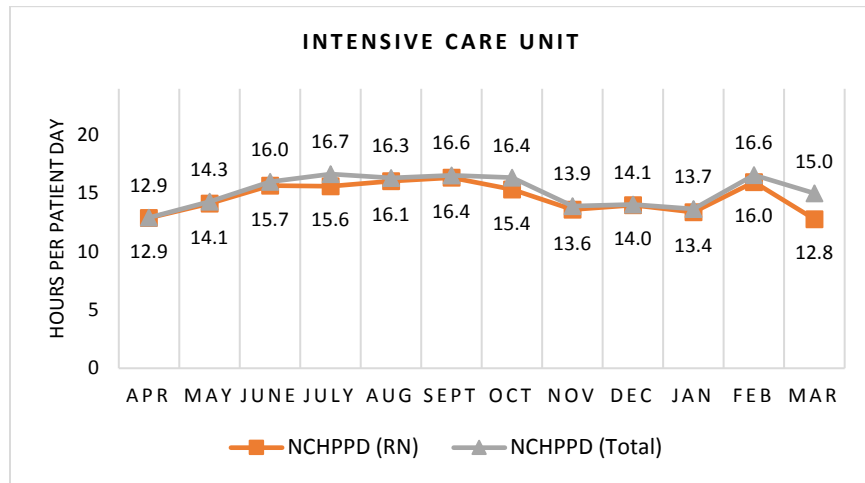


NORTH COUNTRY HOSPITAL Intensive Care Unit

The Intensive Care Unit has 5 licensed beds. Types of services provided in this setting include care of people with, or at risk of developing life-threatening problems.

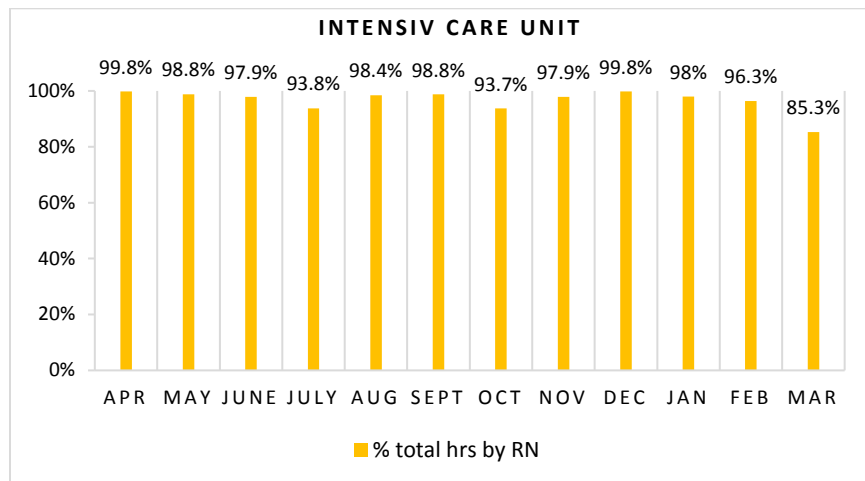
Nursing Care Hours per Patient Day (NCHPPD): April 2016 - March 2017

This graph shows the average number of direct nursing care hours provided per patient during a 24-hour period. Results are shown for care provided by registered nurses (RNs) and by all nursing staff (total) by month.



Percent of Total Nursing Care Hours Provided by RNs: April 2016 - March 2017

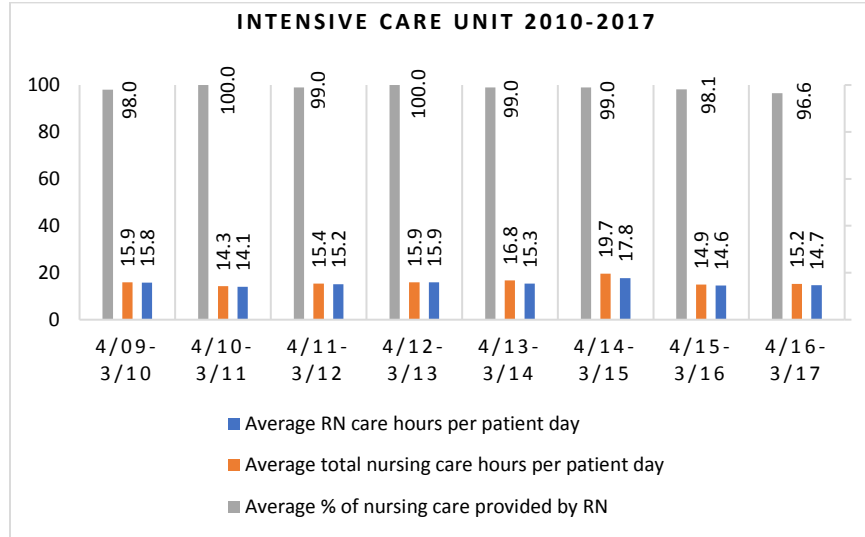
This graph shows the percentage of total nursing hours provided by RNs each month. Yearly average for this period is 96.6%.



2017 Nurse Staffing Data

Yearly Average of RN and Total Nursing Care Hours per Patient Day, Percent of Total Nursing Care Hours Provided by RNs, 2010 - 2017

The graph below shows trend over time on the average RN and total nursing care hours per patient days, and average percentage of nursing care that was provided by RN.

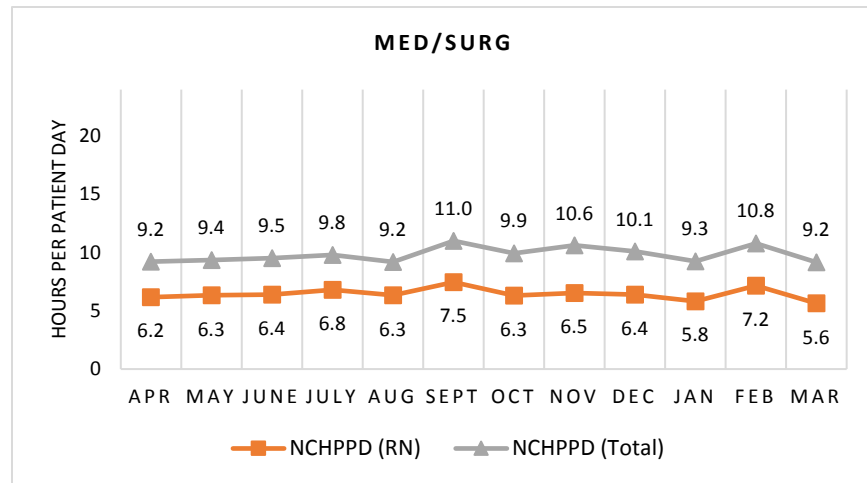


NORTH COUNTRY HOSPITAL Medical/Surgical Unit

The Medical/Surgical Unit has 20 licensed beds and cares for adult patients. Types of services provided in this setting include care of people with general medical and surgical problems, heart monitoring, end-of-life care, and rehabilitative care.

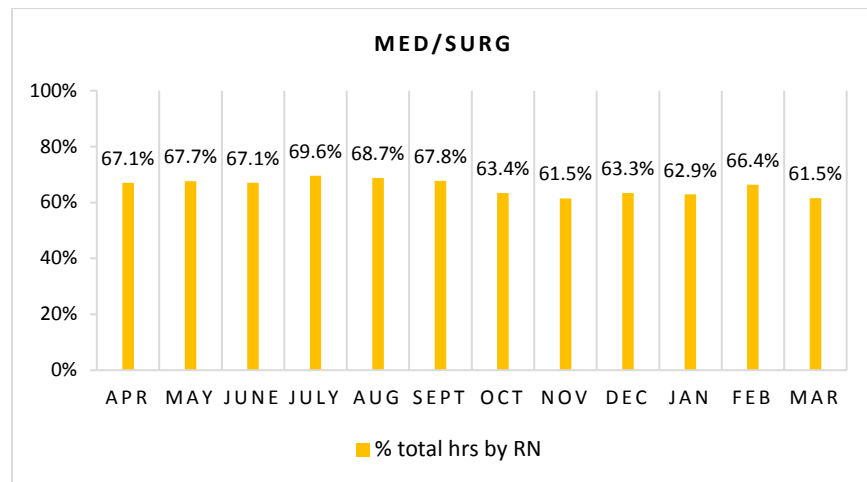
Nursing Care Hours per Patient Day (NCHPPD): April 2016 - March 2017

This graph shows the average number of direct nursing care hours provided per patient during a 24-hour period. Results are shown for care provided by registered nurses (RNs) and by all nursing staff (total) by month.



Percent of Total Nursing Care Hours Provided by RNs: April 2016 - March 2017

This graph shows the percentage of total nursing hours provided by RNs each month. Yearly average for this period is 65.6%.



2017 Nurse Staffing Data

Yearly Average of RN and Total Nursing Care Hours per Patient Day, Percent of Total Nursing Care Hours Provided by RNs, 2010 - 2017

The graph below shows trend over time on the average RN and total nursing care hours per patient days, and average percentage of nursing care that was provided by RN.

