

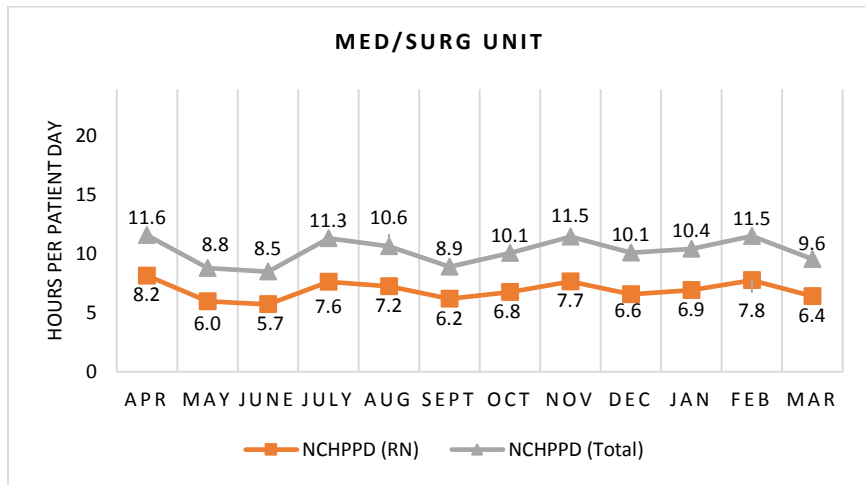
2017 Nurse Staffing Data

GRACE COTTAGE HOSPITAL
Medical/Surgical Unit

The Inpatient Unit has 19 licensed beds and cares for adult and limited pediatric patients. Types of services provided in this setting include care of people with acute medical problems, heart monitoring, subacute medical and surgical rehabilitative care (Swing Bed Patients), and end-of-life care.

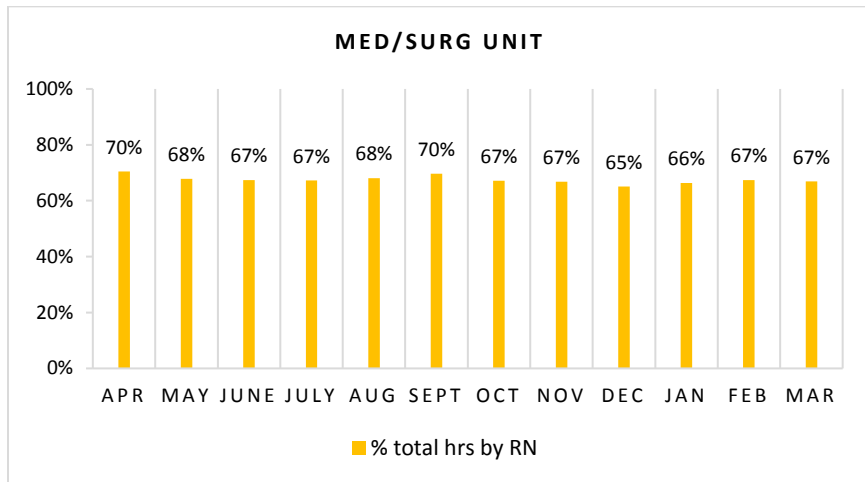
Nursing Care Hours per Patient Day (NCHPPD): April 2016 - March 2017

This graph shows the average number of direct nursing care hours provided per patient during a 24-hour period. Results are shown for care provided by registered nurses (RNs) and by all nursing staff (total) by month.



Percent of Total Nursing Care Hours Provided by RNs: April 2016 - March 2017

This graph shows the percentage of total nursing hours provided by RNs each month. Yearly average for this period is 67.5%.



2017 Nurse Staffing Data

Yearly Average of RN and Total Nursing Care Hours per Patient Day, Percent of Total Nursing Care Hours Provided by RNs, 2010 - 2017

The graph below shows trend over time on the average RN and total nursing care hours per patient days, and average percentage of nursing care that was provided by RN.

