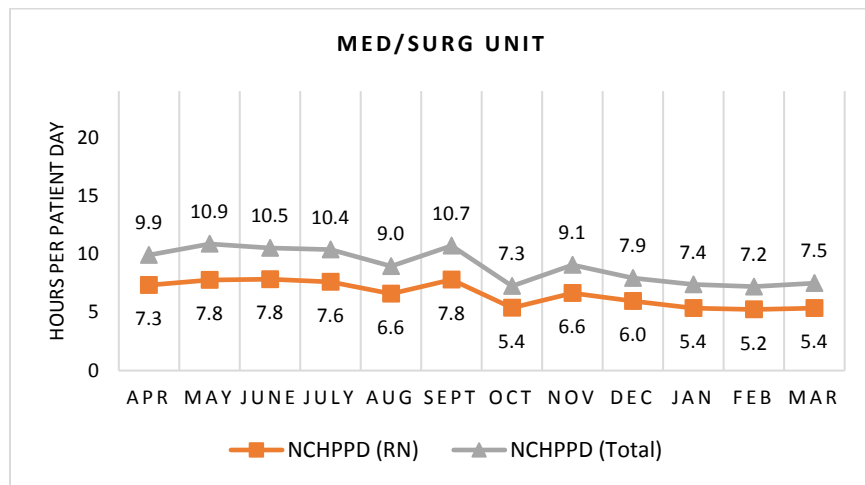


COPLEY HOSPITAL
Medical/Surgical Unit

The Medical/Surgical unit has 15 licensed beds and cares for patients of all ages. Types of services provided in this setting include care of people with general medical and surgical problems, care of stable and uncomplicated pediatric patients, end-of-life care, rehabilitative care, and skilled nursing facility care.

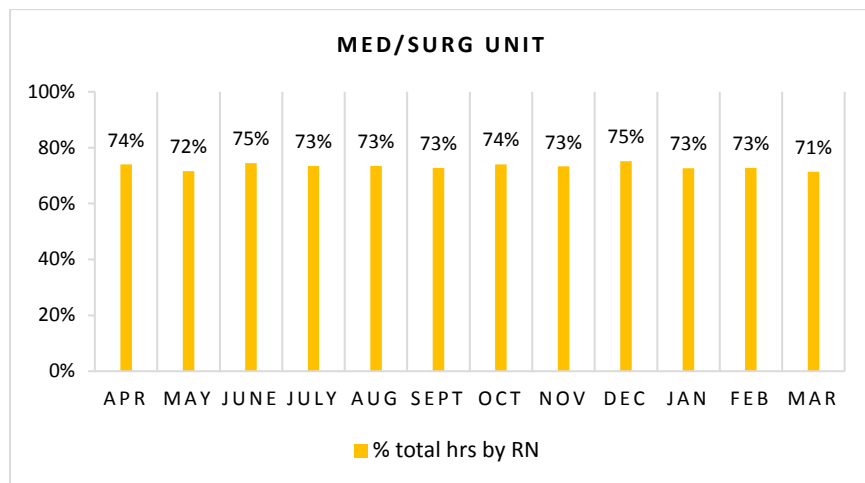
Nursing Care Hours per Patient Day (NCHPPD): April 2016 - March 2017

This graph shows the average number of direct nursing care hours provided per patient during a 24-hour period. Results are shown for care provided by registered nurses (RNs) and by all nursing staff (total) by month.



Percent of Total Nursing Care Hours Provided by RNs: April 2016 - March 2017

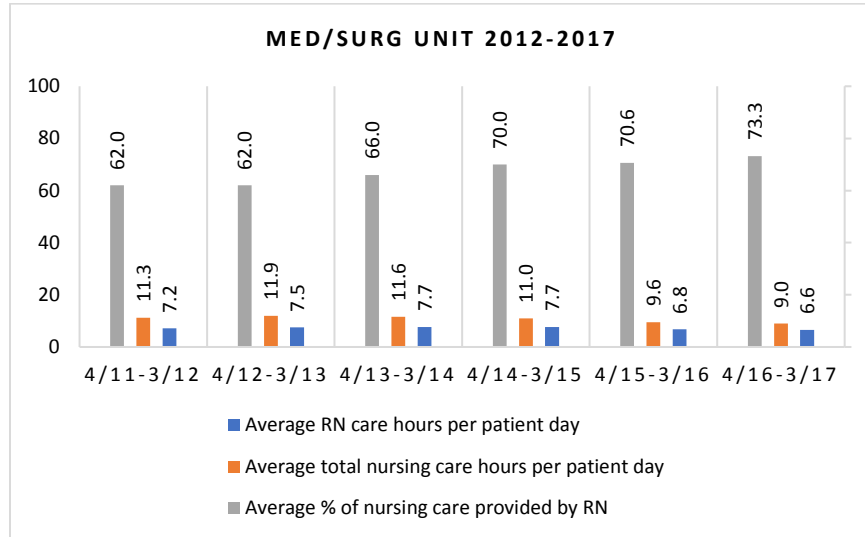
This graph shows the percentage of total nursing hours provided by RNs each month. Yearly average for this period is 73.3%.



2017 Nurse Staffing Data

Yearly Average of RN and Total Nursing Care Hours per Patient Day, Percent of Total Nursing Care Hours Provided by RNs, 2012 - 2017

The graph below shows trend over time on the average RN and total nursing care hours per patient days, and average percentage of nursing care that was provided by RN.

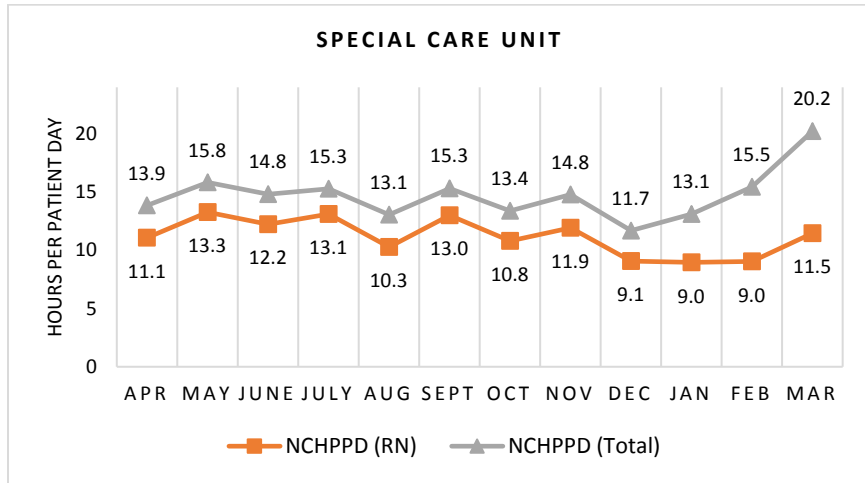


COPLEY HOSPITAL
Special Care Unit

The Special Care Unit has 6 licensed beds. Types of services provided in this setting include care of people with, or at risk of developing life-threatening problems.

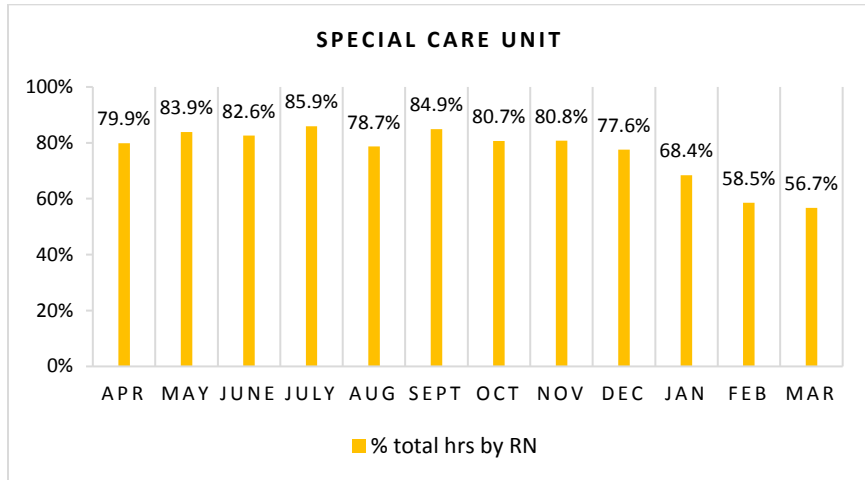
Nursing Care Hours per Patient Day (NCHPPD): April 2016 - March 2017

This graph shows the average number of direct nursing care hours provided per patient during a 24-hour period. Results are shown for care provided by registered nurses (RNs) and by all nursing staff (total) by month.



Percent of Total Nursing Care Hours Provided by RNs: April 2016 - March 2017

This graph shows the percentage of total nursing hours provided by RNs each month. Yearly average for this period is 76.6%.



2017 Nurse Staffing Data

Yearly Average of RN and Total Nursing Care Hours per Patient Day, Percent of Total Nursing Care Hours Provided by RNs, 2012 - 2017

The graph below shows trend over time on the average RN and total nursing care hours per patient days, and average percentage of nursing care that was provided by RN.

