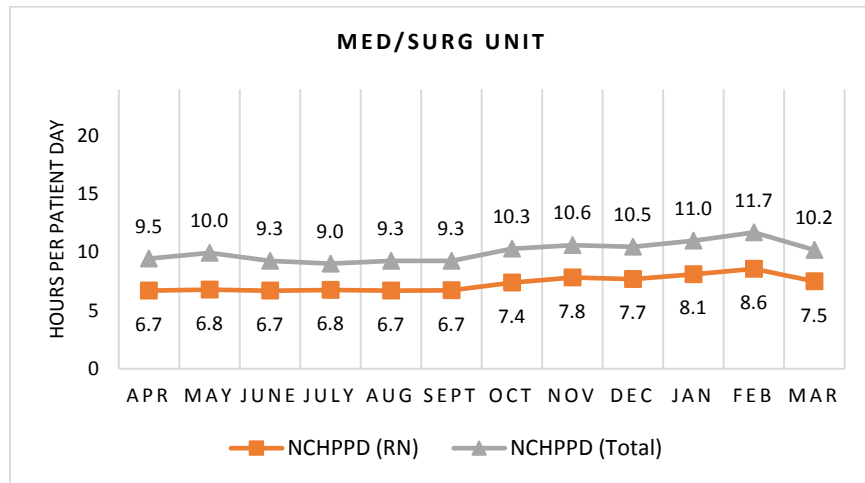


BRATTLEBORO MEMORIAL HOSPITAL Medical/Surgical Unit

The Medical/Surgical units have 28 licensed beds and care for patients age 15 and up. Types of services provided in this setting include care of people with general medical and surgical problems, heart monitoring, and end-of-life care.

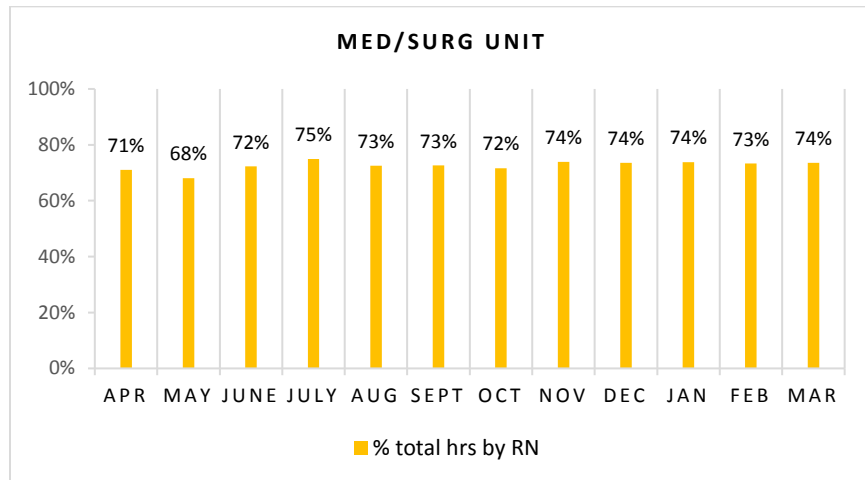
Nursing Care Hours per Patient Day (NCHPPD): April 2016 - March 2017

This graph shows the average number of direct nursing care hours provided per patient during a 24-hour period. Results are shown for care provided by registered nurses (RNs) and by all nursing staff (total) by month.



Percent of Total Nursing Care Hours Provided by RNs: April 2016 - March 2017

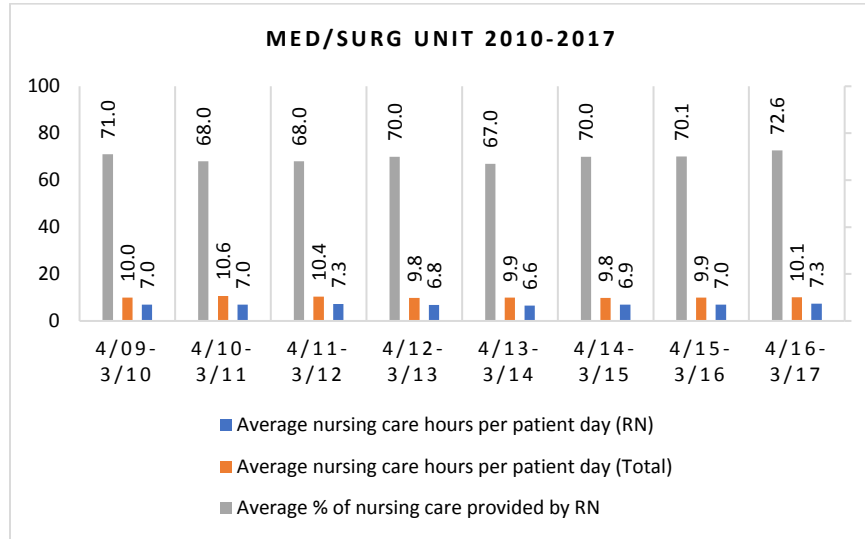
This graph shows the percentage of total nursing hours provided by RNs each month. Yearly average for this period is 72.6%.



2017 Nurse Staffing Data

Yearly Average of RN and Total Nursing Care Hours per Patient Day, Percent of Total Nursing Care Hours Provided by RNs, 2010 - 2017

The graph below shows trend over time on the average RN and total nursing care hours per patient days, and average percentage of nursing care that was provided by RN.

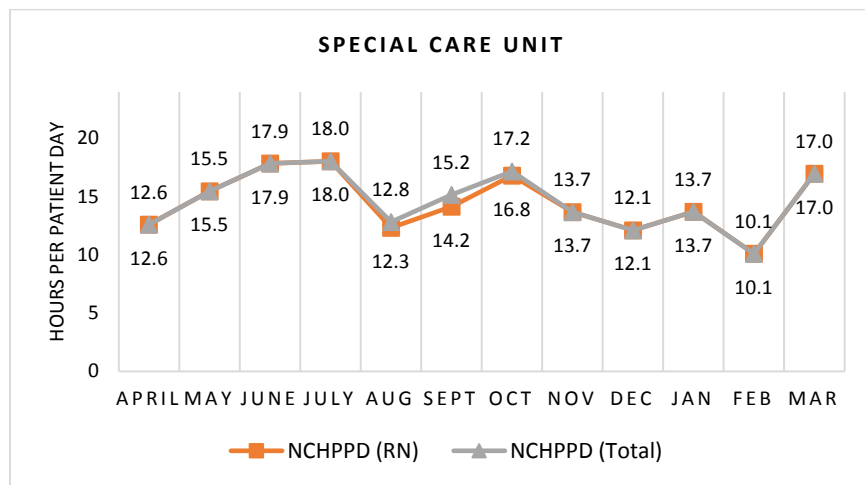


BRATTLEBORO MEMORIAL HOSPITAL Special Care Unit

The Special Care Unit has 5 licensed beds. Starting September 2016, these 5 beds have been integrated into a Medical/Surgical Unit on the same floor. When these high acuity beds are occupied, appropriate staff are assigned to meet the needs of these patients. Types of services provided in this setting include care of people with, or at risk of developing life-threatening problems, and pediatrics.

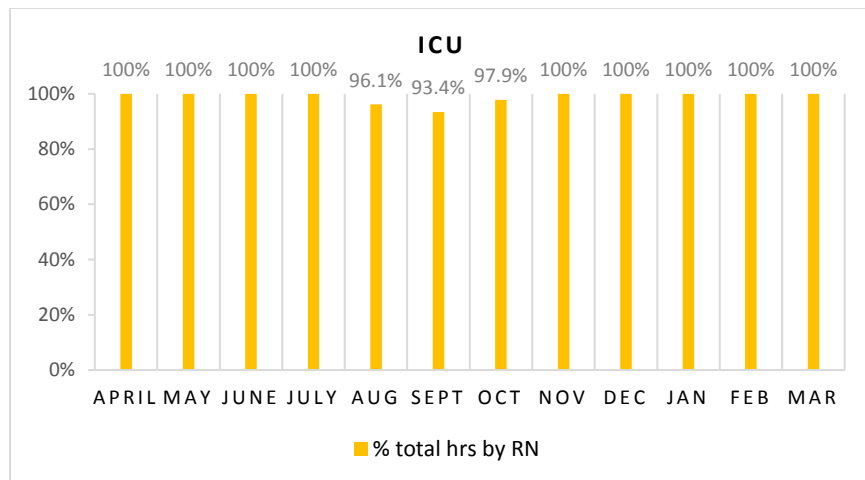
Nursing Care Hours per Patient Day (NCHPPD): April 2016 - March 2017

This graph shows the average number of direct nursing care hours provided per patient during a 24-hour period. Results are shown for care provided by registered nurses (RNs) and by all nursing staff (total) by month.



Percent of Total Nursing Care Hours Provided by RNs: April 2016 - March 2017

This graph shows the percentage of total nursing hours provided by RNs each month. Yearly average for this period is 99.0%.



2017 Nurse Staffing Data

Yearly Average of RN and Total Nursing Care Hours per Patient Day, Percent of Total Nursing Care Hours Provided by RNs, 2010 - 2017

The graph below shows trend over time on the average RN and total nursing care hours per patient days, and average percentage of nursing care that was provided by RN.

