



# Opioid Coordination Council: Prevention - Vermont, Iceland, Chile

Monday, March 18, 2019



# Youth Risk Behavior Survey Results over the Decade

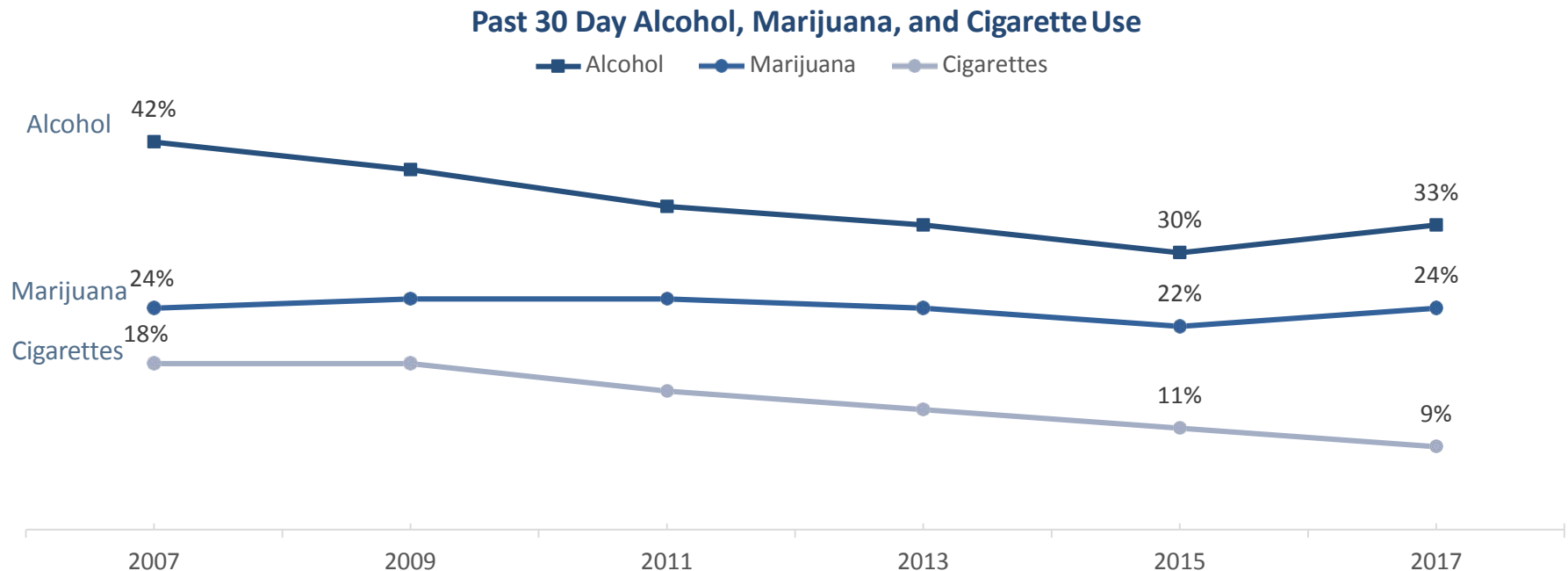


# Current Alcohol, Tobacco, and Marijuana Use

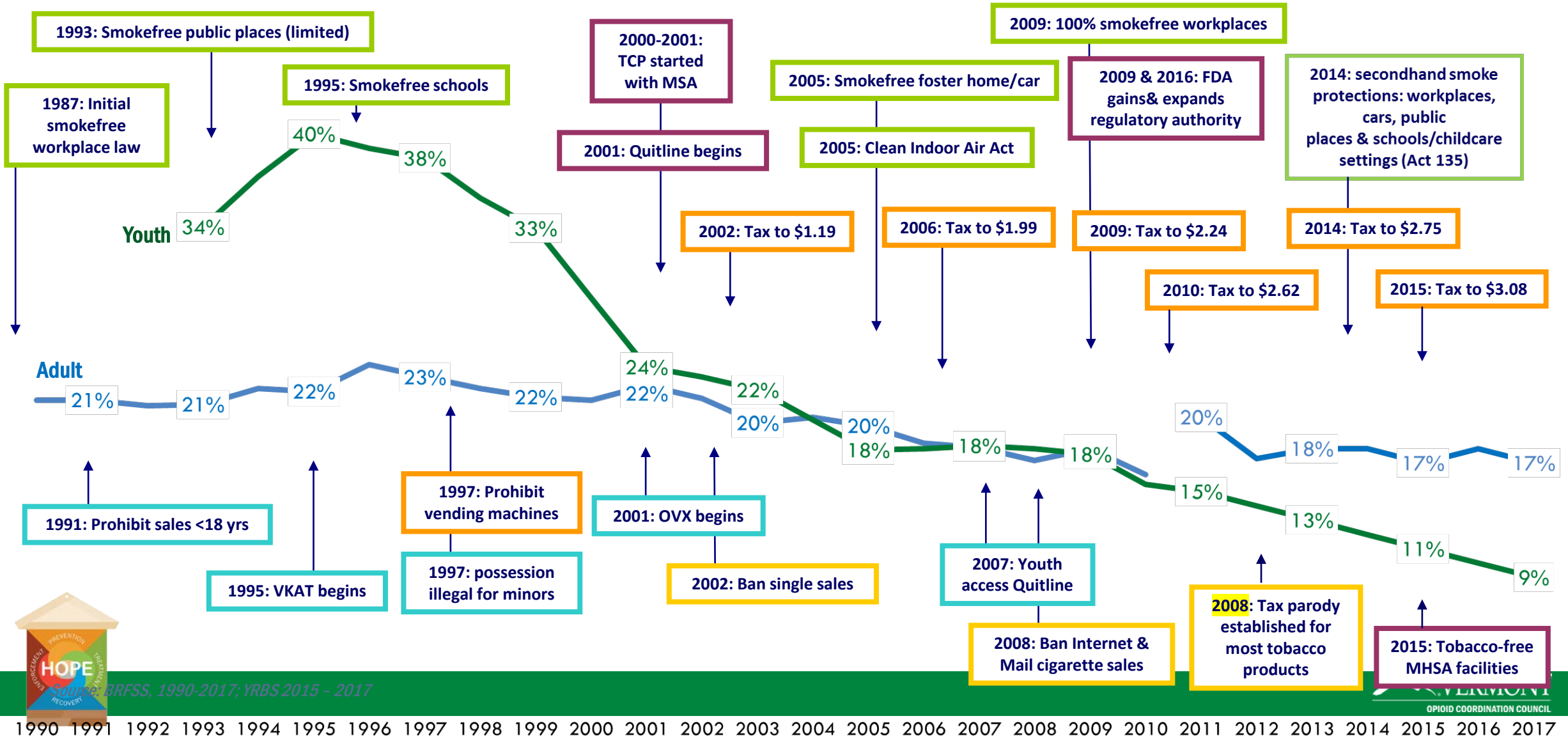
In 2017, the percent of students who currently smoke cigarettes dropped below the Healthy Vermonters 2020 Goal of 10%. Over the past decade, the percent of students who currently smoke cigarettes consistently and significantly decreased from 18% to 9%.

Current alcohol use has decreased by 10% since 2007 but significantly increased between 2015 and 2017.

Marijuana use has remained stable over the past 10 years but significantly increased between 2015 and 2017. Current marijuana use among high school students remains above the HV2020 Goal of 20%.



# Tobacco Use Policy & Prevalence 1987 - 2017



BRFSS, 1990-2017; YRBS 2015 - 2017

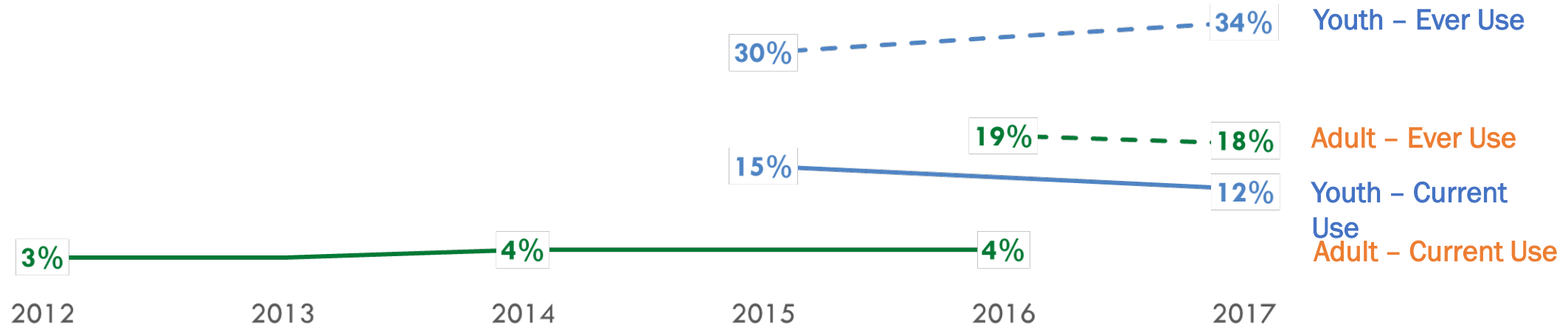


# Electronic Vapor Product Use Policy & Prevalence 2012 - 2017

GOVERNMENT	SECONDHAND SMOKE
SALES	YOUTH RELATED
	TAXES

2012: Ban e-cig sales to people under 18 years old

2016: E-cigs display requirements

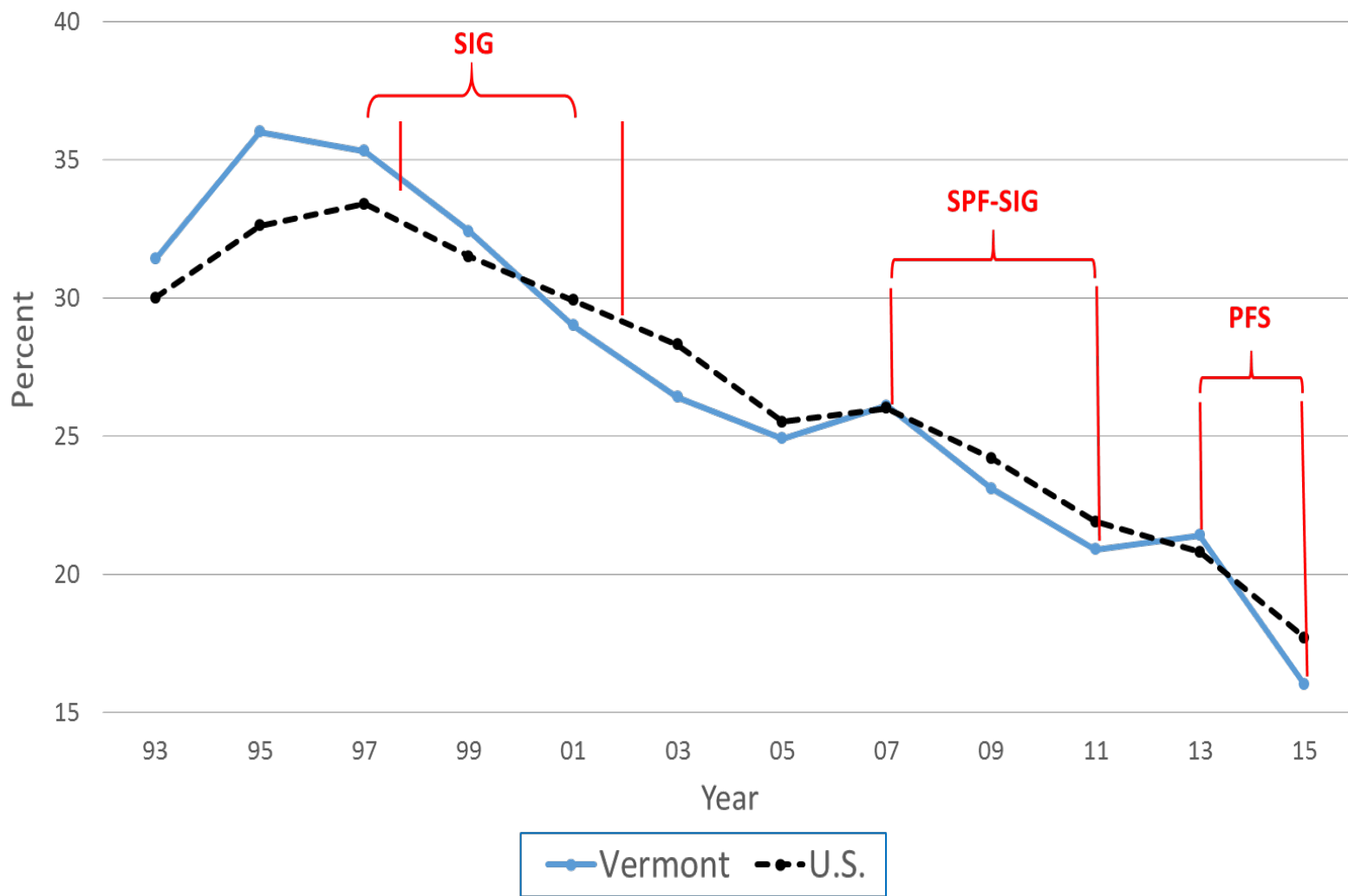


2016: E-cigs added to Clean Indoor Air law (Act 108)



Source: BRFSS, 2016-2017; ATS 2012-2016; YRBS 2015 - 2017

Percent of High School Students Reporting Binge Drinking in Past 30 Days



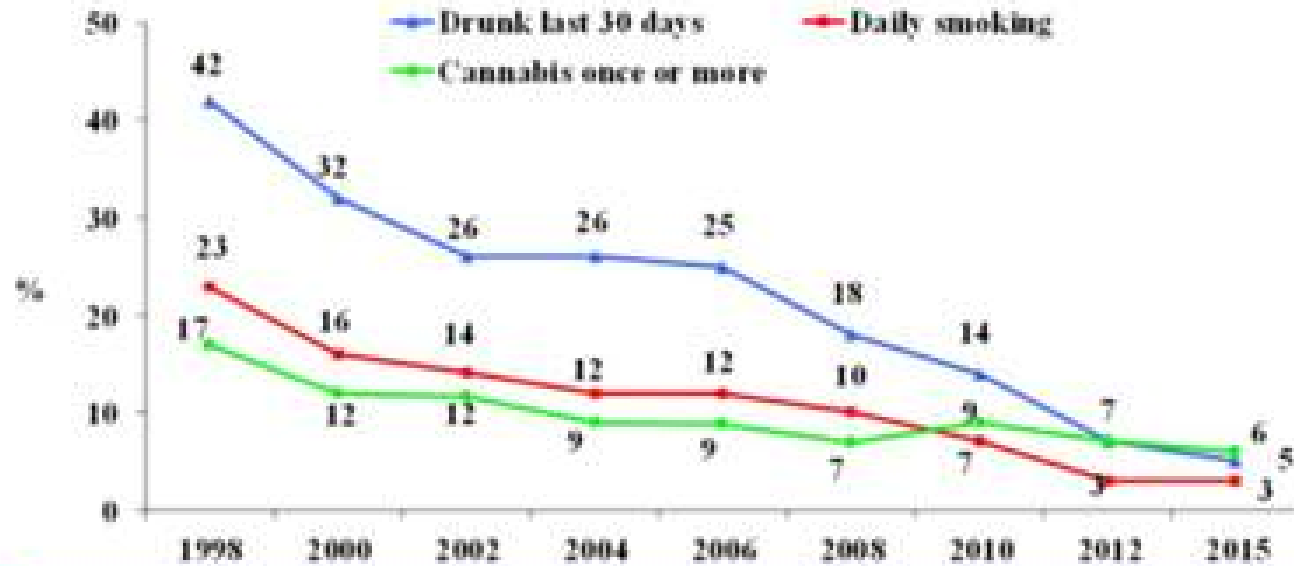
# Our Future is in Prevention – Across the Lifespan

- Messaging campaigns and education to raise awareness, address stigma.
- Evidence-based nurse practitioner home visiting models – ACEs reduction.
- Afterschool curricula and activities for adolescents – the “third space”.
- Iceland model – community activation, parental investment, youth voice.
- School-based primary prevention programs.
- Community mobilization – developing and expanding community coalitions.



# The Iceland Model

## Substance use decrease amongst 15-16 year old adolescents







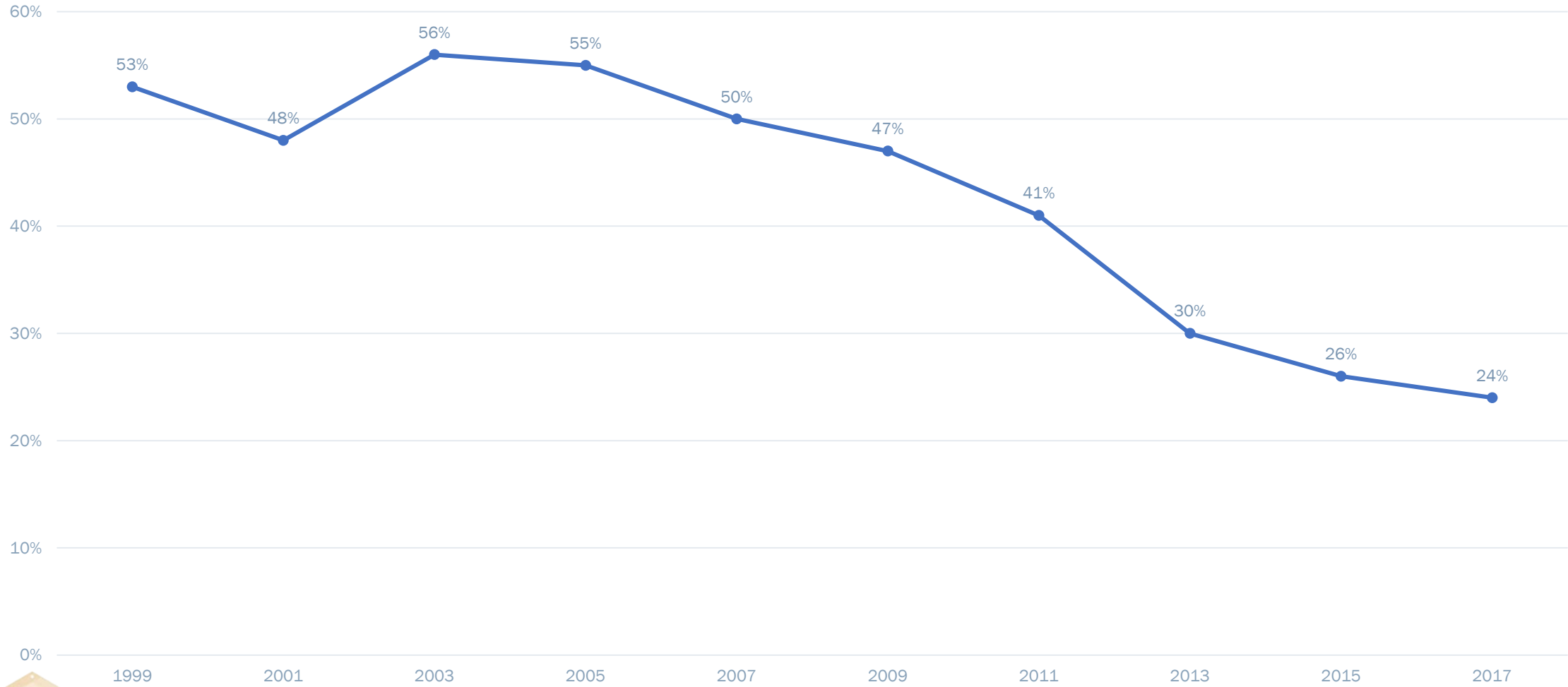
## Deerfield Valley Community Partnership: Coalition since 1997

- All sectors of our community come together to develop a comprehensive coordinated, inclusive solution to our community's substance abuse problems.
- Focus on Primary Prevention- Preventing the early onset of any substance use
- Community Needs





# Windham Southwest Supervisory Union YRBS Grades 9-12 Past 30 Day Alcohol Use 1999-2017



# Windham Southwest Supervisory Union YRBS Grades 9-12 Past 30 Day MJ Use 1999-2017

