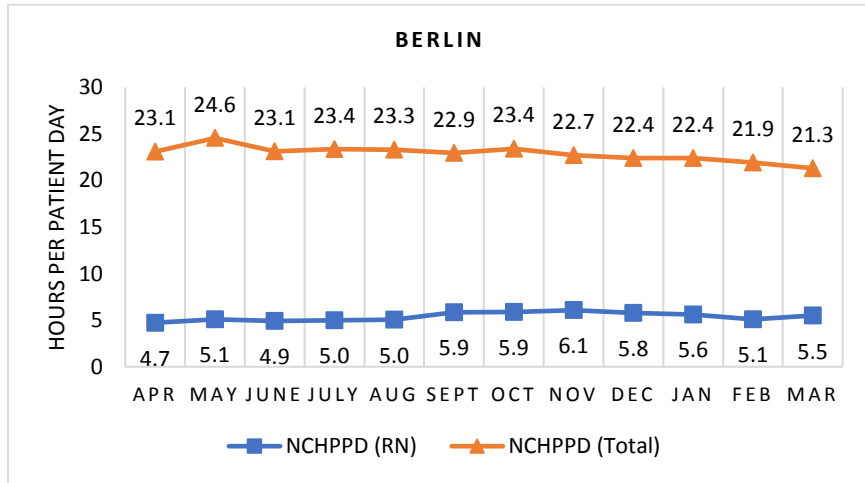


VERMONT PSYCHIATRIC CARE HOSPITAL Berlin

The Vermont Psychiatric Care Hospital is a state-operated 25 bed secure facility, providing acute care for involuntarily hospitalized adults diagnosed with a psychiatric disorder.

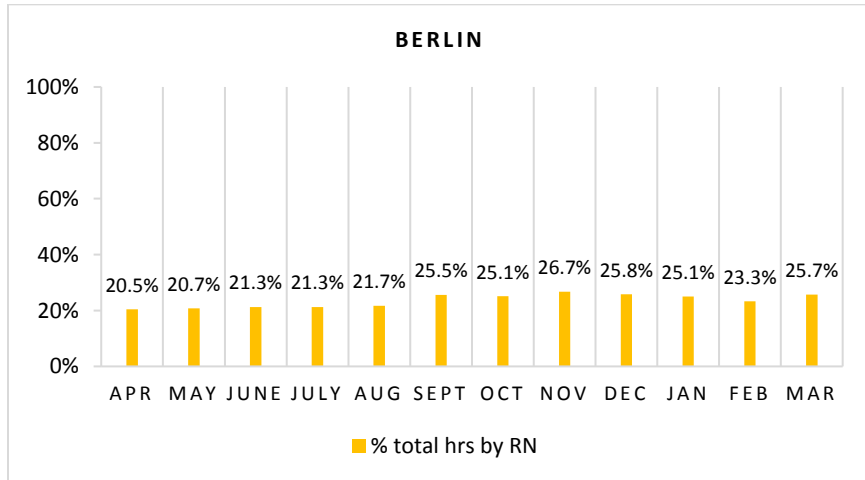
Nursing Care Hours per Patient Day (NCHPPD): April 2017 - March 2018

This graph shows the average number of direct nursing care hours provided per patient during a 24-hour period. Results are shown for care provided by registered nurses (RNs) and by all nursing staff (total) by month.



Percent of Total Nursing Care Hours Provided by RNs: April 2017 - March 2018

This graph shows the percentage of total nursing hours provided by RNs each month. Yearly average for this period is 23.6%.



2018 Nurse Staffing Data

Yearly Average of RN and Total Nursing Care Hours per Patient Day, Percent of Total Nursing Care Hours Provided by RNs, 2016 - 2018

The graph below shows trend over time on the average RN and total nursing care hours per patient days, and average percentage of nursing care that was provided by RN.

