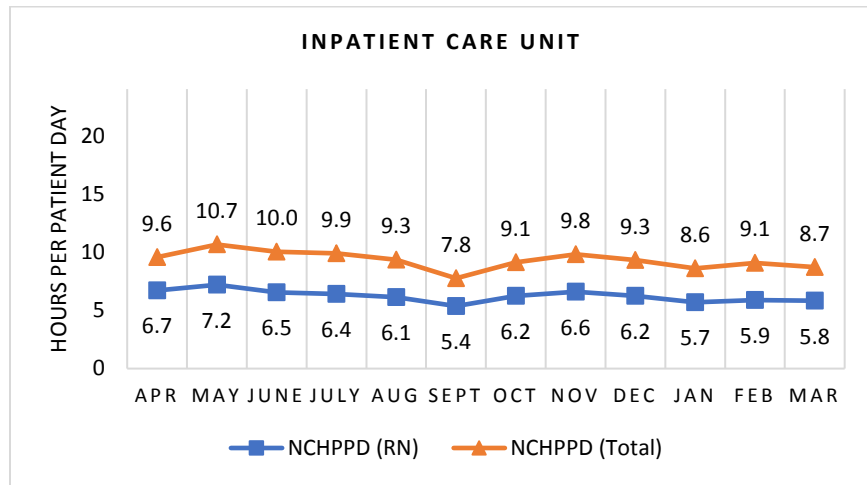


**SPRINGFIELD HOSPITAL**  
**Inpatient Care Unit**

The Inpatient Care Unit has 25 licensed beds and cares for patients of all ages. Types of services provided in this setting include care for medical and surgical patients, telemetry monitoring, end-of-life care, and swing bed patients.

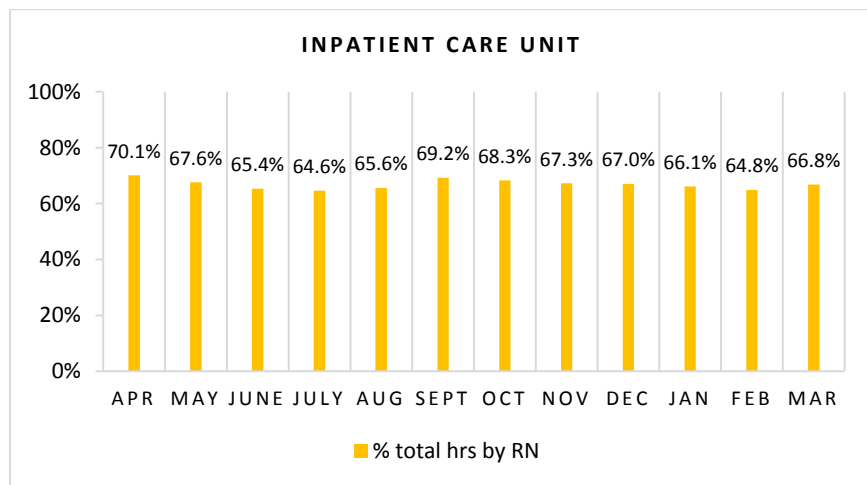
**Nursing Care Hours per Patient Day (NCHPPD): April 2017 - March 2018**

This graph shows the average number of direct nursing care hours provided per patient during a 24-hour period. Results are shown for care provided by registered nurses (RN) and by all nursing staff (total) by month.



**Percent of Total Nursing Care Hours Provided by RNs: April 2017 - March 2018**

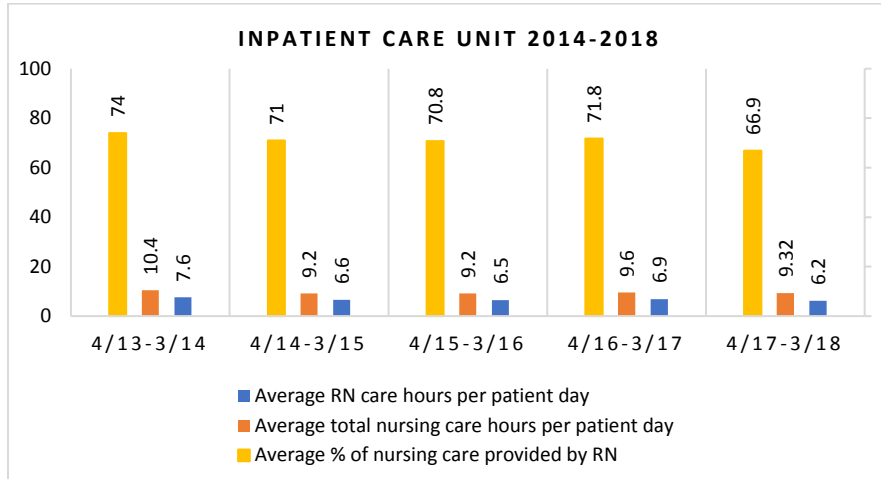
This graph shows the percentage of total nursing hours provided by RNs each month. Yearly average for this period is 66.9%.



## 2018 Nurse Staffing Data

### Yearly Average of RN and Total Nursing Care Hours per Patient Day, Percent of Total Nursing Care Hours Provided by RNs, 2014 - 2018

The graph below shows trend over time on the average RN and total nursing care hours per patient days, and average percentage of nursing care that was provided by RN.

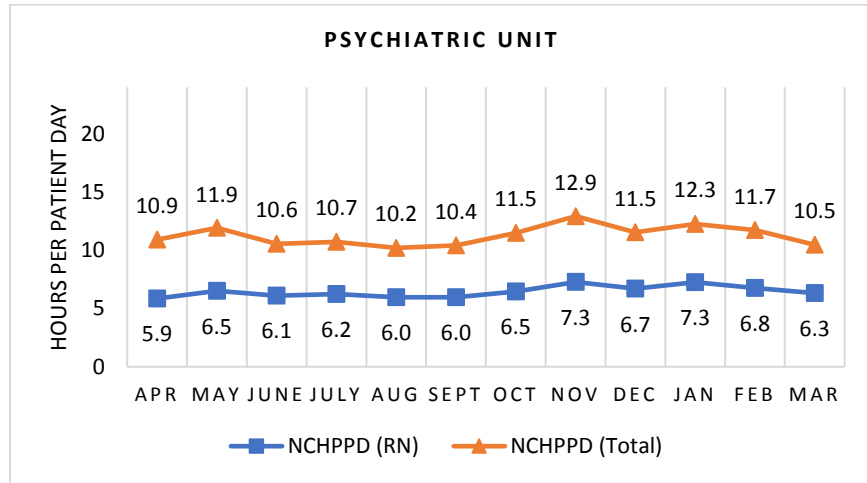


**SPRINGFIELD HOSPITAL**  
**Psychiatric Unit (Windham Center)**

The Psychiatric Unit has 10 licensed beds. Types of services provided in this setting include short-term, secure, inpatient care for individuals with a mental health diagnosis, substance abuse disorder, or both.

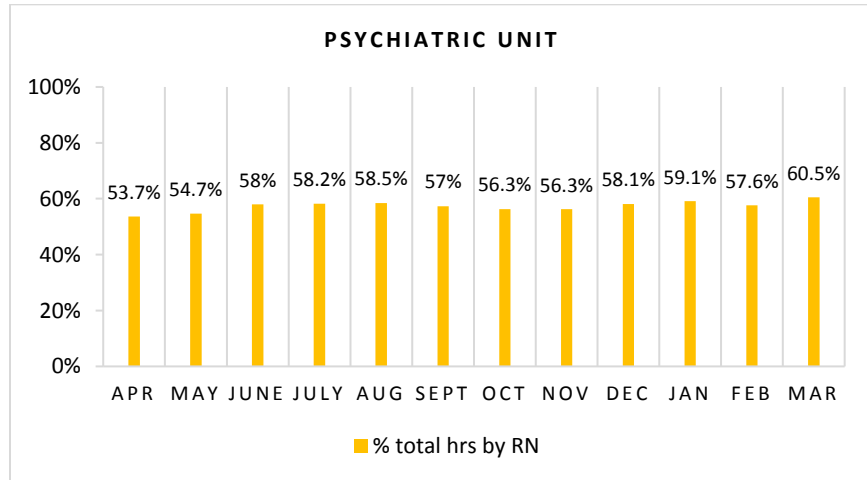
**Nursing Care Hours per Patient Day (NCHPPD): April 2017 - March 2018**

This graph shows the average number of direct nursing care hours provided per patient during a 24-hour period. Results are shown for care provided by registered nurses (RN) and by all nursing staff (total) by month.



**Percent of Total Nursing Care Hours Provided by RNs: April 2017 - March 2018**

This graph shows the percentage of total nursing hours provided by RNs each month. Yearly average for this period is 57.4%.



## 2018 Nurse Staffing Data

### Yearly Average of RN and Total Nursing Care Hours per Patient Day, Percent of Total Nursing Care Hours Provided by RNs, 2010 - 2018

The graph below shows trend over time on the average RN and total nursing care hours per patient days, and average percentage of nursing care that was provided by RN.

