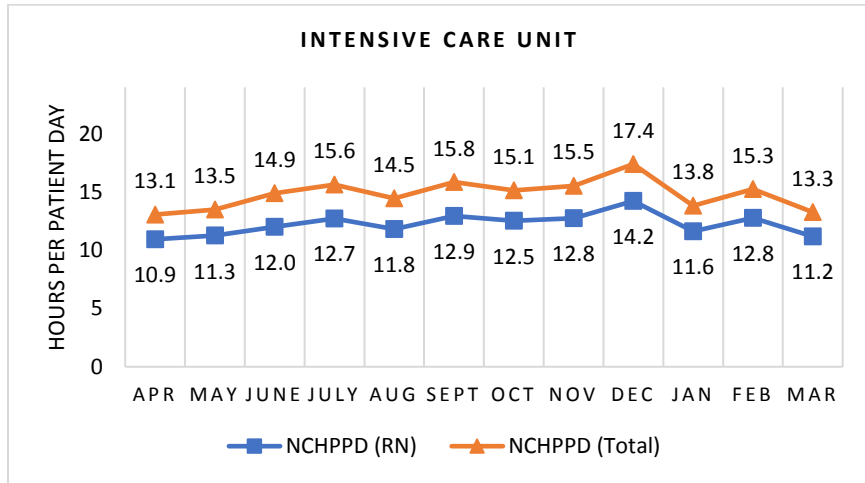


SOUTHWESTERN VERMONT MEDICAL CENTER
Intensive Care Unit

The Intensive Care Unit has 12 licensed beds. Types of services provided in this setting include care of people with, or at risk of developing life-threatening problems.

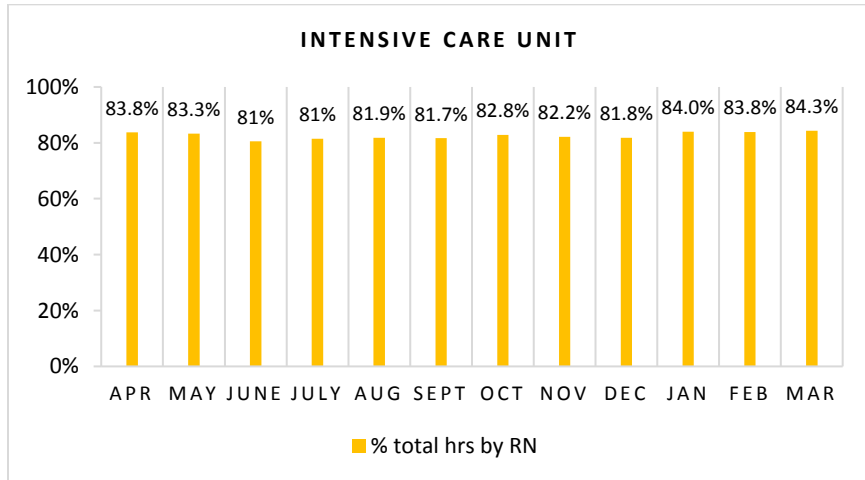
Nursing Care Hours per Patient Day (NCHPPD): April 2017 - March 2018

This graph shows the average number of direct nursing care hours provided per patient during a 24-hour period. Results are shown for care provided by registered nurses (RN) and by all nursing staff (total) by month.



Percent of Total Nursing Care Hours Provided by RNs: April 2017 - March 2018

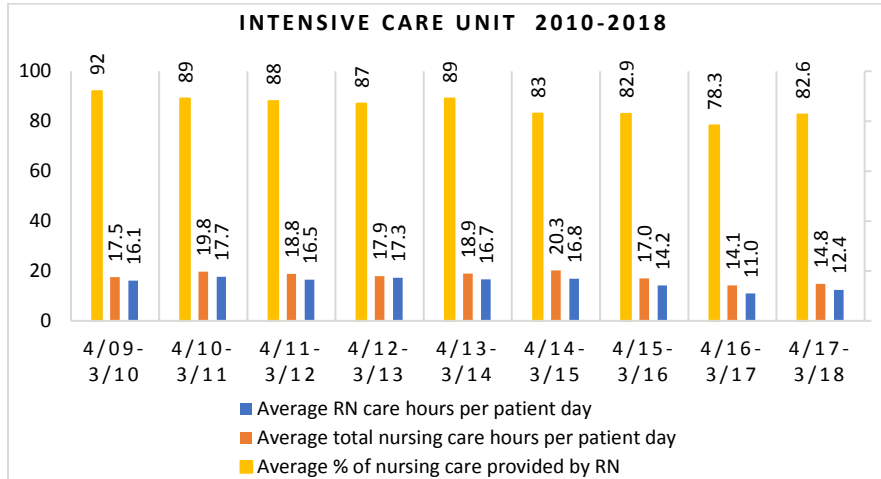
This graph shows the percentage of total nursing hours provided by RNs each month. Yearly average for this period is 82.6%.



2018 Nurse Staffing Data

Yearly Average of RN and Total Nursing Care Hours per Patient Day, Percent of Total Nursing Care Hours Provided by RNs, 2010 - 2018

The graph below shows trend over time on the average RN and total nursing care hours per patient days, and average percentage of nursing care that was provided by RN.

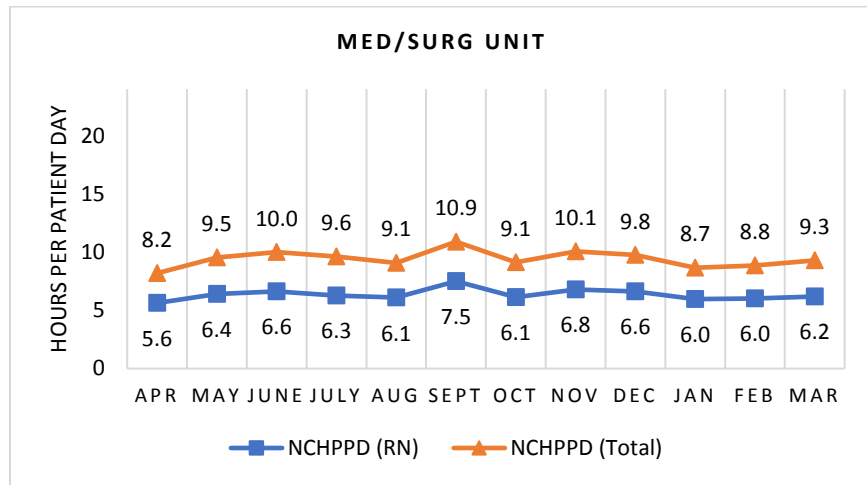


SOUTHWESTERN VERMONT MEDICAL CENTER
Medical/Surgical Unit

The Medical/Surgical Unit has 51 licensed beds and cares for patients ages 15 and older. Types of services provided in this setting include care of people with general medical and surgical problems, heart monitoring, end-of-life care, and rehabilitative care.

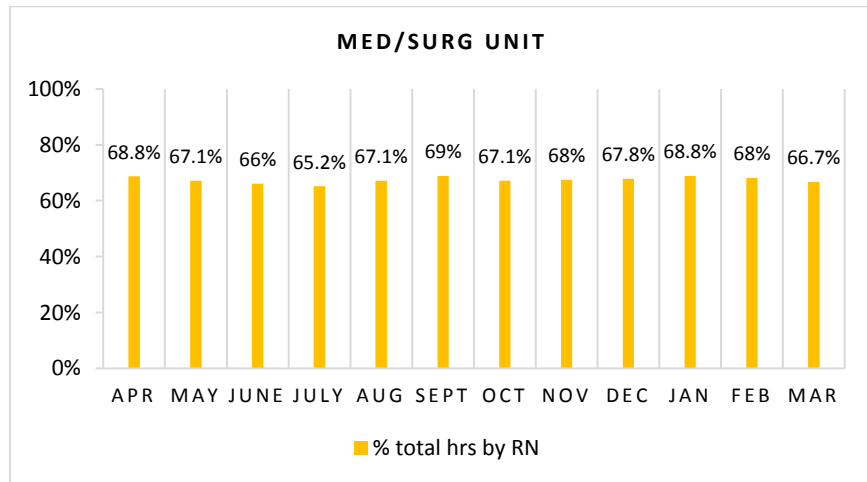
Nursing Care Hours per Patient Day (NCHPPD): April 2017 - March 2018

This graph shows the average number of direct nursing care hours provided per patient during a 24-hour period. Results are shown for care provided by registered nurses (RNs) and by all nursing staff (total) by month.



Percent of Total Nursing Care Hours Provided by RNs: April 2017 - March 2018

This graph shows the percentage of total nursing hours provided by RNs each month. Yearly average for this period is 67.4%.



2018 Nurse Staffing Data

Yearly Average of RN and Total Nursing Care Hours per Patient Day, Percent of Total Nursing Care Hours Provided by RNs, 2010 - 2018

The graph below shows trend over time on the average RN and total nursing care hours per patient days, and average percentage of nursing care that was provided by RN.

