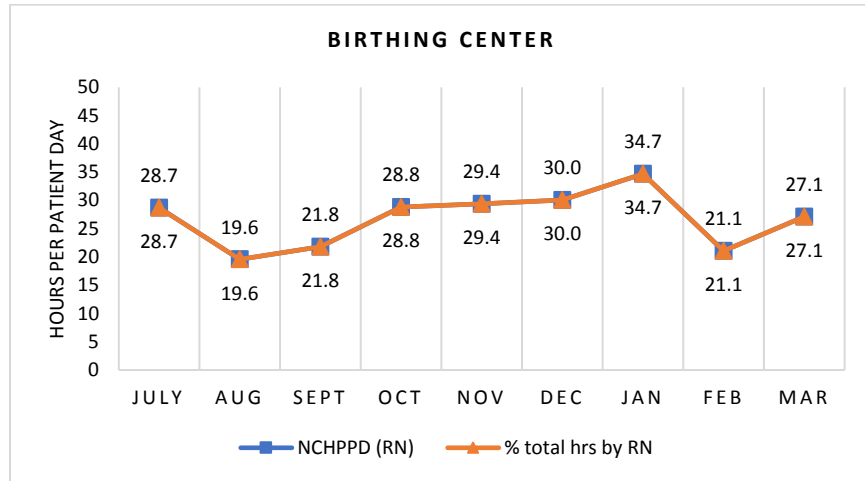


## GIFFORD MEDICAL CENTER Birthing Center Unit

The Birthing Center Unit has 4 licensed beds with the option of flexing to five beds when necessary. Types of care provided in this unit includes care to low and moderate risk women during the antepartum, intrapartum, and postpartum periods as well as caring for late preterm newborns. When beds are available, women who underwent post OB/GYN surgical procedures are also cared for in this unit.

### Nursing Care Hours per Patient Day (NCHPPD): July 2017\* - March 2018

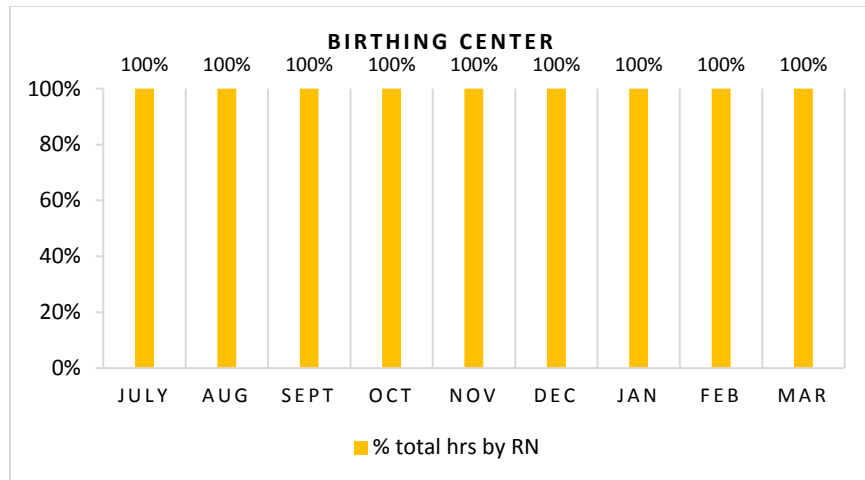
This graph shows the average number of direct nursing care hours provided per patient during a 24-hour period. Results are shown for care provided by registered nurses (RNs) and by all nursing staff (total) by month.



\* The Department began the collection of data on this unit in July 2017.

### Percent of Total Nursing Care Hours Provided by RNs: July 2017 - March 2018

This graph shows the percentage of total nursing hours provided by RNs each month. Yearly average for this period is 100%.



**Historical data on RN and Total Nursing Care Hours per Patient Day, Percent of Total Nursing Care Hours Provided by RNs, for the Birthing Center are not yet available.**

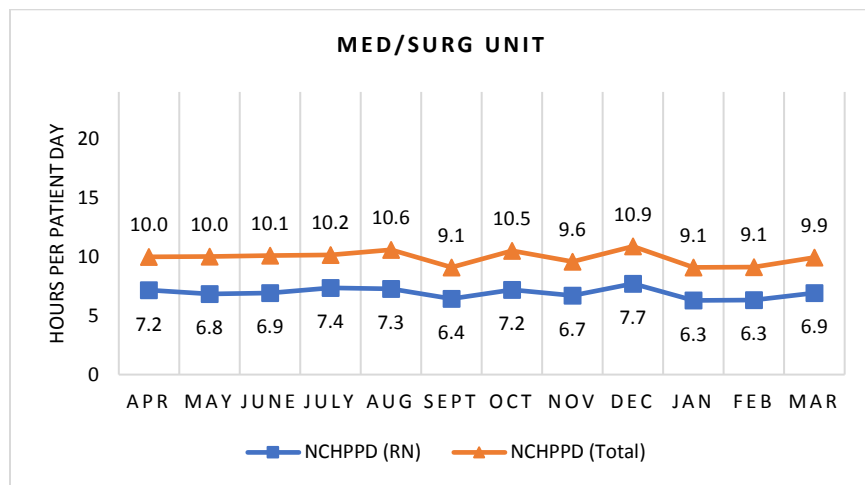
2018 Nurse Staffing Data

**GIFFORD MEDICAL CENTER**  
**Medical/Surgical Unit**

The Medical/Surgical Unit has 25 licensed beds and cares for patients of all ages. Types of services provided in this setting include care of people with general medical and surgical problems, heart monitoring, end-of-life care, and rehabilitative care. Short-term care for people who cannot manage independently in their homes (Swing Bed Patients) is also provided.

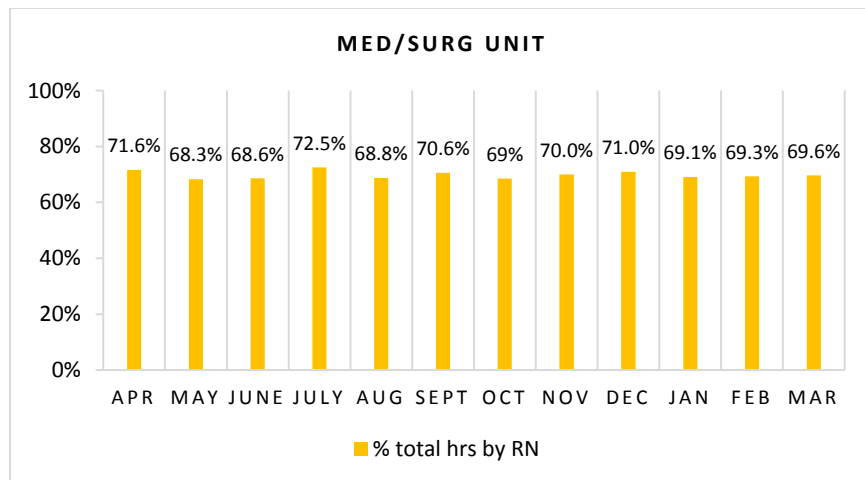
**Nursing Care Hours per Patient Day (NCHPPD): April 2017 - March 2018**

This graph shows the average number of direct nursing care hours provided per patient during a 24-hour period. Results are shown for care provided by registered nurses (RNs) and by all nursing staff (total) by month.



**Percent of Total Nursing Care Hours Provided by RNs: April 2017 - March 2018**

This graph shows the percentage of total nursing hours provided by RNs each month. Yearly average for this period is 69.8%.



## 2018 Nurse Staffing Data

### Yearly Average of RN and Total Nursing Care Hours per Patient Day, Percent of Total Nursing Care Hours Provided by RNs, 2010 - 2018

The graph below shows trend over time on the average RN and total nursing care hours per patient days, and average percentage of nursing care that was provided by RN.

