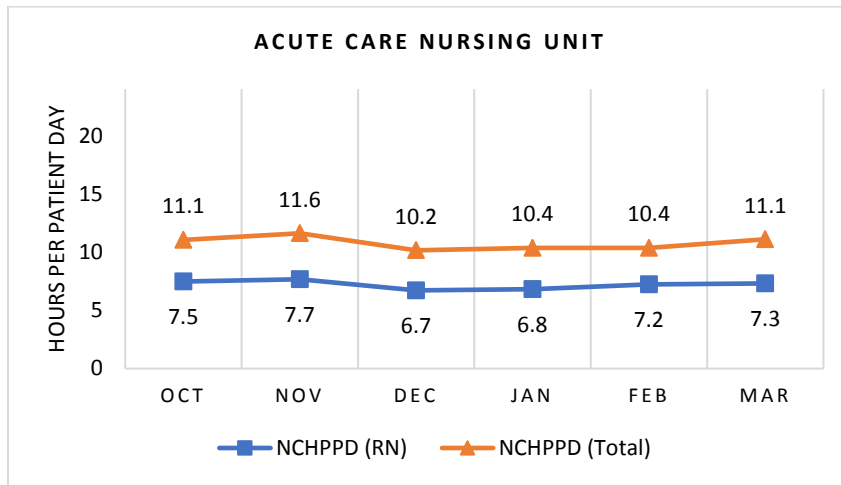


COPLEY HOSPITAL
Acute Care Nursing Unit

Copley’s Medical/Surgical Unit and Special Care Unit merged to create a 21 licensed bed Acute Care Nursing Unit in October 2017, caring for patients of all ages. Types of services provided include care of people with general medical/surgical issues with an acuity adaptable care model being able to provide a higher level of care if needed that may require additional monitoring. We also provide end-of-life care, rehabilitative care, skilled nursing level of care, and care for stable and uncomplicated pediatric patients.

Nursing Care Hours per Patient Day (NCHPPD): October* 2017 - March 2018

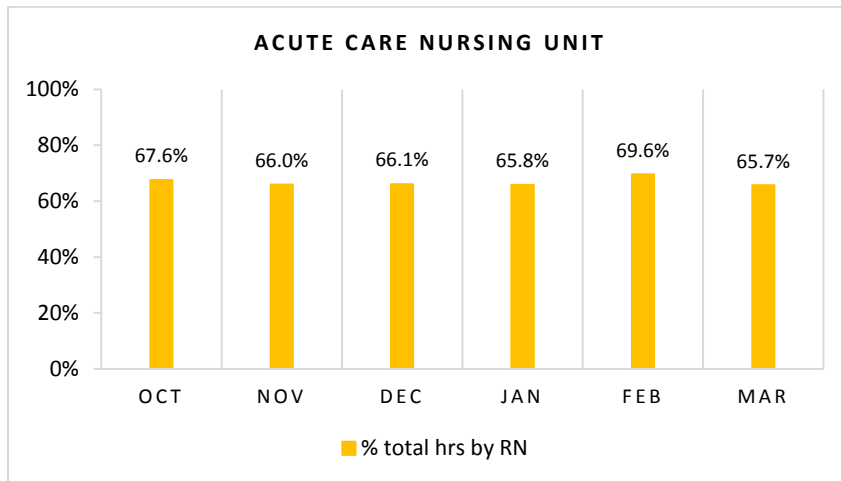
This graph shows the average number of direct nursing care hours provided per patient during a 24-hour period. Results are shown for care provided by registered nurses (RNs) and by all nursing staff (total) by month.



* The Department began collecting data on this unit in October 2017.

Percent of Total Nursing Care Hours Provided by RNs: October 2017 - March 2018

This graph shows the percentage of total nursing hours provided by RNs each month. Average for this period is 66.8%.



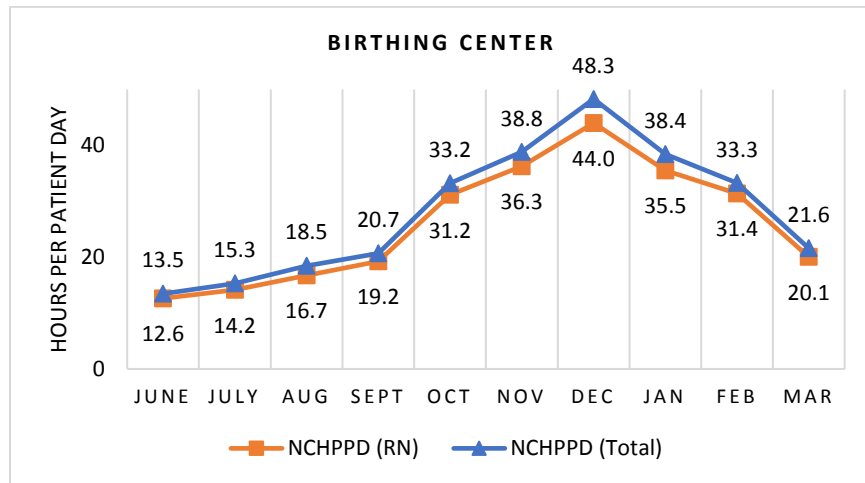
Historical data on RN and Total Nursing Care Hours per Patient Day, Percent of Total Nursing Care Hours Provided by RNs for the Acute Care Nursing Unit, are not yet available.

COPLEY HOSPITAL
Birthing Center Unit

The Birthing Center Unit has 4 licensed beds for labor, delivery, recovery, and postpartum care. Providing care to low risk patients. Also providing lactation support and car seat fittings.

Nursing Care Hours per Patient Day (NCHPPD): June 2017* - March 2018

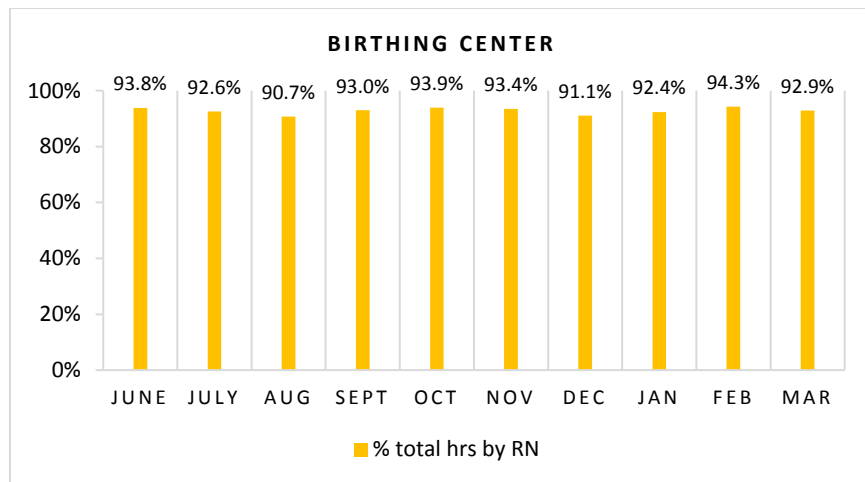
This graph shows the average number of direct nursing care hours provided per patient during a 24-hour period. Results are shown for care provided by registered nurses (RNs) and by all nursing staff (total) by month.



* The Department began collecting data on this unit in June 2017.

Percent of Total Nursing Care Hours Provided by RNs: June 2017 - March 2018

This graph shows the percentage of total nursing hours provided by RNs each month. Yearly average for this period is 92.8%.



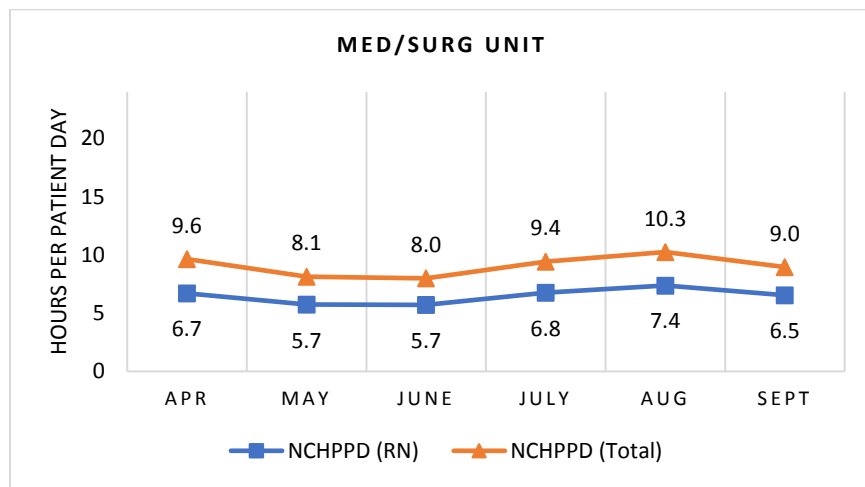
Historical data on RN and Total Nursing Care Hours per Patient Day, Percent of Total Nursing Care Hours Provided by RNs, are not yet available.

COPLEY HOSPITAL
Medical/Surgical Unit

The Medical/Surgical unit has 15 licensed beds and cares for patients of all ages. Types of services provided in this setting include care of people with general medical and surgical problems, care of stable and uncomplicated pediatric patients, end-of-life care, rehabilitative care, and skilled nursing facility care. This unit has discontinued in September 2017 to merge with SCU to form a new unit “Acute Care Nursing Unit” starting October 2017.

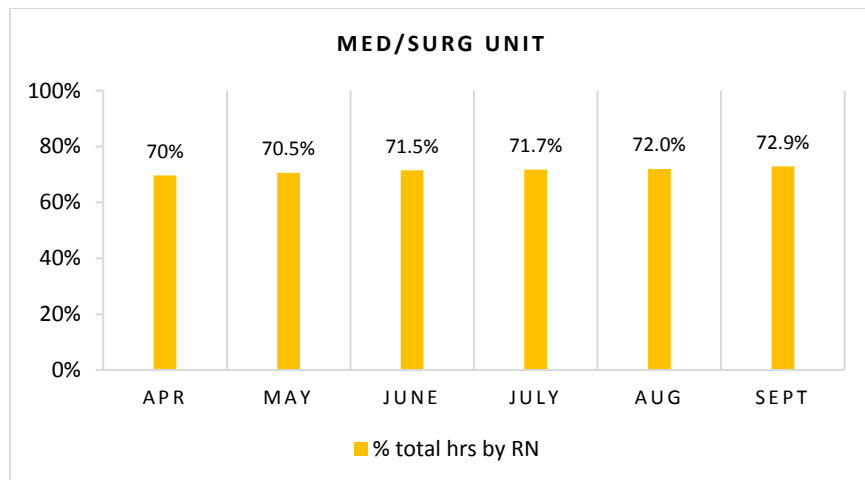
Nursing Care Hours per Patient Day (NCHPPD): April - September 2017

This graph shows the average number of direct nursing care hours provided per patient during a 24-hour period. Results are shown for care provided by registered nurses (RNs) and by all nursing staff (total) by month.



Percent of Total Nursing Care Hours Provided by RNs: April - September 2017

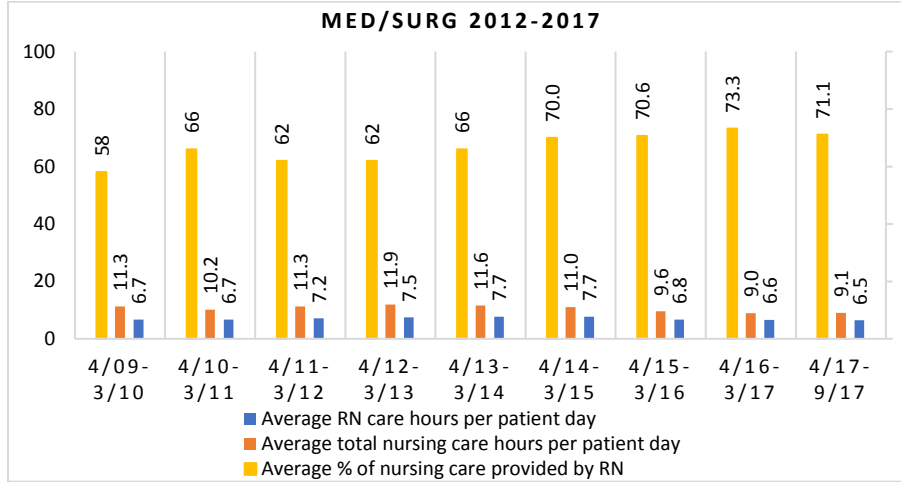
This graph shows the percentage of total nursing hours provided by RNs each month. Yearly average for this period is 71.1%.



2018 Nurse Staffing Data

Yearly Average of RN and Total Nursing Care Hours per Patient Day, Percent of Total Nursing Care Hours Provided by RNs, 2012 - 2017

The graph below shows trend over time on the average RN and total nursing care hours per patient days, and average percentage of nursing care that was provided by RN.

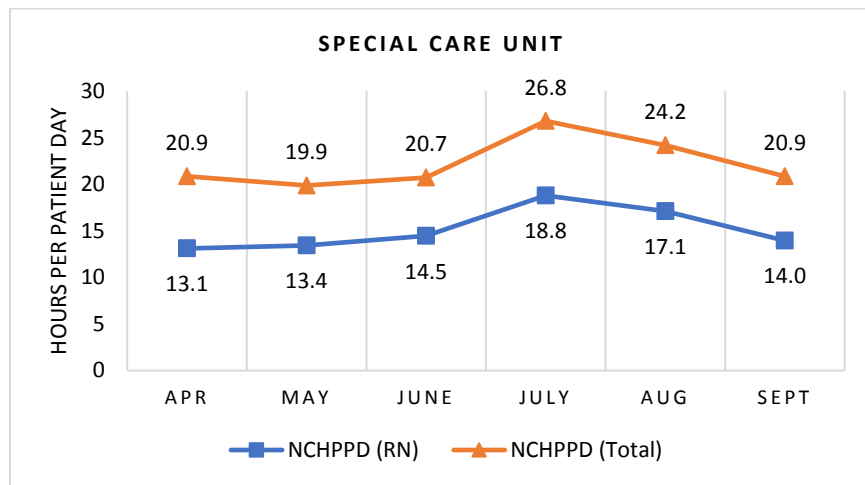


COPLEY HOSPITAL Special Care Unit

The Special Care Unit has 6 licensed beds. Types of services provided in this setting include care of people with, or at risk of developing life-threatening problems. The SCU has discontinued in September 2017 to merge with Med/Surg Unit on the same floor to form a new “Acute Care Nursing Unit” starting October 2017.

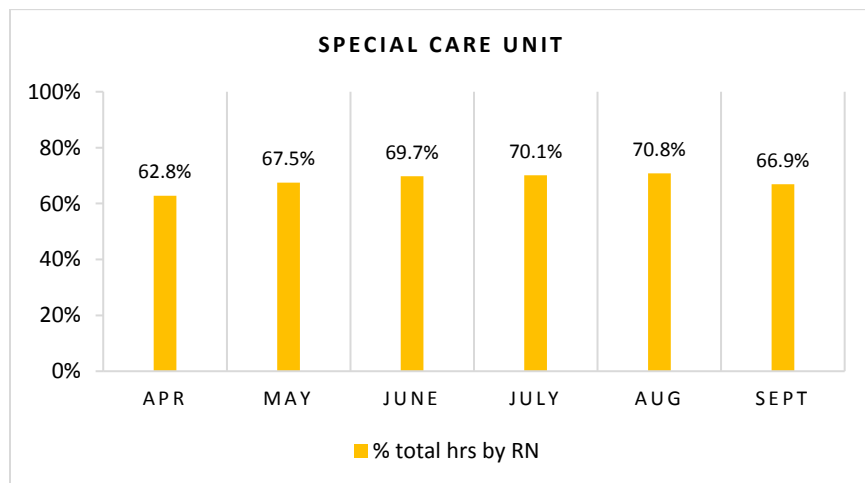
Nursing Care Hours per Patient Day (NCHPPD): April - September 2017

This graph shows the average number of direct nursing care hours provided per patient during a 24-hour period. Results are shown for care provided by registered nurses (RNs) and by all nursing staff (total) by month.



Percent of Total Nursing Care Hours Provided by RNs: April - September 2017

This graph shows the percentage of total nursing hours provided by RNs each month. Yearly average for this period is 68.2%.



2018 Nurse Staffing Data

Yearly Average of RN and Total Nursing Care Hours per Patient Day, Percent of Total Nursing Care Hours Provided by RNs, 2010 - 2017

The graph below shows trend over time on the average RN and total nursing care hours per patient days, and average percentage of nursing care that was provided by RN.

