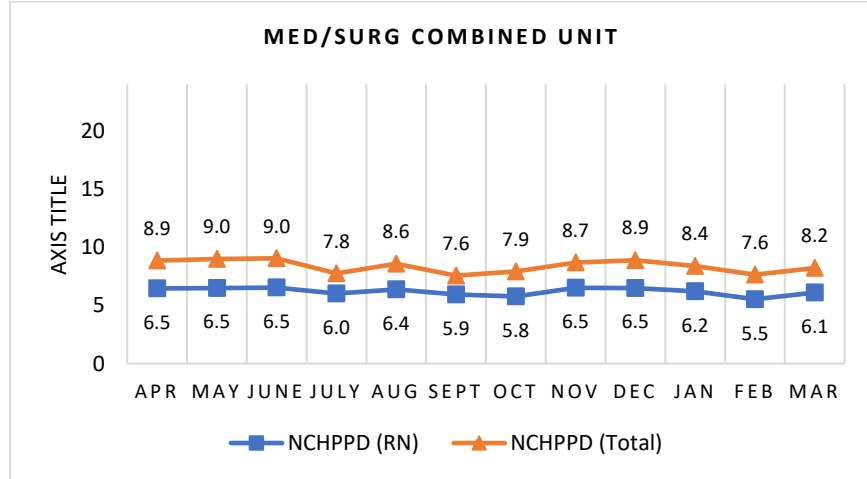


PORTER MEDICAL CENTER
Medical/Surgical Combined Unit

The Medical/Surgical Combined Unit has 21 licensed beds and cares for adult patients. Types of services provided in this setting include care of people with, or at risk of developing life-threatening problems.

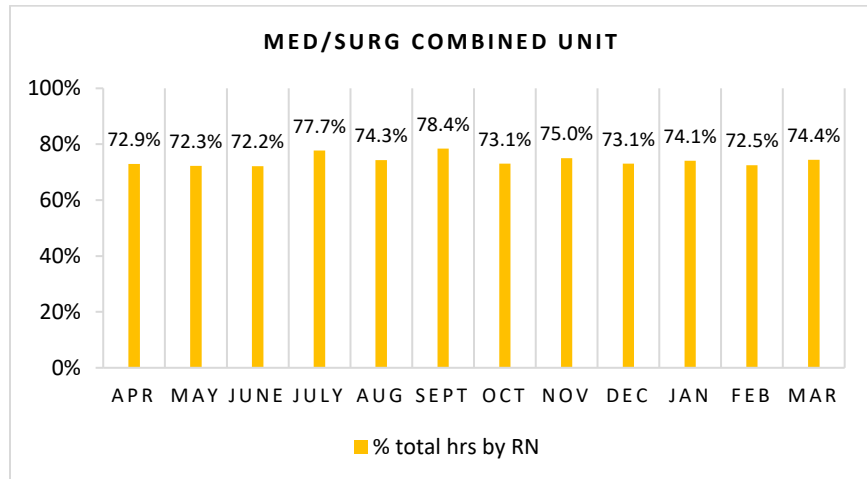
Nursing Care Hours per Patient Day (NCHPPD): April 2018 - March 2019

This graph shows the average number of direct nursing care hours provided per patient during a 24-hour period. Results are shown for care provided by registered nurses (RNs) and by all nursing staff (total) by month.



Percent of Total Nursing Care Hours Provided by RNs: April 2018 - March 2019

This graph shows the percentage of total nursing hours provided by RNs each month. Yearly average for this period is 74.2%.



2019 Nurse Staffing Data

Yearly Average RN and total nursing care hours per patient day, Percent of Total Nursing Care Hours Provided by RNs, 2016-2019

The graph below shows trend over time on the average RN and total nursing care hours per patient days, and average percentage of nursing care that was provided by RN.

