

Mission

Reduce the burden of opioids in our community by creating a coordinated system of care to prevent addiction, treat individuals and their families suffering from substance use disorder and support recovery.

Vision

A substance abuse prevention, treatment and recovery system of care, that is timely, coordinated and comprehensive.

Five Conditions of Collective Impact:

1. Common Agenda = Agreed upon actions
2. Shared Measurement = Measuring results
3. Mutually Reinforcing Activities = Plan of action
4. Continuous Communication = Consistent communication
5. Backbone Support = Coordination

Phases of Collective Impact			
Components for Success	PHASE I Initiate Action	PHASE II Organize for Impact	PHASE III Sustain Action and Impact
<i>Governance and Infrastructure</i>	Identify champions and form cross-sector group	Create infrastructure (backbone and processes)	Facilitate and refine
<i>Strategic Planning</i>	Map the landscape and use data to make case	Create common agenda (goals and strategy)	Support implementation (alignment to goals and strategies)
<i>Community Involvement</i>	Facilitate community outreach	Engage community and build public will	Continue engagement and conduct advocacy
<i>Evaluation and Improvement</i>	Analyze baseline data to identify key issues and gaps	Establish shared metrics (indicators, measurement, and approach)	Collect, track, and report progress (process to learn and improve)

Backbone Support

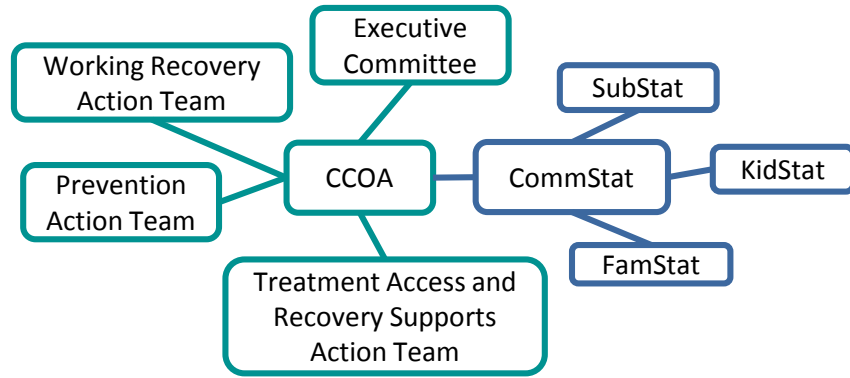
Our Team: Executive Director, Data Analyst, Communications/Administration Coordinator

Our Role:

1. Providing overall strategic direction
2. Facilitating dialogue between partners
3. Managing data collection and analysis
4. Handling communications
5. Coordinating community outreach
6. Mobilizing funding

Executive Committee

Acts as the governance body for the Alliance – reviewing annual plans and budgets, and coordinating with the Action Teams to ensure synergy with the Alliance’s mission and strategic plan.



Action Teams

Prevention

Strengthen existing local partnerships to create new opportunities and structures in Chittenden County that will bring additional evidence-informed environmental prevention and individual prevention strategies to our area.

Treatment Access and Recovery Support

Identifies barriers, and solutions and strategies to create seamless, efficient and timely access to appropriate treatment and recovery supports, as well as developing specific recommendations for policy reform and systems change.

Working Recovery

Works to connect with local-area employers and individuals with lived experience (in and out of the workforce) to better understand the best workplace supports for individuals in recovery. This team will provide guidelines for resources and necessary supports for both the employee and the employer to maintain employment in recovery.

CommunityStat

Provides coordination of effort among law enforcement, public health and safety and human service providers to better address the fallout of opioid use in Chittenden County. This will be accomplished through an adaptation of a “CitiStat” management tool model and will use these guiding principles:

1. Timely and accurate intelligence and information
2. Effective tactics
3. Rapid deployment of resources
4. Relentless follow-up and assessment