

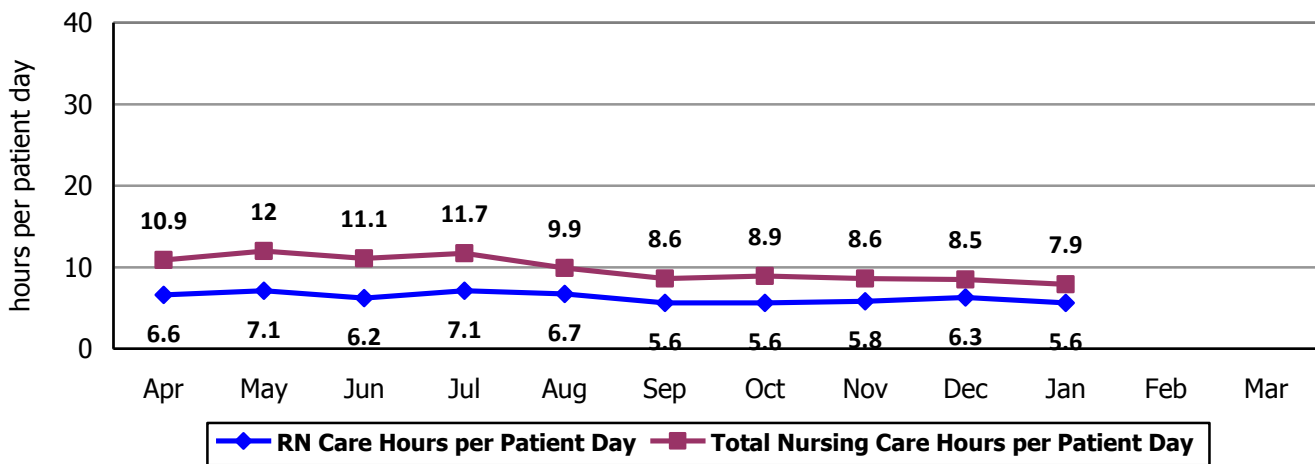
2016 Hospital Report Card Nurse Staffing Data
Porter Hospital

PORTER HOSPITAL - MEDICAL/SURGICAL UNIT

The Medical/Surgical Unit at Porter Hospital has 19 licensed beds and 10 observation stretchers and cares for patients of all ages. Types of services provided in this setting may include: care of people with general medical and surgical problems; heart monitoring; end-of-life care; and rehabilitative care.

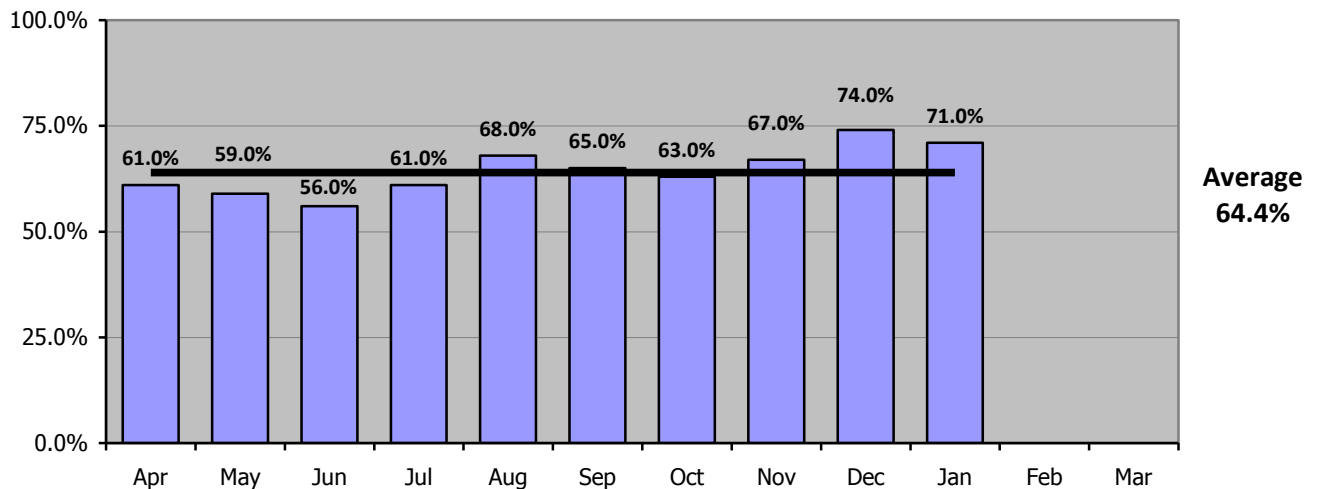
Nursing Care Hours per Patient Day: April 2015 - March 2016

The following graph shows the average number of direct nursing care hours provided per patient during a 24-hour period. Results are shown for each month, for care provided by registered nurses and by all nursing staff.



Percent of Total Nursing Care Hours Provided by RNs: April 2015 - March 2016

The following graph shows the percentage of total nursing hours provided by registered nurses, including the average for this unit.



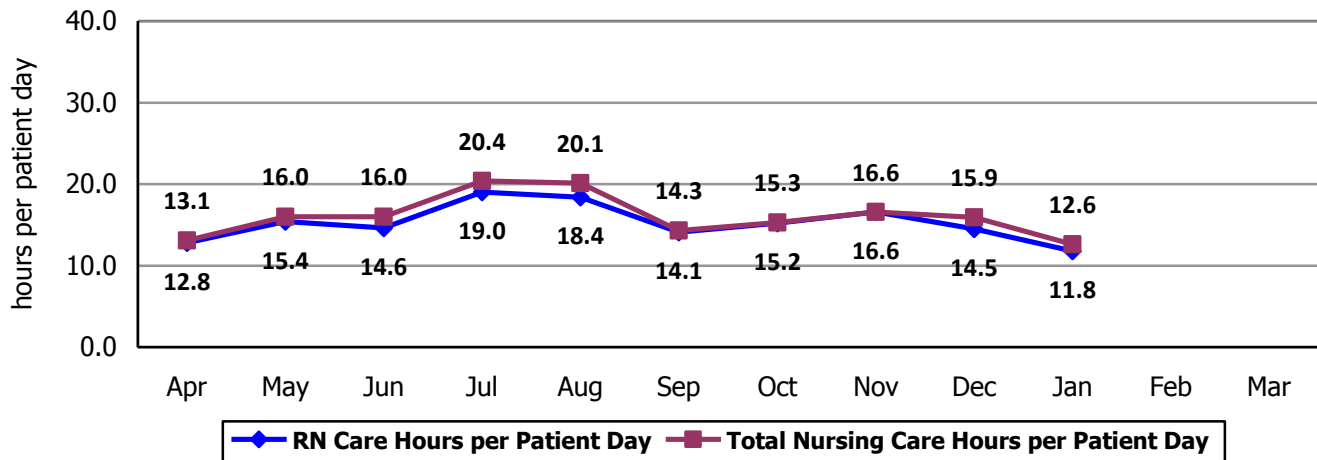
2016 Hospital Report Card Nurse Staffing Data
Porter Hospital

PORTER HOSPITAL – SPECIAL CARE UNIT

The Special Care Unit at Porter Hospital has 2 licensed beds and serves adult patients. Types of services provided in this setting include care of people with, or at risk of developing, life-threatening problems.

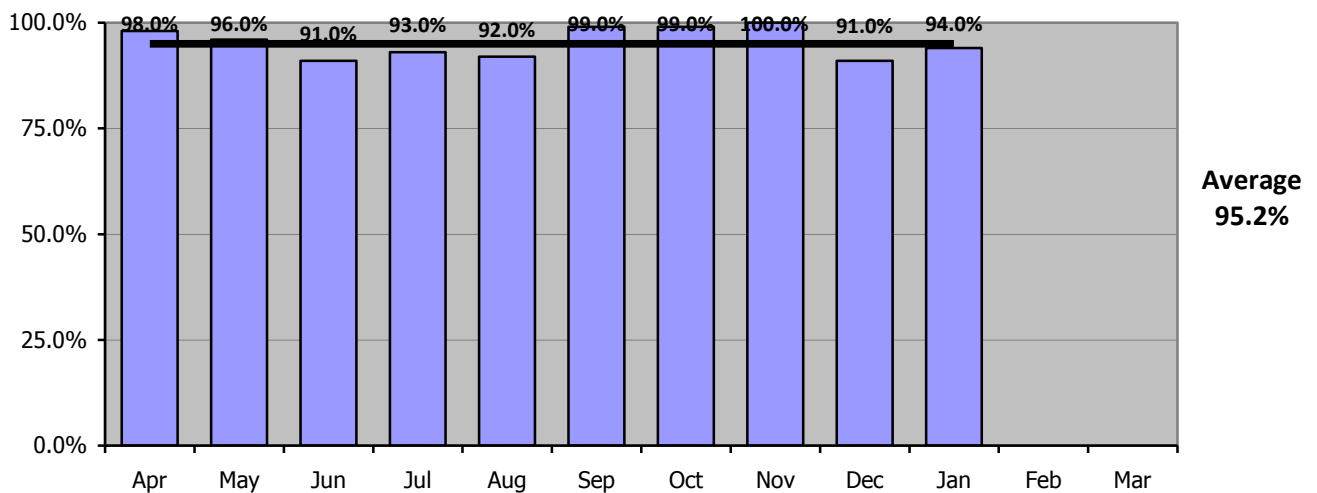
Nursing Care Hours per Patient Day: April 2015 - March 2016

The following graph shows the average number of direct nursing care hours provided per patient during a 24-hour period. Results are shown for each month, for care provided by registered nurses and by all nursing staff.



Percent of Total Nursing Care Hours Provided by RNs: April 2015 - March 2016

The following graph shows the percentage of total nursing hours provided by registered nurses, including the average for this unit.



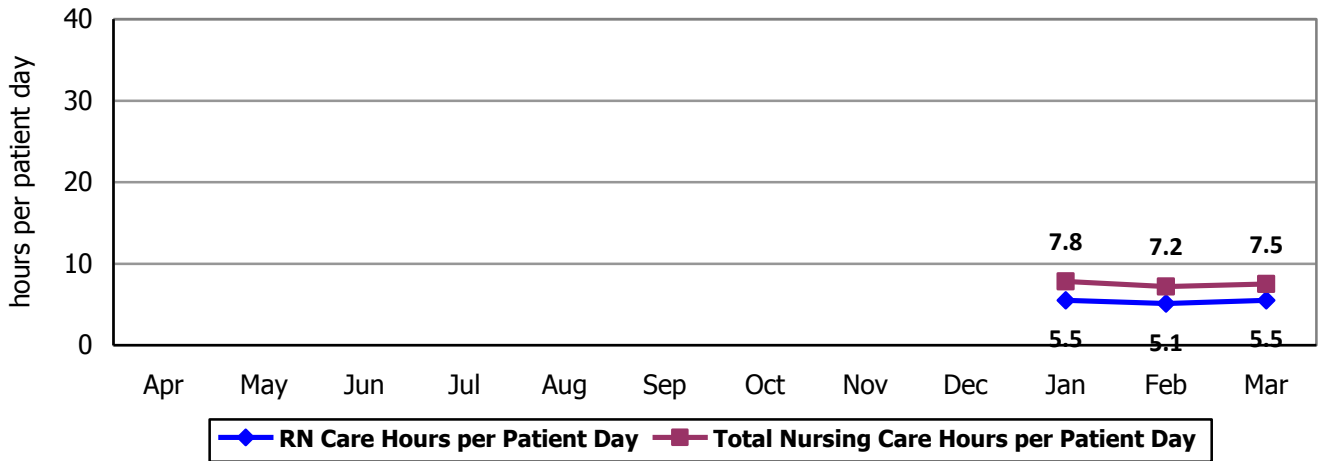
2016 Hospital Report Card Nurse Staffing Data
Porter Hospital

PORTER HOSPITAL – COMBINED UNIT

The Combined Unit at Porter Hospital has 21 licensed beds and serves adult patients. Types of services provided in this setting include care of people with, or at risk of developing, life-threatening problems. The unit went through some changes in January of 2016 combining the beds for the Medical Surgical Unit and the Special Care Unit or SCU. Data for the Unit begins in the month of January.

Nursing Care Hours per Patient Day: April 2015 - March 2016

The following graph shows the average number of direct nursing care hours provided per patient during a 24-hour period. Results are shown for each month, for care provided by registered nurses and by all nursing staff.



Percent of Total Nursing Care Hours Provided by RNs: April 2015 - March 2016

The following graph shows the percentage of total nursing hours provided by registered nurses, including the average for this unit.

