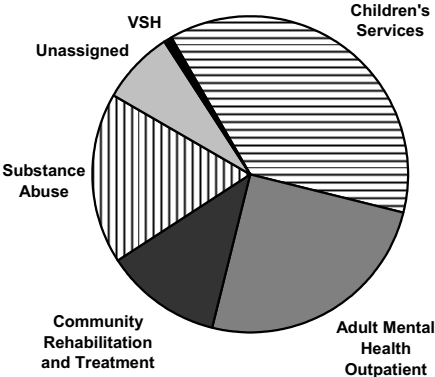


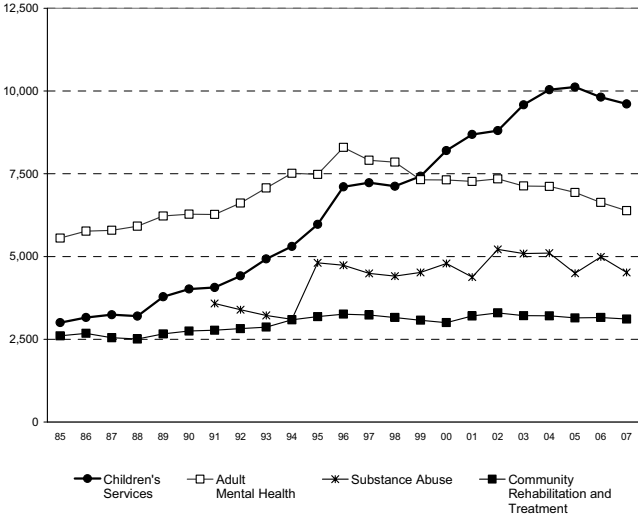
**FY 2007**  
**Statistical**  
**Report**

VERMONT AGENCY OF HUMAN SERVICES  
 DEPARTMENT OF MENTAL HEALTH

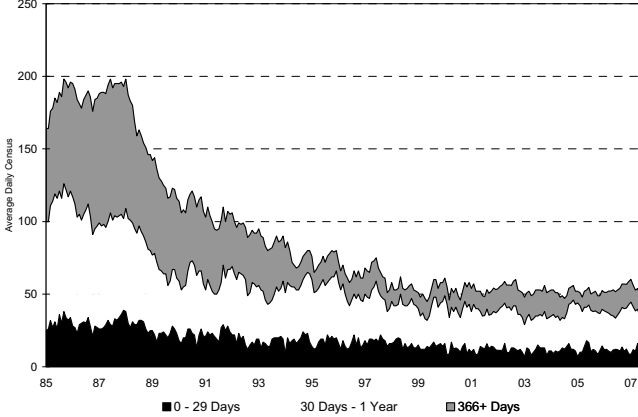
**CLIENTS SERVED**  
by Primary Program Assignment



**COMMUNITY PROGRAMS**  
Clients Served per Year



**VERMONT STATE HOSPITAL**  
Patient Days by Length of Stay



VERMONT AGENCY OF HUMAN SERVICES

DEPARTMENT OF MENTAL HEALTH

108 Cherry St  
Burlington, Vermont 05401

Michael Hartman  
Commissioner

FISCAL YEAR 2007

STATISTICAL REPORT

October 31, 2007

Prepared by:

John A. Pandiani, PhD  
Chief of Mental Health Research and Statistics  
Vermont Department of Health

Barbara B. Carroll, EdD  
Brennan D. Martin, MPH  
Public Health Analysts

Program Advisors:

Alice Maynard, MA  
Melinda Murtaugh, PhD  
Linda Piasecki, MA

## INTRODUCTION

The Vermont Department of Mental Health (DMH) Statistical Report presents a systematic quantitative overview of the clients and services of the Department's service delivery system for FY2007. This report is intended to function as a reference document for administrators, policymakers, and other interested parties. Annual statistical reports have been published since 1985. Together, these reports provide a detailed history of the development of systems of community care for people in need of mental health services and the decline in the amount of publicly funded institutional care.

The report consists of three major statistical sections followed by detailed notes that provide the definitions, methodological specifications, and caveats that are necessary to interpret the statistical results. The first section presents a comparative overview of the major programs. The next two sections provide more detailed descriptions for community service programs and the Vermont State Hospital.

The community service data presented in this report were provided by the state's Designated Community Service Providers, and the Vermont State Hospital (VSH) inpatient data came directly from the VSH Treatment Episode Dataset. Inpatient data are based on a complete enumeration of clients and services. Community service data, on the other hand, may be less than complete. Some community service clients who received only emergency brief service may have been excluded from reports submitted by some participating agencies.

All of the data in this report should be considered in light of the detailed notes presented in Part 4. Part 4 provides definitions of terms used in this report as well as cautions that should be observed when interpreting the data. Where appropriate, instances and sources of irregularity in the data are identified. When the data are considered in light of the accompanying notes, they should provide a complete and accurate overview of the clients and activities of designated agencies.

Part 1 presents an overview of Vermont's service delivery system. The tables provide data on the number and characteristics (both demographic and clinical) of clients served and a summary of services provided. The major programs include Children's Services, Adult Mental Health Outpatient, Community Rehabilitation and Treatment, Emergency Services, and Substance Abuse. This report also includes inpatient services provided by VSH. On intake, a client is usually assigned to one community-based program (primary program assignment) although individual clients may receive services from more than one program (program of service). Client demographic and clinical characteristics are presented according to the primary program assignment. Service data are presented according to the program of service and record the number of service events.

Part 2 presents a more detailed description of community clients and services. There are five subsections, one for each of the community programs of service. For each of these programs of service, comparative client data are presented and patterns of service delivery are detailed at the provider level.

Part 3 describes individuals who were in the Vermont State Hospital at any time during FY2007. This section complements the overall description of VSH clients and services presented in Part I by focusing on patients' legal status, the discharge rates of recently admitted patients, and the length of stay for continuing patients. Information on each of these characteristics is presented by clients' catchment area, age, gender, diagnosis and type of admission.

Requests for additional information or analyses may be directed to John A. Pandiani, PhD, Department of Health, 108 Cherry Street, PO Box 70, Burlington, Vermont 05402-0070  
[jpandiani@vdh.state.vt.us](mailto:jpandiani@vdh.state.vt.us) (802) 836-7249

## ACKNOWLEDGMENTS

This report is the result of the cooperative efforts of individuals in every part of Vermont's mental health service delivery systems. The Department of Mental Health is indebted to all who contributed to the development and maintenance of the data systems that made this report possible.

The Directors of Vermont's community service providers and institutions have been responsible for the development and maintenance of their respective Management Information Systems. Their support for the accurate accrual of comparable data has been and continues to be essential. The Department of Mental Health thanks the following administrators for their cooperation and support.

Robert Thorn (CSAC - Addison)  
Ralph Provenza (UCS - Bennington)  
Todd Centybear (HCHS-Chittenden)  
William Alexander (LCMH - Lamoille)  
Eric Grims (NKHS - Northeast)  
Ted Mable (NCSS - Northwest)  
Linda Chambers (CMC - Orange )  
Mark Munson (RMHS - Rutland)  
Judith Hayward (HCRS - Southeast)  
Paul Dupre (WCMH - Washington)  
Chuck Myers (NFI - Northeastern Family Institute)  
Keith Goslant (VSH -Vermont State Hospital)

The Management Information System Database Managers at community service provider agencies and institutions worked closely with Department of Mental Health staff throughout the year to ensure the accuracy and identify the shortcomings of the data. Even more important, their continuing efforts to ensure accurate and uniform coding of service and client data, to streamline paper flow, and to make their Management Information Systems a useful management tool were essential to the completeness and accuracy of this report. During FY2007, the MIS Database Managers included:

Emily Van De Weert (CSAC)  
Andrew Munzer (UCS)  
Russell Stratton (HCHS)  
George Feeney (LCMH)  
Timothy Gould (NKHS)  
Ken Gingras (NCSS)  
Deb Hawley (CMC)  
Nancy Smith (RMHS)  
Warren Sergeant (HCRS)  
Shawn Manwaring (WCMH)  
Matthew Emmons (NFI)  
Wendy Magee (VSH)

## LIST OF TABLES

<u>Table</u>	<u>Title</u>	<u>Page</u>
<b>PART 1: OVERVIEW</b>		
1-1	Number of Clients Served	2
1-2	Clients Served per 1,000 Age-Specific Population	3
1-3	Age of Clients Served	4
1-4	Gender of Clients Served	5
1-5	Annual Family Income of Clients Served	6
1-6	Responsibility for Fee of Clients Served	7
1-7	Diagnosis of Clients Served	8
1-8	Problems of Clients Served	9
1-9	Length of Stay of Clients Served	10
1-10	Clinical Interventions	11
1-10a	Individual, Family and Group Therapy	12
1-10b	Medication and Medical Support and Consultation Services	13
1-10c	Clinical Assessment Services	14
1-11	Day Services	15
1-12	Service Planning and Coordination	16
1-13	Community Supports	17
1-14	Employment Services	18
1-15a	Emergency/Crisis Assessment, Support and Referral	19
1-15b	Emergency/Crisis Beds	20
1-16	Housing and Home Supports	21
1-17	Condition of Clients on Termination of Services	22
<b>PART 2: COMMUNITY PROGRAMS</b>		
2-1	Program of Service of Clients Served Each Month	24
2-2	Primary Program Assignment of Clients Served Each Month	25
2-3	Age and Gender of Clients Served	26
2-4	Responsibility for Fee of Clients Served	27
2-5	Diagnosis of Clients Served	28
2-6	Length of Stay of Clients Served	29
<b>2A: Children's Services Programs</b>		
2A-1	Age and Gender of Clients Served	31
2A-2	Responsibility for Fee of Clients Served	32
2A-3	Diagnosis of Clients Served	33
2A-4	Length of Stay of Clients Served	34
2A-5	Clinical Interventions	35
2A-5a	Individual, Family and Group Therapy	36
2A-5b	Medication and Medical Support and Consultation Services	37
2A-5c	Clinical Assessment Services	38
2A-6	Service Planning and Coordination	39
2A-7	Community Supports	40

Table	Title	Page
	2A: Children's Services Programs (continued)	
2A-8a	Emergency/Crisis Assessment, Support and Referral	41
2A-8b	Emergency/Crisis Beds	42
2A-9	Housing and Home Supports	43
2A-10	Respite Services	44
	2B: Adult Mental Health Outpatient Programs	
2B-1	Age and Gender of Clients Served	46
2B-2	Responsibility for Fee of Clients Served	47
2B-3	Diagnosis of Clients Served	48
2B-4	Length of Stay of Clients Served	49
2B-5	Clinical Interventions	50
2B-5a	Individual, Family and Group Therapy	51
2B-5b	Medication and Medical Support and Consultation Services	52
2B-5c	Clinical Assessment Services	53
2B-6	Service Planning and Coordination	54
2B-7	Community Supports	55
2B-8	Emergency/Crisis Assessment, Support and Referral	56
	2C: Community Rehabilitation and Treatment Programs	
2C-1	Age and Gender of Clients Served	58
2C-2	Responsibility for Fee of Clients Served	59
2C-3	Diagnosis of Clients Served	60
2C-4	Length of Stay of Clients Served	61
2C-5	Clinical Interventions	62
2C-5a	Individual, Family and Group Therapy	63
2C-5b	Medication and Medical Support and Consultation Services	64
2C-5c	Clinical Assessment Services	65
2C-6	Day Services	66
2C-7	Service Planning and Coordination	67
2C-8	Community Supports	68
2C-9	Employment Services	69
2C-10a	Emergency/Crisis Assessment, Support and Referral	70
2C-10b	Emergency/Crisis Beds	71
2C-11	Housing and Home Supports	72
	2D: Substance Abuse Programs	
2D-1	Age and Gender of Clients Served	74
2D-2	Responsibility for Fee of Clients Served	75
2D-3	Diagnosis of Clients Served	76
2D-4	Length of Stay of Clients Served	77
2D-5	Clinical Interventions	78
2D-5a	Individual, Family and Group Therapy	79
2D-5b	Medication and Medical Support and Consultation Services	80
2D-5c	Clinical Assessment Services	81

<u>Table</u>	<u>Title</u>	<u>Page</u>
	2D: Substance Abuse Programs (continued)	
2D-6	Day (Intensive Outpatient) Services	82
2D-7	Service Planning and Coordination	83
2D-8	Community Supports	84
2D-9	Emergency/Crisis Assessment, Support and Referral	85
	2E: Emergency Service Programs	
2E-1	Clinical Interventions	87
2E-2	Service Planning and Coordination	88
2E-3	Community Supports	89
2E-4a	Emergency/Crisis Assessment, Support and Referral	90
2E-4b	Emergency/Crisis Beds	91
 PART 3: VERMONT STATE HOSPITAL		
3-1	Average Daily Census	93
3-2	Monthly Utilization	94
3-3	Catchment Area and Utilization	95
3-4	Age and Utilization	96
3-5	Gender and Utilization	97
3-6	Diagnosis and Utilization	98
3-7	Legal Status on Admission and Utilization	99
3-8	Type of Admission and Utilization	100
3-9	Catchment Area and Legal Status of Patients Admitted	101
3-10	Age and Legal Status of Patients Admitted	102
3-11	Gender and Legal Status of Patients Admitted	103
3-12	Diagnosis and Legal Status of Patients Admitted	104
3-13	Type of Admission and Legal Status of Patients Admitted	105
3-14	Catchment Area and Discharge Rate of Patients Admitted	106
3-15	Age and Discharge Rate of Patients Admitted	107
3-16	Gender and Discharge Rate of Patients Admitted	108
3-17	Diagnosis and Discharge Rate of Patients Admitted	109
3-18	Legal Status and Discharge Rate of Patients Admitted	110
3-19	Type of Admission and Discharge Rate of Patients Admitted	111
3-20	Catchment Area and Length of Stay of Patients in Residence at End of Year	112
3-21	Age and Length of Stay of Patients in Residence at End of Year	113
3-22	Gender and Length of Stay of Patients in Residence at End of Year	114
3-23	Diagnosis and Length of Stay of Patients in Residence at End of Year	115
3-24	Legal Status and Length of Stay of Patients in Residence at End of Year	116
3-25	Type of Admission and Length of Stay of Patients in Residence at End of Year	117

PART 4: NOTES

Page

OVERVIEW

1. The Scope of This Report	119
2. Community Provider Agencies	120
3. Clients Served	120
4. Age	122
5. Income	122
6. Responsibility for Fee	122
7. Diagnosis	123
8. Problems	124
9. Length of Stay	124

TYPES OF SERVICE

10. Clinical Interventions	124
11. Day Services	125
12. Service Planning and Coordination	125
13. Community Supports	125
14. Employment Services	126
15. Crisis Services	126
16. Housing and Home Supports	126
17. Respite Services	127
18. Condition on Termination	127

VERMONT STATE HOSPITAL

19. Admissions and Discharges	127
20. Legal Status	127
21. Type of Admission	129
22. Discharge Rate	129
23. Length of Stay	129

# Part 1: Overview

**CLIENTS SERVED**  
by Primary Program Assignment

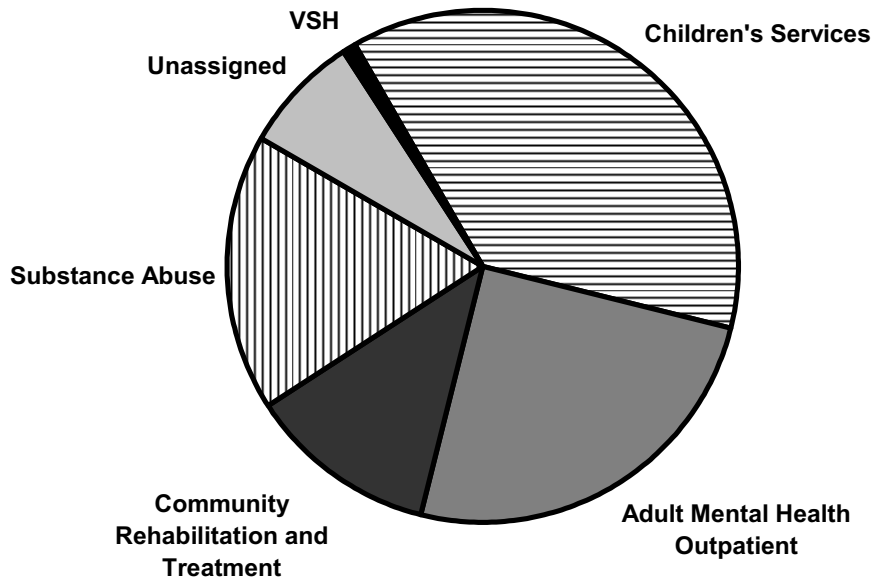


TABLE 1-1

Vermont Agency of Human Services  
Department of Mental Health

**NUMBER OF CLIENTS SERVED**  
by Clients' Primary Program Assignment and Designated Agency  
Fiscal Year 2007

<u>Designated Agency</u>	<u>Children's Services</u>	<u>Adult MH Outpatient</u>	<u>Community Rehabilitation</u>	<u>Substance Abuse</u>	<u>Unassigned</u>	<u>State Hospital</u>
CSAC (Addison)	909	631	184	258	2	5
NCSS (Northwest)	1,161	1,090	240	0	2	17
HCHS (Chittenden)	2,029	547	660	1,591	464	64
LCMH (Lamoille)	430	146	142	0	168	5
HCRS (Southeast)	1,285	694	385	566	520	32
NKHS (Northeast)	806	687	376	639	275	24
CMC (Orange)	575	520	188	455	10	5
RMHS (Rutland)	961	642	302	611	8	21
UCS (Bennington)	563	803	189	395	157	16
WCMH (Washington)	769	624	443	0	281	40
Northeastern Family Institute	121	0	0	0	0	0
Out of State	-	-	-	-	-	2
<u>Total</u>	9,609	6,384	3,109	4,515	1,887	231

See notes 1, 2 and 3.

TABLE 1-2

Vermont Agency of Human Services  
Department of Mental Health

**CLIENTS SERVED PER 1,000 AGE-SPECIFIC POPULATION**

by Clients' Primary Program Assignment

Fiscal Year 2007

<u>Designated Agency</u>	<u>Children's Services<sup>a</sup></u>	<u>Adult MH Outpatient<sup>b</sup></u>	<u>Community Rehabilitation<sup>b</sup></u>	<u>Substance Abuse<sup>b</sup></u>	<u>Unassigned<sup>c</sup></u>	<u>State Hospital<sup>b</sup></u>
CSAC (Addison)	113.0	21.8	6.4	8.9	0.1	0.2
NCSS (Northwest)	84.5	26.0	5.7	0.0	0.0	0.4
HCHS (Chittenden)	63.3	4.7	5.6	13.5	3.1	0.5
LCMH (Lamoille)	81.1	7.6	7.4	0.0	6.9	0.3
HCRS (Southeast)	61.4	8.5	4.7	7.0	5.1	0.4
NKHS (Northeast)	57.8	13.5	7.4	12.6	4.3	0.5
CMC (Orange)	90.8	22.7	8.2	19.8	0.3	0.2
RMHS (Rutland)	73.9	12.7	6.0	12.0	0.1	0.4
UCS (Bennington)	73.1	27.4	6.5	13.5	4.2	0.5
WCMH (Washington)	61.9	13.3	9.4	0.0	4.7	0.8
Out of State						NA
<u>Total</u>	72.0	13.0	6.4	9.2	3.0	0.5

<sup>a</sup> Rate based on child population (age 0-17)

<sup>b</sup> Rate based on adult population (age 18+)

<sup>c</sup> Rate based on total population

See note 1, and particularly notes 2 and 3.

TABLE 1-3

Vermont Agency of Human Services  
 Department of Mental Health

**AGE OF CLIENTS SERVED**  
 by Clients' Primary Program Assignment  
 Fiscal Year 2007

	<u>Children's Services</u>	<u>Adult MH Outpatient</u>	<u>Community Rehabilitation</u>	<u>Substance Abuse</u>	<u>Unassigned</u>	<u>State Hospital</u>
<u>Age</u>						
0-12	51%	0%	0%	0%	4%	0%
13-19	47%	4%	1%	14%	15%	2%
20-34	2%	31%	19%	45%	35%	33%
35-49	0%	32%	37%	31%	29%	38%
50-64	0%	20%	33%	9%	13%	21%
65+	0%	14%	10%	1%	4%	6%
Total	100%	100%	100%	100%	100%	0%
<u>Age Data Reported</u>						
Clients	9,600	6,383	3,108	4,514	1,877	231
Percent within Program	100%	100%	100%	100%	99%	100%
<u>No Age Data</u>						
Clients	9	1	1	1	10	0
Percent within Program	0%	0%	0%	0%	1%	0%
<u>Grand Total</u>	9,609	6,384	3,109	4,515	1,887	231

See notes 1, 3 and 4.

TABLE 1-4

Vermont Agency of Human Services  
Department of Mental Health

**GENDER OF CLIENTS SERVED**  
by Clients' Primary Program Assignment  
Fiscal Year 2007

	<u>Children's Services</u>	<u>Adult MH Outpatient</u>	<u>Community Rehabilitation</u>	<u>Substance Abuse</u>	<u>Unassigned</u>	<u>State Hospital</u>
<u>Gender</u>						
Male	57%	38%	47%	66%	50%	67%
Female	43%	62%	53%	34%	50%	33%
Total	100%	100%	100%	100%	100%	100%
<u>Gender Data Reported</u>						
Clients	9,606	6,377	3,108	4,508	1,877	231
Percent within Program	100%	100%	100%	100%	99%	100%
<u>No Gender Data</u>						
Clients	3	7	1	7	10	0
Percent within Program	0%	0%	0%	0%	1%	0%
<u>Grand Total</u>	9,609	6,384	3,109	4,515	1,887	231

See notes 1 and 3.

TABLE 1-5

Vermont Agency of Human Services  
Department of Mental Health

**ANNUAL FAMILY INCOME OF CLIENTS SERVED**

by Clients' Primary Program Assignment

Fiscal Year 2007

	<u>Children's Services</u>	<u>Adult Outpatient</u>	<u>Community Rehabilitation</u>	<u>Substance Abuse</u>	<u>Unassigned</u>	<u>State Hospital</u>
<u>Income</u>						
\$ 1 - 9,999	21%	38%	64%	37%	38%	-
\$10,000 - 19,999	28%	30%	26%	32%	30%	-
\$20,000 - 29,999	19%	13%	5%	14%	11%	-
\$30,000 +	32%	19%	5%	17%	22%	-
Total	100%	100%	100%	100%	100%	-
<u>Income Data Reported</u>						
Clients	2,864	2,786	2,079	2,619	522	-
Percent within Program	30%	44%	67%	58%	28%	-
<u>No Income Data</u>						
Clients	6,745	3,598	1,030	1,896	1,365	-
Percent within Program	70%	56%	33%	42%	72%	-
<u>Grand Total</u>	9,609	6,384	3,109	4,515	1,887	231

See notes 1, 3 and 5.

TABLE 1-6

Vermont Agency of Human Services  
 Department of Mental Health

**RESPONSIBILITY FOR FEE OF CLIENTS SERVED**

by Clients' Primary Program Assignment  
 Fiscal Year 2007

	<u>Children's Services</u>	<u>Adult MH Outpatient</u>	<u>Community Rehabilitation</u>	<u>Substance Abuse</u>	<u>Unassigned</u>	<u>State Hospital</u>
<u>Responsibility For Fee</u>						
Medicaid	68%	43%	81%	40%	32%	35%
Medicare	0%	22%	48%	4%	8%	32%
Other Insurance	18%	25%	8%	18%	17%	0%
State Agency	1%	2%	8%	29%	2%	-
Non-Insured/Unknown	20%	24%	5%	24%	48%	54%
<b>Total</b>	<b>9,609</b>	<b>6,384</b>	<b>3,109</b>	<b>4,515</b>	<b>1,887</b>	<b>231</b>

See notes 1, 3 and especially 6.

TABLE 1-7

Vermont Agency of Human Services  
Department of Mental Health

**DIAGNOSIS OF CLIENTS SERVED**  
by Clients' Primary Program Assignment  
Fiscal Year 2007

	<u>Children's Services</u>	<u>Adult MH Outpatient</u>	<u>Community Rehabilitation</u>	<u>Substance Abuse</u>	<u>Unassigned</u>	<u>State Hospital</u>
<u>Diagnosis</u>						
Organic Brain Syndrome	1%	5%	2%	13%	7%	14%
Schizophrenia & Other Psychoses	4%	4%	46%	0%	6%	64%
Affective Disorders	19%	50%	43%	9%	44%	36%
Anxiety Disorders	20%	27%	21%	5%	19%	7%
Personality Disorders	1%	5%	19%	1%	4%	29%
Adjustment Disorders	40%	24%	2%	2%	23%	19%
Social Problems	0%	0%	0%	0%	0%	0%
Substance Abuse	6%	15%	30%	89%	22%	47%
Children's Disorders	33%	3%	1%	1%	5%	5%
Other Psychological Disorders	2%	3%	1%	1%	1%	3%
Mental Retardation	4%	1%	2%	0%	1%	10%
<u>Diagnostic Data Reported</u>						
Clients	8,836	6,183	3,039	4,467	1,598	228
Percent within Program	92%	97%	98%	99%	85%	99%
<u>No Diagnostic Data</u>						
Clients	773	201	70	48	289	3
Percent within Program	8%	3%	2%	1%	15%	1%
<u>Grand Total</u>	9,609	6,384	3,109	4,515	1,887	231

See notes 1, 3 and 7. Includes all primary and secondary DSM IV diagnoses.

TABLE 1-8

Vermont Agency of Human Services  
Department of Mental Health

**PROBLEMS OF CLIENTS SERVED**  
by Clients' Primary Program Assignment  
Fiscal Year 2007

	<u>Children's Services</u>	<u>Adult MH Outpatient</u>	<u>Community Rehabilitation</u>	<u>Substance Abuse</u>	<u>Unassigned</u>	<u>State Hospital</u>
<u>Problem Area</u>						
Mood Disorders	44%	66%	64%	45%	46%	-
Thought Disorders	6%	11%	45%	6%	8%	-
Eating Disorders	5%	7%	11%	5%	5%	-
Medical Somatic	21%	37%	39%	28%	19%	-
Alcohol Abuse	7%	13%	21%	58%	21%	-
Drug Abuse	7%	8%	15%	52%	16%	-
Suicidal Tendencies	9%	14%	24%	7%	17%	-
Problems in Daily Living	54%	46%	59%	33%	37%	-
Social/Interpersonal	55%	39%	55%	32%	34%	-
Marital/Family	56%	45%	42%	39%	33%	-
Runaway	7%	1%	4%	4%	4%	-
Criminal	7%	9%	13%	51%	9%	-
Victim	15%	16%	15%	20%	14%	-
<u>Problem Data Reported</u>						
Clients	7,546	4,997	2,552	4,035	1,148	-
Percent within Program	79%	78%	82%	89%	61%	-
<u>No Problem Data</u>						
Clients	2,063	1,387	557	480	739	-
Percent within Program	21%	22%	18%	11%	39%	-
<u>Grand Total</u>	9,609	6,384	3,109	4,515	1,887	231

See notes 1, 3 and 8.

TABLE 1-9

Vermont Agency of Human Services  
Department of Mental Health

**LENGTH OF STAY OF CLIENTS SERVED**  
by Clients' Primary Program Assignment  
Fiscal Year 2007

	<u>Children's Services</u>	<u>Adult MH Outpatient</u>	<u>Community Rehabilitation</u>	<u>Substance Abuse</u>	<u>Unassigned</u>	<u>State Hospital</u>
<u>Year of Admission</u>						
Current Fiscal	37%	45%	7%	63%	73%	77%
Previous Fiscal	29%	22%	10%	27%	18%	15%
3 - 5 Years Earlier	25%	19%	18%	9%	5%	6%
6 - 10 Years Earlier	8%	10%	27%	2%	2%	1%
11+ Years Earlier	1%	5%	37%	0%	1%	1%
<u>Length of Stay Data Reported</u>						
Clients	9,558	6,346	3,104	4,479	1,870	231
Percent within Program	99%	99%	100%	99%	99%	100%
<u>No Length of Stay Data</u>						
Clients	51	38	5	36	17	0
Percent within Program	1%	1%	0%	1%	1%	0%
<u>Grand Total</u>	9,609	6,384	3,109	4,515	1,887	231

See notes 1, 3 and 9.

TABLE 1-10

Vermont Agency of Human Services  
 Department of Mental Health

**CLINICAL INTERVENTIONS**

by Program of Service  
 Fiscal Year 2007

	<u>Children's Services</u>	<u>Adult MH Outpatient</u>	<u>Community Rehabilitation</u>	<u>Substance Abuse</u>	<u>Emergency</u>	<u>State Hospital</u>
<u>Total</u>						
Clients Served	9,909	6,565	3,412	4,962	3,489	231
Number of Nonresidential Services	494,321	62,640	424,187	46,033	12,713	-
<u>Clients Receiving Clinical Interventions</u>						
Clients	5,903	5,925	2,981	4,271	42	-
Percent within Program	60%	90%	87%	86%	1%	-
<u>Number of Clinical Interventions</u>						
Services	53,143	47,457	52,681	29,250	169	-
Percent within Program	11%	76%	12%	64%	1%	-
<u>Clinical Interventions per Client</u>						
Average	9	8	18	7	4	-

See notes 1, 3 and 10.

TABLE 1-10a

Vermont Agency of Human Services  
 Department of Mental Health

**INDIVIDUAL, FAMILY AND GROUP THERAPY**  
 by Program of Service  
 Fiscal Year 2007

	<u>Children's Services</u>	<u>Adult MH Outpatient</u>	<u>Community Rehabilitation</u>	<u>Substance Abuse</u>	<u>Emergency</u>	<u>State Hospital</u>
<u>Total</u>						
Clients Served	9,909	6,565	3,412	4,962	3,489	231
Number of Nonresidential Services	494,321	62,640	424,187	46,033	12,713	-
<u>Clients Receiving Therapy</u>						
Clients	4,069	4,189	1,233	3,190	34	-
Percent within Program	41%	64%	36%	64%	1%	-
<u>Number of Therapy Sessions</u>						
Services	43,942	36,771	25,154	25,029	55	-
Percent within Program	9%	59%	6%	54%	0%	-
<u>Therapy Sessions per Client</u>						
Average	11	9	20	8	2	-

See notes 1, 3 and 10.

TABLE 1-10b

Vermont Agency of Human Services  
Department of Mental Health

**MEDICATION AND MEDICAL SUPPORT AND CONSULTATION SERVICES**

by Program of Service

Fiscal Year 2007

	<u>Children's Services</u>	<u>Adult MH Outpatient</u>	<u>Community Rehabilitation</u>	<u>Substance Abuse</u>	<u>Emergency</u>	<u>State Hospital</u>
<u>Total</u>						
Clients Served	9,909	6,565	3,412	4,962	3,489	231
Number of Nonresidential Services	494,321	62,640	424,187	46,033	12,713	-
<u>Clients Receiving Medication Svcs.</u>						
Clients	1,521	1,957	2,671	434	6	-
Percent within Program	15%	30%	78%	9%	0%	-
<u>Number of Medication Services</u>						
Services	5,397	7,384	26,826	1,285	110	-
Percent within Program	1%	12%	6%	3%	1%	-
<u>Medication Services per Client</u>						
Average	4	4	10	3	18	-

See notes 1, 3 and 10.

TABLE 1-10c

Vermont Agency of Human Services  
 Department of Mental Health

**CLINICAL ASSESSMENT SERVICES**

by Program of Service  
 Fiscal Year 2007

	<u>Children's Services</u>	<u>Adult MH Outpatient</u>	<u>Community Rehabilitation</u>	<u>Substance Abuse</u>	<u>Emergency</u>	<u>State Hospital</u>
<u>Total</u>						
Clients Served	9,909	6,565	3,412	4,962	3,489	231
Number of Nonresidential Services	494,321	62,640	424,187	46,033	12,713	-
<u>Clients Receiving Clinical Assessment</u>						
Clients	2,627	2,562	559	2,416	4	-
Percent within Program	27%	39%	16%	49%	0%	-
<u>Number of Clinical Assessments</u>						
Services	3,804	3,302	701	2,936	4	-
Percent within Program	1%	5%	0%	6%	0%	-
<u>Clinical Assessments per Client</u>						
Average	1	1	1	1	1	-

See notes 1, 3 and 10.

TABLE 1-11

Vermont Agency of Human Services  
Department of Mental Health

**DAY SERVICES**

by Program of Service

Fiscal Year 2007

	<u>Children's Services</u>	<u>Adult MH Outpatient</u>	<u>Community Rehabilitation</u>	<u>Substance Abuse</u>	<u>Emergency</u>	<u>State Hospital</u>
<u>Total</u>						
Clients Served	9,909	6,565	3,412	4,962	3,489	231
Number of Nonresidential Services	494,321	62,640	424,187	46,033	12,713	-
<u>Clients Receiving Day Services</u>						
Clients	0	106	568	430	0	-
Percent within Program	-	2%	17%	9%	-	-
<u>Number of Day Services</u>						
Services	0	1668	28,836	5,747	0	-
Percent within Program	-	3%	7%	12%	-	-
<u>Day Services per Client</u>						
Average	-	16	51	13	-	-

See notes 1, 3 and 11.

TABLE 1-12

Vermont Agency of Human Services  
 Department of Mental Health

**SERVICE PLANNING AND COORDINATION**

by Program of Service  
 Fiscal Year 2007

	<u>Children's Services</u>	<u>Adult MH Outpatient</u>	<u>Community Rehabilitation</u>	<u>Substance Abuse</u>	<u>Emergency</u>	<u>State Hospital</u>
<u>Total</u>						
Clients Served	9,909	6,565	3,412	4,962	3,489	231
Number of Nonresidential Services	494,321	62,640	424,187	46,033	12,713	-
<u>Clients Receiving Service Planning and Coordination Services</u>						
Clients	6,078	311	2,778	986	251	-
Percent within Program	61%	5%	81%	20%	7%	-
<u>Service Planning and Coordination Services</u>						
Services	121,631	787	67,743	5,047	439	-
Percent within Program	25%	1%	16%	11%	3%	-
<u>Service Planning and Coordination Services per Client</u>						
Average	20	3	24	5	2	-

See notes 1, 3 and 12.

TABLE 1-13

Vermont Agency of Human Services  
Department of Mental Health

**COMMUNITY SUPPORTS**

Fiscal Year 2007  
by Program of Service

	<u>Children's Services</u>	<u>Adult MH Outpatient</u>	<u>Community Rehabilitation</u>	<u>Substance Abuse</u>	<u>Emergency</u>	<u>State Hospital</u>
<u>Total</u>						
Clients Served	9,909	6,565	3,412	4,962	3,489	231
Number of Nonresidential Services	494,321	62,640	424,187	46,033	12,713	-
<u>Clients Receiving Community Supports</u>						
Clients	6,855	1,294	2,945	438	179	-
Percent within Program	69%	20%	86%	9%	5%	-
<u>Number of Community Supports</u>						
Services	300,964	11,344	242,981	3,136	427	-
Percent within Program	61%	18%	57%	7%	3%	-
<u>Community Supports per Client</u>						
Average	44	9	83	7	2	-

See notes 1, 3 and 13.

TABLE 1-14

Vermont Agency of Human Services  
Department of Mental Health

**EMPLOYMENT SERVICES**

by Program of Service

Fiscal Year 2007

	<u>Children's Services</u>	<u>Adult MH Outpatient</u>	<u>Community Rehabilitation</u>	<u>Substance Abuse</u>	<u>Emergency</u>	<u>State Hospital</u>
<u>Total</u>						
Clients Served	9,909	6,565	3,412	4,962	3,489	231
Number of Nonresidential Services	494,321	62,640	424,187	46,033	12,713	-
<u>Clients Receiving Employment Services</u>						
Clients	126	9	1,184	0	0	-
Percent within Program	1%	0%	35%	-	-	-
<u>Number of Employment Services</u>						
Services	2,124	99	21,984	0	0	-
Percent within Program	0%	0%	5%	-	-	-
<u>Employment Services per Client</u>						
Average	17	11	19	-	-	-

See notes 1, 3 and 14.

TABLE 1-15a

Vermont Agency of Human Services  
Department of Mental Health

**EMERGENCY/CRISIS ASSESSMENT, SUPPORT AND REFERRAL**

by Program of Service

Fiscal Year 2007

	<u>Children's Services</u>	<u>Adult MH Outpatient</u>	<u>Community Rehabilitation</u>	<u>Substance Abuse</u>	<u>Emergency</u>	<u>State Hospital</u>
<u>Total</u>						
Clients Served	9,909	6,565	3,412	4,962	3,489	231
Number of Nonresidential Services	494,321	62,640	424,187	46,033	12,713	-
<u>Clients Receiving Emergency/Crisis Services</u>						
Clients	1,624	438	834	682	3,293	-
Percent within Program	16%	7%	24%	14%	94%	-
<u>Number of Emergency/Crisis Services</u>						
Services	10,548	1,285	9,074	2,853	11,678	-
Percent within Program	2%	2%	2%	6%	92%	-
<u>Emergency/Crisis Services per Client</u>						
Average	6	3	11	4	4	-

See notes 1, 3 and 15.

TABLE 1-15b

Vermont Agency of Human Services  
Department of Mental Health

**EMERGENCY/CRISIS BEDS**

by Program of Service  
Fiscal Year 2007

	<u>Children's Services</u>	<u>Adult MH Outpatient</u>	<u>Community Rehabilitation</u>	<u>Substance Abuse</u>	<u>Emergency</u>	<u>State Hospital</u>
<u>Total</u>						
Clients Served	9,909	6,565	3,412	4,962	3,489	231
<u>Clients Receiving Crisis Emergency Beds</u>						
Clients	56	0	155	0	173	-
Percent within Program	1%	0%	5%	-	5%	-
<u>Days of Crisis Emergency Bed Services</u>						
Number	593	0	2,592	0	1,054	-
<u>Emergency Bed Services Days per Client</u>						
Average	11	-	17	-	6	-

See notes 1, 3 and 15.

TABLE 1-16

Vermont Agency of Human Services  
Department of Mental Health

**HOUSING AND HOME SUPPORTS**

by Program of Service  
Fiscal Year 2007

	<u>Children's Services</u>	<u>Adult MH Outpatient</u>	<u>Community Rehabilitation</u>	<u>Substance Abuse</u>	<u>Emergency</u>	<u>State Hospital</u>
<u>Total</u>						
Clients Served	9,909	6,565	3,412	4,962	3,489	231
<u>Clients Receiving Housing Services</u>						
Number	219	0	248	238	0	231
Percent within Program	2%	0%	7%	5%	-	100%
<u>Days of Housing Services</u>						
Number	30,443	0	40,001	1,224	0	20,060
<u>Housing Service Days per Client</u>						
Average	139		161	5	-	87

See notes 1, 3 and 16.

TABLE 1-17

Vermont Agency of Human Services  
Department of Mental Health

**CONDITION OF CLIENTS ON TERMINATION OF SERVICES**

by Clients' Primary Program Assignment

Fiscal Year 2007

	<u>Children's Services</u>	<u>Adult MH Outpatient</u>	<u>Community Rehabilitation</u>	<u>Substance Abuse</u>	<u>Unassigned</u>	<u>State Hospital</u>
<u>Condition on Termination</u>						
Improved	67%	58%	47%	63%	57%	-
Unchanged	28%	38%	39%	32%	34%	-
Worse	5%	4%	14%	5%	9%	-
Total	100%	100%	100%	100%	100%	-
<u>Condition on Termination Data Reported</u>						
Number	1,241	1,024	90	821	375	-
Percent of Discharged Clients	65%	55%	60%	69%	28%	-
<u>No Condition on Termination Data</u>						
Number	682	843	61	375	976	-
Percent of Discharged Clients	35%	45%	40%	31%	72%	-
<u>Total Discharges</u>						
Number	1,923	1,867	151	1,196	1,351	-
Discharge Rate (% of all Clients)	19%	27%	5%	25%	50%	-

See notes 1, 3 and especially 18.