

Vermont Mental Health Performance Indicator Project

Agency of Human Services, Department of Mental Health
108 Cherry Street, Burlington, Vermont 05401

TO: Vermont Mental Health Performance Indicator Project
Advisory Group and Interested Parties

FROM: John Pandiani and Walter Ochs

DATE: September 4, 2009

RE: CMH and General Population Criminal Charges: FY2008

This week's PIP report provides rates of criminal charging in each of three categories (drug/alcohol, violent, and nonviolent) for recipients of mental health and substance abuse services at Vermont Department of Mental Health (DMH) community mental health centers (CMHC). These rates are compared to rates of criminal charging for members of the general population. This analysis was prepared in response to requests by Sandy Steingart (Medical Director at the HowardCenter) and Nick Emlen (MH Systems Coordinator at the Vermont Council of Developmental & Mental Health Services) following our August 21, 2009, PIP.¹

Findings are based on analysis of anonymous extracts from databases maintained by the Vermont DMH and the Vermont Center for Justice Research. The DMH data include basic demographic information for adults served by a CMHC mental health and substance abuse treatment program during FY2008. The justice research data include demographic information and type of offense for all adults charged with a crime in a Vermont District Court during FY2008. Because these data sets do not share unique person identifiers, Probabilistic Population Estimation (PPE) was used to determine the unduplicated number of individuals in each data set and the number of people shared by both data sets. As in the previous analysis, individuals charged with more than one type of crime are included in each relevant crime category, and motor vehicle offenses are excluded from this analysis.

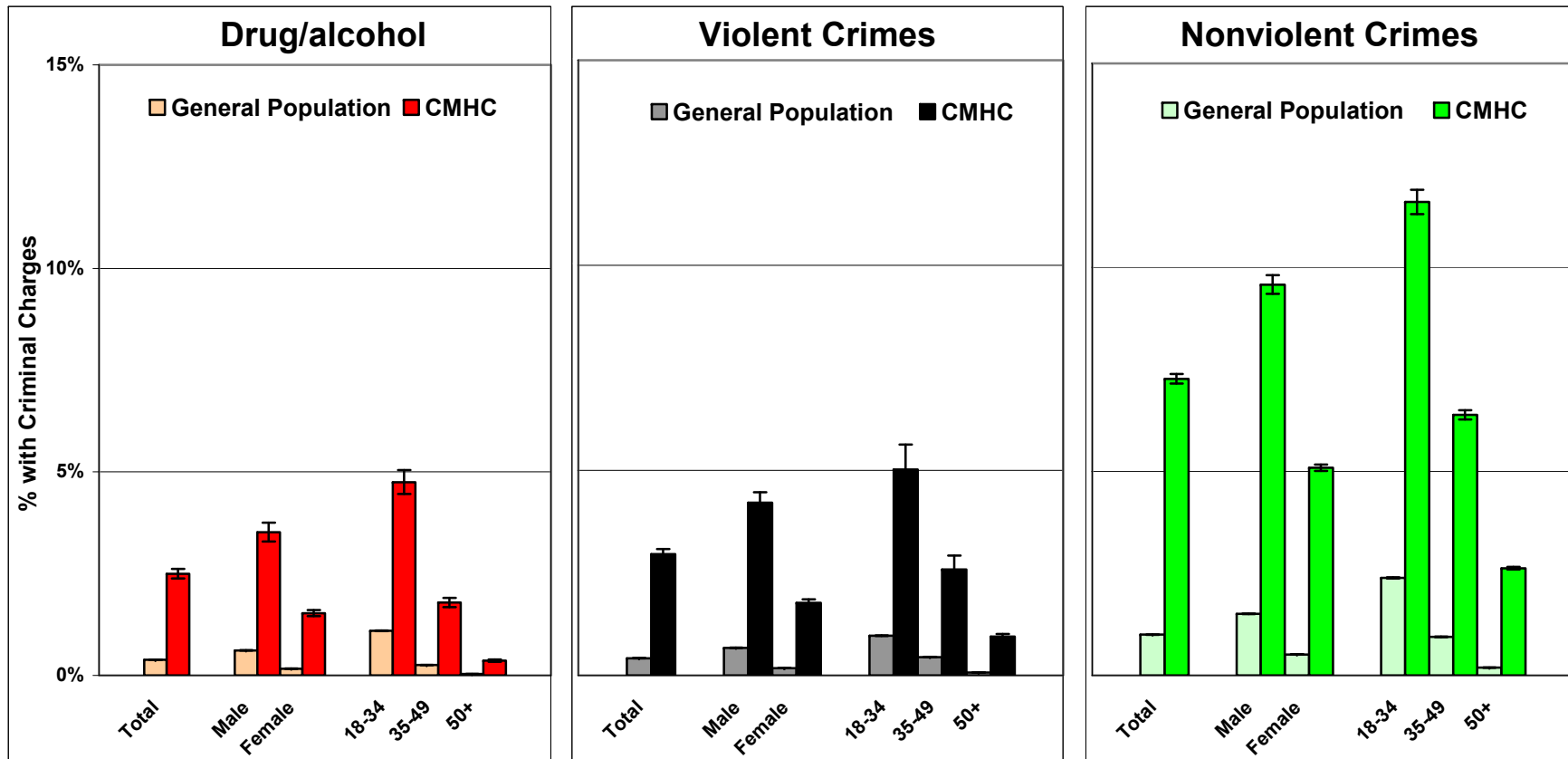
As you will see, DMH service recipients were more than 6 times as likely as other Vermont residents to be charged in each offense category. Rates of criminal charging for female service recipients were more than 9 times other women's rates. Rates of criminal charging for male service recipients were more than 5 times other men's rates. Rates of criminal charging for older service recipients (age 50+) were more than 10 times those of other older people. Rates of criminal charging for service recipients aged 35-49 were more than 6 times those of others in the same age group, and rates of criminal charging for service recipients aged 18-34 were more than 4 times the rates of criminal charging for other people in the same age group in the general population.

We look forward to your suggestions for further analysis of these data. As always your questions, comments, or interpretations of these findings can be directed to 802.863.7249 or pip@vdh.state.vt.us.

¹ Diagnosis and Criminal Charges for CMH Service Recipients: FY2008. http://mentalhealth.vermont.gov/sites/dmh/files/pip/DMH-PIP_Aug_21_2009.pdf

Criminal Charges in VT District Courts

VT General Population and CMHC Service Recipients by Type of Charge in FY2008



Analysis based anonymous extracts from databases maintained by the Vermont Department of Mental Health (DMH) and the Vermont Center for Justice Research. The DMH data include basic demographic and diagnostic information for adults served during FY2008 by Adult Mental Health Outpatient (AOP), Community Rehabilitation and Treatment (CRT), Emergency, and Substance Abuse treatment programs at the designated community mental health agencies. The justice research data include basic demographic information and type of offense (drug and alcohol, violent, and nonviolent) for all adults charged with a crime in a Vermont District Court during FY2008. Motor vehicle and municipal ordinance charges are not included in this analysis.

Because these data sets do not share unique person identifiers, Probabilistic Population Estimation (PPE) was used to determine the number of individuals represented in both data sets (with 95% confidence intervals).

Criminal Charges in VT District Courts VT General Population and CMHC Recipients by Type of Charge in FY2008

VT General Population

	Total	Gender		Age		
		Male	Female	18-34	35-49	50+
#	489,901	251,610	238,291	131,609	140,229	218,063
with Charges						
Drug/alcohol	% 0.38%±0.002%	0.61%±0.004%	0.17%±0.001%	1.10%±0.007%	0.26%±0.002%	0.04%±0.001%
Violent	% 0.42%±0.002%	0.67%±0.004%	0.18%±0.001%	0.97%±0.006%	0.45%±0.003%	0.07%±0.001%
Nonviolent	% 1.00%±0.004%	1.51%±0.008%	0.51%±0.003%	2.39%±0.014%	0.94%±0.006%	0.19%±0.001%

CMHC Service Recipients

	Total	Gender		Age		
		Male	Female	18-34	35-49	50+
#	14,876±36	7,223±26	7,653±24	5,637±24	4,907±21	4,332±16
with Charges						
Drug/alcohol	% 2.5%±0.1%	3.5%±0.2%	1.5%±0.1%	4.8%±0.3%	1.8%±0.1%	0.4%±0.1%
Violent	% 3.0%±0.1%	4.2%±0.3%	1.8%±0.1%	5.0%±0.6%	2.6%±0.3%	0.9%±0.1%
Nonviolent	% 7.3%±0.2%	9.6%±0.4%	5.1%±0.2%	11.6%±0.5%	6.4%±0.3%	2.6%±0.1%

Elevated Risk (CMHC/General Population)

	Total	Gender		Age		
		Male	Female	18-34	35-49	50+
Elevated Risk						
Drug/alcohol	6.5±0.3	5.7±0.4	9.2±0.5	4.3±0.3	7.0±0.4	10.1±0.9
Violent	7.1±0.3	6.3±0.4	10.1±0.5	4.6±0.3	6.7±0.4	13.8±0.9
Nonviolent	7.3±0.2	6.3±0.3	9.9±0.4	4.9±0.2	6.8±0.3	13.6±0.7

Analysis based anonymous extracts from databases maintained by the Vermont Department of Mental Health (DMH) and the Vermont Center for Justice Research. The DMH data include basic demographic and diagnostic information for adults served during FY2008 by Adult Mental Health Outpatient (AOP), Community Rehabilitation and Treatment (CRT), Emergency, and Substance Abuse treatment programs at the designated community mental health centers (CMHC). The justice research data include basic demographic information and type of offense (drug and alcohol, violent, and nonviolent) for all adults charged with a crime in a Vermont District Court during FY2008. Motor vehicle and municipal ordinance charges are not included in this analysis.

Because these data sets do not share unique person identifiers, Probabilistic Population Estimation (PPE) was used to determine the number of individuals represented in both data sets (with 95% confidence intervals).