

**Vermont Mental Health Performance Indicator Project**  
Agency of Human Services, Department of Health, Department of Mental Health  
108 Cherry Street, Burlington, Vermont 05401

**MEMORANDUM**

TO: Vermont Mental Health Performance Indicator Project  
Advisory Group and Interested Parties

FROM: John Pandiani and Barbara Carroll

DATE: August 22, 2008

RE: CMHC Caseload by Program for FY1985 – FY2008

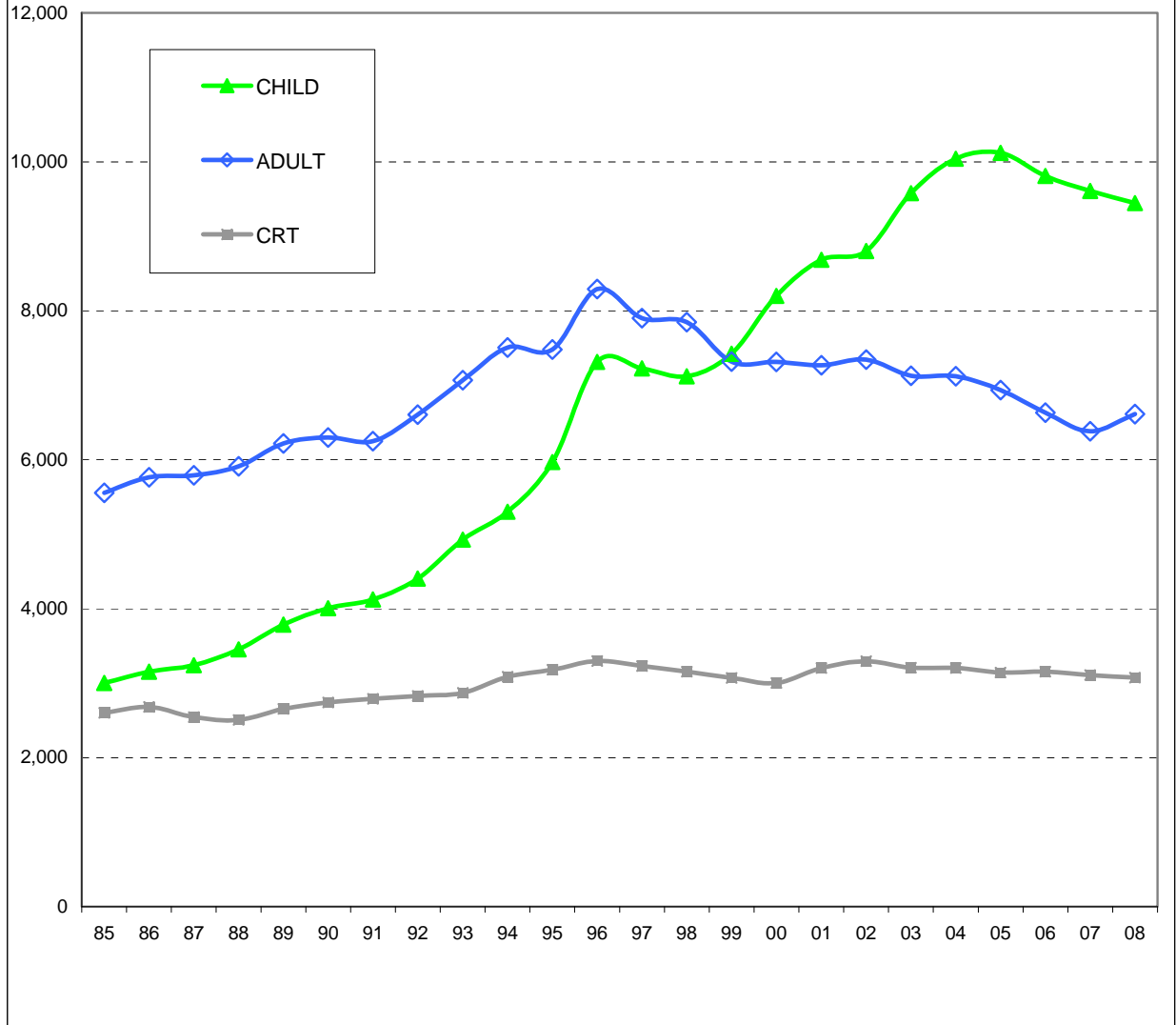
This week's Performance Indicator Project report provides a broad overview of Vermont's Community Mental Health Center (CMHC) caseload for fiscal years 1985 through 2008. Specifically, the report focuses on the number of people served by each of three treatment programs during each year of the period under examination. These treatment programs include Children's Services programs that provide services to children and families who are experiencing emotional or psychological distress, Adult Mental Health Outpatient (AOP) Programs that serve individuals aged 18 years of age or older who do not have prolonged serious disabilities but who are experiencing emotional, behavior, or adjustment problems severe enough to warrant professional attention, and Community Rehabilitation and Treatment (CRT) programs that serve adults with severe and persistent mental illness.

These findings are based on analysis of Monthly and Quarterly Service Report (MSR and QSR) data submitted to the Department of Mental Health (DMH) by designated community agencies. Client counts are based on primary program assignment.

As you will see, there have been substantial changes in CMHC program caseloads during the study period. Children's services programs experienced the most growth, increasing from 3,004 served in 1985 to more than 10,000 in 2004 and 2005 before decreasing to less than 9,500 in 2008. Adult Mental Health Outpatient program caseloads increased from 5,555 in 1985 to 8,290 in 1996, before decreasing to less than 7,000 served per year during 2005 through 2008. CRT program caseload were the least volatile during this 24 year period with annual caseloads varying by less than 800 between a low of 2,506 in 1988 to a high of 3,296 in 2002.

We look forward to your questions and comments about this report, and your suggestions for further analyses of these data. As always, we can be reached at [pip@vdh.state.vt.us](mailto:pip@vdh.state.vt.us) or 802-863-7249.

**VERMONT COMMUNITY MENTAL HEALTH CENTERS  
CLIENTS SERVED PER YEAR BY PROGRAM  
FY1985 - FY2008**



Numbers of people served are based on monthly/quarterly service reports submitted by Vermont's community mental health centers and includes people assigned to DMH mental health programs during FY1985 - FY2008. Individuals served by more than one agency are counted more than once.

Analysis by the Vermont Mental Health Performance Indicator Project.

**VERMONT COMMUNITY MENTAL HEALTH CENTERS  
CLIENTS SERVED PER YEAR BY PROGRAM  
FY1985 - FY2008**

	<u>CHILD</u>	<u>ADULT</u>	<u>CRT</u>
<b>2008</b>	9,446	6,614	3,076
<b>2007</b>	9,609	6,384	3,109
<b>2006</b>	9,812	6,631	3,154
<b>2005</b>	10,122	6,936	3,145
<b>2004</b>	10,040	7,120	3,205
<b>2003</b>	9,581	7,130	3,210
<b>2002</b>	8,802	7,345	3,296
<b>2001</b>	8,686	7,268	3,204
<b>2000</b>	8,200	7,316	3,002
<b>1999</b>	7,424	7,317	3,073
<b>1998</b>	7,122	7,847	3,155
<b>1997</b>	7,229	7,902	3,232
<b>1996</b>	7,314	8,290	3,301
<b>1995</b>	5,971	7,480	3,183
<b>1994</b>	5,304	7,508	3,088
<b>1993</b>	4,928	7,069	2,870
<b>1992</b>	4,405	6,607	2,829
<b>1991</b>	4,125	6,250	2,790
<b>1990</b>	4,006	6,298	2,744
<b>1989</b>	3,786	6,219	2,656
<b>1988</b>	3,455	5,913	2,506
<b>1987</b>	3,242	5,790	2,545
<b>1986</b>	3,156	5,766	2,680
<b>1985</b>	3,004	5,555	2,603

Numbers of people served are based on monthly/quarterly service reports submitted by Vermont's community mental health centers and includes people assigned to DMH mental health programs during FY1985 - FY2008. Individuals served by more than one agency are counted more than once.

Analysis by the Vermont Mental Health Performance Indicator Project.