

REGISTRATION AND HOTEL INFORMATION

Cost of Symposium

Early Registration on or before October 26, 2011 - \$85

Registration - \$99

Registration closes November 30, 2011.

Late registration will be accepted if space permits.

How to Register

On-line registration is encouraged. Please use the link below to register by credit card, check or PO:

<https://www.123signup.com/calendar?Org=NECFEMS>

Payment by credit card is required at the time of the registration.

If paying by check or PO make the check payable to NECEMS and send your check or PO, with your name, address, phone number and email address to:

Donna Jacobs, New England Council for EMS
C/O Vermont EMS
P.O. Box 70
Burlington, VT 05402

Cancellation Policy

Cancellations received in writing postmarked by November 23 will be refunded, minus a \$25 administrative fee.

Overnight Accommodations

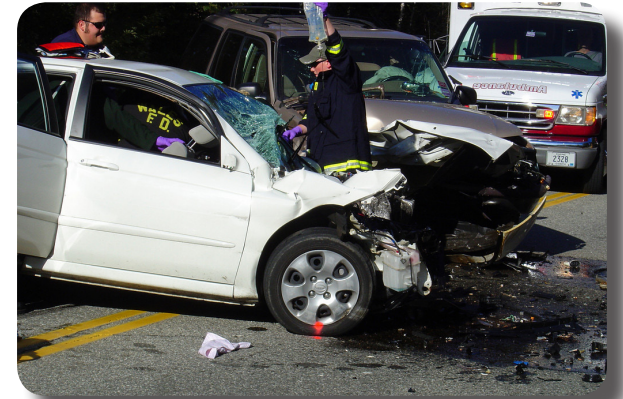
The Best Western Royal Plaza Hotel and Trade Center
181 Boston Post Road West
Marlborough, MA
Conference Rate: \$94 +tax per night
Deadline for conference rate is November 16, 2011
For room reservations, call (508) 460-0700 or
<http://www.rplazahotels.com>

*Any questions or for information contact the
NECEMS Conference Line at (207)795-2883 or
email necemsconf@gmail.com*

New England Council for EMS
C/O Vermont EMS
P.O. Box 70
Burlington, VT 05402

NEW ENGLAND COUNCIL FOR EMERGENCY MEDICAL SERVICES

EMS CONTINUING EDUCATION FALL SYMPOSIUM IN CONTEMPORARY EMS TOPICS



DECEMBER 2, 2011

8 A.M. – 5 P.M.

**THE BEST WESTERN ROYAL PLAZA
HOTEL AND TRADE CENTER
MARLBOROUGH, MA**

Photo by Cathy Case Photography

INTRODUCTION

This symposium will provide continuing education for EMS Providers on a wide variety of contemporary EMS topics. Presenters have been selected for their expertise in emergency medical topics as well as their reputation for lively and interactive presentations. Some programs have a restricted enrollment, so be sure to register early.

AGENDA — PRESENTATIONS

8 a.m. — **REGISTRATION**

8:30 a.m. to 9:30 a.m.

“BLAST INJURIES”

Jonathan Burstein, M.D., Medical Director, Massachusetts EMS, Dept. of Public Health

Blast injury is unfortunately becoming a more common problem faced by EMS responders. Scene safety, triage, and treatment can be complicated, messy, and difficult. With pictures, this talk will cover those issues, incorporating up-to-date research findings.

9:30 a.m. to 9:45 a.m. — **BREAK**

9:45 a.m. to 10:45 a.m.

“MEDICINE ON DENALI”

Paul Marcolini, WEMT-Paramedic, AS, Climbing Ranger Denali National Park, Senior Faculty Wilderness Medical Associates

On Denali, from May through July, the National Park Service maintains a medical station at 14,000 feet. This program will discuss the diagnosis and treatment of medical conditions that occur on the mountain in this remote setting. Paul will discuss his experience and present cases on pulmonary edema, cerebral edema, and frostbite.

10:45 a.m. to 11 a.m. — **BREAK**

11 a.m. to Noon

“CLUB DRUGS”

Andrew Old, M.D., Assistant Medical Director, Saint Anne’s Hospital, Fall River, MA

What’s going on with that individual who isn’t acting right at the bar? Too much alcohol or something else? Learn about the drugs that are making the scene.

Noon to 1 p.m. — **LUNCH**

1 p.m. to 2 p.m.

“INJURY PREVENTION AND EMS: THE HUMPTY DUMPTY FACTOR”

Deb Clapp, EMT-P, Massachusetts EMS-C

Injuries are the single leading cause of death for people ages 1-44, and account for one third of all Emergency Department visits each year. What role does EMS play in injury prevention? Is our job merely to “pick up the pieces,” or do we have a more vital role?

2 p.m. to 2:15 p.m. — **BREAK**

2:15 p.m. to 3:15 p.m.

“LITTLE BODIES...LITTLE AIRWAYS”

Jim Parker, M.D., Connecticut Children’s Medical Center Emergency Department

Respiratory illnesses and their management can be difficult enough without space issues! There will be a focus on commonly encountered pediatric respiratory illnesses and their management, as well as the assessment and management of the pediatric airway.

3:15 p.m. to 3:30 p.m. — **BREAK**

3:30 p.m. to 5 p.m.

“HANDS ONLY CPR”

Andrew Geller, M.D., Director of Emergency Medicine Norwood Hospital, Norwood, Mass

Dr. Geller will present the most recent research on the use of compression only CPR in the first few minutes of

a witnessed cardiac arrest and he will discuss his current pilot project on this topic.

AGENDA — BREAKOUT SESSIONS

9:45 a.m. to 11:45 a.m. (limited to 24 attendees)

“DIFFICULT AIRWAY”

Mark Restuccia, M.D., Clinical Associate Professor of Emergency Medicine, UMass

This session will discuss difficult airways and the tools available to deal with them, followed by a practical session allowing participants to try their skills with those same tools. The session is limited to 24 Paramedic-level participants, with a 1/6 ratio of students to equipment & instructors.

1 p.m. to 3 p.m. (limited to 36 attendees)

“TACTICAL EMS 101”

Eric Stratton, EMT-P, Massachusetts

This presentation will provide an overview of tactical emergency medical support, including what it is, its history, differences between TEMS and civilian/traditional EMS. You will learn some of the tenets of care the TEMS provider would likely adopt.

CONTINUING EDUCATION CREDITS

Credits pending from all New England states.

EMS Credit will be awarded. For information on specific continuing education credits see our facebook page at New England Council for Emergency Medical Services