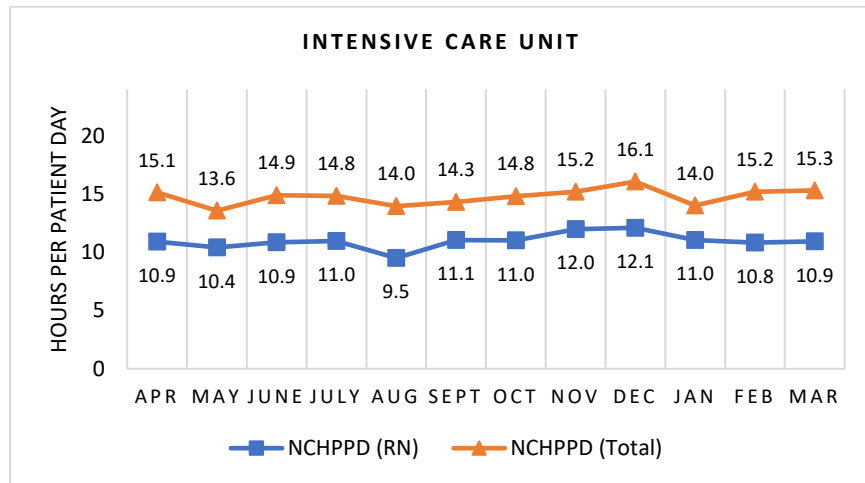


## RUTLAND REGIONAL MEDICAL CENTER Intensive Care Unit

The Intensive Care Unit has 13 licensed beds. Types of services provided in this setting include care of people with, or at risk of developing life-threatening problems.

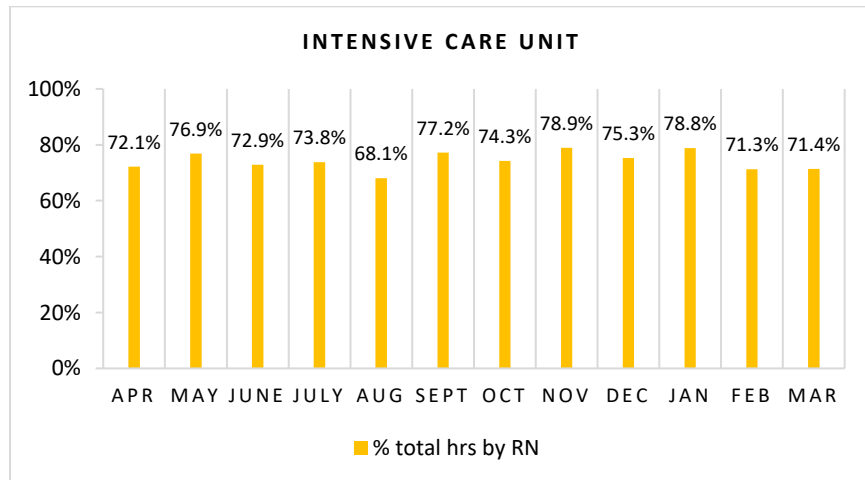
### Nursing Care Hours per Patient Day (NCHPPD): April 2018 - March 2019

This graph shows the average number of direct nursing care hours provided per patient during a 24-hour period. Results are shown for care provided by registered nurses (RNs) and by all nursing staff (total) by month.



### Percent of Total Nursing Care Hours Provided by RNs: April 2018 - March 2019

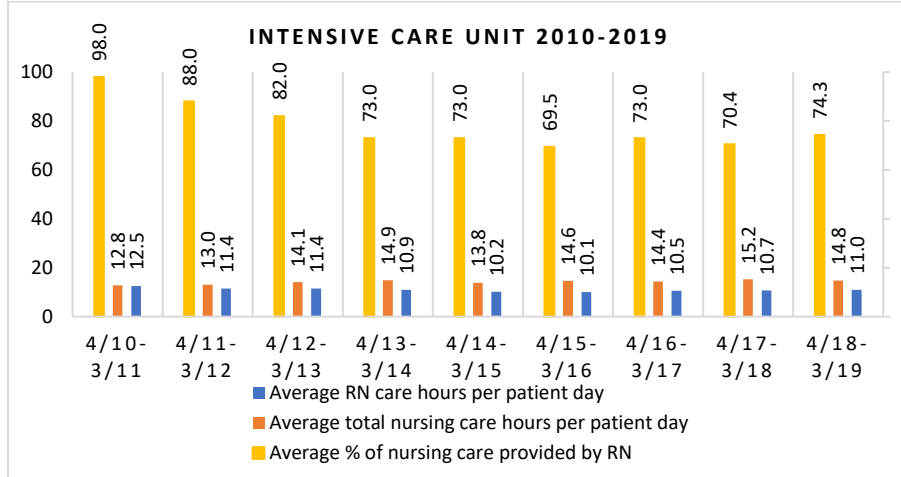
This graph shows the percentage of total nursing hours provided by RNs each month. Yearly average for this period is 74.3%.



## 2019 Nurse Staffing Data

### Yearly Average of RN and Total Nursing Care Hours per Patient Day, Percent of Total Nursing Care Hours Provided by RNs, 2010 - 2019

The graph below shows trend over time on the average RN and total nursing care hours per patient days, and average percentage of nursing care that was provided by RN.

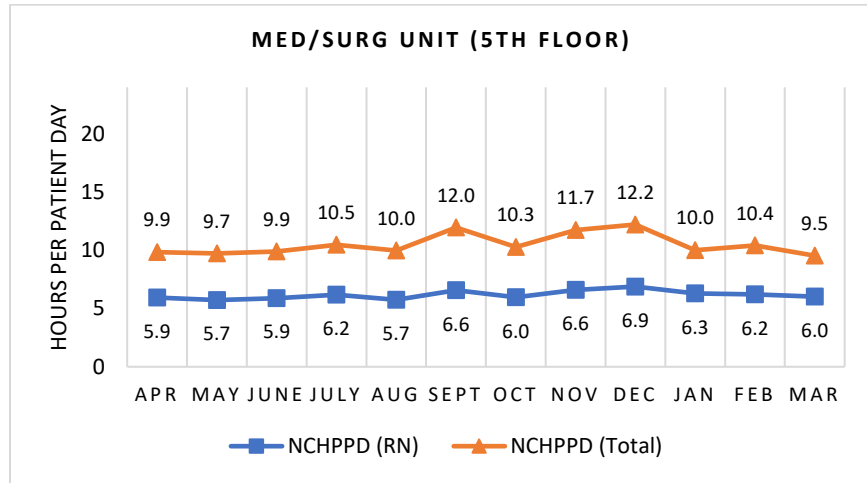


**RUTLAND REGIONAL MEDICAL CENTER**  
**Medical/Surgical Unit (5<sup>TH</sup> FLOOR)**

The Medical/Surgical Unit, also known as the Medical/Oncology Unit, has 30 licensed beds and cares for adult patients. Types of services provided in this setting include care of people with general medical and surgical problems, and care of people with cancer.

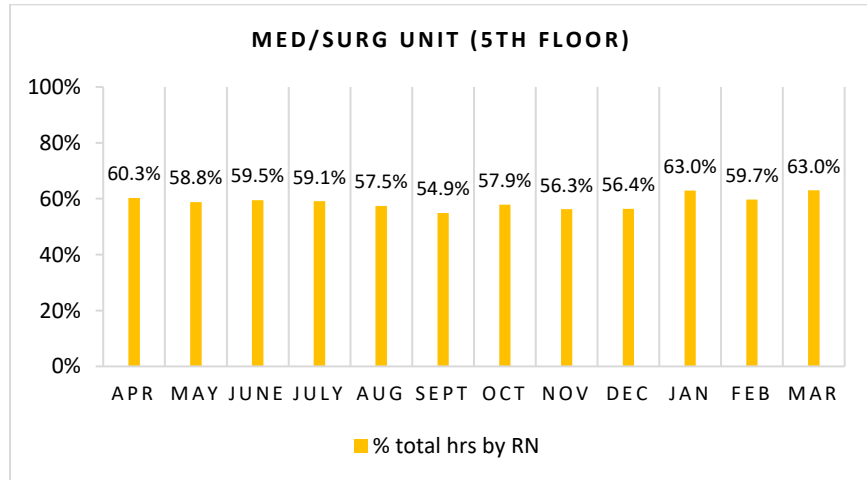
**Nursing Care Hours per Patient Day (NCHPPD): April 2018 - March 2019**

This graph shows the average number of direct nursing care hours provided per patient during a 24-hour period. Results are shown for care provided by registered nurses (RNs) and by all nursing staff (total) by month.



**Percent of Total Nursing Care Hours Provided by RNs: April 2018 - March 2019**

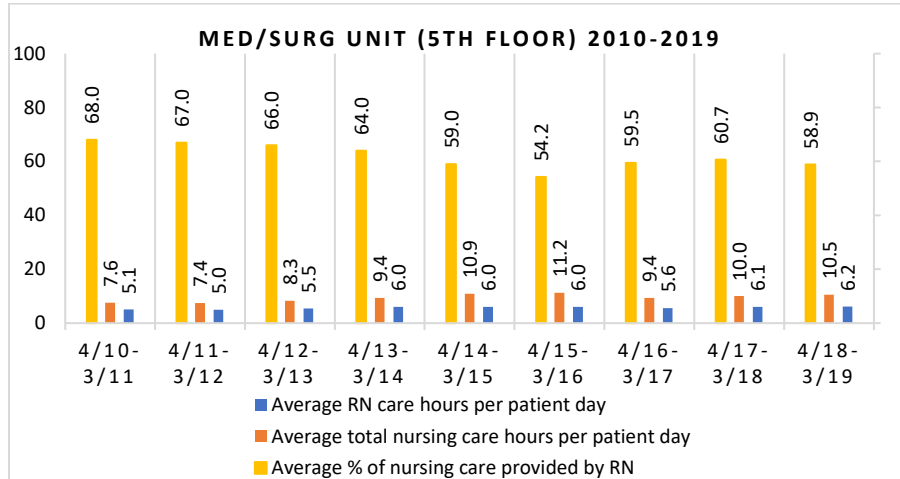
This graph shows the percentage of total nursing hours provided by RNs each month. Yearly average for this period is 58.9%.



## 2019 Nurse Staffing Data

### Yearly Average of RN and Total Nursing Care Hours per Patient Day, Percent of Total Nursing Care Hours Provided by RNs, 2010 - 2019

The graph below shows trend over time on the average RN and total nursing care hours per patient days, and average percentage of nursing care that was provided by RN.

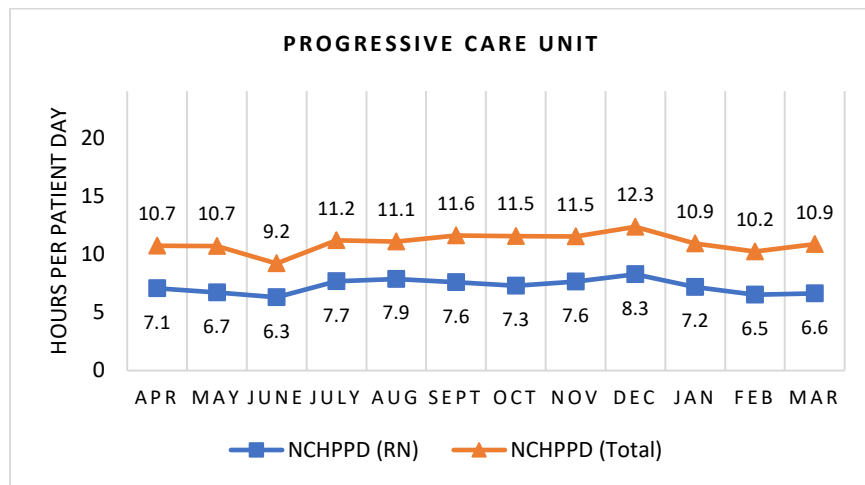


## RUTLAND REGIONAL MEDICAL CENTER Progressive Care Unit

The Progressive Care Unit, an ICU step-down unit, has 16 licensed beds. Types of services provided in this setting include care of adult patients needing heart monitoring and/or is at risk for developing life-threatening problems.

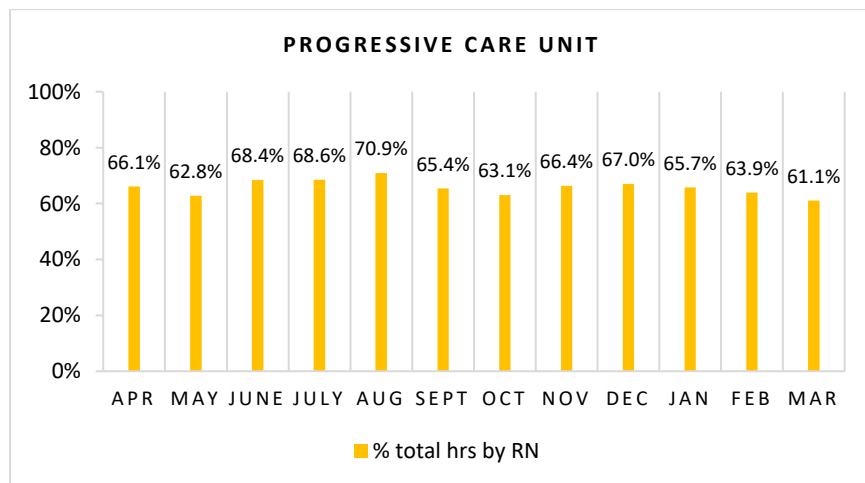
### Nursing Care Hours per Patient Day (NCHPPD): April 2018 - March 2019

This graph shows the average number of direct nursing care hours provided per patient during a 24-hour period. Results are shown for care provided by registered nurses (RNs) and by all nursing staff (total) by month.



### Percent of Total Nursing Care Hours Provided by RNs: April 2018 - March 2019

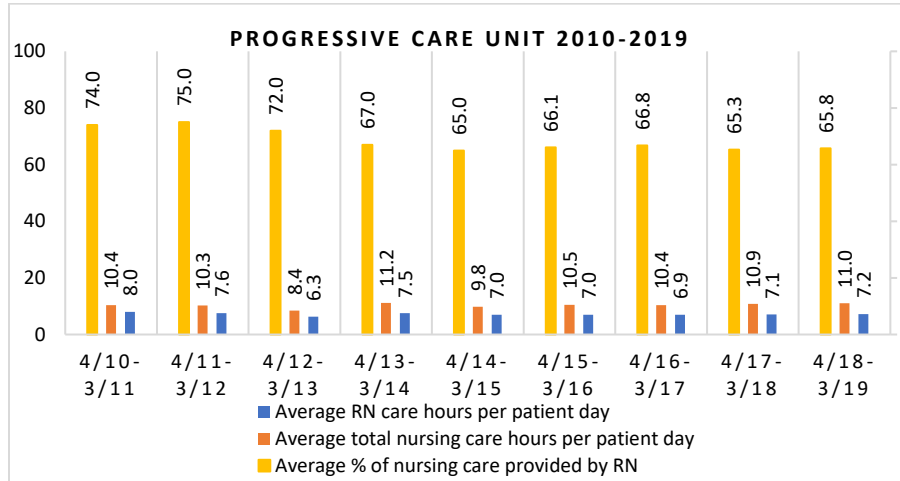
This graph shows the percentage of total nursing hours provided by RNs each month. Yearly average for this period is 65.8%.



## 2019 Nurse Staffing Data

### Yearly Average of RN and Total Nursing Care Hours per Patient Day, Percent of Total Nursing Care Hours Provided by RNs, 2010 - 2019

The graph below shows trend over time on the average RN and total nursing care hours per patient days, and average percentage of nursing care that was provided by RN.

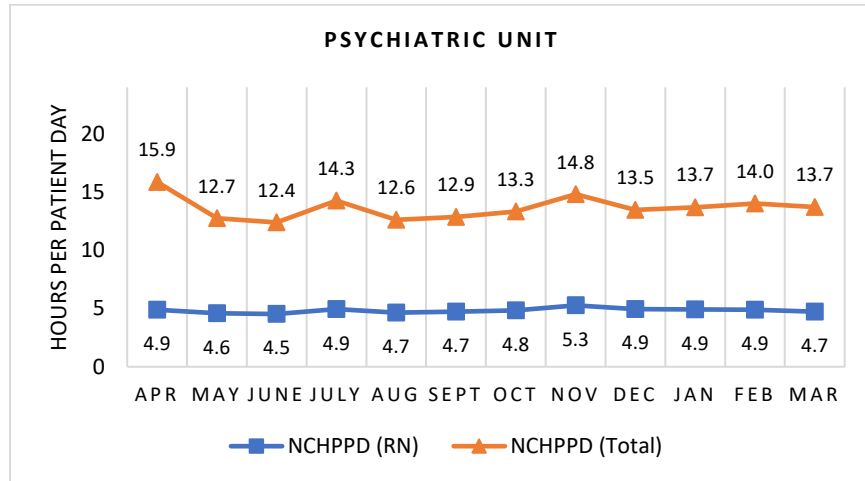


**RUTLAND REGIONAL MEDICAL CENTER**  
**Psychiatric Inpatient Services and Intensive Care Unit**

The Psychiatric Inpatient Services and Intensive Care Unit has 23 licensed beds, and cares for adult patients. Types of services provided in this setting include short-term, secure inpatient care for individuals with a mental health diagnosis, substance abuse disorder, or both.

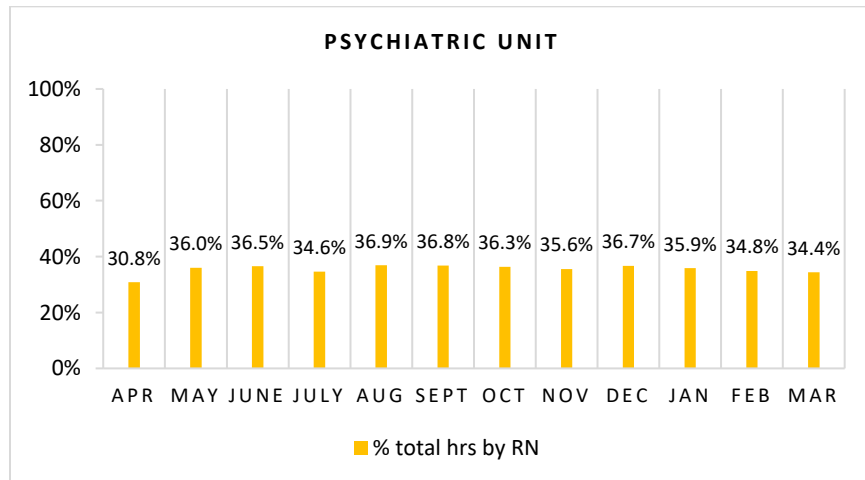
**Nursing Care Hours per Patient Day (NCHPPD): April 2018 - March 2019**

This graph shows the average number of direct nursing care hours provided per patient during a 24-hour period. Results are shown for care provided by registered nurses (RNs) and by all nursing staff (total) by month.



**Percent of Total Nursing Care Hours Provided by RNs: April 2018 - March 2019**

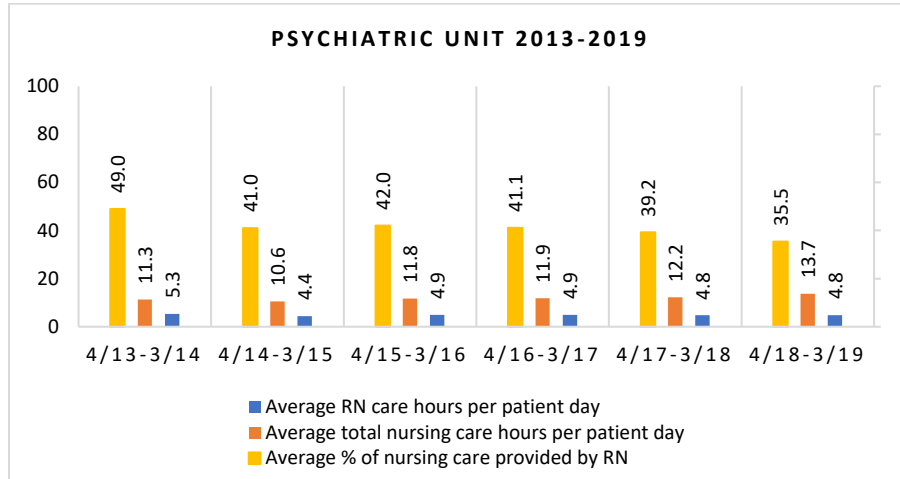
This graph shows the percentage of total nursing hours provided by RNs each month. Yearly average for this period is 35.5%.



## 2019 Nurse Staffing Data

### Yearly Average of RN and Total Nursing Care Hours per Patient Day, Percent of Total Nursing Care Hours Provided by RNs, 2013 - 2019

The graph below shows trend over time on the average RN and total nursing care hours per patient days, and average percentage of nursing care that was provided by RN.



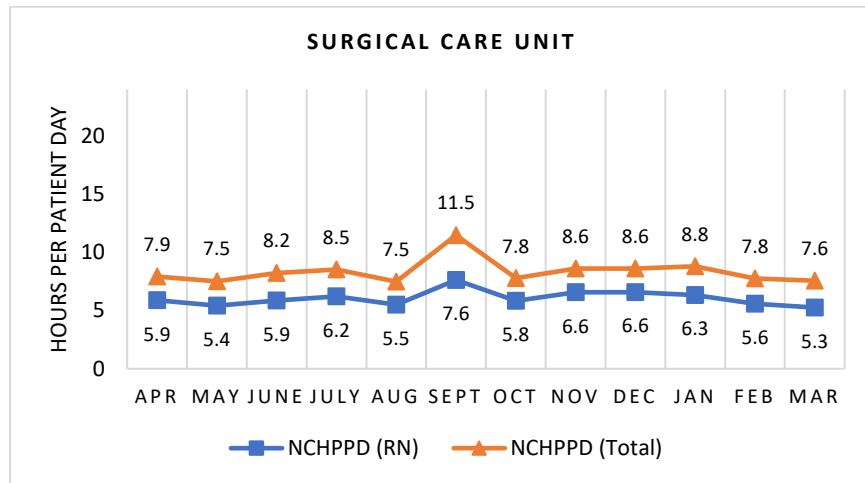


## RUTLAND REGIONAL MEDICAL CENTER Surgical Care Unit

The Surgical Care Unit has 20 licensed beds and cares mainly for adult patients. Types of services provided in this setting include care of people with general surgical problems, and orthopedic care.

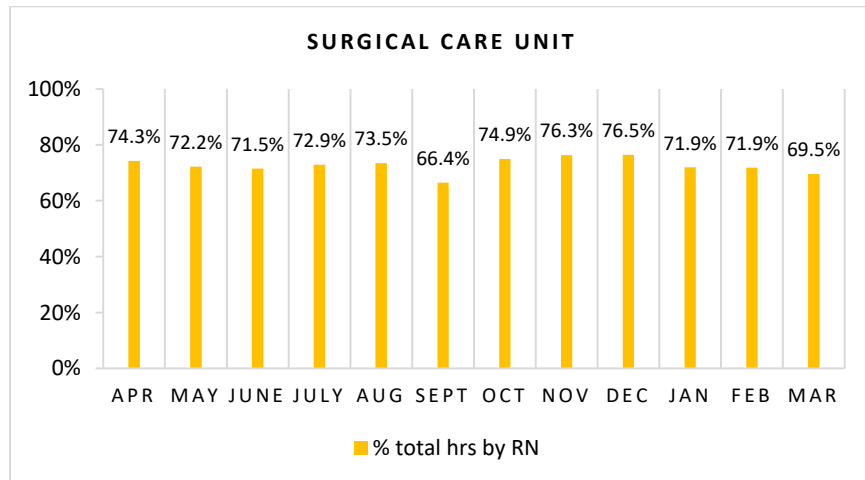
### Nursing Care Hours per Patient Day (NCHPPD): April 2018 - March 2019

This graph shows the average number of direct nursing care hours provided per patient during a 24-hour period. Results are shown for care provided by registered nurses (RNs) and by all nursing staff (total) by month.



### Percent of Total Nursing Care Hours Provided by RNs: April 2018 - March 2019

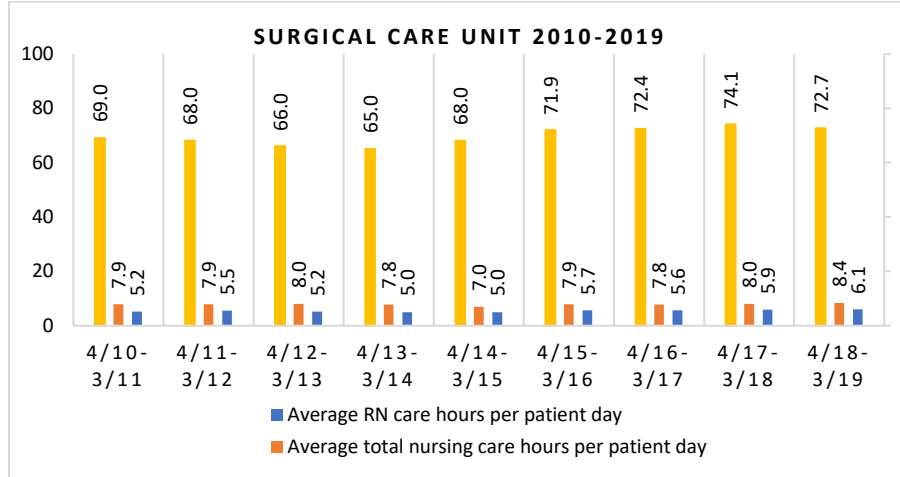
This graph shows the percentage of total nursing hours provided by RNs each month. Yearly average for this period is 72.7%.



## 2019 Nurse Staffing Data

### Yearly Average of RN and Total Nursing Care Hours per Patient Day, Percent of Total Nursing Care Hours Provided by RNs, 2010 - 2019

The graph below shows trend over time on the average RN and total nursing care hours per patient days, and average percentage of nursing care that was provided by RN.

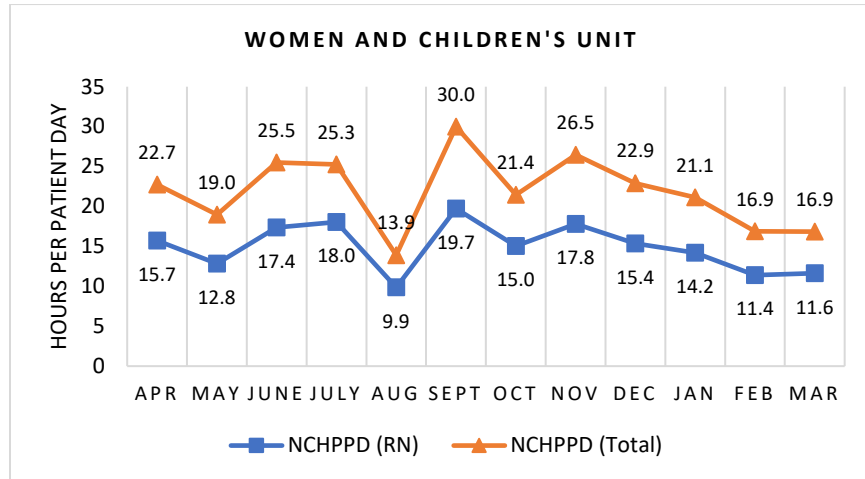


**RUTLAND REGIONAL MEDICAL CENTER**  
**Women's and Children's Unit**

The Women and Children's Unit has 8 licensed beds and provides postpartum care for mother and baby.

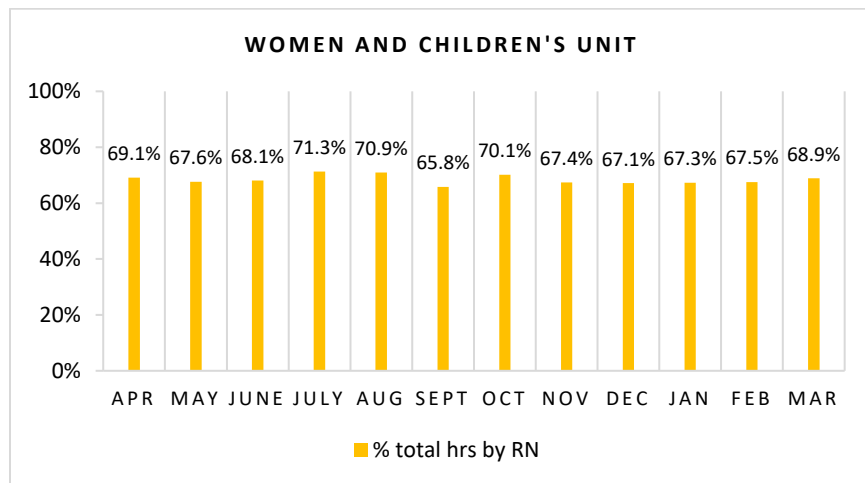
**Nursing Care Hours per Patient Day (NCHPPD): April 2018 - March 2019**

This graph shows the average number of direct nursing care hours provided per patient during a 24-hour period. Results are shown for care provided by registered nurses (RNs) and by all nursing staff (total) by month.



**Percent of Total Nursing Care Hours Provided by RNs: April 2018 - March 2019**

This graph shows the percentage of total nursing hours provided by RNs each month. Yearly average for this period is 68.4%.



## 2019 Nurse Staffing Data

### Yearly Average of RN and Total Nursing Care Hours per Patient Day, Percent of Total Nursing Care Hours Provided by RNs, 2017 - 2019

The graph below shows trend over time on the average RN and total nursing care hours per patient days, and average percentage of nursing care that was provided by RN.

