

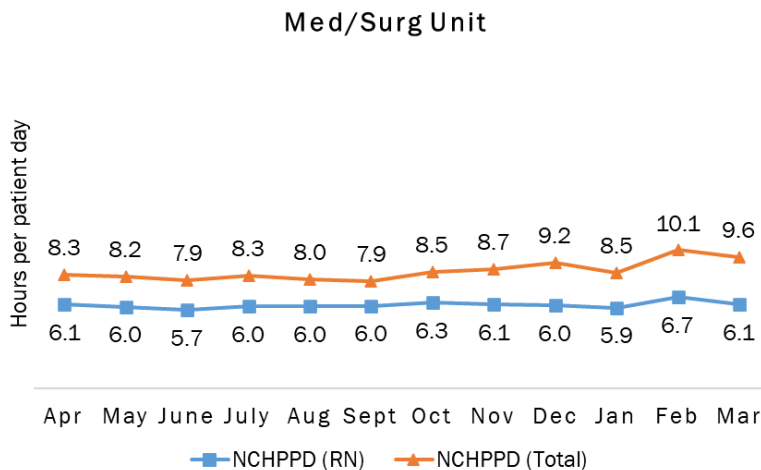
## 2023 Nurse Staffing Data

### Mt. Ascutney Hospital Medical/Surgical Unit

The Medical/Surgical Unit has 25 licensed beds and cares primarily for adult and geriatric patients. Types of services provided in this setting include care of people with general medical and surgical problems, heart monitoring, end-of-life care, and rehabilitative care.

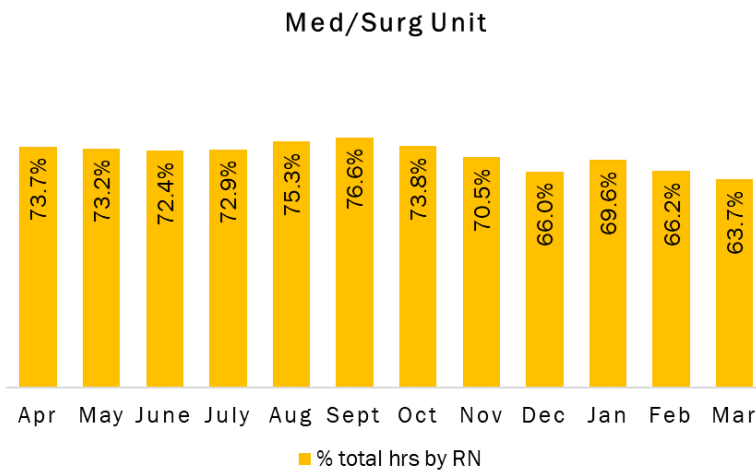
#### Nursing Care Hours per Patient Day (NCHPPD): April 2022 - March 2023

This graph shows the average number of direct nursing care hours provided per patient during a 24-hour period. Results are shown for care provided by registered nurses (RNs) and by all nursing staff (total) by month.



#### Percent of Total Nursing Care Hours Provided by RNs: April 2022 - March 2023

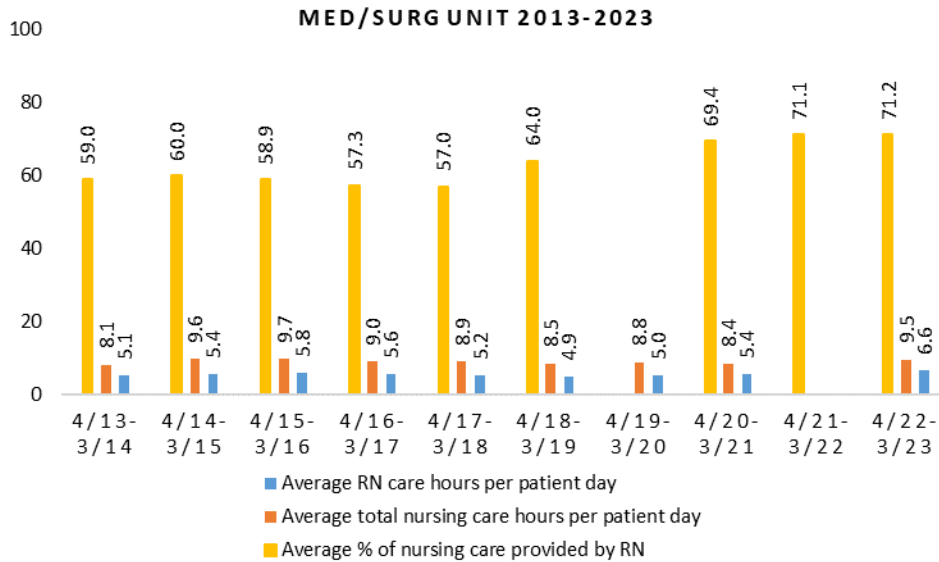
This graph shows the percentage of total nursing hours provided by RNs each month. Yearly average for this period is 71.16%.



## 2023 Nurse Staffing Data

### Yearly Average of RN and Total Nursing Care Hours per Patient Day, Percent of Total Nursing Care Hours Provided by RNs, 2013 - 2023

The graph below shows trend over time on the average RN and total nursing care hours per patient days, and average percentage of nursing care that was provided by RN.



**\*April 2019-March 2020 data is not available due to the pandemic.**