

The Vermont Department of Health

2011 DENTIST SURVEY SUMMARY REPORT

Guidance • Support • Prevention • Protection

October, 2012



OUTLINE

- **Overview and Key Findings**
- **Survey Question Analysis**
- **Comparison with Previous Surveys**

SURVEY OVERVIEW

SURVEY DESCRIPTION

Completed by most dentists online with the license renewal in late summer 2011

Followed-up via mail and phone calls

The final response rate was 99.7%

- 1 dentist refused to provide practice information

SURVEY DESCRIPTION (continued)

Questions asked of dentists included:

- Gender and age
- Specialty
- Location and hours of practice
- Whether they were accepting new patients
- Whether they work with hygienists
- Years worked in Vermont
- Efforts to hire an associate

KEY FINDINGS

- There were 368 dentists working in Vermont
- 81% were primary care dentists, including:
 - *288 general dentists*
 - *9 pediatric dentists*
- 19% work 40 or more hours per week, while 53% work between 30 and 40 hours per week. *(This only counts direct patient care and does not include practice management.)*

KEY FINDINGS (continued)

- The 368 dentists correspond to 281.2 Full Time Equivalents (FTEs) (1 FTE = 40 hours/week)
- 63% of the dentists are 50 or older, 49% are 55 or older, and 34% are 60 or older
- 5 of the 9 pediatric dentists are 55 or older
- 11 of the 25 orthodontists are 55 or older
- 5 of the 10 endodontists are 55 or older

KEY FINDINGS (continued)

As compared with 2009:

- There are 2 more dentists in total
- There are the same number of dentists under age 35
- There are 15 fewer dentists age 35-59
- There are 16 more dentists age 60 or older

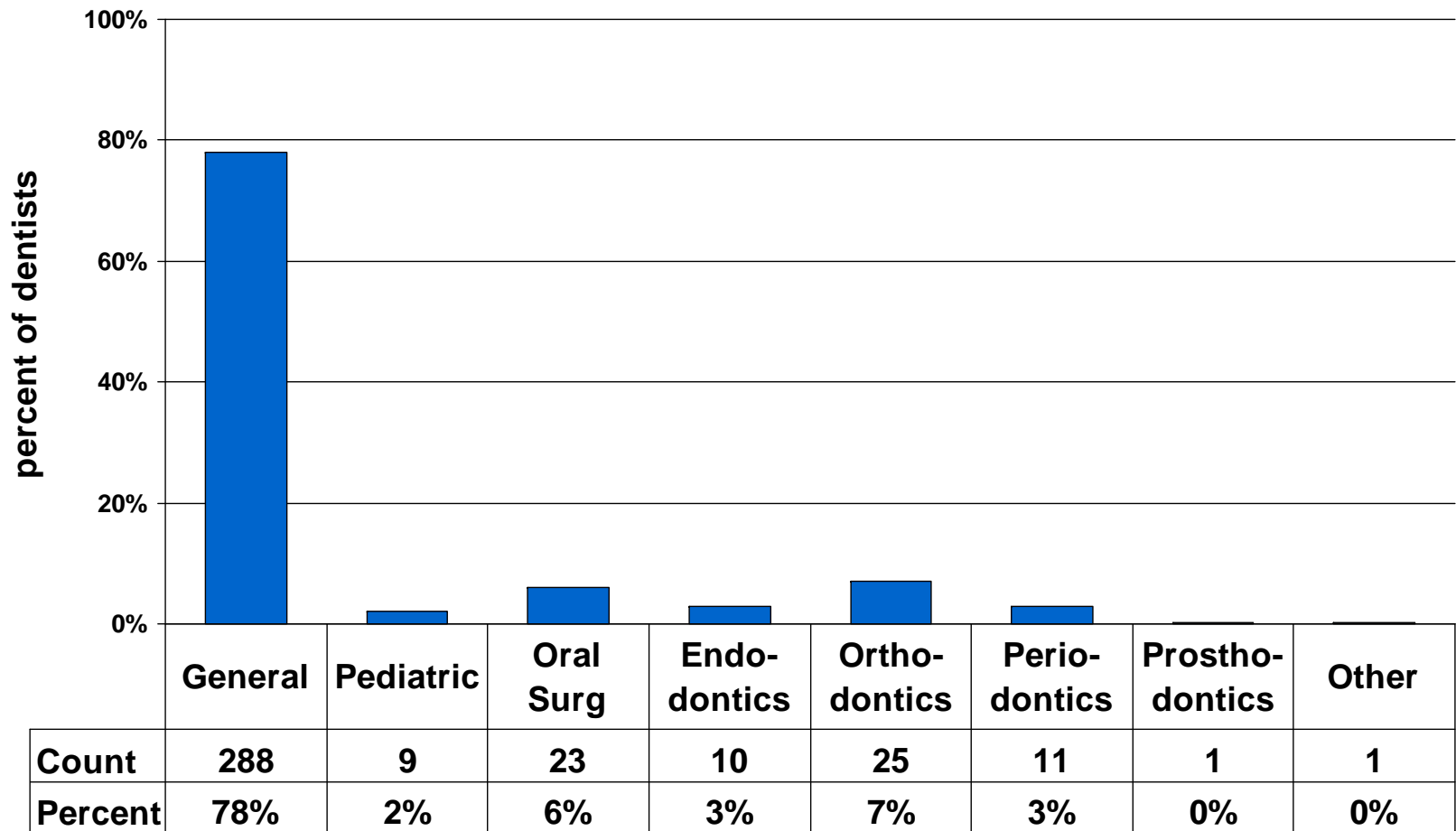
KEY FINDINGS (continued)

As compared with 2009:

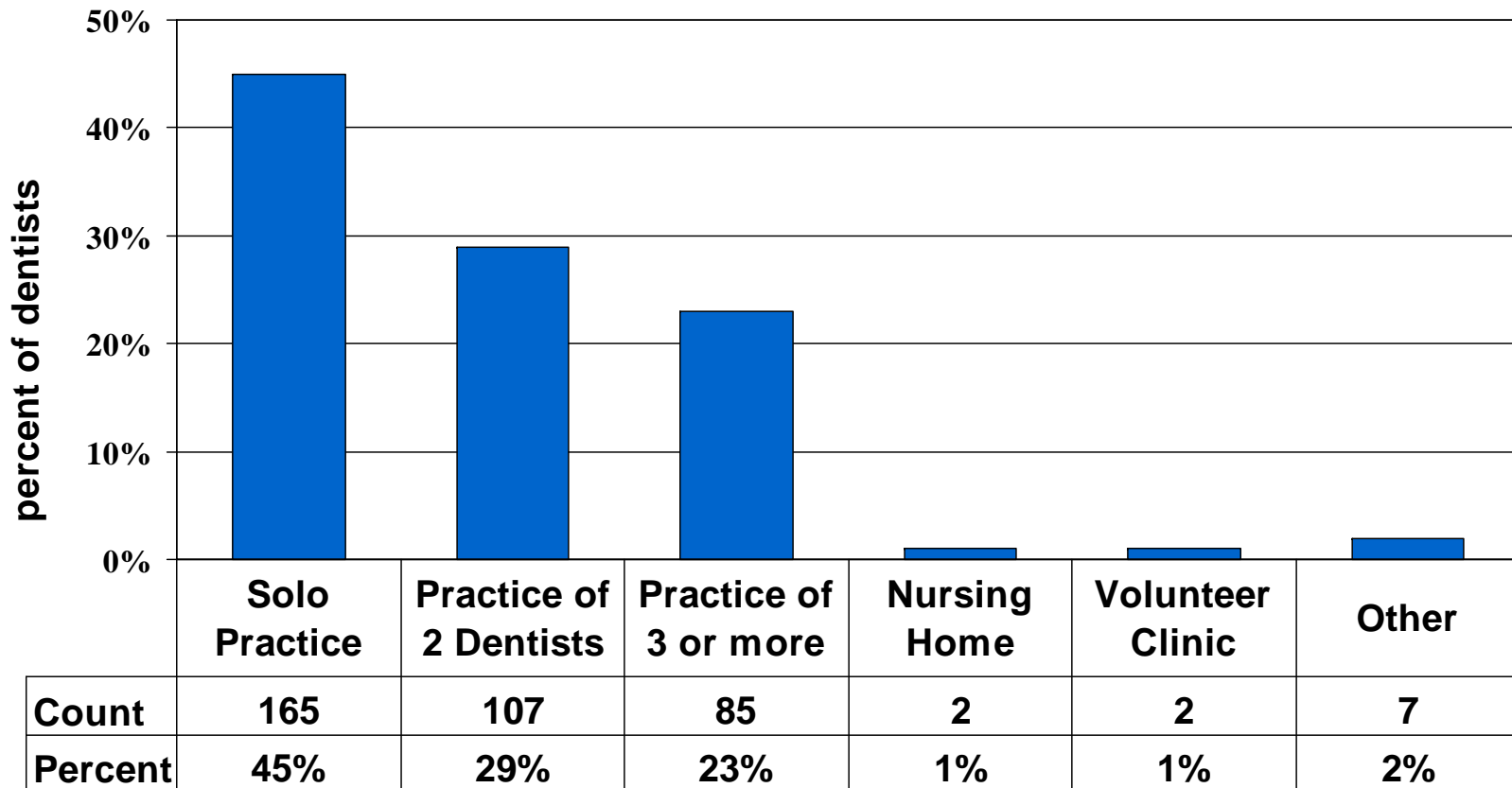
- More dentists are working 40+ hours per week
- There are 11.3 more FTEs in primary care, and 1.8 fewer FTEs in specialty care
- Percentage accepting new Medicaid patients has increased
- Average time to appointment has decreased for primary care but increased for specialty care

SURVEY QUESTION ANALYSIS

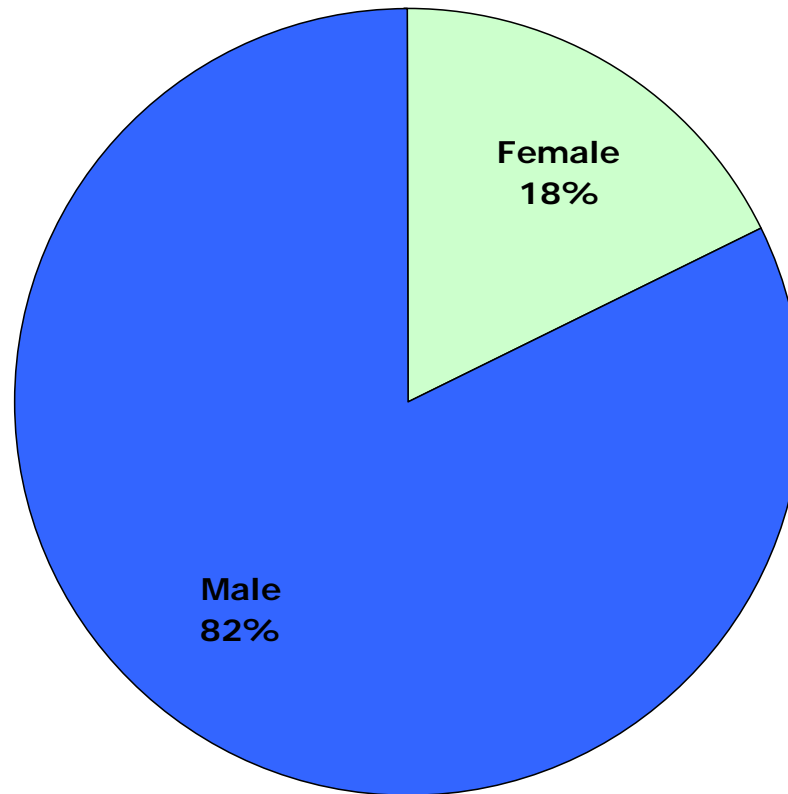
SPECIALTY



PRACTICE SETTING

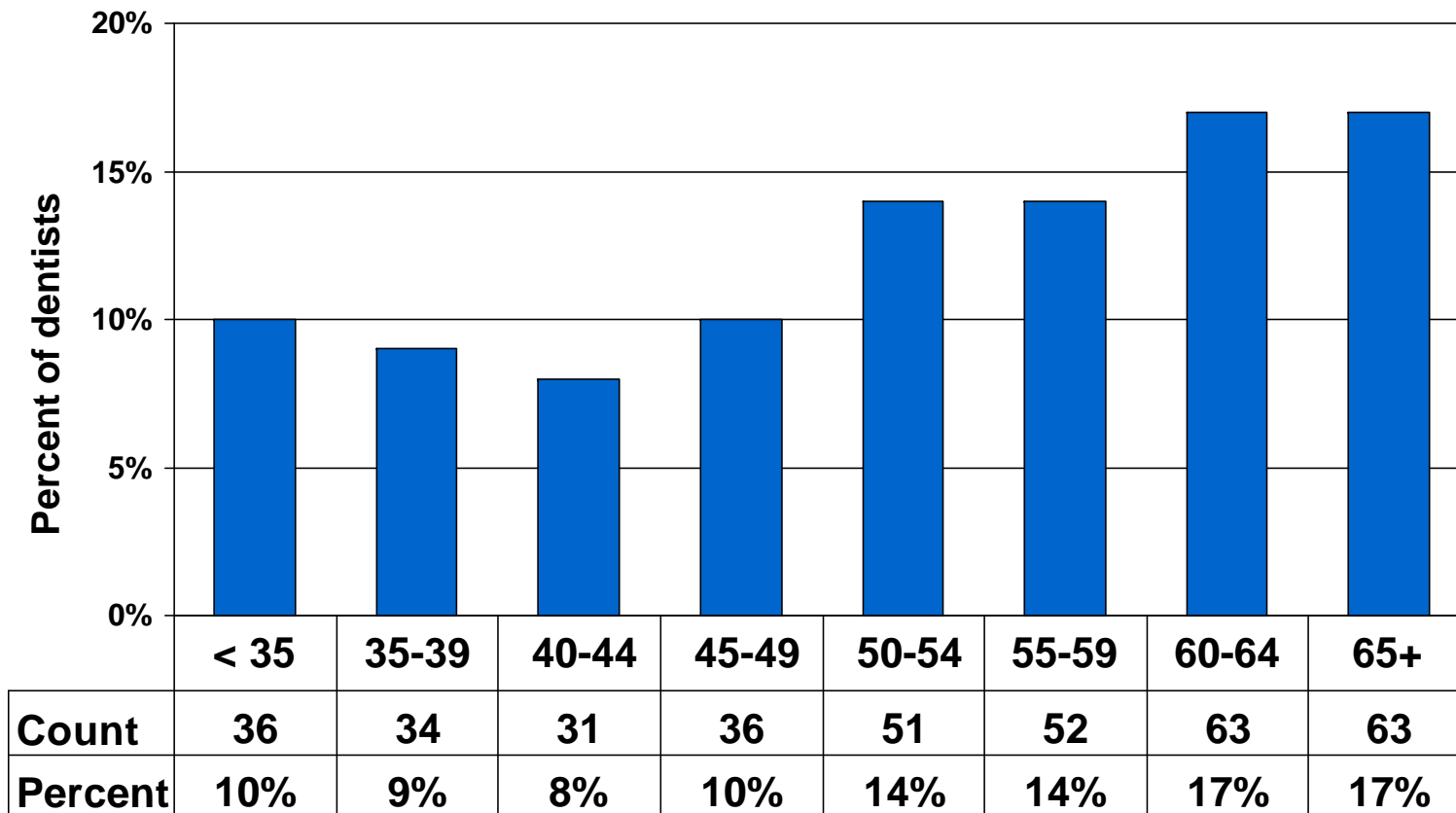


GENDER



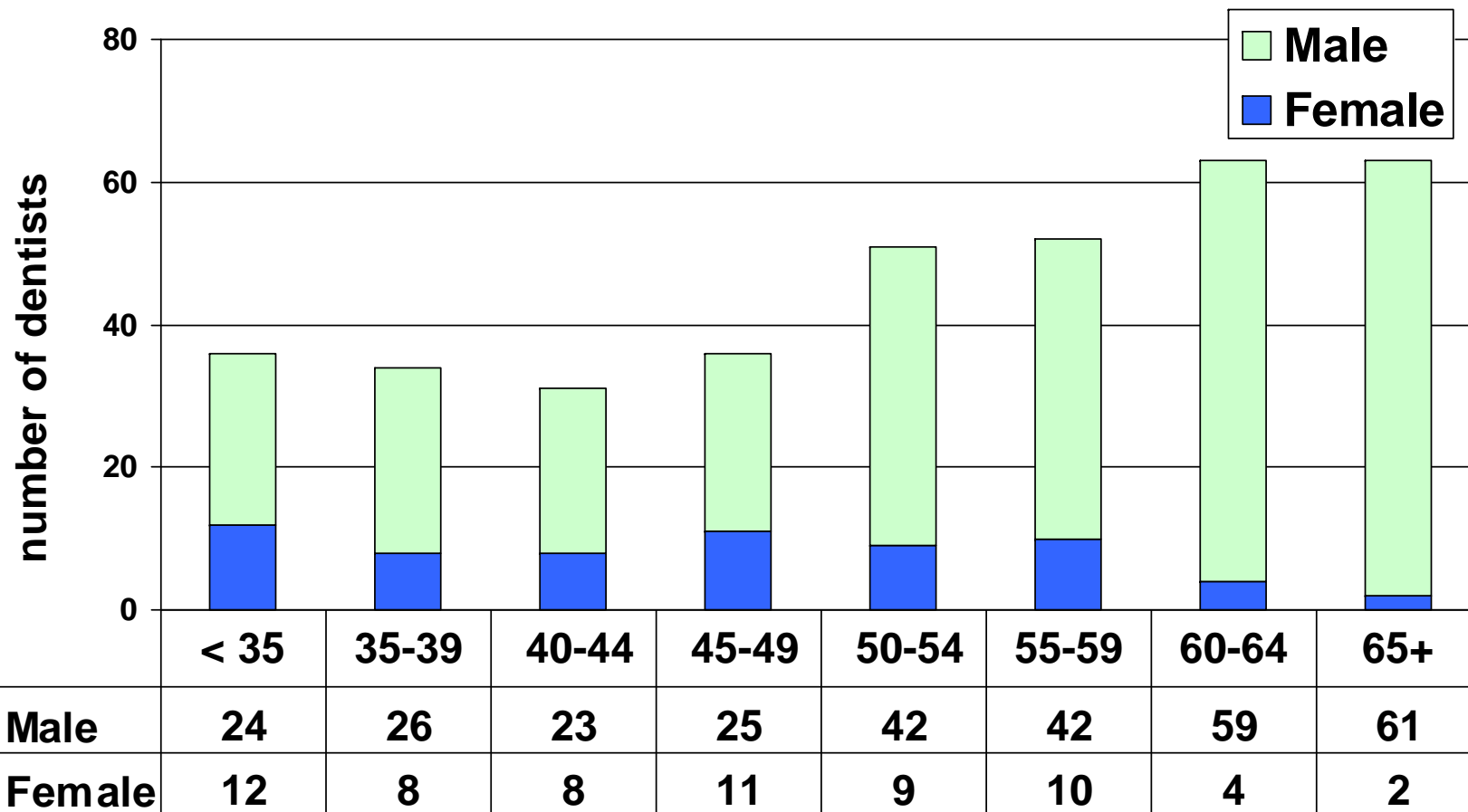
303 of the dentists are male, 65 are female

AGE DISTRIBUTION



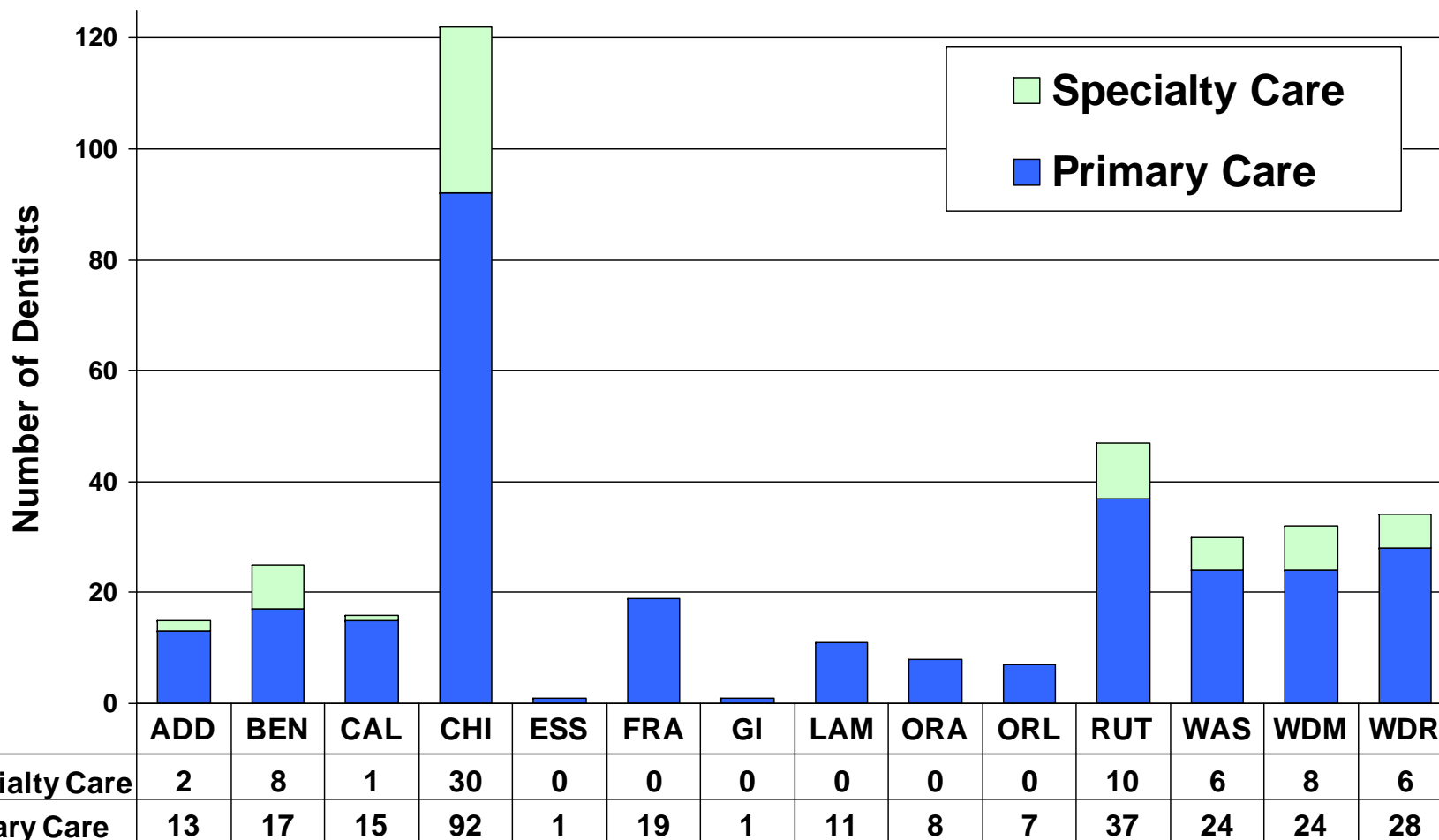
34% of all dentists are age 60 or older

AGE DISTRIBUTION BY GENDER

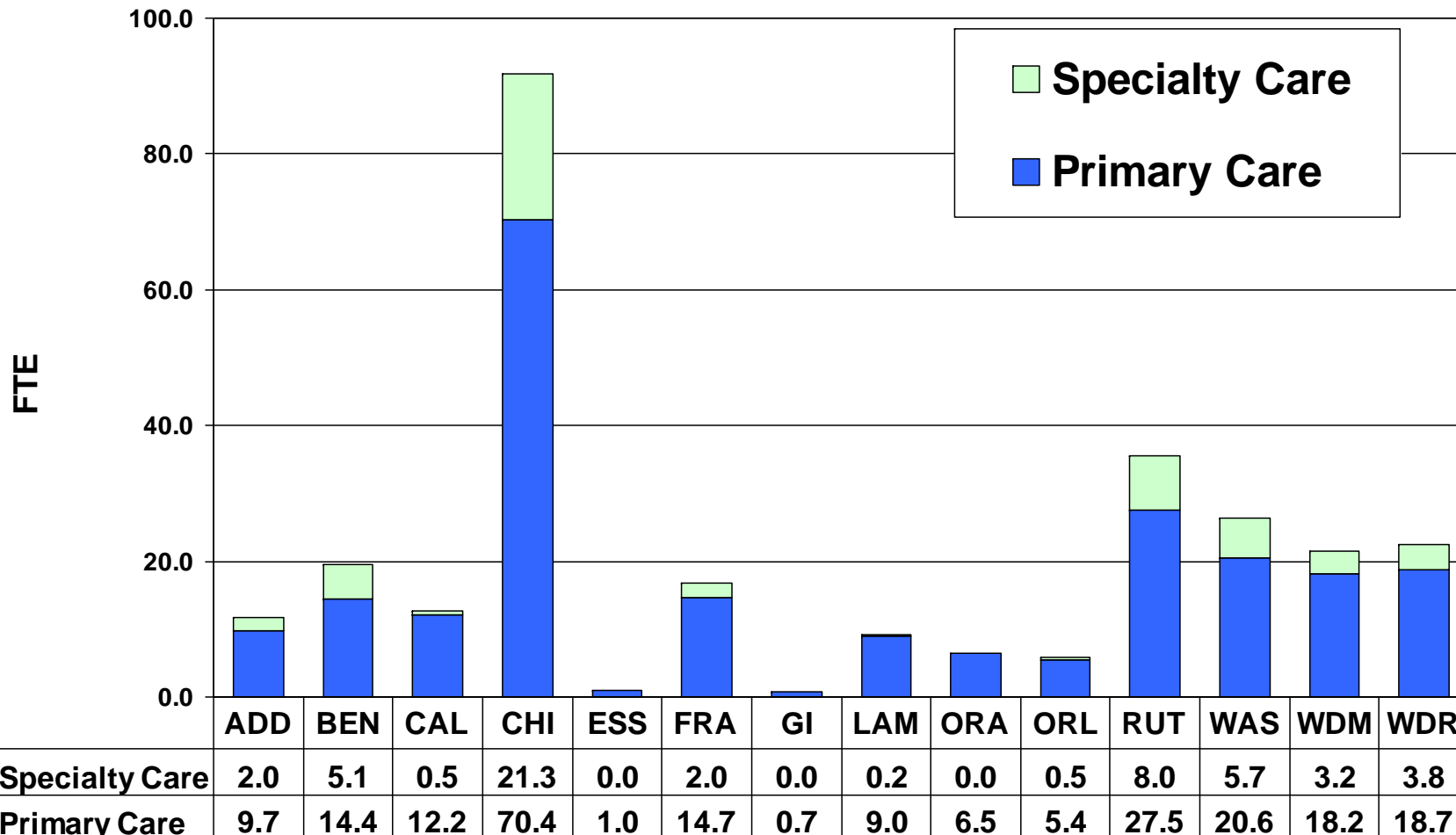


40% of the males, but only 9% of the females, are age 60 or older

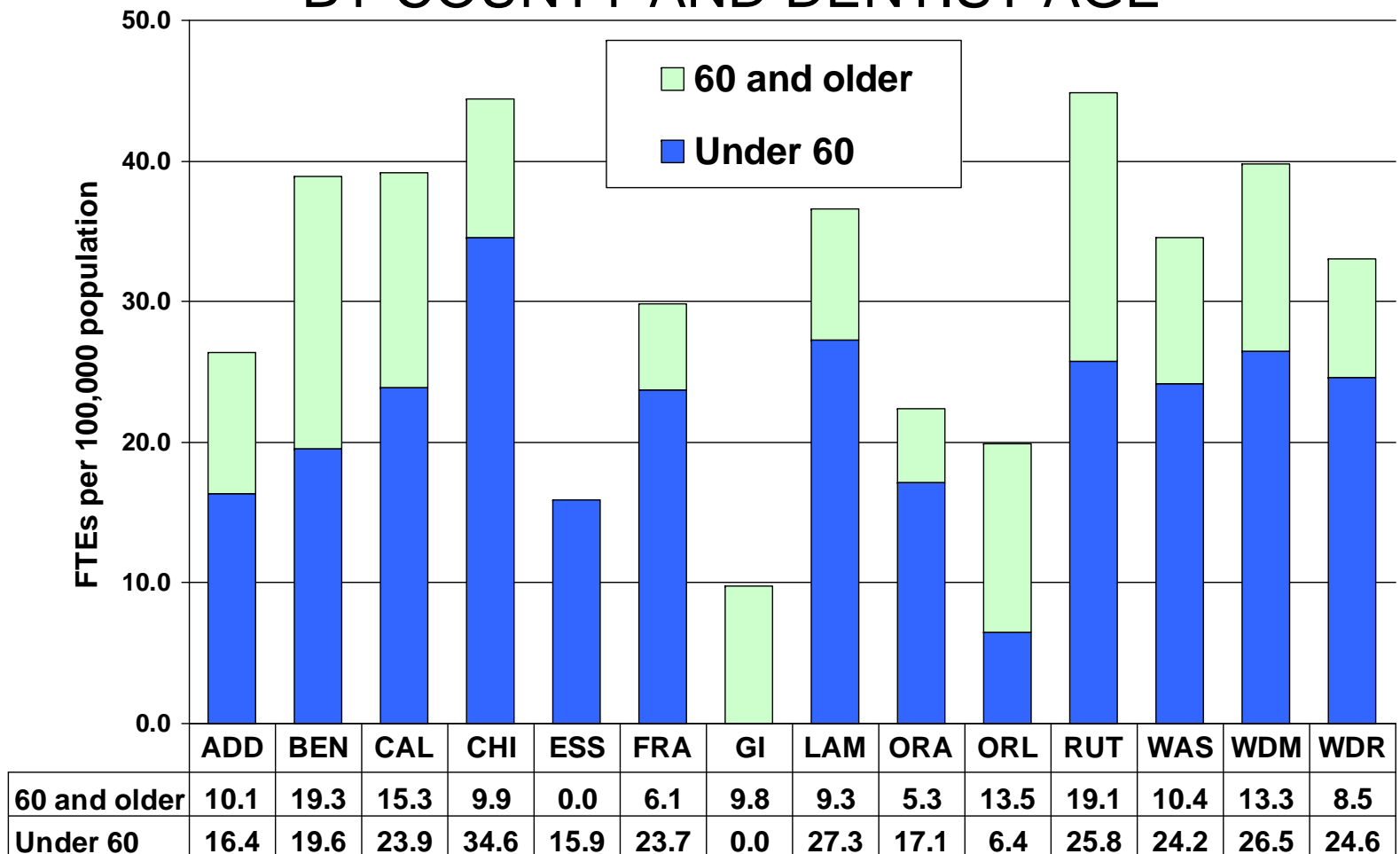
NUMBER OF DENTISTS BY COUNTY



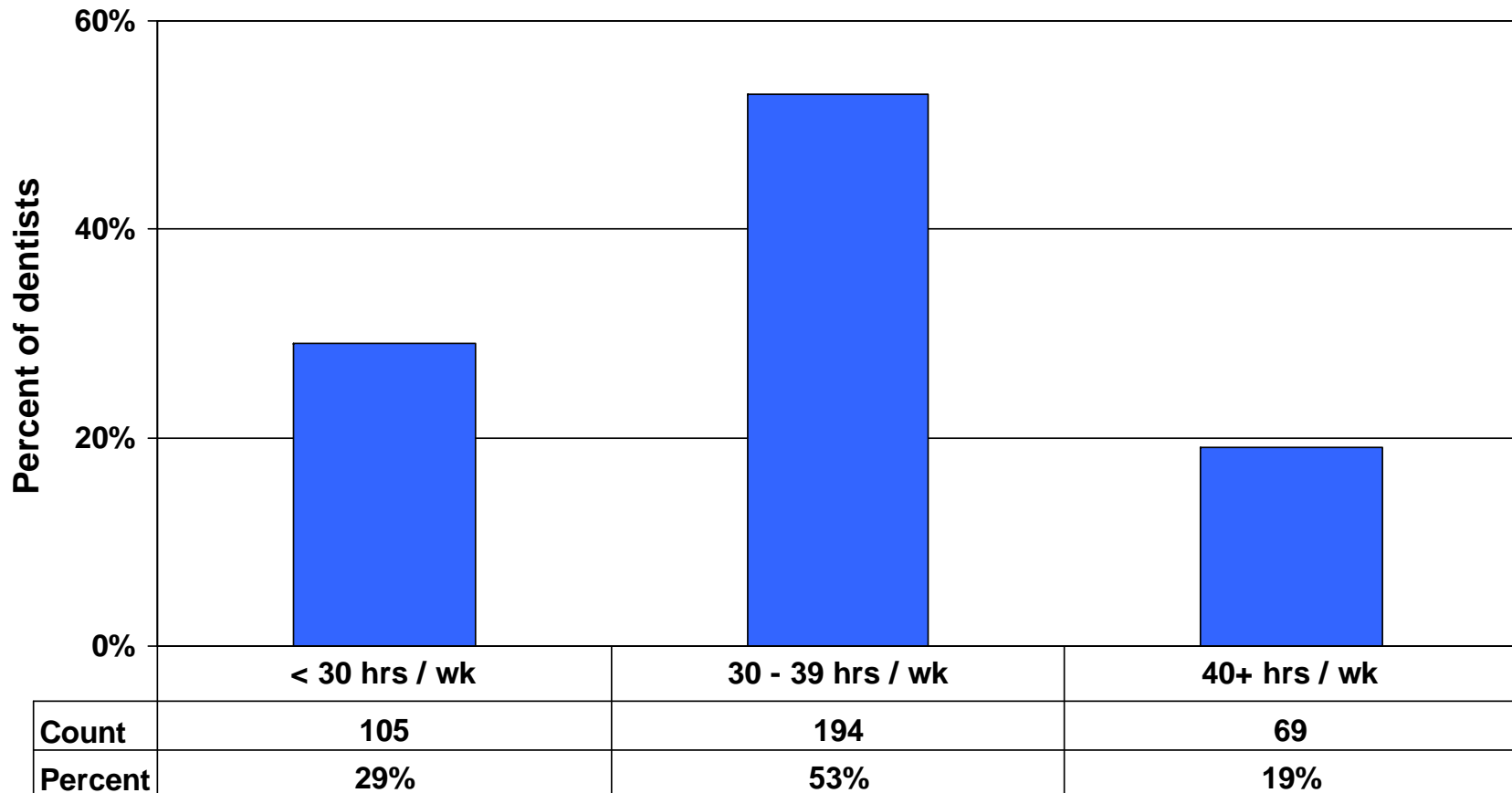
NUMBER OF FULL TIME EQUIVALENT DENTISTS BY COUNTY



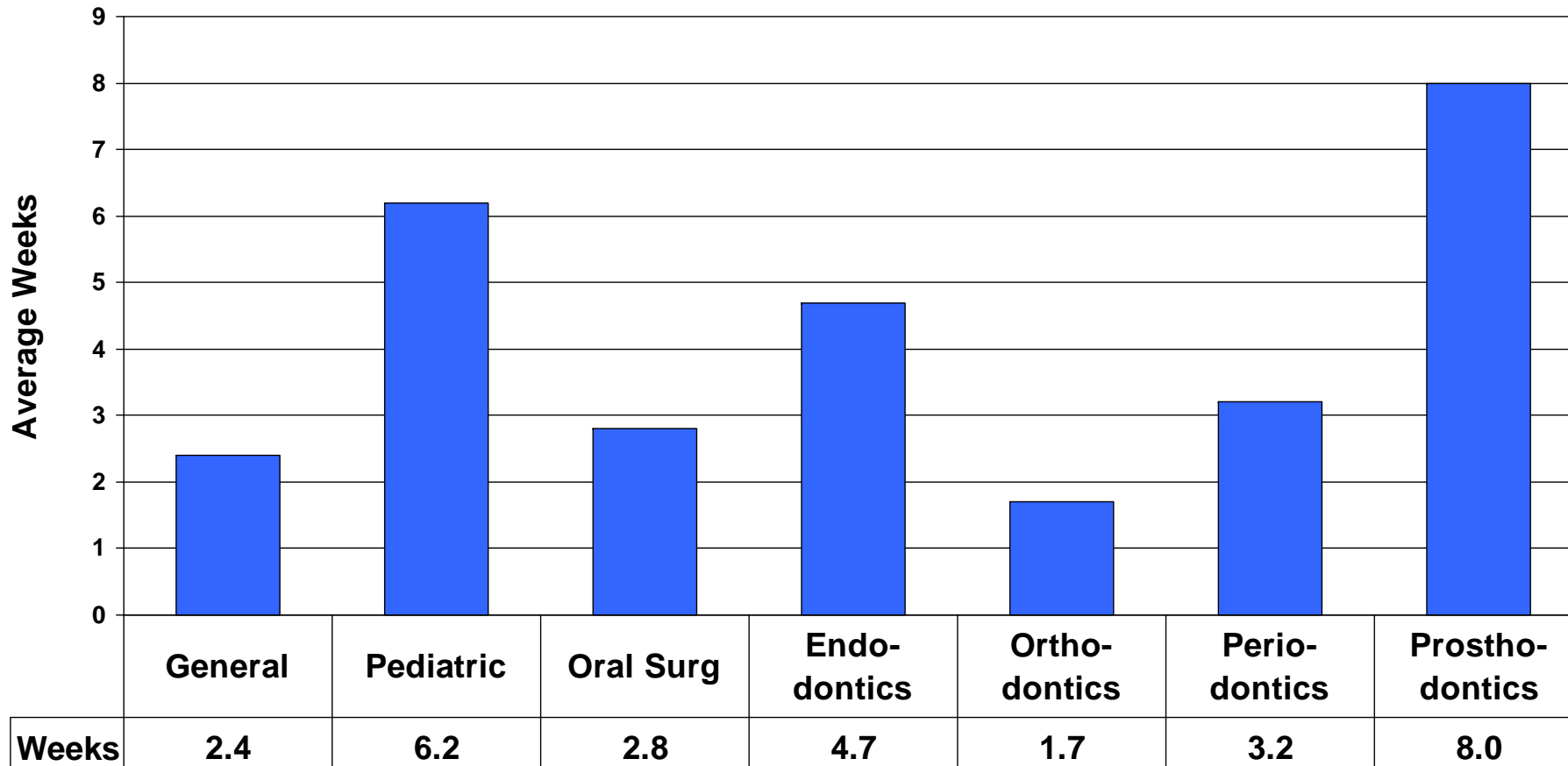
PRIMARY CARE DENTIST TO POPULATION RATIOS BY COUNTY AND DENTIST AGE



PATIENT CARE HOURS PER WEEK

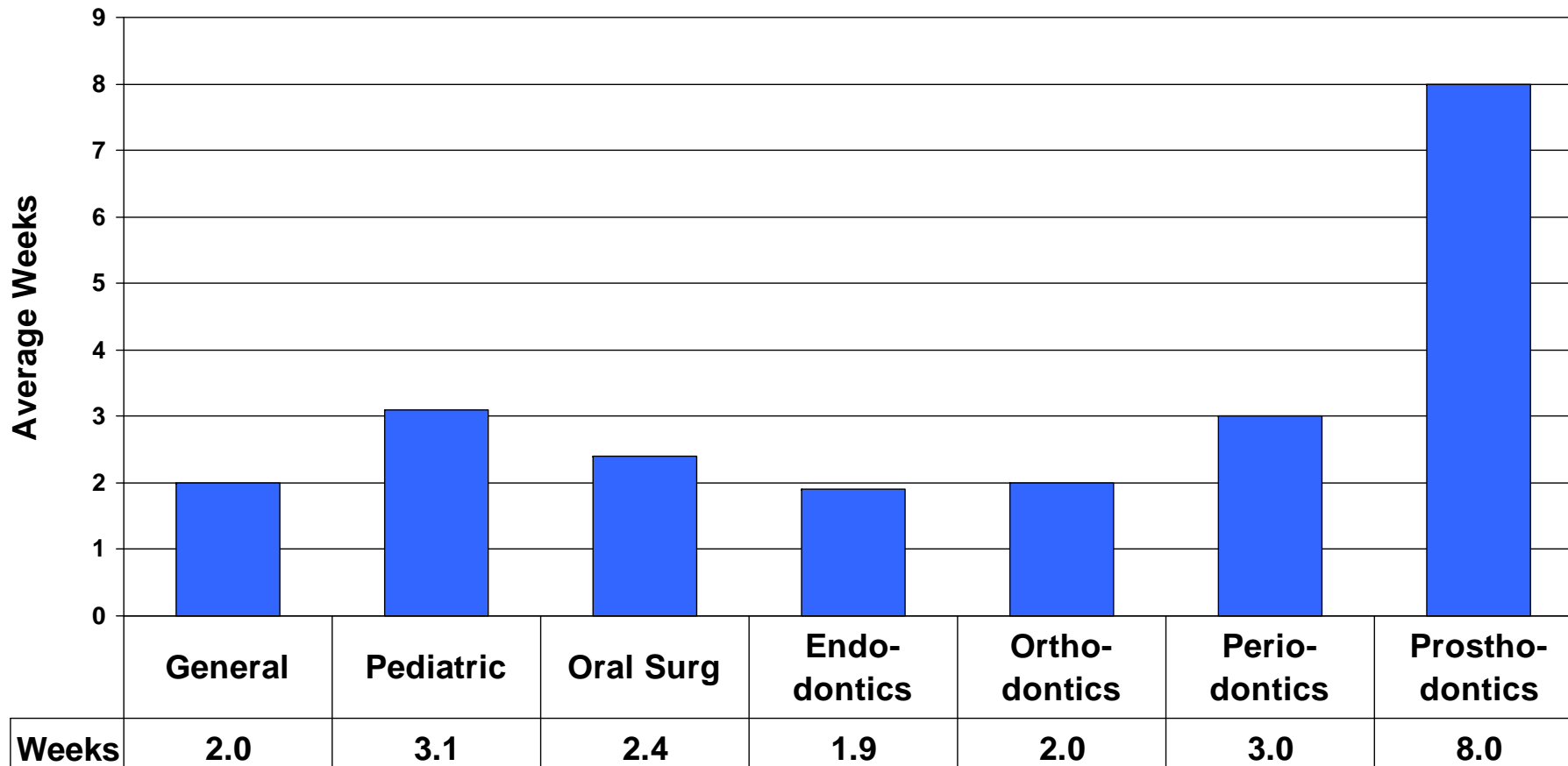


AVERAGE WAIT TIME FOR NEW PATIENTS



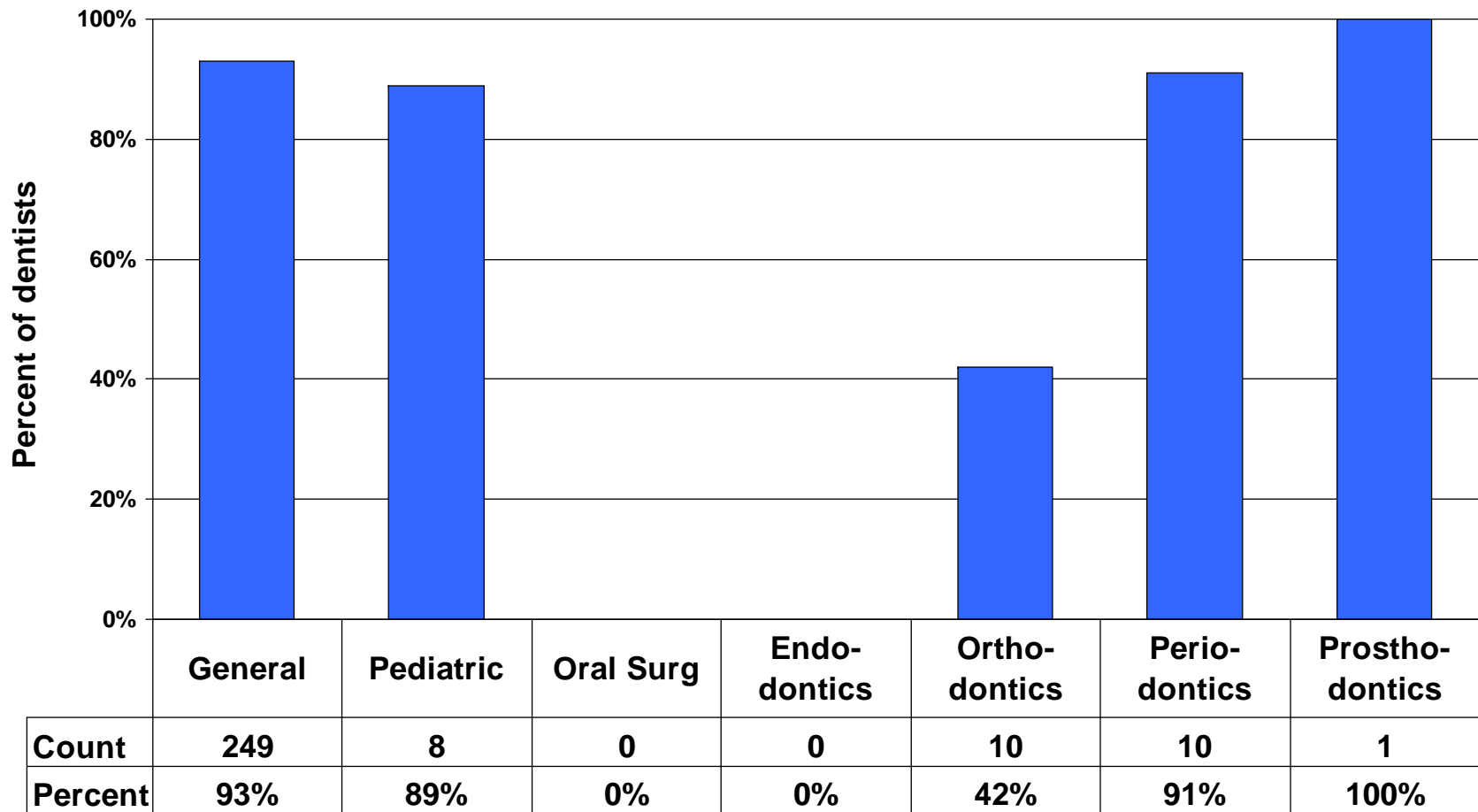
Average wait time for an appointment for new dental patients was 2.7 weeks.

AVERAGE WAIT TIME FOR CURRENT PATIENTS



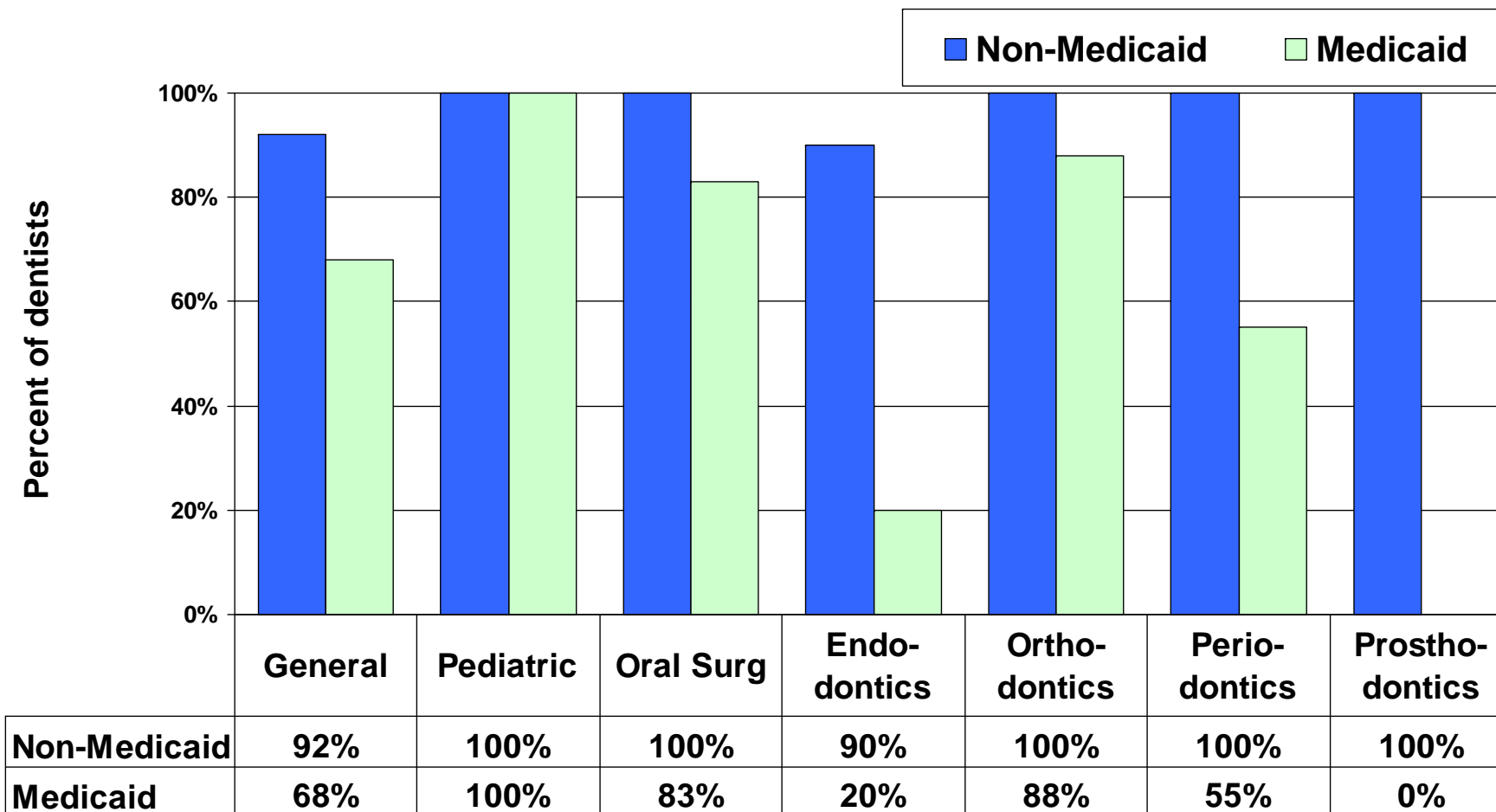
Average wait time for an appointment for current patients was 2.1 weeks.

WORK WITH HYGIENISTS



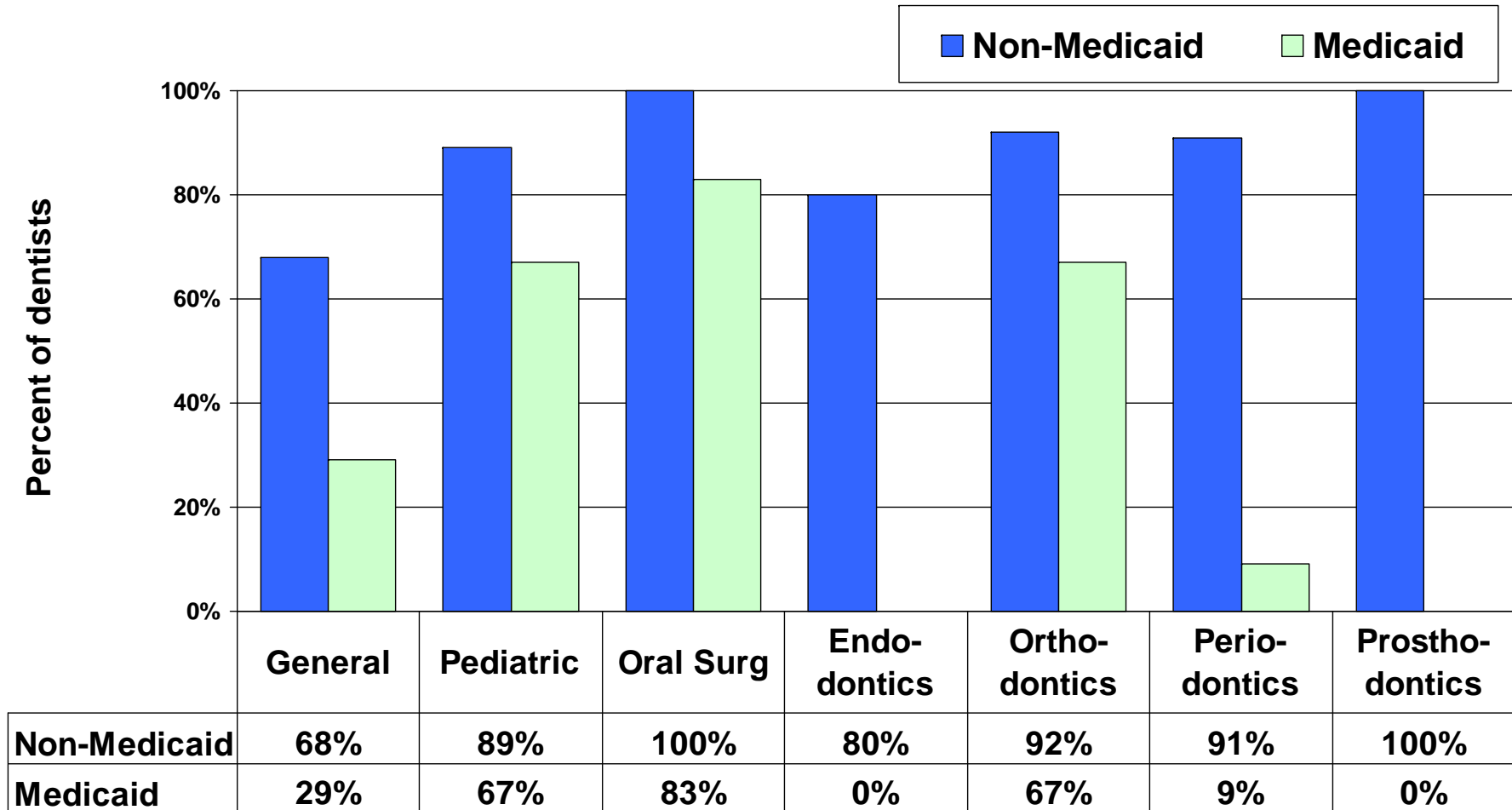
Overall rate was 80%.
Multiple Dentists may work with the same hygienist(s).

ACCEPTING NEW PATIENTS



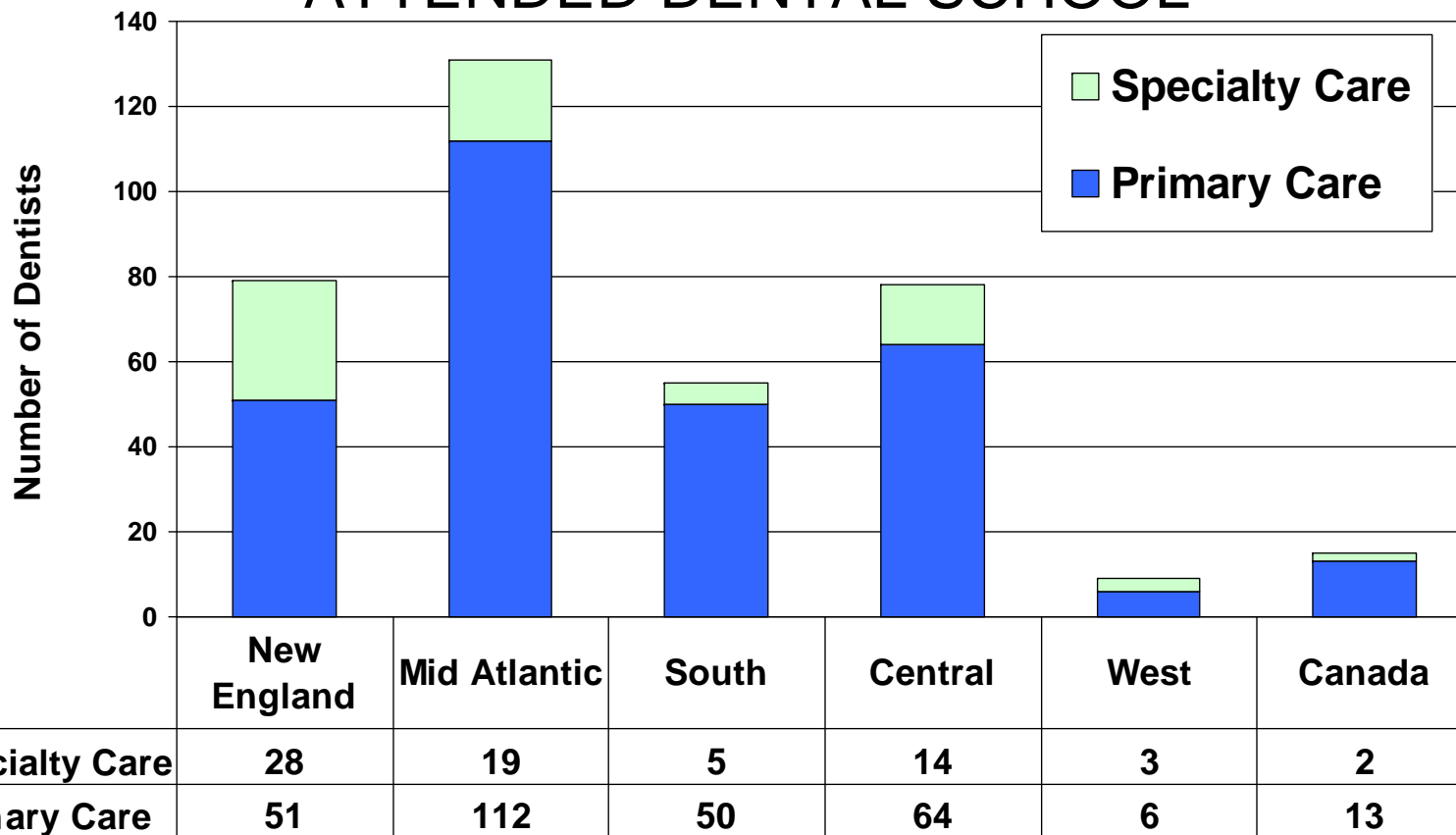
93% accepted new non-Medicaid patients, 69% accepted new Medicaid patients.

ACCEPTING 5+ NEW PATIENTS / MONTH



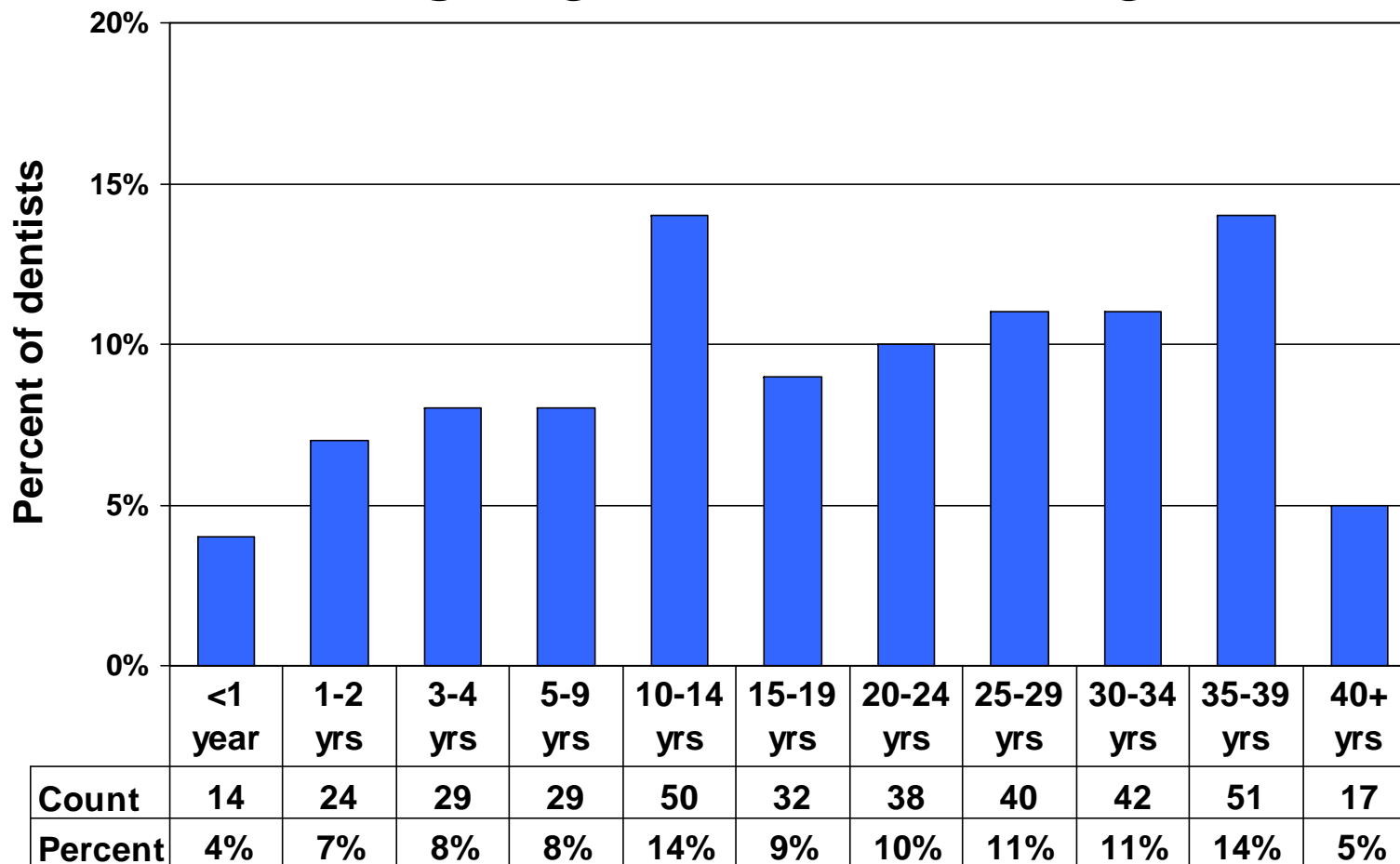
74% accepted 5+ new non-Medicaid patients, 35% accepted 5+ new Medicaid patients.

WHERE VERMONT DENTISTS ATTENDED DENTAL SCHOOL



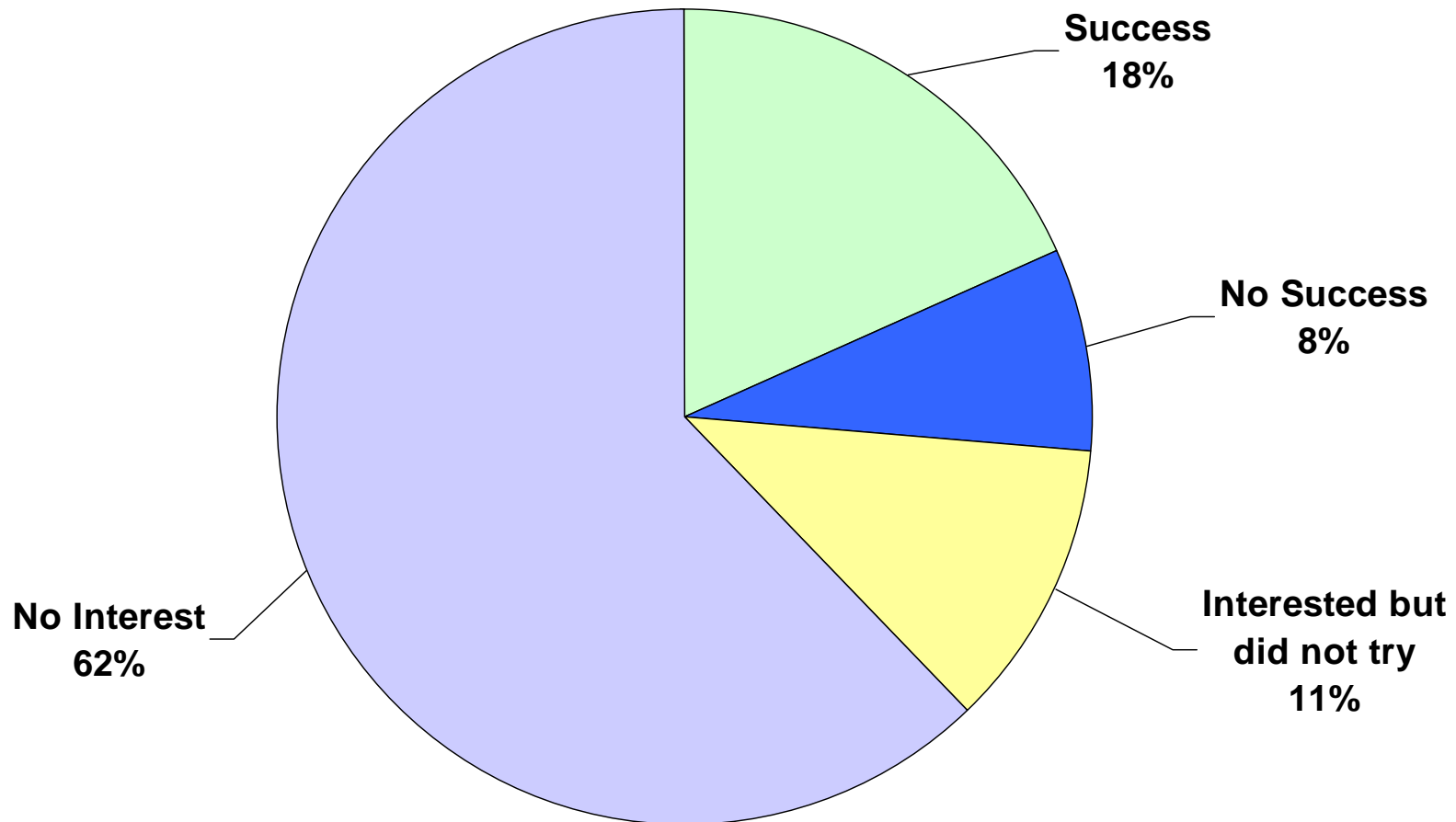
36% of all Vermont dentists and 38% of primary care dentists were trained in the mid-Atlantic region.
 39% of all specialty care dentists were trained in New England.

YEARS WORKED IN VERMONT

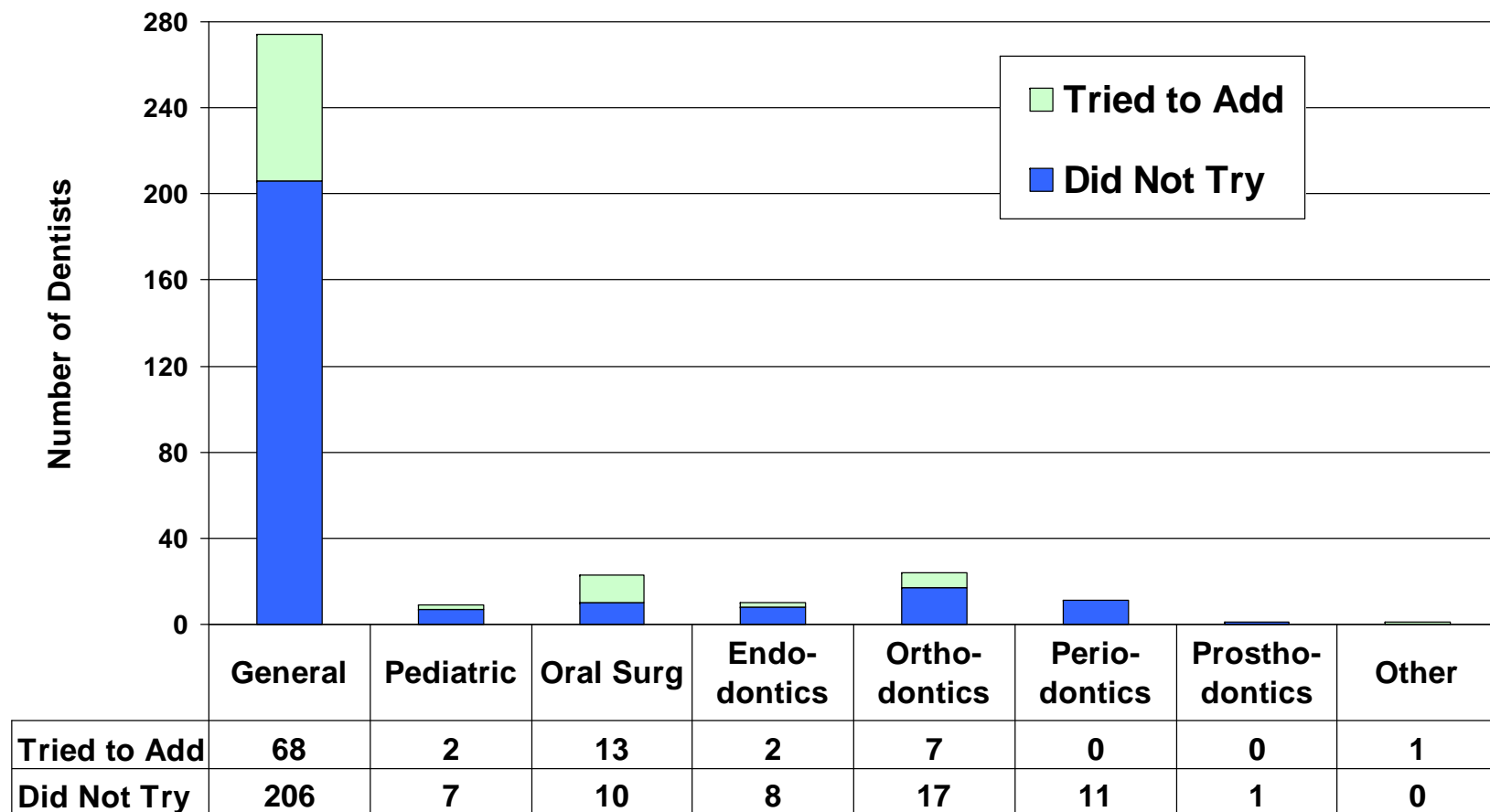


51% of the dentists have worked in Vermont for 20 or more years.

INTERESTED IN ADDING AN ASSOCIATE



INTERESTED IN ADDING AN ASSOCIATE



Tried to add - Includes responses "Success" and "No success".
 Did not try - Includes responses "Interested" and "No interest".

COMPARISON WITH PREVIOUS SURVEYS

Numbers of Dentists by Specialty, 2001-2011

	Count by main specialty					
	2001	2003	2005	2007	2009	2011
Total active dentists	354	367	352	355	366	368
Primary care dentists	277	293	278	282	292	297
General practice	268	284	269	272	280	288
Pediatric dentistry	9	9	9	10	12	9
Specialist dentists	77	74	74	73	74	71
Oral Surgery	23	22	19	24	26	23
Endodontics	10	10	9	7	9	10
Orthodontics	27	26	27	27	24	25
Periodontics	11	10	12	11	12	11
Prosthodontics	4	3	4	2	2	1
Other Specialties	2	3	3	2	1	1

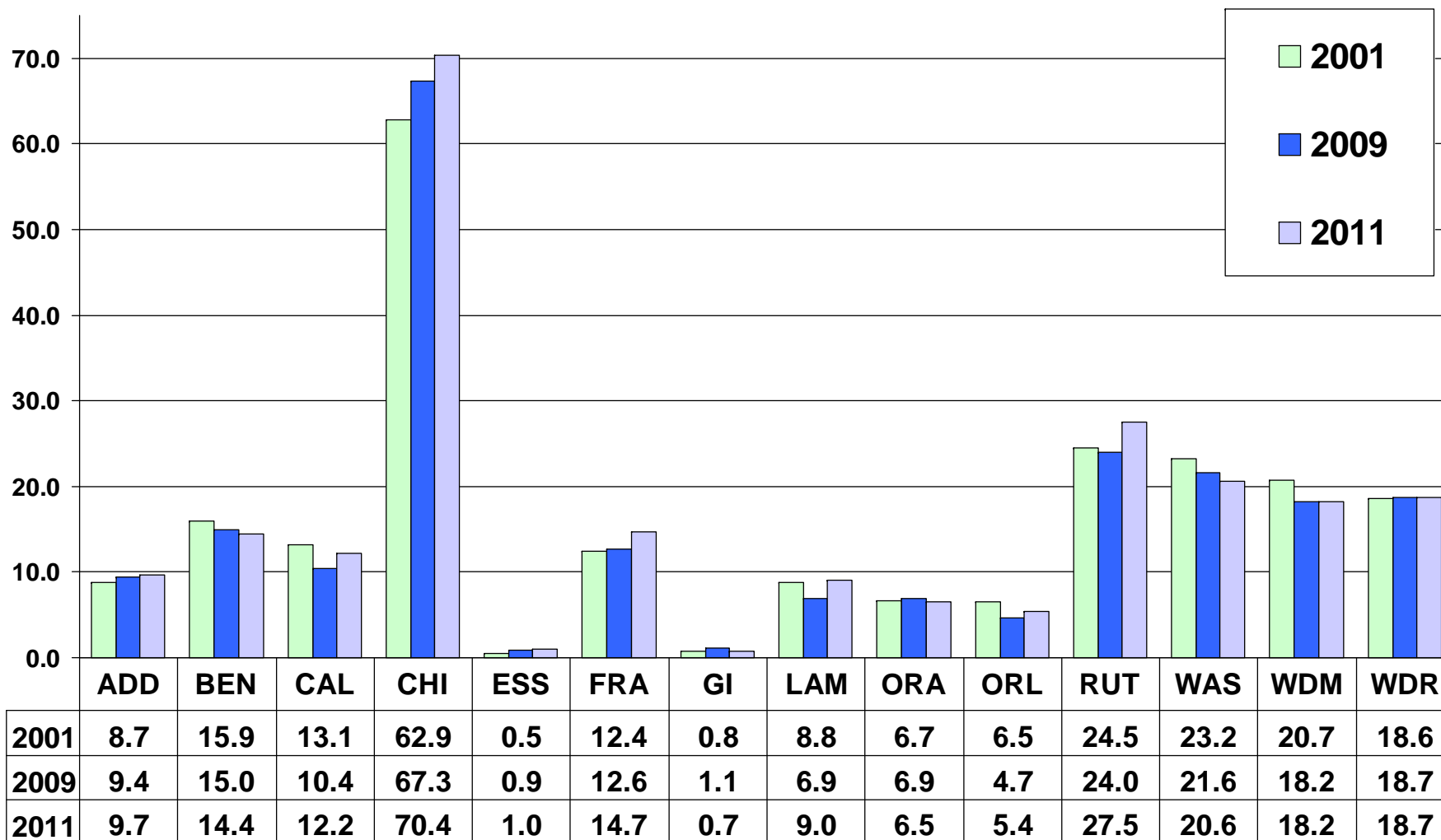
Full Time Equivalents by specialty, 2001-2011

	Full Time Equivalents (FTE)					
	2001	2003	2005	2007	2009	2011
Total active dentists	284.6	280.8	267.1	269.8	271.6	281.2
Primary care dentists	223.4	226.7	216.0	221.6	217.7	229.0
General practice	216.4	219.8	209.1	214.9	209.9	222.6
Pediatric dentistry	6.9	6.9	6.9	6.7	7.8	6.5
Specialist dentists	61.3	54.1	51.1	48.2	53.9	52.1
Oral Surgery	19.7	17.1	15.1	16.2	19.0	17.6
Endodontics	8.9	8.6	7.1	6.4	7.0	7.1
Orthodontics	19.7	17.5	16.9	17.2	17.4	17.9
Periodontics	8.1	6.5	7.2	5.7	7.8	7.7
Prosthodontics	3.0	1.7	1.9	1.5	1.6	0.9
Other Specialties	1.9	2.6	2.7	1.2	1.0	1.0

Selected indicators, 2001-2011

	2001	2003	2005	2007	2009	2011
Total number of active dentists	354	367	352	355	366	368
Percent age 50 or older	49%	53%	57%	59%	62%	63%
Percent age 55 or older	29%	35%	41%	44%	47%	49%
Percent age 60 or older	12%	17%	22%	26%	30%	34%
Average patient care hours per week	33	31	31	31	30	31
Primary care:						
FTEs / 100,000 population	36.5	36.7	34.8	35.5	34.8	36.6
% accepting new patients	85%	88%	88%	90%	92%	92%
accepting new medicaid patients	37%	57%	59%	60%	65%	69%
Average weeks wait - new patients	4.2	3.3	3.5	3.5	2.9	2.6
Percent working with dental hygienists	86%	88%	88%	90%	91%	92%
% of FTEs in Chittenden County	28%	29%	29%	30%	31%	31%
Specialty care:						
FTEs / 100,000 population	10.0	8.8	8.2	7.7	8.6	8.3
% of FTEs in Chittenden County	46%	44%	44%	44%	42%	41%

PRIMARY CARE FTEs, BY COUNTY, 2001-2011



AGE DISTRIBUTION, 2001-2011

