

## Report Timeframe: October 1 to October 7, 2023

**Statewide hospitalization levels: Low.** New COVID-19 admissions are below 10 per 100,000 Vermonters per day.

- New hospital admissions of patients with COVID-19, last 7 days: 4.97 per 100K
  - 31 total new admissions with COVID-19. **Note:** the previous (September 24-30) reporting week's count has been revised to 47, based on corrections from reporting hospitals

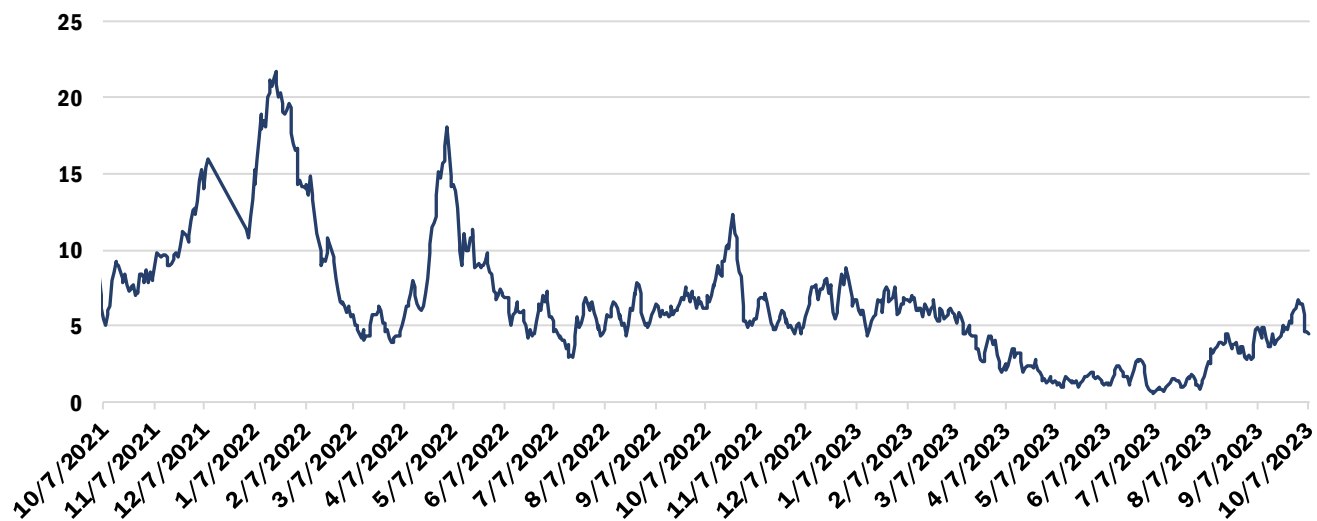
The hospitalizations dataset contains day-level data reported from all Vermont hospitals each Tuesday. Reported numbers are subject to correction by reporting hospitals, and data from several days during the previous reporting week were marked as "corrected" as of October 10, 2023.

The number of reportable COVID-19 cases is still available in this report, below. Laboratory-confirmed and diagnosed COVID-19 cases and COVID-19 outbreaks must still be reported to the Vermont Department of Health

Vermont Department of Health recommendations: [Preventing COVID-19 \(healthvermont.gov\)](https://healthvermont.gov/preventing-covid-19)

## Hospitalizations Over Time

### Daily Hospitalizations With COVID-19 Diagnosis Seven-Day Rolling Average



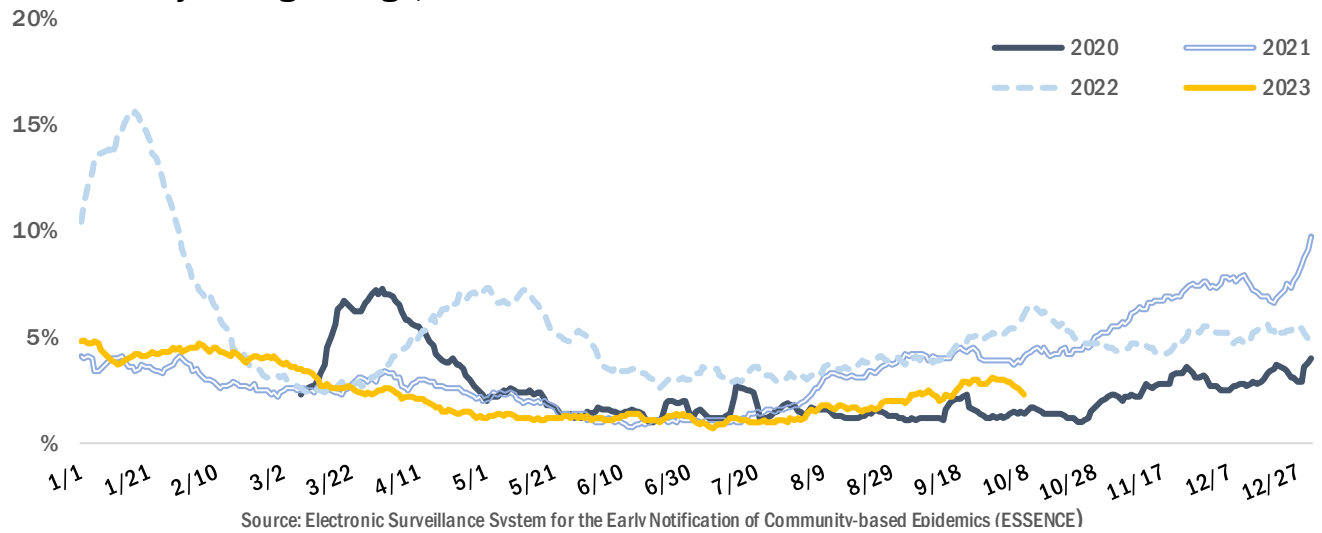
Source: U.S. Department of Health and Human Services HHS Protect

The seven-day rolling average of hospital patients was between four and seven during the most recent week. As noted above, the prior week's count has been revised downward due to reported correction. The number is the daily average of the previous seven days; for example, the value for May 28 is the daily average for the days of May 21 through May 27.

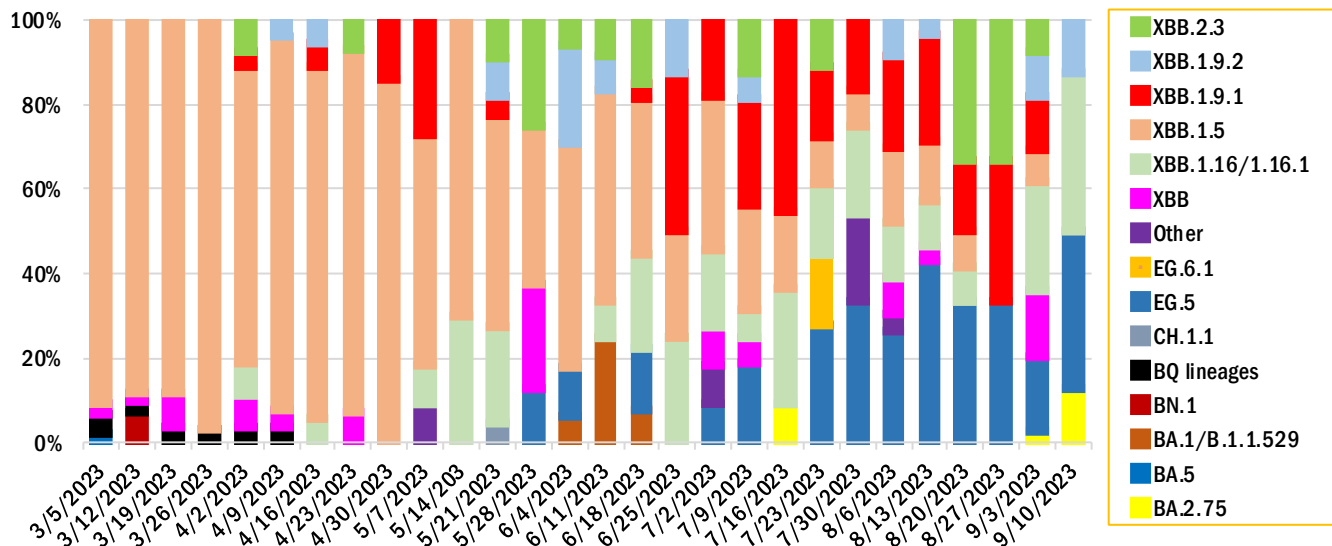
## Syndromic Surveillance

The Electronic Surveillance System for the Early Notification of Community-based Epidemics (ESSENCE) reflects all visits from participating emergency departments<sup>1</sup>, to identify visits for COVID-Like Illness (CLI). During this reporting period the proportion of emergency visits in participating departments that included CLI was 2 to 3 %, but lower than the same time in 2021 and 2022.

### Percent of Emergency Visits with COVID-Like Illness Seven-Day Rolling Average, over Calendar Year



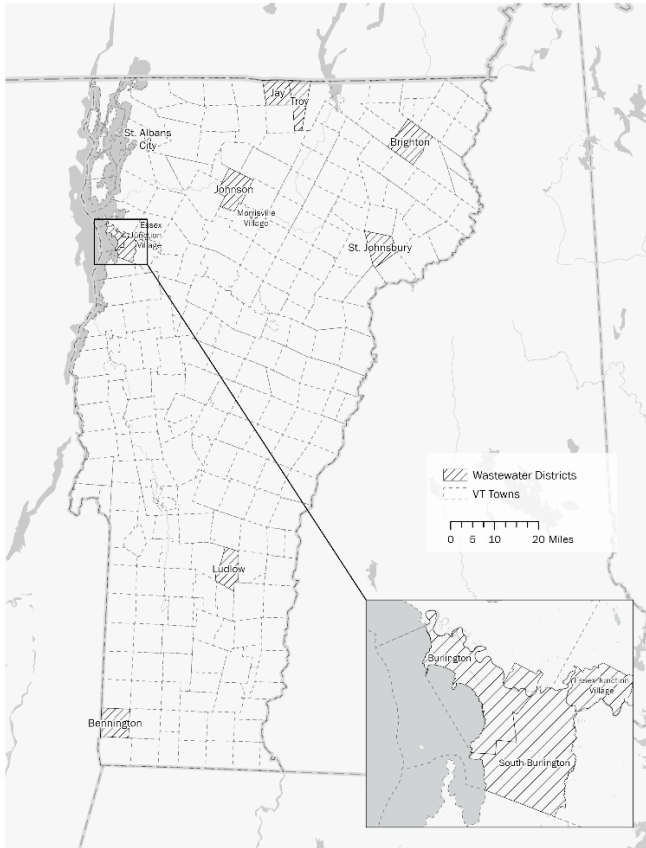
## Proportion of sequenced variants



(Sources: LabCorp, Quest, Helix, Health Department Whole Genome Sequencing program). Only 3 specimens collected during the week of 8/27le were sequenced.

<sup>1</sup> All Vermont hospitals and two urgent care clinics are included in ESSENCE.

## Wastewater Monitoring



Several Vermont wastewater districts participate in the [National Wastewater Surveillance System \(NWSS\)](#) and/or [WastewaterSCAN](#).

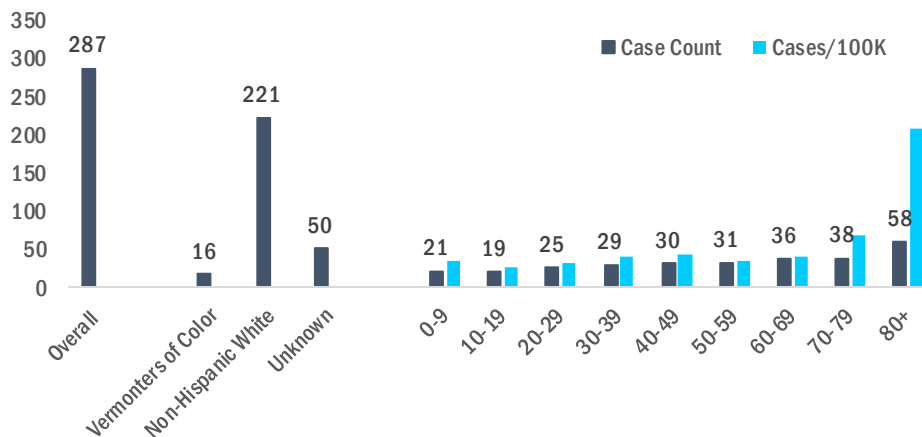
There will be a data gap over the coming weeks for most sites due to a laboratory contract transition for the National Wastewater Surveillance System (NWSS) sites.

NWSS Site	Current Trend
Bennington	*
Brighton	*
Burlington (Main plant)	*
Burlington (North plant)	*
Essex Junction	Plateau
Montpelier	Plateau
Ludlow	*
South Burlington	Plateau
St. Albans City	*
St. Johnsbury	*
Troy / Jay WWTP	*
Winooski	*

\*Data will be reported when available.

## Identified Cases

### Vermont Weekly Case Counts/Rates



Note: Case counts and rates are calculated by *confirmed* and *probable* cases reported to the Health Department.

To calculate rates, counts are divided by 2019 Vermont population estimates for respective category and expressed per 100,000 in each category.

Due to a high number of cases missing race/ethnicity data, rates are not provided for race/ethnicity categories.

## COVID-19 Outbreaks Reported October 3 to October 9

For purposes of this report, an outbreak is defined as three or more epidemiologically linked cases of COVID-19, where at least one such case has been laboratory or otherwise clinically confirmed as COVID-19.

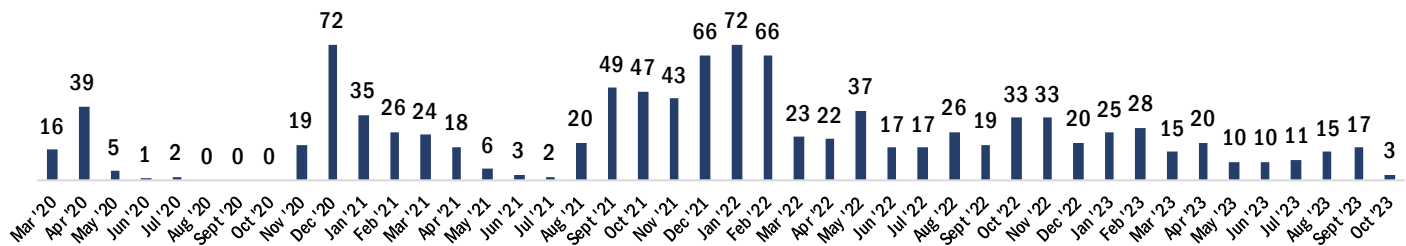
Facility type	New Outbreaks Reported 10/3 – 10/9
Long-term Care (LTC)	4
Non-LTC Healthcare	1
Correctional Facility	-
School/childcare	4
Other	-

County	New Outbreaks Reported 10/3– 10/9
Addison	-
Bennington	-
Caledonia	1
Chittenden	2
Essex	1
Franklin	-
Grand Isle	-
Lamoille	-
Orange	-
Orleans	-
Rutland	-
Washington	2
Windham	2
Windsor	1

## Cumulative COVID-19 Deaths as of October 7, 2023

Total	Age group								
	Under 10	10-19	20-29	30-39	40-49	50-59	60-69	70-79	80+
1032	1	0	2	11	20	71	104	238	585

## Monthly COVID-19 Deaths



Note: Deaths are from registered death certificates and represent preliminary data. A change in death count may represent new deaths, corrections, or other updates.

Data Source: Vermont Department of Health Vital Statistics System.

For more information about this report, please contact [john.davy@vermont.gov](mailto:john.davy@vermont.gov)