

Report Timeframe: July 23 to July 29, 2023

Statewide hospitalization levels: Low. New COVID-19 admissions are below 10 per 100,000 Vermonters per day.

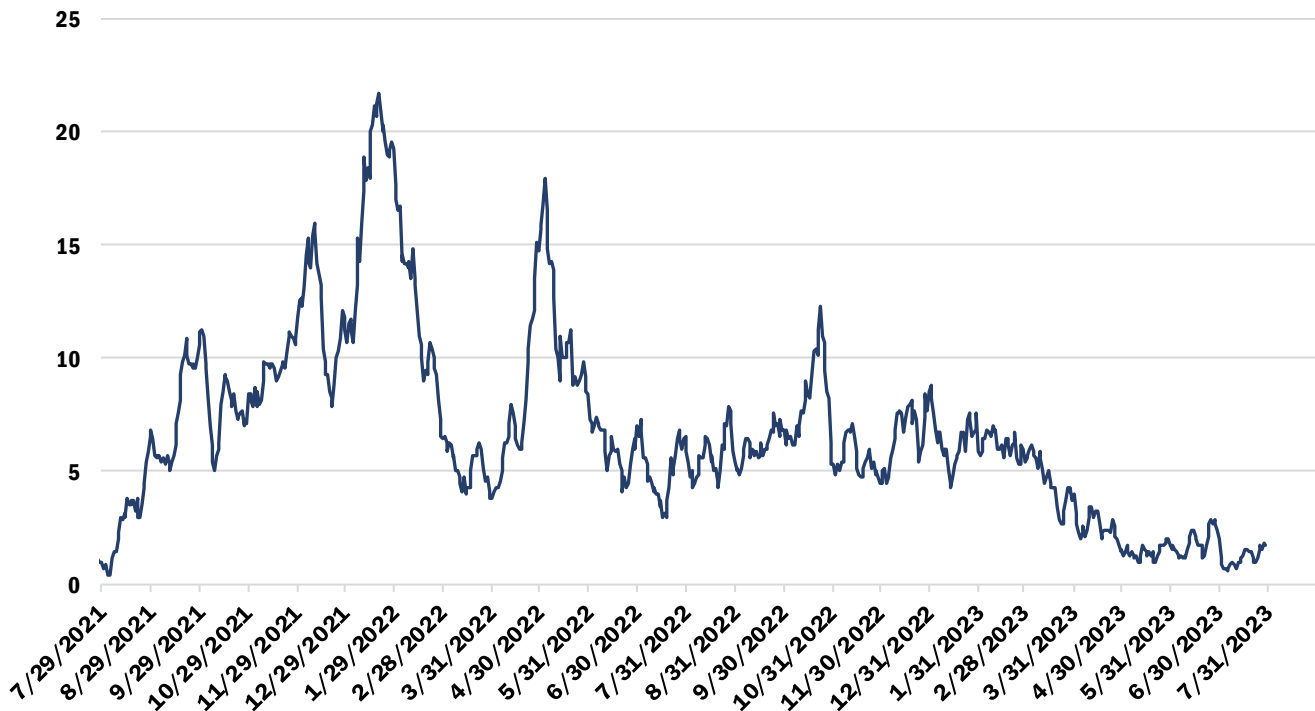
- New hospital admissions of patients with COVID-19, last 7 days: 1.92 per 100K
 - 12 total new admissions with COVID-19

The number of reportable COVID-19 cases is still available in this report, below. Laboratory-confirmed and diagnosed COVID-19 cases and COVID-19 outbreaks must still be reported to the Vermont Department of Health

Vermont Department of Health recommendations: [Preventing COVID-19 \(healthvermont.gov\)](https://healthvermont.gov/preventing-covid-19)

Hospitalizations Over Time

Daily Hospitalizations With COVID-19 Diagnosis Seven-Day Rolling Average



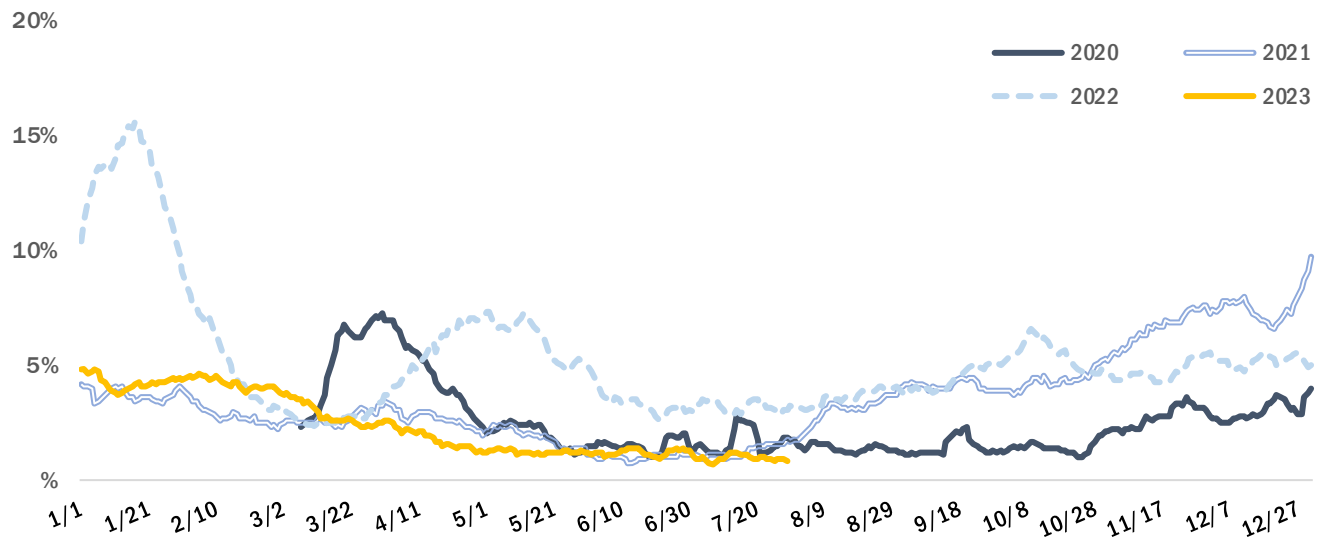
Source: U.S. Department of Health and Human Services HHS Protect

The seven-day rolling average of hospital patients admitted with a laboratory-confirmed COVID-19 was around one. The number is the daily average of the previous seven days; for example, the value for May 28 is the daily average for the days of May 21 through May 27.

Syndromic Surveillance

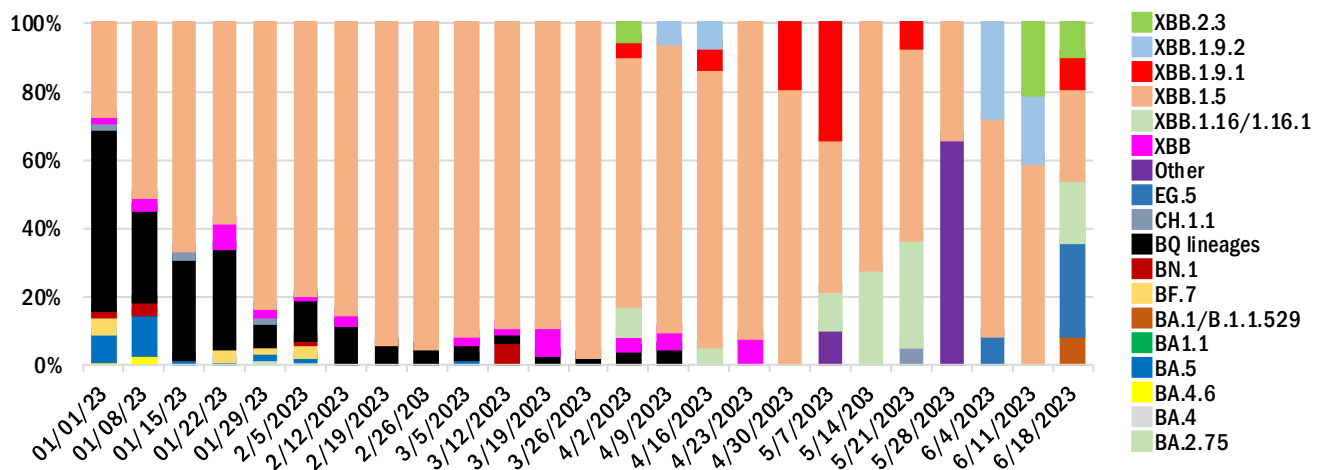
The Electronic Surveillance System for the Early Notification of Community-based Epidemics (ESSENCE) reflects all individual visits from participating emergency departments¹, to identify visits for COVID-Like Illness (CLI). During this reporting period the proportion of emergency visits in participating departments that included CLI was less than 1%, lower than the same time in 2022.

Percent of Emergency Visits with COVID-Like Illness Seven-Day Rolling Average, over Calendar Year



Source: Electronic Surveillance System for the Early Notification of Community-based Epidemics (ESSENCE)

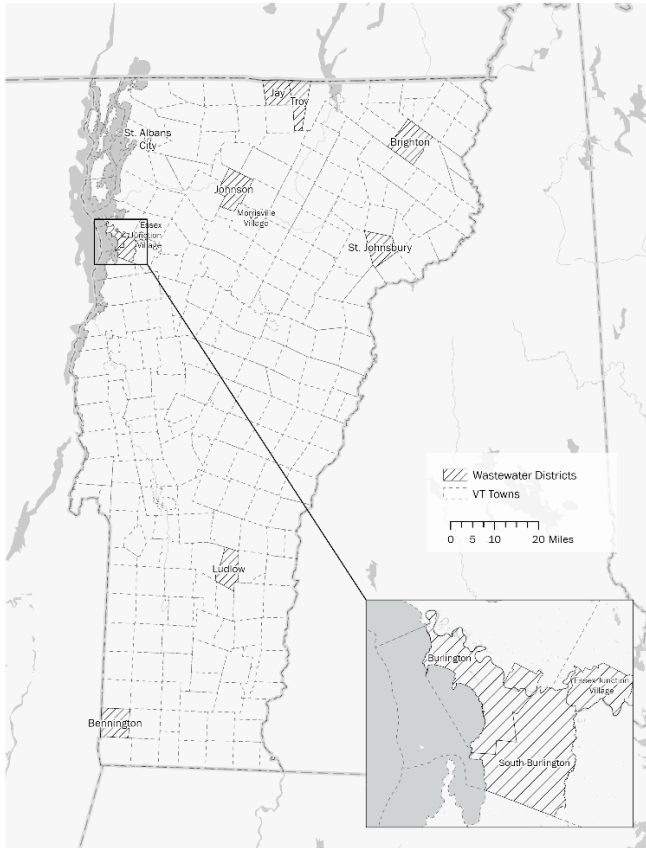
Proportion of sequenced variants



Only 3 specimens are available for the week of 5/28/23. (Sources: LabCorp; Quest; Health Department Whole Genome Sequencing program)

¹ All Vermont hospitals and two urgent care clinics are included in ESSENCE.

Wastewater Monitoring

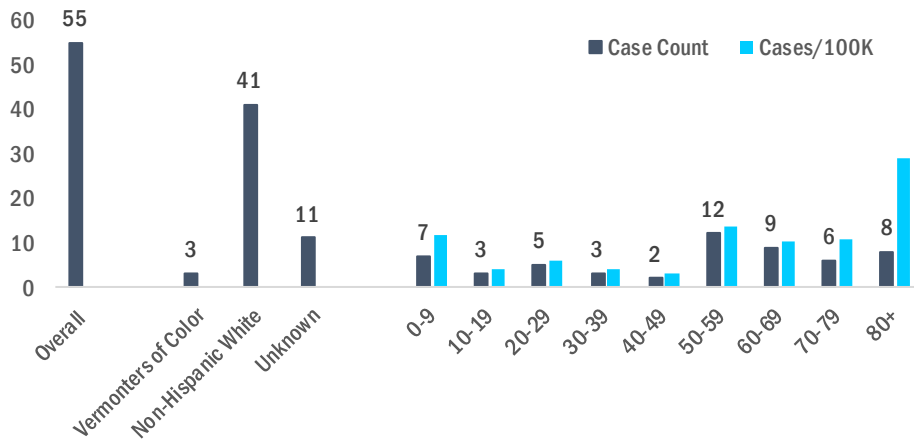


Several Vermont wastewater districts participate with the National Wastewater Surveillance System (NWSS).

NWSS Site	15-day % change
Bennington	Increase 100-999%
Brighton	*
Burlington (Main plant)	Decrease 10-99%
Burlington (North plant)	Increase 100-999%
Essex Junction	Increase 10-99%
Ludlow	*
South Burlington	Increase 100-999%
St. Albans City	Decrease 10-99%
St. Johnsbury	Decrease 10-99%
Troy / Jay WWTP	Increase 100-999%
Winooski	Decrease 0-9%

Identified Cases

Vermont Weekly Case Counts/Rates



Note: Case counts and rates are calculated by *confirmed* and *probable* cases reported to the Health Department.

To calculate rates, counts are divided by 2019 Vermont population estimates for respective category and expressed per 100,000 in each category.

Due to a high number of cases missing race/ethnicity data, rates are not provided for race/ethnicity categories.

COVID-19 Outbreaks Reported July 25 to July 31

For purposes of this report, an outbreak is defined as three or more epidemiologically linked cases of COVID-19, where at least one such case has been laboratory or otherwise clinically confirmed as COVID-19.

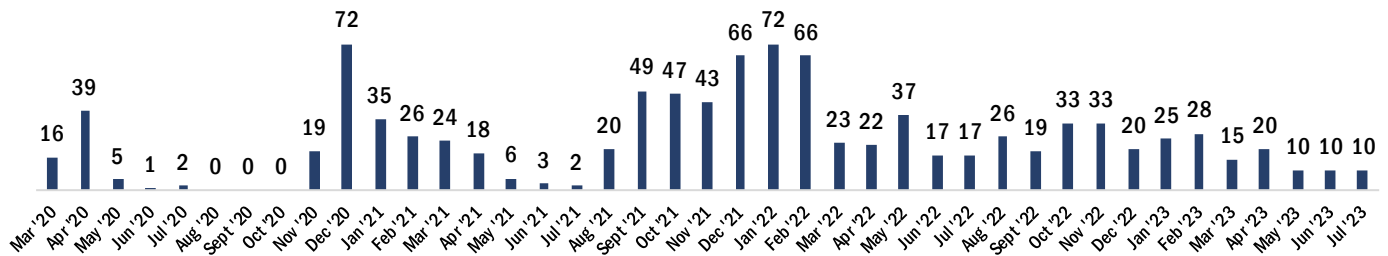
Facility type	New Outbreaks Reported 7/25- 7/31
Long-term Care (LTC)	2
Non-LTC Healthcare	-
Correctional Facility	-
School/childcare	-
Other	1

County	New Outbreaks Reported 7/25- 7/31
Addison	-
Bennington	-
Caledonia	-
Chittenden	-
Essex	-
Franklin	-
Grand Isle	-
Lamoille	-
Orange	-
Orleans	-
Rutland	-
Washington	2
Windham	-
Windsor	1

Cumulative COVID-19 Deaths as of July 29, 2023

Total	Age group								
	Under 10	10-19	20-29	30-39	40-49	50-59	60-69	70-79	80+
996	1	0	2	11	19	70	101	229	563

Monthly COVID-19 Deaths



Note: Deaths are from registered death certificates and represent preliminary data. A change in death count may represent new deaths, corrections, or other updates.

Data Source: Vermont Department of Health Vital Statistics System.

For more information about this report, please contact john.davy@vermont.gov