

## Report Timeframe: October 29 to November 4, 2023

**Statewide hospitalization levels: Low.** New COVID-19 admissions are below 10 per 100,000 Vermonters per day.

- New hospital admissions of patients with COVID-19, last 7 days: 3.53 per 100K
  - 22 total new admissions with COVID-19.

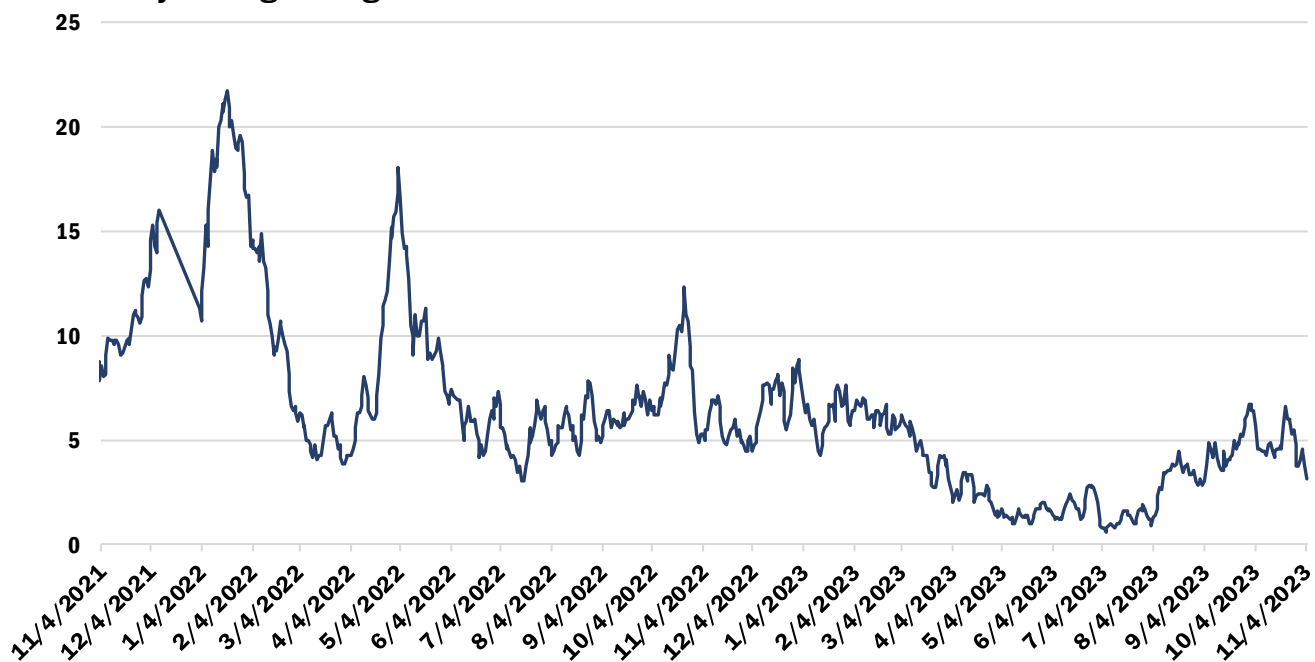
The hospitalizations dataset contains day-level data reported from all Vermont hospitals each Tuesday. Reported numbers are subject to correction.

The number of reportable COVID-19 cases is still available in this report, below. Laboratory-confirmed and diagnosed COVID-19 cases and COVID-19 outbreaks must still be reported to the Vermont Department of Health

Vermont Department of Health recommendations: [Preventing COVID-19 \(healthvermont.gov\)](https://healthvermont.gov)

## Hospitalizations Over Time

### Daily Hospitalizations With COVID-19 Diagnosis Seven-Day Rolling Average



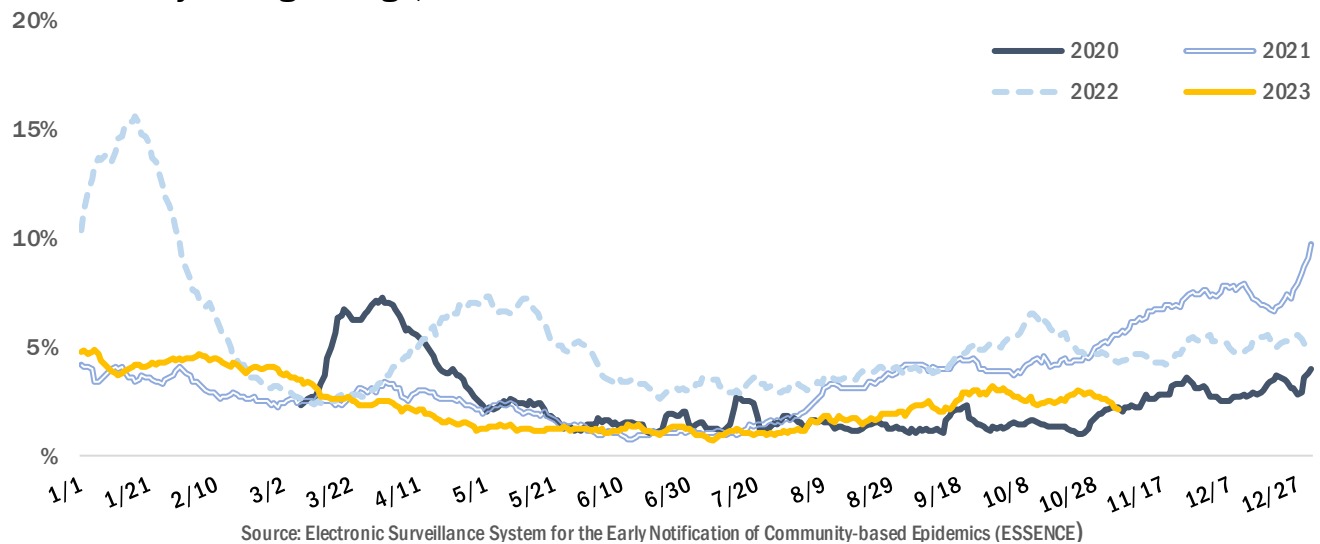
Source: U.S. Department of Health and Human Services HHS Protect

The seven-day rolling average of hospital patients was around four to five during the most recent week. The number is the daily average of the previous seven days; for example, the value for May 28 is the daily average for the days of May 21 through May 27.

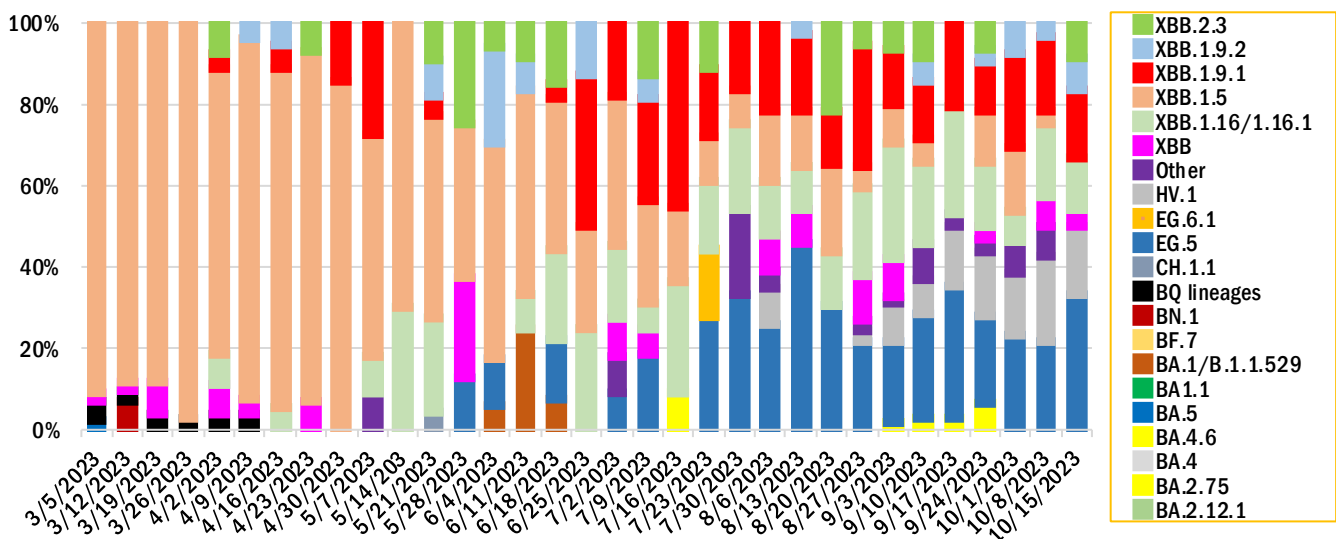
## Syndromic Surveillance

The Electronic Surveillance System for the Early Notification of Community-based Epidemics (ESSENCE) reflects all visits from participating emergency departments<sup>1</sup>, to identify visits for COVID-Like Illness (CLI). During this reporting period the proportion of emergency visits in participating departments that included CLI was 2 to 3%, lower than the same time in 2021 and 2022.

### Percent of Emergency Visits with COVID-Like Illness Seven-Day Rolling Average, over Calendar Year



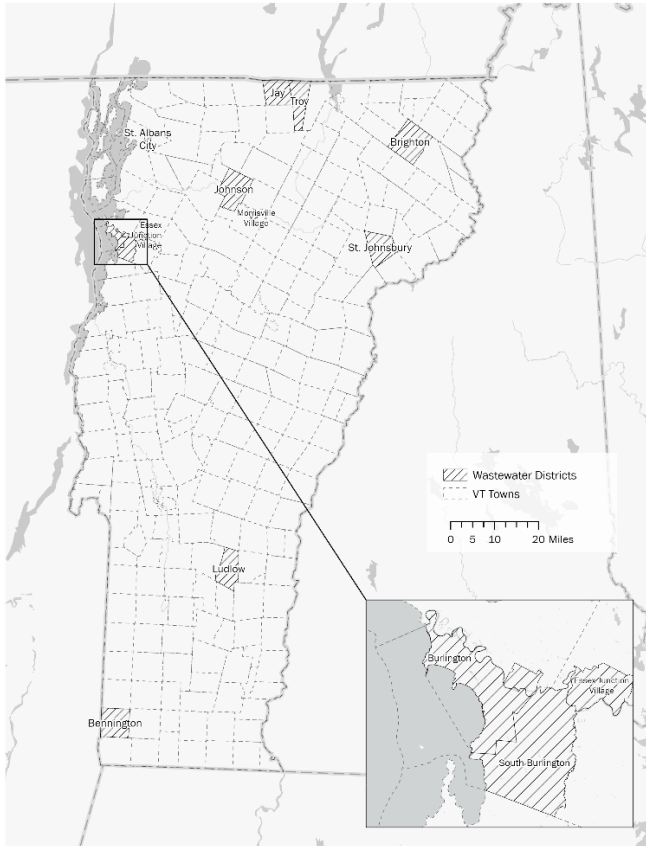
## Proportion of sequenced variants



HV.1 and EG.1 account for about 50% of circulating virus as of mid-October. (Sources: LabCorp, Quest, Helix, Health Department Whole Genome Sequencing program).

<sup>1</sup> All Vermont hospitals and two urgent care clinics are included in ESSENCE.

## Wastewater Monitoring



Several Vermont wastewater districts participate in the [National Wastewater Surveillance System \(NWSS\)](#) and/or [WastewaterSCAN](#).

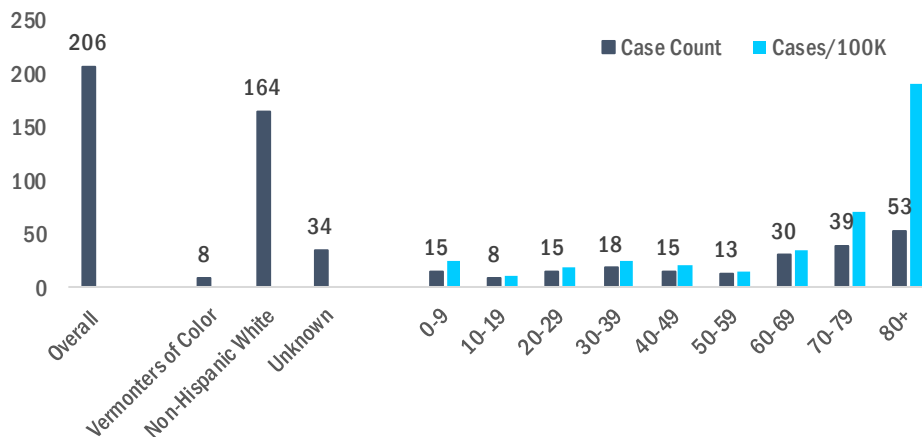
There will be a data gap over the coming weeks for most sites due to a laboratory contract transition for the National Wastewater Surveillance System (NWSS) sites.

NWSS Site	Current Trend
Bennington	*
Brighton	*
Burlington (Main plant)	*
Burlington (North plant)	*
Essex Junction	Plateau
Montpelier	Plateau
Ludlow	*
South Burlington	Sustained Decrease
St. Albans City	*
St. Johnsbury	*
Troy / Jay WWTP	*
Winooski	*

\*Data will be reported when available.

## Identified Cases

### Vermont Weekly Case Counts/Rates



Note: Case counts and rates are calculated by *confirmed* and *probable* cases reported to the Health Department.

To calculate rates, counts are divided by 2019 Vermont population estimates for respective category and expressed per 100,000 in each category.

Due to a high number of cases missing race/ethnicity data, rates are not provided for race/ethnicity categories.

**COVID-19 Outbreaks Reported October 31 to November 6**

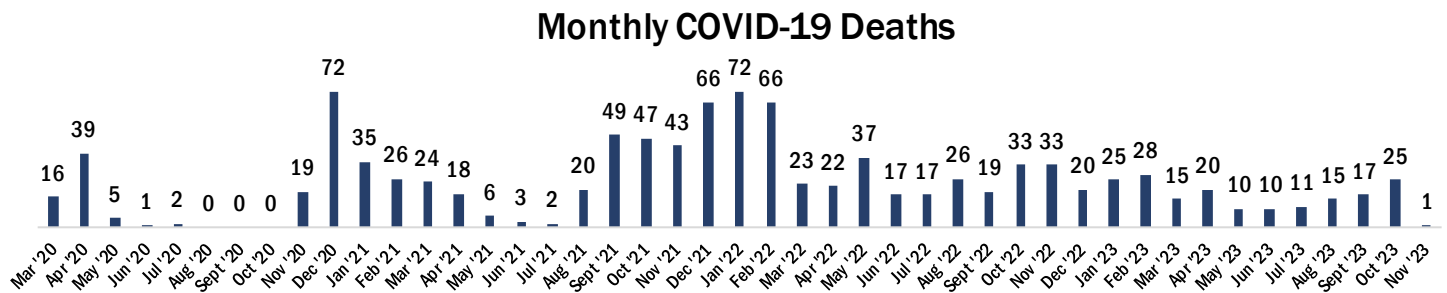
For purposes of this report, an outbreak is defined as three or more epidemiologically linked cases of COVID-19, where at least one such case has been laboratory or otherwise clinically confirmed as COVID-19.

Facility type	New Outbreaks Reported 10/31 - 11/6
Long-term Care (LTC)	1
Non-LTC Healthcare	-
Correctional Facility	-
School/childcare	1
Other	1

County	New Outbreaks Reported 10/31- 11/6
Addison	-
Bennington	-
Caledonia	-
Chittenden	-
Essex	-
Franklin	1
Grand Isle	-
Lamoille	-
Orange	-
Orleans	-
Rutland	-
Washington	-
Windham	1
Windsor	1

**Cumulative COVID-19 Deaths as of November 4, 2023**

Total	Age group								
	Under 10	10-19	20-29	30-39	40-49	50-59	60-69	70-79	80+
1055	1	0	2	11	20	71	105	241	604



Note: Deaths are from registered death certificates and represent preliminary data. A change in death count may represent new deaths, corrections, or other updates.

Data Source: Vermont Department of Health Vital Statistics System.

For more information about this report, please contact [john.davy@vermont.gov](mailto:john.davy@vermont.gov)