

## 2021 Nurse Staffing Data

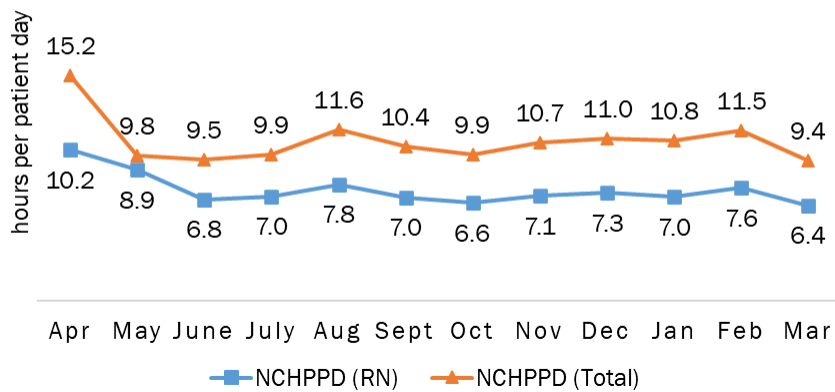
### Copley Hospital Acute Care Nursing Unit

Copley's Medical/Surgical Unit and Special Care Unit merged to create a 21 licensed bed Acute Care Nursing Unit in October 2017, caring for patients of all ages. Types of services provided include care of people with general medical/surgical issues with an acuity adaptable care model being able to provide a higher level of care if needed that may require additional monitoring. We also provide end-of-life care, rehabilitative care, skilled nursing level of care, and care for stable and uncomplicated pediatric patients.

#### Nursing Care Hours per Patient Day (NCHPPD): April 2020 - March 2021

This graph shows the average number of direct nursing care hours provided per patient during a 24-hour period. Results are shown for care provided by registered nurses (RNs) and by all nursing staff (total) by month.

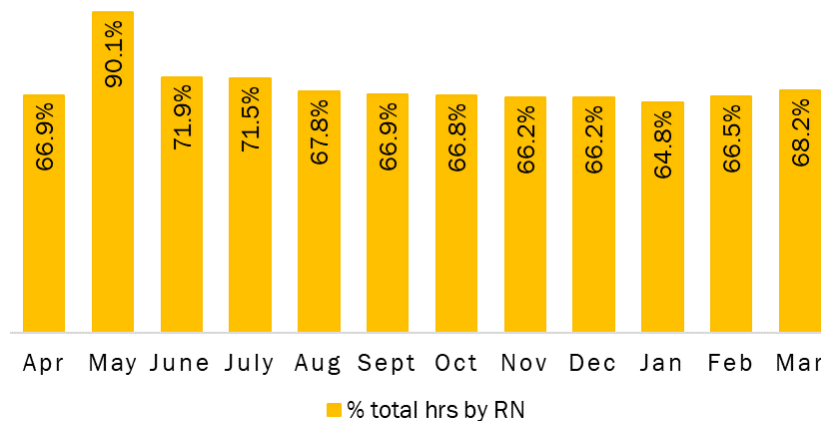
##### Acute Care Nursing Unit



#### Percent of Total Nursing Care Hours Provided by RNs: April 2020 - March 2021

This graph shows the percentage of total nursing hours provided by RNs each month. Average for this period is 66.4%.

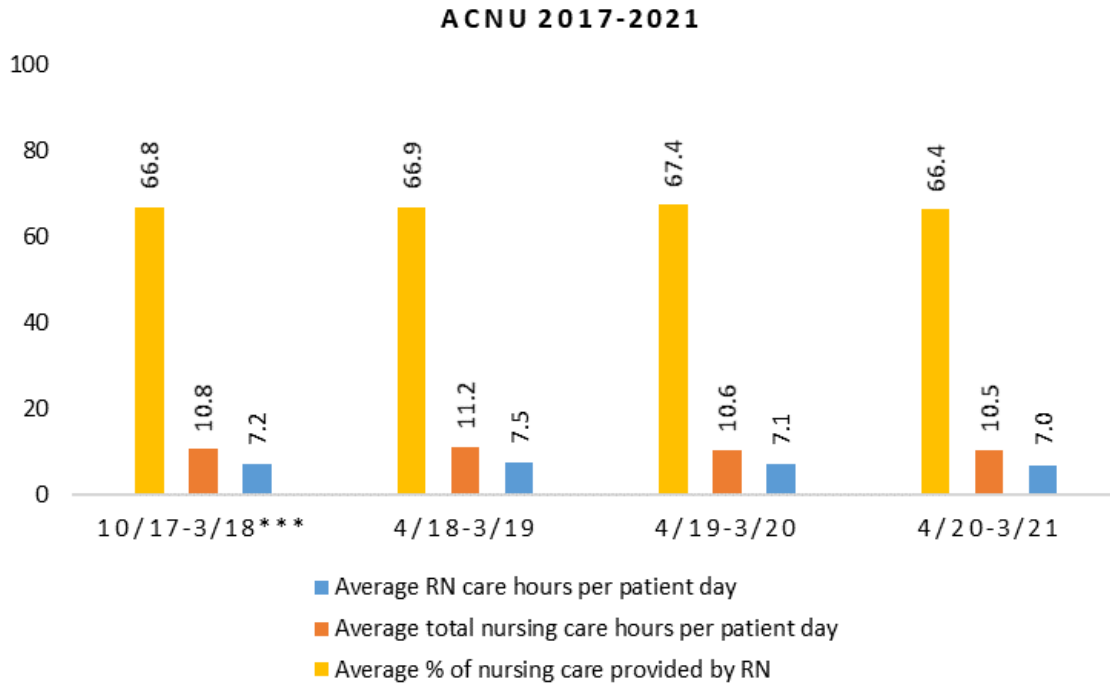
##### Acute Care Nursing Unit



## 2021 Nurse Staffing Data

### Yearly Average of RN and Total Nursing Care Hours per Patient Day, Percent of Total Nursing Care Hours Provided by RNs, 2017 – 2021

The graph below shows trend over time on the average RN and total nursing care hours per patient days, and average percentage of nursing care that was provided by RN.



\*\*\* Data collection started 10/2017.

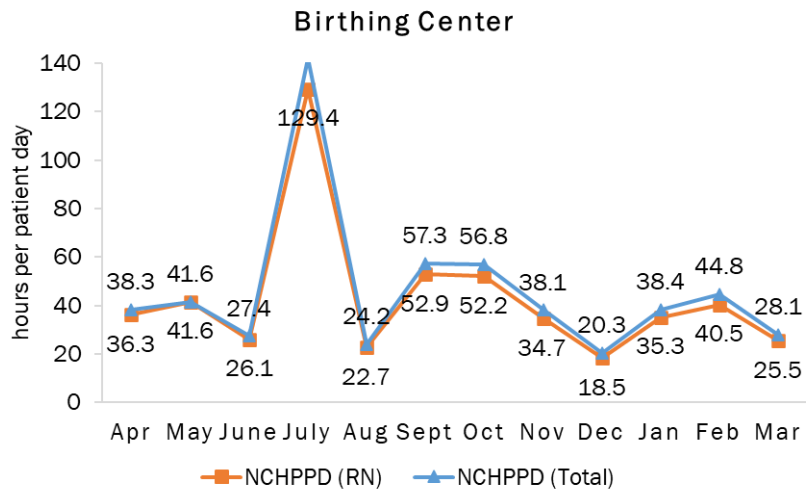
## 2021 Nurse Staffing Data

### Copley Hospital Birthing Center Unit

The Birthing Center Unit has 4 licensed beds for labor, delivery, recovery, and postpartum care. Providing care to low risk patients. Also providing lactation support and car seat fittings.

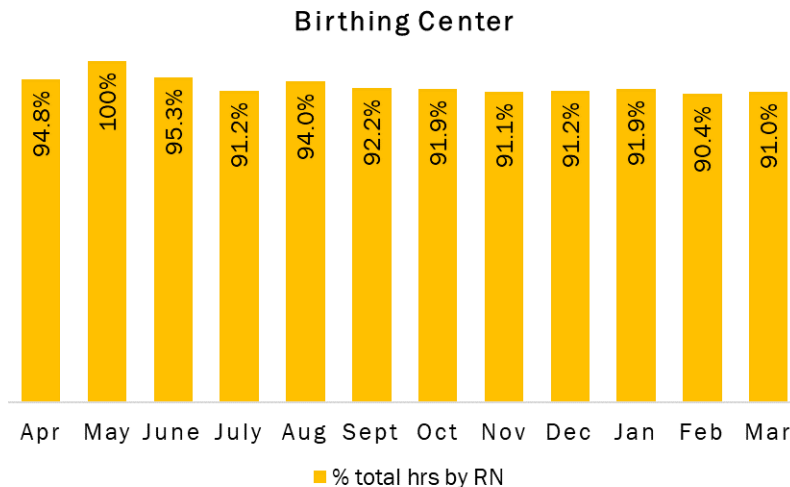
#### Nursing Care Hours per Patient Day (NCHPPD): April 2020 - March 2021

This graph shows the average number of direct nursing care hours provided per patient during a 24-hour period. Results are shown for care provided by registered nurses (RNs) and by all nursing staff (total) by month.



#### Percent of Total Nursing Care Hours Provided by RNs: April 2020 - March 2021

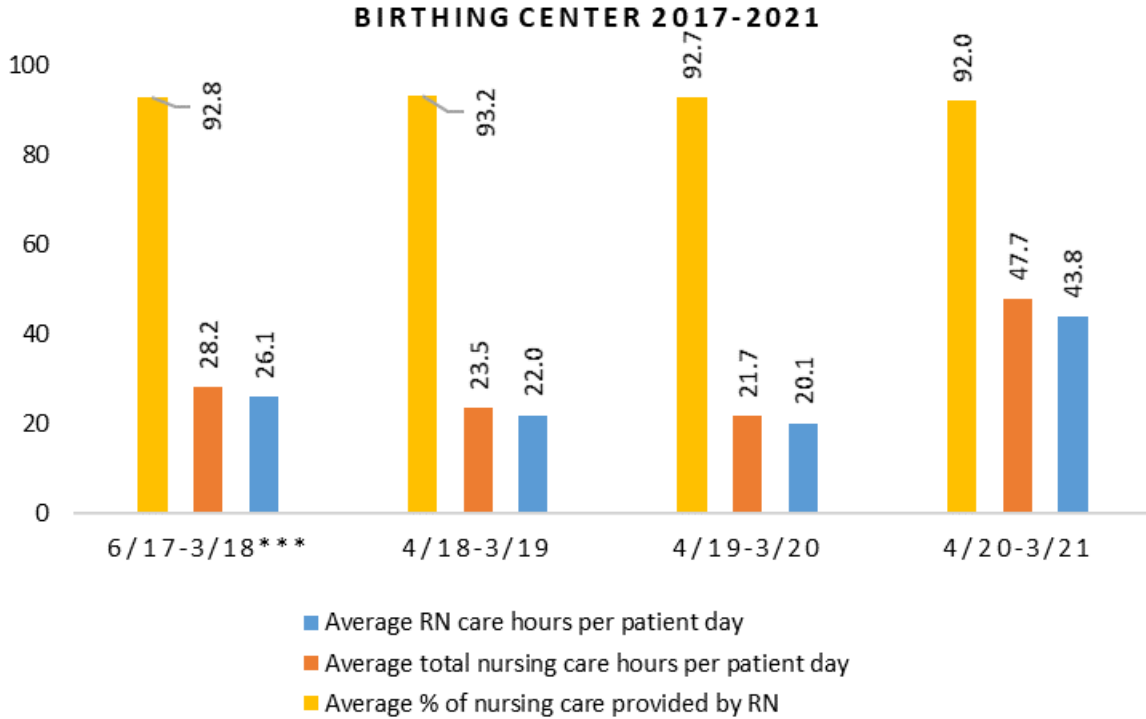
This graph shows the percentage of total nursing hours provided by RNs each month. Yearly average for this period is 92.0%.



## 2021 Nurse Staffing Data

### Yearly Average of RN and Total Nursing Care Hours per Patient Day, Percent of Total Nursing Care Hours Provided by RNs, 2017 - 2021

The graph below shows trend over time on the average RN and total nursing care hours per patient days, and average percentage of nursing care that was provided by RN.



\*\*\* Data collection started in June 2017.