



# 2008 Emergency Department Hospital Utilization Report

Prepared by

Vermont Department of Health

Vermont Department of Banking, Insurance,  
Securities and Health Care Administration



**2008**

**Vermont Emergency Department Hospital Utilization Report**

**June 2010**

**Department of Banking, Insurance, Securities  
and Health Care Administration**

**Department of Health**

This report was produced in cooperation with the Department of Health, Division of Health Surveillance

Joan Mongeon, Public Health Analyst III  
Peggy Brozicevic, Research and Statistics Chief

Under the direction of the Vermont Department of Banking, Insurance, Securities and Health Care Administration,  
Division of Health Care Administration

Dian Kahn, Director of Analysis and Data Management  
Lucas Herring, Health Policy Analyst

The Department of Health  
Division of Health Surveillance  
108 Cherry Street, PO Box 70  
Burlington, Vermont 05402-0070  
(802) 863-7300 or (800) 869-2871

The Division of Health Care Administration  
89 Main Street, Drawer 20  
Montpelier, Vermont 05620-3601  
(802) 828-2900 or (800) 631-7788  
[www.bishca.state.vt.us](http://www.bishca.state.vt.us)

## **Acknowledgments**

The production of this document would not be possible without the assistance of many individuals and the cooperation of the hospitals.

The Vermont Department of Banking, Insurance, Securities and Health Care Administration (BISHCA) thanks the Vermont Association of Hospitals and Health Systems - Network Services Organization (VAHHS-NSO) for providing assistance under a contract with the department and for working with the hospitals to ensure timely and accurate reporting of the data. BISHCA also thanks the participating hospitals for their efforts in submitting the data and responding to requests for clarification and corrections. In addition, BISHCA appreciates the sharing of data by the New Hampshire Department of Health and Human Services, the Massachusetts Division of Health Care Finance and Policy and the New York Department of Health. These organizations provide data about Vermont residents using New Hampshire, Massachusetts and New York hospitals.

## **Disclaimer**

Hospital discharge data for use in this publication were supplied by the VAHHS-NSO reporting system, Vermont EXPLOR, under a contract with BISHCA. These data were supplied upon the authorization of the hospitals through agreements between VAHHS-NSO and each participating hospital.

After receipt of the data files from VAHHS-NSO, the data undergo additional editing and processing by the Vermont Department of Health (VDH), under an agreement with BISHCA, before inclusion in the Vermont Uniform Hospital Discharge Data Set. The Vermont Uniform Hospital Discharge Data Set is used to construct this Hospital Utilization Report and is the official state data file, available to the public. The Health Department does not assume responsibility for errors in the data due to coding or processing by hospitals, VAHHS-NSO Vermont Explor, or other data providers.

## **Hospital Data Files and Reports**

Public use hospital discharge data files as well as this hospital utilization report and associated tables are available for download on the BISHCA website at: <http://www.bishca.state.vt.us/health-care/research-data-reports/research-data-reports> under “Hospitals”. Information on requesting research hospital discharge data sets is also provided on this website. For any additional information concerning the data sets contact the Vermont Division of Health Care Administration at (802) 828-2900 or (800) 631-7788. To obtain a hard copy of this report contact the Vermont Department of Health at (802) 863-7300 or (800) 869-2871.

## Table of Contents

User’s Guide to the Emergency Department Tables.....	6	Table E8a .....	32
Emergency Department Highlights.....	9	Clinical Classifications Software (CCS) High Level	
Table E1a .....	14	Diagnosis Groups by Vermont Hospitals, 2004-2008	
Clinical Classifications Software (CCS) High Level		Table E8b .....	34
Diagnosis Groups by Type of ED Visit, 2004-2008		Clinical Classifications Software (CCS) High Level	
Table E1b .....	16	Diagnosis Groups by Vermont Hospitals, 2008	
Clinical Classifications Software (CCS) High Level		Table E9 .....	36
Diagnosis Groups by Type of ED Visit, 2008		Primary Payer by Vermont Hospitals, 2008	
Table E2 .....	17	Table E10 .....	37
Clinical Classifications Software (CCS) High Level		Clinical Classifications Software (CCS) High Level	
and Leading Single-Level Diagnosis Groups by		Diagnosis Groups by VT, NH, MA and NY Hospitals, 2008	
Type of ED Visit, 2008		Table E11a .....	39
Table E3 .....	20	Patient Origin Report, ED Visits Not Admitted by Hospital	
Vermont Hospitals by Type of ED Visit, 208		Service , 2008	
Table E4 .....	21	Table E11b .....	40
Clinical Classifications Software (CCS) High Level		Patient Origin Report, ED Visits Not Admitted by Hospital Service	
Diagnosis Groups by Age, 2008		Area and Ziptown, 2008	
Table E5 .....	25	Table E12 .....	51
Clinical Classifications Software (CCS) High Level		Utilization by Hospital Service Area and Clinical Classification	
Diagnosis Groups by Sex and Age, 2008		Software (CCS) High Level Diagnosis Group, 2008	
Table E6 .....	29		
Clinical Classifications Software (CCS) High Level			
Diagnosis Groups by Primary Payer, 2008			
Table E7 .....	31		
Primary Payer by Age, 2008			

**Figures**

Figure E1 .....61  
Bar Chart: Percent of Visits by Admission Day of  
Week and Type of ED Visit, 2008

Figure E2 .....62  
Bar Chart: Percent of Visits by Admission Day of  
Week and Injury Versus Non-Injury Diagnosis, 2008

Figure E3 .....63  
Bar Chart: Percent of Visits by Admission Hour and  
Type of ED Visit, 2008

Figure E4 .....64  
Bar Chart: Percent of Visits by Admission Hour and  
Injury Versus Non-Injury Diagnosis, 2008

**Appendices**

Appendix E1: Definitions and Formulae .....65

Appendix E2: 2008 Clinical Classifications Software (CCS)  
High-Level and Single-Level Diagnosis  
Categories .....67

Appendix E3: Towns and Hospitals in Vermont  
Hospital Service Areas.....72

Appendix E4: Hospitals in this Report.....77

# User's Guide to the Emergency Department Tables

## Emergency Department Data Collection in Vermont

Collection of Vermont (VT) hospital emergency department (ED) data began in January 2001, under the authority of the Department of Banking, Insurance, Securities and Health Care Administration (BISHCA). Like the inpatient and outpatient procedure files, the ED data are collected by the Vermont Association of Hospitals and Health Systems - Network Services Organization (VAHHS-NSO) and managed by the Vermont Department of Health (VDH).

To improve our understanding of utilization patterns in the health care system, ED data were selected as the next logical subset of outpatient data to be collected. ED usage is particularly of interest in a rural state that may have limited sites and hours available for provision of primary and urgent care in some areas. ED data also provide essential information for injury control studies since this is often the setting in which accidental and intentional injuries are evaluated and treated.

## Definitions

### *Changes in Definition of Emergency Department Data*

In data years 2001 and 2002, ED data analyses included all records coded as emergency room visits by hospitals (patient type "E") as well as inpatient records (patient type "I") that were coded as having an ED admission source. These inpatient records that originated in the ED were included in the inpatient Reports as well as the ED tables.

Beginning with data year 2003, two changes were made to the way in which records were selected for inclusion in ED data analyses. ED data selection was expanded to include all patient type records which had an associated revenue code between 450-459 (Emergency Room). At the same time, the number of ED data records chosen for

analysis was reduced since more than 12,000 patient type "E" records were found in 2003 to have no associated ER revenue charge. Many of these records turned out to be for clinics that were held after hours in hospital EDs.

### *Comparison to Previous Monographs*

Because of the change in record selection rules described above, the ED tables presented in this report cannot meaningfully be compared to the tables published in the 2001 and 2002 Monographs.

## Sources of Data

All fourteen of Vermont's civilian acute care hospitals participate in the ED reporting system. The Veterans Administration hospital in White River Junction does not participate in ED data collection. Collection procedures are the same as those for inpatient and outpatient data, with Vermont hospitals providing data to the VAHHS-NSO EXPLOR system, the source of the data that is finally provided to VDH, the data management designee of BISHCA.

Beginning with reporting year 2001, ED data for Vermont residents using New Hampshire (NH) hospitals have been received from the New Hampshire Department of Health and Human Services. Beginning with reporting year 2005, data for Vermont residents using Massachusetts (MA) hospitals have been received from the Massachusetts Division of Health Care Finance and Policy. Starting with data year 2006 ED data for Vermont residents using New York (NY) hospitals have been received from the New York Health Department.

## Clinical Classifications Software (CCS) Grouper

Clinical Classifications Software (CCS) is a tool that collapses principal diagnosis (over 12,000) and procedure (over 3,500) codes into meaningful categories. The single-level diagnosis CCS aggregates illnesses and conditions into more than 260 mutually exclusive categories. Similarly, the single-level procedure CCS aggregates procedures into 231 mutually exclusive categories, most representing single types of procedures. High-level CCS groups further collapse single-level CCS groups into broad categories based on body systems or condition. The CCS diagnosis grouper is used in the ED tables to categorize principal diagnosis. ED visits that do not have a principal diagnosis are excluded from this report.

CCS was developed at the Agency for Healthcare Research and Quality (AHRQ) and is available to the public at the website: <http://www.hcup-us.ahrq.gov/toolssoftware/ccs/ccs.jsp>

## Hospital vs. Hospital Service Area Data

In the tables that follow, ED data are reported by hospital, and hospital service area. Beginning with 2006 data, Emergency department data from the neighboring states of New Hampshire, New York and Massachusetts, allow for the calculation of population based analysis by HSA. See page 8 for maps of Vermont towns and HSAs.

## Emergency Department (ED) Reporting

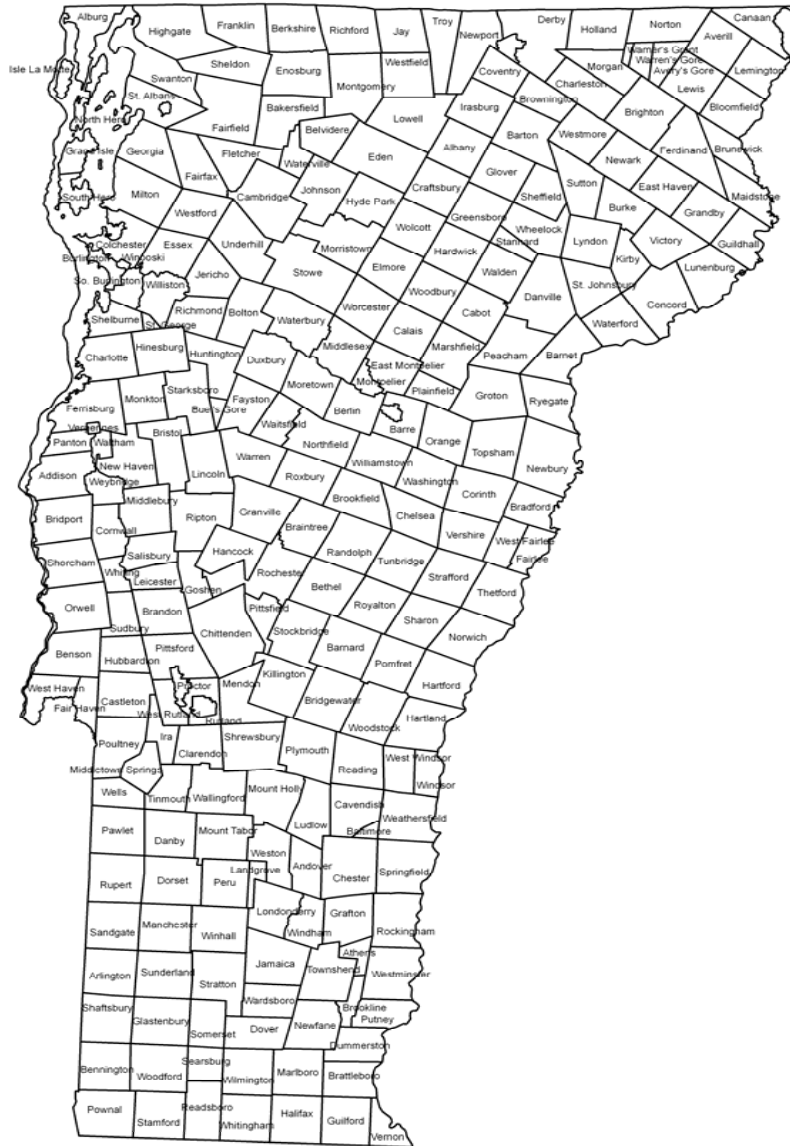
ED visits are reported in several ways in the ED tables. Visits are presented in terms of Vermont or Vermont plus NH, MA and NY hospitals, admission or non-admission to the inpatient setting, and all visits versus visits by Vermont residents only.

The following table presents an overview of the number of records and how ED visits were selected in each of the ED tables and figures.

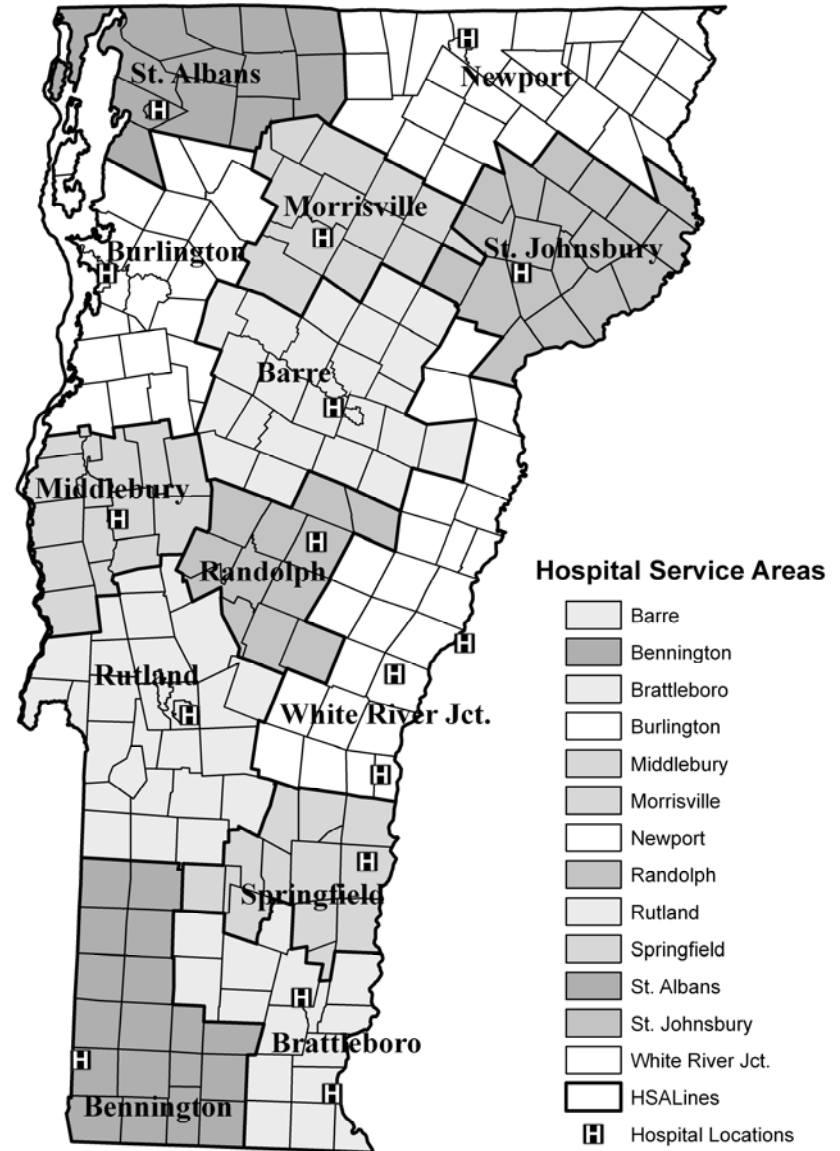
		Tables E1-E9, Figures E1-E4	Tables E10	Tables E11-E12
	<b>Total ED Visits</b>	263,739	265,303	240,749
<b>Hospitals</b>	<b>VT Hospitals</b>	X	X	X
	<b>NH Hospitals</b>		X	X
	<b>MA Hospitals</b>		X	X
	<b>NY Hospitals</b>		X	X
<b>Type of ED Visits</b>	<b>Not Admitted</b>	X	X	X
	<b>Inpatient Admission</b>	X	X	
<b>Type of Residents</b>	<b>VT Residents</b>	X	X	X
	<b>Non-Residents</b>	X		



## Vermont Towns



## Vermont Hospital Service Areas and Hospitals



---

## Emergency Department Highlights

---

- **In 2008 there were a total of 263,739 Emergency Department visits to Vermont hospitals**, not including the VA hospital, encompassing both Vermont residents and non-residents. 90.8% or 239,589 of these Emergency Department visits were not admitted while the remaining 9.2% or 24,150 of Emergency Department visits were admitted and categorized as inpatient discharges. (Table E1a)
- **New Hampshire reported 24,403 Vermont resident Emergency Department visits in New Hampshire hospitals** while Massachusetts reported 2,323 and New York reported 1,399 in 2008. New Hampshire and New York saw a slight increase in Vermont resident Emergency room visits from those in 2007 -- 23,594 and 1,306 visits respectively -- while Massachusetts saw a slight decrease from 2,352. (Table E10)
- **The age-adjusted visits per 1000 population ranges from 275.0 in the Burlington Hospital Service Area to 539.4 in the St. Albans Hospital Service Area.** A map of Hospital Service Areas can be found on page 8. (Table E12)
- **Saturday and Sunday continue to have the greatest number of Emergency Department visits that did not result in an inpatient stay.** A lack of availability to primary care physicians may be a cause of the increased emergency room visits on weekends. Monday continues to have the highest percent of Emergency Department visits that resulted in inpatient admissions.
- **Emergency Department visits between 6 am and 2 pm are less likely to result in an admission than any other time of the day.** This may be indicative of relatively higher acuity or other factors making it difficult to release patients during the overnight time period. The greatest numbers of Emergency Department visits occur between 2 pm and 10 pm. This is similar to findings in 2007. (Figure E3)

For information on utilization of inpatient and outpatient hospital services, see the “**Vermont Hospital Utilization Reports**” at: <http://www.bishca.state.vt.us/health-care/research-data-reports/vermont-hospital-utilization-reports-vhur> .

---

## Emergency Department Highlights

---

### Patient Characteristics: Variations by Age and Sex

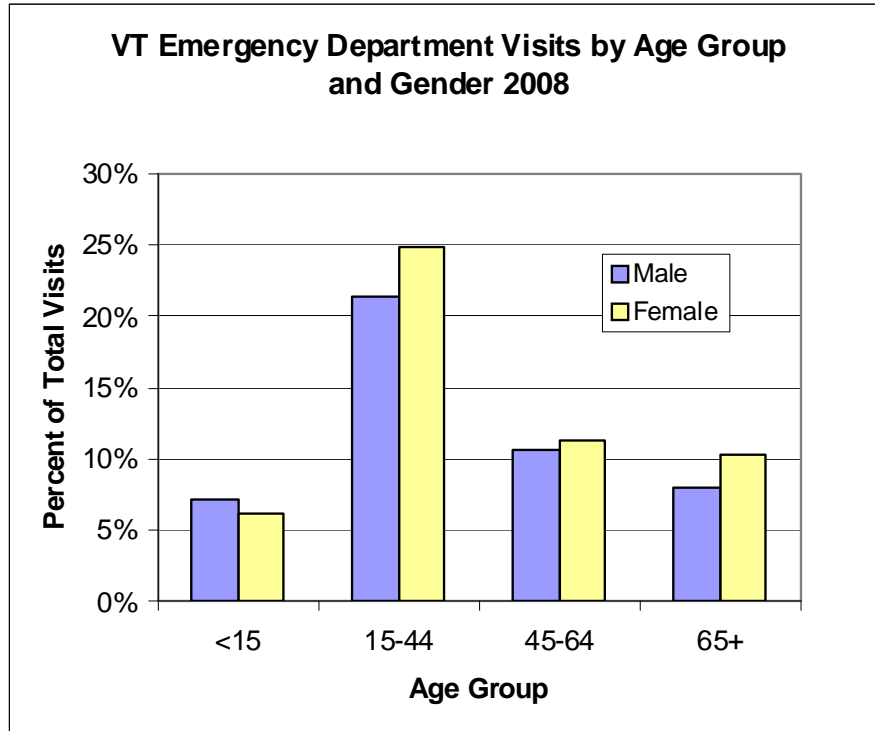


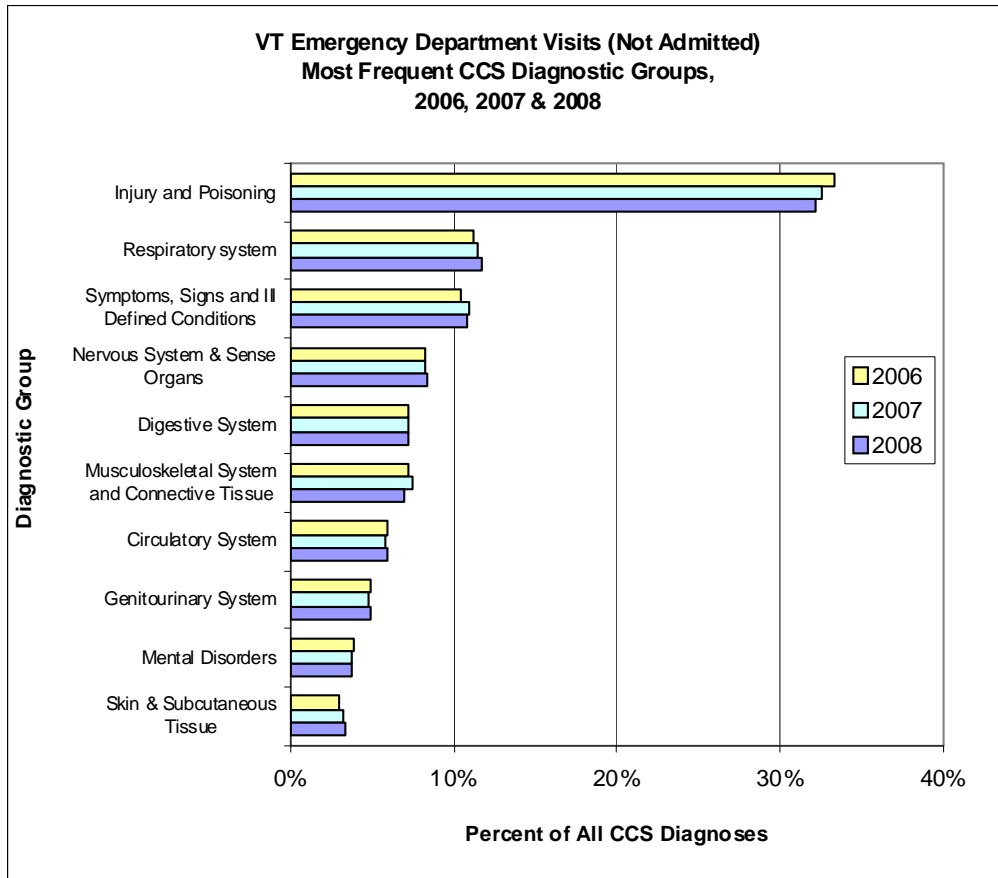
Figure 1

Data Source: 2008 VT Uniform Hospital Discharge Data Set, Table E5

- The 15-44 year old age group accounted for 46.2% or 121,827 of all Emergency Department visits.
- Females comprised 52.7% or 139,110 of all Emergency Department visits in 2008.
- Females had a higher number of Emergency Department visits than males in all age groups except for the < 15 age group, which has been the trend for several years.

# Emergency Department Highlights

## Emergency Department Visits in Vermont Hospitals: Top 10 CCS Diagnostic Groups



**Figure 2**

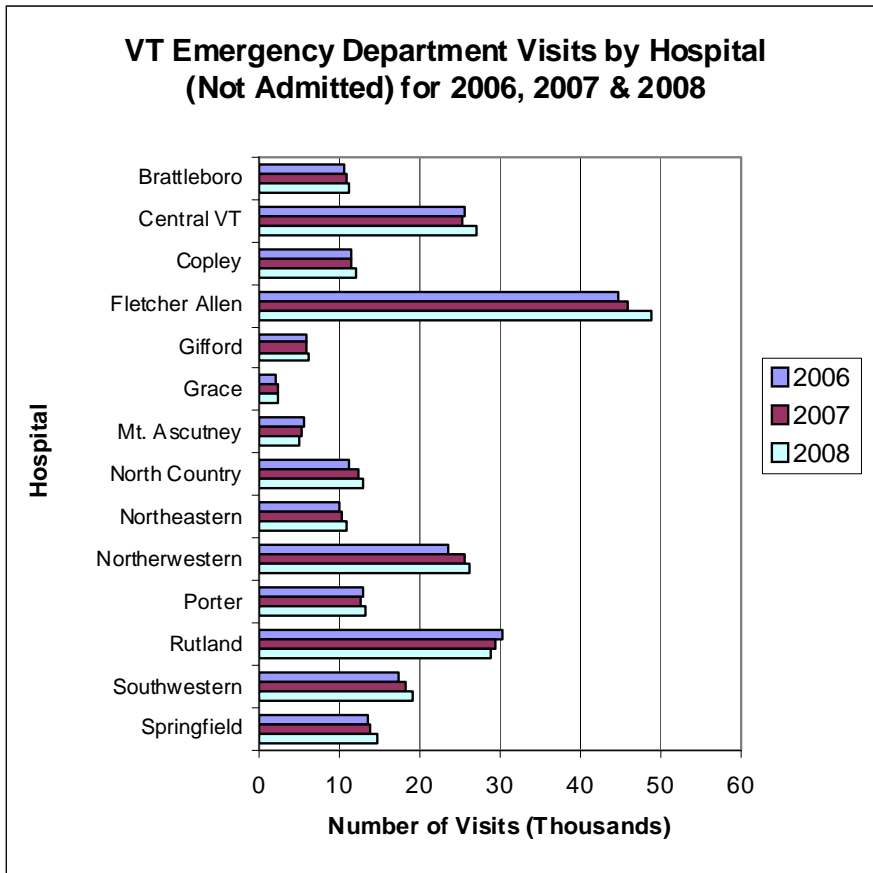
Data Source: 2006, 2007 & 2008 VT Uniform Hospital Discharge Data Sets, Table E1b

CCS (Clinical Classification Software) collapses principal diagnosis (over 12,000) and procedure codes (over 3,500) into meaningful and mutually exclusive categories (260).

- **Injury and Poisoning** accounted for the most Emergency Department visits (not admitted) in 2008, at about 32.2%.
- Out of the Top 10 CCS diagnostic groups, the percentage of visits decreased for **Injury and Poisoning, Symptoms, Signs & Ill-Defined Conditions, & Musculoskeletal System & Connective Tissue** from 2007 to 2008.
- Out of the Top 10 CCS diagnostic groups, only **Musculoskeletal System & Connective Tissue**, had a decrease in number of visits from 2007 to 2008.
- **The only change of rank in the Top 10 CCS diagnostic groups** was Digestive Systems passing Musculoskeletal System and Connective Tissue in Emergency Department visits between 2007 and 2008. These two CCS groups have been alternating rankings over the past couple of years due to a similar numbers of visits.

# Emergency Department Highlights

## Hospital Trends: Emergency Department Visits by Hospital



- **Fletcher Allen** continues to have the most visits to the Emergency Department without admission at 48,872 visits in 2008.
- **The percent of Emergency Department visits that were not admitted in 2008** ranged from 85.0% at Southwestern Vermont Medical Center to 99.8% at Grace Cottage.
- **Most Vermont Hospitals saw an increase in Emergency Department visits between 2006 and 2008.** Only Mt. Ascutney and Rutland had decreases.

Figure 3

Data Source: 2006, 2007 and 2008 VT Uniform Hospital Discharge Data Sets, Table E3

## Emergency Department Highlights

### VT Emergency Department Visits Top 3 CCS Diagnosis Groups by Age, 2008

CCS Diagnosis Group	Number	Col%	CCS Diagnosis Group	Number	Col%	CCS Diagnosis Group	Number	Col%
Age < 5			Age 5-14			Age 15-24		
Injury and Poisoning	4,407	28.6	Injury and Poisoning	10,364	51.5	Injury and Poisoning	17,930	36.4
Respiratory System	3,515	22.8	Respiratory System	2,529	12.6	Symptoms, Signs and Ill Defined Conditions	5,612	11.4
Symptoms, Signs and Ill Defined Conditions	2,504	16.3	Symptoms, Signs and Ill Defined Conditions	2,152	10.7	Respiratory System	5,125	10.4
Other	4,982	32.3	Other	5,066	25.2	Other	20,535	41.7
All Cases	15,408	100.0	All Cases	20,111	100.0	All Cases	49,202	100.0
CCS Diagnosis Group	Number	Col%	CCS Diagnosis Group	Number	Col%	CCS Diagnosis Group	Number	Col%
Age 25-44			Age 45-64			Age 65-74		
Injury and Poisoning	21,968	30.2	Injury and Poisoning	15,787	27.2	Injury and Poisoning	3,904	20.9
Symptoms, Signs and Ill Defined Conditions	7,132	9.8	Circulatory System	6,580	11.3	Circulatory System	3,230	17.3
Respiratory Systems	7,054	9.7	Respiratory System	6,399	11.0	Respiratory System	2,829	15.1
Other	36,472	50.2	Other	29,275	50.4	Other	8,737	46.7
All Cases	72,626	100.0	All Cases	58,041	100.0	All Cases	18,700	100.0
CCS Diagnosis Group	Number	Col%	CCS Diagnosis Group		Number	Col%		
Age 75+			All Ages					
Injury and Poisoning	6,165	20.8	Injury and Poisoning	80,525	30.5			
Circulatory System	5,477	18.5	Respiratory System	32,003	12.1			
Respiratory System	4,552	15.4	Symptoms, Signs and Ill Defined Conditions	26,584	10.1			
Other	13,457	45.4	Other	124,627	47.3			
All Cases	29,651	100.0	All Cases	263,739	100.0			

**Figure 4**

Data Source: 2008 VT Uniform Hospital Discharge Data Set, Table E4

**Table E1a**  
**Clinical Classification Software (CCS) High Level Diagnosis Groups by Type of ED Visit and Data Year**  
**2004-2008 VT Hospital Data, Includes VT Residents and Non-Residents**  
**Number of Visits**

Inpatient Discharges Originating in ED

CCS_GROUP	2004	2005	2006	2007	2008
Infectious & parasitic diseases	516	541	507	530	561
Neoplasms	607	565	586	606	542
Endocrine, nutritional, metabolic & immunity disorders	913	883	855	963	1,019
Diseases of the blood & blood-forming organs	215	233	225	230	299
Mental disorders	1,673	1,457	1,386	1,543	1,630
Diseases of the nervous system & sense organs	628	572	596	671	705
Diseases of the circulatory system	5,570	5,251	5,110	5,140	5,074
Diseases of the respiratory system	3,795	3,881	3,488	3,764	3,917
Diseases of the digestive system	3,827	3,569	3,571	3,827	3,738
Diseases of the genitourinary system	1,022	978	1,018	1,130	1,143
Contraception & complications of pregnancy & childbirth	138	141	123	112	157
Diseases of the skin & subcutaneous tissue	458	505	526	566	647
Musculoskeletal system & connective tissue	528	523	518	555	556
Congenital anomalies	40	39	23	33	39
Conditions originating in the perinatal period	1	0	0	0	1
Injury & poisoning	3,488	3,485	3,382	3,389	3,365
Symptoms, signs & ill-defined conditions	696	617	638	682	665
Residual codes, unclassified, all Ecodes	42	48	39	84	92
Total	24,157	23,288	22,591	23,825	24,150

Emergency Dept. (ED) Visits, Not Admitted

CCS_GROUP	2004	2005	2006	2007	2008
Infectious & parasitic diseases	2,890	3,379	3,539	3,209	3,511
Neoplasms	430	327	411	336	304
Endocrine, nutritional, metabolic & immunity disorders	2,232	2,402	2,478	2,481	2,775
Diseases of the blood & blood-forming organs	263	262	329	326	350
Mental disorders	7,148	7,953	8,702	8,546	9,036
Diseases of the nervous system & sense organs	16,269	17,837	18,692	19,176	20,161
Diseases of the circulatory system	11,746	12,970	13,414	13,344	14,366
Diseases of the respiratory system	21,352	25,038	25,380	26,572	28,086
Diseases of the digestive system	13,380	14,948	16,334	16,537	17,198
Diseases of the genitourinary system	9,357	10,079	11,166	11,093	11,818
Contraception & complications of pregnancy & childbirth	1,754	1,739	1,828	1,749	2,016
Diseases of the skin & subcutaneous tissue	5,006	5,773	6,711	7,525	8,086
Musculoskeletal system & connective tissue	12,451	14,008	16,196	17,360	16,679
Congenital anomalies	59	63	40	57	66
Conditions originating in the perinatal period	173	173	164	221	234
Injury & poisoning	72,602	76,297	75,390	75,230	77,160
Symptoms, signs & ill-defined conditions	20,664	21,959	23,712	25,312	25,919
Residual codes, unclassified, all Ecodes	1,259	1,422	1,518	1,690	1,824
Total	199,035	216,629	226,004	230,764	239,589

**Table E1a**  
**Clinical Classification Software (CCS) High Level Diagnosis Groups by Type of ED Visit and Data Year**  
**2004-2008 VT Hospital Data, Includes VT Residents and Non-Residents**  
**Number of Visits**

All ED Visits, Including Those Admitted

CCS_GROUP	2004	2005	2006	2007	2008
Infectious & parasitic diseases	3,406	3,920	4,046	3,739	4,072
Neoplasms	1,037	892	997	942	846
Endocrine, nutritional, metabolic & immunity disorders	3,145	3,285	3,333	3,444	3,794
Diseases of the blood & blood-forming organs	478	495	554	556	649
Mental disorders	8,821	9,410	10,088	10,089	10,666
Diseases of the nervous system & sense organs	16,897	18,409	19,288	19,847	20,866
Diseases of the circulatory system	17,316	18,221	18,524	18,484	19,440
Diseases of the respiratory system	25,147	28,919	28,868	30,336	32,003
Diseases of the digestive system	17,207	18,517	19,905	20,364	20,936
Diseases of the genitourinary system	10,379	11,057	12,184	12,223	12,961
Contraception & complications of pregnancy & childbirth	1,892	1,880	1,951	1,861	2,173
Diseases of the skin & subcutaneous tissue	5,464	6,278	7,237	8,091	8,733
Musculoskeletal system & connective tissue	12,979	14,531	16,714	17,915	17,235
Congenital anomalies	99	102	63	90	105
Conditions originating in the perinatal period	174	173	164	221	235
Injury & poisoning	76,090	79,782	78,772	78,619	80,525
Symptoms, signs & ill-defined conditions	21,360	22,576	24,350	25,994	26,584
Residual codes, unclassified, all Ecodes	1,301	1,470	1,557	1,774	1,916
Total	223,192	239,917	248,595	254,589	263,739

Emergency department visits include all hospital records (outpatient and inpatient) which originated in the ED.

Inpatient discharges originating in the Emergency Department are reported here as well as in the hospital inpatient utilization report.

Inpatient discharges exclude newborns (MDC 15). ED records with missing or invalid diagnosis codes are excluded from this analysis.



**Table E1b**  
**Clinical Classifications Software (CCS) High Level Diagnosis Groups by Type of ED Visit**  
**2008 VT Hospital Data, Includes VT Residents and Non-Residents**  
**Number of Visits and Row Percents**

Diagnosis Group	Emergency Dept. (ED) Visits, Not Admitted		Inpatient Discharges Originating in ED		All ED Visits, Including Those Admitted	
	Number	Row %	Number	Row %	Number	Row %
Injury & poisoning	77,160	95.8	3,365	4.2	80,525	100.0
Diseases of the respiratory system	28,086	87.8	3,917	12.2	32,003	100.0
Symptoms, signs & ill-defined conditions	25,919	97.5	665	2.5	26,584	100.0
Diseases of the digestive system	17,198	82.1	3,738	17.9	20,936	100.0
Diseases of the nervous system & sense organs	20,161	96.6	705	3.4	20,866	100.0
Diseases of the circulatory system	14,366	73.9	5,074	26.1	19,440	100.0
Musculoskeletal system & connective tissue	16,679	96.8	556	3.2	17,235	100.0
Diseases of the genitourinary system	11,818	91.2	1,143	8.8	12,961	100.0
Mental disorders	9,036	84.7	1,630	15.3	10,666	100.0
Diseases of the skin & subcutaneous tissue	8,086	92.6	647	7.4	8,733	100.0
Infectious & parasitic diseases	3,511	86.2	561	13.8	4,072	100.0
Endocrine, nutritional, metabolic & immunity disorders	2,775	73.1	1,019	26.9	3,794	100.0
Contraception & complications of pregnancy & childbirth	2,016	92.8	157	7.2	2,173	100.0
Residual codes, unclassified, all Ecodes	1,824	95.2	92	4.8	1,916	100.0
Neoplasms	304	35.9	542	64.1	846	100.0
Diseases of the blood & blood-forming organs	350	53.9	299	46.1	649	100.0
Conditions originating in the perinatal period	234	99.6	1	0.4	235	100.0
Congenital anomalies	66	62.9	39	37.1	105	100.0
Total	239,589	90.8	24,150	9.2	263,739	100.0

Emergency department visits include all hospital records (outpatient and inpatient) which originated in the ED.

Inpatient discharges originating in the Emergency Department (24,150 in 2008) are reported here as well as in the hospital inpatient utilization report.

Inpatient discharges exclude newborns (MDC 15). 20 ED records with missing or invalid diagnosis codes are excluded from this analysis.

**Table E2**  
**Clinical Classifications Software (CCS) High Level and Leading Single-Level Diagnosis Groups by Type of ED Visit**  
**2008 VT Hospital Data, Includes VT Residents and Non-Residents**  
**Number of Visits and Row Percents**

Diagnosis Group	Emergency Dept. (ED) Visits, Not Admitted		Inpatient Discharges Originating in ED		All ED Visits, Including Those Admitted	
	Number	Row %	Number	Row %	Number	Row %
<b>Injury and poisoning</b>	<b>77,160</b>	<b>95.8</b>	<b>3,365</b>	<b>4.2</b>	<b>80,525</b>	<b>100.0</b>
232 Sprains & strains	17,760	99.9	26	0.1	17,786	100.0
239 Superficial injury, contusion	16,182	99.8	39	0.2	16,221	100.0
236 Open wounds of extremities	10,058	99.6	43	0.4	10,101	100.0
244 Other injuries & conditions due to external causes	8,802	99.2	69	0.8	8,871	100.0
All other subgroups within this CCS category	24,358	88.4	3,188	11.6	27,546	100.0
<b>Diseases of the respiratory system</b>	<b>28,086</b>	<b>87.8</b>	<b>3,917</b>	<b>12.2</b>	<b>32,003</b>	<b>100.0</b>
126 Other upper respiratory infections	9,316	99.4	60	0.6	9,376	100.0
133 Other lower respiratory disease	4,851	97.3	134	2.7	4,985	100.0
122 Pneumonia (except TB or STD related)	2,722	60.9	1,747	39.1	4,469	100.0
127 Chronic obstructive pulmonary disease & bronchiectasis	3,264	79.6	834	20.4	4,098	100.0
All other subgroups within this CCS category	7,933	87.4	1,142	12.6	9,075	100.0
<b>Symptoms, signs and ill-defined conditions</b>	<b>25,919</b>	<b>97.5</b>	<b>665</b>	<b>2.5</b>	<b>26,584</b>	<b>100.0</b>
251 Abdominal pain	10,966	98.2	205	1.8	11,171	100.0
250 Nausea and vomiting	3,415	97.7	80	2.3	3,495	100.0
253 Allergic reactions	2,831	99.2	22	0.8	2,853	100.0
All other subgroups within this CCS category	8,707	96.1	358	3.9	9,065	100.0
<b>Diseases of the digestive system</b>	<b>17,198</b>	<b>82.1</b>	<b>3,738</b>	<b>17.9</b>	<b>20,936</b>	<b>100.0</b>
136 Disorders of teeth and jaw	6,803	99.8	14	0.2	6,817	100.0
155 Other gastrointestinal disorders	2,445	93.9	160	6.1	2,605	100.0
All other subgroups within this CCS category	7,950	69.0	3,564	31.0	11,514	100.0
<b>Diseases of the nervous system and sense organs</b>	<b>20,161</b>	<b>96.6</b>	<b>705</b>	<b>3.4</b>	<b>20,866</b>	<b>100.0</b>
84 Headache, including migraine	5,420	99.1	51	0.9	5,471	100.0
92 Otitis media and related conditions	3,301	99.7	9	0.3	3,310	100.0
95 Other nervous system disorders	2,814	94.0	180	6.0	2,994	100.0
93 Conditions associated with dizziness or vertigo	2,327	97.5	59	2.5	2,386	100.0
All other subgroups within this CCS category	6,299	93.9	406	6.1	6,705	100.0
<b>Diseases of the circulatory system</b>	<b>14,366</b>	<b>73.9</b>	<b>5,074</b>	<b>26.1</b>	<b>19,440</b>	<b>100.0</b>
102 Nonspecific chest pain	7,226	93.5	501	6.5	7,727	100.0
106 Cardiac dysrhythmias	2,455	74.6	836	25.4	3,291	100.0
All other subgroups within this CCS category	4,685	55.6	3,737	44.4	8,422	100.0

**Table E2**  
**Clinical Classifications Software (CCS) High Level and Leading Single-Level Diagnosis Groups by Type of ED Visit**  
**2008 VT Hospital Data, Includes VT Residents and Non-Residents**  
**Number of Visits and Row Percents**

<b>Diagnosis Group</b>	<b>Emergency Dept. (ED) Visits, Not Admitted</b>		<b>Inpatient Discharges Originating in ED</b>		<b>All ED Visits, Including Those Admitted</b>	
	<b>Number</b>	<b>Row %</b>	<b>Number</b>	<b>Row %</b>	<b>Number</b>	<b>Row %</b>
<b>Musculoskeletal system and connective tissue</b>	<b>16,679</b>	<b>96.8</b>	<b>556</b>	<b>3.2</b>	<b>17,235</b>	<b>100.0</b>
205 Spondylosis, intervertebral disc disorders, other back problems	7,415	97.3	208	2.7	7,623	100.0
211 Other connective tissue disease	4,704	97.5	120	2.5	4,824	100.0
204 Other non-traumatic joint disorders	3,938	99.4	22	0.6	3,960	100.0
All other subgroups within this CCS category	622	75.1	206	24.9	828	100.0
<b>Diseases of the genitourinary system</b>	<b>11,818</b>	<b>91.2</b>	<b>1,143</b>	<b>8.8</b>	<b>12,961</b>	<b>100.0</b>
159 Urinary tract infections	4,529	88.7	575	11.3	5,104	100.0
160 Calculus of urinary tract	2,312	94.7	129	5.3	2,441	100.0
163 Genitourinary symptoms and ill-defined conditions	1,502	99.1	14	0.9	1,516	100.0
All other subgroups within this CCS category	3,475	89.1	425	10.9	3,900	100.0
<b>Mental disorders</b>	<b>9,036</b>	<b>84.7</b>	<b>1,630</b>	<b>15.3</b>	<b>10,666</b>	<b>100.0</b>
657 MHSA: Mood disorders	2,257	78.0	635	22.0	2,892	100.0
660 MHSA: Alcohol related disorders	1,921	87.6	273	12.4	2,194	100.0
651 MHSA: Anxiety disorders	2,087	95.8	92	4.2	2,179	100.0
All other subgroups within this CCS category	2,771	81.5	630	18.5	3,401	100.0
<b>Diseases of the skin and subcutaneous tissue</b>	<b>8,086</b>	<b>92.6</b>	<b>647</b>	<b>7.4</b>	<b>8,733</b>	<b>100.0</b>
197 Skin and subcutaneous tissue infections	5,901	90.9	589	9.1	6,490	100.0
200 Other skin disorders	1,791	99.6	7	0.4	1,798	100.0
All other subgroups within this CCS category	394	88.5	51	11.5	445	100.0
<b>Infectious and parasitic diseases</b>	<b>3,511</b>	<b>86.2</b>	<b>561</b>	<b>13.8</b>	<b>4,072</b>	<b>100.0</b>
7 Viral infection	2,433	97.4	66	2.6	2,499	100.0
2 Septicemia (except in labor)	62	13.0	414	87.0	476	100.0
All other subgroups within this CCS category	1,016	92.6	81	7.4	1,097	100.0
<b>Endocrine, nutritional, metabolic and immunity disorders</b>	<b>2,775</b>	<b>73.1</b>	<b>1,019</b>	<b>26.9</b>	<b>3,794</b>	<b>100.0</b>
55 Fluid and electrolyte disorders	1,252	75.4	409	24.6	1,661	100.0
50 Diabetes mellitus with complications	625	59.8	420	40.2	1,045	100.0
All other subgroups within this CCS category	898	82.5	190	17.5	1,088	100.0

**Table E2**  
**Clinical Classifications Software (CCS) High Level and Leading Single-Level Diagnosis Groups by Type of ED Visit**  
**2008 VT Hospital Data, Includes VT Residents and Non-Residents**  
**Number of Visits and Row Percents**

<b>Diagnosis Group</b>	<b>Emergency Dept. (ED) Visits, Not Admitted</b>		<b>Inpatient Discharges Originating in ED</b>		<b>All ED Visits, Including Those Admitted</b>	
	<b>Number</b>	<b>Row %</b>	<b>Number</b>	<b>Row %</b>	<b>Number</b>	<b>Row %</b>
<b>Contraception and complications of pregnancy and childbirth</b>	<b>2,016</b>	<b>92.8</b>	<b>157</b>	<b>7.2</b>	<b>2,173</b>	<b>100.0</b>
181 Other complications of pregnancy	1,227	95.3	61	4.7	1,288	100.0
182 Hemorrhage during pregnancy, abruptio placenta, placenta previa	329	98.8	4	1.2	333	100.0
All other subgroups within this CCS category	460	83.3	92	16.7	552	100.0
<b>Residual codes, unclassified, all Ecodes</b>	<b>1,824</b>	<b>95.2</b>	<b>92</b>	<b>4.8</b>	<b>1,916</b>	<b>100.0</b>
259 Residual codes, unclassified	1,824	95.2	92	4.8	1,916	100.0
<b>Neoplasms</b>	<b>304</b>	<b>35.9</b>	<b>542</b>	<b>64.1</b>	<b>846</b>	<b>100.0</b>
42 Secondary malignancies	23	13.0	154	87.0	177	100.0
19 Cancer of bronchus, lung	53	39.0	83	61.0	136	100.0
All other subgroups within this CCS category	228	42.8	305	57.2	533	100.0
<b>Diseases of the blood and blood-forming organs</b>	<b>350</b>	<b>53.9</b>	<b>299</b>	<b>46.1</b>	<b>649</b>	<b>100.0</b>
59 Deficiency and other anemia	211	60.1	140	39.9	351	100.0
63 Diseases of white blood cells	45	34.1	87	65.9	132	100.0
62 Coagulation and hemorrhagic disorders	77	72.0	30	28.0	107	100.0
All other subgroups within this CCS category	17	28.8	42	71.2	59	100.0
<b>Conditions originating in the perinatal period</b>	<b>234</b>	<b>99.6</b>	<b>1</b>	<b>0.4</b>	<b>235</b>	<b>100.0</b>
224 Other perinatal conditions	220	99.5	1	0.5	221	100.0
All other subgroups within this CCS category	14	100.0	--	--	14	100.0
<b>Congenital anomalies</b>	<b>66</b>	<b>62.9</b>	<b>39</b>	<b>37.1</b>	<b>105</b>	<b>100.0</b>
<b>Total</b>	<b>239,589</b>	<b>90.8</b>	<b>24,150</b>	<b>9.2</b>	<b>263,739</b>	<b>100.0</b>

Emergency department visits include all hospital records (outpatient and inpatient) which originated in the ED.

Inpatient discharges originating in the Emergency Department (24,150 in 2008) are reported here as well as in the hospital inpatient utilization report.

Inpatient discharges exclude newborns (MDC 15). 20 ED records with missing or invalid diagnosis codes are excluded from this analysis.

**Table E3**  
**Vermont Hospitals by Type of ED Visit**  
**2008 VT Hospital Data, Includes VT Residents and Non-Residents**  
**Number of Visits and Row Percents**

Vermont Hospital	Emergency Dept. (ED) Visits, Not Admitted		Inpatient Discharges Originating in ED		All ED Visits, Including Those Admitted	
	Number	Row %	Number	Row %	Number	Row %
Brattleboro Memorial Hospital	11,171	91.4	1,050	8.6	12,221	100.0
Central Vermont Medical Center	27,092	91.5	2,505	8.5	29,597	100.0
Copley Hospital	12,186	98.3	213	1.7	12,399	100.0
Fletcher Allen Health Care	48,872	85.1	8,536	14.9	57,408	100.0
Gifford Medical Center	6,187	90.7	634	9.3	6,821	100.0
Grace Cottage Hospital	2,575	99.8	4	0.2	2,579	100.0
Mt. Ascutney Hospital and Health Center	5,050	98.6	72	1.4	5,122	100.0
North Country Hospital	13,083	97.6	322	2.4	13,405	100.0
Northeastern Vermont Regional Hospital	10,838	96.4	404	3.6	11,242	100.0
Northwestern Medical Center	26,316	95.9	1,117	4.1	27,433	100.0
Porter Medical Center	13,281	98.3	232	1.7	13,513	100.0
Rutland Regional Medical Center	28,918	87.5	4,129	12.5	33,047	100.0
Southwestern Vermont Medical Center	19,370	85.0	3,426	15.0	22,796	100.0
Springfield Hospital	14,650	90.7	1,506	9.3	16,156	100.0
Total	239,589	90.8	24,150	9.2	263,739	100.0

Emergency department visits include all hospital records (outpatient and inpatient) which originated in the ED. Inpatient discharges originating in the Emergency Department (24,150 in 2008) are reported here as well as in the hospital inpatient utilization report. Inpatient discharges exclude newborns (MDC 15). 20 ED records with missing or invalid diagnosis codes are excluded from this analysis.

**Table E4**  
**Clinical Classifications Software (CCS) High Level Diagnosis Groups by Age**  
**2008 VT Hospital ED Visits, Includes VT Residents and Non-Residents**  
**Number of Visits, Row and Column Percents**

Diagnosis Group	Age Group							Total
	Under 5	5-14	15-24	25-44	45-64	65-74	75+	
Injury and poisoning								
Visits	4,407	10,364	17,930	21,968	15,787	3,904	6,165	80,525
Row %	5.5	12.9	22.3	27.3	19.6	4.8	7.7	100.0
Diseases of the respiratory system								
Visits	3,515	2,529	5,125	7,054	6,399	2,829	4,552	32,003
Row %	11.0	7.9	16.0	22.0	20.0	8.8	14.2	100.0
Symptoms, signs and ill-defined conditions								
Visits	2,504	2,152	5,612	7,132	5,150	1,527	2,507	26,584
Row %	9.4	8.1	21.1	26.8	19.4	5.7	9.4	100.0
Diseases of the digestive system								
Visits	755	706	4,080	7,200	4,411	1,461	2,323	20,936
Row %	3.6	3.4	19.5	34.4	21.1	7.0	11.1	100.0
Diseases of the nervous system and sense organs								
Visits	2,121	1,725	3,326	6,475	4,660	1,095	1,464	20,866
Row %	10.2	8.3	15.9	31.0	22.3	5.2	7.0	100.0
Diseases of the circulatory system								
Visits	30	132	862	3,129	6,580	3,230	5,477	19,440
Row %	0.2	0.7	4.4	16.1	33.8	16.6	28.2	100.0
Musculoskeletal system and connective tissue								
Visits	167	590	2,500	6,286	4,743	1,193	1,756	17,235
Row %	1.0	3.4	14.5	36.5	27.5	6.9	10.2	100.0
Diseases of the genitourinary system								
Visits	209	378	2,991	3,731	2,642	1,077	1,933	12,961
Row %	1.6	2.9	23.1	28.8	20.4	8.3	14.9	100.0
Mental disorders								
Visits	20	433	2,552	3,930	2,752	434	545	10,666
Row %	0.2	4.1	23.9	36.8	25.8	4.1	5.1	100.0
Diseases of the skin and subcutaneous tissue								
Visits	512	504	1,593	2,580	2,173	628	743	8,733
Row %	5.9	5.8	18.2	29.5	24.9	7.2	8.5	100.0
Infectious and parasitic diseases								
Visits	707	374	879	838	673	265	336	4,072
Row %	17.4	9.2	21.6	20.6	16.5	6.5	8.3	100.0

**Table E4**  
**Clinical Classifications Software (CCS) High Level Diagnosis Groups by Age**  
**2008 VT Hospital ED Visits, Includes VT Residents and Non-Residents**  
**Number of Visits, Row and Column Percents**

Diagnosis Group	Age Group							Total
	Under 5	5-14	15-24	25-44	45-64	65-74	75+	
Endocrine, nutritional, metabolic and immunity disorders								
Visits	121	106	361	672	1,100	514	920	3,794
Row %	3.2	2.8	9.5	17.7	29.0	13.5	24.2	100.0
Contraception and complications of pregnancy and childbirth								
Visits	0	2	1,132	1,034	5	0	0	2,173
Row %	0.0	0.1	52.1	47.6	0.2	0.0	0.0	100.0
Residual codes, unclassified, all Ecodes								
Visits	51	62	196	401	511	227	468	1,916
Row %	2.7	3.2	10.2	20.9	26.7	11.8	24.4	100.0
Neoplasms								
Visits	8	14	20	84	277	209	234	846
Row %	0.9	1.7	2.4	9.9	32.7	24.7	27.7	100.0
Diseases of the blood and blood-forming organs								
Visits	22	30	29	82	160	104	222	649
Row %	3.4	4.6	4.5	12.6	24.7	16.0	34.2	100.0
Conditions originating in the perinatal period								
Visits	227	0	6	2	0	0	0	235
Row %	96.6	0.0	2.6	0.9	0.0	0.0	0.0	100.0
Congenital anomalies								
Visits	32	10	8	28	18	3	6	105
Row %	30.5	9.5	7.6	26.7	17.1	2.9	5.7	100.0
Total								
Visits	15,408	20,111	49,202	72,626	58,041	18,700	29,651	263,739
Row %	5.8	7.6	18.7	27.5	22.0	7.1	11.2	100.0

Emergency department visits include all hospital records (outpatient and inpatient) which originated in the ED.

Inpatient discharges originating in the Emergency Department (24,150 in 2008) are reported here as well as in the hospital inpatient utilization report.

Inpatient discharges exclude newborns (MDC 15). 20 ED records with missing or invalid diagnosis codes are excluded from this analysis.

**Table E4**  
**Clinical Classifications Software (CCS) High Level Diagnosis Groups by Age**  
**2008 VT Hospital ED Visits, Includes VT Residents and Non-Residents**  
**Number of Visits, Row and Column Percents**

Diagnosis Group	Age Group							Total
	Under 5	5-14	15-24	25-44	45-64	65-74	75+	
Injury and poisoning								
Visits	4,407	10,364	17,930	21,968	15,787	3,904	6,165	80,525
Col %	28.6	51.5	36.4	30.2	27.2	20.9	20.8	30.5
Diseases of the respiratory system								
Visits	3,515	2,529	5,125	7,054	6,399	2,829	4,552	32,003
Col %	22.8	12.6	10.4	9.7	11.0	15.1	15.4	12.1
Symptoms, signs and ill-defined conditions								
Visits	2,504	2,152	5,612	7,132	5,150	1,527	2,507	26,584
Col %	16.3	10.7	11.4	9.8	8.9	8.2	8.5	10.1
Diseases of the digestive system								
Visits	755	706	4,080	7,200	4,411	1,461	2,323	20,936
Col %	4.9	3.5	8.3	9.9	7.6	7.8	7.8	7.9
Diseases of the nervous system and sense organs								
Visits	2,121	1,725	3,326	6,475	4,660	1,095	1,464	20,866
Col %	13.8	8.6	6.8	8.9	8.0	5.9	4.9	7.9
Diseases of the circulatory system								
Visits	30	132	862	3,129	6,580	3,230	5,477	19,440
Col %	0.2	0.7	1.8	4.3	11.3	17.3	18.5	7.4
Musculoskeletal system and connective tissue								
Visits	167	590	2,500	6,286	4,743	1,193	1,756	17,235
Col %	1.1	2.9	5.1	8.7	8.2	6.4	5.9	6.5
Diseases of the genitourinary system								
Visits	209	378	2,991	3,731	2,642	1,077	1,933	12,961
Col %	1.4	1.9	6.1	5.1	4.6	5.8	6.5	4.9
Mental disorders								
Visits	20	433	2,552	3,930	2,752	434	545	10,666
Col %	0.1	2.2	5.2	5.4	4.7	2.3	1.8	4.0
Diseases of the skin and subcutaneous tissue								
Visits	512	504	1,593	2,580	2,173	628	743	8,733
Col %	3.3	2.5	3.2	3.6	3.7	3.4	2.5	3.3
Infectious and parasitic diseases								
Visits	707	374	879	838	673	265	336	4,072
Col %	4.6	1.9	1.8	1.2	1.2	1.4	1.1	1.5



**Table E4**  
**Clinical Classifications Software (CCS) High Level Diagnosis Groups by Age**  
**2008 VT Hospital ED Visits, Includes VT Residents and Non-Residents**  
**Number of Visits, Row and Column Percents**

Diagnosis Group	Age Group							Total
	Under 5	5-14	15-24	25-44	45-64	65-74	75+	
Endocrine, nutritional, metabolic and immunity disorders								
Visits	121	106	361	672	1,100	514	920	3,794
Col %	0.8	0.5	0.7	0.9	1.9	2.7	3.1	1.4
Contraception and complications of pregnancy and childbirth								
Visits	0	2	1,132	1,034	5	0	0	2,173
Col %	0.0	0.0	2.3	1.4	0.0	0.0	0.0	0.8
Residual codes, unclassified, all Ecodes								
Visits	51	62	196	401	511	227	468	1,916
Col %	0.3	0.3	0.4	0.6	0.9	1.2	1.6	0.7
Neoplasms								
Visits	8	14	20	84	277	209	234	846
Col %	0.1	0.1	0.0	0.1	0.5	1.1	0.8	0.3
Diseases of the blood and blood-forming organs								
Visits	22	30	29	82	160	104	222	649
Col %	0.1	0.1	0.1	0.1	0.3	0.6	0.7	0.2
Conditions originating in the perinatal period								
Visits	227	0	6	2	0	0	0	235
Col %	1.5	0.0	0.0	0.0	0.0	0.0	0.0	0.1
Congenital anomalies								
Visits	32	10	8	28	18	3	6	105
Col %	0.2	0.0	0.0	0.0	0.0	0.0	0.0	0.0
Total								
Visits	15,408	20,111	49,202	72,626	58,041	18,700	29,651	263,739
Col %	100.0	100.0	100.0	100.0	100.0	100.0	100.0	100.0

Emergency department visits include all hospital records (outpatient and inpatient) which originated in the ED.

Inpatient discharges originating in the Emergency Department (24,150 in 2008) are reported here as well as in the hospital inpatient utilization report.

Inpatient discharges exclude newborns (MDC 15). 20 ED records with missing or invalid diagnosis codes are excluded from this analysis.

**Table E5**  
**Clinical Classifications Software (CCS) High Level Diagnosis Groups by Sex and Age**  
**2008 VT Hospital ED Visits, Includes VT Residents and Non-Residents**  
**Number of Visits, Row and Column Percents**

Diagnosis Group	Males					Total for Males	Females					Total for Both Sexes
	Under 15	15-44	45-64	65+	Females		Under 15	15-44	45-64	65+	Females	
Injury and poisoning												
Visits	8,470	23,081	8,137	4,061	43,749	6,301	16,816	7,650	6,008	36,775	80,524	
Row %	10.5	28.7	10.1	5.0	54.3	7.8	20.9	9.5	7.5	45.7	100.0	
Diseases of the respiratory system												
Visits	3,324	4,827	2,833	3,472	14,456	2,720	7,352	3,566	3,909	17,547	32,003	
Row %	10.4	15.1	8.9	10.8	45.2	8.5	23.0	11.1	12.2	54.8	100.0	
Symptoms, signs and ill-defined conditions												
Visits	2,318	4,455	2,190	1,683	10,646	2,338	8,289	2,960	2,351	15,938	26,584	
Row %	8.7	16.8	8.2	6.3	40.0	8.8	31.2	11.1	8.8	60.0	100.0	
Diseases of the digestive system												
Visits	757	5,479	2,173	1,604	10,013	704	5,801	2,238	2,180	10,923	20,936	
Row %	3.6	26.2	10.4	7.7	47.8	3.4	27.7	10.7	10.4	52.2	100.0	
Diseases of the nervous system and sense organs												
Visits	1,995	3,715	1,913	1,049	8,672	1,851	6,086	2,747	1,510	12,194	20,866	
Row %	9.6	17.8	9.2	5.0	41.6	8.9	29.2	13.2	7.2	58.4	100.0	
Diseases of the circulatory system												
Visits	83	2,138	3,584	3,932	9,737	79	1,853	2,996	4,775	9,703	19,440	
Row %	0.4	11.0	18.4	20.2	50.1	0.4	9.5	15.4	24.6	49.9	100.0	
Musculoskeletal system and connective tissue												
Visits	355	4,185	2,204	1,119	7,863	402	4,601	2,539	1,830	9,372	17,235	
Row %	2.1	24.3	12.8	6.5	45.6	2.3	26.7	14.7	10.6	54.4	100.0	
Diseases of the genitourinary system												
Visits	183	1,510	1,229	1,451	4,373	404	5,212	1,413	1,559	8,588	12,961	
Row %	1.4	11.7	9.5	11.2	33.7	3.1	40.2	10.9	12.0	66.3	100.0	
Mental disorders												
Visits	232	3,082	1,400	384	5,098	221	3,400	1,352	595	5,568	10,666	
Row %	2.2	28.9	13.1	3.6	47.8	2.1	31.9	12.7	5.6	52.2	100.0	
Diseases of the skin and subcutaneous tissue												
Visits	539	2,259	1,189	635	4,622	477	1,914	984	736	4,111	8,733	
Row %	6.2	25.9	13.6	7.3	52.9	5.5	21.9	11.3	8.4	47.1	100.0	
Infectious and parasitic diseases												
Visits	537	722	310	300	1,869	544	995	363	301	2,203	4,072	
Row %	13.2	17.7	7.6	7.4	45.9	13.4	24.4	8.9	7.4	54.1	100.0	

**Table E5**  
**Clinical Classifications Software (CCS) High Level Diagnosis Groups by Sex and Age**  
**2008 VT Hospital ED Visits, Includes VT Residents and Non-Residents**  
**Number of Visits, Row and Column Percents**

Diagnosis Group	Males					Total for Males	Females					Total for Both Sexes
	Under 15	15-44	45-64	65+	Females		Under 15	15-44	45-64	65+	Total for Females	
Endocrine, nutritional, metabolic and immunity disorders												
Visits	115	483	622	610	1,830	112	550	478	824	1,964	3,794	
Row %	3.0	12.7	16.4	16.1	48.2	3.0	14.5	12.6	21.7	51.8	100.0	
Contraception and complications of pregnancy and childbirth												
Visits	0	0	0	0	0	2	2,166	5	0	2,173	2,173	
Row %	0.0	0.0	0.0	0.0	0.0	0.1	99.7	0.2	0.0	100.0	100.0	
Residual codes, unclassified, all Ecodes												
Visits	54	220	257	293	824	59	377	254	402	1,092	1,916	
Row %	2.8	11.5	13.4	15.3	43.0	3.1	19.7	13.3	21.0	57.0	100.0	
Neoplasms												
Visits	11	42	142	211	406	11	62	135	232	440	846	
Row %	1.3	5.0	16.8	24.9	48.0	1.3	7.3	16.0	27.4	52.0	100.0	
Diseases of the blood and blood-forming organs												
Visits	31	51	73	140	295	21	60	87	186	354	649	
Row %	4.8	7.9	11.2	21.6	45.5	3.2	9.2	13.4	28.7	54.5	100.0	
Conditions originating in the perinatal period												
Visits	108	0	0	0	108	119	8	0	0	127	235	
Row %	46.0	0.0	0.0	0.0	46.0	50.6	3.4	0.0	0.0	54.0	100.0	
Congenital anomalies												
Visits	31	19	11	6	67	11	17	7	3	38	105	
Row %	29.5	18.1	10.5	5.7	63.8	10.5	16.2	6.7	2.9	36.2	100.0	
Total												
Visits	19,143	56,268	28,267	20,950	124,628	16,376	65,559	29,774	27,401	139,110	263,738	
Row %	7.3	21.3	10.7	7.9	47.3	6.2	24.9	11.3	10.4	52.7	100.0	

One record with missing value for sex was excluded from the above totals.

Emergency department visits include all hospital records (outpatient and inpatient) which originated in the ED.

Inpatient discharges originating in the Emergency Department (24,150 in 2008) are reported here as well as in the hospital inpatient utilization report.

Inpatient discharges exclude newborns (MDC 15). 20 ED records with missing or invalid diagnosis codes are excluded from this analysis.

**Table E5**  
**Clinical Classifications Software (CCS) High Level Diagnosis Groups by Sex and Age**  
**2008 VT Hospital ED Visits, Includes VT Residents and Non-Residents**  
**Number of Visits, Row and Column Percents**

Diagnosis Group	Males					Total for Males	Females					Total for Both Sexes
	Under 15	15-44	45-64	65+	Females		Under 15	15-44	45-64	65+	Total for Females	
Injury and poisoning												
Visits	8,470	23,081	8,137	4,061	43,749	6,301	16,816	7,650	6,008	36,775	80,524	
Col %	44.2	41.0	28.8	19.4	35.1	38.5	25.7	25.7	21.9	26.4	30.5	
Diseases of the respiratory system												
Visits	3,324	4,827	2,833	3,472	14,456	2,720	7,352	3,566	3,909	17,547	32,003	
Col %	17.4	8.6	10.0	16.6	11.6	16.6	11.2	12.0	14.3	12.6	12.1	
Symptoms, signs and ill-defined conditions												
Visits	2,318	4,455	2,190	1,683	10,646	2,338	8,289	2,960	2,351	15,938	26,584	
Col %	12.1	7.9	7.7	8.0	8.5	14.3	12.6	9.9	8.6	11.5	10.1	
Diseases of the digestive system												
Visits	757	5,479	2,173	1,604	10,013	704	5,801	2,238	2,180	10,923	20,936	
Col %	4.0	9.7	7.7	7.7	8.0	4.3	8.8	7.5	8.0	7.9	7.9	
Diseases of the nervous system and sense organs												
Visits	1,995	3,715	1,913	1,049	8,672	1,851	6,086	2,747	1,510	12,194	20,866	
Col %	10.4	6.6	6.8	5.0	7.0	11.3	9.3	9.2	5.5	8.8	7.9	
Diseases of the circulatory system												
Visits	83	2,138	3,584	3,932	9,737	79	1,853	2,996	4,775	9,703	19,440	
Col %	0.4	3.8	12.7	18.8	7.8	0.5	2.8	10.1	17.4	7.0	7.4	
Musculoskeletal system and connective tissue												
Visits	355	4,185	2,204	1,119	7,863	402	4,601	2,539	1,830	9,372	17,235	
Col %	1.9	7.4	7.8	5.3	6.3	2.5	7.0	8.5	6.7	6.7	6.5	
Diseases of the genitourinary system												
Visits	183	1,510	1,229	1,451	4,373	404	5,212	1,413	1,559	8,588	12,961	
Col %	1.0	2.7	4.3	6.9	3.5	2.5	8.0	4.7	5.7	6.2	4.9	
Mental disorders												
Visits	232	3,082	1,400	384	5,098	221	3,400	1,352	595	5,568	10,666	
Col %	1.2	5.5	5.0	1.8	4.1	1.3	5.2	4.5	2.2	4.0	4.0	
Diseases of the skin and subcutaneous tissue												
Visits	539	2,259	1,189	635	4,622	477	1,914	984	736	4,111	8,733	
Col %	2.8	4.0	4.2	3.0	3.7	2.9	2.9	3.3	2.7	3.0	3.3	
Infectious and parasitic diseases												
Visits	537	722	310	300	1,869	544	995	363	301	2,203	4,072	
Col %	2.8	1.3	1.1	1.4	1.5	3.3	1.5	1.2	1.1	1.6	1.5	

**Table E5**  
**Clinical Classifications Software (CCS) High Level Diagnosis Groups by Sex and Age**  
**2008 VT Hospital ED Visits, Includes VT Residents and Non-Residents**  
**Number of Visits, Row and Column Percents**

Diagnosis Group	Males					Total for Males	Females					Total for Both Sexes
	Under 15	15-44	45-64	65+	Females		Under 15	15-44	45-64	65+	Total for Females	
Endocrine, nutritional, metabolic and immunity disorders												
Visits	115	483	622	610	1,830	112	550	478	824	1,964	3,794	
Col %	0.6	0.9	2.2	2.9	1.5	0.7	0.8	1.6	3.0	1.4	1.4	
Contraception and complications of pregnancy and childbirth												
Visits	0	0	0	0	0	2	2,166	5	0	2,173	2,173	
Col %	0.0	0.0	0.0	0.0	0.0	0.0	3.3	0.0	0.0	1.6	0.8	
Residual codes, unclassified, all Ecodes												
Visits	54	220	257	293	824	59	377	254	402	1,092	1,916	
Col %	0.3	0.4	0.9	1.4	0.7	0.4	0.6	0.9	1.5	0.8	0.7	
Neoplasms												
Visits	11	42	142	211	406	11	62	135	232	440	846	
Col %	0.1	0.1	0.5	1.0	0.3	0.1	0.1	0.5	0.8	0.3	0.3	
Diseases of the blood and blood-forming organs												
Visits	31	51	73	140	295	21	60	87	186	354	649	
Col %	0.2	0.1	0.3	0.7	0.2	0.1	0.1	0.3	0.7	0.3	0.2	
Conditions originating in the perinatal period												
Visits	108	0	0	0	108	119	8	0	0	127	235	
Col %	0.6	0.0	0.0	0.0	0.1	0.7	0.0	0.0	0.0	0.1	0.1	
Congenital anomalies												
Visits	31	19	11	6	67	11	17	7	3	38	105	
Col %	0.2	0.0	0.0	0.0	0.1	0.1	0.0	0.0	0.0	0.0	0.0	
Total												
Visits	19,143	56,268	28,267	20,950	124,628	16,376	65,559	29,774	27,401	139,110	263,738	
Col %	100.0	100.0	100.0	100.0	100.0	100.0	100.0	100.0	100.0	100.0	100.0	

One record with missing value for sex was excluded from the above totals.

Emergency department visits include all hospital records (outpatient and inpatient) which originated in the ED.

Inpatient discharges originating in the Emergency Department (24,150 in 2008) are reported here as well as in the hospital inpatient utilization report.

Inpatient discharges exclude newborns (MDC 15). 20 ED records with missing or invalid diagnosis codes are excluded from this analysis.

**Table E6**  
**Clinical Classifications Software (CCS) High Level Diagnosis Groups by Primary Payer**  
**2008 VT Hospital ED Visits, Includes VT Residents and Non-Residents**  
**Number of Visits and Row Percents**

Diagnosis Group	Medicare	Medicaid	Other Gov't	Work. Comp.	Private Ins.	Other	Unknown	Total
Injury and poisoning								
Visits	12,237	19,640	788	5,500	32,171	10,158	31	80,525
Row %	15.2	24.4	1.0	6.8	40.0	12.6	0.0	100.0
Diseases of the respiratory system								
Visits	9,115	9,104	257	50	10,081	3,390	6	32,003
Row %	28.5	28.4	0.8	0.2	31.5	10.6	0.0	100.0
Symptoms, signs and ill-defined conditions								
Visits	5,454	8,148	250	211	9,490	3,026	5	26,584
Row %	20.5	30.7	0.9	0.8	35.7	11.4	0.0	100.0
Diseases of the digestive system								
Visits	4,932	6,351	146	42	6,179	3,285	1	20,936
Row %	23.6	30.3	0.7	0.2	29.5	15.7	0.0	100.0
Diseases of the nervous system and sense organs								
Visits	4,049	6,736	230	235	7,414	2,199	3	20,866
Row %	19.4	32.3	1.1	1.1	35.5	10.5	0.0	100.0
Diseases of the circulatory system								
Visits	9,530	2,174	169	53	6,328	1,180	6	19,440
Row %	49.0	11.2	0.9	0.3	32.6	6.1	0.0	100.0
Musculoskeletal system and connective tissue								
Visits	4,270	4,642	146	735	5,403	2,037	2	17,235
Row %	24.8	26.9	0.8	4.3	31.3	11.8	0.0	100.0
Diseases of the genitourinary system								
Visits	3,563	3,218	100	14	4,575	1,489	2	12,961
Row %	27.5	24.8	0.8	0.1	35.3	11.5	0.0	100.0
Mental disorders								
Visits	2,465	3,847	71	24	2,733	1,524	2	10,666
Row %	23.1	36.1	0.7	0.2	25.6	14.3	0.0	100.0
Diseases of the skin and subcutaneous tissue								
Visits	1,939	2,487	56	118	2,885	1,246	2	8,733
Row %	22.2	28.5	0.6	1.4	33.0	14.3	0.0	100.0
Infectious and parasitic diseases								
Visits	772	1,323	40	26	1,413	498	0	4,072
Row %	19.0	32.5	1.0	0.6	34.7	12.2	0.0	100.0

**Table E6**  
**Clinical Classifications Software (CCS) High Level Diagnosis Groups by Primary Payer**  
**2008 VT Hospital ED Visits, Includes VT Residents and Non-Residents**  
**Number of Visits and Row Percents**

Diagnosis Group	Medicare	Medicaid	Other Gov't	Work. Comp.	Private Ins.	Other	Unknown	Total
Endocrine, nutritional, metabolic and immunity disorders								
Visits	1,778	717	25	2	1,021	251	0	3,794
Row %	46.9	18.9	0.7	0.1	26.9	6.6	0.0	100.0
Contraception and complications of pregnancy and childbirth								
Visits	51	1,142	32	9	697	242	0	2,173
Row %	2.3	52.6	1.5	0.4	32.1	11.1	0.0	100.0
Residual codes, unclassified, all Ecodes								
Visits	841	382	27	73	475	118	0	1,916
Row %	43.9	19.9	1.4	3.8	24.8	6.2	0.0	100.0
Neoplasms								
Visits	446	97	4	0	266	33	0	846
Row %	52.7	11.5	0.5	0.0	31.4	3.9	0.0	100.0
Diseases of the blood and blood-forming organs								
Visits	357	80	1	0	182	29	0	649
Row %	55.0	12.3	0.2	0.0	28.0	4.5	0.0	100.0
Conditions originating in the perinatal period								
Visits	0	146	1	0	56	32	0	235
Row %	0.0	62.1	0.4	0.0	23.8	13.6	0.0	100.0
Congenital anomalies								
Visits	18	41	0	1	37	8	0	105
Row %	17.1	39.0	0.0	1.0	35.2	7.6	0.0	100.0
Total								
Visits	61,817	70,275	2,343	7,093	91,406	30,745	60	263,739
Row %	23.4	26.6	0.9	2.7	34.7	11.7	0.0	100.0

"Other" payer includes self-pay, no charge, and other sources of payment

Emergency department visits include all hospital records (outpatient and inpatient) which originated in the ED.

Inpatient discharges originating in the Emergency Department (24,150 in 2008) are reported here as well as in the hospital inpatient utilization report.

Inpatient discharges exclude newborns (MDC 15). 20 ED records with missing or invalid diagnosis codes are excluded from this analysis.

**Table E7**  
**Primary Payer by Age**  
**2008 VT Hospital ED Visits, Includes VT Residents and Non-Residents**  
**Number of Visits and Column Percents**

Primary Payer	Age Group							Total
	Under 5	5-14	15-24	25-44	45-64	65-74	75+	
Medicare								
Visits	0	4	670	6,226	10,606	16,000	28,311	61,817
Column %	0.0	0.0	1.4	8.6	18.3	85.6	95.5	23.4
Medicaid								
Visits	9,546	9,780	17,541	23,116	10,145	106	41	70,275
Column %	62.0	48.6	35.7	31.8	17.5	0.6	0.1	26.6
Other Gov't								
Visits	156	239	538	633	671	37	69	2,343
Column %	1.0	1.2	1.1	0.9	1.2	0.2	0.2	0.9
Work. Comp.								
Visits	1	0	1,486	3,341	2,105	134	26	7,093
Column %	0.0	0.0	3.0	4.6	3.6	0.7	0.1	2.7
Private Ins.								
Visits	4,491	8,828	19,761	25,894	29,138	2,231	1,063	91,406
Column %	29.1	43.9	40.2	35.7	50.2	11.9	3.6	34.7
Other								
Visits	1,214	1,256	9,189	13,405	5,364	188	129	30,745
Column %	7.9	6.2	18.7	18.5	9.2	1.0	0.4	11.7
Unknown								
Visits	0	4	17	11	12	4	12	60
Column %	0.0	0.0	0.0	0.0	0.0	0.0	0.0	0.0
Total								
Visits	15,408	20,111	49,202	72,626	58,041	18,700	29,651	263,739
Column %	100.0	100.0	100.0	100.0	100.0	100.0	100.0	100.0

"Other" payer includes self-pay, no charge, and other sources of payment

Emergency department visits include all hospital records (outpatient and inpatient) which originated in the ED.

Inpatient discharges originating in the Emergency Department (24,150 in 2008) are reported here as well as in the hospital inpatient utilization report.

Inpatient discharges exclude newborns (MDC 15). 20 ED records with missing or invalid diagnosis codes are excluded from this analysis.



**Table E8a**  
**Emergency Department Visits by Data Year**  
**2004-2008 VT Hospital ED Visits, Includes VT Residents and Non-Residents**  
**Number of Visits and Row Percents**

Inpatient Discharges Originating in ED

		BRAT	CVMC	COPL	FAHC	GIFF	GRAC	MT.A.	NCTY	NEVT	NWST	PORT	RRMC	SWVT	SPRF	TOTAL
2004	Count	1,110	2,148	614	7,945	501	0	59	850	711	1,327	746	4,010	2,821	1,315	24,157
	Row %	4.6	8.9	2.5	32.9	2.1	0.0	0.2	3.5	2.9	5.5	3.1	16.6	11.7	5.4	100.0
2005	Count	1,182	2,092	471	7,684	458	1	66	381	586	1,173	821	4,136	2,987	1,250	23,288
	Row %	5.1	9.0	2.0	33.0	2.0	0.0	0.3	1.6	2.5	5.0	3.5	17.8	12.8	5.4	100.0
2006	Count	1,274	2,199	193	8,007	453	2	46	268	252	1,188	289	3,975	3,327	1,118	22,591
	Row %	5.6	9.7	0.9	35.4	2.0	0.0	0.2	1.2	1.1	5.3	1.3	17.6	14.7	4.9	100.0
2007	Count	1,190	2,290	196	8,219	629	1	61	297	318	1,339	239	4,134	3,451	1,461	23,825
	Row %	5.0	9.6	0.8	34.5	2.6	0.0	0.3	1.2	1.3	5.6	1.0	17.4	14.5	6.1	100.0
2008	Count	1,050	2,505	213	8,536	634	4	72	322	404	1,117	232	4,129	3,426	1,506	24,150
	Row %	4.3	10.4	0.9	35.3	2.6	0.0	0.3	1.3	1.7	4.6	1.0	17.1	14.2	6.2	100.0

Emergency Dept. (ED) Visits, Not Admitted

		BRAT	CVMC	COPL	FAHC	GIFF	GRAC	MT.A.	NCTY	NEVT	NWST	PORT	RRMC	SWVT	SPRF	TOTAL
2004	Count	9,528	18,264	10,422	40,532	5,563	2,043	5,105	9,310	9,022	21,454	11,437	28,220	17,136	10,999	199,035
	Row %	4.8	9.2	5.2	20.4	2.8	1.0	2.6	4.7	4.5	10.8	5.7	14.2	8.6	5.5	100.0
2005	Count	10,579	23,445	11,206	43,420	5,901	2,049	5,754	10,653	9,659	23,345	12,221	29,537	17,406	11,454	216,629
	Row %	4.9	10.8	5.2	20.0	2.7	0.9	2.7	4.9	4.5	10.8	5.6	13.6	8.0	5.3	100.0
2006	Count	10,682	25,546	11,567	44,913	6,088	2,165	5,647	11,184	10,089	23,513	13,024	30,441	17,529	13,616	226,004
	Row %	4.7	11.3	5.1	19.9	2.7	1.0	2.5	4.9	4.5	10.4	5.8	13.5	7.8	6.0	100.0
2007	Count	11,015	25,414	11,557	46,055	5,948	2,431	5,273	12,307	10,498	25,664	12,719	29,585	18,238	14,060	230,764
	Row %	4.8	11.0	5.0	20.0	2.6	1.1	2.3	5.3	4.5	11.1	5.5	12.8	7.9	6.1	100.0
2008	Count	11,171	27,092	12,186	48,872	6,187	2,575	5,050	13,083	10,838	26,316	13,281	28,918	19,370	14,650	239,589
	Row %	4.7	11.3	5.1	20.4	2.6	1.1	2.1	5.5	4.5	11.0	5.5	12.1	8.1	6.1	100.0

**Table E8a**  
**Emergency Department Visits by Data Year**  
**2004-2008 VT Hospital ED Visits, Includes VT Residents and Non-Residents**  
**Number of Visits and Row Percents**

All ED Visits, Including Those Admitted

		BRAT	CVMC	COPL	FAHC	GIFF	GRAC	MT.A.	NCTY	NEVT	NWST	PORT	RRMC	SWVT	SPRF	TOTAL
2004	Count	10,638	20,412	11,036	48,477	6,064	2,043	5,164	10,160	9,733	22,781	12,183	32,230	19,957	12,314	223,192
	Row %	4.8	9.1	4.9	21.7	2.7	0.9	2.3	4.6	4.4	10.2	5.5	14.4	8.9	5.5	100.0
2005	Count	11,761	25,537	11,677	51,104	6,359	2,050	5,820	11,034	10,245	24,518	13,042	33,673	20,393	12,704	239,917
	Row %	4.9	10.6	4.9	21.3	2.7	0.9	2.4	4.6	4.3	10.2	5.4	14.0	8.5	5.3	100.0
2006	Count	11,956	27,745	11,760	52,920	6,541	2,167	5,693	11,452	10,341	24,701	13,313	34,416	20,856	14,734	248,595
	Row %	4.8	11.2	4.7	21.3	2.6	0.9	2.3	4.6	4.2	9.9	5.4	13.8	8.4	5.9	100.0
2007	Count	12,205	27,704	11,753	54,274	6,577	2,432	5,334	12,604	10,816	27,003	12,958	33,719	21,689	15,521	254,589
	Row %	4.8	10.9	4.6	21.3	2.6	1.0	2.1	5.0	4.2	10.6	5.1	13.2	8.5	6.1	100.0
2008	Count	12,221	29,597	12,399	57,408	6,821	2,579	5,122	13,405	11,242	27,433	13,513	33,047	22,796	16,156	263,739
	Row %	4.6	11.2	4.7	21.8	2.6	1.0	1.9	5.1	4.3	10.4	5.1	12.5	8.6	6.1	100.0

Emergency department visits include all hospital records (outpatient and inpatient) which originated in the ED.

Inpatient discharges originating in the Emergency Department are reported here as well as in the hospital inpatient utilization report.

Inpatient discharges exclude newborns (MDC 15). ED records with missing or invalid diagnosis codes are excluded from this analysis.

**Table E8b**  
**Clinical Classifications Software (CCS) High Level Diagnosis Groups by Vermont Hospitals**  
**2008 VT Hospital ED Visits, Includes VT Residents and Non-Residents**  
**Number of Visits and Column Percents**

	BRAT	CVMC	COPL	FAHC	GIFF	GRAC	MT.A	NCTY	NEVT	NWST	PORT	RRMC	SWVT	SPRF	Total
Injury and poisoning															
Visits	4,105	7,977	4,713	17,529	2,088	861	1,573	3,839	3,411	8,378	4,332	10,198	6,724	4,797	80,525
Col %	33.6	27.0	38.0	30.5	30.6	33.4	30.7	28.6	30.3	30.5	32.1	30.9	29.5	29.7	30.5
Diseases of the respiratory system															
Visits	1,512	3,879	1,572	5,283	876	332	673	1,988	1,570	3,890	1,641	3,909	2,885	1,993	32,003
Col %	12.4	13.1	12.7	9.2	12.8	12.9	13.1	14.8	14.0	14.2	12.1	11.8	12.7	12.3	12.1
Symptoms, signs and ill-defined conditions															
Visits	851	2,897	1,096	6,725	530	259	593	1,333	1,163	2,883	1,428	3,178	2,077	1,571	26,584
Col %	7.0	9.8	8.8	11.7	7.8	10.0	11.6	9.9	10.3	10.5	10.6	9.6	9.1	9.7	10.1
Diseases of the digestive system															
Visits	1,127	2,422	919	4,428	652	159	362	883	867	2,060	1,054	2,721	1,944	1,338	20,936
Col %	9.2	8.2	7.4	7.7	9.6	6.2	7.1	6.6	7.7	7.5	7.8	8.2	8.5	8.3	7.9
Diseases of the nervous system and sense organs															
Visits	829	2,272	919	4,450	546	235	373	1,085	1,053	2,316	1,064	2,918	1,670	1,136	20,866
Col %	6.8	7.7	7.4	7.8	8.0	9.1	7.3	8.1	9.4	8.4	7.9	8.8	7.3	7.0	7.9
Diseases of the circulatory system															
Visits	793	1,859	611	5,072	469	170	425	931	707	1,541	905	2,429	2,139	1,389	19,440
Col %	6.5	6.3	4.9	8.8	6.9	6.6	8.3	6.9	6.3	5.6	6.7	7.4	9.4	8.6	7.4
Musculoskeletal system and connective tissue															
Visits	705	3,000	789	2,653	605	167	273	1,058	671	2,136	985	1,942	1,439	812	17,235
Col %	5.8	10.1	6.4	4.6	8.9	6.5	5.3	7.9	6.0	7.8	7.3	5.9	6.3	5.0	6.5
Diseases of the genitourinary system															
Visits	519	1,360	575	2,689	327	112	242	701	649	1,422	679	1,554	1,280	852	12,961
Col %	4.2	4.6	4.6	4.7	4.8	4.3	4.7	5.2	5.8	5.2	5.0	4.7	5.6	5.3	4.9
Mental disorders															
Visits	798	1,403	307	3,033	174	61	157	372	425	631	403	1,421	726	755	10,666
Col %	6.5	4.7	2.5	5.3	2.6	2.4	3.1	2.8	3.8	2.3	3.0	4.3	3.2	4.7	4.0
Diseases of the skin and subcutaneous tissue															
Visits	300	1,084	327	1,809	199	88	226	455	302	1,045	436	993	697	772	8,733
Col %	2.5	3.7	2.6	3.2	2.9	3.4	4.4	3.4	2.7	3.8	3.2	3.0	3.1	4.8	3.3
Infectious and parasitic diseases															
Visits	142	619	196	874	137	51	56	230	83	321	189	574	376	224	4,072
Col %	1.2	2.1	1.6	1.5	2.0	2.0	1.1	1.7	0.7	1.2	1.4	1.7	1.6	1.4	1.5

**Table E8b**  
**Clinical Classifications Software (CCS) High Level Diagnosis Groups by Vermont Hospitals**  
**2008 VT Hospital ED Visits, Includes VT Residents and Non-Residents**  
**Number of Visits and Column Percents**

	BRAT	CVMC	COPL	FAHC	GIFF	GRAC	MT.A	NCTY	NEVT	NWST	PORT	RRMC	SWVT	SPRF	Total
Endocrine, nutritional, metabolic and immunity disorders															
Visits	258	334	140	956	91	49	96	182	120	363	177	475	360	193	3,794
Col %	2.1	1.1	1.1	1.7	1.3	1.9	1.9	1.4	1.1	1.3	1.3	1.4	1.6	1.2	1.4
Contraception and complications of pregnancy and childbirth															
Visits	111	135	95	855	28	3	10	137	54	120	75	295	137	118	2,173
Col %	0.9	0.5	0.8	1.5	0.4	0.1	0.2	1.0	0.5	0.4	0.6	0.9	0.6	0.7	0.8
Residual codes, unclassified, all Ecodes															
Visits	74	186	93	460	56	19	38	132	99	188	89	217	154	111	1,916
Col %	0.6	0.6	0.8	0.8	0.8	0.7	0.7	1.0	0.9	0.7	0.7	0.7	0.7	0.7	0.7
Neoplasms															
Visits	54	81	13	311	8	1	13	31	32	43	20	107	79	53	846
Col %	0.4	0.3	0.1	0.5	0.1	0.0	0.3	0.2	0.3	0.2	0.1	0.3	0.3	0.3	0.3
Diseases of the blood and blood-forming organs															
Visits	28	62	19	182	19	4	9	30	25	64	25	72	80	30	649
Col %	0.2	0.2	0.2	0.3	0.3	0.2	0.2	0.2	0.2	0.2	0.2	0.2	0.2	0.4	0.2
Conditions originating in the perinatal period															
Visits	11	19	15	53	7	6	3	8	11	28	8	33	23	10	235
Col %	0.1	0.1	0.1	0.1	0.1	0.2	0.1	0.1	0.1	0.1	0.1	0.1	0.1	0.1	0.1
Congenital anomalies															
Visits	4	8	0	46	9	2	0	10	0	4	3	11	6	2	105
Col %	0.0	0.0	0.0	0.1	0.1	0.1	0.0	0.1	0.0	0.0	0.0	0.0	0.0	0.0	0.0
Total															
Visits	12,221	29,597	12,399	57,408	6,821	2,579	5,122	13,405	11,242	27,433	13,513	33,047	22,796	16,156	263,739
Col %	100.0	100.0	100.0	100.0	100.0	100.0	100.0	100.0	100.0	100.0	100.0	100.0	100.0	100.0	100.0

Emergency department visits include all hospital records (outpatient and inpatient) which originated in the ED.  
 Inpatient discharges originating in the Emergency Department (24,150 in 2008) are reported here as well as in the hospital inpatient utilization report.  
 Inpatient discharges exclude newborns (MDC 15). 20 ED records with missing or invalid diagnosis codes are excluded from this analysis.

**Table E9**  
**Primary Payer by Vermont Hospitals**  
**2008 VT Hospital ED Visits, Includes VT Residents and Non-Residents**  
**Number of Visits and Column Percents**

	BRAT	CVMC	COPL	FAHC	GIFF	GRAC	MT.A	NCTY	NEVT	NWST	PORT	RRMC	SWVT	SPRF	Total
<b>Medicare</b>															
Visits	3,062	6,757	2,406	12,397	1,657	693	1,388	3,343	2,398	5,962	3,129	7,900	6,196	4,529	61,817
Col %	25.1	22.8	19.4	21.6	24.3	26.9	27.1	24.9	21.3	21.7	23.2	23.9	27.2	28.0	23.4
<b>Medicaid</b>															
Visits	2,939	8,378	2,874	13,483	1,784	583	972	4,881	3,192	8,641	3,271	9,607	5,406	4,264	70,275
Col %	24.0	28.3	23.2	23.5	26.2	22.6	19.0	36.4	28.4	31.5	24.2	29.1	23.7	26.4	26.6
<b>Other Gov't</b>															
Visits	53	332	1	959	62	9	20	112	25	315	93	205	115	42	2,343
Col %	0.4	1.1	0.0	1.7	0.9	0.3	0.4	0.8	0.2	1.1	0.7	0.6	0.5	0.3	0.9
<b>Work. Comp.</b>															
Visits	503	760	320	1,173	171	51	174	404	272	771	476	1,054	758	206	7,093
Col %	4.1	2.6	2.6	2.0	2.5	2.0	3.4	3.0	2.4	2.8	3.5	3.2	3.3	1.3	2.7
<b>Private Ins.</b>															
Visits	4,392	10,722	4,404	23,493	2,209	910	1,086	3,582	4,156	8,559	4,885	10,426	7,936	4,646	91,406
Col %	35.9	36.2	35.5	40.9	32.4	35.3	21.2	26.7	37.0	31.2	36.2	31.5	34.8	28.8	34.7
<b>Other</b>															
Visits	1,269	2,648	2,394	5,898	938	333	1,482	1,083	1,199	3,173	1,659	3,815	2,385	2,469	30,745
Col %	10.4	8.9	19.3	10.3	13.8	12.9	28.9	8.1	10.7	11.6	12.3	11.5	10.5	15.3	11.7
<b>Unknown</b>															
Visits	3	0	0	5	0	0	0	0	0	12	0	40	0	0	60
Col %	0.0	0.0	0.0	0.0	0.0	0.0	0.0	0.0	0.0	0.0	0.0	0.1	0.0	0.0	0.0
<b>Total</b>															
Visits	12,221	29,597	12,399	57,408	6,821	2,579	5,122	13,405	11,242	27,433	13,513	33,047	22,796	16,156	263,739
Col %	100.0	100.0	100.0	100.0	100.0	100.0	100.0	100.0	100.0	100.0	100.0	100.0	100.0	100.0	100.0

"Other" payer includes self-pay, no charge, and other sources of payment

Emergency department visits include all hospital records (outpatient and inpatient) which originated in the ED.

Inpatient discharges originating in the Emergency Department (24,150 in 2008) are reported here as well as in the hospital inpatient utilization report.

Inpatient discharges exclude newborns (MDC 15). 20 ED records with missing or invalid diagnosis codes are excluded from this analysis.

**Table E10**  
**Clinical Classifications Software (CCS) High Level Diagnosis Groups by VT, NH, MA and NY Hospitals**  
**2008 Hospital ED Visits, VT Residents Only**  
**Number of Visits and Column Percents**

	BRAT	CVMC	COPL	DHMC	FAHC	GIFF	GRAC	MT.A	NCTY	NEVT	NWST	PORT	RRMC	SWVT	SPRF	Oth NH	MA	NY	Total
<b>Injury and poisoning</b>																			
Visits	2,941	7,567	4,554	2,913	15,972	1,931	694	1,194	3,474	3,144	8,085	3,852	8,770	4,757	3,679	3,399	741	514	78,181
Col %	31.9	26.7	37.7	23.6	30.0	29.9	31.6	29.9	27.5	29.6	30.2	32.1	29.6	28.4	27.8	28.1	31.9	36.7	29.5
<b>Diseases of the respiratory system</b>																			
Visits	1,174	3,714	1,540	1,272	4,964	842	287	544	1,909	1,511	3,813	1,446	3,580	2,197	1,648	1,943	241	114	32,739
Col %	12.7	13.1	12.7	10.3	9.3	13.0	13.1	13.6	15.1	14.2	14.2	12.0	12.1	13.1	12.4	16.1	10.4	8.1	12.3
<b>Symptoms, signs and ill-defined conditions</b>																			
Visits	652	2,774	1,072	1,294	6,344	508	226	454	1,275	1,116	2,822	1,288	2,890	1,537	1,332	1,054	235	121	26,994
Col %	7.1	9.8	8.9	10.5	11.9	7.9	10.3	11.4	10.1	10.5	10.5	10.7	9.7	9.2	10.1	8.7	10.1	8.6	10.2
<b>Diseases of the nervous system and sense organs</b>																			
Visits	624	2,175	900	1,064	4,114	515	193	295	1,032	1,007	2,273	960	2,672	1,270	964	1,018	203	107	21,386
Col %	6.8	7.7	7.4	8.6	7.7	8.0	8.8	7.4	8.2	9.5	8.5	8.0	9.0	7.6	7.3	8.4	8.7	7.6	8.1
<b>Diseases of the digestive system</b>																			
Visits	884	2,344	903	865	4,125	628	141	268	853	829	2,022	931	2,515	1,433	1,124	974	176	80	21,095
Col %	9.6	8.3	7.5	7.0	7.8	9.7	6.4	6.7	6.7	7.8	7.6	7.8	8.5	8.6	8.5	8.1	7.6	5.7	8.0
<b>Diseases of the circulatory system</b>																			
Visits	610	1,809	603	1,181	4,683	456	156	349	893	678	1,524	837	2,221	1,549	1,158	619	149	135	19,610
Col %	6.6	6.4	5.0	9.6	8.8	7.1	7.1	8.7	7.1	6.4	5.7	7.0	7.5	9.3	8.7	5.1	6.4	9.6	7.4
<b>Musculoskeletal system and connective tissue</b>																			
Visits	531	2,894	775	1,173	2,461	577	148	213	1,018	643	2,093	886	1,786	1,088	676	908	133	65	18,068
Col %	5.8	10.2	6.4	9.5	4.6	8.9	6.7	5.3	8.0	6.1	7.8	7.4	6.0	6.5	5.1	7.5	5.7	4.6	6.8
<b>Diseases of the genitourinary system</b>																			
Visits	380	1,289	560	532	2,516	310	100	193	672	615	1,374	573	1,377	924	711	632	106	62	12,926
Col %	4.1	4.5	4.6	4.3	4.7	4.8	4.6	4.8	5.3	5.8	5.1	4.8	4.6	5.5	5.4	5.2	4.6	4.4	4.9
<b>Mental disorders</b>																			
Visits	649	1,359	302	677	2,899	167	53	137	361	399	619	344	1,343	615	668	266	97	79	11,034
Col %	7.0	4.8	2.5	5.5	5.4	2.6	2.4	3.4	2.9	3.8	2.3	2.9	4.5	3.7	5.0	2.2	4.2	5.6	4.2
<b>Diseases of the skin and subcutaneous tissue</b>																			
Visits	215	1,031	321	396	1,681	190	75	178	435	284	1,019	380	903	503	658	612	89	34	9,004
Col %	2.3	3.6	2.7	3.2	3.2	2.9	3.4	4.5	3.4	2.7	3.8	3.2	3.0	3.0	5.0	5.1	3.8	2.4	3.4
<b>Infectious and parasitic diseases</b>																			
Visits	101	588	192	165	820	132	45	41	211	78	317	148	520	261	185	257	61	30	4,152
Col %	1.1	2.1	1.6	1.3	1.5	2.0	2.1	1.0	1.7	0.7	1.2	1.2	1.8	1.6	1.4	2.1	2.6	2.1	1.6

**Table E10**  
**Clinical Classifications Software (CCS) High Level Diagnosis Groups by VT, NH, MA and NY Hospitals**  
**2008 Hospital ED Visits, VT Residents Only**  
**Number of Visits and Column Percents**

	BRAT	CVMC	COPL	DHMC	FAHC	GIFF	GRAC	MT.A	NCTY	NEVT	NWST	PORT	RRMC	SWVT	SPRF	Oth NH	MA	NY	Total
Endocrine, nutritional, metabolic and immunity disorders																			
Visits	215	325	138	159	880	87	44	69	179	115	358	168	423	256	161	154	31	16	3,778
Col %	2.3	1.1	1.1	1.3	1.7	1.3	2.0	1.7	1.4	1.1	1.3	1.4	1.4	1.5	1.2	1.3	1.3	1.1	1.4
Contraception and complications of pregnancy and childbirth																			
Visits	90	127	93	52	808	27	3	8	130	48	118	57	269	95	107	114	23	12	2,181
Col %	1.0	0.4	0.8	0.4	1.5	0.4	0.1	0.2	1.0	0.5	0.4	0.5	0.9	0.6	0.8	0.9	1.0	0.9	0.8
Residual codes, unclassified, all Ecodes																			
Visits	63	182	92	387	427	54	17	31	129	93	184	83	197	115	96	82	25	15	2,272
Col %	0.7	0.6	0.8	3.1	0.8	0.8	0.8	0.8	1.0	0.9	0.7	0.7	0.7	0.7	0.7	0.7	1.1	1.1	0.9
Neoplasms																			
Visits	46	79	13	121	256	7	1	13	31	28	43	19	99	55	39	19	8	9	886
Col %	0.5	0.3	0.1	1.0	0.5	0.1	0.0	0.3	0.2	0.3	0.2	0.2	0.3	0.3	0.3	0.2	0.3	0.6	0.3
Diseases of the blood and blood-forming organs																			
Visits	25	60	19	40	160	18	4	9	30	23	63	22	64	58	25	17	5	5	647
Col %	0.3	0.2	0.2	0.3	0.3	0.3	0.2	0.2	0.2	0.2	0.2	0.2	0.2	0.3	0.2	0.1	0.2	0.4	0.2
Conditions originating in the perinatal period																			
Visits	9	19	15	15	53	7	5	3	7	11	27	6	31	19	5	10	0	0	242
Col %	0.1	0.1	0.1	0.1	0.1	0.1	0.2	0.1	0.1	0.1	0.1	0.0	0.1	0.1	0.0	0.1	0.0	0.0	0.1
Congenital anomalies																			
Visits	4	8	0	17	32	8	1	0	10	0	4	2	11	6	2	2	0	1	108
Col %	0.0	0.0	0.0	0.1	0.1	0.1	0.0	0.0	0.1	0.0	0.0	0.0	0.0	0.0	0.0	0.0	0.0	0.1	0.0
Total																			
Visits	9,213	28,344	12,092	12,323	53,195	6,464	2,193	3,999	12,649	10,622	26,758	12,002	29,671	16,738	13,238	12,080	2,323	1,399	265,303
Col %	100	100	100	100	100	100	100	100	100	100	100	100	100	100	100	100	100	100	100

Massachusetts hospital data provided by the Massachusetts Division of Health Care Finance and Policy.

New Hampshire hospital data provided by the New Hampshire Department of Health and Human Services.

New York hospital data provided by the New York Department of Health.

Emergency department visits include all hospital records (outpatient and inpatient) which originated in the ED.

Inpatient discharges originating in the Emergency Department are reported here as well as in the hospital inpatient utilization report.

Inpatient discharges exclude newborns (MDC 15). 20 ED records with missing or invalid diagnosis codes are excluded from this analysis.

**Table E11a**  
**Patient Origin Report, ED Visits Not Admitted**  
**by Hospital Service Area, 2008**  
**Row Percents**

HOSPITAL SERVICE AREA	BRAT	CVMC	COPL	DHMC	FAHC	GIFF	GRAC	MT.A	NCTY	NEVT	NWST	PORT	RRMC	SWVT	SPRF	nonVT	TOTAL
BARRE	31	24,284	324	360	1,026	813	3	11	32	140	44	31	74	3	7	503	27,686
(%)	0.1	87.7	1.2	1.3	3.7	2.9	0.0	0.0	0.1	0.5	0.2	0.1	0.3	0.0	0.0	1.8	100.0
BENNINGTON	474	20	4	38	42	12	119	1	7	2	7	12	450	14,141	26	1,102	16,457
(%)	2.9	0.1	0.0	0.2	0.3	0.1	0.7	0.0	0.0	0.0	0.0	0.1	2.7	85.9	0.2	6.7	100.0
BRATTLEBORO	7,437	9	10	114	41	7	1,609	10	8	5	5	4	48	16	470	578	10,371
(%)	71.7	0.1	0.1	1.1	0.4	0.1	15.5	0.1	0.1	0.0	0.0	0.0	0.5	0.2	4.5	5.6	100.0
BURLINGTON	47	267	902	107	40,985	41	1	13	69	51	3,483	778	127	2	20	753	47,646
(%)	0.1	0.6	1.9	0.2	86.0	0.1	0.0	0.0	0.1	0.1	7.3	1.6	0.3	0.0	0.0	1.6	100.0
MIDDLEBURY	8	23	12	31	1,110	15	0	3	4	6	26	9,000	204	0	2	171	10,615
(%)	0.1	0.2	0.1	0.3	10.5	0.1	0.0	0.0	0.0	0.1	0.2	84.8	1.9	0.0	0.0	1.6	100.0
MORRISVILLE	3	467	10,137	42	465	10	1	0	101	215	65	10	24	0	1	126	11,667
(%)	0.0	4.0	86.9	0.4	4.0	0.1	0.0	0.0	0.9	1.8	0.6	0.1	0.2	0.0	0.0	1.1	100.0
NEWPORT	11	40	304	125	137	9	0	5	11,926	495	33	4	16	0	4	1,042	14,151
(%)	0.1	0.3	2.1	0.9	1.0	0.1	0.0	0.0	84.3	3.5	0.2	0.0	0.1	0.0	0.0	7.4	100.0
RANDOLPH	7	314	11	463	51	3,992	0	8	4	7	7	77	125	0	6	144	5,216
(%)	0.1	6.0	0.2	8.9	1.0	76.5	0.0	0.2	0.1	0.1	0.1	1.5	2.4	0.0	0.1	2.8	100.0
RUTLAND	37	22	7	337	281	66	4	17	9	7	19	1,837	24,268	40	132	419	27,502
(%)	0.1	0.1	0.0	1.2	1.0	0.2	0.0	0.1	0.0	0.0	0.1	6.7	88.2	0.1	0.5	1.5	100.0
SPRINGFIELD	260	8	5	574	42	7	443	597	2	4	4	13	317	38	11,026	786	14,126
(%)	1.8	0.1	0.0	4.1	0.3	0.0	3.1	4.2	0.0	0.0	0.0	0.1	2.2	0.3	78.1	5.6	100.0
ST ALBANS	10	39	103	15	1,511	13	1	1	56	9	21,945	17	31	0	9	173	23,933
(%)	0.0	0.2	0.4	0.1	6.3	0.1	0.0	0.0	0.2	0.0	91.7	0.1	0.1	0.0	0.0	0.7	100.0
ST JOHNSBURY	5	108	48	229	59	11	3	4	109	9,101	9	2	10	0	4	1,833	11,535
(%)	0.0	0.9	0.4	2.0	0.5	0.1	0.0	0.0	0.9	78.9	0.1	0.0	0.1	0.0	0.0	15.9	100.0
WHITE RIVER JCT	28	282	15	7,488	65	857	5	3,269	18	198	6	11	193	0	237	7,172	19,844
(%)	0.1	1.4	0.1	37.7	0.3	4.3	0.0	16.5	0.1	1.0	0.0	0.1	1.0	0.0	1.2	36.1	100.0
Total	8,358	25,883	11,882	9,923	45,815	5,853	2,189	3,939	12,345	10,240	25,653	11,796	25,887	14,240	11,944	14,802	240,749
(%)	3.5	10.8	4.9	4.1	19.0	2.4	0.9	1.6	5.1	4.3	10.7	4.9	10.8	5.9	5.0	6.1	100.0

Column headers denote hospitals, key to hospital abbreviations can be found in Appendix E4.



**Table E11b**  
**Patient Origin Report, ED Visits Not Admitted**  
**by Hospital Service Area and Ziptown, 2008**  
**Row Percents**

BARRE ZIP TOWN	BRAT	CVMC	COPL	DHMC	FAHC	GIFF	GRAC	MT.A	NCTY	NEVT	NWST	PORT	RRMC	SWVT	SPRF	nonVT	TOTAL
Calais + (%)	2 0.2	844 83.2	92 9.1	12 1.2	24 2.4	5 0.5	0 0.0	0 0.0	1 0.1	13 1.3	0 0.0	3 0.3	1 0.1	0 0.0	0 0.0	17 1.7	1,014 100.0
Marshfield + (%)	0 0.0	671 81.4	31 3.8	14 1.7	15 1.8	4 0.5	0 0.0	0 0.0	3 0.4	74 9.0	0 0.0	0 0.0	0 0.0	0 0.0	0 0.0	12 1.5	824 100.0
Montpelier + (%)	24 0.1	16,034 93.5	68 0.4	142 0.8	362 2.1	200 1.2	1 0.0	5 0.0	19 0.1	40 0.2	23 0.1	13 0.1	39 0.2	0 0.0	1 0.0	178 1.0	17,149 100.0
Moretown (%)	0 0.0	253 81.1	3 1.0	4 1.3	30 9.6	7 2.2	0 0.0	0 0.0	0 0.0	0 0.0	1 0.3	1 0.3	0 0.0	0 0.0	0 0.0	13 4.2	312 100.0
Northfield + (%)	2 0.1	1,656 76.4	11 0.5	33 1.5	55 2.5	349 16.1	1 0.0	2 0.1	1 0.0	0 0.0	4 0.2	5 0.2	6 0.3	0 0.0	0 0.0	42 1.9	2,167 100.0
Plainfield (%)	0 0.0	694 91.0	6 0.8	7 0.9	18 2.4	13 1.7	0 0.0	2 0.3	0 0.0	1 0.1	1 0.1	0 0.0	6 0.8	0 0.0	0 0.0	15 2.0	763 100.0
Topsham (%)	0 0.0	240 48.2	1 0.2	91 18.3	5 1.0	3 0.6	0 0.0	1 0.2	0 0.0	1 0.2	0 0.0	0 0.0	0 0.0	0 0.0	2 0.4	154 30.9	498 100.0
Waitsfield + (%)	0 0.0	691 76.6	4 0.4	11 1.2	112 12.4	35 3.9	0 0.0	0 0.0	0 0.0	2 0.2	0 0.0	6 0.7	6 0.7	0 0.0	0 0.0	35 3.9	902 100.0
Waterbury + (%)	3 0.2	1,322 70.7	106 5.7	13 0.7	351 18.8	14 0.7	0 0.0	0 0.0	4 0.2	7 0.4	13 0.7	2 0.1	6 0.3	3 0.2	3 0.2	22 1.2	1,869 100.0
Williamston + (%)	0 0.0	1,879 85.9	2 0.1	33 1.5	54 2.5	183 8.4	1 0.0	1 0.0	4 0.2	2 0.1	2 0.1	1 0.0	10 0.5	0 0.0	1 0.0	15 0.7	2,188 100.0
AREA TOTAL (%)	31 0.1	24,284 87.7	324 1.2	360 1.3	1,026 3.7	813 2.9	3 0.0	11 0.0	32 0.1	140 0.5	44 0.2	31 0.1	74 0.3	3 0.0	7 0.0	503 1.8	27,686 100.0

**Table E11b**  
**Patient Origin Report, ED Visits Not Admitted**  
**by Hospital Service Area and Ziptown, 2008**  
**Row Percents**

BENNINGTON ZIP TOWN	BRAT	CVMC	COPL	DHMC	FAHC	GIFF	GRAC	MT.A	NCTY	NEVT	NWST	PORT	RRMC	SWVT	SPRF	nonVT	TOTAL
Arlington + (%)	1 0.1	1 0.1	0 0.0	4 0.4	6 0.7	4 0.4	1 0.1	0 0.0	0 0.0	0 0.0	0 0.0	4 0.4	20 2.2	804 90.3	1 0.1	44 4.9	890 100.0
Bennington + (%)	13 0.1	9 0.1	1 0.0	11 0.1	26 0.2	3 0.0	6 0.0	0 0.0	4 0.0	2 0.0	5 0.0	5 0.0	60 0.5	11,723 95.0	6 0.0	464 3.8	12,338 100.0
Dorset + (%)	0 0.0	0 0.0	0 0.0	5 1.2	4 0.9	0 0.0	2 0.5	0 0.0	0 0.0	0 0.0	1 0.2	0 0.0	152 36.0	235 55.7	0 0.0	23 5.5	422 100.0
Dover + (%)	145 42.2	0 0.0	1 0.3	2 0.6	1 0.3	0 0.0	82 23.8	0 0.0	0 0.0	0 0.0	0 0.0	0 0.0	1 0.3	97 28.2	4 1.2	11 3.2	344 100.0
Manchester (%)	6 0.5	2 0.2	2 0.2	9 0.8	3 0.3	1 0.1	6 0.5	1 0.1	1 0.1	0 0.0	0 0.0	1 0.1	213 18.6	849 74.1	11 1.0	41 3.6	1,146 100.0
Readsboro + (%)	7 1.3	0 0.0	0 0.0	1 0.2	1 0.2	0 0.0	1 0.2	0 0.0	0 0.0	0 0.0	0 0.0	1 0.2	1 0.2	89 17.1	1 0.2	419 80.4	521 100.0
Whitingham (%)	125 40.8	1 0.3	0 0.0	1 0.3	1 0.3	1 0.3	1 0.3	0 0.0	1 0.3	0 0.0	1 0.3	1 0.3	1 0.3	117 38.2	1 0.3	54 17.6	306 100.0
Wilmington + (%)	177 36.1	7 1.4	0 0.0	5 1.0	0 0.0	3 0.6	20 4.1	0 0.0	1 0.2	0 0.0	0 0.0	0 0.0	2 0.4	227 46.3	2 0.4	46 9.4	490 100.0
AREA TOTAL (%)	474 2.9	20 0.1	4 0.0	38 0.2	42 0.3	12 0.1	119 0.7	1 0.0	7 0.0	2 0.0	7 0.0	12 0.1	450 2.7	14,141 85.9	26 0.2	1,102 6.7	16,457 100.0

**Table E11b**  
**Patient Origin Report, ED Visits Not Admitted**  
**by Hospital Service Area and Ziptown, 2008**  
**Row Percents**

BRATTLEBORO																	
ZIP TOWN	BRAT	CVMC	COPL	DHMC	FAHC	GIFF	GRAC	MT.A	NCTY	NEVT	NWST	PORT	RRMC	SWVT	SPRF	nonVT	TOTAL
Brattleboro +	5,729	3	6	56	30	3	133	3	4	3	0	2	16	15	30	311	6,344
(%)	90.3	0.0	0.1	0.9	0.5	0.0	2.1	0.0	0.1	0.0	0.0	0.0	0.3	0.2	0.5	4.9	100.0
Jamaica +	75	3	1	9	4	2	496	0	0	0	1	0	19	0	44	16	670
(%)	11.2	0.4	0.1	1.3	0.6	0.3	74.0	0.0	0.0	0.0	0.1	0.0	2.8	0.0	6.6	2.4	100.0
Newfane +	327	1	0	16	1	0	906	2	2	1	0	0	3	1	31	35	1,326
(%)	24.7	0.1	0.0	1.2	0.1	0.0	68.3	0.2	0.2	0.1	0.0	0.0	0.2	0.1	2.3	2.6	100.0
Vernon	468	0	2	3	2	1	15	0	1	0	3	0	1	0	2	62	560
(%)	83.6	0.0	0.4	0.5	0.4	0.2	2.7	0.0	0.2	0.0	0.5	0.0	0.2	0.0	0.4	11.1	100.0
Westminster +	838	2	1	30	4	1	59	5	1	1	1	2	9	0	363	154	1,471
(%)	57.0	0.1	0.1	2.0	0.3	0.1	4.0	0.3	0.1	0.1	0.1	0.1	0.6	0.0	24.7	10.5	100.0
AREA TOTAL	7,437	9	10	114	41	7	1,609	10	8	5	5	4	48	16	470	578	10,371
(%)	71.7	0.1	0.1	1.1	0.4	0.1	15.5	0.1	0.1	0.0	0.0	0.0	0.5	0.2	4.5	5.6	100.0
BURLINGTON																	
ZIP TOWN	BRAT	CVMC	COPL	DHMC	FAHC	GIFF	GRAC	MT.A	NCTY	NEVT	NWST	PORT	RRMC	SWVT	SPRF	nonVT	TOTAL
Burlington	18	49	38	23	14,208	8	1	2	9	11	96	54	36	2	5	165	14,725
(%)	0.1	0.3	0.3	0.2	96.5	0.1	0.0	0.0	0.1	0.1	0.7	0.4	0.2	0.0	0.0	1.1	100.0
Cambridge +	0	15	738	7	364	1	0	1	5	3	318	3	2	0	0	13	1,470
(%)	0.0	1.0	50.2	0.5	24.8	0.1	0.0	0.1	0.3	0.2	21.6	0.2	0.1	0.0	0.0	0.9	100.0
Charlotte	3	3	1	1	546	1	0	0	1	2	4	27	6	0	0	26	621
(%)	0.5	0.5	0.2	0.2	87.9	0.2	0.0	0.0	0.2	0.3	0.6	4.3	1.0	0.0	0.0	4.2	100.0
Colchester	1	22	8	12	4,042	3	0	1	4	4	76	13	8	0	3	77	4,274
(%)	0.0	0.5	0.2	0.3	94.6	0.1	0.0	0.0	0.1	0.1	1.8	0.3	0.2	0.0	0.1	1.8	100.0
Essex	4	31	10	8	3,592	8	0	3	16	8	63	9	9	0	1	95	3,857
(%)	0.1	0.8	0.3	0.2	93.1	0.2	0.0	0.1	0.4	0.2	1.6	0.2	0.2	0.0	0.0	2.5	100.0
Fairfax	2	4	6	2	302	0	0	0	4	2	1,098	3	6	0	0	12	1,441
(%)	0.1	0.3	0.4	0.1	21.0	0.0	0.0	0.0	0.3	0.1	76.2	0.2	0.4	0.0	0.0	0.8	100.0
Ferrisburgh	0	2	1	3	316	0	0	0	0	0	3	333	3	0	0	12	673
(%)	0.0	0.3	0.1	0.4	47.0	0.0	0.0	0.0	0.0	0.0	0.4	49.5	0.4	0.0	0.0	1.8	100.0

**Table E11b**  
**Patient Origin Report, ED Visits Not Admitted**  
**by Hospital Service Area and Ziptown, 2008**  
**Row Percents**

BURLINGTON ZIP TOWN	BRAT	CVMC	COPL	DHMC	FAHC	GIFF	GRAC	MT.A	NCTY	NEVT	NWST	PORT	RRMC	SWVT	SPRF	nonVT	TOTAL
Grand Isle + (%)	0 0.0	7 0.9	2 0.3	3 0.4	571 76.1	0 0.0	0 0.0	0 0.0	1 0.1	1 0.1	152 20.3	2 0.3	0 0.0	0 0.0	0 0.0	11 1.5	750 100.0
Hinesburg (%)	1 0.1	14 1.3	8 0.8	1 0.1	949 90.6	2 0.2	0 0.0	0 0.0	1 0.1	1 0.1	10 1.0	33 3.1	2 0.2	0 0.0	0 0.0	26 2.5	1,048 100.0
Huntington + (%)	0 0.0	11 1.5	5 0.7	1 0.1	516 68.3	4 0.5	0 0.0	0 0.0	1 0.1	2 0.3	5 0.7	187 24.8	2 0.3	0 0.0	6 0.8	15 2.0	755 100.0
Jericho + (%)	1 0.1	17 1.2	35 2.6	4 0.3	1,169 85.7	5 0.4	0 0.0	0 0.0	3 0.2	2 0.1	69 5.1	10 0.7	8 0.6	0 0.0	0 0.0	41 3.0	1,364 100.0
Milton (%)	2 0.0	9 0.2	8 0.2	14 0.3	2,782 65.3	2 0.0	0 0.0	2 0.0	8 0.2	5 0.1	1,367 32.1	9 0.2	11 0.3	0 0.0	1 0.0	43 1.0	4,263 100.0
Monkton (%)	0 0.0	2 2.7	0 0.0	0 0.0	19 26.0	0 0.0	0 0.0	0 0.0	0 0.0	0 0.0	1 1.4	46 63.0	4 5.5	0 0.0	0 0.0	1 1.4	73 100.0
Richmond (%)	0 0.0	15 1.8	7 0.8	2 0.2	768 91.4	3 0.4	0 0.0	0 0.0	2 0.2	0 0.0	0 0.0	4 0.5	4 0.5	0 0.0	1 0.1	34 4.0	840 100.0
S. Burlington (%)	1 0.0	24 0.6	21 0.5	9 0.2	3,924 95.3	0 0.0	0 0.0	2 0.0	4 0.1	4 0.1	28 0.7	14 0.3	8 0.2	0 0.0	0 0.0	77 1.9	4,116 100.0
Shelburne (%)	3 0.2	3 0.2	0 0.0	3 0.2	1,432 94.9	0 0.0	0 0.0	0 0.0	3 0.2	0 0.0	11 0.7	14 0.9	6 0.4	0 0.0	1 0.1	33 2.2	1,509 100.0
South Hero (%)	0 0.0	3 0.8	0 0.0	0 0.0	334 84.1	1 0.3	0 0.0	0 0.0	1 0.3	0 0.0	51 12.8	1 0.3	1 0.3	0 0.0	0 0.0	5 1.3	397 100.0
Westford (%)	1 0.4	1 0.4	2 0.7	0 0.0	197 73.5	0 0.0	0 0.0	0 0.0	0 0.0	1 0.4	60 22.4	1 0.4	0 0.0	0 0.0	0 0.0	5 1.9	268 100.0
Williston + (%)	9 0.4	23 1.1	7 0.3	8 0.4	1,926 93.4	3 0.1	0 0.0	1 0.0	3 0.1	1 0.0	33 1.6	8 0.4	3 0.1	0 0.0	2 0.1	36 1.7	2,063 100.0
Winooski (%)	1 0.0	12 0.4	5 0.2	6 0.2	3,028 96.5	0 0.0	0 0.0	1 0.0	3 0.1	4 0.1	38 1.2	7 0.2	8 0.3	0 0.0	0 0.0	26 0.8	3,139 100.0
AREA TOTAL (%)	47 0.1	267 0.6	902 1.9	107 0.2	40,985 86.0	41 0.1	1 0.0	13 0.0	69 0.1	51 0.1	3,483 7.3	778 1.6	127 0.3	2 0.0	20 0.0	753 1.6	47,646 100.0

**Table E11b**  
**Patient Origin Report, ED Visits Not Admitted**  
**by Hospital Service Area and Ziptown, 2008**  
**Row Percents**

MIDDLEBURY																	
ZIP TOWN	BRAT	CVMC	COPL	DHMC	FAHC	GIFF	GRAC	MT.A	NCTY	NEVT	NWST	PORT	RRMC	SWVT	SPRF	nonVT	TOTAL
Bridport	0	2	1	1	29	0	0	0	0	0	3	410	13	0	0	16	475
(%)	0.0	0.4	0.2	0.2	6.1	0.0	0.0	0.0	0.0	0.0	0.6	86.3	2.7	0.0	0.0	3.4	100.0
Bristol +	0	7	5	4	387	3	0	1	1	1	10	1,601	10	0	0	27	2,057
(%)	0.0	0.3	0.2	0.2	18.8	0.1	0.0	0.0	0.0	0.0	0.5	77.8	0.5	0.0	0.0	1.3	100.0
Middlebury +	6	5	4	13	174	2	0	0	1	2	4	4,045	61	0	2	54	4,373
(%)	0.1	0.1	0.1	0.3	4.0	0.0	0.0	0.0	0.0	0.0	0.1	92.5	1.4	0.0	0.0	1.2	100.0
New Haven	0	0	1	3	65	5	0	0	0	1	0	456	4	0	0	10	545
(%)	0.0	0.0	0.2	0.6	11.9	0.9	0.0	0.0	0.0	0.2	0.0	83.7	0.7	0.0	0.0	1.8	100.0
Orwell	0	0	0	1	8	2	0	1	0	0	0	288	49	0	0	7	356
(%)	0.0	0.0	0.0	0.3	2.2	0.6	0.0	0.3	0.0	0.0	0.0	80.9	13.8	0.0	0.0	2.0	100.0
Shoreham +	2	0	0	3	24	1	0	1	1	0	1	630	53	0	0	23	739
(%)	0.3	0.0	0.0	0.4	3.2	0.1	0.0	0.1	0.1	0.0	0.1	85.3	7.2	0.0	0.0	3.1	100.0
Vergennes +	0	9	1	6	423	2	0	0	1	2	8	1,570	14	0	0	34	2,070
(%)	0.0	0.4	0.0	0.3	20.4	0.1	0.0	0.0	0.0	0.1	0.4	75.8	0.7	0.0	0.0	1.6	100.0
AREA TOTAL	8	23	12	31	1,110	15	0	3	4	6	26	9,000	204	0	2	171	10,615
(%)	0.1	0.2	0.1	0.3	10.5	0.1	0.0	0.0	0.0	0.1	0.2	84.8	1.9	0.0	0.0	1.6	100.0
MORRISVILLE																	
ZIP TOWN	BRAT	CVMC	COPL	DHMC	FAHC	GIFF	GRAC	MT.A	NCTY	NEVT	NWST	PORT	RRMC	SWVT	SPRF	nonVT	TOTAL
Craftsbury	0	8	342	2	11	1	0	0	38	8	0	0	1	0	0	3	414
(%)	0.0	1.9	82.6	0.5	2.7	0.2	0.0	0.0	9.2	1.9	0.0	0.0	0.2	0.0	0.0	0.7	100.0
Eden +	0	13	814	0	69	0	0	0	8	0	19	4	3	0	0	11	941
(%)	0.0	1.4	86.5	0.0	7.3	0.0	0.0	0.0	0.9	0.0	2.0	0.4	0.3	0.0	0.0	1.2	100.0
Hardwick +	1	290	1,480	20	42	5	1	0	26	177	3	4	4	0	1	11	2,065
(%)	0.0	14.0	71.7	1.0	2.0	0.2	0.0	0.0	1.3	8.6	0.1	0.2	0.2	0.0	0.0	0.5	100.0
Hyde Park	0	20	1,204	0	47	2	0	0	7	6	5	0	1	0	0	12	1,304
(%)	0.0	1.5	92.3	0.0	3.6	0.2	0.0	0.0	0.5	0.5	0.4	0.0	0.1	0.0	0.0	0.9	100.0
Johnson	0	20	1,371	6	79	0	0	0	6	4	21	1	7	0	0	7	1,522
(%)	0.0	1.3	90.1	0.4	5.2	0.0	0.0	0.0	0.4	0.3	1.4	0.1	0.5	0.0	0.0	0.5	100.0
Morrisville +	1	56	3,400	9	101	1	0	0	12	17	7	0	4	0	0	33	3,641
(%)	0.0	1.5	93.4	0.2	2.8	0.0	0.0	0.0	0.3	0.5	0.2	0.0	0.1	0.0	0.0	0.9	100.0

**Table E11b**  
**Patient Origin Report, ED Visits Not Admitted**  
**by Hospital Service Area and Ziptown, 2008**  
**Row Percents**

MORRISVILLE																	
ZIP TOWN	BRAT	CVMC	COPL	DHMC	FAHC	GIFF	GRAC	MT.A	NCTY	NEVT	NWST	PORT	RRMC	SWVT	SPRF	nonVT	TOTAL
Stowe	1	60	1,526	5	116	1	0	0	4	3	10	1	4	0	0	49	1,780
(%)	0.1	3.4	85.7	0.3	6.5	0.1	0.0	0.0	0.2	0.2	0.6	0.1	0.2	0.0	0.0	2.8	100.0
AREA TOTAL	3	467	10,137	42	465	10	1	0	101	215	65	10	24	0	1	126	11,667
(%)	0.0	4.0	86.9	0.4	4.0	0.1	0.0	0.0	0.9	1.8	0.6	0.1	0.2	0.0	0.0	1.1	100.0
NEWPORT																	
ZIP TOWN	BRAT	CVMC	COPL	DHMC	FAHC	GIFF	GRAC	MT.A	NCTY	NEVT	NWST	PORT	RRMC	SWVT	SPRF	nonVT	TOTAL
Barton +	2	16	34	31	26	0	0	5	2,302	274	2	0	1	0	2	40	2,735
(%)	0.1	0.6	1.2	1.1	1.0	0.0	0.0	0.2	84.2	10.0	0.1	0.0	0.0	0.0	0.1	1.5	100.0
Canaan +	0	0	1	7	2	1	0	0	34	1	0	0	1	0	0	854	901
(%)	0.0	0.0	0.1	0.8	0.2	0.1	0.0	0.0	3.8	0.1	0.0	0.0	0.1	0.0	0.0	94.8	100.0
Irasburg +	0	8	83	3	8	0	0	0	554	38	1	0	0	0	0	6	701
(%)	0.0	1.1	11.8	0.4	1.1	0.0	0.0	0.0	79.0	5.4	0.1	0.0	0.0	0.0	0.0	0.9	100.0
Island Pond +	2	2	3	12	12	0	0	0	920	72	2	0	2	0	0	40	1,067
(%)	0.2	0.2	0.3	1.1	1.1	0.0	0.0	0.0	86.2	6.7	0.2	0.0	0.2	0.0	0.0	3.7	100.0
Lowell +	0	0	133	5	24	0	0	0	422	11	3	1	2	0	0	3	604
(%)	0.0	0.0	22.0	0.8	4.0	0.0	0.0	0.0	69.9	1.8	0.5	0.2	0.3	0.0	0.0	0.5	100.0
Newport +	5	12	34	59	46	8	0	0	6,749	91	17	3	8	0	1	87	7,120
(%)	0.1	0.2	0.5	0.8	0.6	0.1	0.0	0.0	94.8	1.3	0.2	0.0	0.1	0.0	0.0	1.2	100.0
Troy +	2	2	16	8	19	0	0	0	945	8	8	0	2	0	1	12	1,023
(%)	0.2	0.2	1.6	0.8	1.9	0.0	0.0	0.0	92.4	0.8	0.8	0.0	0.2	0.0	0.1	1.2	100.0
AREA TOTAL	11	40	304	125	137	9	0	5	11,926	495	33	4	16	0	4	1,042	14,151
(%)	0.1	0.3	2.1	0.9	1.0	0.1	0.0	0.0	84.3	3.5	0.2	0.0	0.1	0.0	0.0	7.4	100.0

**Table E11b**  
**Patient Origin Report, ED Visits Not Admitted**  
**by Hospital Service Area and Ziptown, 2008**  
**Row Percents**

RANDOLPH																	
ZIP TOWN	BRAT	CVMC	COPL	DHMC	FAHC	GIFF	GRAC	MT.A	NCTY	NEVT	NWST	PORT	RRMC	SWVT	SPRF	nonVT	TOTAL
Bethel +	1	17	4	181	2	752	0	3	0	1	0	0	6	0	3	52	1,022
(%)	0.1	1.7	0.4	17.7	0.2	73.6	0.0	0.3	0.0	0.1	0.0	0.0	0.6	0.0	0.3	5.1	100.0
Brookfield	0	86	0	10	2	192	0	0	0	0	0	0	1	0	0	2	293
(%)	0.0	29.4	0.0	3.4	0.7	65.5	0.0	0.0	0.0	0.0	0.0	0.0	0.3	0.0	0.0	0.7	100.0
Chelsea	0	74	0	58	6	300	0	0	3	0	1	0	1	0	1	15	459
(%)	0.0	16.1	0.0	12.6	1.3	65.4	0.0	0.0	0.7	0.0	0.2	0.0	0.2	0.0	0.2	3.3	100.0
Pittsfield +	0	1	0	38	4	152	0	1	0	1	2	10	70	0	1	9	289
(%)	0.0	0.3	0.0	13.1	1.4	52.6	0.0	0.3	0.0	0.3	0.7	3.5	24.2	0.0	0.3	3.1	100.0
Randolph +	4	112	6	143	29	2,206	0	4	1	5	2	7	9	0	1	58	2,587
(%)	0.2	4.3	0.2	5.5	1.1	85.3	0.0	0.2	0.0	0.2	0.1	0.3	0.3	0.0	0.0	2.2	100.0
Rochester +	2	24	1	33	8	390	0	0	0	0	2	60	38	0	0	8	566
(%)	0.4	4.2	0.2	5.8	1.4	68.9	0.0	0.0	0.0	0.0	0.4	10.6	6.7	0.0	0.0	1.4	100.0
AREA TOTAL	7	314	11	463	51	3,992	0	8	4	7	7	77	125	0	6	144	5,216
(%)	0.1	6.0	0.2	8.9	1.0	76.5	0.0	0.2	0.1	0.1	0.1	1.5	2.4	0.0	0.1	2.8	100.0
RUTLAND																	
ZIP TOWN	BRAT	CVMC	COPL	DHMC	FAHC	GIFF	GRAC	MT.A	NCTY	NEVT	NWST	PORT	RRMC	SWVT	SPRF	nonVT	TOTAL
Brandon +	4	2	2	19	53	7	0	0	0	0	2	1,384	1,088	0	1	28	2,590
(%)	0.2	0.1	0.1	0.7	2.0	0.3	0.0	0.0	0.0	0.0	0.1	53.4	42.0	0.0	0.0	1.1	100.0
Clarendon +	1	2	0	21	14	3	0	3	0	0	0	6	1,364	0	7	13	1,434
(%)	0.1	0.1	0.0	1.5	1.0	0.2	0.0	0.2	0.0	0.0	0.0	0.4	95.1	0.0	0.5	0.9	100.0
Danby +	1	0	0	7	2	0	0	0	0	0	0	0	444	0	1	7	462
(%)	0.2	0.0	0.0	1.5	0.4	0.0	0.0	0.0	0.0	0.0	0.0	0.0	96.1	0.0	0.2	1.5	100.0
Fair Haven +	1	1	3	39	33	3	1	0	2	2	4	190	2,642	0	4	54	2,979
(%)	0.0	0.0	0.1	1.3	1.1	0.1	0.0	0.0	0.1	0.1	0.1	6.4	88.7	0.0	0.1	1.8	100.0
Mt. Holly	0	0	0	10	7	1	0	4	0	0	0	0	331	0	70	4	427
(%)	0.0	0.0	0.0	2.3	1.6	0.2	0.0	0.9	0.0	0.0	0.0	0.0	77.5	0.0	16.4	0.9	100.0

**Table E11b**  
**Patient Origin Report, ED Visits Not Admitted**  
**by Hospital Service Area and Ziptown, 2008**  
**Row Percents**

RUTLAND																	
ZIP TOWN	BRAT	CVMC	COPL	DHMC	FAHC	GIFF	GRAC	MT.A	NCTY	NEVT	NWST	PORT	RRMC	SWVT	SPRF	nonVT	TOTAL
Pawlet	0	0	0	2	6	2	0	0	0	0	0	0	253	22	0	42	327
(%)	0.0	0.0	0.0	0.6	1.8	0.6	0.0	0.0	0.0	0.0	0.0	0.0	77.4	6.7	0.0	12.8	100.0
Pittsford +	1	3	0	20	16	4	0	1	0	0	4	74	1,419	0	1	33	1,576
(%)	0.1	0.2	0.0	1.3	1.0	0.3	0.0	0.1	0.0	0.0	0.3	4.7	90.0	0.0	0.1	2.1	100.0
Poultney	1	1	0	14	6	5	1	0	0	0	0	25	814	0	7	33	907
(%)	0.1	0.1	0.0	1.5	0.7	0.6	0.1	0.0	0.0	0.0	0.0	2.8	89.7	0.0	0.8	3.6	100.0
Proctor	0	0	0	8	6	4	0	0	0	0	0	14	686	0	0	12	730
(%)	0.0	0.0	0.0	1.1	0.8	0.5	0.0	0.0	0.0	0.0	0.0	1.9	94.0	0.0	0.0	1.6	100.0
Rutland +	24	12	2	170	112	30	1	7	6	2	7	123	12,360	18	31	141	13,046
(%)	0.2	0.1	0.0	1.3	0.9	0.2	0.0	0.1	0.0	0.0	0.1	0.9	94.7	0.1	0.2	1.1	100.0
Wallingford +	2	0	0	13	9	4	0	1	0	0	2	7	854	0	6	12	910
(%)	0.2	0.0	0.0	1.4	1.0	0.4	0.0	0.1	0.0	0.0	0.2	0.8	93.8	0.0	0.7	1.3	100.0
Wells +	0	0	0	5	2	0	1	0	1	2	0	5	479	0	1	23	519
(%)	0.0	0.0	0.0	1.0	0.4	0.0	0.2	0.0	0.2	0.4	0.0	1.0	92.3	0.0	0.2	4.4	100.0
West Rutland +	2	1	0	9	15	3	0	1	0	1	0	9	1,534	0	3	17	1,595
(%)	0.1	0.1	0.0	0.6	0.9	0.2	0.0	0.1	0.0	0.1	0.0	0.6	96.2	0.0	0.2	1.1	100.0
AREA TOTAL	37	22	7	337	281	66	4	17	9	7	19	1,837	24,268	40	132	419	27,502
(%)	0.1	0.1	0.0	1.2	1.0	0.2	0.0	0.1	0.0	0.0	0.1	6.7	88.2	0.1	0.5	1.5	100.0
SPRINGFIELD																	
ZIP TOWN	BRAT	CVMC	COPL	DHMC	FAHC	GIFF	GRAC	MT.A	NCTY	NEVT	NWST	PORT	RRMC	SWVT	SPRF	nonVT	TOTAL
Cavendish	3	1	1	32	0	0	1	32	0	1	0	3	31	0	335	17	457
(%)	0.7	0.2	0.2	7.0	0.0	0.0	0.2	7.0	0.0	0.2	0.0	0.7	6.8	0.0	73.3	3.7	100.0
Chester +	30	2	0	83	6	2	260	24	0	1	1	0	21	0	1,556	58	2,044
(%)	1.5	0.1	0.0	4.1	0.3	0.1	12.7	1.2	0.0	0.0	0.0	0.0	1.0	0.0	76.1	2.8	100.0
Londonderry +	11	1	1	22	8	0	54	1	0	0	0	6	70	38	392	30	634
(%)	1.7	0.2	0.2	3.5	1.3	0.0	8.5	0.2	0.0	0.0	0.0	0.9	11.0	6.0	61.8	4.7	100.0
Ludlow	5	0	0	43	8	0	4	20	0	0	0	2	131	0	447	44	704
(%)	0.7	0.0	0.0	6.1	1.1	0.0	0.6	2.8	0.0	0.0	0.0	0.3	18.6	0.0	63.5	6.3	100.0



**Table E11b**  
**Patient Origin Report, ED Visits Not Admitted**  
**by Hospital Service Area and Ziptown, 2008**  
**Row Percents**

SPRINGFIELD																	
ZIP TOWN	BRAT	CVMC	COPL	DHMC	FAHC	GIFF	GRAC	MT.A	NCTY	NEVT	NWST	PORT	RRMC	SWVT	SPRF	nonVT	TOTAL
Rockingham	174	3	0	65	1	2	117	18	0	1	0	0	5	0	1,643	247	2,276
(%)	7.6	0.1	0.0	2.9	0.0	0.1	5.1	0.8	0.0	0.0	0.0	0.0	0.2	0.0	72.2	10.9	100.0
Springfield	29	1	3	266	16	2	7	179	2	1	3	2	56	0	6,234	290	7,091
(%)	0.4	0.0	0.0	3.8	0.2	0.0	0.1	2.5	0.0	0.0	0.0	0.0	0.8	0.0	87.9	4.1	100.0
Weathersfield	8	0	0	63	3	1	0	323	0	0	0	0	3	0	419	100	920
(%)	0.9	0.0	0.0	6.8	0.3	0.1	0.0	35.1	0.0	0.0	0.0	0.0	0.3	0.0	45.5	10.9	100.0
AREA TOTAL	260	8	5	574	42	7	443	597	2	4	4	13	317	38	11,026	786	14,126
(%)	1.8	0.1	0.0	4.1	0.3	0.0	3.1	4.2	0.0	0.0	0.0	0.1	2.2	0.3	78.1	5.6	100.0
ST ALBANS																	
ZIP TOWN	BRAT	CVMC	COPL	DHMC	FAHC	GIFF	GRAC	MT.A	NCTY	NEVT	NWST	PORT	RRMC	SWVT	SPRF	nonVT	TOTAL
Alburgh +	5	4	0	0	137	1	0	0	0	1	1,323	1	0	0	3	22	1,497
(%)	0.3	0.3	0.0	0.0	9.2	0.1	0.0	0.0	0.0	0.1	88.4	0.1	0.0	0.0	0.2	1.5	100.0
Bakersfield	1	2	10	0	13	1	0	0	0	0	243	0	0	0	0	2	272
(%)	0.4	0.7	3.7	0.0	4.8	0.4	0.0	0.0	0.0	0.0	89.3	0.0	0.0	0.0	0.0	0.7	100.0
Enosburgh +	0	5	54	1	170	2	1	1	23	4	2,244	3	4	0	0	27	2,539
(%)	0.0	0.2	2.1	0.0	6.7	0.1	0.0	0.0	0.9	0.2	88.4	0.1	0.2	0.0	0.0	1.1	100.0
Fairfield	0	2	8	1	67	1	0	0	1	0	724	0	2	0	1	11	818
(%)	0.0	0.2	1.0	0.1	8.2	0.1	0.0	0.0	0.1	0.0	88.5	0.0	0.2	0.0	0.1	1.3	100.0
Franklin	0	0	1	2	24	0	0	0	1	1	636	0	4	0	0	2	671
(%)	0.0	0.0	0.1	0.3	3.6	0.0	0.0	0.0	0.1	0.1	94.8	0.0	0.6	0.0	0.0	0.3	100.0
Richford +	0	2	6	1	67	0	0	0	19	0	1,330	2	0	0	0	11	1,438
(%)	0.0	0.1	0.4	0.1	4.7	0.0	0.0	0.0	1.3	0.0	92.5	0.1	0.0	0.0	0.0	0.8	100.0
Sheldon	0	1	0	2	52	0	0	0	0	1	910	3	0	0	0	3	972
(%)	0.0	0.1	0.0	0.2	5.3	0.0	0.0	0.0	0.0	0.1	93.6	0.3	0.0	0.0	0.0	0.3	100.0
St. Albans +	4	12	14	3	616	5	0	0	11	2	9,408	6	13	0	2	61	10,157
(%)	0.0	0.1	0.1	0.0	6.1	0.0	0.0	0.0	0.1	0.0	92.6	0.1	0.1	0.0	0.0	0.6	100.0
Swanton +	0	11	10	5	365	3	0	0	1	0	5,127	2	8	0	3	34	5,569
(%)	0.0	0.2	0.2	0.1	6.6	0.1	0.0	0.0	0.0	0.0	92.1	0.0	0.1	0.0	0.1	0.6	100.0
AREA TOTAL	10	39	103	15	1,511	13	1	1	56	9	21,945	17	31	0	9	173	23,933
(%)	0.0	0.2	0.4	0.1	6.3	0.1	0.0	0.0	0.2	0.0	91.7	0.1	0.1	0.0	0.0	0.7	100.0

**Table E11b**  
**Patient Origin Report, ED Visits Not Admitted**  
**by Hospital Service Area and Ziptown, 2008**  
**Row Percents**

ST JOHNSBURY																	
ZIP TOWN	BRAT	CVMC	COPL	DHMC	FAHC	GIFF	GRAC	MT.A	NCTY	NEVT	NWST	PORT	RRMC	SWVT	SPRF	nonVT	TOTAL
Barnet	0	9	1	25	3	1	1	1	4	337	0	0	2	0	1	167	552
(%)	0.0	1.6	0.2	4.5	0.5	0.2	0.2	0.2	0.7	61.1	0.0	0.0	0.4	0.0	0.2	30.3	100.0
Burke +	1	7	2	42	5	3	0	0	29	952	1	0	2	0	1	1,029	2,074
(%)	0.0	0.3	0.1	2.0	0.2	0.1	0.0	0.0	1.4	45.9	0.0	0.0	0.1	0.0	0.0	49.6	100.0
Concord	0	3	3	10	3	4	0	0	1	448	1	0	0	0	0	115	588
(%)	0.0	0.5	0.5	1.7	0.5	0.7	0.0	0.0	0.2	76.2	0.2	0.0	0.0	0.0	0.0	19.6	100.0
Danville +	0	48	22	14	4	1	0	0	11	608	0	0	1	0	0	40	749
(%)	0.0	6.4	2.9	1.9	0.5	0.1	0.0	0.0	1.5	81.2	0.0	0.0	0.1	0.0	0.0	5.3	100.0
Lyndon +	1	10	8	43	14	0	1	1	26	2,462	2	1	1	0	2	114	2,686
(%)	0.0	0.4	0.3	1.6	0.5	0.0	0.0	0.0	1.0	91.7	0.1	0.0	0.0	0.0	0.1	4.2	100.0
Sheffield +	0	4	2	15	2	1	0	1	9	417	0	0	1	0	0	17	469
(%)	0.0	0.9	0.4	3.2	0.4	0.2	0.0	0.2	1.9	88.9	0.0	0.0	0.2	0.0	0.0	3.6	100.0
St. Johnsbury +	3	27	10	80	28	1	1	1	29	3,877	5	1	3	0	0	351	4,417
(%)	0.1	0.6	0.2	1.8	0.6	0.0	0.0	0.0	0.7	87.8	0.1	0.0	0.1	0.0	0.0	7.9	100.0
AREA TOTAL	5	108	48	229	59	11	3	4	109	9,101	9	2	10	0	4	1,833	11,535
(%)	0.0	0.9	0.4	2.0	0.5	0.1	0.0	0.0	0.9	78.9	0.1	0.0	0.1	0.0	0.0	15.9	100.0
WHITE RIVER JCT																	
ZIP TOWN	BRAT	CVMC	COPL	DHMC	FAHC	GIFF	GRAC	MT.A	NCTY	NEVT	NWST	PORT	RRMC	SWVT	SPRF	nonVT	TOTAL
Bradford	2	31	0	374	9	10	0	1	2	10	0	1	4	0	4	827	1,275
(%)	0.2	2.4	0.0	29.3	0.7	0.8	0.0	0.1	0.2	0.8	0.0	0.1	0.3	0.0	0.3	64.9	100.0
Bridgewater +	0	2	1	160	3	1	2	243	1	0	0	1	112	0	77	46	649
(%)	0.0	0.3	0.2	24.7	0.5	0.2	0.3	37.4	0.2	0.0	0.0	0.2	17.3	0.0	11.9	7.1	100.0
Corinth	0	94	0	202	1	7	0	1	0	3	0	0	0	0	1	226	535
(%)	0.0	17.6	0.0	37.8	0.2	1.3	0.0	0.2	0.0	0.6	0.0	0.0	0.0	0.0	0.2	42.2	100.0
Fairlee +	1	22	0	536	1	47	0	4	0	5	0	0	0	0	3	344	963
(%)	0.1	2.3	0.0	55.7	0.1	4.9	0.0	0.4	0.0	0.5	0.0	0.0	0.0	0.0	0.3	35.7	100.0
Grotton +	1	69	2	41	4	0	0	0	2	116	0	0	0	0	0	609	844
(%)	0.1	8.2	0.2	4.9	0.5	0.0	0.0	0.0	0.2	13.7	0.0	0.0	0.0	0.0	0.0	72.2	100.0

**Table E11b**  
**Patient Origin Report, ED Visits Not Admitted**  
**by Hospital Service Area and Ziptown, 2008**  
**Row Percents**

WHITE RIVER JCT ZIP TOWN	BRAT	CVMC	COPL	DHMC	FAHC	GIFF	GRAC	MT.A	NCTY	NEVT	NWST	PORT	RRMC	SWVT	SPRF	nonVT	TOTAL
Hartford + (%)	5 0.1	8 0.2	3 0.1	2,912 56.6	15 0.3	43 0.8	1 0.0	154 3.0	5 0.1	3 0.1	3 0.1	2 0.0	18 0.3	0 0.0	33 0.6	1,944 37.8	5,149 100.0
Hartland (%)	4 0.4	1 0.1	1 0.1	408 36.6	0 0.0	5 0.4	2 0.2	427 38.3	2 0.2	1 0.1	0 0.0	0 0.0	3 0.3	0 0.0	24 2.2	237 21.3	1,115 100.0
Newbury (%)	3 0.2	10 0.8	1 0.1	132 10.1	3 0.2	0 0.0	0 0.0	10 0.8	0 0.0	9 0.7	1 0.1	0 0.0	2 0.2	0 0.0	1 0.1	1,139 86.9	1,311 100.0
Norwich (%)	2 0.3	1 0.1	3 0.4	522 74.3	10 1.4	2 0.3	0 0.0	11 1.6	1 0.1	2 0.3	0 0.0	2 0.3	0 0.0	0 0.0	3 0.4	144 20.5	703 100.0
Royalton (%)	0 0.0	11 1.1	0 0.0	355 35.9	4 0.4	469 47.4	0 0.0	12 1.2	2 0.2	0 0.0	0 0.0	3 0.3	6 0.6	0 0.0	1 0.1	127 12.8	990 100.0
Ryegate (%)	0 0.0	10 1.4	0 0.0	43 6.2	0 0.0	0 0.0	0 0.0	0 0.0	0 0.0	49 7.0	0 0.0	0 0.0	0 0.0	0 0.0	0 0.0	597 85.4	699 100.0
Sharon (%)	1 0.2	2 0.4	0 0.0	256 54.0	1 0.2	76 16.0	0 0.0	0 0.0	0 0.0	0 0.0	0 0.0	0 0.0	6 1.3	0 0.0	2 0.4	130 27.4	474 100.0
Thetford + (%)	3 0.3	3 0.3	2 0.2	654 57.3	5 0.4	26 2.3	0 0.0	16 1.4	2 0.2	0 0.0	1 0.1	0 0.0	1 0.1	0 0.0	6 0.5	423 37.0	1,142 100.0
Tunbridge (%)	0 0.0	14 4.7	0 0.0	83 27.9	1 0.3	154 51.7	0 0.0	0 0.0	0 0.0	0 0.0	0 0.0	1 0.3	2 0.7	0 0.0	1 0.3	42 14.1	298 100.0
Windsor + (%)	4 0.1	3 0.1	1 0.0	342 12.1	5 0.2	1 0.0	0 0.0	2,147 76.2	0 0.0	0 0.0	0 0.0	0 0.0	19 0.7	0 0.0	64 2.3	231 8.2	2,817 100.0
Woodstock (%)	2 0.2	1 0.1	1 0.1	468 53.2	3 0.3	16 1.8	0 0.0	243 27.6	1 0.1	0 0.0	1 0.1	1 0.1	20 2.3	0 0.0	17 1.9	106 12.0	880 100.0
AREA TOTAL (%)	28 0.1	282 1.4	15 0.1	7,488 37.7	65 0.3	857 4.3	5 0.0	3,269 16.5	18 0.1	198 1.0	6 0.0	11 0.1	193 1.0	0 0.0	237 1.2	7,172 36.1	19,844 100.0

**Table E12**  
**Utilization by Hospital Service Area and Clinical Classification Software (CCS) High Level Diagnosis Group**  
**ED Visits Not Admitted, Crude and Age-Adjusted Rates, 2008**

ALL CATEGORIES

Hospital Service Area	ED Visits	ED Visits /1000 Population	Age_Adjusted Visits/1000 Population
Barre	27,686	418.0	422.0
Bennington	16,457	411.3	420.7
Brattleboro	10,371	331.2	337.6
Burlington	47,646	276.9	275.0
Middlebury	10,615	376.4	377.4
Morrisville	11,667	431.9	429.4
Newport	14,151	497.0	498.5
Randolph	5,216	360.2	362.4
Rutland	27,502	428.8	435.6
Springfield	14,126	502.2	513.6
St Albans	23,933	531.7	539.4
St Johnsbury	11,535	418.1	415.0
White River Jct	19,844	408.3	418.5
Totals	240,749	387.5	387.5

INFECTIOUS AND PARASITIC DISEASES

Hospital Service Area	ED Visits	ED Visits /1000 Population	Age_Adjusted Visits/1000 Population
Barre	571	8.6	8.8
Bennington	219	5.5	5.7
Brattleboro	113	3.6	3.8
Burlington	685	4.0	3.8
Middlebury	129	4.6	4.5
Morrisville	193	7.1	7.0
Newport	223	7.8	8.1
Randolph	95	6.6	6.9
Rutland	443	6.9	7.1
Springfield	190	6.8	7.2
St Albans	276	6.1	6.1
St Johnsbury	119	4.3	4.3
White River Jct	327	6.7	7.0
Totals	3,583	5.8	5.8

**Table E12**  
**Utilization by Hospital Service Area and Clinical Classification Software (CCS) High Level Diagnosis Group**  
**ED Visits Not Admitted, Crude and Age-Adjusted Rates, 2008**

NEOPLASMS			
Hospital Service Area	ED Visits	ED Visits /1000 Population	Age_Adjusted Visits/1000 Population
Barre	31	0.5	0.5
Bennington	15	0.4	0.3
Brattleboro	19	0.6	0.6
Burlington	51	0.3	0.3
Middlebury	19	0.7	0.7
Morrisville	9	0.3	0.3
Newport	28	1.0	0.9
Randolph	7	0.5	0.5
Rutland	17	0.3	0.3
Springfield	22	0.8	0.7
St Albans	27	0.6	0.7
St Johnsbury	18	0.7	0.6
White River Jct	27	0.6	0.5
Totals	290	0.5	0.5
ENDOCRINE, NUTRITIONAL, METABOLIC, IMMUNITY			
Hospital Service Area	ED Visits	ED Visits /1000 Population	Age_Adjusted Visits/1000 Population
Barre	253	3.8	3.8
Bennington	183	4.6	4.4
Brattleboro	193	6.2	6.0
Burlington	596	3.5	3.8
Middlebury	140	5.0	5.2
Morrisville	110	4.1	4.1
Newport	185	6.5	6.2
Randolph	44	3.0	3.0
Rutland	261	4.1	3.9
Springfield	162	5.8	5.3
St Albans	277	6.2	6.7
St Johnsbury	135	4.9	4.8
White River Jct	228	4.7	4.6
Totals	2,767	4.5	4.5

**Table E12**  
**Utilization by Hospital Service Area and Clinical Classification Software (CCS) High Level Diagnosis Group**  
**ED Visits Not Admitted, Crude and Age-Adjusted Rates, 2008**

DISEASES OF THE BLOOD AND BLOOD-FORMING ORGANS

Hospital Service Area	ED Visits	ED Visits /1000 Population	Age_Adjusted Visits/1000 Population
Barre	40	0.6	0.6
Bennington	28	0.7	0.6
Brattleboro	17	0.5	0.5
Burlington	46	0.3	0.3
Middlebury	20	0.7	0.7
Morrisville	21	0.8	0.8
Newport	30	1.1	1.0
Randolph	11	0.8	0.7
Rutland	34	0.5	0.5
Springfield	21	0.7	0.7
St Albans	37	0.8	0.9
St Johnsbury	20	0.7	0.7
White River Jct	31	0.6	0.6
Totals	356	0.6	0.6

MENTAL DISORDERS

Hospital Service Area	ED Visits	ED Visits /1000 Population	Age_Adjusted Visits/1000 Population
Barre	979	14.8	15.0
Bennington	731	18.3	19.2
Brattleboro	648	20.7	21.5
Burlington	2,249	13.1	12.6
Middlebury	359	12.7	12.5
Morrisville	338	12.5	12.5
Newport	427	15.0	15.3
Randolph	155	10.7	10.7
Rutland	990	15.4	15.7
Springfield	620	22.0	23.7
St Albans	642	14.3	14.5
St Johnsbury	408	14.8	14.9
White River Jct	647	13.3	14.0
Totals	9,193	14.8	14.8

**Table E12**  
**Utilization by Hospital Service Area and Clinical Classification Software (CCS) High Level Diagnosis Group**  
**ED Visits Not Admitted, Crude and Age-Adjusted Rates, 2008**

DISEASES OF THE NERVOUS SYSTEM AND SENSE ORGANS

Hospital Service Area	ED Visits	ED Visits /1000 Population	Age_Adjusted Visits/1000 Population
Barre	2,325	35.1	35.4
Bennington	1,369	34.2	35.5
Brattleboro	776	24.8	25.3
Burlington	3,898	22.6	22.5
Middlebury	914	32.4	32.7
Morrisville	896	33.2	32.8
Newport	1,182	41.5	41.8
Randolph	428	29.6	29.8
Rutland	2,730	42.6	43.7
Springfield	1,133	40.3	41.6
St Albans	2,170	48.2	47.8
St Johnsbury	1,054	38.2	38.0
White River Jct	1,755	36.1	37.3
Totals	20,630	33.2	33.2

DISEASES OF THE CIRCULATORY SYSTEM

Hospital Service Area	ED Visits	ED Visits /1000 Population	Age_Adjusted Visits/1000 Population
Barre	1,502	22.7	22.4
Bennington	1,103	27.6	26.0
Brattleboro	599	19.1	18.2
Burlington	2,857	16.6	18.1
Middlebury	776	27.5	28.9
Morrisville	608	22.5	22.9
Newport	949	33.3	31.0
Randolph	320	22.1	21.3
Rutland	1,529	23.8	22.9
Springfield	1,029	36.6	33.6
St Albans	1,311	29.1	31.0
St Johnsbury	720	26.1	25.4
White River Jct	1,136	23.4	22.4
Totals	14,439	23.2	23.2

**Table E12**  
**Utilization by Hospital Service Area and Clinical Classification Software (CCS) High Level Diagnosis Group**  
**ED Visits Not Admitted, Crude and Age-Adjusted Rates, 2008**

DISEASES OF THE RESPIRATORY SYSTEM

Hospital Service Area	ED Visits	ED Visits /1000 Population	Age_Adjusted Visits/1000 Population
Barre	3,409	51.5	51.9
Bennington	1,908	47.7	48.3
Brattleboro	1,269	40.5	41.1
Burlington	4,469	26.0	26.0
Middlebury	1,187	42.1	42.7
Morrisville	1,482	54.9	54.5
Newport	2,138	75.1	75.1
Randolph	597	41.2	41.8
Rutland	3,138	48.9	49.9
Springfield	1,640	58.3	59.3
St Albans	3,240	72.0	73.0
St Johnsbury	1,624	58.9	58.3
White River Jct	2,734	56.3	57.2
Totals	28,835	46.4	46.4

DISEASES OF THE DIGESTIVE SYSTEM

Hospital Service Area	ED Visits	ED Visits /1000 Population	Age_Adjusted Visits/1000 Population
Barre	2,053	31.0	31.4
Bennington	1,180	29.5	30.6
Brattleboro	847	27.1	28.0
Burlington	3,058	17.8	17.5
Middlebury	809	28.7	28.7
Morrisville	853	31.6	31.2
Newport	919	32.3	32.4
Randolph	463	32.0	31.9
Rutland	2,122	33.1	33.9
Springfield	1,133	40.3	42.3
St Albans	1,758	39.1	39.4
St Johnsbury	851	30.8	30.2
White River Jct	1,338	27.5	28.9
Totals	17,384	28.0	28.0



**Table E12**  
**Utilization by Hospital Service Area and Clinical Classification Software (CCS) High Level Diagnosis Group**  
**ED Visits Not Admitted, Crude and Age-Adjusted Rates, 2008**

DISEASES OF THE GENITOURINARY SYSTEM

Hospital Service Area	ED Visits	ED Visits /1000 Population	Age_Adjusted Visits/1000 Population
Barre	1,275	19.3	19.4
Bennington	873	21.8	22.0
Brattleboro	421	13.4	13.7
Burlington	2,342	13.6	13.6
Middlebury	484	17.2	16.6
Morrisville	551	20.4	20.3
Newport	748	26.3	26.2
Randolph	218	15.1	15.0
Rutland	1,266	19.7	19.8
Springfield	773	27.5	28.2
St Albans	1,216	27.0	28.1
St Johnsbury	676	24.5	24.2
White River Jct	927	19.1	19.5
Totals	11,770	18.9	18.9

\*CONTRACEPTION AND COMPLICATIONS OF PREGNANCY AND CHILDBIRTH

Age-Adjusted Females

Hospital Service Area	ED Visits	ED Visits /1000 Population	Age_Adjusted Visits/1000 Population
Barre	168	5.0	5.3
Bennington	113	5.5	6.1
Brattleboro	83	5.2	5.9
Burlington	673	7.7	6.9
Middlebury	63	4.4	3.8
Morrisville	88	6.5	6.3
Newport	139	9.7	10.8
Randolph	25	3.5	3.7
Rutland	248	7.6	8.0
Springfield	126	8.8	10.5
St Albans	129	5.7	6.1
St Johnsbury	77	5.5	5.7
White River Jct	90	3.6	4.3
Totals	2,022	6.4	6.4

**Table E12**  
**Utilization by Hospital Service Area and Clinical Classification Software (CCS) High Level Diagnosis Group**  
**ED Visits Not Admitted, Crude and Age-Adjusted Rates, 2008**

DISEASES OF THE SKIN AND SUBCUTANEOUS TISSUE

Hospital Service Area	ED Visits	ED Visits /1000 Population	Age_Adjusted Visits/1000 Population
Barre	1,011	15.3	15.4
Bennington	483	12.1	12.4
Brattleboro	308	9.8	9.9
Burlington	1,587	9.2	9.0
Middlebury	341	12.1	12.0
Morrisville	322	11.9	11.9
Newport	488	17.1	17.0
Randolph	158	10.9	10.9
Rutland	872	13.6	13.9
Springfield	647	23.0	22.9
St Albans	902	20.0	20.5
St Johnsbury	330	12.0	11.9
White River Jct	895	18.4	18.7
Totals	8,344	13.4	13.4

MUSCULOSKELETAL SYSTEM AND CONNECTIVE TISSUE

Hospital Service Area	ED Visits	ED Visits /1000 Population	Age_Adjusted Visits/1000 Population
Barre	2,934	44.3	44.6
Bennington	1,183	29.6	30.3
Brattleboro	637	20.3	20.4
Burlington	2,483	14.4	14.7
Middlebury	712	25.2	25.6
Morrisville	804	29.8	29.8
Newport	1,141	40.1	40.2
Randolph	495	34.2	34.2
Rutland	1,887	29.4	29.4
Springfield	840	29.9	30.1
St Albans	1,908	42.4	42.9
St Johnsbury	749	27.1	26.9
White River Jct	1,765	36.3	36.8
Totals	17,538	28.2	28.2

**Table E12**  
**Utilization by Hospital Service Area and Clinical Classification Software (CCS) High Level Diagnosis Group**  
**ED Visits Not Admitted, Crude and Age-Adjusted Rates, 2008**

CONGENITAL ANOMALIES

Hospital Service Area	ED Visits	ED Visits /1000 Population	Age_Adjusted Visits/1000 Population
Barre	7	0.1	0.1
Bennington	7	0.2	0.2
Brattleboro	4	0.1	0.1
Burlington	15	0.1	0.1
Middlebury	3	0.1	0.1
Morrisville	0	0.0	0.0
Newport	10	0.4	0.4
Randolph	6	0.4	0.4
Rutland	9	0.1	0.1
Springfield	3	0.1	0.1
St Albans	4	0.1	0.1
St Johnsbury	0	0.0	0.0
White River Jct	8	0.2	0.2
Totals	76	0.1	0.1

CONDITIONS ORIGINATING IN THE PERINATAL PERIOD

Hospital Service Area	ED Visits	ED Visits /1000 Population	Age_Adjusted Visits/1000 Population
Barre	22	0.3	0.3
Bennington	20	0.5	0.5
Brattleboro	13	0.4	0.5
Burlington	48	0.3	0.3
Middlebury	12	0.4	0.5
Morrisville	16	0.6	0.6
Newport	7	0.2	0.3
Randolph	5	0.3	0.4
Rutland	28	0.4	0.5
Springfield	13	0.5	0.5
St Albans	28	0.6	0.5
St Johnsbury	10	0.4	0.4
White River Jct	19	0.4	0.4
Totals	241	0.4	0.4

**Table E12**  
**Utilization by Hospital Service Area and Clinical Classification Software (CCS) High Level Diagnosis Group**  
**ED Visits Not Admitted, Crude and Age-Adjusted Rates, 2008**

INJURY AND POISONING

Hospital Service Area	ED Visits	ED Visits /1000 Population	Age_Adjusted Visits/1000 Population
Barre	7,944	119.9	121.5
Bennington	5,258	131.4	135.4
Brattleboro	3,451	110.2	113.4
Burlington	16,070	93.4	91.1
Middlebury	3,333	118.2	117.5
Morrisville	4,178	154.7	153.6
Newport	3,941	138.4	140.9
Randolph	1,634	112.8	114.4
Rutland	8,773	136.8	139.9
Springfield	4,145	147.4	153.2
St Albans	7,108	157.9	158.4
St Johnsbury	3,423	124.1	124.2
White River Jct	5,537	113.9	118.0
Totals	74,795	120.4	120.4

SYMPTOMS, SIGNS, AND ILL-DEFINED CONDITIONS

Hospital Service Area	ED Visits	ED Visits /1000 Population	Age_Adjusted Visits/1000 Population
Barre	2,966	44.8	45.3
Bennington	1,651	41.3	42.7
Brattleboro	897	28.6	29.2
Burlington	6,094	35.4	35.1
Middlebury	1,239	43.9	43.8
Morrisville	1,110	41.1	40.8
Newport	1,446	50.8	51.3
Randolph	491	33.9	34.2
Rutland	2,959	46.1	47.1
Springfield	1,499	53.3	54.6
St Albans	2,719	60.4	61.4
St Johnsbury	1,209	43.8	43.6
White River Jct	2,030	41.8	43.0
Totals	26,310	42.3	42.3

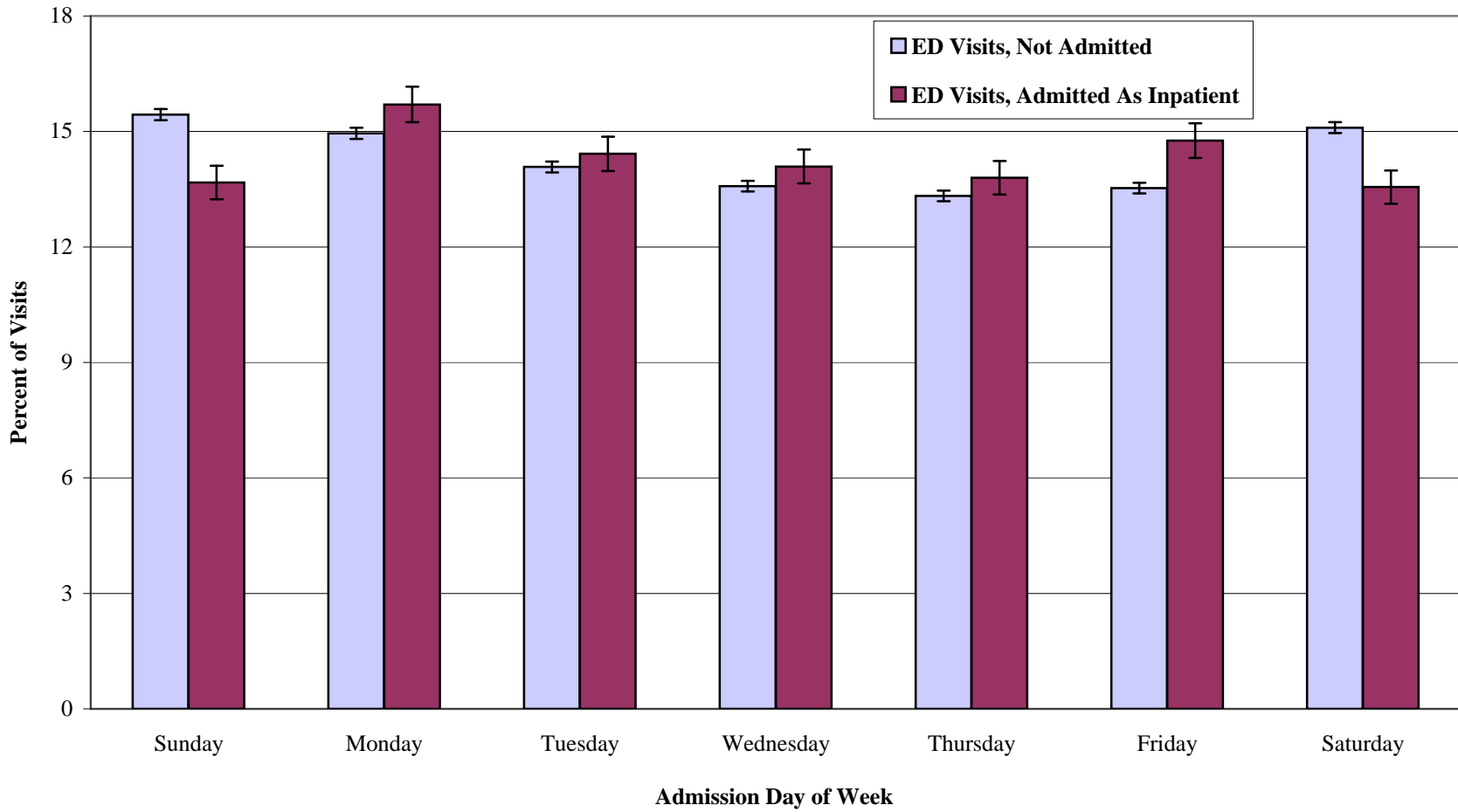
**Table E12**  
**Utilization by Hospital Service Area and Clinical Classification Software (CCS) High Level Diagnosis Group**  
**ED Visits Not Admitted, Crude and Age-Adjusted Rates, 2008**

RESIDUAL CODES, UNCLASSIFIED, ALL ECODES

Hospital Service Area	ED Visits	ED Visits /1000 Population	Age_Adjusted Visits/1000 Population
Barre	196	3.0	3.0
Bennington	133	3.3	3.2
Brattleboro	76	2.4	2.4
Burlington	425	2.5	2.7
Middlebury	75	2.7	2.8
Morrisville	88	3.3	3.3
Newport	150	5.3	5.1
Randolph	64	4.4	4.4
Rutland	196	3.1	2.9
Springfield	130	4.6	4.3
St Albans	181	4.0	4.3
St Johnsbury	112	4.1	3.9
White River Jct	350	7.2	7.3
Totals	2,176	3.5	3.5

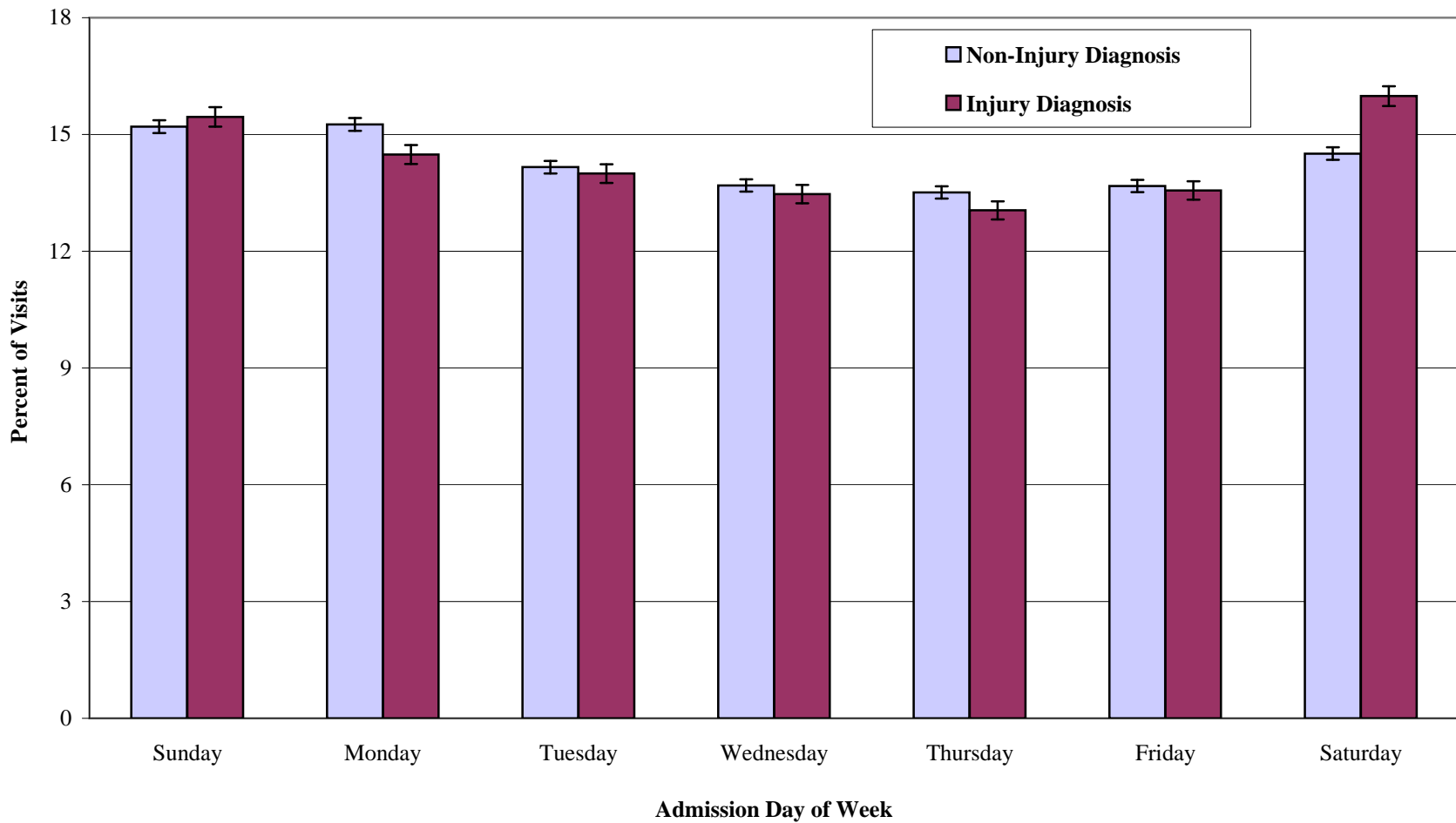
Vermont residents with ED visits not resulting in an inpatient stay in VT, NH, MA and NY hospitals.  
 20 ED visits that did not have any diagnosis codes are excluded from this analysis.

**Figure E1**  
**Percent of Visits by Admission Day of Week and Type of ED Visit**  
**2008 VT Hospital ED Visits, Includes VT Residents and Non-Residents**



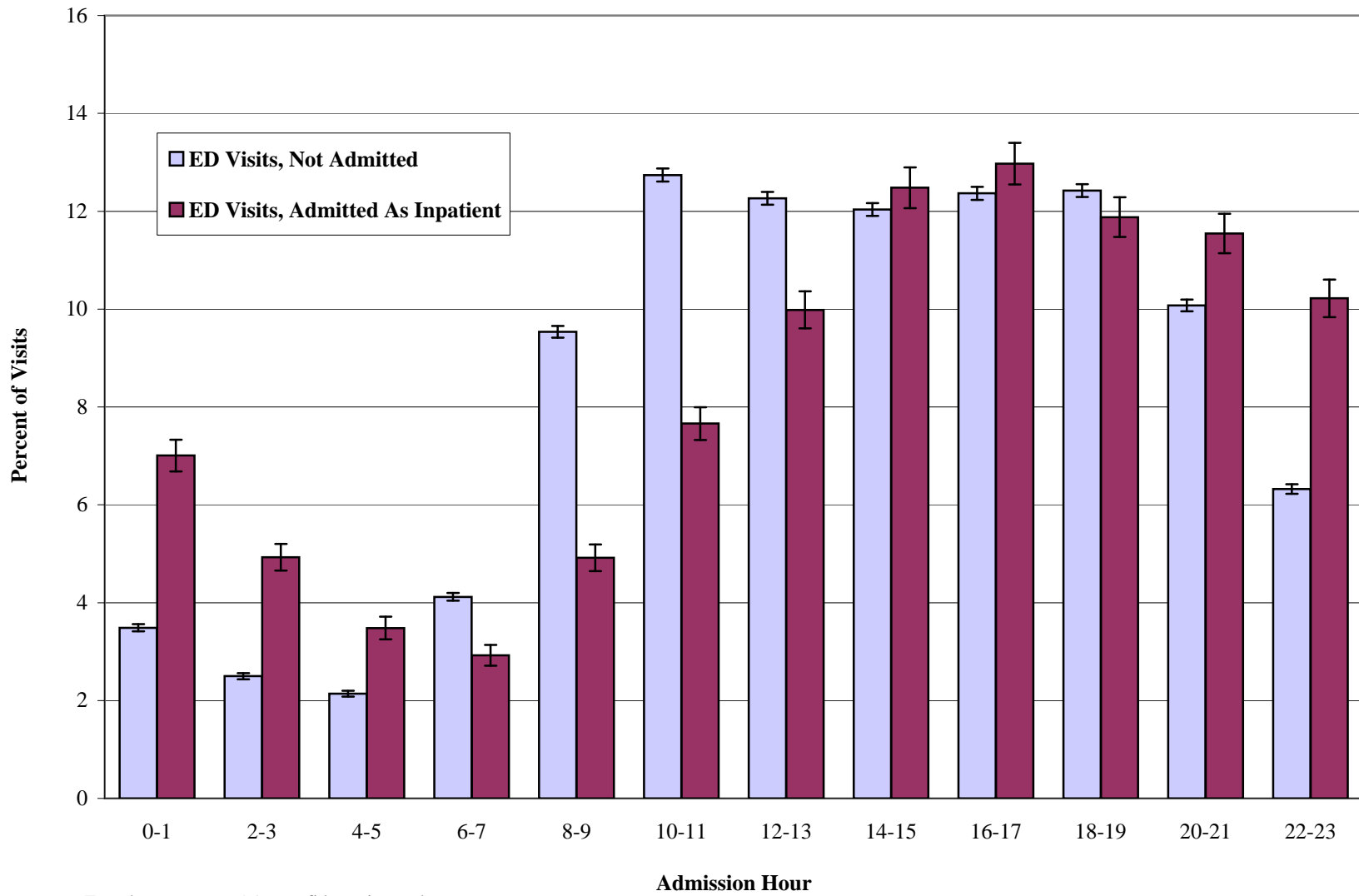
Error bars represent 95% confidence intervals

**Figure E2**  
**Percent of Visits by Admission Day of Week and Injury Versus Non-Injury Diagnosis**  
**2008 VT Hospital ED Visits, Includes VT Residents and Non-Residents**



Error bars represent 95% confidence intervals

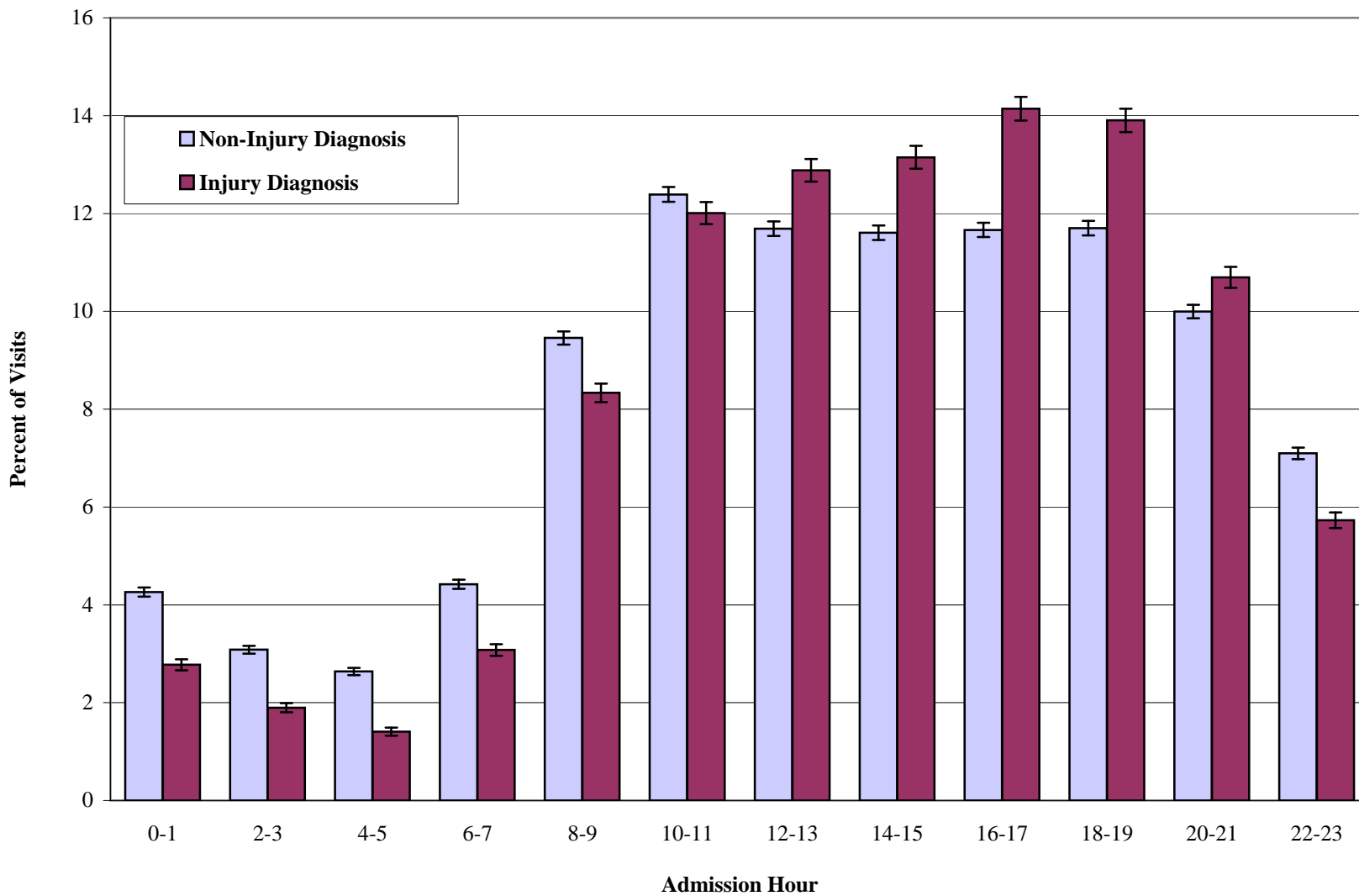
**Figure E3**  
**Percent of Visits by Admission Hour and Type of ED Visit**  
**2008 VT Hospital ED Visits, Includes VT Residents and Non-Residents**



Error bars represent 95% confidence intervals



**Figure E4**  
**Percent of Visits by Admission Hour and Injury Versus Non-Injury Diagnosis**  
**2008 VT Hospital ED Visits, Includes VT Residents and Non-Residents**



Error bars represent 95% confidence intervals

## APPENDIX E1

### Definitions and Formulae

**Charges:** Charges in this report are defined as hospital "facility" charges that are calculated by subtracting professional fees and patient convenience items charges from the total charge. However, facility charge data are not always reported according to the strict definition and some hospitals may have included salaried and contracted physician fees in their facility charges.

**Clinical Classifications Software (CCS) Grouper:** CCS was developed at the Agency for Healthcare Research and Quality (AHRQ) and is available at the website: <http://www.ahrq.gov/data/hcup/ccs.htm> CCS collapses principal diagnosis and procedure codes into meaningful categories. The single-level diagnosis CCS aggregates illnesses and conditions into more than 260 categories. Similarly, the single-level procedure CCS aggregates procedures into 231 categories, most representing single types of procedures. High level CCS groups further collapse single-level CCS into broad groups based on body systems or condition categories.

**Diagnosis:** The condition, determined after study, which occasioned the patient's admission to the hospital. The accuracy or reliability of the diagnosis depends on several factors including the physician's understanding of the problem and the recorder's ability to fit the condition to established coding conventions. For those cases with multiple problems, the primary diagnosis may not be the reason for surgery or cause of death.

**Emergency Department (ED) Dataset:** Consists of all records that had an associated revenue code beginning with 45 (Emergency Room).

**Hospital Service Area (HSA):** A group of Vermont ZipTowns (see definition of ZipTown on next page) based on each ZipTown's use of hospital resources. Starting in 2002, HSAs are based on inpatient discharges, where the diagnosis indicated the need for immediate care, for the years 1997-2001. In this fourth version of HSAs, ZipTowns

were assigned to HSAs based on a plurality rule. Prior definitions of HSAs have been based on all inpatient stays (except for newborns) and have used a strict decision rule for inclusion of ZipTowns in a hospital's service area. Use of a strict inclusion rule meant that there were always towns that were not assigned to any HSA and were labeled "contested." In this fourth version of HSAs, no towns are considered contested. See the Introduction for a map of HSAs and appendix E3 for a list of towns and hospitals within HSAs.

Two HSAs contain more than one hospital: White River Junction (Dartmouth Hitchcock Medical Center, Mt. Ascutney Hospital, and the Veterans Administration Hospital) and Brattleboro (Brattleboro Memorial Hospital and Grace Cottage Hospital).

**Population-based Rate:** The rate of a population's use of hospital services. Rates in this report represent hospital ED visits per 1,000 population for the selected group.

The *crude rate* is calculated as follows:

$\text{Crude Rate per 1,000 People} = \frac{\text{Number of Discharges or Visits For the Selected Group}}{\text{Total Population for the Selected Group}} \times 1,000$
---

These rates depend upon the accuracy of both the numerator and the denominator population. Data on population-at-risk (the denominator in these rates) are based on estimates. Rates for small areas or for groups with small numerators should be used with caution.

**Age adjusted rates** are particularly important for comparisons across areas because service areas have different population age mixes and age is a strong factor influencing hospitalization patterns. The age-adjusted rate for a given hospital service area is calculated by multiplying the area's age specific rate for each age group by the state population in that

age group, summing across age groups, and dividing the result by the total state population. This result is then multiplied by 1,000. The following age groups are used in this volume for the computation of age-adjusted rates: 0-4, 5-14, 15-24, 25-34, 35-44, 45-54, 55-64, 65-69, 70-74, 75-79, and 80+. In other publications, different standards, such as the projected year 2000 U.S. population, are used for age adjusting and different age groupings may also be used in the age adjusting process.

**Principal Payer:** The anticipated principal source of payment of the patient's hospital bill recorded by the hospital on each discharge record.

**ZipTown Grouping:** The combination of towns into groups with compatible town and Zip code boundaries to reconcile discrepancies between mailing address and town of residence. Towns are also grouped to achieve a minimum population of 1000 persons in each ZipTown group. ZipTowns were updated in 1996, with minor adjustments in 2004. This volume reflects these changes.

## APPENDIX E2

### 2008 Clinical Classifications Software (CCS) High-Level and Single-Level Diagnosis Categories

#### CCS High Level Diagnosis Group 1: Infectious and Parasitic Diseases

- 1 Tuberculosis
- 2 Septicemia (except in labor)
- 3 Bacterial infection, unspecified site
- 4 Mycoses
- 5 HIV infection
- 6 Hepatitis
- 7 Viral infection
- 8 Other infections, including parasitic
- 9 Sexually transmitted infections (not HIV or hepatitis)
- 10 Immunizations & screening for infectious disease

#### CCS High Level Diagnosis Group 2: Neoplasms

- 11 Cancer of head & neck
- 12 Cancer of esophagus
- 13 Cancer of stomach
- 14 Cancer of colon
- 15 Cancer of rectum & anus
- 16 Cancer of liver & intrahepatic bile duct
- 17 Cancer of pancreas
- 18 Cancer of other GI organs, peritoneum
- 19 Cancer of bronchus, lung
- 20 Cancer, other respiratory & intrathoracic
- 21 Cancer of bone & connective tissue
- 22 Melanomas of skin
- 23 Other non-epithelial cancer of skin
- 24 Cancer of breast
- 25 Cancer of uterus
- 26 Cancer of cervix
- 27 Cancer of ovary
- 28 Cancer of other female genital organs
- 29 Cancer of prostate
- 30 Cancer of testis
- 31 Cancer of other male genital organs
- 32 Cancer of bladder
- 33 Cancer of kidney & renal pelvis
- 34 Cancer of other urinary organs

- 35 Cancer of brain & nervous system
- 36 Cancer of thyroid
- 37 Hodgkin's disease
- 38 Non-Hodgkin's lymphoma
- 39 Leukemias
- 40 Multiple myeloma
- 41 Cancer, other & unspecified primary
- 42 Secondary malignancies
- 43 Malignant neoplasm without specification of site
- 44 Neoplasms of unspecified nature or uncertain behavior
- 45 Maintenance chemotherapy, radiotherapy
- 46 Benign neoplasm of uterus
- 47 Other & unspecified benign neoplasm

#### CCS High Level Diagnosis Group 3: Endocrine, Nutritional, Metabolic, and Immunity Disorders

- 48 Thyroid disorders
- 49 Diabetes mellitus without complication
- 50 Diabetes mellitus with complications
- 51 Other endocrine disorders
- 52 Nutritional deficiencies
- 53 Disorders of lipid metabolism
- 54 Gout & other crystal arthropathies
- 55 Fluid & electrolyte disorders
- 56 Cystic fibrosis
- 57 Immunity disorders
- 58 Other nutritional, endocrine & metabolic disorders

#### CCS High Level Diagnosis Group 4: Diseases of the Blood and Blood-Forming Organs

- 59 Deficiency & other anemia
- 60 Acute posthemorrhagic anemia
- 61 Sickle cell anemia
- 62 Coagulation & hemorrhagic disorders
- 63 Diseases of white blood cells
- 64 Other hematologic conditions

## APPENDIX E2

### 2008 Clinical Classifications Software (CCS) High-Level and Single-Level Diagnosis Categories

#### CCS High Level Diagnosis Group 5: Mental Disorders

- 650 MHSA: Adjustment disorders
- 651 MHSA: Anxiety disorders
- 652 MHSA: Attention-deficit, conduct, and disruptive behavior disorders
- 653 MHSA: Delirium, dementia, and amnestic and other cognitive disorders
- 654 MHSA: Developmental disorders
- 655 MHSA: Disorders usually diagnosed in infancy, childhood, or adolescence
- 656 MHSA: Impulse control disorders, NEC
- 657 MHSA: Mood disorders
- 658 MHSA: Personality disorders
- 659 MHSA: Schizophrenia and other psychotic disorders
- 660 MHSA: Alcohol-related disorders
- 661 MHSA: Substance-related disorders
- 662 MHSA: Suicide and intentional self-inflicted injury
- 663 MHSA: Screening and history of mental health and substance abuse codes
- 670 MHSA: Miscellaneous mental disorders

#### CCS High Level Diagnosis Grp 6: Dis. of the Nervous System and Sense Organs

- 76 Meningitis (except that caused by tuberculosis or STD)
- 77 Encephalitis (except that caused by tuberculosis or STD)
- 78 Other CNS infection & poliomyelitis
- 79 Parkinson's disease
- 80 Multiple sclerosis
- 81 Other hereditary & degenerative nervous system conditions
- 82 Paralysis
- 83 Epilepsy, convulsions
- 84 Headache, including migraine
- 85 Coma, stupor & brain damage
- 86 Cataract
- 87 Retinal detachments, defects, vascular occlusion & retinopathy
- 88 Glaucoma
- 89 Blindness & vision defects
- 90 Inflammation, infection of eye (except that caused by tuberculosis or STD)
- 91 Other eye disorders
- 92 Otitis media & related conditions
- 93 Conditions associated with dizziness or vertigo
- 94 Other ear & sense organ disorders
- 95 Other nervous system disorders

#### CCS High Level Diagnosis Group 7: Diseases of the Circulatory System

- 96 Heart valve disorders
- 97 Peri-, endo- & myocarditis, cardiomyopathy (except that caused by tuberculosis or STD)
- 98 Essential hypertension
- 99 Hypertension with complications & secondary hypertension
- 100 Acute myocardial infarction
- 101 Coronary atherosclerosis & other heart disease
- 102 Nonspecific chest pain
- 103 Pulmonary heart disease
- 104 Other & ill-defined heart disease
- 105 Conduction disorders
- 106 Cardiac dysrhythmias
- 107 Cardiac arrest & ventricular fibrillation
- 108 Congestive heart failure, nonhypertensive
- 109 Acute cerebrovascular disease
- 110 Occlusion or stenosis of precerebral arteries
- 111 Other & ill-defined cerebrovascular disease
- 112 Transient cerebral ischemia
- 113 Late effects of cerebrovascular disease
- 114 Peripheral & visceral atherosclerosis
- 115 Aortic, peripheral & visceral artery aneurysms
- 116 Aortic & peripheral arterial embolism or thrombosis
- 117 Other circulatory disease
- 118 Phlebitis, thrombophlebitis & thromboembolism
- 119 Varicose veins of lower extremity
- 120 Hemorrhoids
- 121 Other diseases of veins & lymphatics

#### CCS High Level Diagnosis Group 8: Diseases of the Respiratory System

- 122 Pneumonia (except that caused by tuberculosis or STD)
- 123 Influenza
- 124 Acute & chronic tonsillitis
- 125 Acute bronchitis
- 126 Other upper respiratory infections
- 127 Chronic obstructive pulmonary disease & bronchiectasis
- 128 Asthma

## APPENDIX E2

### 2008 Clinical Classifications Software (CCS) High-Level and Single-Level Diagnosis Categories

- 129 Aspiration pneumonitis, food/vomitus
- 130 Pleurisy, pneumothorax, pulmonary collapse
- 131 Respiratory failure, insufficiency, arrest (adult)
- 132 Lung disease due to external agents
- 133 Other lower respiratory disease
- 134 Other upper respiratory disease

#### CCS High Level Diagnosis Group 9: Diseases of the Digestive System

- 135 Intestinal infection
- 136 Disorders of teeth & jaw
- 137 Diseases of mouth, excluding dental
- 138 Esophageal disorders
- 139 Gastroduodenal ulcer (except hemorrhage)
- 140 Gastritis & duodenitis
- 141 Other disorders of stomach & duodenum
- 142 Appendicitis & other appendiceal conditions
- 143 Abdominal hernia
- 144 Regional enteritis & ulcerative colitis
- 145 Intestinal obstruction without hernia
- 146 Diverticulosis & diverticulitis
- 147 Anal & rectal conditions
- 148 Peritonitis & intestinal abscess
- 149 Biliary tract disease
- 150 Liver disease, alcohol-related
- 151 Other liver diseases
- 152 Pancreatic disorders (not diabetes)
- 153 Gastrointestinal hemorrhage
- 154 Noninfectious gastroenteritis
- 155 Other gastrointestinal disorders

#### CCS High Level Diagnosis Group 10: Diseases of the Genitourinary System

- 156 Nephritis, nephrosis, renal sclerosis
- 157 Acute & unspecified renal failure
- 158 Chronic renal failure
- 159 Urinary tract infections
- 160 Calculus of urinary tract
- 161 Other diseases of kidney & ureters

- 162 Other diseases of bladder & urethra
- 163 Genitourinary symptoms & ill-defined conditions
- 164 Hyperplasia of prostate
- 165 Inflammatory conditions of male genital organs
- 166 Other male genital disorders
- 167 Nonmalignant breast conditions
- 168 Inflammatory diseases of female pelvic organs
- 169 Endometriosis
- 170 Prolapse of female genital organs
- 171 Menstrual disorders
- 172 Ovarian cyst
- 173 Menopausal disorders
- 174 Female infertility
- 175 Other female genital disorders

#### CCS High Level Diagnosis Group 11: Contraception and Complications of Pregnancy and Childbirth

- 176 Contraceptive & procreative management
- 177 Spontaneous abortion
- 178 Induced abortion
- 179 Postabortion complications
- 180 Ectopic pregnancy
- 181 Other complications of pregnancy
- 182 Hemorrhage during pregnancy, abruptio placenta, placenta previa
- 183 Hypertension complicating pregnancy, childbirth & the puerperium
- 184 Early or threatened labor
- 185 Prolonged pregnancy
- 186 Diabetes or abnormal glucose tolerance complicating pregnancy, childbirth, or the puerperium
- 187 Malposition, malpresentation
- 188 Fetopelvic disproportion, obstruction
- 189 Previous C-section
- 190 Fetal distress & abnormal forces of labor
- 191 Polyhydramnios & other problems of amniotic cavity
- 192 Umbilical cord complication
- 193 Trauma to perineum & vulva
- 194 Forceps delivery

## APPENDIX E2

### 2008 Clinical Classifications Software (CCS) High-Level and Single-Level Diagnosis Categories

- 195 Other complications of birth, puerperium affecting management of mother  
196 Normal pregnancy and/or delivery
- CCS High Level Diagnosis Group 12: Diseases of the Skin and Subcutaneous Tissue**
- 197 Skin & subcutaneous tissue infections  
198 Other inflammatory condition of skin  
199 Chronic ulcer of skin  
200 Other skin disorders
- CCS High Level Diagnosis Group 13: Musculoskeletal System and Connective Tissue**
- 201 Infective arthritis & osteomyelitis (except that caused by tuberculosis or sexually transmitted disease)  
202 Rheumatoid arthritis & related disease  
203 Osteoarthritis  
204 Other non-traumatic joint disorders  
205 Spondylosis, intervertebral disc disorders, other back problems  
206 Osteoporosis  
207 Pathological fracture  
208 Acquired foot deformities  
209 Other acquired deformities  
210 Systemic lupus erythematosus & connective tissue disorders  
211 Other connective tissue disease  
212 Other bone disease & musculoskeletal deformities
- CCS High Level Diagnosis Group 14: Congenital Anomalies**
- 213 Cardiac & circulatory congenital anomalies  
214 Digestive congenital anomalies  
215 Genitourinary congenital anomalies  
216 Nervous system congenital anomalies  
217 Other congenital anomalies
- CCS High Level Diagnosis Group 15: Conditions Originating in the Perinatal Period**
- 218 Liveborn  
219 Short gestation, low birth weight & fetal growth retardation
- 220 Intrauterine hypoxia & birth asphyxia  
221 Respiratory distress syndrome  
222 Hemolytic jaundice & perinatal jaundice  
223 Birth trauma  
224 Other perinatal conditions
- CCS High Level Diagnosis Group 16: Injury and Poisoning**
- 225 Joint disorders & dislocations, trauma-related  
226 Fracture of neck of femur (hip)  
227 Spinal cord injury  
228 Skull & face fractures  
229 Fracture of upper limb  
230 Fracture of lower limb  
231 Other fractures  
232 Sprains & strains  
233 Intracranial injury  
234 Crushing injury or internal injury  
235 Open wounds of head, neck & trunk  
236 Open wounds of extremities  
237 Complication of device, implant or graft  
238 Complications of surgical procedures or medical care  
239 Superficial injury, contusion  
240 Burns  
241 Poisoning by psychotropic agents  
242 Poisoning by other medications & drugs  
243 Poisoning by nonmedicinal substances  
244 Other injuries & conditions due to external causes
- CCS High Level Diagnosis Group 17: Symptoms, Signs and Ill-Defined Conditions**
- 245 Syncope  
246 Fever of unknown origin  
247 Lymphadenitis  
248 Gangrene  
249 Shock  
250 Nausea & vomiting  
251 Abdominal pain

## APPENDIX E2

### 2008 Clinical Classifications Software (CCS) High-Level and Single-Level Diagnosis Categories

252 Malaise & fatigue  
253 Allergic reactions  
254 Rehabilitation care, fitting of prostheses & adjustment of devices  
255 Administrative/social admission  
256 Medical examination/evaluation  
257 Other aftercare  
258 Other screening for suspected conditions (not mental disorders or infectious disease)

#### **CCS High Level Diagnosis Group 18: Residual Codes, Unclassified, All E codes (External Cause Codes)**

259 Residual codes; unclassified  
2601 E codes: Cut/pierce  
2602 E codes: Drowning/submersion  
2603 E codes: Fall  
2604 E codes: Fire/burn  
2605 E codes: Firearm

2606 E codes: Machinery  
2607 E codes: Motor vehicle traffic (MVT)  
2608 E codes: Pedal cyclist; not MVT  
2609 E codes: Pedestrian; not MVT  
2610 E codes: Transport; not MVT  
2611 E codes: Natural/environment  
2612 E codes: Overexertion  
2613 E codes: Poisoning  
2614 E codes: Struck by; against  
2615 E codes: Suffocation  
2616 E codes: Adverse effects of medical care  
2617 E codes: Adverse effects of medical drugs  
2618 E codes: Other specified and classifiable  
2619 E codes: Other specified; not elsewhere classified (NEC)  
2620 E codes: Unspecified  
2621 E codes: Place of occurrence



**APPENDIX E3**  
**Towns and Hospitals in Vermont Hospital Service Areas**  
**Based on 1997-2001 Vermont Resident Immediate Care Inpatient Discharges**

**BARRE** – Central Vermont Medical Center

Calais+	Montpelier+	Moretown	Waitsfield+	Williamstown+
Calais	Barre City	Northfield+	Fayston	Washington
Woodbury	Barre Town	Northfield	Waitsfield	Williamstown
Worcester	Berlin	Roxbury	Warren	
Marshfield+	East Montpelier	Plainfield	Waterbury+	
Cabot	Middlesex	Topsham	Bolton	
Marshfield	Montpelier		Duxbury	
	Orange		Waterbury	

**BENNINGTON** – Southwestern Vermont Medical Center

Arlington+	Bennington+	Dorset+	Manchester	Whitingham
Arlington	Bennington	Dorset	Readsboro+	Wilmington+
Sandgate	Glastenbury	Rupert	Readsboro	Searsburg
Sunderland	Pownal	Dover+	Stamford	Wilmington
	Shaftsbury	Dover		
	Woodford	Somerset		

**BRATTLEBORO** – Brattleboro Memorial Hospital, Grace Cottage Hospital

Brattleboro+	Jamaica+	Newfane+	Vernon
Brattleboro	Jamaica	Brookline	Westminster+
Dummerston	Stratton	Newfane	Putney
Guilford	Wardsboro	Townshend	Westminster
Halifax	Winhall	Windham	
Marlboro			

+ Indicates an aggregated ZipTown group.

Use of Hospital Service Area definitions based on 1997-2001 immediate care inpatient discharges began in 2002.

Therefore, numbers reported here are not directly comparable to those published prior to 2002.

**APPENDIX E3**  
**Towns and Hospitals in Vermont Hospital Service Areas**  
**Based on 1997-2001 Vermont Resident Immediate Care Inpatient Discharges**

**BURLINGTON** – Fletcher Allen Health Care

Burlington	Fairfax	Huntington+	Milton	Westford
Cambridge+	Ferrisburgh	Buel's Gore	Monkton	Williston+
Cambridge	Grand Isle+	Huntington	Richmond	St.George
Fletcher	Grand Isle	Starksboro	Shelburne	Williston
Charlotte	North Hero	Jericho+	So. Burlington	Winooski
Colchester	Hinesburg	Jericho	South Hero	
Essex		Underhill		

**MIDDLEBURY** – Porter Medical Center

Bridport	Middlebury+	New Haven	Vergennes+
Bristol+	Cornwall	Orwell	Addison
Bristol	Middlebury	Shoreham+	Panton
Lincoln	Ripton	Shoreham	Vergennes
	Salisbury	Whiting	Waltham
	Weybridge		

**MORRISVILLE** – Copley Hospital

Craftsbury	Hardwick+	Hyde Park	Morrisville+
Eden+	Greensboro	Johnson	Elmore
Belvidere	Hardwick		Morristown
Eden	Stannard		Wolcott
Waterville			Stowe

+ Indicates an aggregated ZipTown group.

Use of Hospital Service Area definitions based on 1997-2001 immediate care inpatient discharges began in 2002.

Therefore, numbers reported here are not directly comparable to those published prior to 2002.

**APPENDIX E3**  
**Towns and Hospitals in Vermont Hospital Service Areas**  
**Based on 1997-2001 Vermont Resident Immediate Care Inpatient Discharges**

NEWPORT – North Country Hospital

Barton+	Canaan+	Irasburg+	Lowell +	Troy+
Barton	Averill	Albany	Lowell	Jay
Brownington	Avery's Gore	Irasburg	Westfield	Troy
Glover	Bloomfield	Island Pond+	Newport+	
Westmore	Brunswick	Brighton	Coventry	
	Canaan	Charleston	Derby	
	Lemington	Ferdinand	Holland	
	Norton	Lewis	Newport City	
	Warner's Grant	Morgan	Newport Town	
	Warren's Gore			

RANDOLPH – Gifford Medical Center

Bethel+	Chelsea	Randolph+	Rochester+
Barnard	Pittsfield+	Braintree	Granville
Bethel	Pittsfield	Randolph	Hancock
Brookfield	Stockbridge		Rochester

RUTLAND – Rutland Regional Medical Center

Brandon+	Danby+	Mt. Holly	Rutland+	Wells+
Brandon	Danby	Pawlet	Killington	Middletown Spr.
Goshen	Mt. Tabor	Pittsford+	Mendon	Wells
Leicester	Fair Haven+	Chittenden	Rutland City	West Rutland+
Sudbury	Benson	Pittsford	Rutland Town	Ira
Clarendon+	Castleton	Poultney	Wallingford+	West Rutland
Clarendon	Fair Haven	Proctor	Tinmouth	
Shrewsbury	Hubbardton		Wallingford	
	West Haven			

+ Indicates an aggregated ZipTown group.

Use of Hospital Service Area definitions based on 1997-2001 immediate care inpatient discharges began in 2002.

Therefore, numbers reported here are not directly comparable to those published prior to 2002.

**APPENDIX E3**  
**Towns and Hospitals in Vermont Hospital Service Areas**  
**Based on 1997-2001 Vermont Resident Immediate Care Inpatient Discharges**

SPRINGFIELD – Springfield Hospital

Cavendish	Chester+	Londonderry+	Ludlow
	Andover	Landgrove	Rockingham
	Athens	Londonderry	Springfield
	Baltimore	Peru	Weathersfield
	Chester	Weston	
	Grafton		

ST. ALBANS – Northwestern Medical Center

Alburgh+	Enosburgh+	Richford+	St. Albans+	Swanton+
Alburgh	Enosburgh	Berkshire	Georgia	Highgate
Isle La Motte	Montgomery	Richford	St. Albans City	Swanton
Bakersfield	Fairfield	Sheldon	St. Albans Town	
	Franklin			

ST. JOHNSBURY – Northeastern Vermont Regional Hospital

Barnet	Concord	Lyndon+	St. Johnsbury+
Burke+	Danville+	Kirby	St. Johnsbury
Burke	Danville	Lyndon	Waterford
East Haven	Walden	Wheelock	
Granby		Sheffield+	
Guildhall		Sheffield	
Lunenburg		Sutton	
Maidstone			
Newark			
Victory			

+ Indicates an aggregated ZipTown group.

Use of Hospital Service Area definitions based on 1997-2001 immediate care inpatient discharges began in 2002.

Therefore, numbers reported here are not directly comparable to those published prior to 2002.

**APPENDIX E3**  
**Towns and Hospitals in Vermont Hospital Service Areas**  
**Based on 1997-2001 Vermont Resident Immediate Care Inpatient Discharges**

WHITE RIVER JUNCTION – Dartmouth Hitchcock Medical Center, Mt. Ascutney Hospital and Health Center, and the Veterans Administration Medical Center

Bradford	Fairlee+	Hartford+	Ryegate	Windsor+
Bridgewater+	Fairlee	Hartford	Sharon	West Windsor
Bridgewater	Vershire	Pomfret	Thetford+	Windsor
Plymouth	West Fairlee	Hartland	Strafford	Woodstock
Reading	Groton+	Newbury	Thetford	
Corinth	Groton	Norwich	Tunbridge	
	Peacham	Royalton		

+ Indicates an aggregated ZipTown group.

Use of Hospital Service Area definitions based on 1997-2001 immediate care inpatient discharges began in 2002.

Therefore, numbers reported here are not directly comparable to those published prior to 2002.

**APPENDIX E4**  
**Hospitals in this Report**

Vermont Acute Care Hospitals  
(Abbreviations are used in Tables E8 - E11)

Brattleboro Memorial Hospital  
(BRAT)  
17 Belmont Avenue  
Brattleboro, Vermont 05301

Central Vermont Medical Center  
(CVMC)  
P.O. Box 547  
Barre, Vermont 05641

Copley Hospital  
(COPL)  
528 Washington Highway  
Morrisville, Vermont 05661

Fletcher Allen Health Care  
(FAHC)  
111 Colchester Avenue  
Burlington, Vermont 05401

Gifford Medical Center  
(GIFF)  
44 Main Street, P.O. Box 2000  
Randolph, Vermont 05060

Grace Cottage Hospital  
(GRAC)  
Route 35, P.O. Box 216  
Townshend, Vermont 05353

Mt. Ascutney Hospital and Health Center  
(MT.A)  
289 County Road  
Windsor, Vermont 05089

North Country Hospital  
(NCTY)  
189 Prouty Drive  
Newport, Vermont 05855

Northeastern Vermont Regional Hospital  
(NEVT)  
1315 Hospital Drive, P.O. Box 905  
St. Johnsbury, Vermont 05819

Northwestern Medical Center  
(NWST)  
133 Fairfield Street, P.O. Box 1370  
St. Albans, Vermont 05478

Porter Medical Center  
(PORT)  
115 Porter Drive  
Middlebury, Vermont 05753

Rutland Regional Medical Center  
(RRMC)  
160 Allen Street  
Rutland, Vermont 05701

Southwestern Vermont Medical Center  
(SWVT)  
100 Hospital Drive East  
Bennington, Vermont 05201

Springfield Hospital  
(SPRF)  
25 Ridgewood Road, P.O. Box 2003  
Springfield, Vermont 05156

The Veterans Administration Medical  
and Regional Office Center (V.A.)  
215 North Main Street  
White River Junction, Vermont 05009

**APPENDIX E4**  
**Hospitals in this Report**

New Hampshire Hospitals  
(Abbreviations are used in Tables E8 - E11)

Alice Peck Day Memorial Hospital (NH-Alice Day) Lebanon, New Hampshire	Exeter Hospital (NH-Exeter) Exeter, New Hampshire	Parkland Medical Center (NH-Parkland) Derry, New Hampshire
Androscoggin Valley Hospital (NH-Androscoggin) Berlin, New Hampshire	Franklin Regional Hospital (NH-Franklin) Franklin, New Hampshire	Portsmouth Regional Hospital (NH-Portsmouth) Portsmouth, New Hampshire
Catholic Medical Center (NH-Catholic) Manchester, New Hampshire	Frisbie Memorial Hospital (NH-Frisbie) Rochester, New Hampshire	Southern New Hampshire Medical Center (NH-Southern NH) Nashua, New Hampshire
Cheshire Medical Center (NH-Cheshire) Keene, New Hampshire	Huggins Hospital (NH-Huggins) Wolfeboro, New Hampshire	St. Joseph's Hospital (NH-St. Joseph's) Nashua, New Hampshire
Concord Hospital (NH-Concord) Concord, New Hampshire	Lakes Region General Hospital (NH-Lakes Region) Laconia, New Hampshire	Speare Memorial Hospital (NH-Speare) Plymouth, New Hampshire
Cottage Hospital (NH-Cottage) Woodsville, New Hampshire	Littleton Hospital (NH-Littleton) Littleton, New Hampshire	Upper Connecticut Valley Hospital (NH-Upper CT Val) Colebrook, New Hampshire
Dartmouth Hitchcock Medical Center (NH-Hitchcock) Lebanon, New Hampshire	Memorial Hospital (NH-Memorial) North Conway, New Hampshire	Valley Regional Hospital (NH-Valley Reg.) Claremont, New Hampshire
Dartmouth Hitchcock Psychiatric Unit* (NH-Hitch. Psych) Lebanon, New Hampshire	Monadnock Community Hospital (NH-Monadnock) Peterborough, New Hampshire	Weeks Medical Center Hospital (NH-Weeks) Lancaster, New Hampshire
Elliot Hospital (NH-Elliot) Manchester, New Hampshire	New London Hospital (NH-New London) New London, New Hampshire	Wentworth-Douglass Hospital (NH-Wntwth-Doug) Dover, New Hampshire

\* Records from the Dartmouth Hitchcock Psychiatric Unit are combined with the Dartmouth Hitchcock Medical Center beginning 2008.

**APPENDIX E4**  
**Hospitals in this Report**

Massachusetts Hospitals Most Frequently Used by Vermont Residents

(Abbreviations are used in Tables E8 - E11)

Baystate Medical Center  
(MA-Baystate)  
Springfield, Massachusetts

Berkshire Medical Center  
(MA-Berkshire)  
Pittsfield, Massachusetts

Beth Israel Deaconess Medical Center  
(MA-Beth Israel)  
Boston, Massachusetts

Brigham and Women's Hospital  
(MA-Brigham)  
Boston, Massachusetts

Children's Hospital Boston  
(MA-Children's)  
Boston, Massachusetts

Cooley Dickinson Hospital  
(MA-Cooley Dicki)  
Northampton, Massachusetts

Dana-Farber Cancer Institute  
(MA-Dana Farber)  
Boston, Massachusetts

Franklin Medical Center  
(MA-Franklin Med)  
Greenfield, Massachusetts

Hillcrest Hospital  
(MA-Hillcrest)  
Pittsfield, Massachusetts

Lahey Clinic Hospital  
(MA-Lahey)  
Burlington, Massachusetts

Massachusetts Eye and Ear Infirmary  
(MA-MA Eye & Ear)  
Boston, Massachusetts

Massachusetts General Hospital  
(MA-MA General)  
Boston, Massachusetts

New England Baptist Hospital  
(MA-N.E. Baptist)  
Boston, Massachusetts

Newton-Wellesley Hospital  
(MA-Newton Wells)  
Newton, Massachusetts

North Adams Regional Hospital  
(MA-North Adams)  
North Adams, Massachusetts

Northampton VA Medical Center  
(MA-Northampton)  
Northampton, Massachusetts

Tufts-New England Medical Center  
(MA-N.E. Med Ctr)  
Boston, Massachusetts

UMass Memorial Medical Center  
(MA-U Mass)  
Worcester, Massachusetts

VA Boston Healthcare—Boston Division  
(MA-Boston VA)  
Boston, Massachusetts

VA Boston Healthcare—Brockton Division  
(MA-Brockton VA)  
Brockton, Massachusetts

Massachusetts hospitals are grouped together in Table E10.



**APPENDIX E4**  
**Hospitals in this Report**

New York Hospitals Most Frequently Used by Vermont Residents  
(Abbreviations are used in Tables E8 - E11)

Albany Medical Center Hospital  
(NY-Albany)  
Albany, New York

Mary McClellan Hospital  
(NY-McClellan)  
Cambridge, New York

Phelps Memorial Hospital Center  
(NY-Phelps)  
Sleepy Hollow, New York

Champlain Valley Physicians Hospital  
Medical Center (NY-Champ Val)  
Plattsburgh, New York

Memorial Hospital for Cancer and Allied  
Disorders (NY-Hosp for CA)  
New York, New York

Samaritan Hospital  
(NY-Samaritan)  
Troy, New York

Columbia Presbyterian Medical Center  
(NY-Presbyterian)  
New York, New York

Moses-Ludington Hospital  
(NY-Moses-Luding)  
Ticonderoga, New York

St. Peters Hospital  
(NY-St Peters)  
Albany, New York

Glens Falls Hospital  
(NY-Glens Falls)  
Glens Falls, New York

New York United Hospital Medical Center  
(NY-United Med C.)  
Port Chester, New York

Leonard Hospital  
(NY-Leonard)  
Troy, New York

New York Weill Cornell Medical Center  
(NY-New York)  
New York, New York

New York hospitals are grouped  
together in Table E10.