

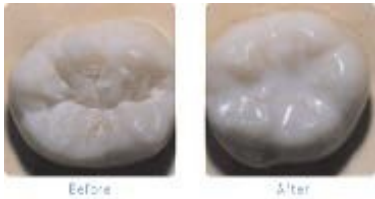
WHAT IS THE DIFFERENCE BETWEEN FLUORIDE VARNISH. DENTAL SEALANTS. AND SDF?

What is Fluoride Varnish?



- Fluoride varnish is a thick liquid painted on the teeth with a small disposable brush. It makes the tooth stronger and can help prevent cavities.
- Fluoride varnish is flavored, easy to apply and dries quickly.
- Fluoride varnish can be applied anywhere: at a school, health center, medical office, or dental office.

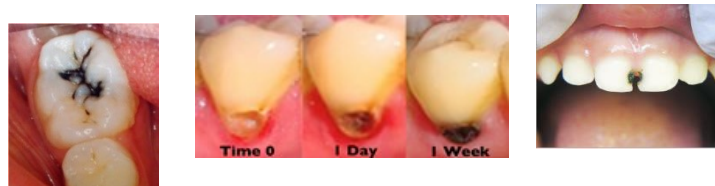
What is a Dental Sealant?



- A dental sealant is a thin protective coating placed on the biting surface of back teeth by a dental professional.
- Back teeth have many small grooves and pits where germs can hide and start cavities. Sealants protect these teeth, especially when children are most at risk for cavities.
- Sealants are less expensive than a filling, easy to apply, and require no needles or drills.
- Sealants may last many years and are checked at regular dental visits.

What is SDF?

- SDF (silver diamine fluoride) is a liquid that can be brushed on teeth to stop cavities from growing, after they have formed.
- SDF is applied without using needles or a drill.
- SDF has both silver and fluoride in it. Silver kills the germs that cause cavities, and fluoride helps to make the tooth stronger.
- Cavities treated with SDF turn black. This is a sign that SDF is working. After SDF treatment, a dental professional may cover the black treated area with a white filling, if needed.
- SDF has been approved by the FDA for treating sensitive teeth and has received “breakthrough therapy designation” for treating cavities.
- VT Medicaid covers SDF treatment for children and adults.
- SDF can help young children, older Vermonters, Vermonters with disabilities, and people who cannot have conventional dental treatment for any reason.



These teeth were treated with SDF